



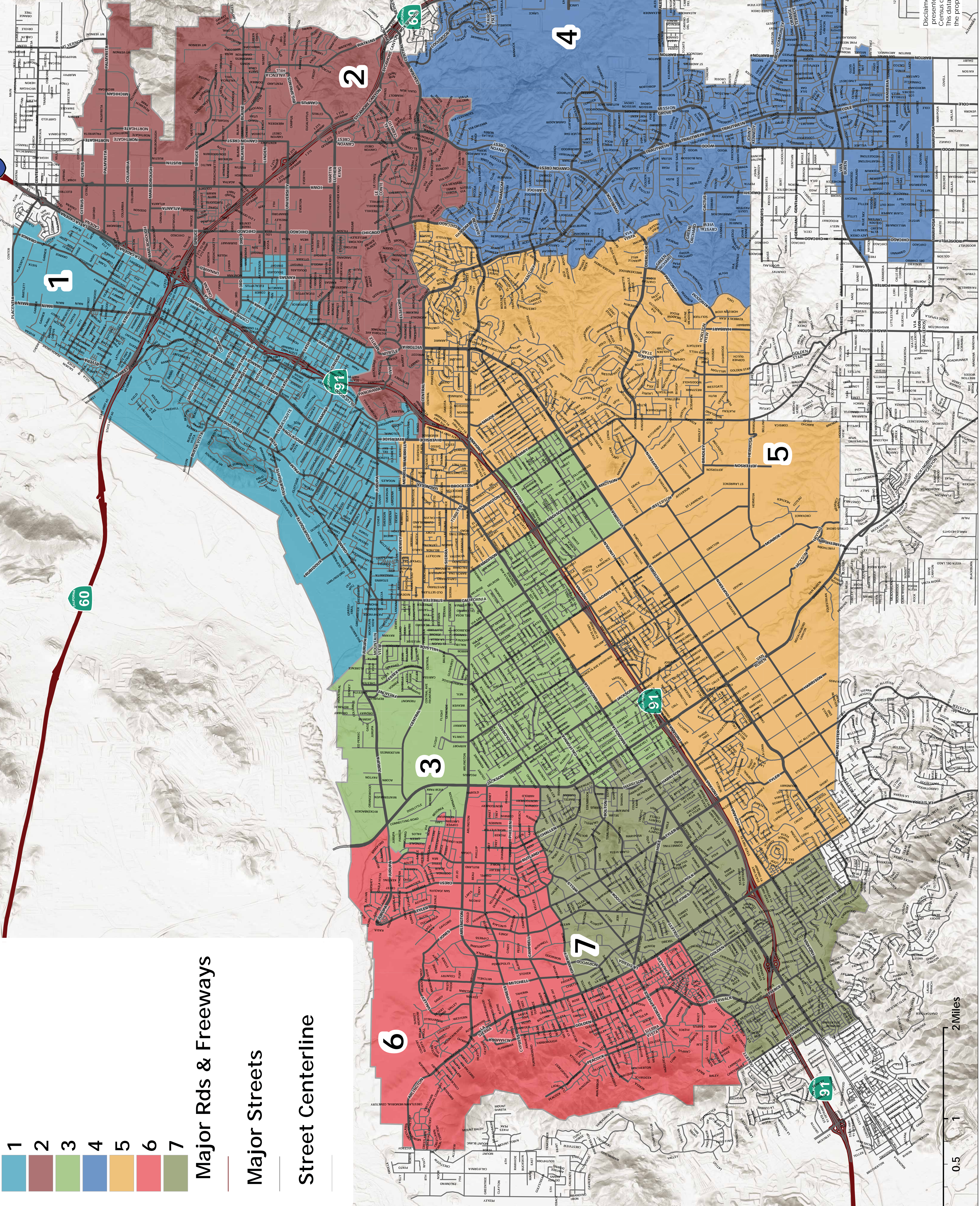
REDISTRICTING SCENARIO: Draft C v2

- 1
- 2
- 3
- 4
- 5
- 6
- 7

Major Rds & Freeways

Major Streets

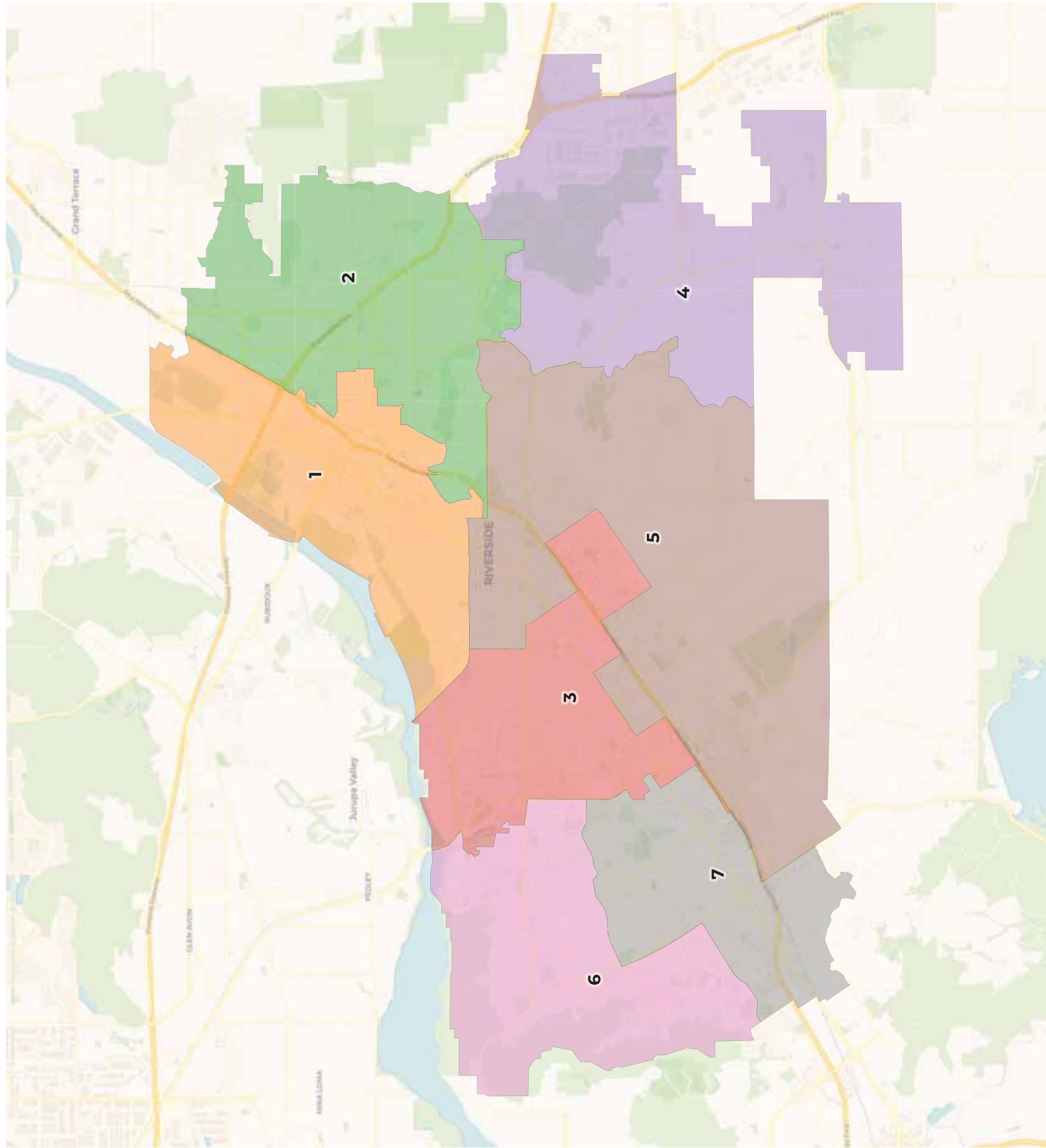
Street Centerline



Disclaimer: The redistricting proposals presented here are based on Census data released in November 2022. This data is considered preliminary and the proposed districts are subject to change.

City of Riverside

C2: Casa Blanca kept whole



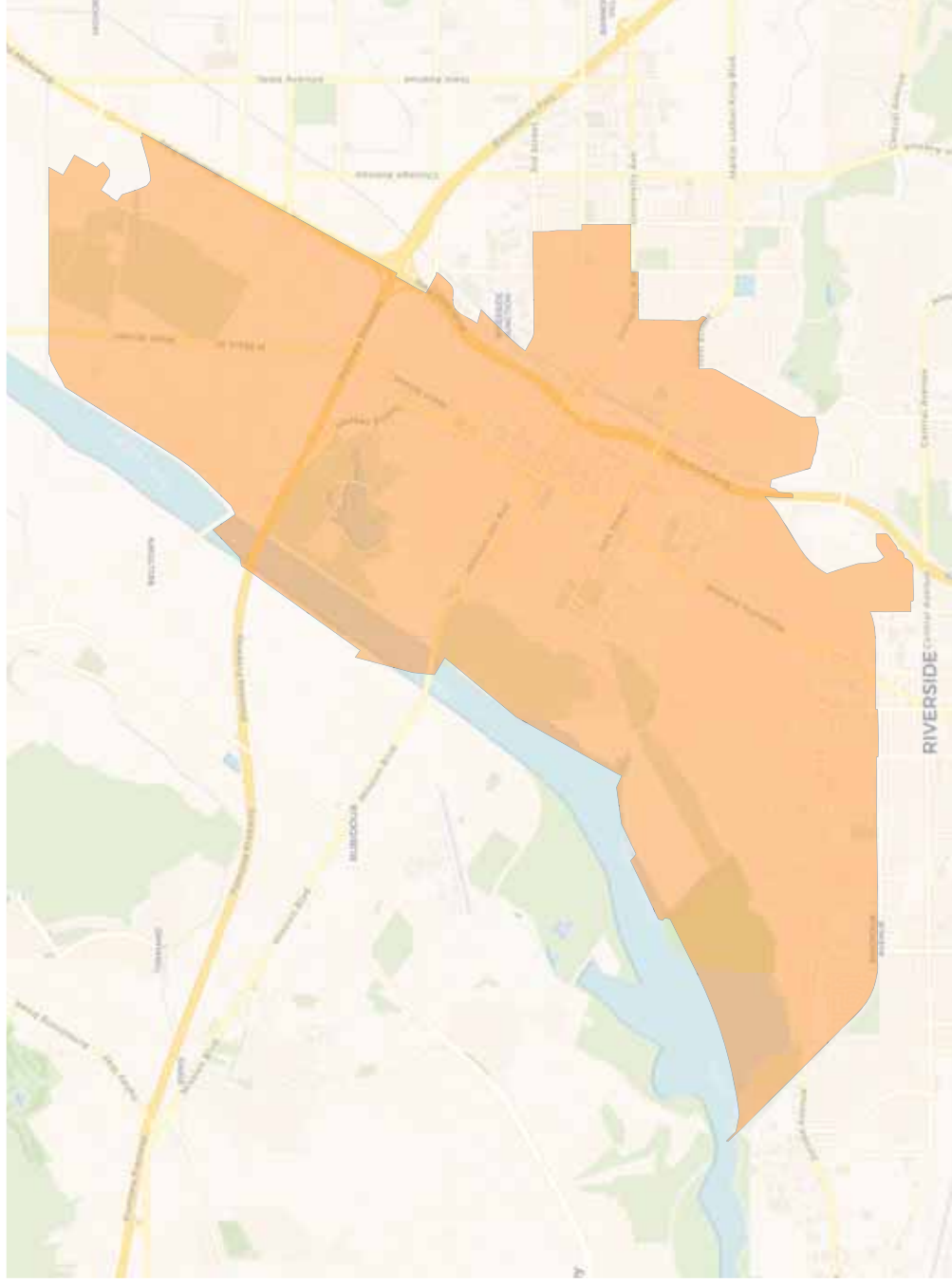
2020 Census

	1	2	3	4	5	6	7
Population	45,098	45,429	47,105	44,116	45,366	43,948	45,383
Deviation	-108	223	1,899	-1,090	160	-1,258	177
Deviation %	-0.2%	0.5%	4.2%	-2.4%	0.4%	-2.8%	0.4%
Other	14,554	15,613	11,233	20,979	20,288	8,734	10,288
Other %	32.3%	34.4%	23.8%	47.6%	44.7%	19.9%	22.7%
Latino	26,286	20,149	31,971	13,617	20,166	30,889	30,079
Latino %	58.3%	44.4%	67.9%	30.9%	44.5%	70.3%	66.3%
Asian	1,540	5,363	1,630	5,913	2,656	2,655	2,700
Asian %	3.4%	11.8%	3.5%	13.4%	5.9%	6.0%	5.9%
Black	2,718	4,304	2,271	3,607	2,256	1,670	2,316
Black %	6.0%	9.5%	4.8%	8.2%	5.0%	3.8%	5.1%

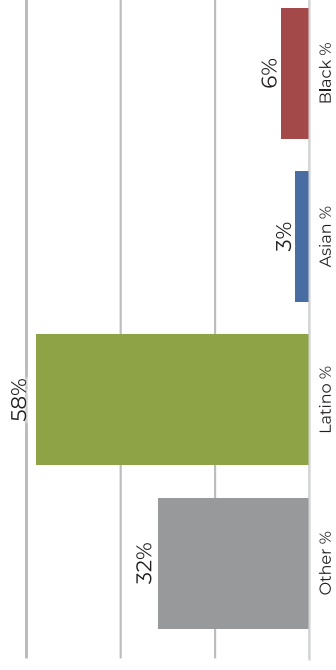
Citizen Voting Age Population (CVAP)

	1	2	3	4	5	6	7
Total CVAP	29,153	32,406	31,027	32,428	34,329	28,124	29,257
Other CVAP	11,302	12,169	11,374	17,228	16,990	8,267	8,631
Other CVAP %	38.8%	37.6%	36.7%	53.1%	49.5%	29.4%	29.5%
Latino CVAP	15,308	13,166	16,860	8,729	12,291	16,093	16,718
Latino CVAP %	52.5%	40.6%	54.3%	26.9%	35.8%	57.2%	57.1%
Asian CVAP	972	4,047	862	3,857	2,721	2,402	2,009
Asian CVAP %	3.3%	12.5%	2.8%	11.9%	7.9%	8.5%	6.9%
Black CVAP	1,571	3,024	1,931	2,614	2,327	1,362	1,899
Black CVAP %	5.4%	9.3%	6.2%	8.1%	6.8%	4.8%	6.5%

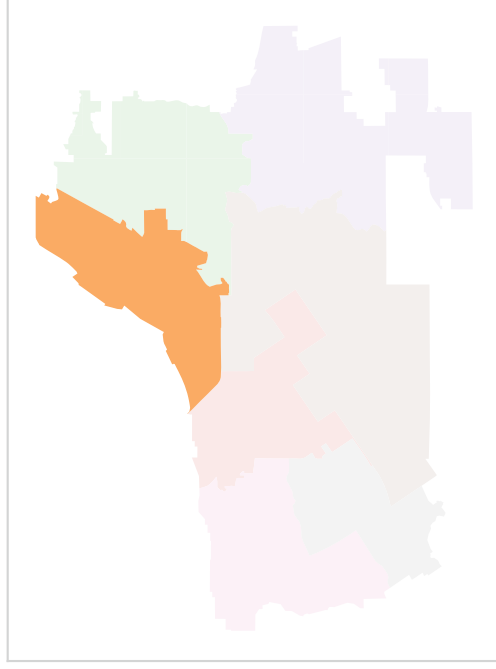
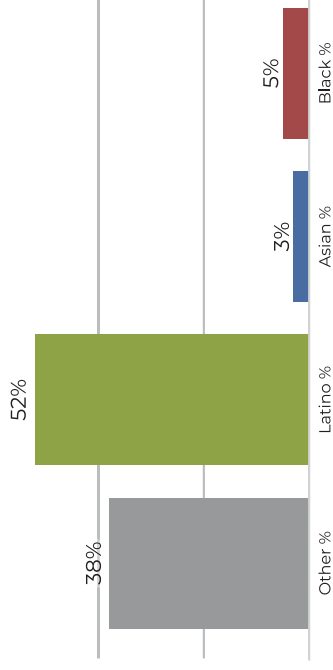
District 1



2020 Census

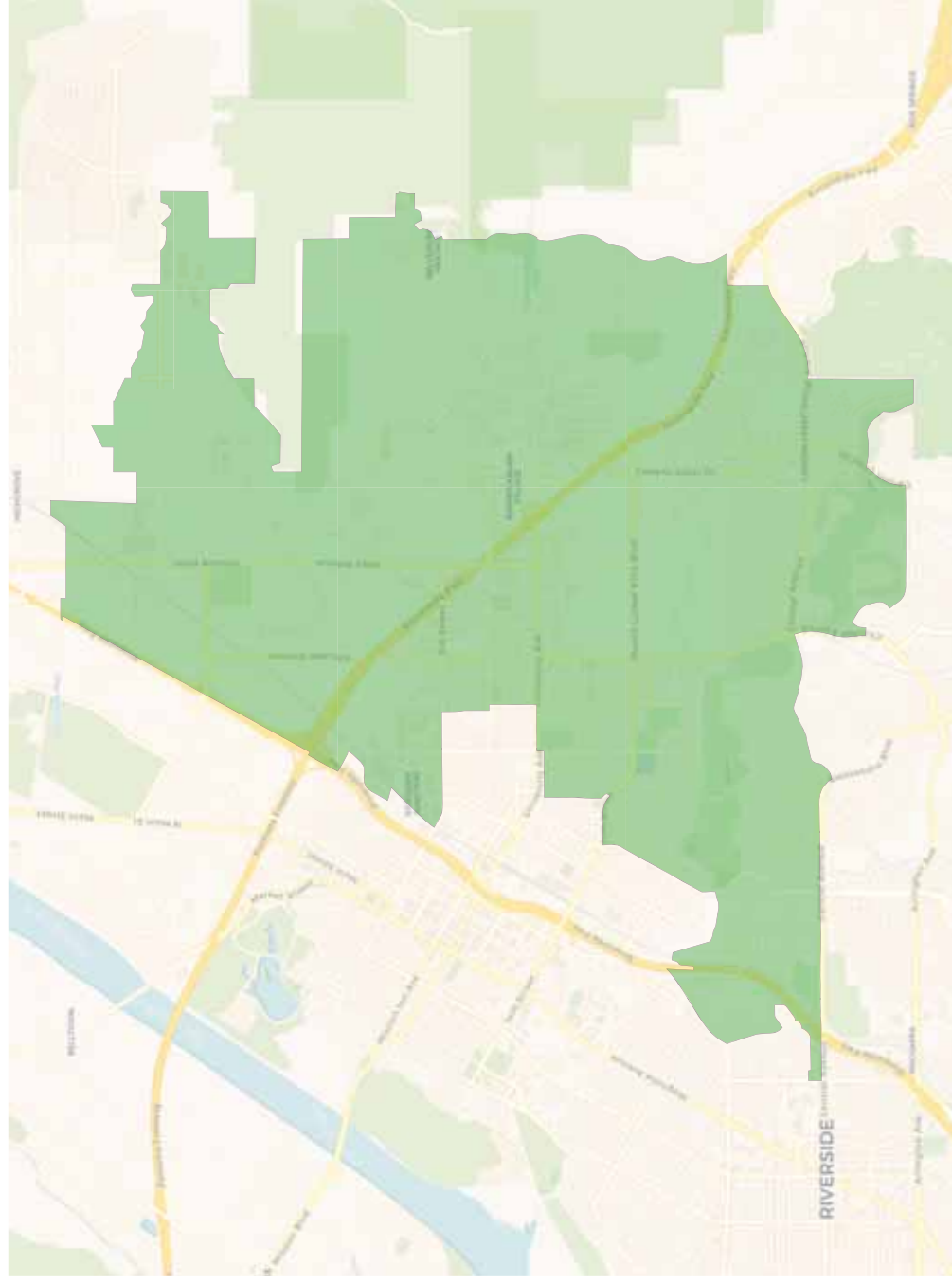


Citizen Voting Age Population

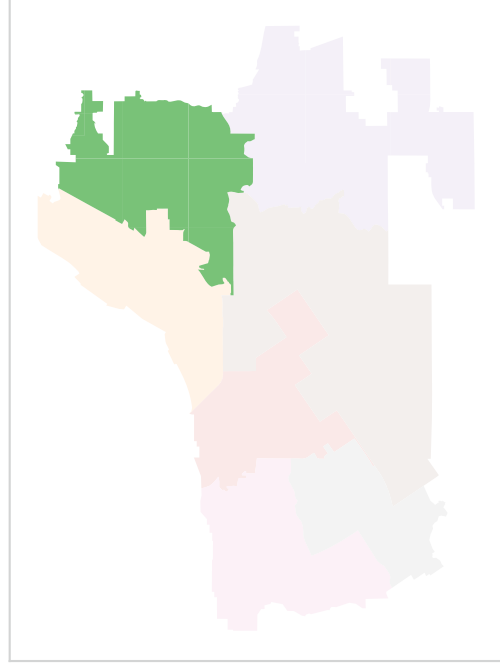
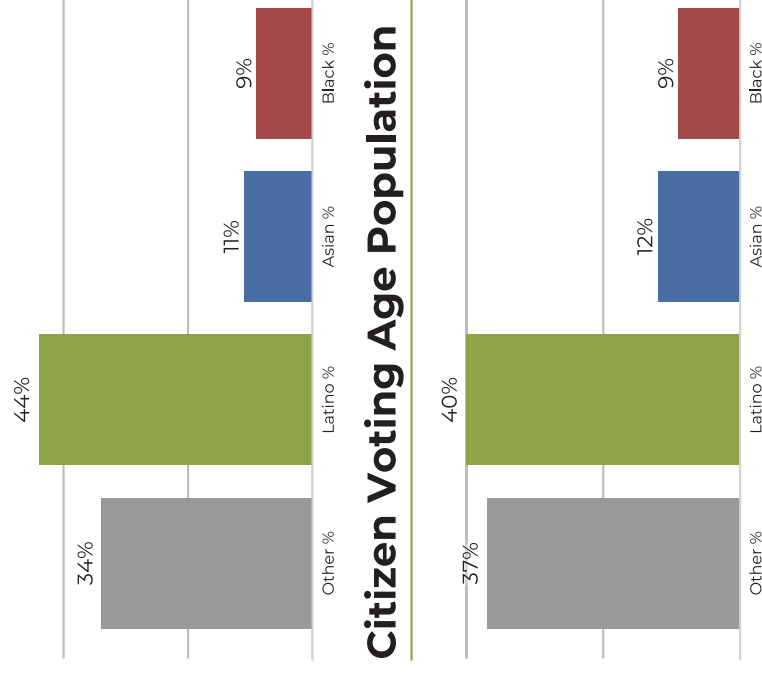


Population	Deviation	Deviation %	Other	Other %	Latino	Latino %	Asian	Asian %	Black	Black %
45,098	-108	-0.2%	14,554	32.3%	26,286	58.3%	1,540	3.4%	2,718	6.0%
Total CVAP	Other CVAP	Other CVAP %	Latino CVAP	Latino CVAP %	Asian CVAP	Asian CVAP %	Black CVAP	Black CVAP %		
29,153	11,302	38.8%	15,308	52.5%	972	3.3%	1,571	5.4%		

District 2

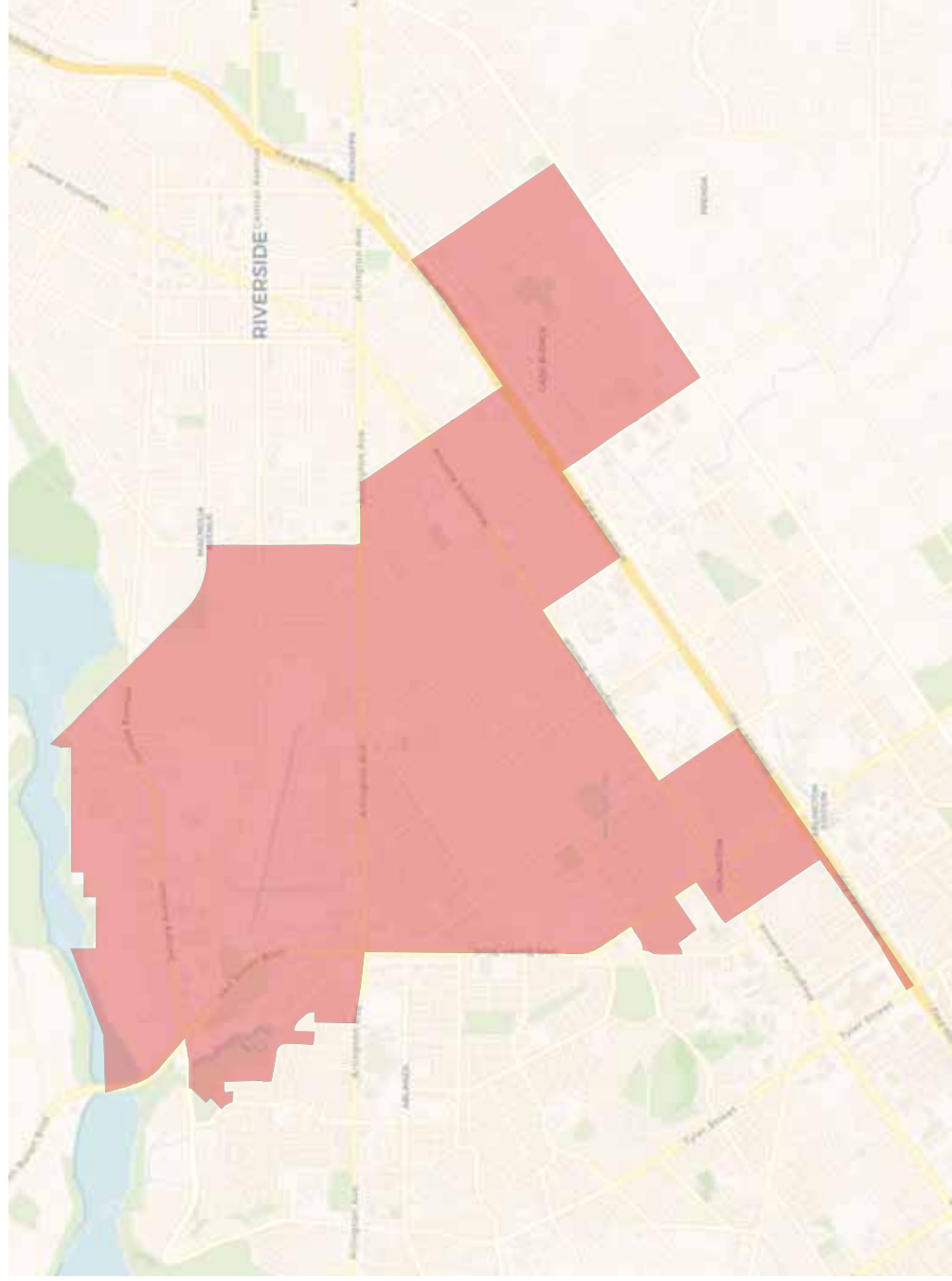


2020 Census

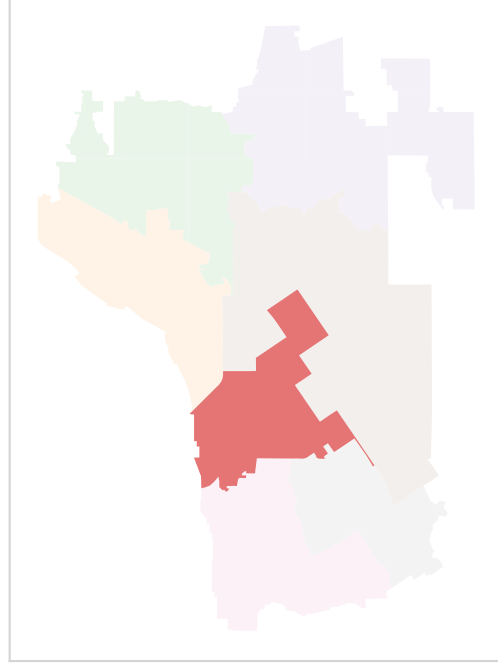
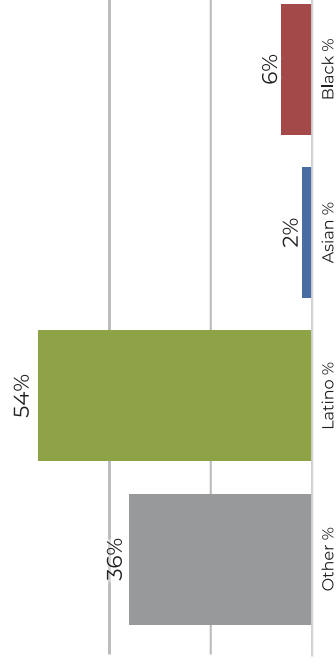
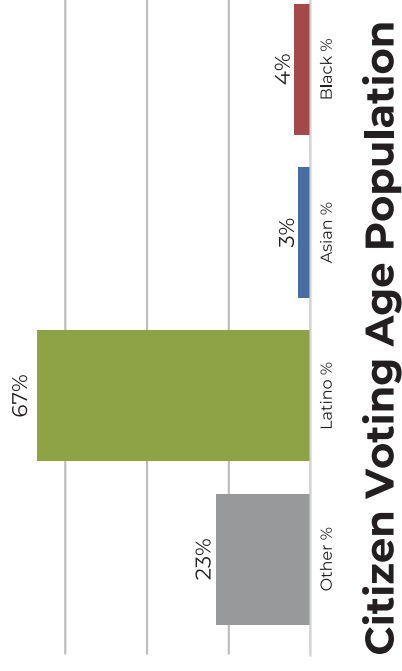


Population	Deviation	Deviation %	Other	Other %	Latino	Latino %	Latino CVAP	Latino CVAP %	Asian	Asian %	Asian CVAP	Asian CVAP %	Black	Black %	Black CVAP	Black CVAP %
45,429	223	0.5%	15,613	34.4%	20,149	44.4%	5,363	11.8%	4,304	9.5%						
Total CVAP	12,169	37.6%	13,166	40.6%	4,047	12.5%	3,024	9.3%								

District 3

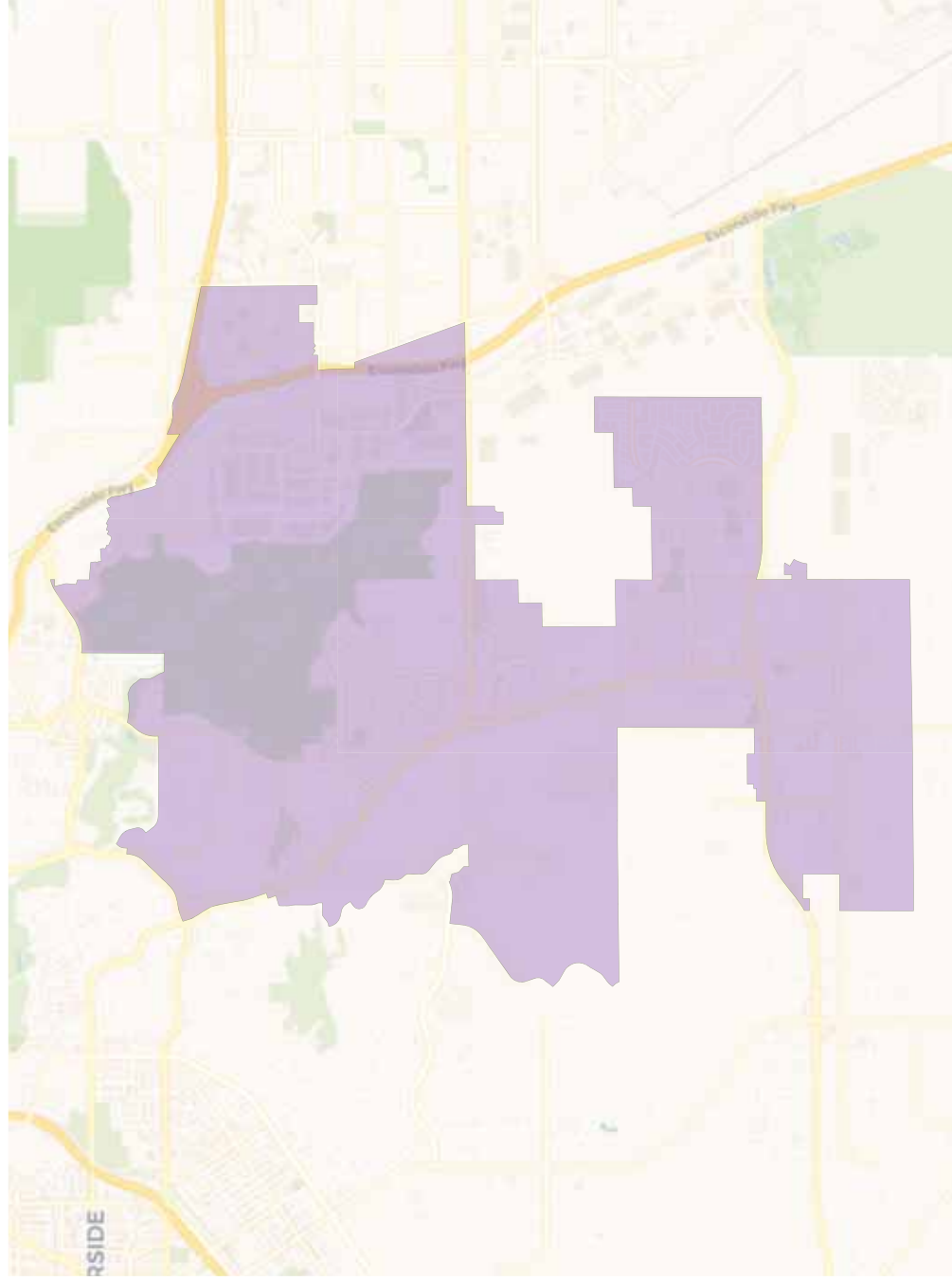


2020 Census

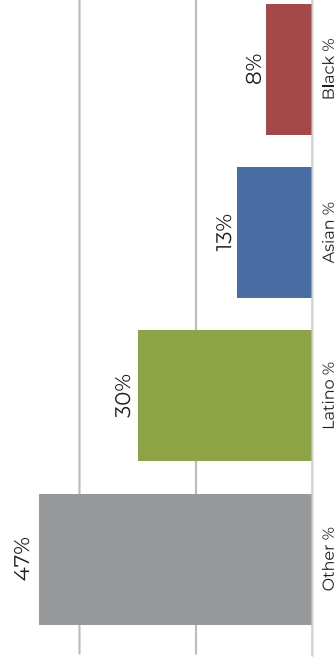


Population	Deviation	Deviation %	Other	Other %	Latino	Latino %	Asian	Asian %	Black	Black %
47,105	1,899	4.2%	11,233	23.8%	31,971	67.9%	1,630	3.5%	2,271	4.8%
Total CVAP	Other CVAP	Other CVAP %	Latino CVAP	Latino CVAP %	Asian CVAP	Asian CVAP %	Black CVAP	Black CVAP %		
31,027	11,374	36.7%	16,860	54.3%	862	2.8%	1,931	6.2%		

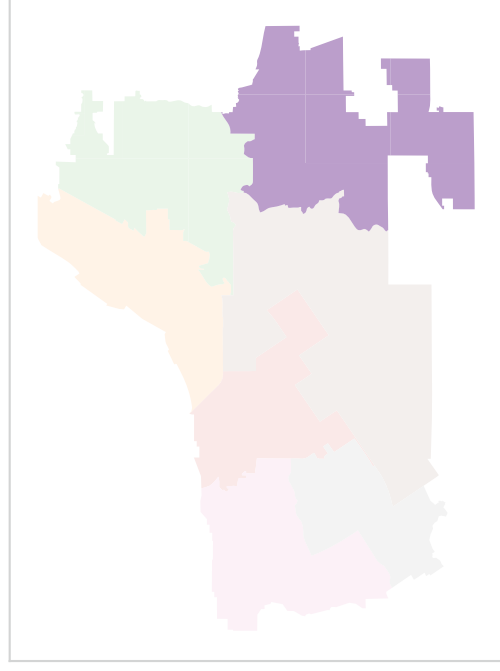
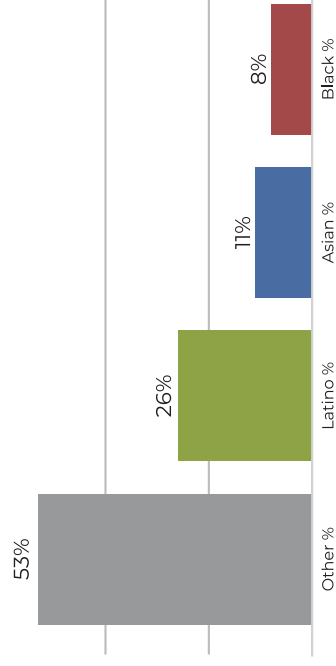
District 4



2020 Census

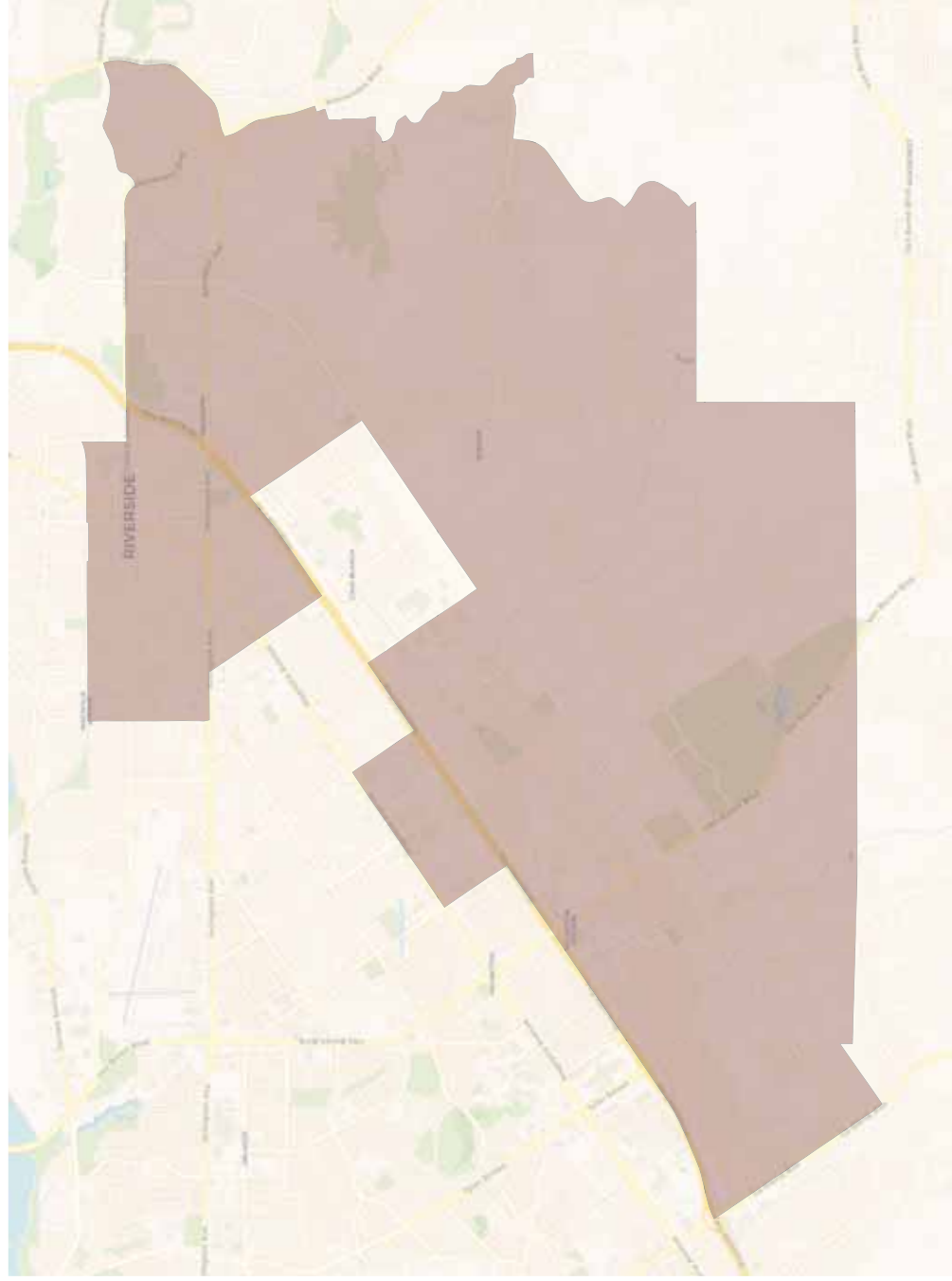


Citizen Voting Age Population

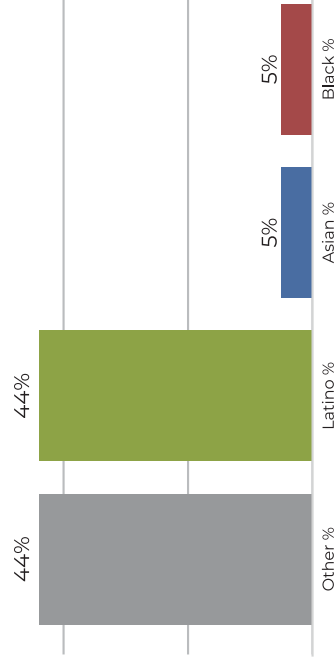


Population	Deviation	Deviation %	Other	Other %	Latino	Latino %	Asian	Asian %	Black	Black %
44,116	-1,090	-2.4%	20,979	47.6%	13,617	30.9%	5,913	13.4%	3,607	8.2%
Total CVAP	Other CVAP	Other CVAP %	Latino CVAP	Latino CVAP %	Asian CVAP	Asian CVAP %	Black CVAP	Black CVAP %		
32,428	17,228	53.1%	8,729	26.9%	3,857	11.9%	2,614	8.1%		

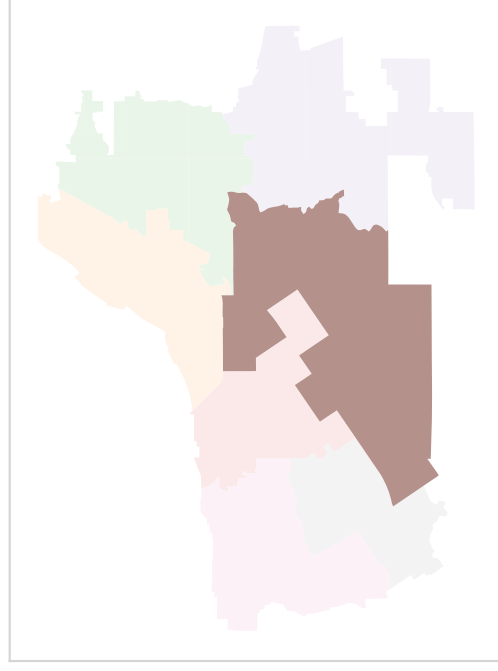
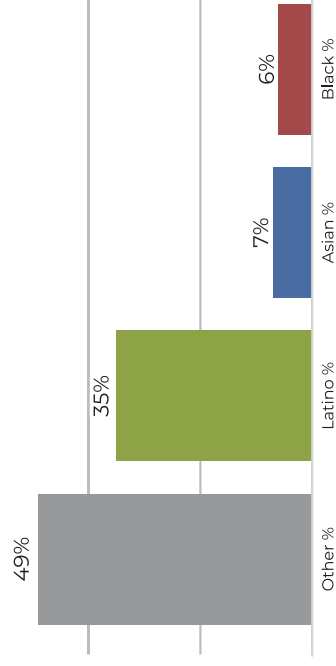
District 5



2020 Census

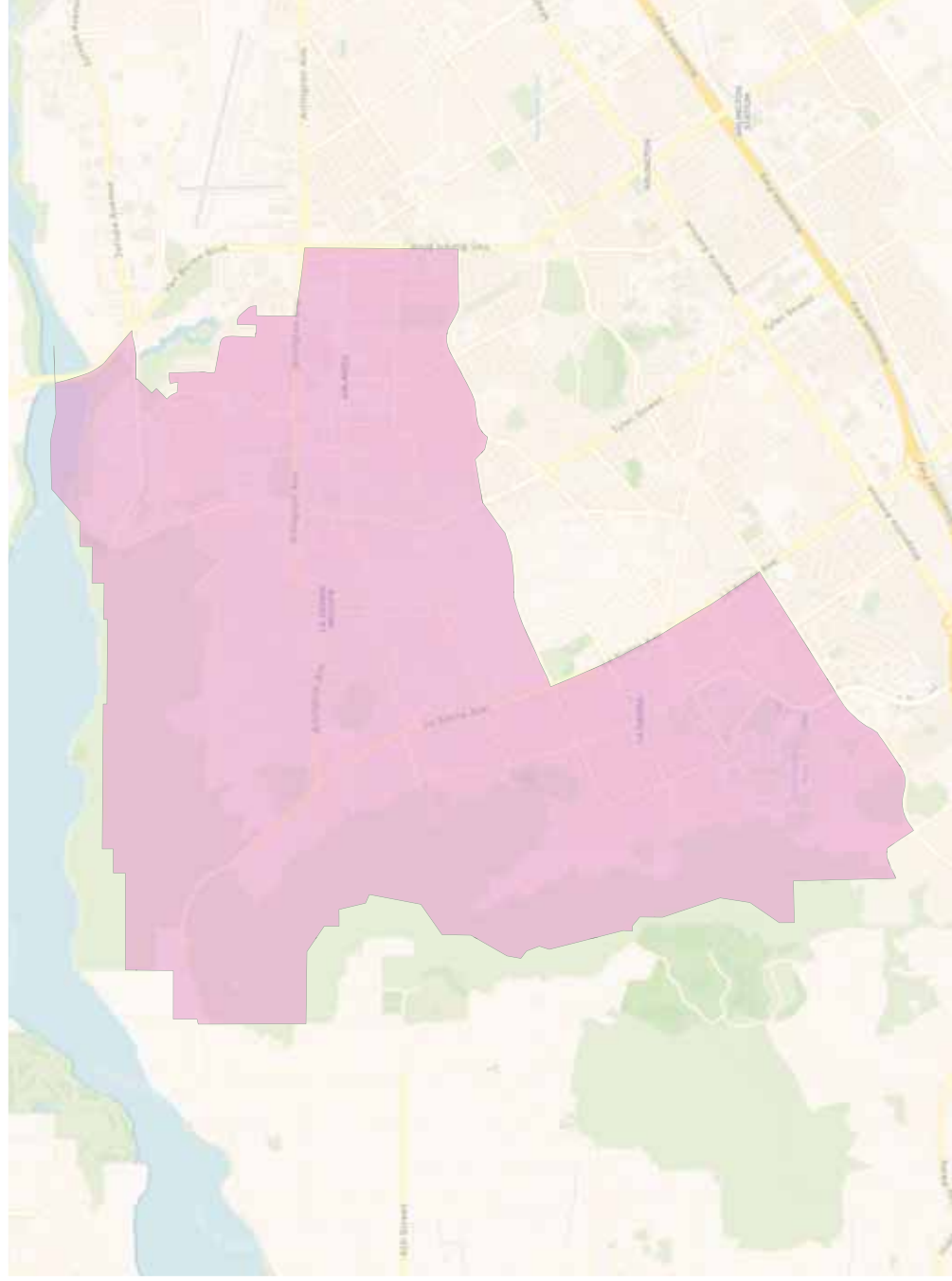


Citizen Voting Age Population

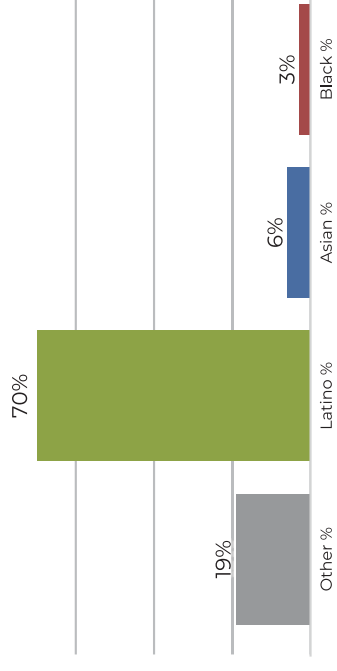


Population	Deviation	Deviation %	Other	Other %	Latino	Latino %	Asian	Asian %	Black	Black %
45,366	160	0.4%	20,288	44.7%	20,166	44.5%	2,656	5.9%	2,256	5.0%
Total CVAP	Other CVAP	Other CVAP %	Latino CVAP	Latino CVAP %	Asian CVAP	Asian CVAP %	Black CVAP	Black CVAP %		
34,329	16,990	49.5%	12,291	35.8%	2,721	7.9%	2,327	6.8%		

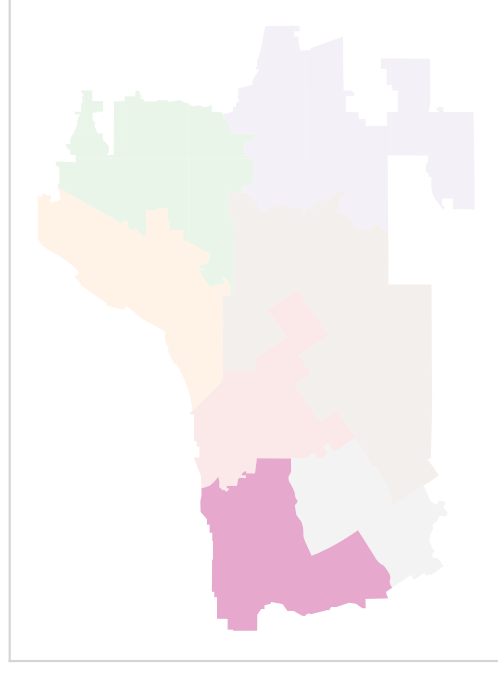
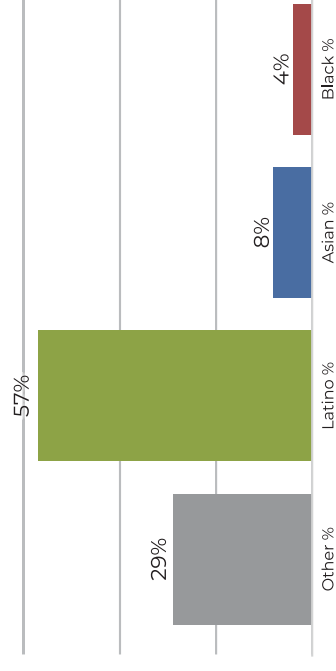
District 6



2020 Census

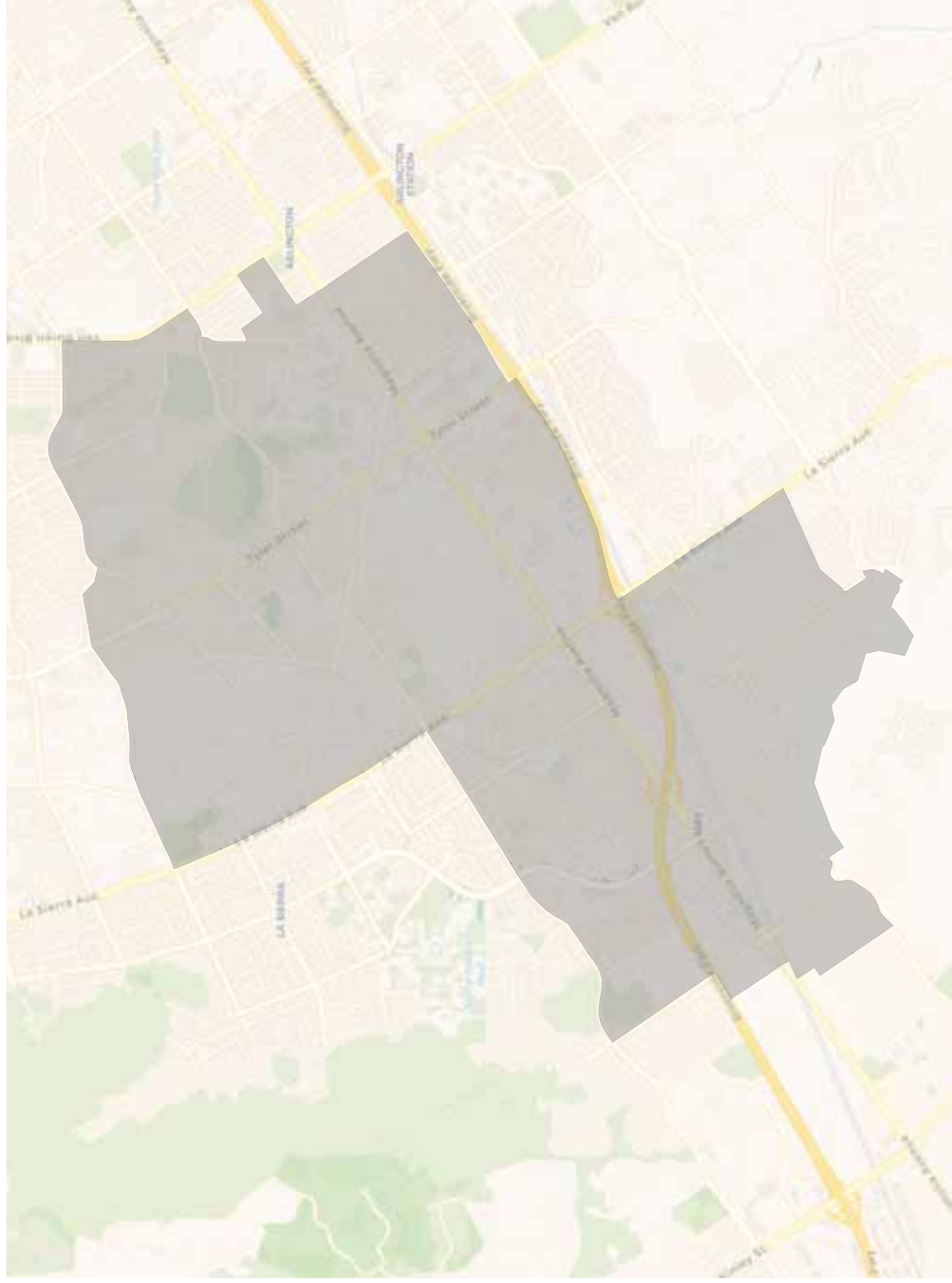


Citizen Voting Age Population

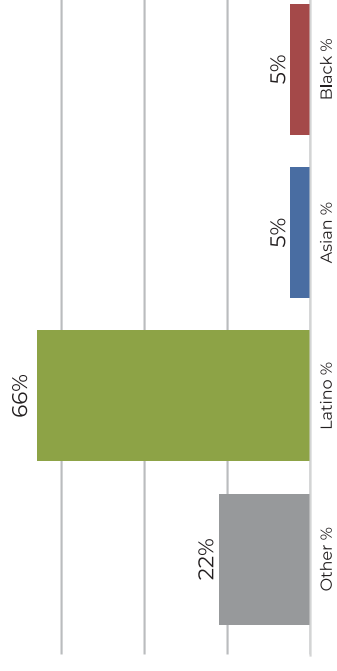


Population	Deviation	Deviation %	Other	Other %	Latino	Latino %	Asian	Asian %	Black	Black %
43,948	-1,258	-2.8%	8,734	19.9%	30,889	70.3%	2,655	6.0%	1,670	3.8%
Total CVAP	Other CVAP	Other CVAP %	Latino CVAP	Latino CVAP %	Asian CVAP	Asian CVAP %	Black CVAP	Black CVAP %		
28,124	8,267	29.4%	16,093	57.2%	2,402	8.5%	1,362	4.8%		

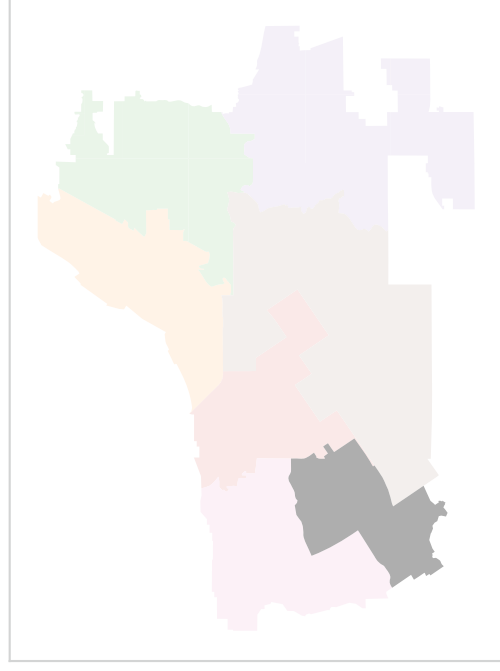
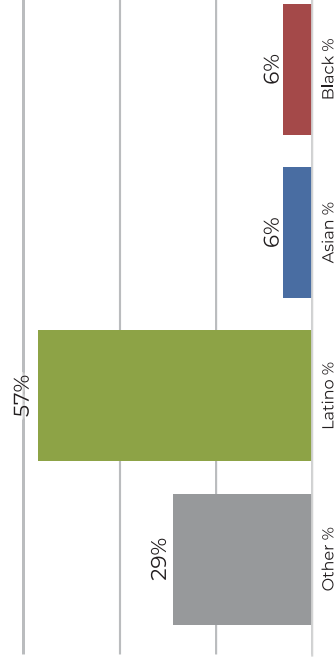
District 7



2020 Census



Citizen Voting Age Population



Population	Deviation	Deviation %	Other	Other %	Latino	Latino %	Asian	Asian %	Black	Black %
45,383	177	0.4%	10,288	22.7%	30,079	66.3%	2,700	5.9%	2,316	5.1%
Total CVAP	8,631	29.5%	16,718	57.1%	2,009	6.9%	1,899	6.5%		

Other CVAP	Latino CVAP	Asian CVAP	Black CVAP
8,631	2,009	1,899	1,899