



REDISTRICTING SCENARIO:

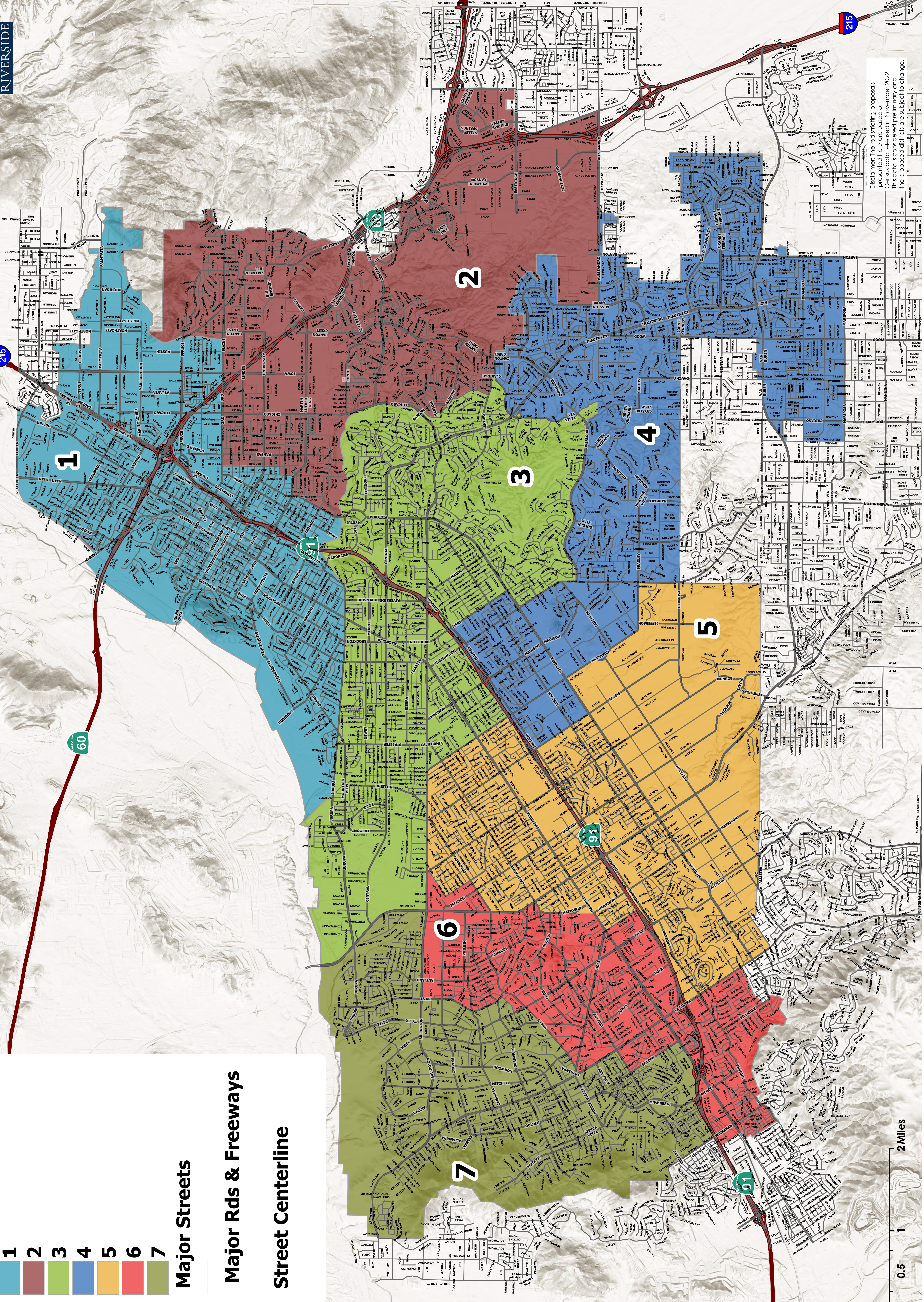
Draft B Min Change

- 1
- 2
- 3
- 4
- 5
- 6
- 7

Major Streets

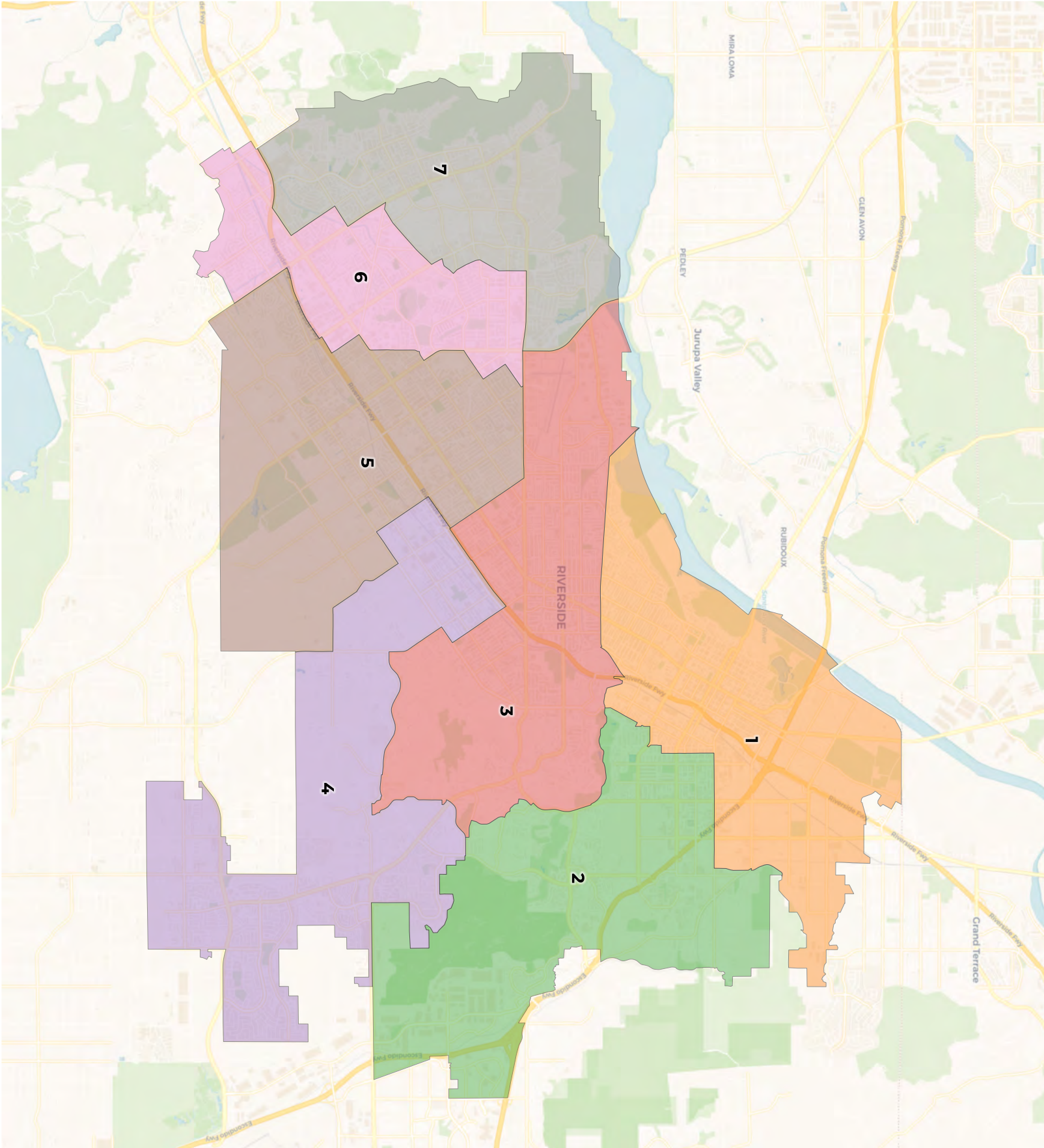
Major Rds & Freeways

Street Centerline



Disclaimer: The redistricting proposals presented here are based on Census data released in November 2022. This data is considered preliminary and the proposed districts are subject to change.





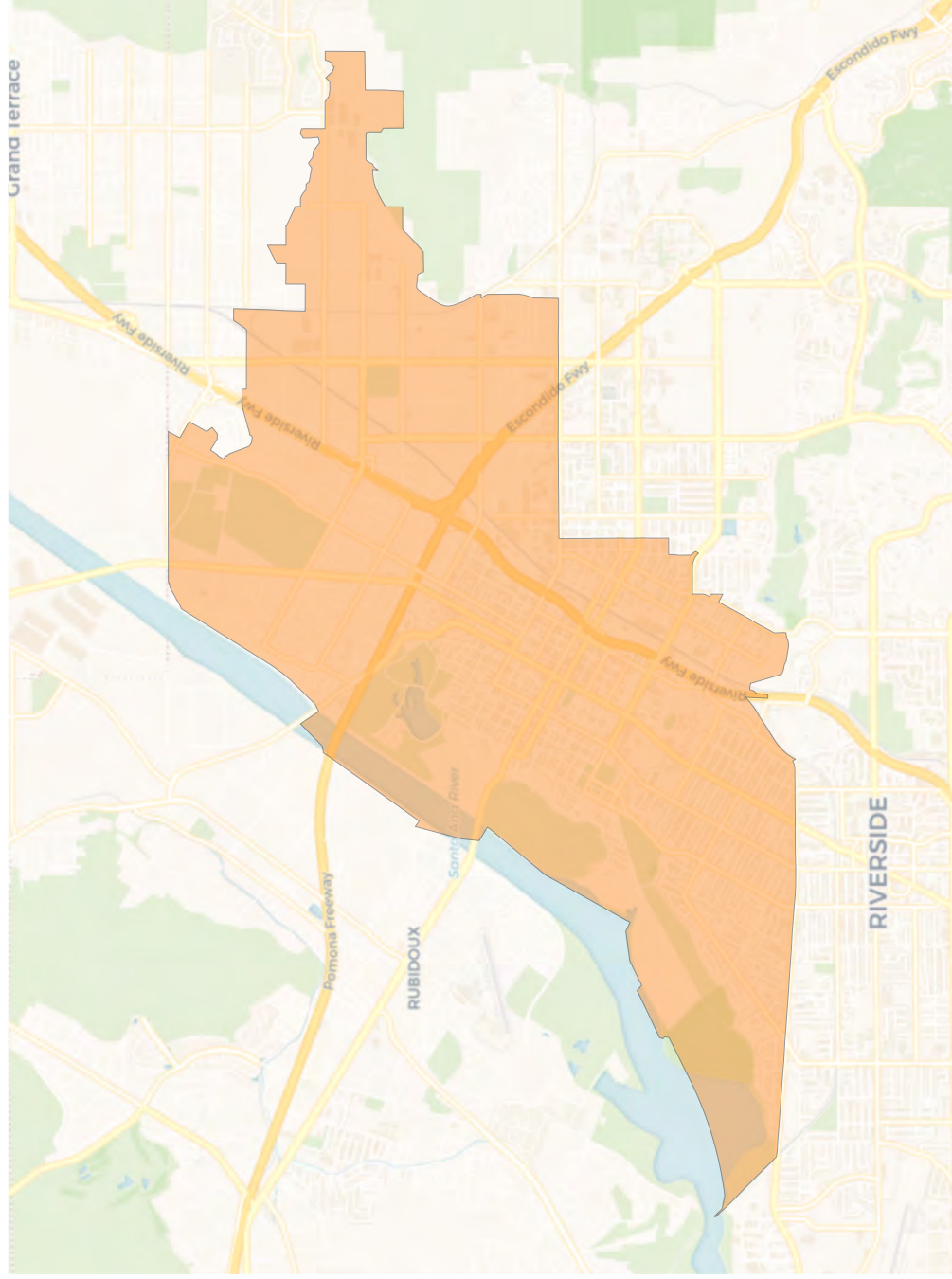
2020 Census

	1	2	3	4	5	6	7
Population	45,525	44,012	45,452	44,712	45,779	45,652	45,313
Deviation	319	-1,194	246	-494	573	446	107
Deviation %	0.7%	-2.6%	0.5%	-1.1%	1.3%	1.0%	0.2%
Other	14,312	15,383	19,100	19,443	14,116	8,988	10,347
Other %	31.4%	35.0%	42.0%	43.5%	30.8%	19.7%	22.8%
Latino	26,218	18,778	22,541	16,728	27,060	32,220	29,612
Latino %	57.6%	42.7%	49.6%	37.4%	59.1%	70.6%	65.3%
Asian	1,940	5,666	1,638	5,217	2,518	2,254	3,224
Asian %	4.3%	12.9%	3.6%	11.7%	5.5%	4.9%	7.1%
Black	3,055	4,185	2,173	3,324	2,085	2,190	2,130
Black %	6.7%	9.5%	4.8%	7.4%	4.6%	4.8%	4.7%

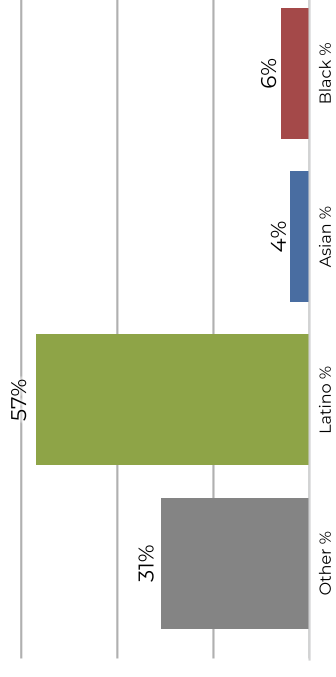
Citizen Voting Age Population (CVAP)

	1	2	3	4	5	6	7
Total CVAP	29,059	31,715	32,309	32,300	33,192	27,335	30,814
Other CVAP	11,341	11,903	16,148	15,812	13,800	7,369	9,588
Other CVAP %	39.0%	37.5%	50.0%	49.0%	41.6%	27.0%	31.1%
Latino CVAP	14,708	12,600	12,714	10,280	15,423	16,637	16,803
Latino CVAP %	50.6%	39.7%	39.4%	31.8%	46.5%	60.9%	54.5%
Asian CVAP	1,354	4,312	1,473	3,518	1,821	1,570	2,822
Asian CVAP %	4.7%	13.6%	4.6%	10.9%	5.5%	5.7%	9.2%
Black CVAP	1,656	2,900	1,974	2,690	2,148	1,759	1,601
Black CVAP %	5.7%	9.1%	6.1%	8.3%	6.5%	6.4%	5.2%

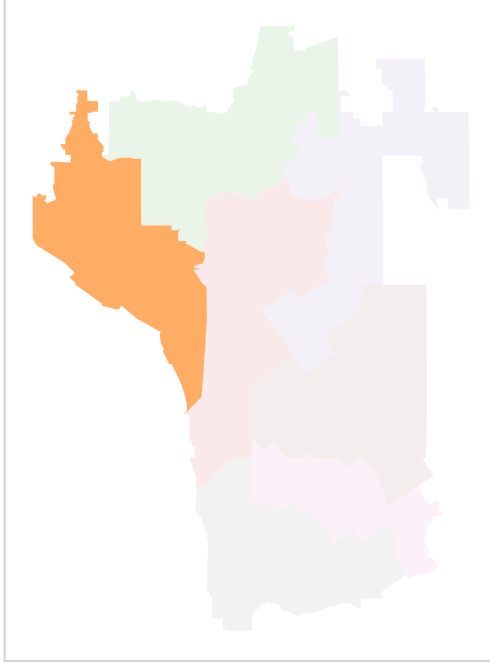
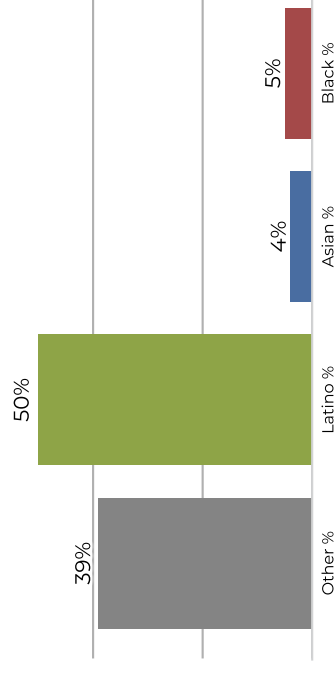
Ward 1



2020 Census

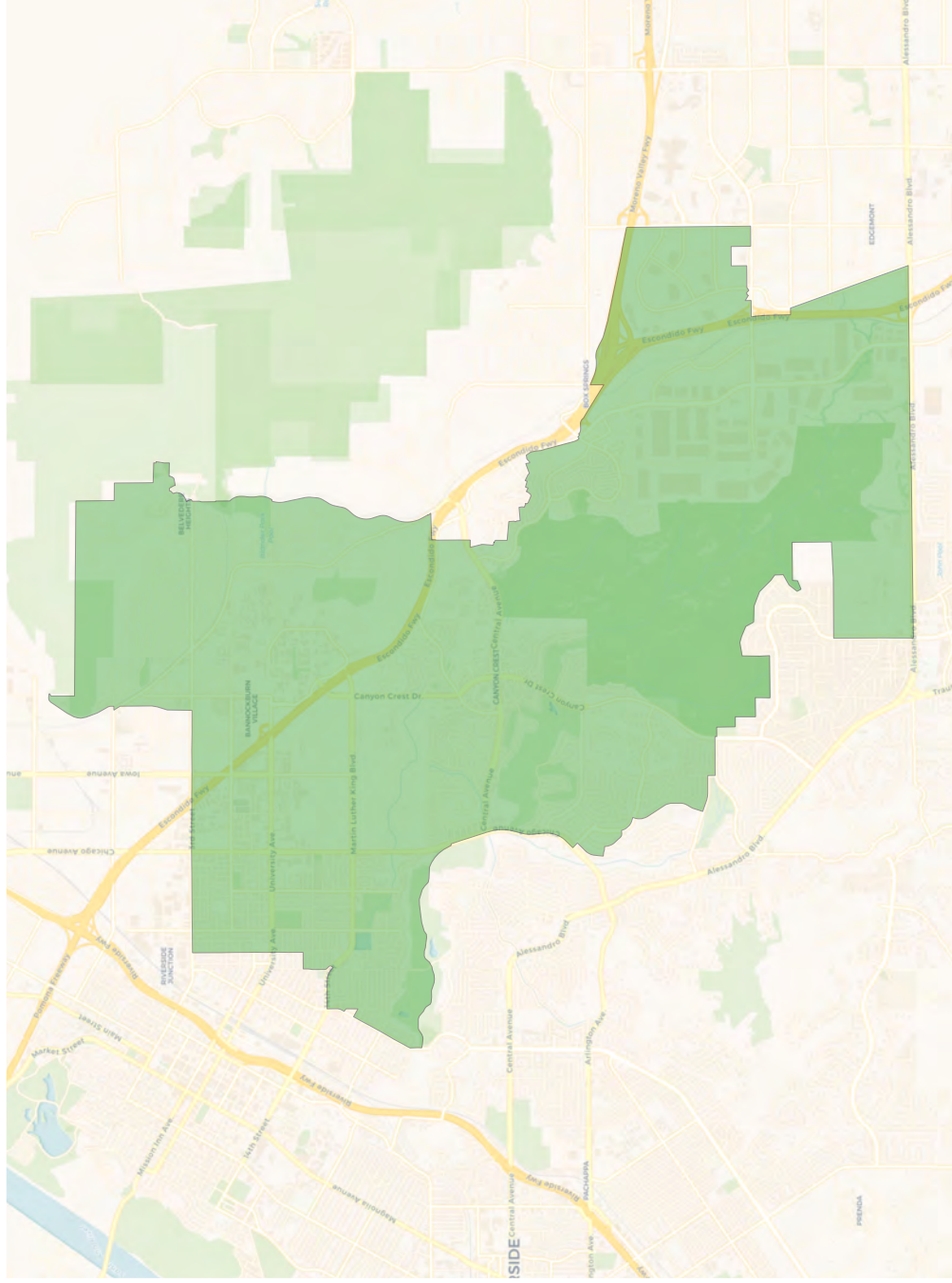


Citizen Voting Age Population

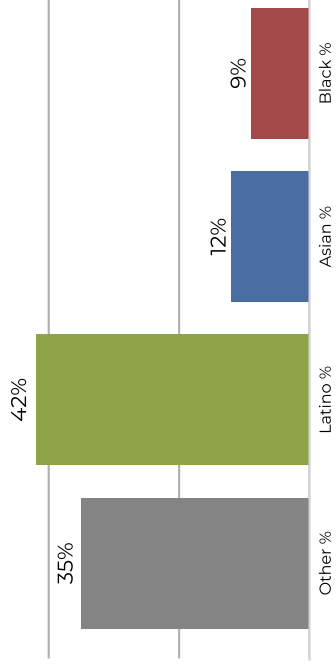


Population	Deviation	Deviation %	Other	Other %	Latino	Latino %	Asian	Asian %	Black	Black %
45,525	319	0.7%	14,312	31.4%	26,218	57.6%	1,940	4.3%	3,055	6.7%
Total CVAP	Other CVAP	Other CVAP %	Latino CVAP	Latino CVAP %	Asian CVAP	Asian CVAP %	Black CVAP	Black CVAP %		
29,059	11,341	39.0%	14,708	50.6%	1,354	4.7%	1,656	5.7%		

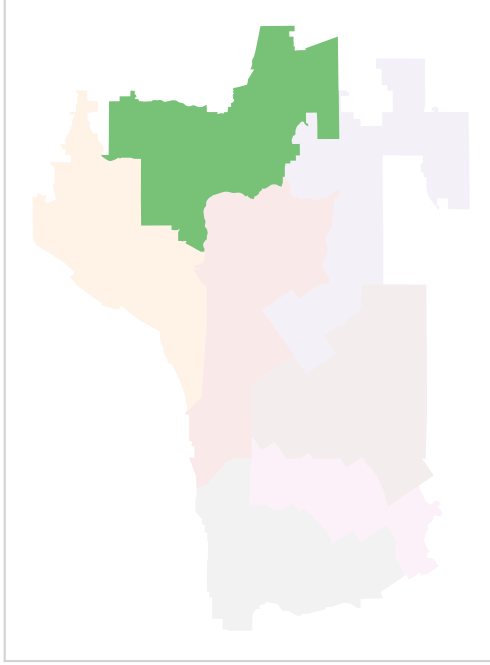
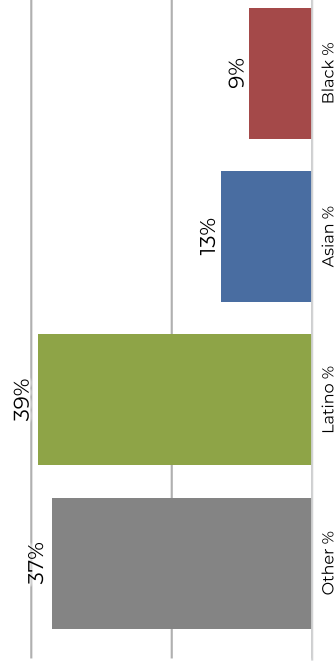
Ward 2



2020 Census

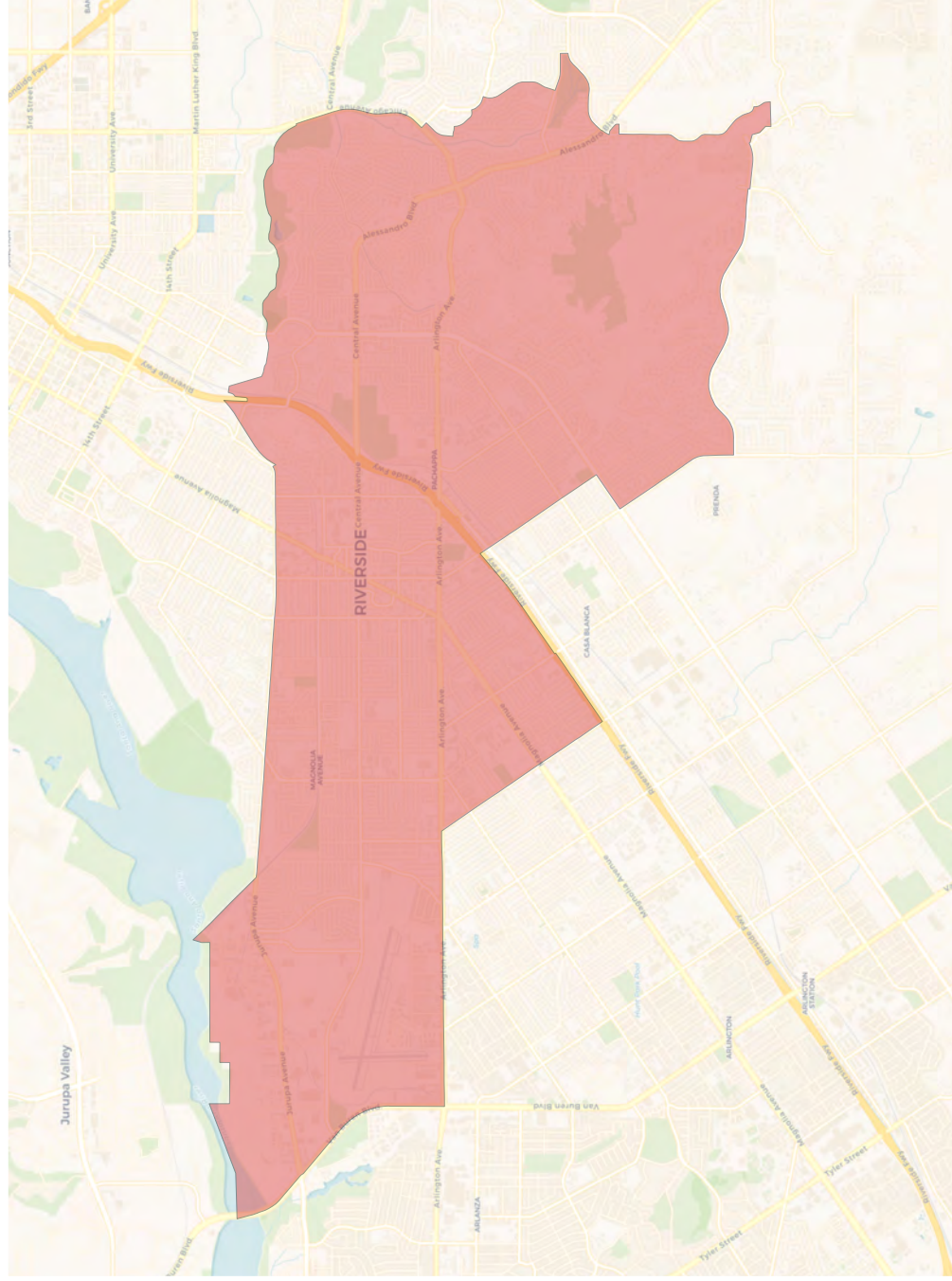


Citizen Voting Age Population

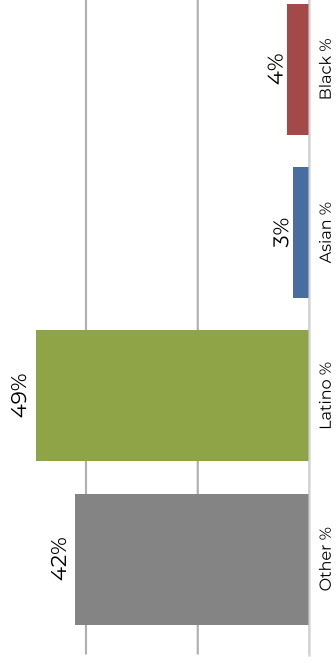


Population	Deviation	Deviation %	Other	Other %	Latino	Latino %	Asian	Asian %	Black	Black %
44,012	-1,194	-2.6%	15,383	35.0%	18,778	42.7%	5,666	12.9%	4,185	9.5%
Total CVAP	Other CVAP	Other CVAP %	Latino CVAP	Latino CVAP %	Asian CVAP	Asian CVAP %	Black CVAP	Black CVAP %	Latino CVAP	Black CVAP %
31,715	11,903	37.5%	12,600	39.7%	4,312	13.6%	2,900	9.1%		

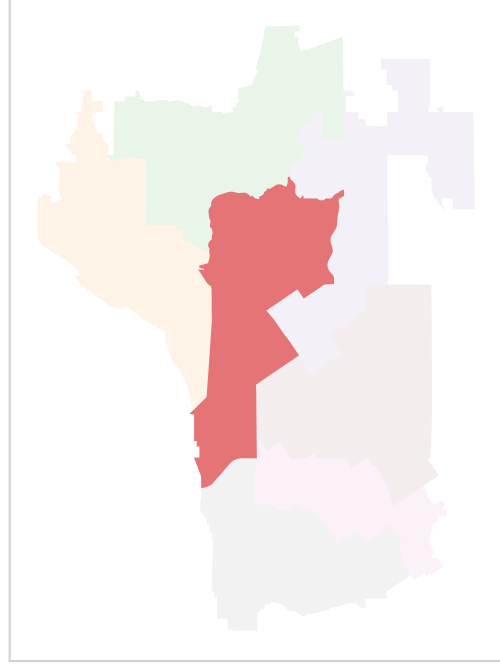
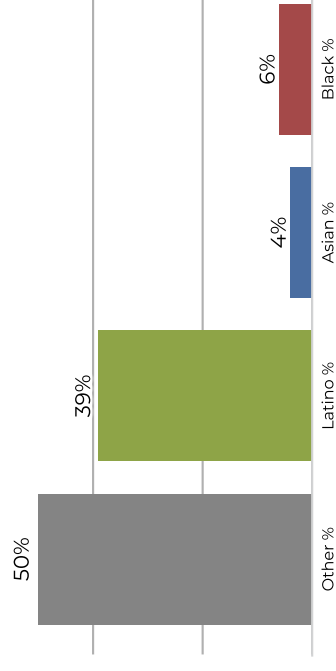
Ward 3



2020 Census

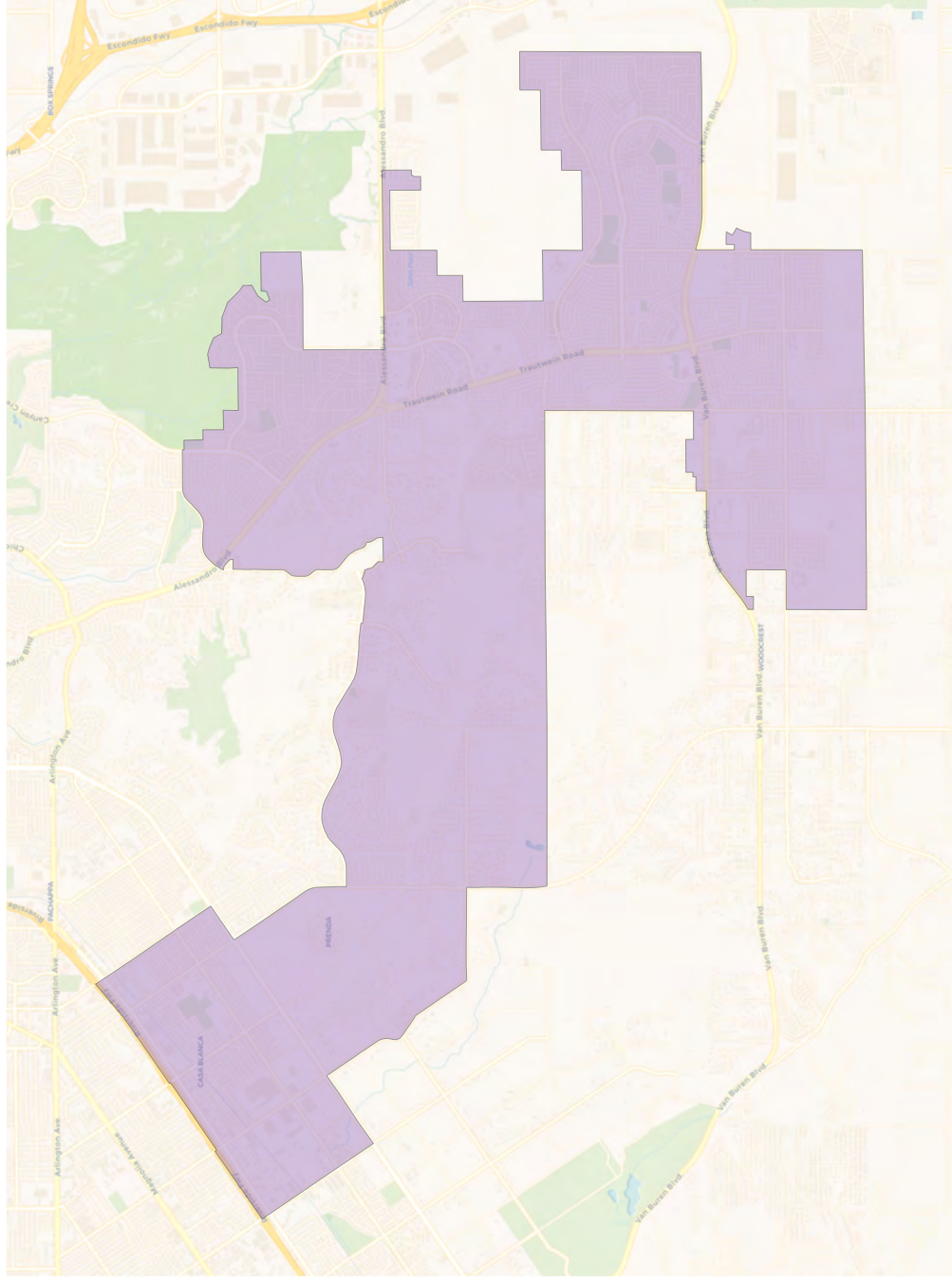


Citizen Voting Age Population

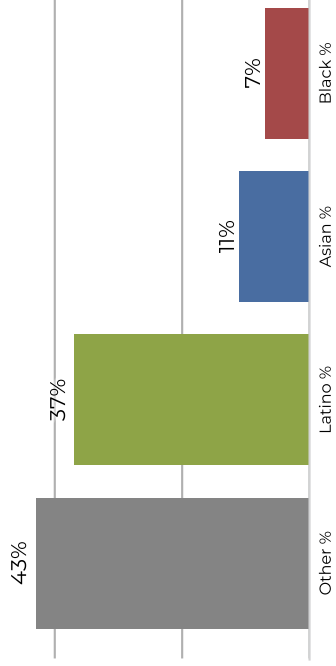


Population	Deviation	Deviation %	Other	Other %	Latino	Latino %	Asian	Asian %	Black	Black %
45,452	246	0.5%	19,100	42.0%	22,541	49.6%	1,638	3.6%	2,173	4.8%
Total CVAP	Other CVAP	Other CVAP %	Latino CVAP	Latino CVAP %	Asian CVAP	Asian CVAP %	Black CVAP	Black CVAP %		
32,309	16,148	50.0%	12,714	39.4%	1,473	4.6%	1,974	6.1%		

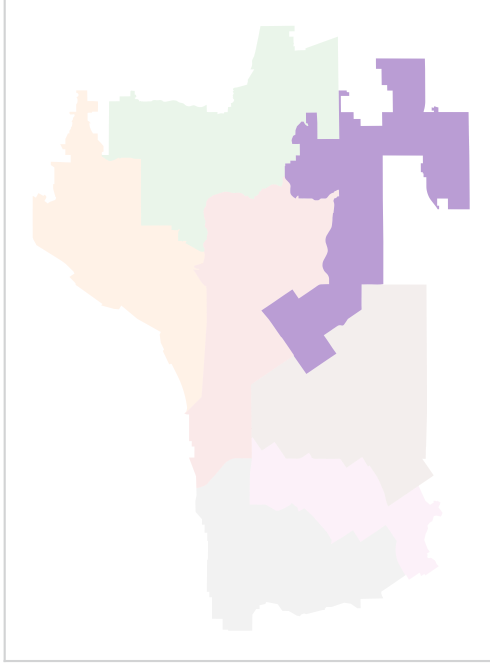
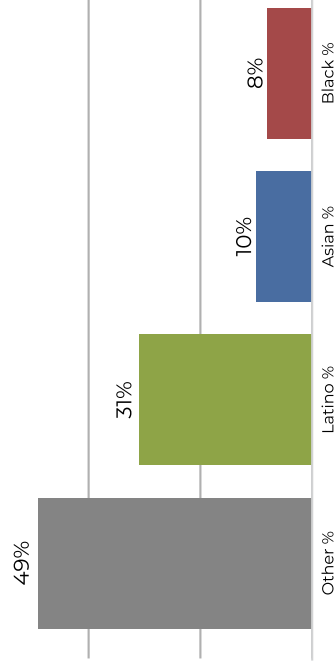
Ward 4



2020 Census

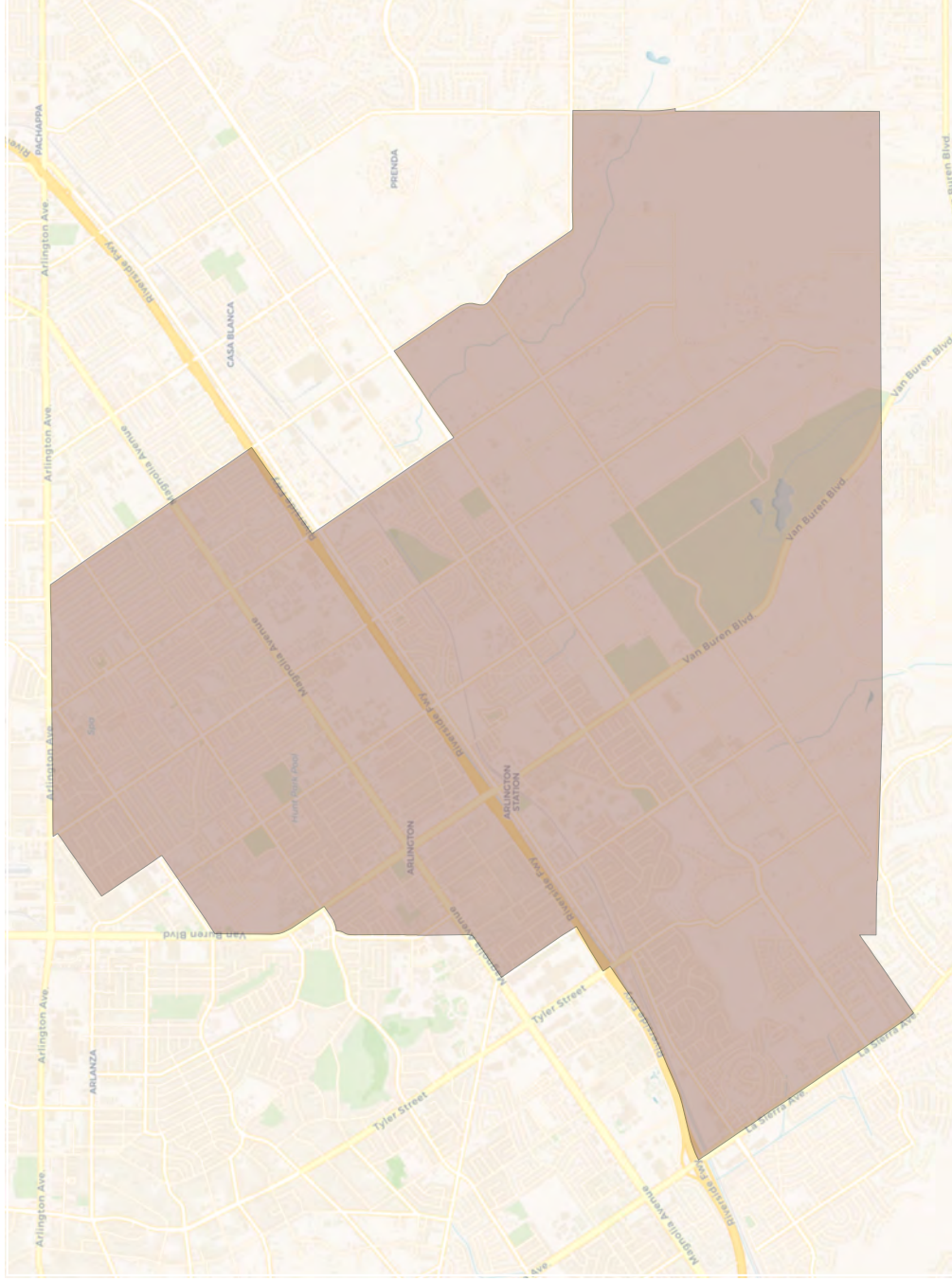


Citizen Voting Age Population

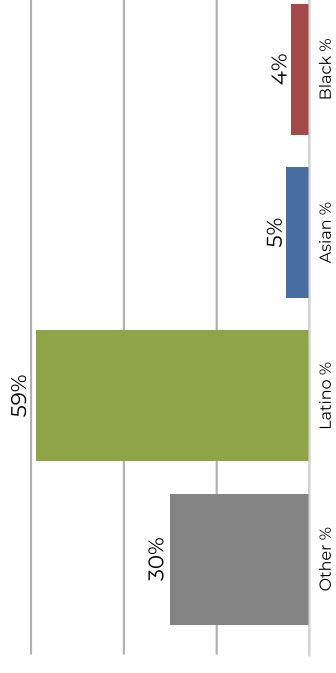


Population	Deviation	Deviation %	Other	Other %	Latino	Latino %	Asian	Asian %	Black	Black %
44,712	-494	-1.1%	19,443	43.5%	16,728	37.4%	5,217	11.7%	3,324	7.4%
Total CVAP	Other CVAP	Other CVAP %	Latino CVAP	Latino CVAP %	Asian CVAP	Asian CVAP %	Black CVAP	Black CVAP %		
32,300	15,812	49.0%	10,280	31.8%	3,518	10.9%	2,690	8.3%		

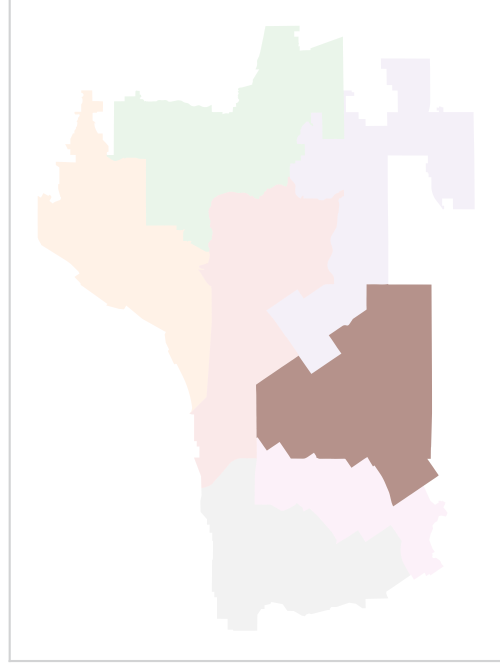
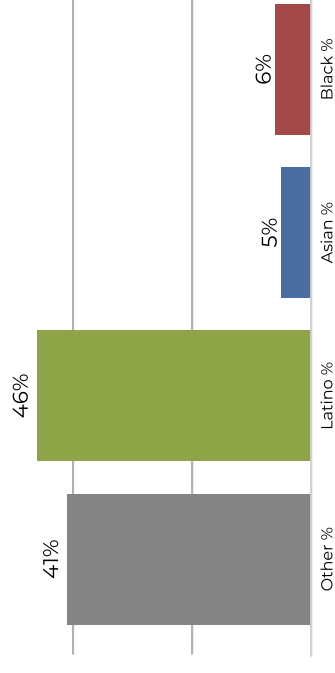
Ward 5



2020 Census

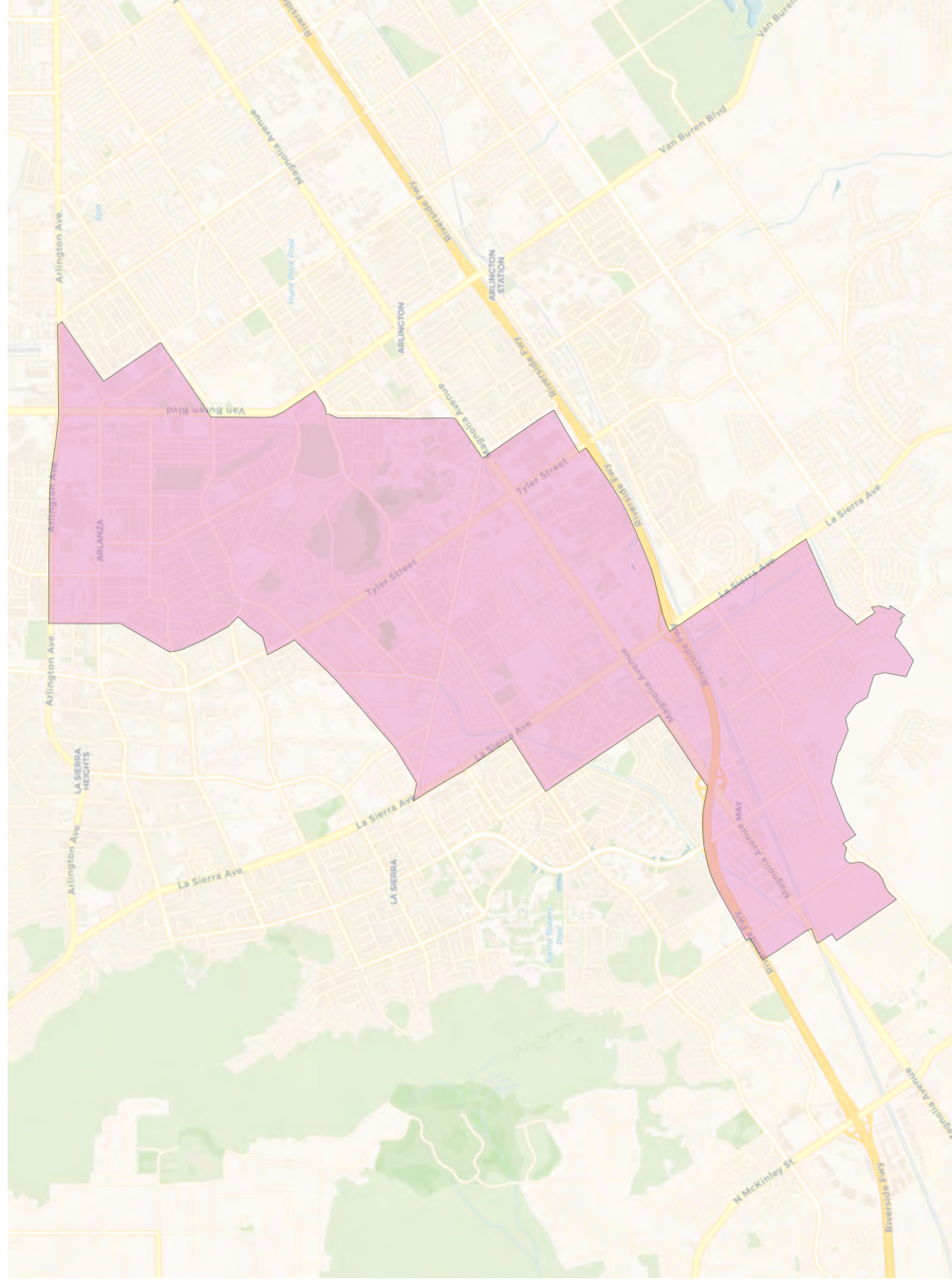


Citizen Voting Age Population



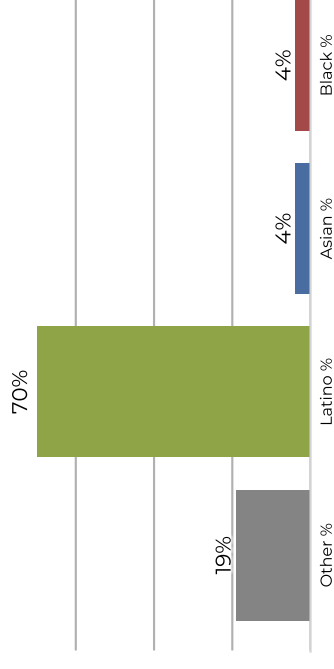
Population	Deviation	Deviation %	Other	Other %	Latino	Latino %	Asian	Asian %	Black	Black %
45,779	573	1.3%	14,116	30.8%	27,060	59.1%	2,518	5.5%	2,085	4.6%
Total CVAP	Other CVAP	Other CVAP %	Latino CVAP	Latino CVAP %	Asian CVAP	Asian CVAP %	Black CVAP	Black CVAP %		
33,192	13,800	41.6%	15,423	46.5%	1,821	5.5%	2,148	6.5%		

Ward 6

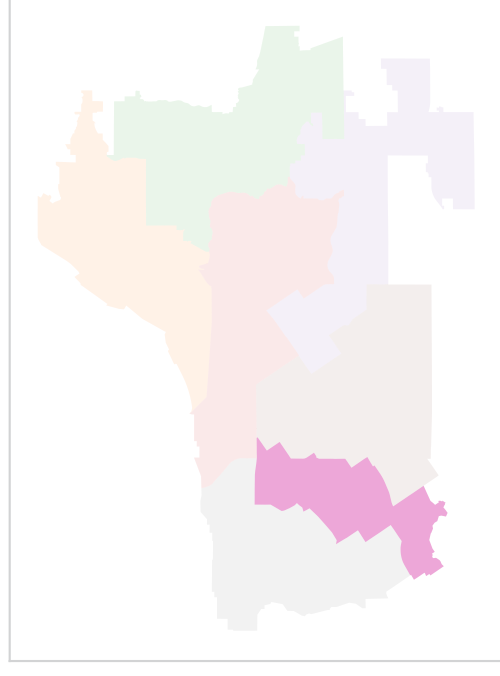
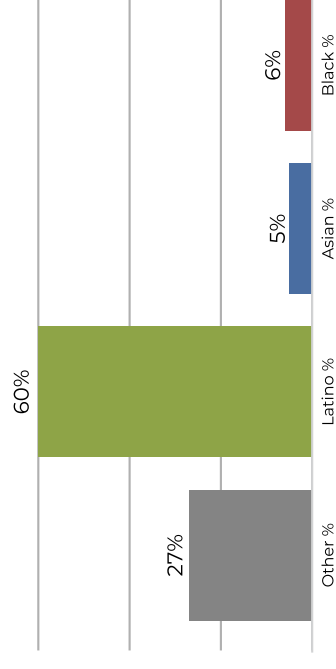


Population	Deviation	Deviation %	Other	Other %	Latino	Latino %	Asian	Asian %	Black	Black %
45,652	446	1.0%	8,988	19.7%	32,220	70.6%	2,254	4.9%	2,190	4.8%
Total CVAP	Other CVAP	Other CVAP %	Latino CVAP	Latino CVAP %	Asian CVAP	Asian CVAP %	Black CVAP	Black CVAP %		
27,335	7,369	27.0%	16,637	60.9%	1,570	5.7%	1,759	6.4%		

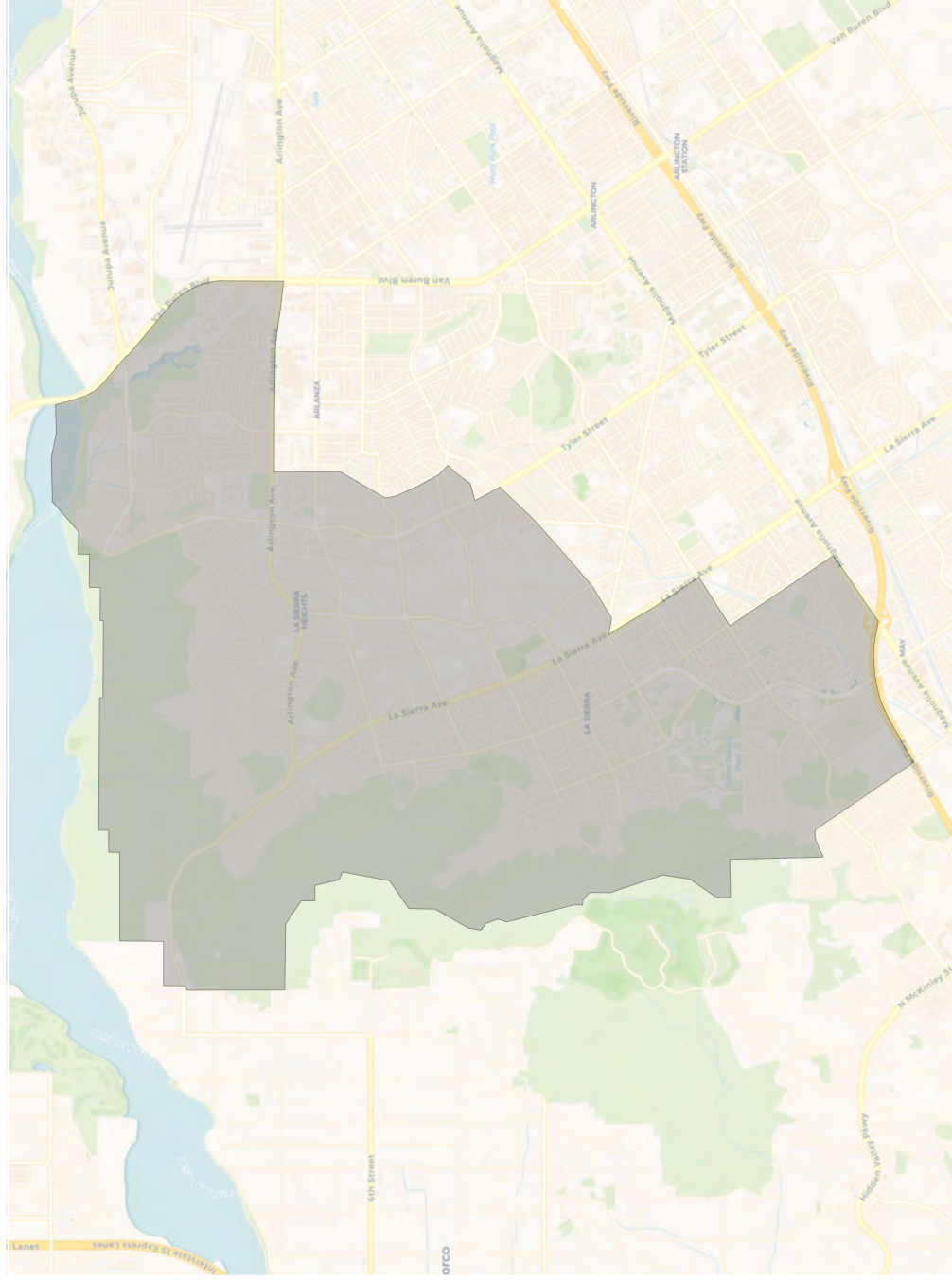
2020 Census



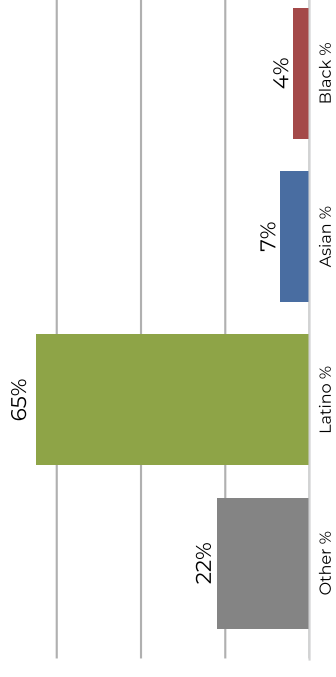
Citizen Voting Age Population



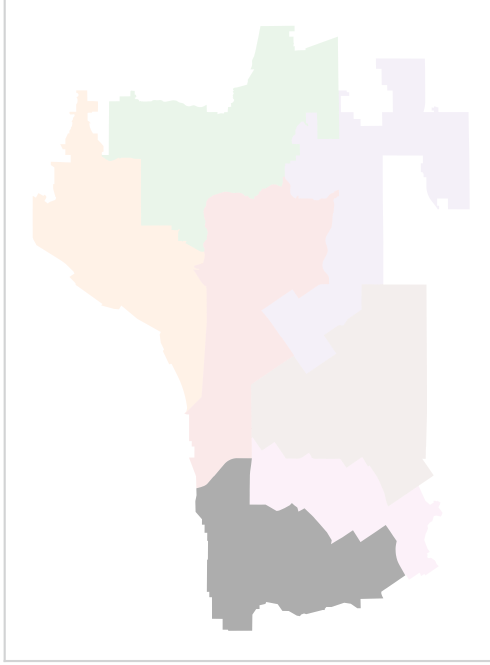
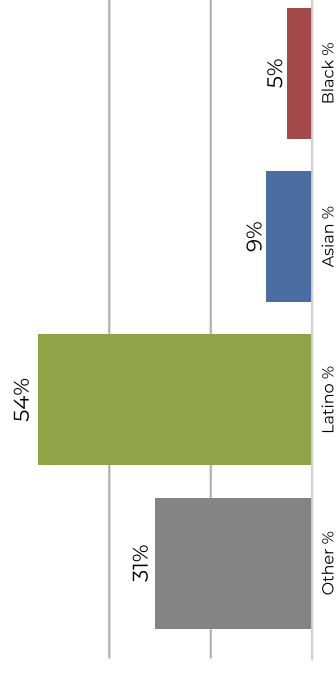
Ward 7



2020 Census



Citizen Voting Age Population



Population	Deviation	Deviation %	Other	Other %	Latino	Latino %	Asian	Asian %	Black	Black %
45,313	107	0.2%	10,347	22.8%	29,612	65.3%	3,224	7.1%	2,130	4.7%
Total CVAP	Other CVAP	Other CVAP %	Latino CVAP	Latino CVAP %	Asian CVAP	Asian CVAP %	Black CVAP	Black CVAP %	Black CVAP %	Black CVAP %
30,814	9,588	31.1%	16,803	54.5%	2,822	9.2%	1,601	5.2%	5.2%	