

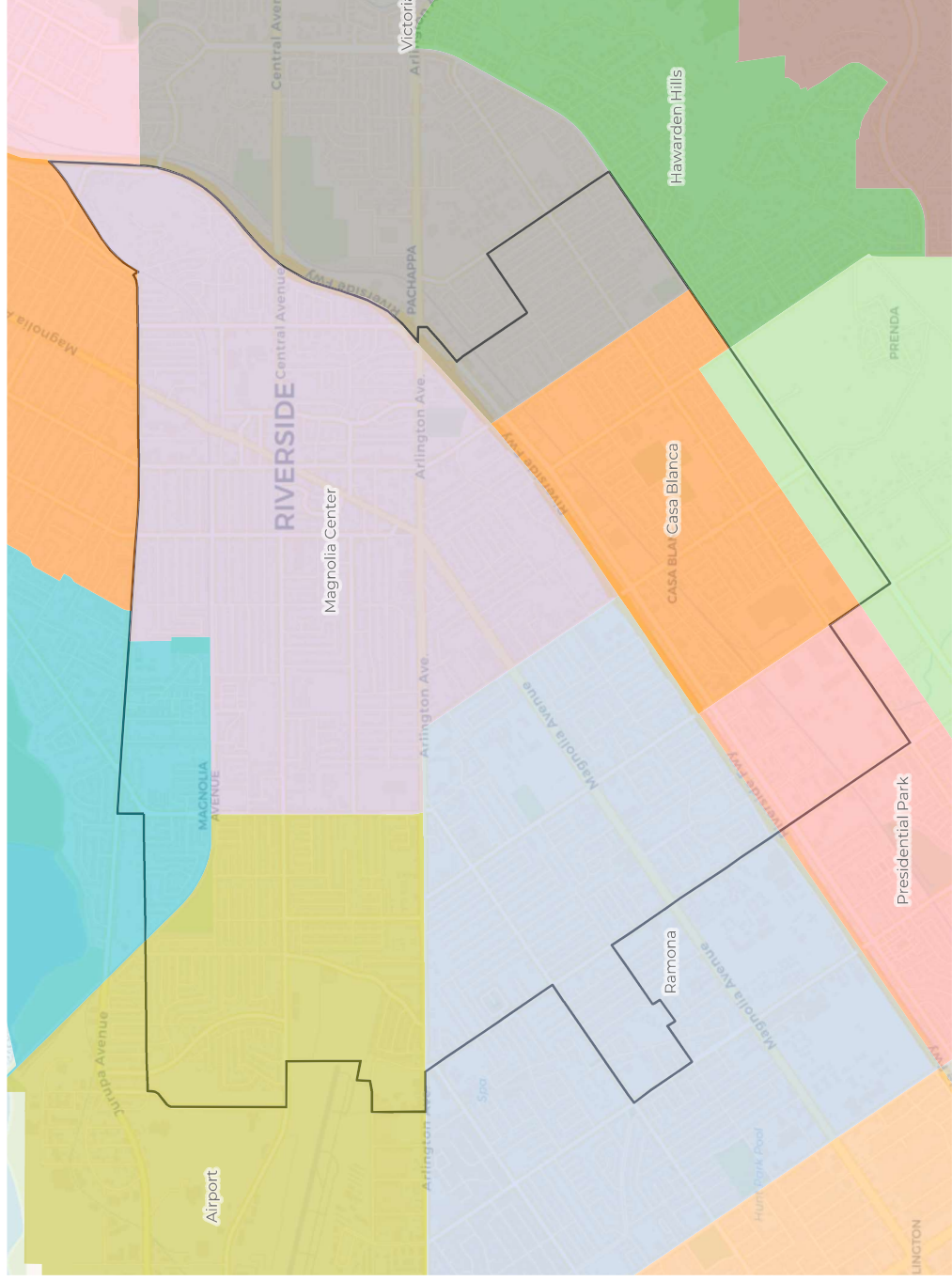
2020 Census

	1	2	3	4	5	6	7
Population	46,094	43,799	45,378	45,312	45,228	45,226	45,408
Deviation	888	-1,407	172	106	22	20	202
Deviation %	2.0%	-3.1%	0.4%	0.2%	0.0%	0.0%	0.4%
Other	12,461	13,268	10,327	9,540	14,292	21,176	20,625
Other %	27.0%	30.3%	22.8%	21.1%	31.6%	46.8%	45.4%
Latino	28,749	27,011	30,944	31,750	24,608	13,927	16,168
Latino %	62.4%	61.7%	68.2%	70.1%	54.4%	30.8%	35.6%
Asian	1,609	1,318	1,989	2,363	3,641	6,301	5,236
Asian %	3.5%	3.0%	4.4%	5.2%	8.1%	13.9%	11.5%
Black	3,275	2,202	2,118	1,659	2,687	3,822	3,379
Black %	7.1%	5.0%	4.7%	3.7%	5.9%	8.5%	7.4%

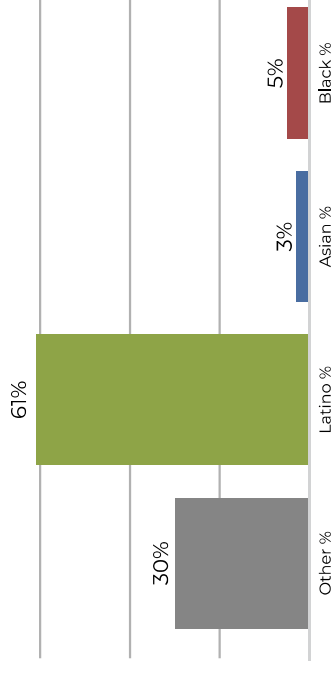
Citizen Voting Age Population (CVAP)

	1	2	3	4	5	6	7
Total CVAP	28,569	30,709	29,546	29,175	31,947	32,980	33,798
Other CVAP	9,621	12,627	10,423	8,597	11,982	17,251	15,460
Other CVAP %	33.7%	41.1%	35.3%	29.5%	37.5%	52.3%	45.7%
Latino CVAP	15,635	15,489	16,023	17,494	14,191	8,934	11,399
Latino CVAP %	54.7%	50.4%	54.2%	60.0%	44.4%	27.1%	33.7%
Asian CVAP	1,073	621	1,423	1,712	3,369	4,076	4,596
Asian CVAP %	3.8%	2.0%	4.8%	5.9%	10.5%	12.4%	13.6%
Black CVAP	2,240	1,972	1,677	1,372	2,405	2,719	2,343
Black CVAP %	7.8%	6.4%	5.7%	4.7%	7.5%	8.2%	6.9%

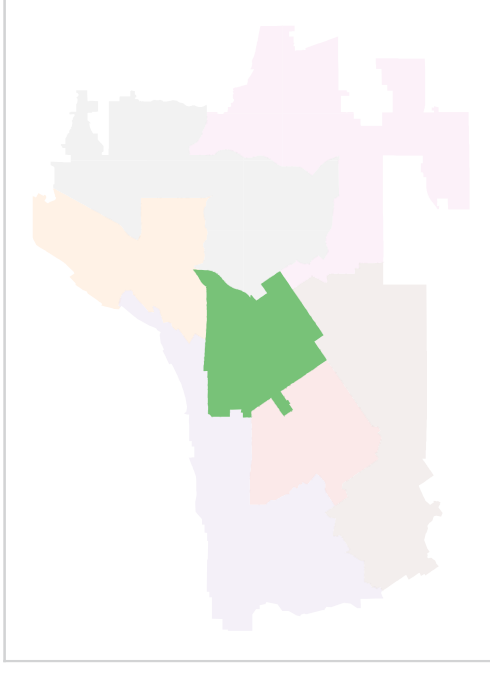
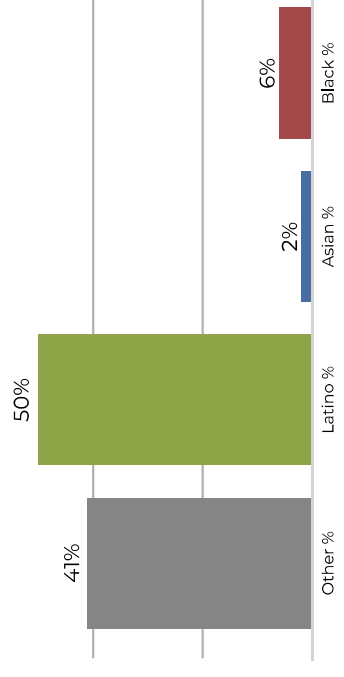
Ward 2



2020 Census

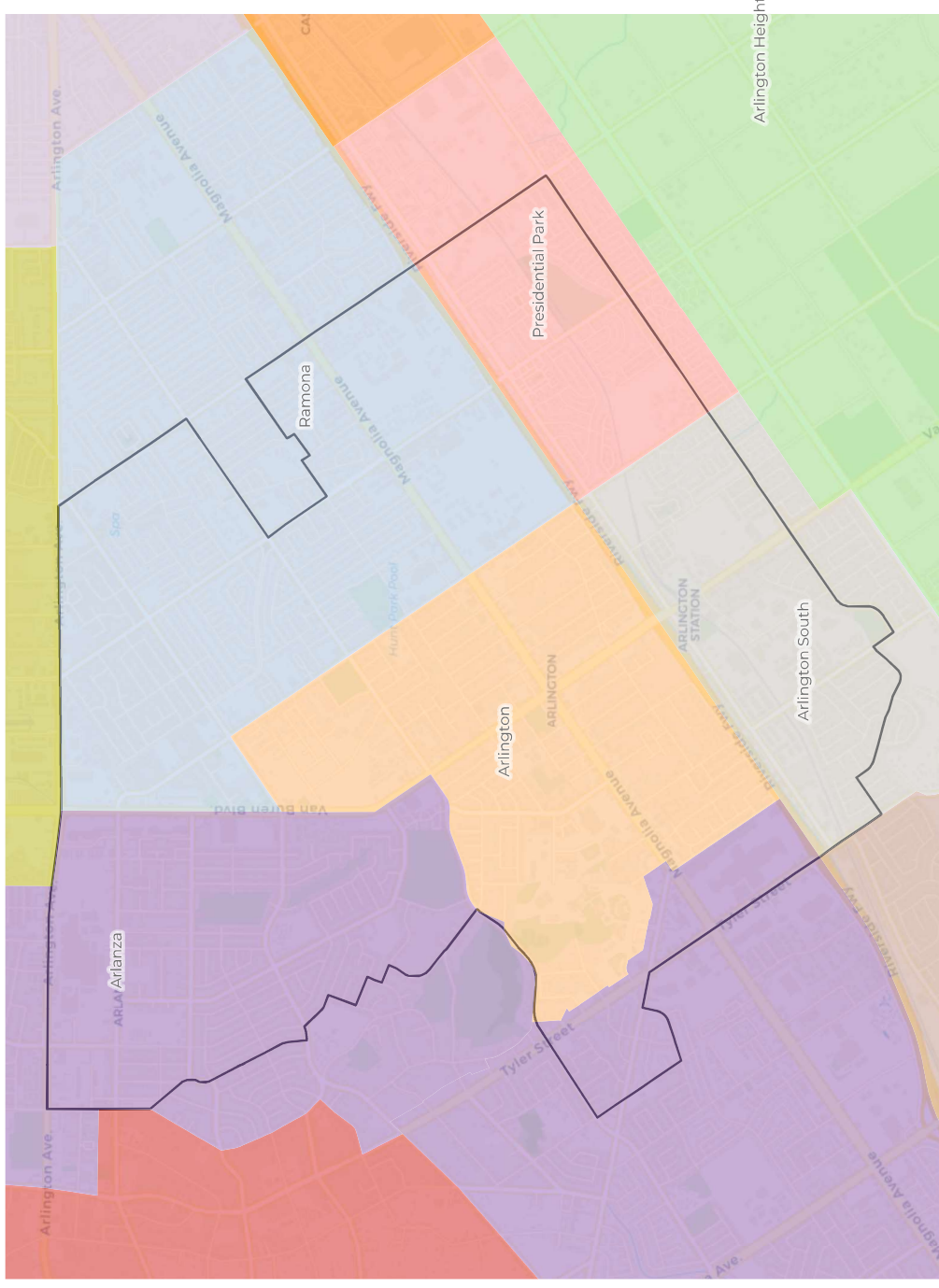


Citizen Voting Age Population

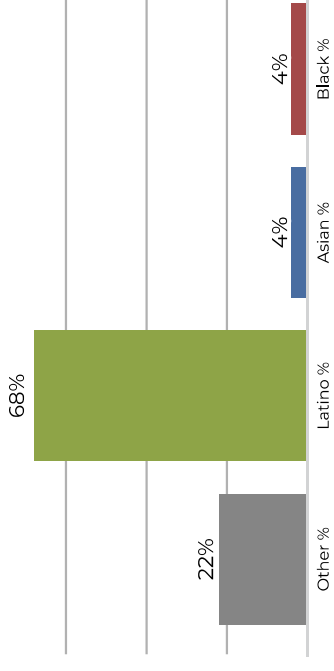


Population	Deviation	Deviation %	Other	Other %	Latino	Latino %	Asian	Asian %	Black	Black %
43,799	-1,407	-3.1%	13,268	30.3%	27,011	61.7%	1,318	3.0%	2,202	5.0%
Total CVAP	Other CVAP	Other CVAP %	Latino CVAP	Latino CVAP %	Asian CVAP	Asian CVAP %	Black CVAP	Black CVAP %		
30,709	12,627	41.1%	15,489	50.4%	621	2.0%	1,972	6.4%		

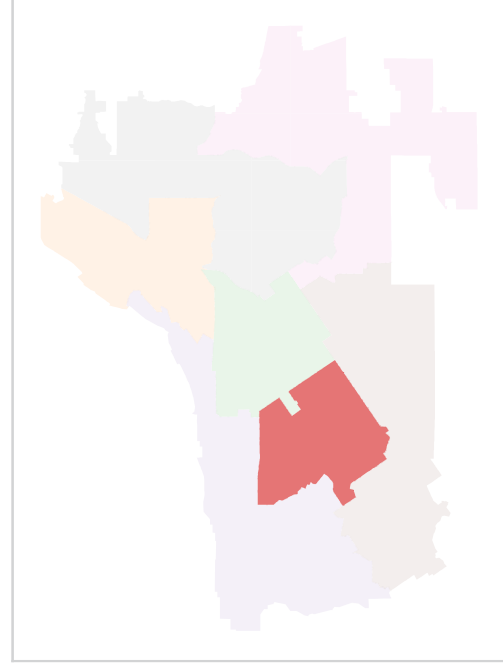
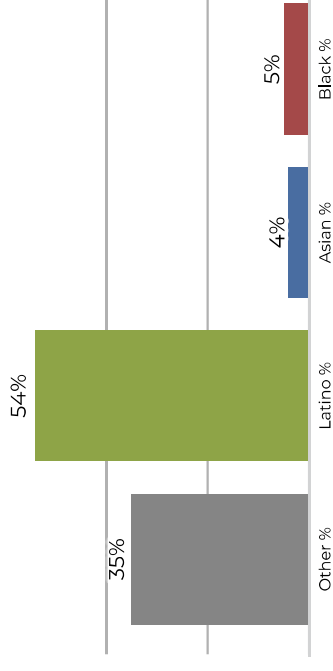
Ward 3



2020 Census

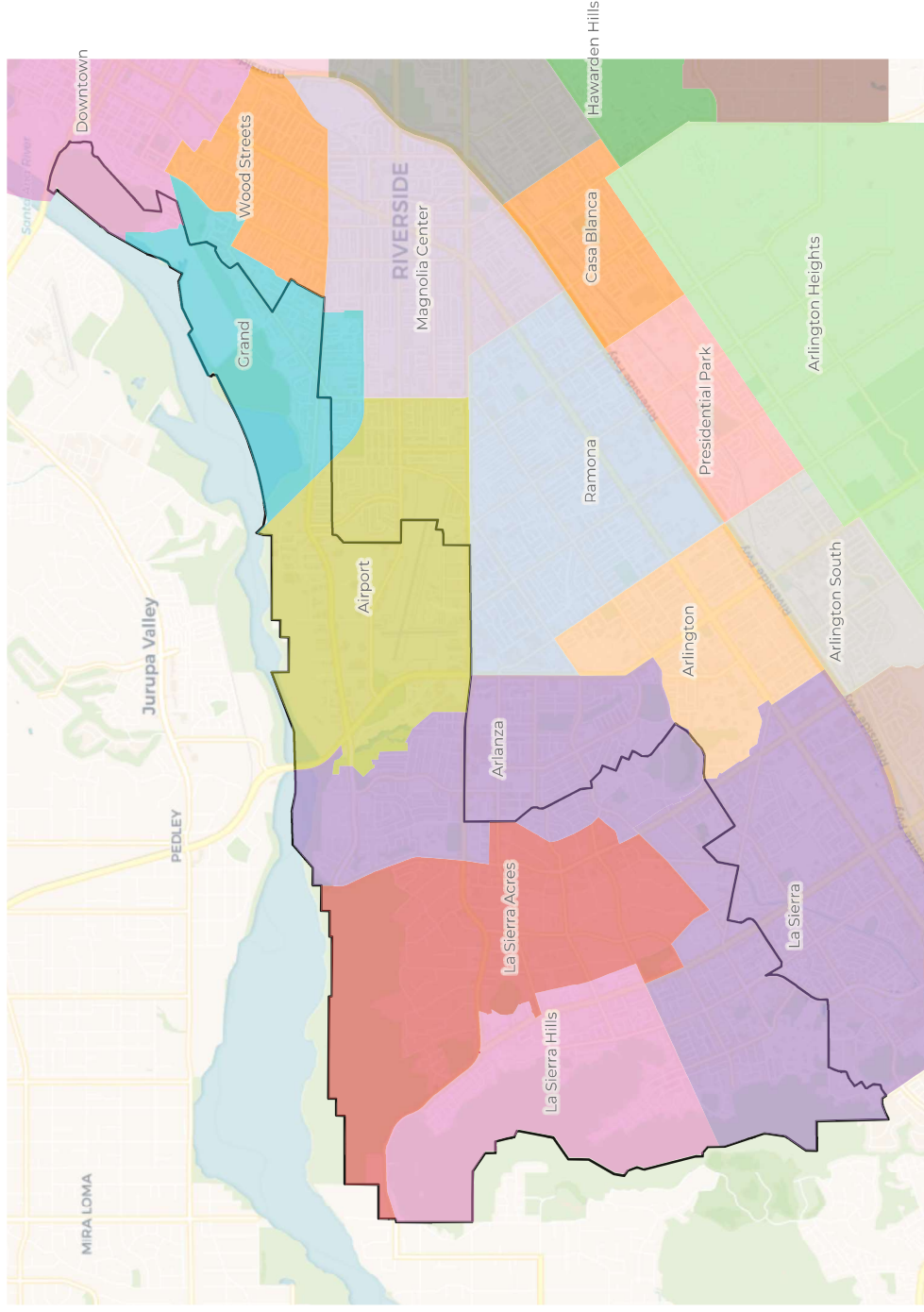


Citizen Voting Age Population

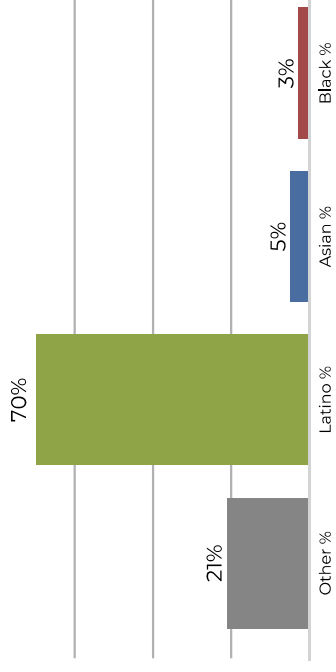


Population	Deviation	Deviation %	Other	Other %	Latino	Latino %	Asian	Asian %	Black	Black %
45,378	172	0.4%	10,327	22.8%	30,944	68.2%	1,989	4.4%	2,118	4.7%
Total CVAP	Other CVAP	Other CVAP %	Latino CVAP	Latino CVAP %	Asian CVAP	Asian CVAP %	Black CVAP	Black CVAP %	Black CVAP %	Black CVAP %
29,546	10,423	35.3%	16,023	54.2%	1,423	4.8%	1,677	5.7%	5.7%	

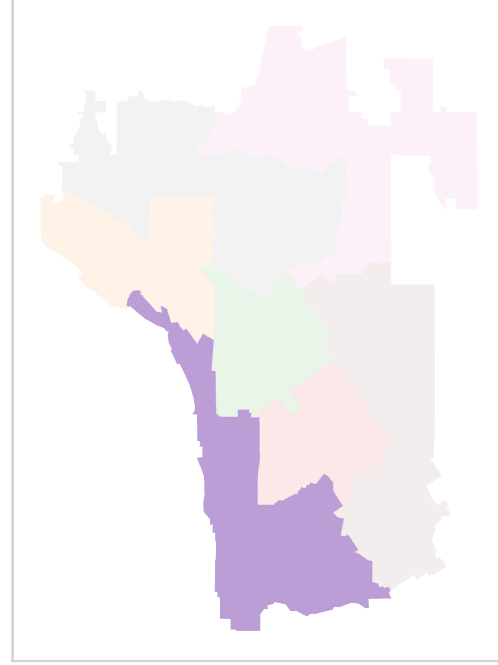
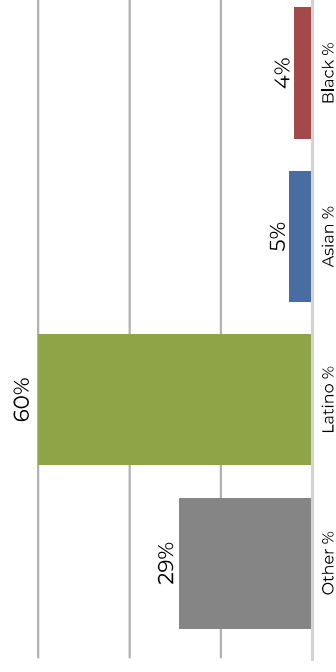
Ward 4



2020 Census

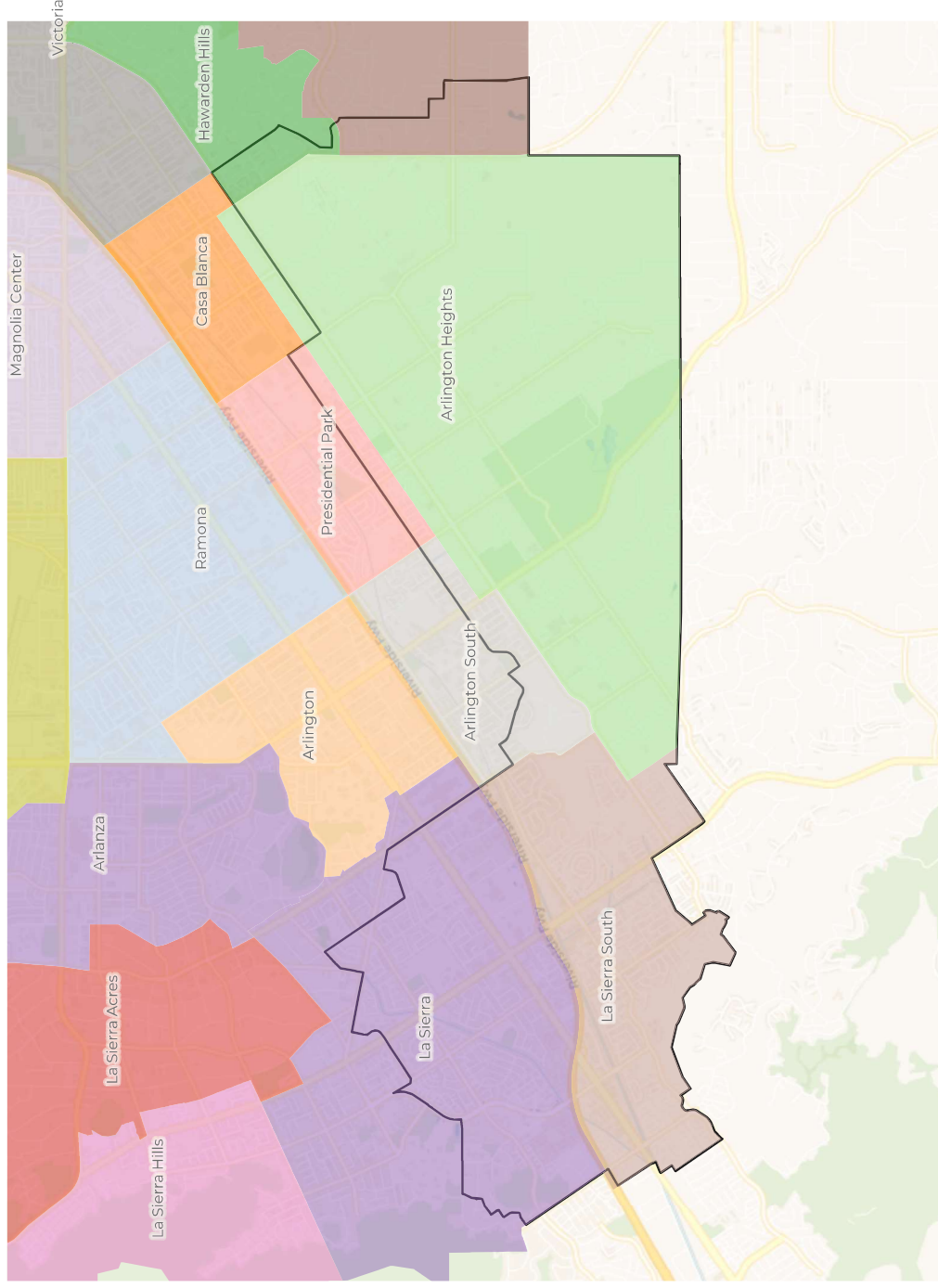


Citizen Voting Age Population

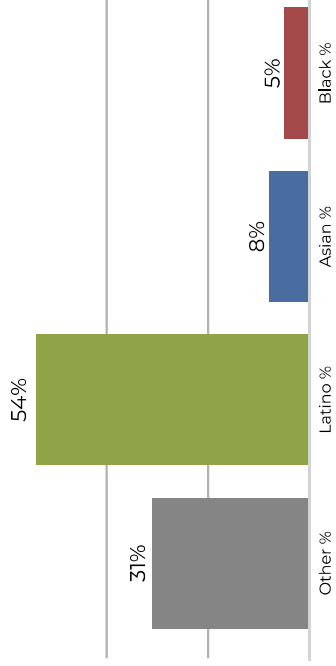


Population	Deviation	Deviation %	Other	Other %	Latino	Latino %	Asian	Asian %	Black	Black %
45,312	106	0.2%	9,540	21.1%	31,750	70.1%	2,363	5.2%	1,659	3.7%
Total CVAP	8,597	29.5%	17,494	60.0%	1,712	5.9%	1,372	4.7%		

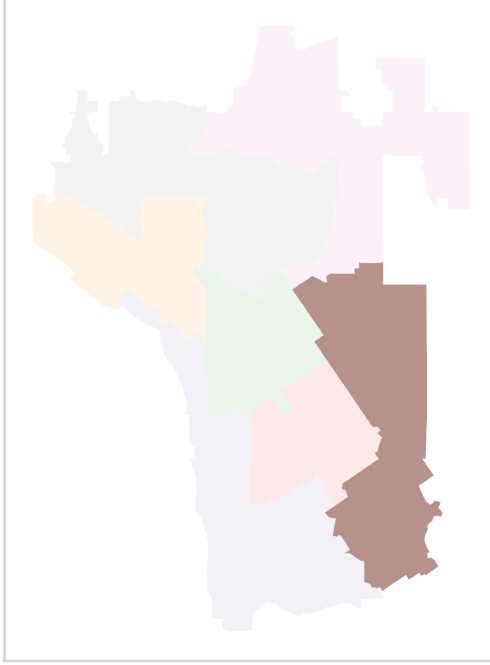
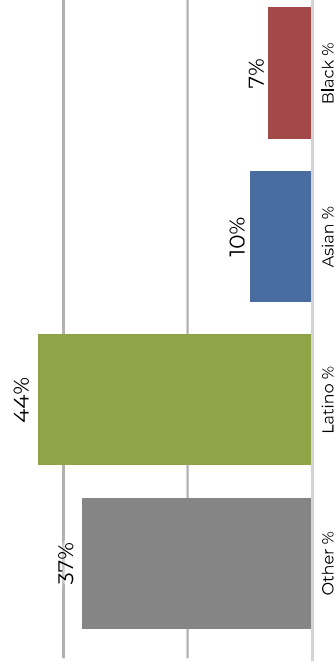
Ward 5



2020 Census

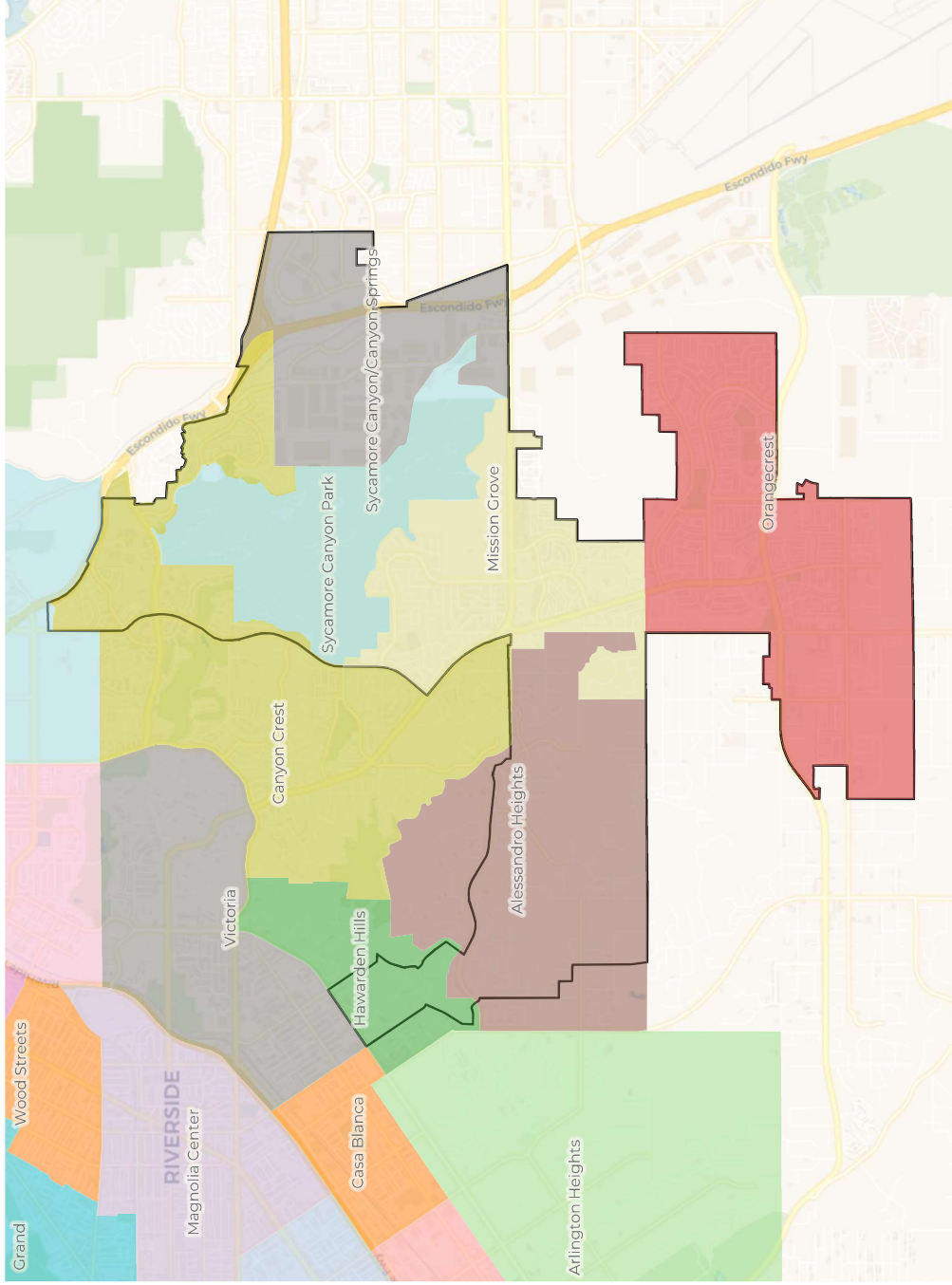


Citizen Voting Age Population

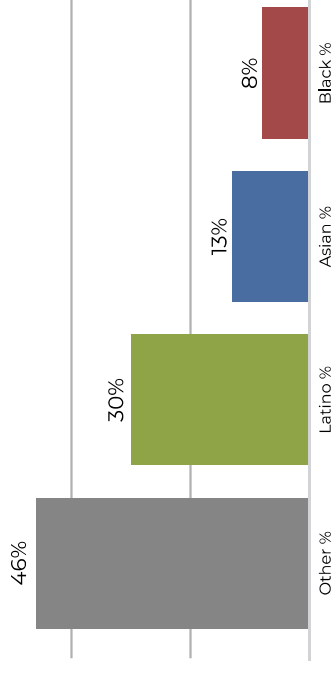


Population	Deviation	Deviation %	Other	Other %	Latino	Latino %	Asian	Asian %	Black	Black %
45,228	22	0.0%	14,292	31.6%	24,608	54.4%	3,641	8.1%	2,687	5.9%
Total CVAP			Other CVAP		Latino CVAP		Asian CVAP		Black CVAP	
31,947	11,982	37.5%	14,191	44.4%	3,369	10.5%	2,405	7.5%		

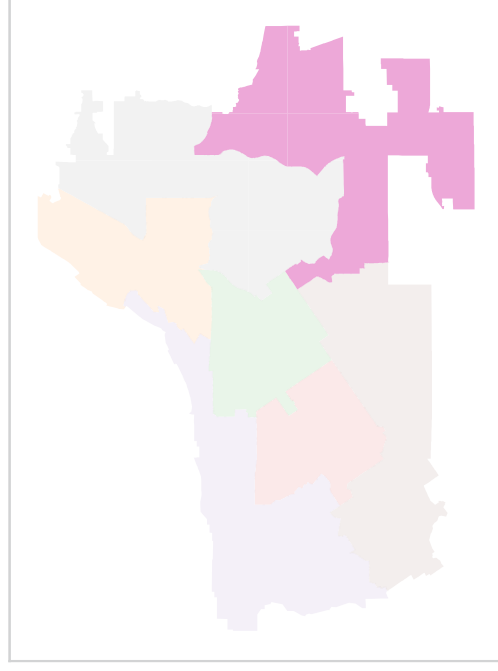
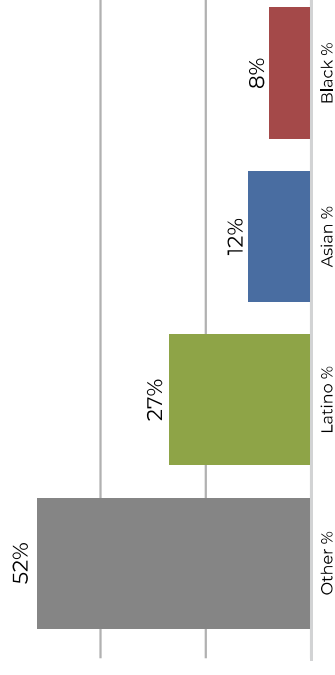
Ward 6



2020 Census

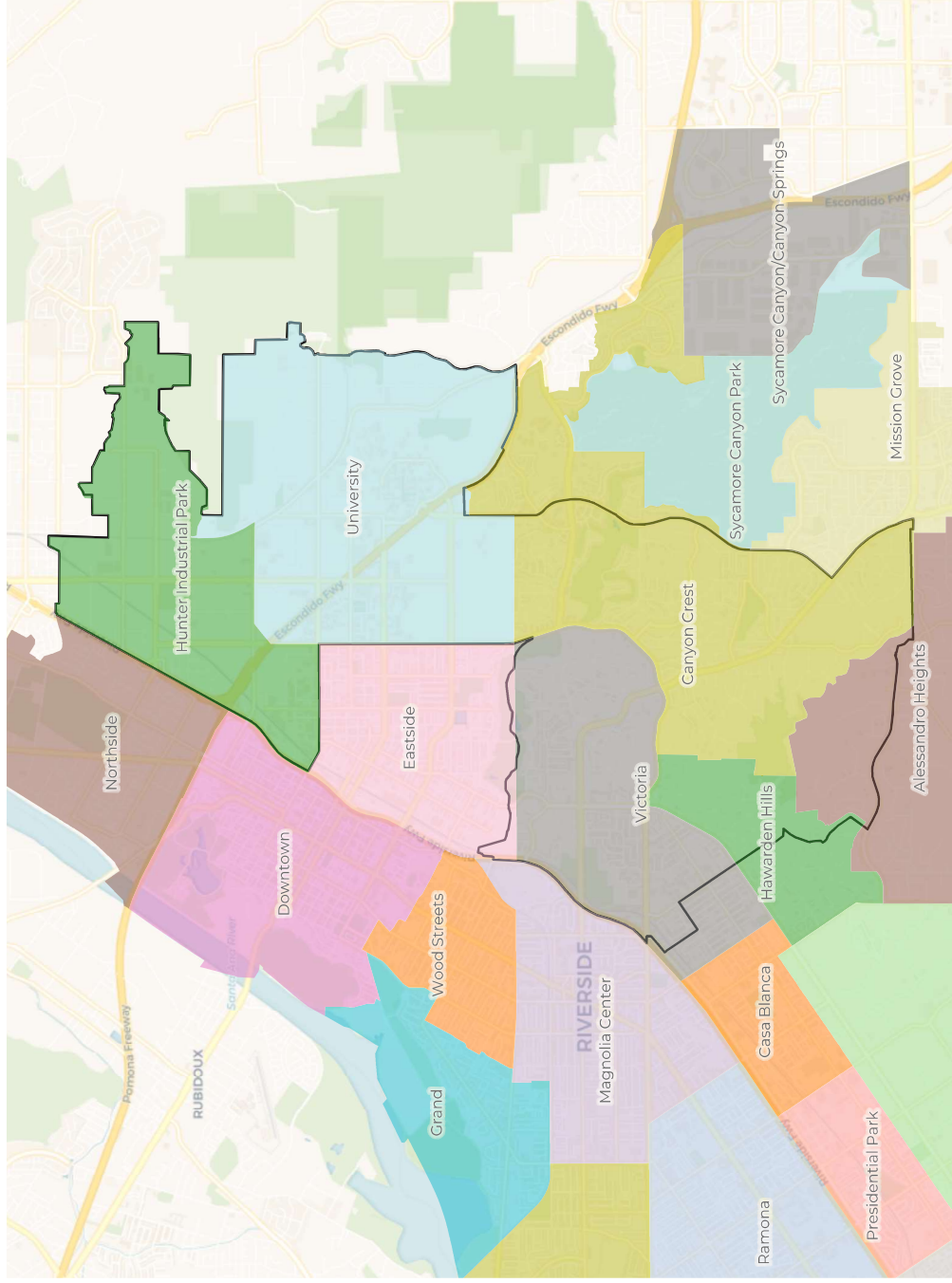


Citizen Voting Age Population

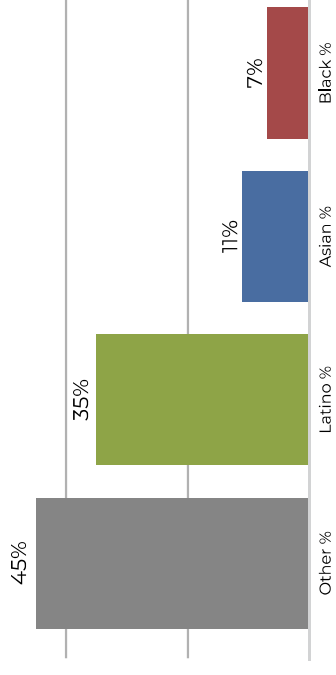


Population	Deviation	Deviation %	Other	Other %	Latino	Latino %	Asian	Asian %	Black	Black %
45,226	20	0.0%	21,176	46.8%	13,927	30.8%	6,301	13.9%	3,822	8.5%
Total CVAP	Other CVAP	Other CVAP %	Latino CVAP	Latino CVAP %	Asian CVAP	Asian CVAP %	Black CVAP	Black CVAP %		
32,980	17,251	52.3%	8,934	27.1%	4,076	12.4%	2,719	8.2%		

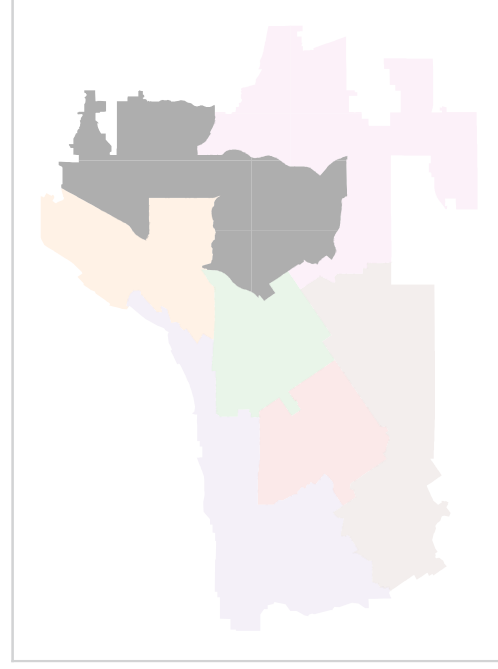
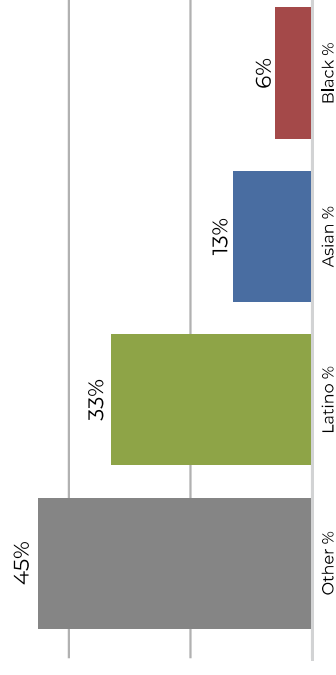
Ward 7



2020 Census



Citizen Voting Age Population



Population	Deviation	Deviation %	Other	Other %	Latino	Latino %	Asian	Asian %	Black	Black %
45,408	202	0.4%	20,625	45.4%	16,168	35.6%	5,236	11.5%	3,379	7.4%
Total CVAP	Other CVAP	Other CVAP %	Latino CVAP	Latino CVAP %	Asian CVAP	Asian CVAP %	Black CVAP	Black CVAP %		
33,798	15,460	45.7%	11,399	33.7%	4,596	13.6%	2,343	6.9%		