

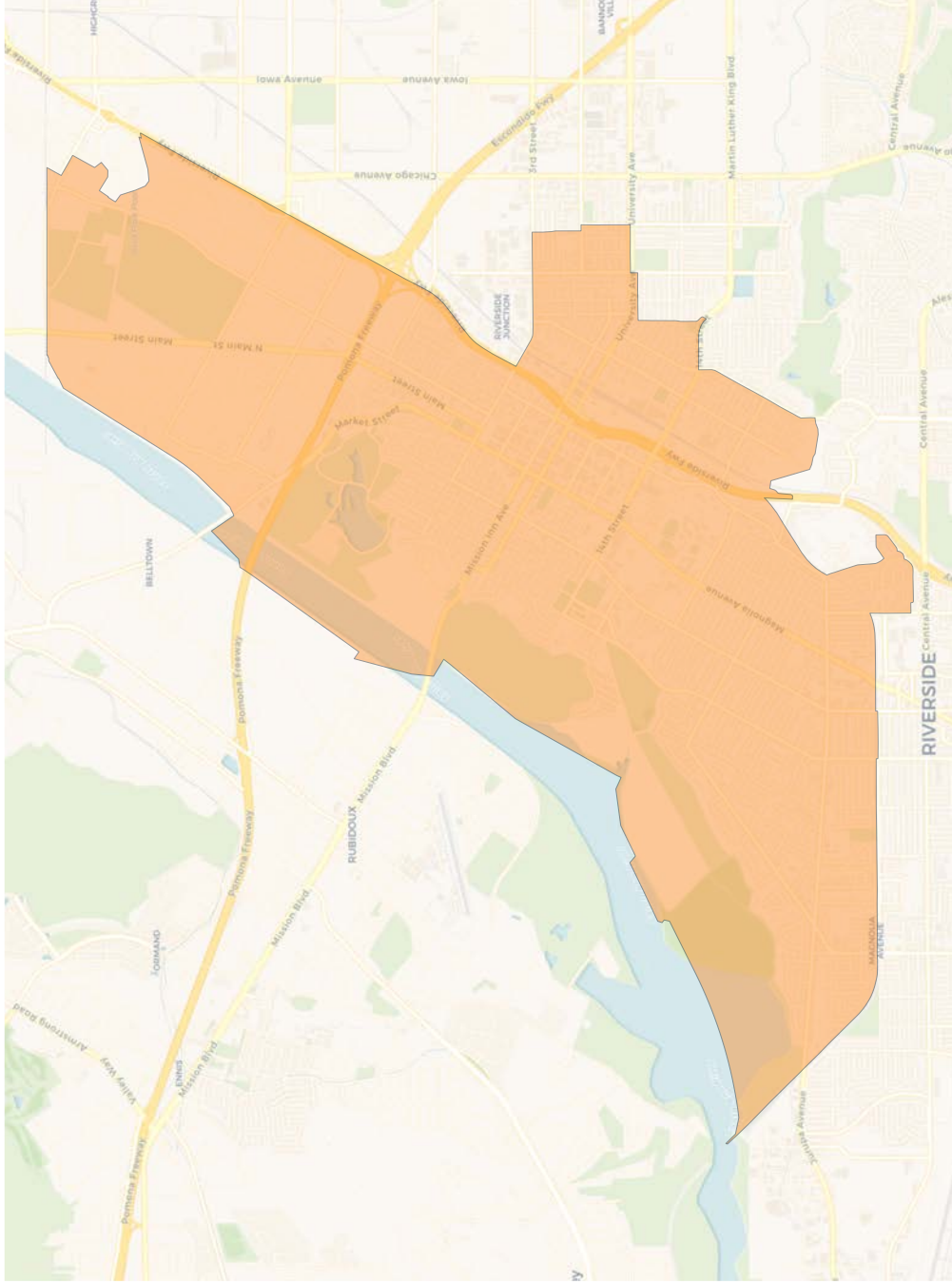
2020 Census

	1	2	3	4	5	6	7
Population	45,013	45,514	47,105	44,116	45,366	43,948	45,383
Deviation	-193	308	1,899	-1,090	160	-1,258	177
Deviation %	-0.4%	0.7%	4.2%	-2.4%	0.4%	-2.8%	0.4%
Other	14,535	15,632	11,233	20,979	20,288	8,734	10,288
Other %	32.3%	34.3%	23.8%	47.6%	44.7%	19.9%	22.7%
Latino	26,223	20,212	31,971	13,617	20,166	30,889	30,079
Latino %	58.3%	44.4%	67.9%	30.9%	44.5%	70.3%	66.3%
Asian	1,540	5,363	1,630	5,913	2,656	2,655	2,700
Asian %	3.4%	11.8%	3.5%	13.4%	5.9%	6.0%	5.9%
Black	2,715	4,307	2,271	3,607	2,256	1,670	2,316
Black %	6.0%	9.5%	4.8%	8.2%	5.0%	3.8%	5.1%

Citizen Voting Age Population (CVAP)

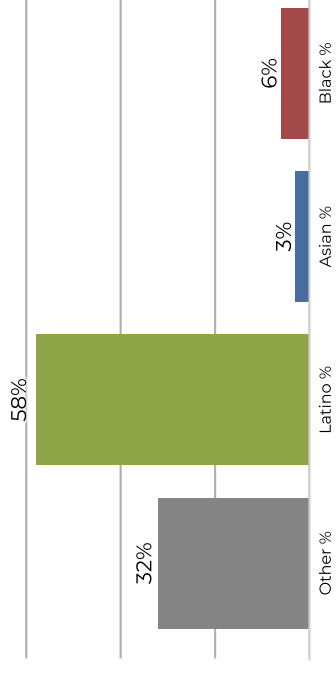
	1	2	3	4	5	6	7
Total CVAP	29,127	32,432	31,027	32,428	34,329	28,124	29,257
Other CVAP	11,296	12,175	11,374	17,228	16,990	8,267	8,631
Other CVAP %	38.8%	37.5%	36.7%	53.1%	49.5%	29.4%	29.5%
Latino CVAP	15,290	13,184	16,860	8,729	12,291	16,093	16,718
Latino CVAP %	52.5%	40.7%	54.3%	26.9%	35.8%	57.2%	57.1%
Asian CVAP	972	4,047	862	3,857	2,721	2,402	2,009
Asian CVAP %	3.3%	12.5%	2.8%	11.9%	7.9%	8.5%	6.9%
Black CVAP	1,569	3,026	1,931	2,614	2,327	1,362	1,899
Black CVAP %	5.4%	9.3%	6.2%	8.1%	6.8%	4.8%	6.5%

District 1

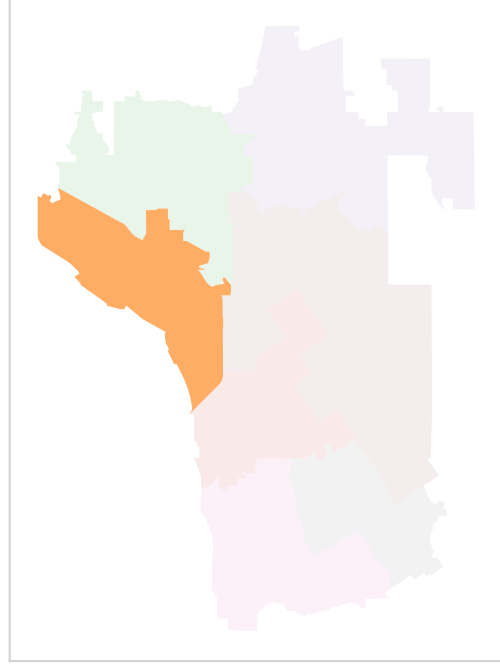
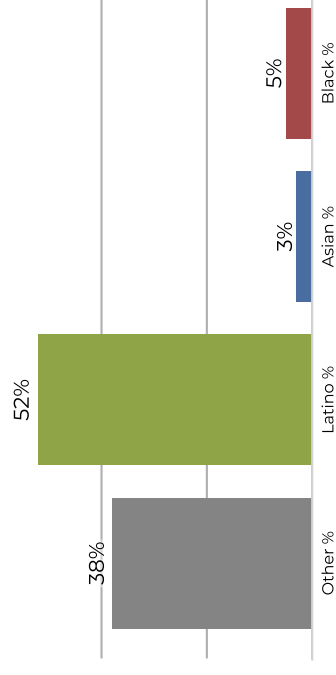


Population	Deviation	Deviation %	Other	Other %	Latino	Latino %	Asian	Asian %	Black	Black %
45,013	-193	-0.4%	14,535	32.3%	26,223	58.3%	1,540	3.4%	2,715	6.0%
Total CVAP	Other CVAP	Other CVAP %	Latino CVAP	Latino CVAP %	Asian CVAP	Asian CVAP %	Black CVAP	Black CVAP %		
29,127	11,296	38.8%	15,290	52.5%	972	3.3%	1,569	5.4%		

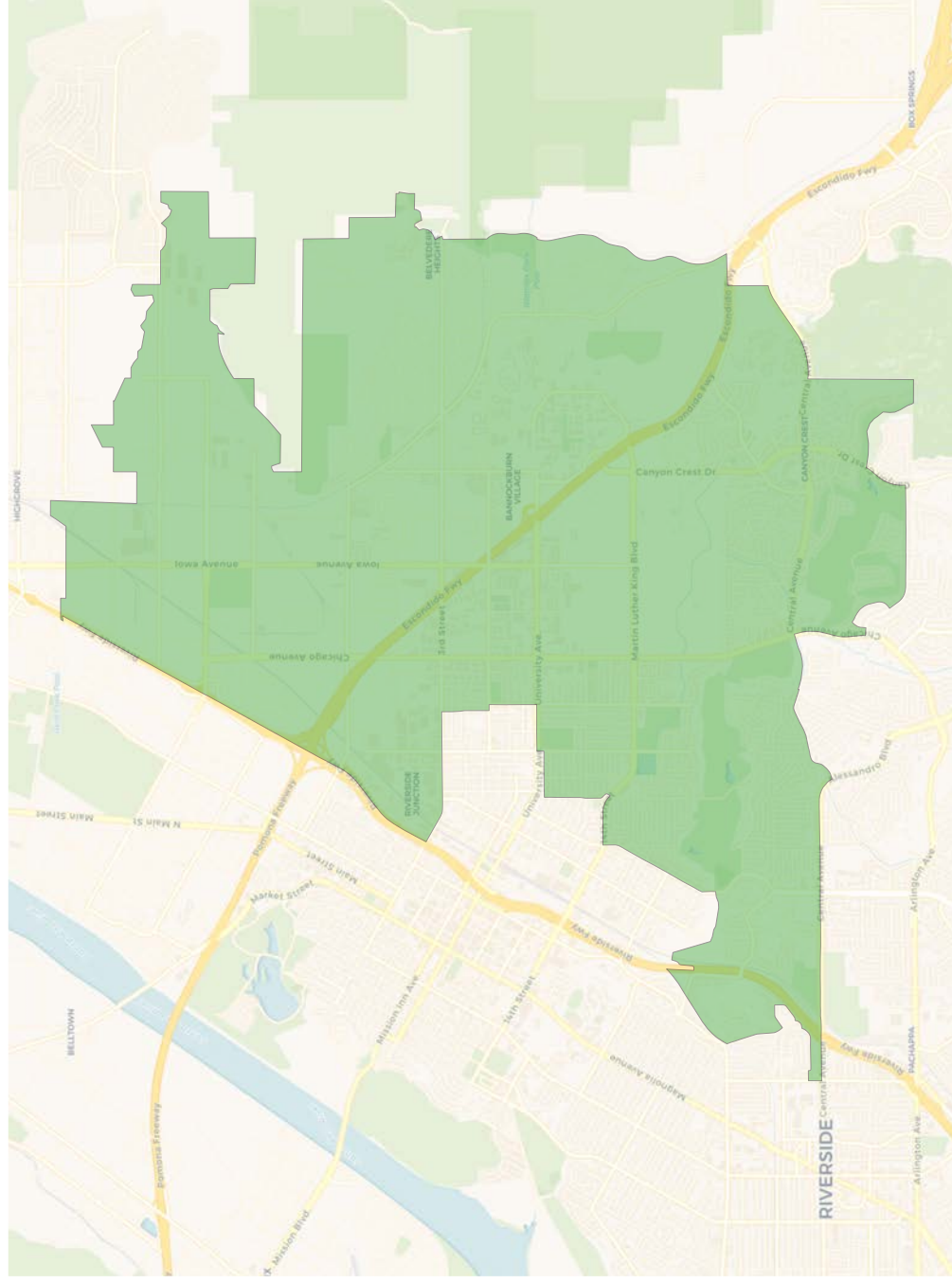
2020 Census



Citizen Voting Age Population

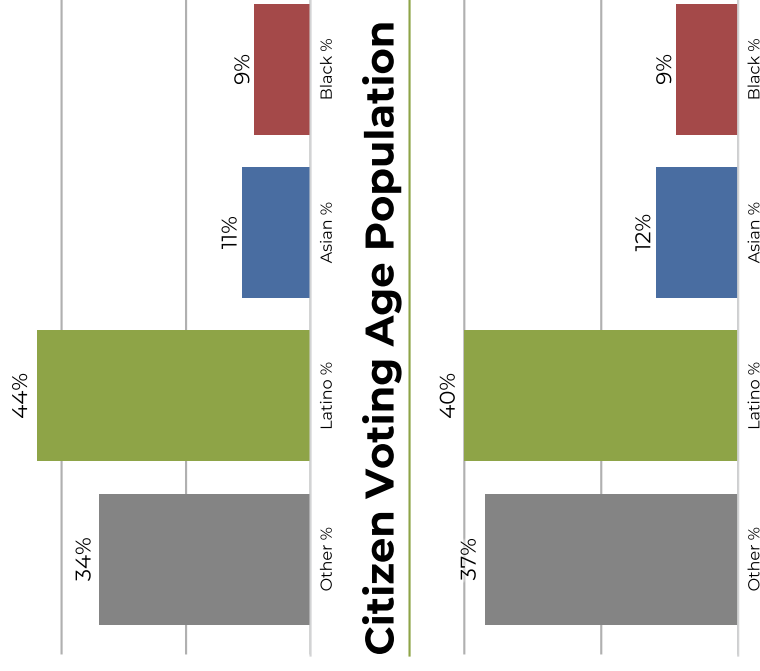


District 2

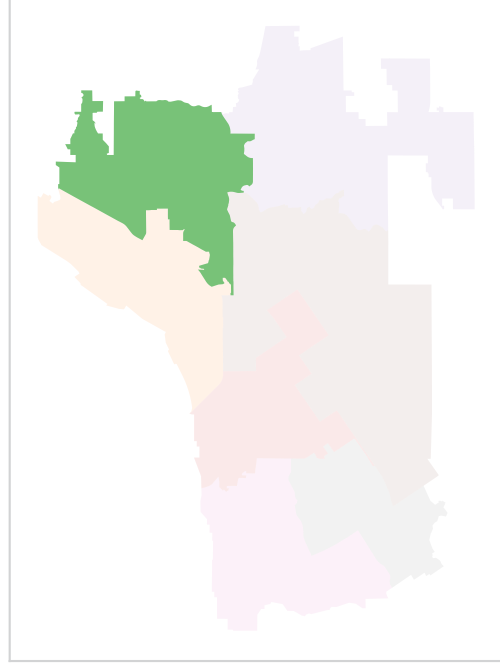


Population	Deviation	Deviation %	Other	Other %	Latino	Latino %	Asian	Asian %	Black	Black %
45,514	308	0.7%	15,632	34.3%	20,212	44.4%	5,363	11.8%	4,307	9.5%
Total CVAP	Other CVAP	Other CVAP %	Latino CVAP	Latino CVAP %	Asian CVAP	Asian CVAP %	Black CVAP	Black CVAP %		
32,432	12,175	37.5%	13,184	40.7%	4,047	12.5%	3,026	9.3%		

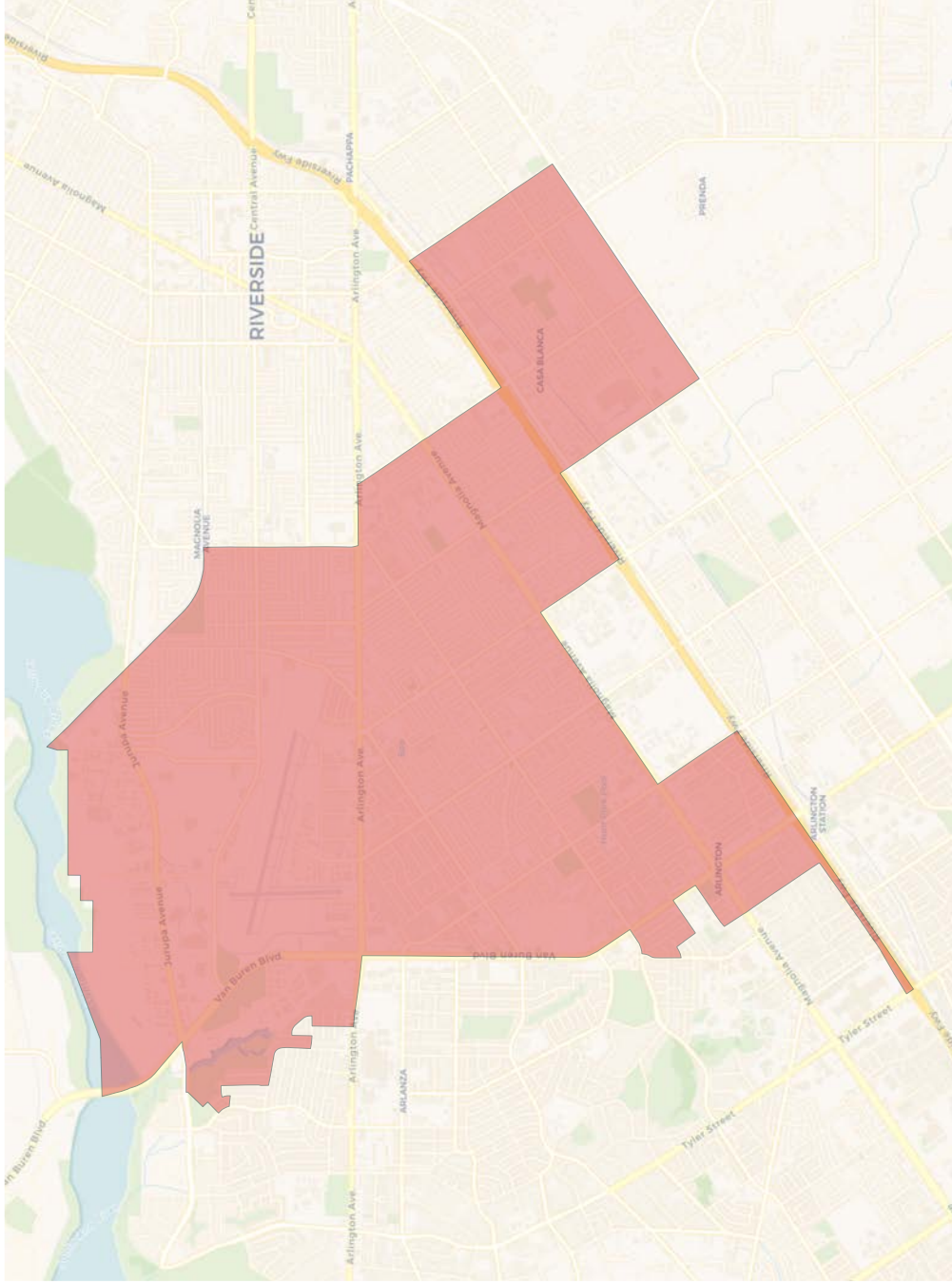
2020 Census



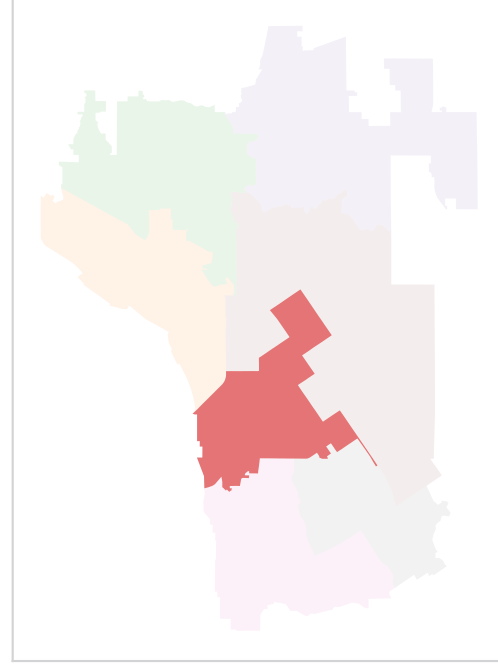
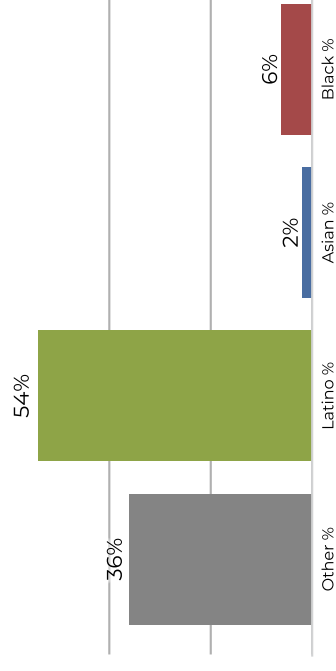
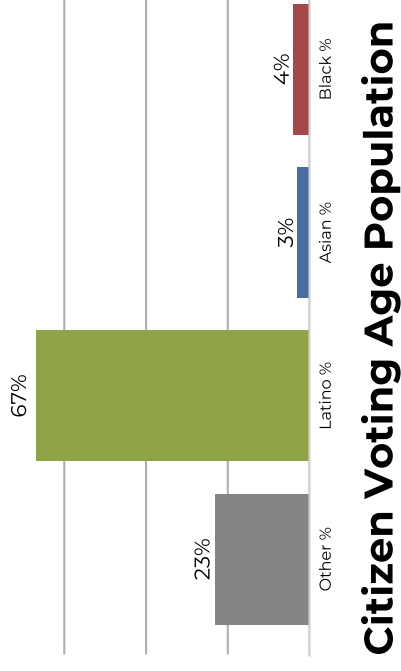
Citizen Voting Age Population



District 3

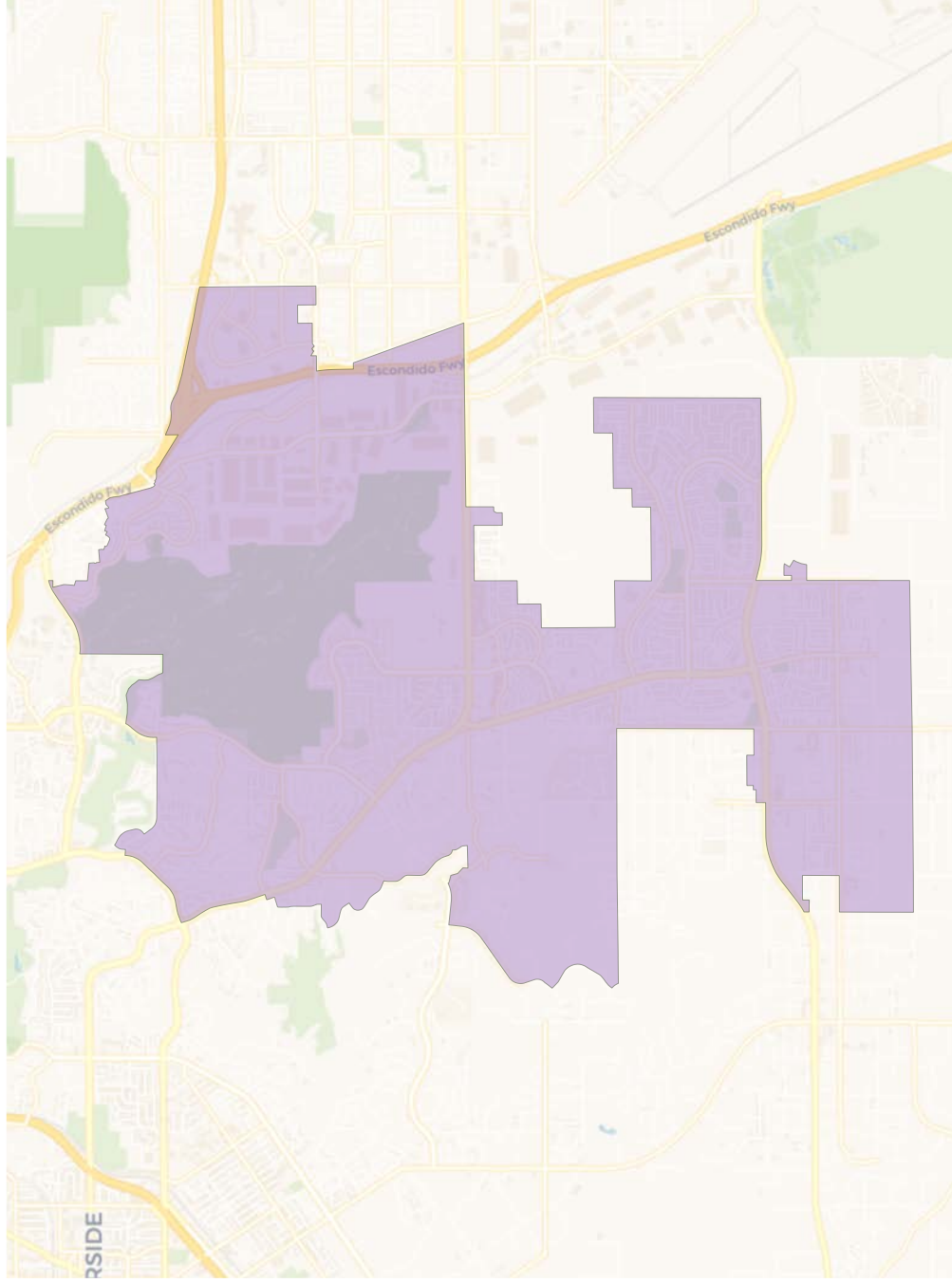


2020 Census

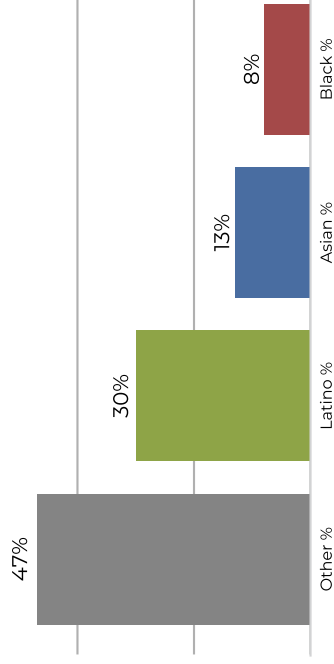


Population	Deviation	Deviation %	Other	Other %	Latino	Latino %	Asian	Asian %	Black	Black %
47,105	1,899	4.2%	11,233	23.8%	31,971	67.9%	1,630	3.5%	2,271	4.8%
Total CVAP	Other CVAP	Other CVAP %	Latino CVAP	Latino CVAP %	Asian CVAP	Asian CVAP %	Black CVAP	Black CVAP %		
31,027	11,374	36.7%	16,860	54.3%	862	2.8%	1,931	6.2%		

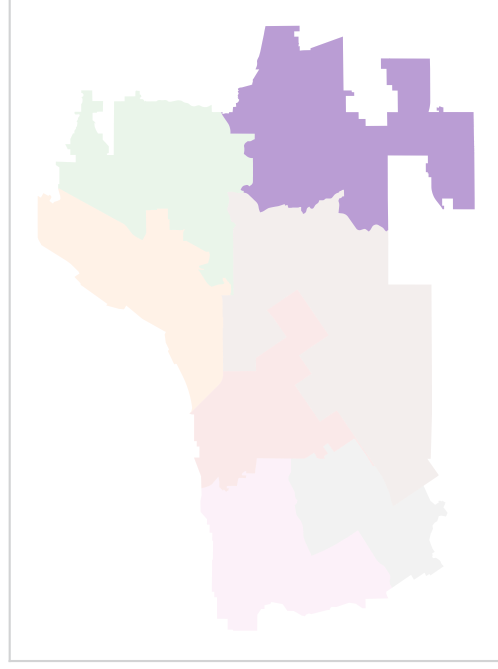
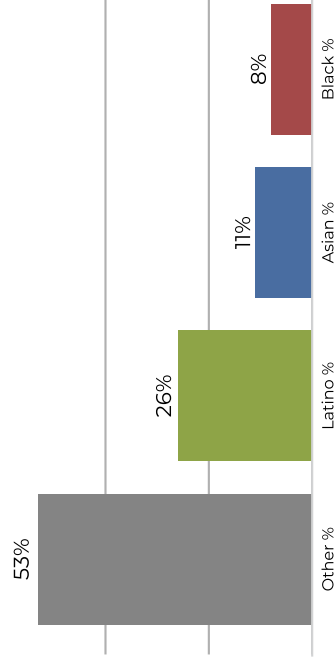
District 4



2020 Census

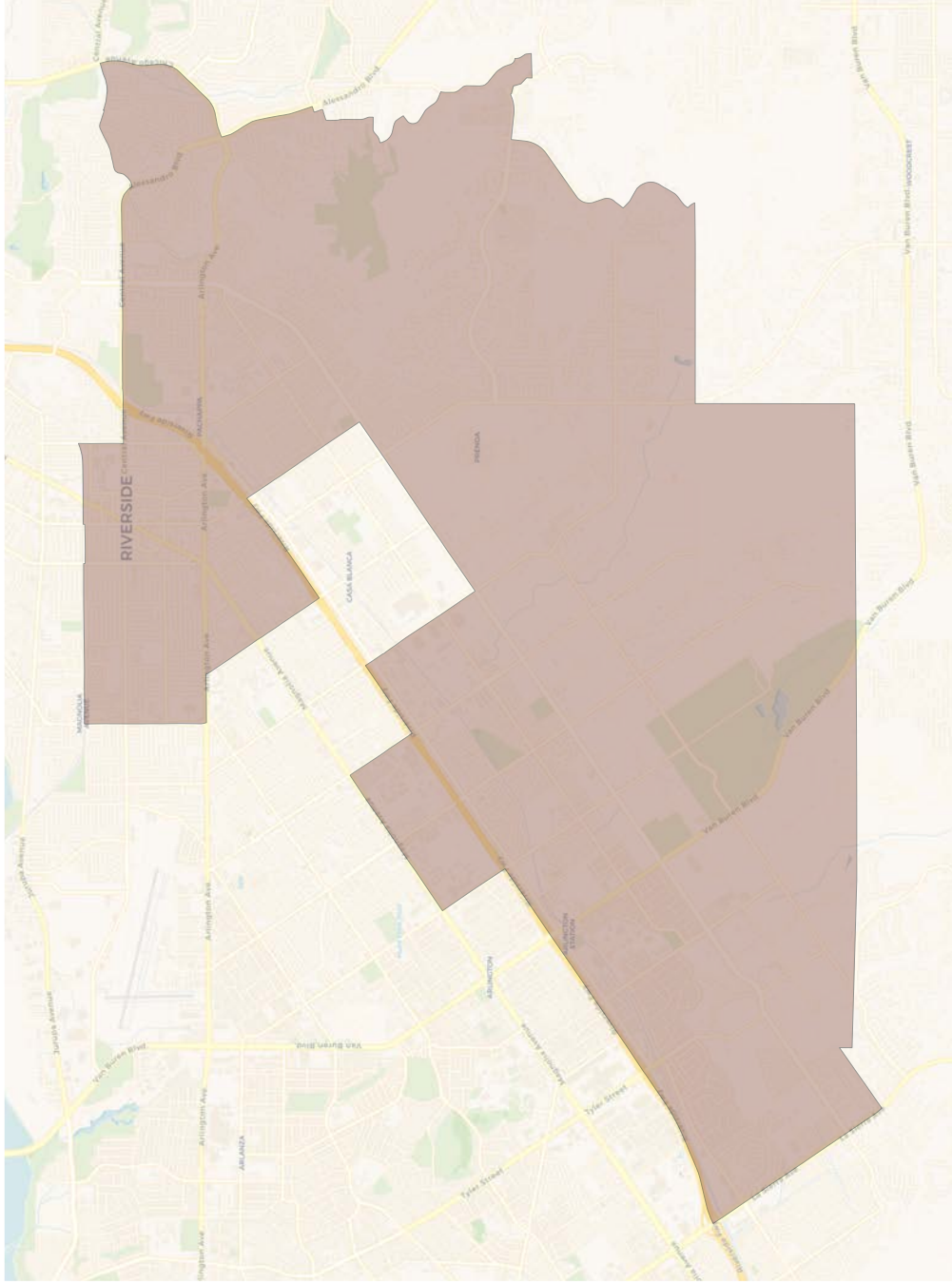


Citizen Voting Age Population

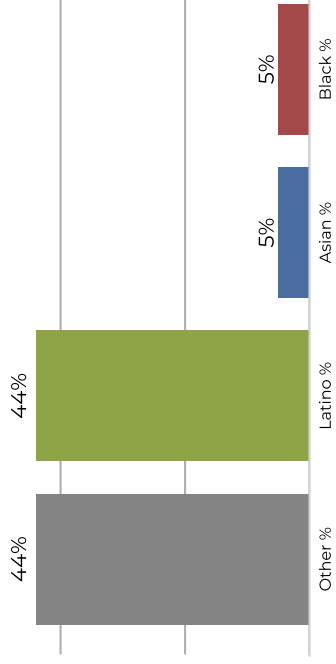


Population	Deviation	Deviation %	Other	Other %	Latino	Latino %	Asian	Asian %	Black	Black %
44,116	-1,090	-2.4%	20,979	47.6%	13,617	30.9%	5,913	13.4%	3,607	8.2%
Total CVAP	Other CVAP	Other CVAP %	Latino CVAP	Latino CVAP %	Asian CVAP	Asian CVAP %	Black CVAP	Black CVAP %		
32,428	17,228	53.1%	8,729	26.9%	3,857	11.9%	2,614	8.1%		

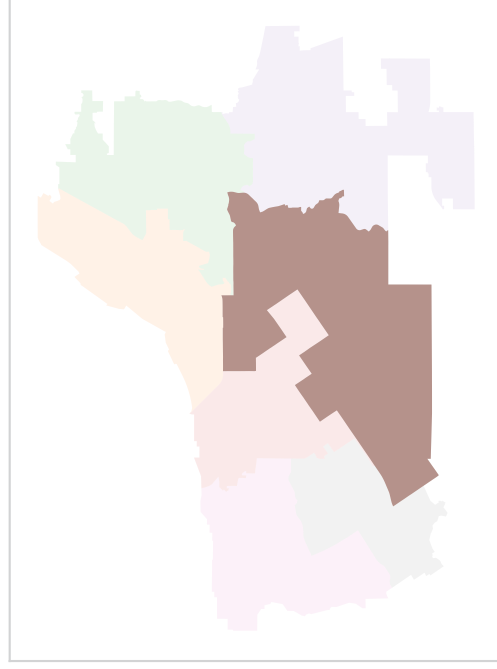
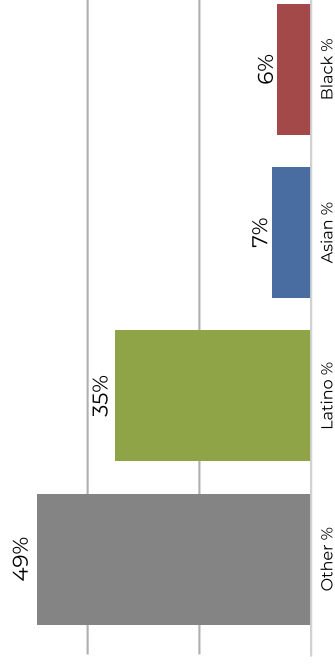
District 5



2020 Census

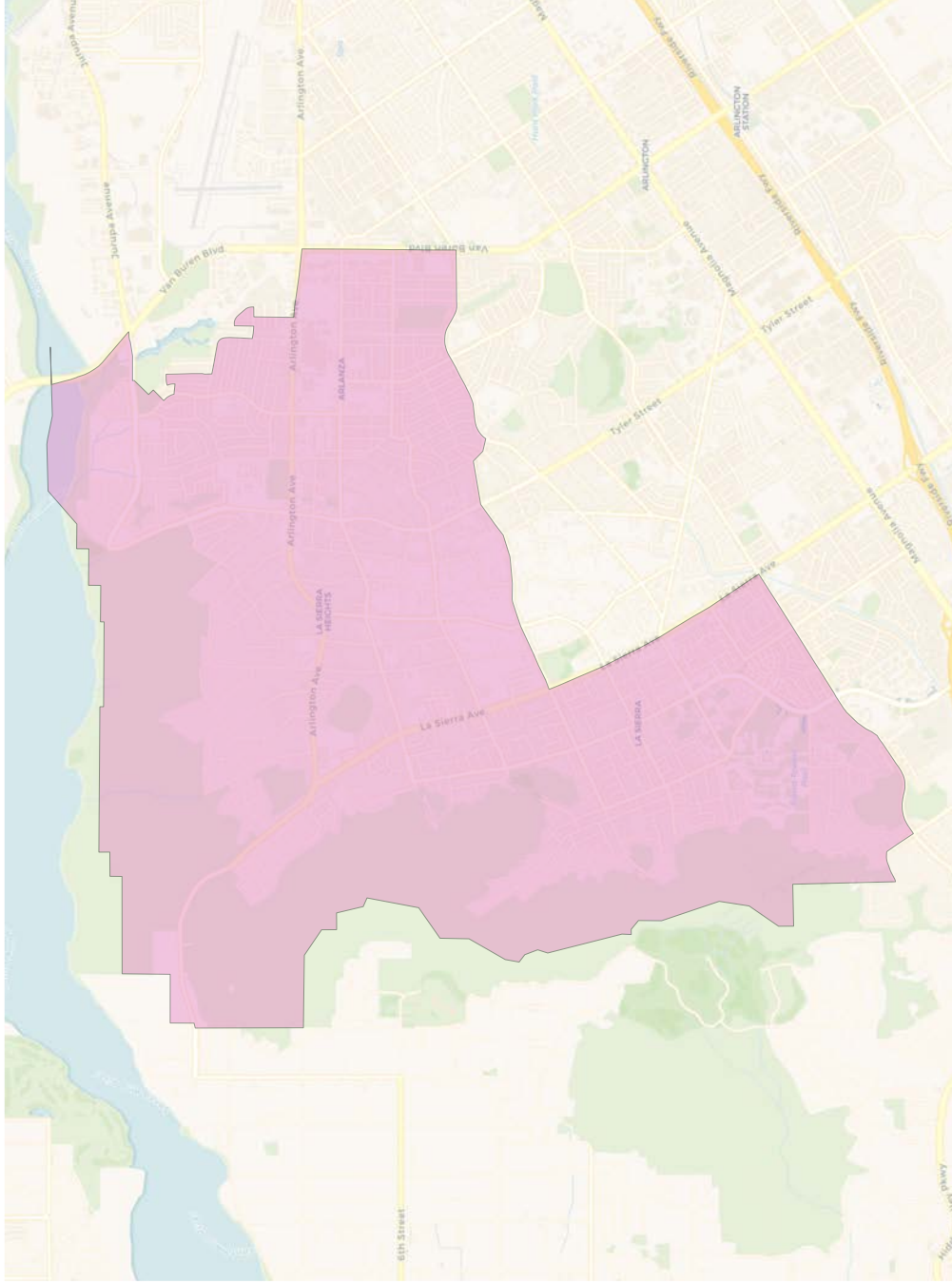


Citizen Voting Age Population

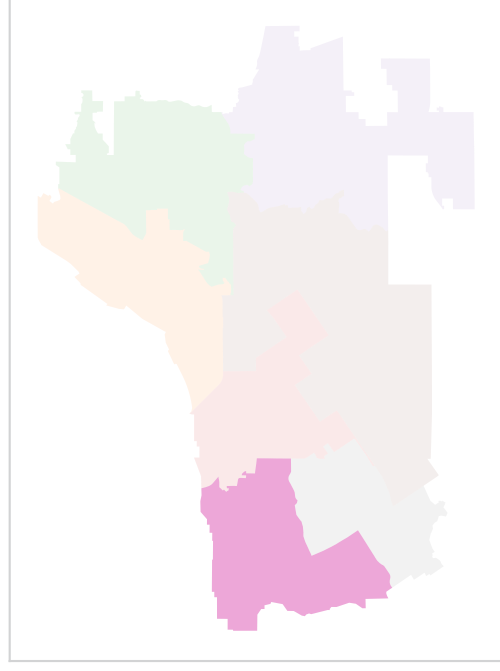
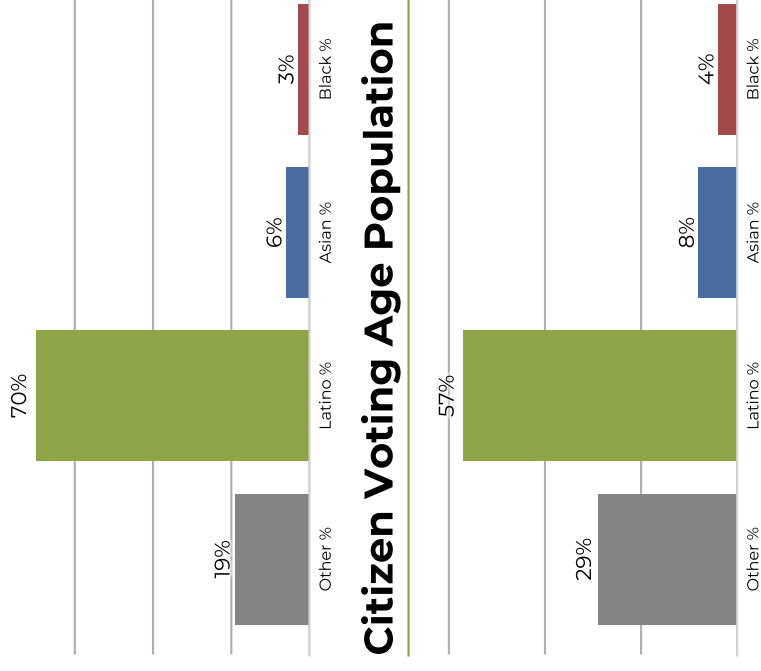


Population	Deviation	Deviation %	Other	Other %	Latino	Latino %	Asian	Asian %	Black	Black %
45,366	160	0.4%	20,288	44.7%	20,166	44.5%	2,656	5.9%	2,256	5.0%
Total CVAP	Other CVAP	Other CVAP %	Latino CVAP	Latino CVAP %	Asian CVAP	Asian CVAP %	Black CVAP	Black CVAP %		
34,329	16,990	49.5%	12,291	35.8%	2,721	7.9%	2,327	6.8%		

District 6



2020 Census



Population	Deviation	Deviation %	Other	Other %	Latino	Latino %	Asian	Asian %	Black	Black %
43,948	-1,258	-2.8%	8,734	19.9%	30,889	70.3%	2,655	6.0%	1,670	3.8%
Total CVAP	Other CVAP	Other CVAP %	Latino CVAP	Latino CVAP %	Asian CVAP	Asian CVAP %	Black CVAP	Black CVAP %		
28,124	8,267	29.4%	16,093	57.2%	2,402	8.5%	1,362	4.8%		

