

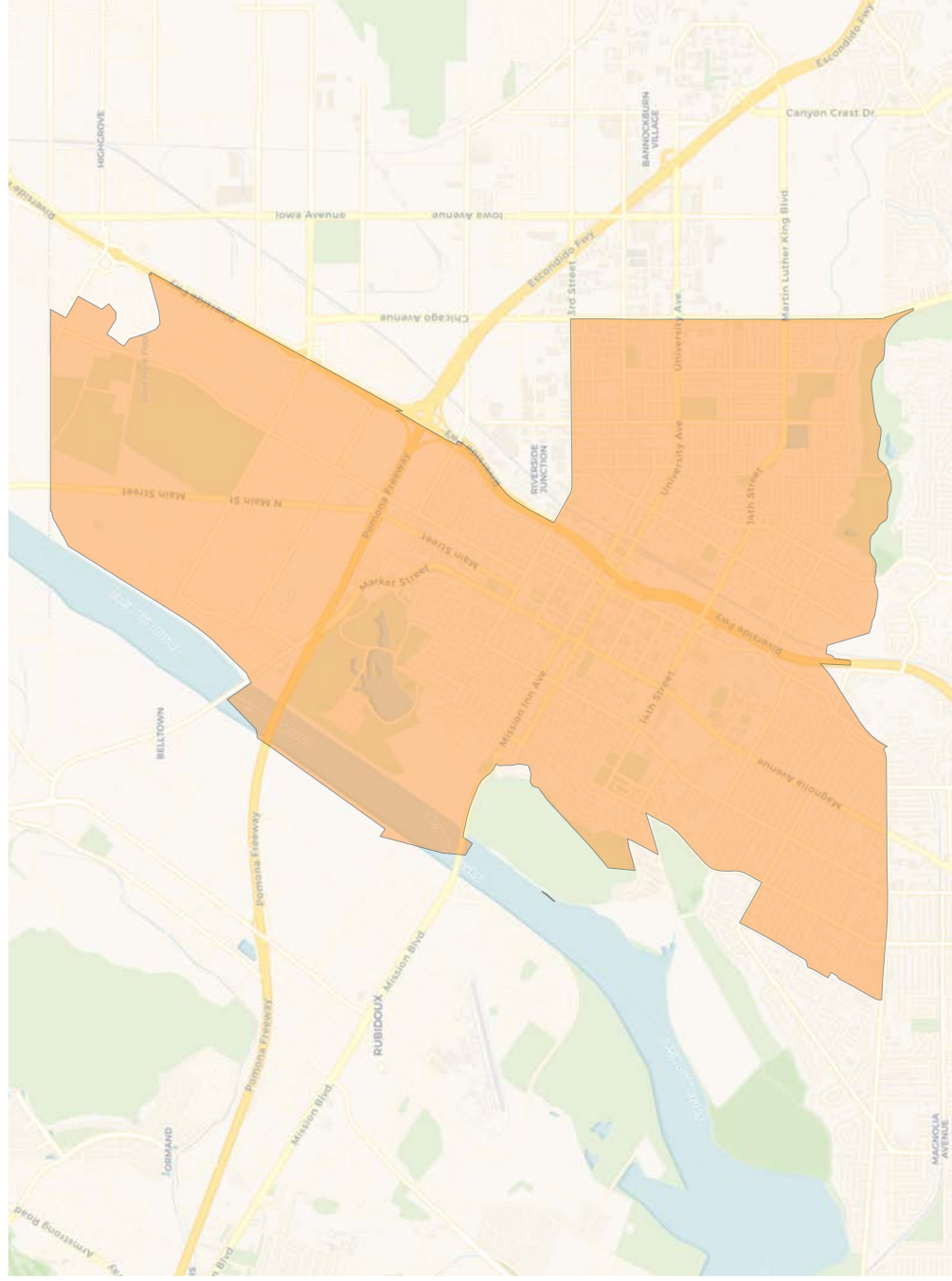
2020 Census

	1	2	3	4	5	6	7
Population	45,282	43,715	43,185	45,870	46,841	46,185	45,367
Deviation	76	-1,491	-2,021	664	1,635	979	161
Deviation %	0.2%	-3.3%	-4.5%	1.5%	3.6%	2.2%	0.4%
Other	11,992	17,789	17,024	22,679	12,080	9,775	10,350
Other %	26.5%	40.7%	39.4%	49.4%	25.8%	21.2%	22.8%
Latino	28,449	15,739	22,778	14,500	30,258	31,771	29,662
Latino %	62.8%	36.0%	52.7%	31.6%	64.6%	68.8%	65.4%
Asian	1,596	6,207	1,222	5,465	2,143	2,600	3,224
Asian %	3.5%	14.2%	2.8%	11.9%	4.6%	5.6%	7.1%
Black	3,245	3,980	2,161	3,226	2,360	2,039	2,131
Black %	7.2%	9.1%	5.0%	7.0%	5.0%	4.4%	4.7%

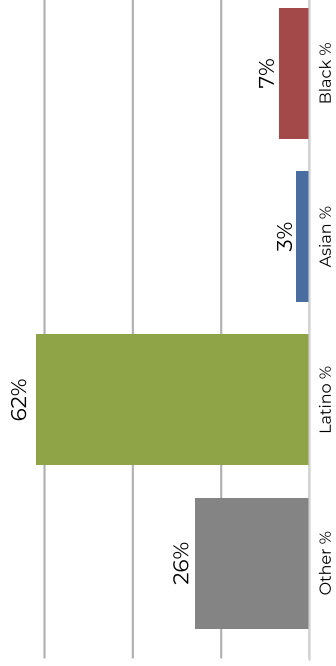
Citizen Voting Age Population (CVAP)

	1	2	3	4	5	6	7
Total CVAP	27,956	32,541	30,111	34,595	32,478	28,214	30,829
Other CVAP	9,269	13,912	14,579	18,352	12,217	8,039	9,593
Other CVAP %	33.2%	42.8%	48.4%	53.0%	37.6%	28.5%	31.1%
Latino CVAP	15,388	11,694	12,856	9,020	16,949	16,445	16,813
Latino CVAP %	55.0%	35.9%	42.7%	26.1%	52.2%	58.3%	54.5%
Asian CVAP	1,069	4,519	845	4,434	1,254	1,927	2,822
Asian CVAP %	3.8%	13.9%	2.8%	12.8%	3.9%	6.8%	9.2%
Black CVAP	2,230	2,416	1,831	2,789	2,058	1,803	1,601
Black CVAP %	8.0%	7.4%	6.1%	8.1%	6.3%	6.4%	5.2%

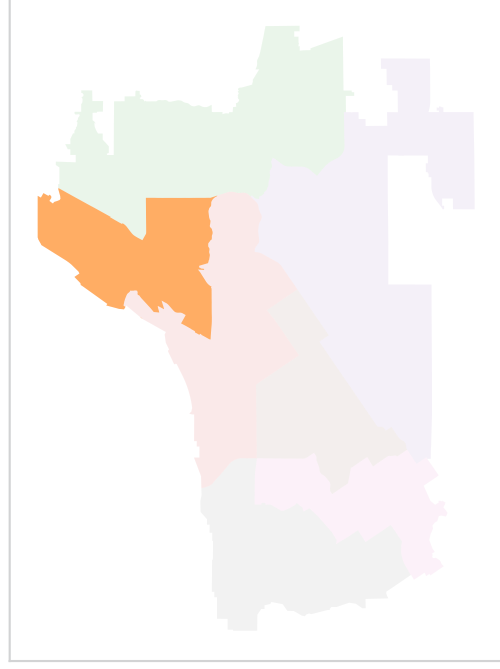
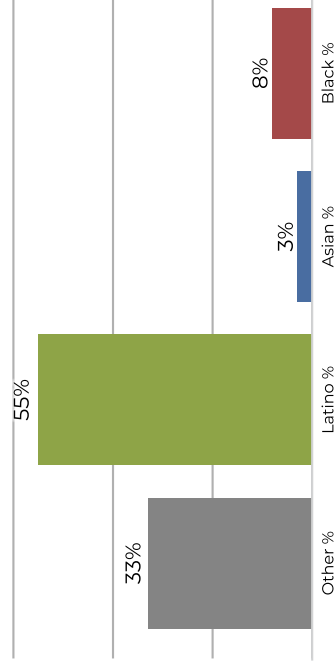
District 1



2020 Census

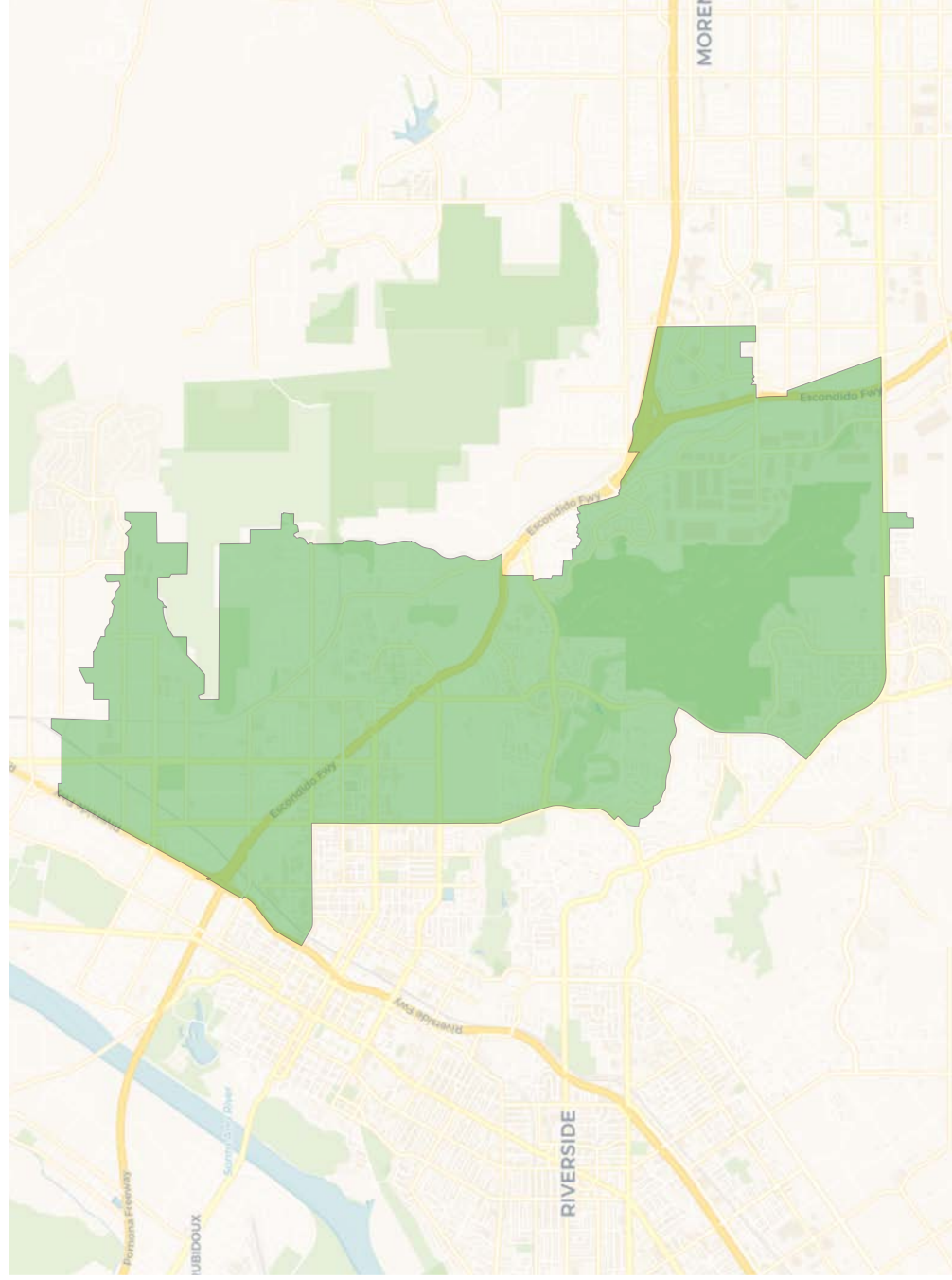


Citizen Voting Age Population

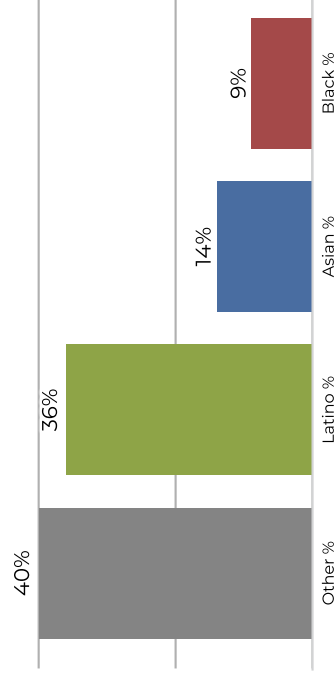


Population	Deviation	Deviation %	Other	Other %	Latino	Latino %	Latino CVAP	Latino CVAP %	Asian	Asian %	Asian CVAP	Asian CVAP %	Black	Black %	Black CVAP	Black CVAP %
45,282	76	0.2%	11,992	26.5%	28,449	62.8%	1,596	3.5%	3,245	7.2%						
Total CVAP	9,269	33.2%	15,388	26.5%	28,449	62.8%	1,069	3.8%	2,230	8.0%						

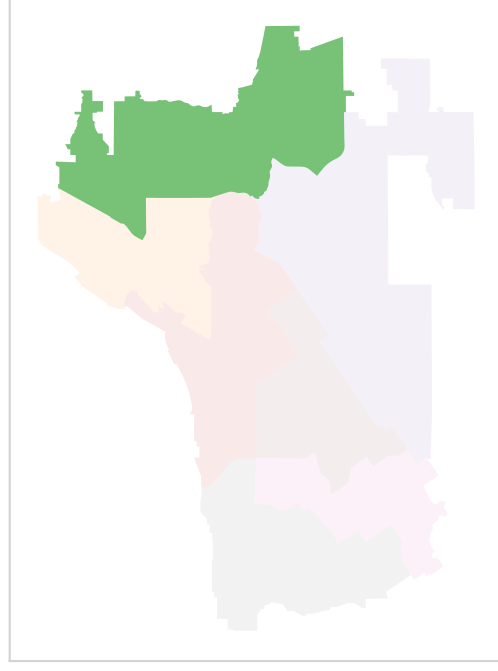
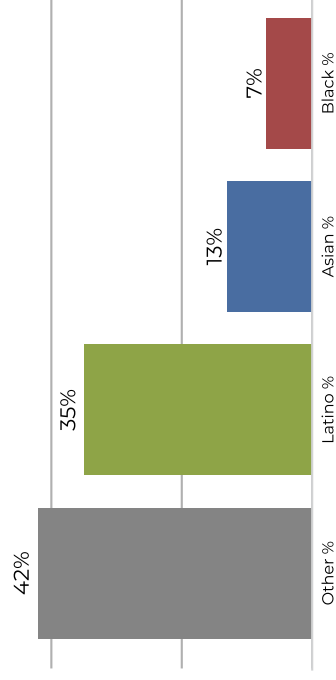
District 2



2020 Census

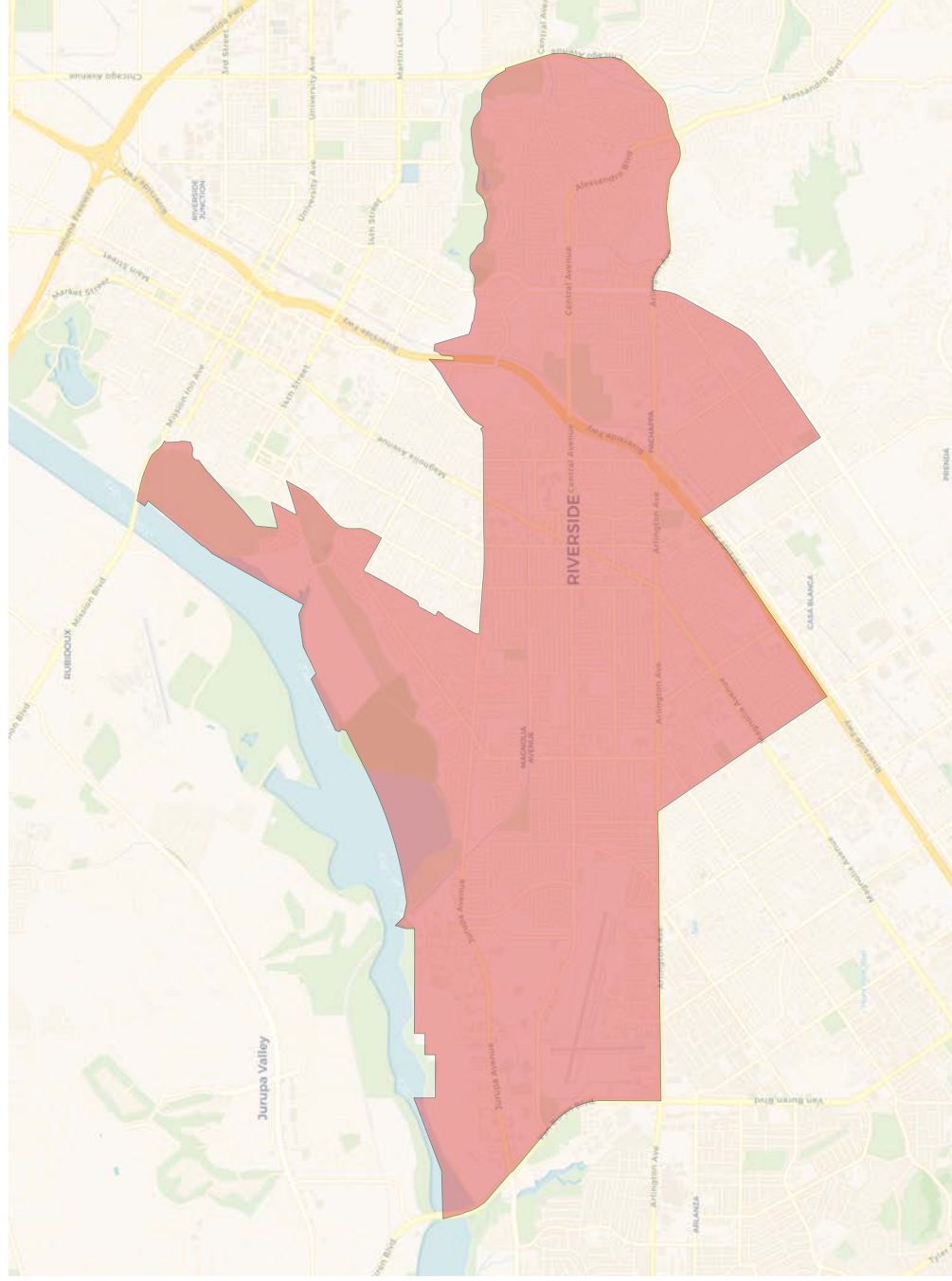


Citizen Voting Age Population

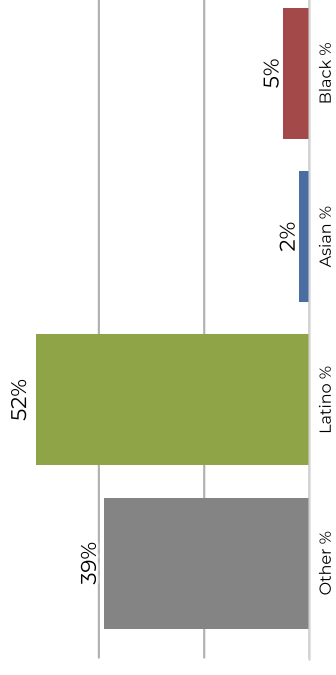


Population	Deviation	Deviation %	Other	Other %	Latino	Latino %	Asian	Asian %	Black	Black %
43,715	-1,491	-3.3%	17,789	40.7%	15,739	36.0%	6,207	14.2%	3,980	9.1%
Total CVAP	Other CVAP	Other CVAP %	Latino CVAP	Latino CVAP %	Asian CVAP	Asian CVAP %	Black CVAP	Black CVAP %		
32,541	13,912	42.8%	11,694	35.9%	4,519	13.9%	2,416	7.4%		

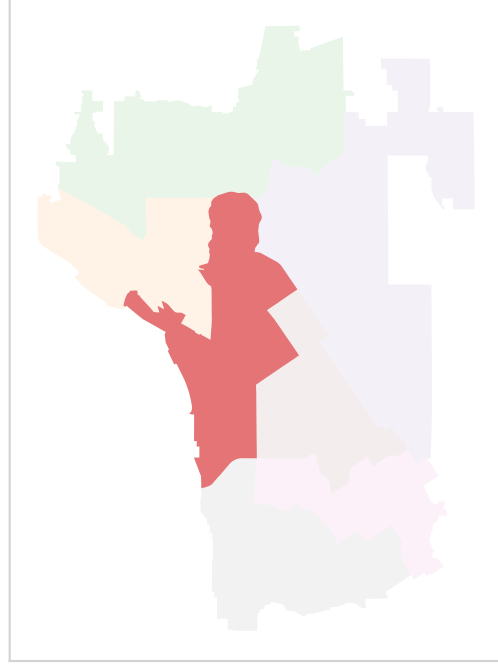
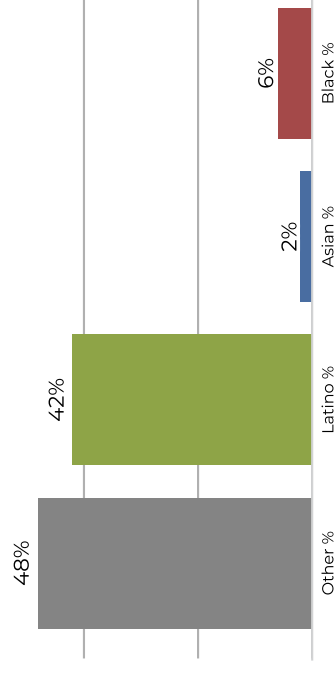
District 3



2020 Census

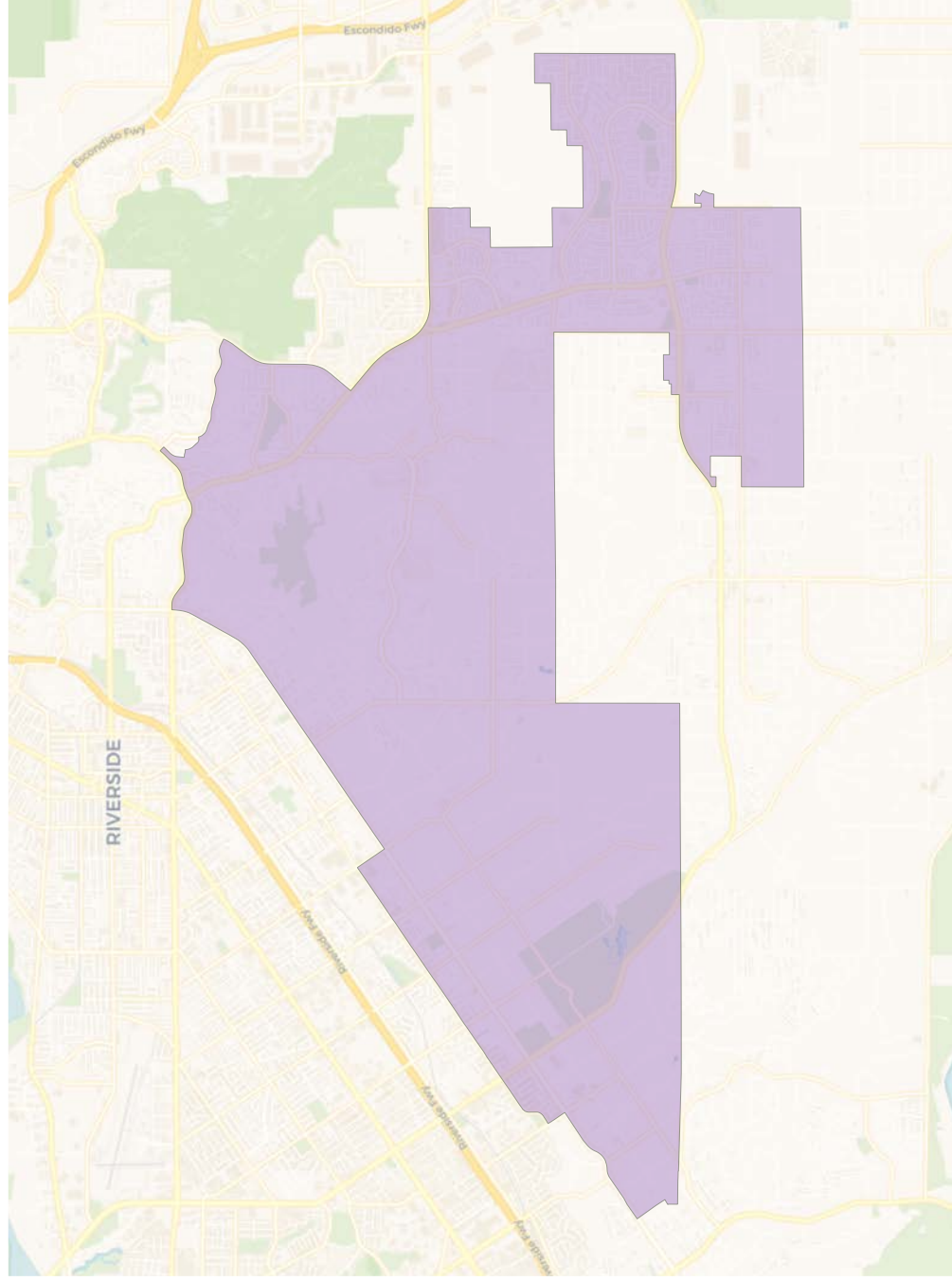


Citizen Voting Age Population

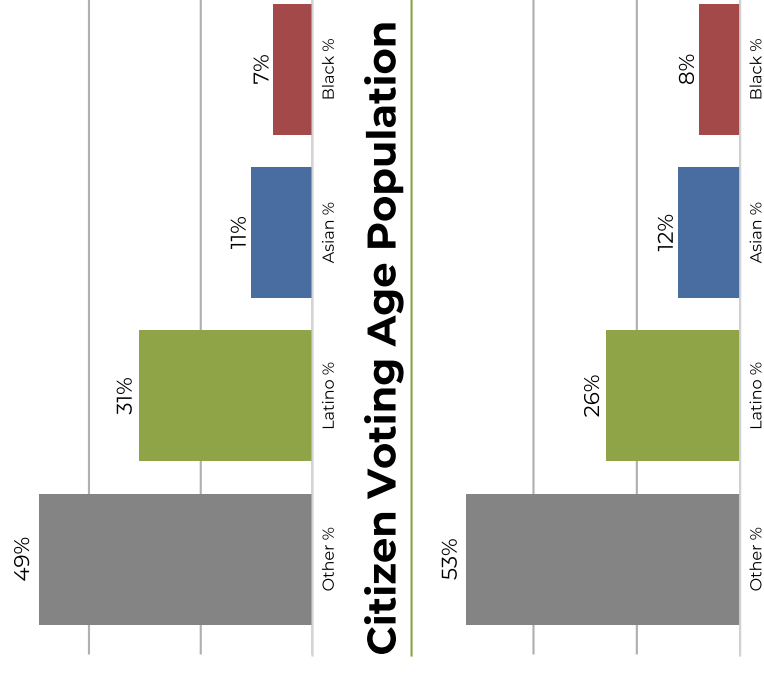


Population	Deviation	Deviation %	Other	Other %	Latino	Latino %	Asian	Asian %	Black	Black %
43,185	-2,021	-4.5%	17,024	39.4%	22,778	52.7%	1,222	2.8%	2,161	5.0%
Total CVAP	Other CVAP	Other CVAP %	Latino CVAP	Latino CVAP %	Asian CVAP	Asian CVAP %	Black CVAP	Black CVAP %		
30,111	14,579	48.4%	12,856	42.7%	845	2.8%	1,831	6.1%		

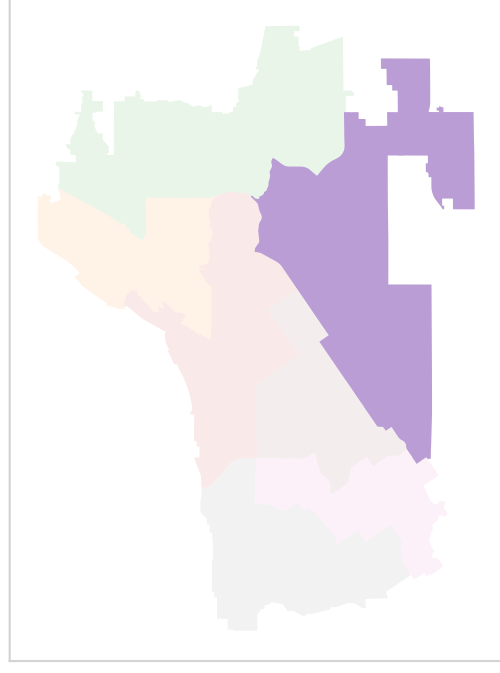
District 4



2020 Census

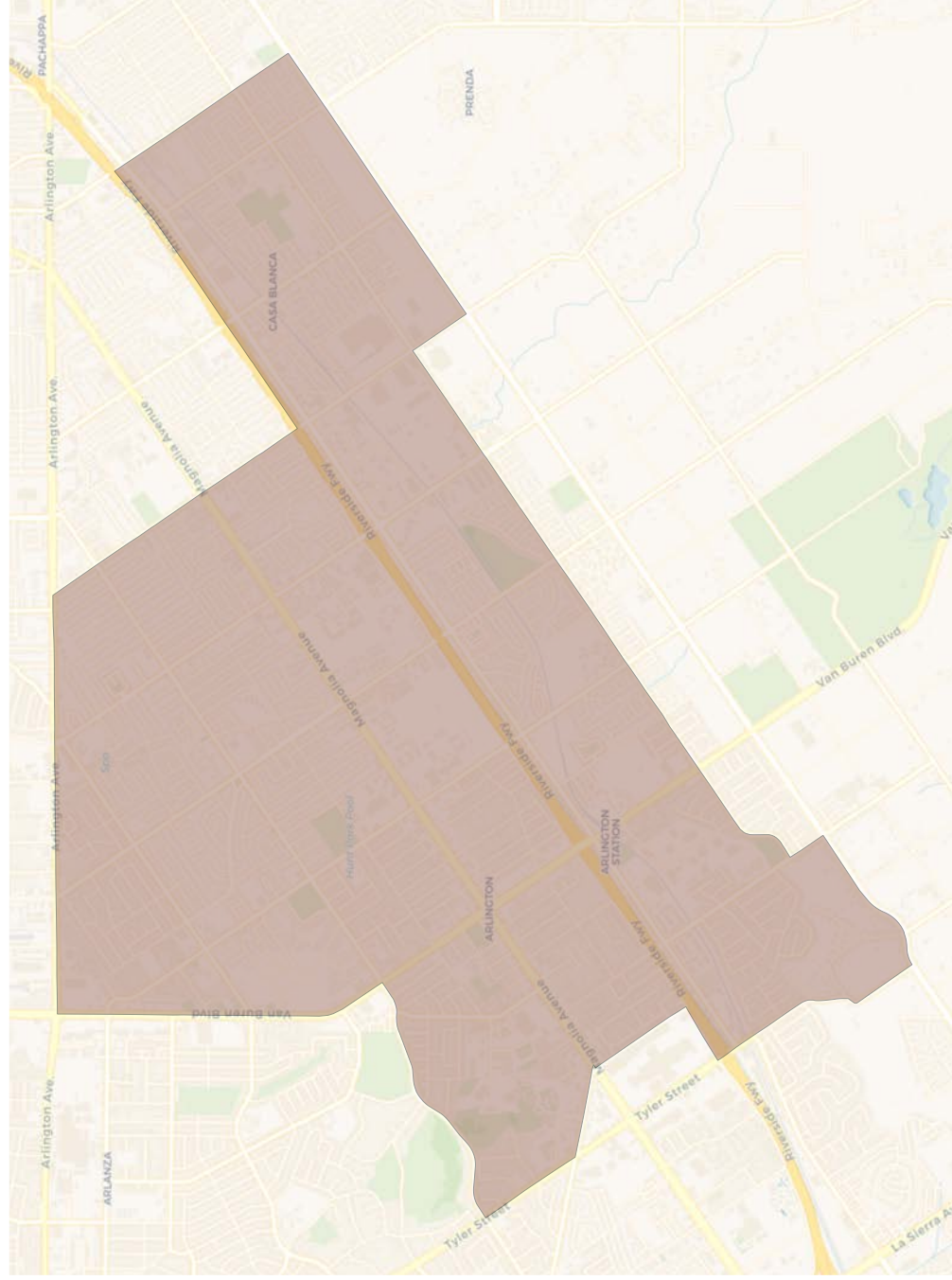


Citizen Voting Age Population

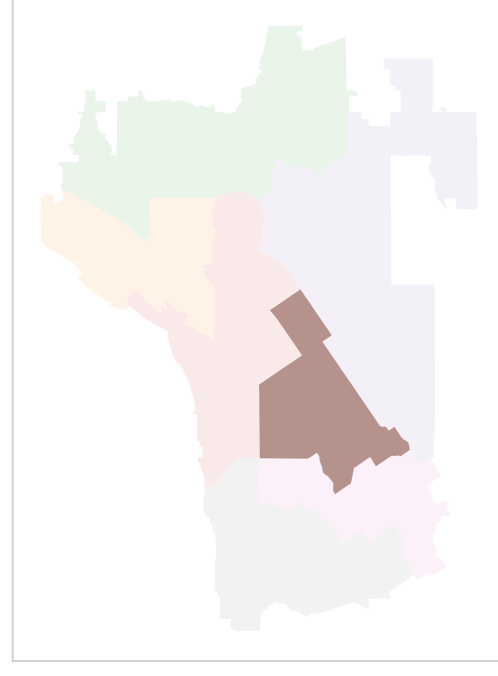
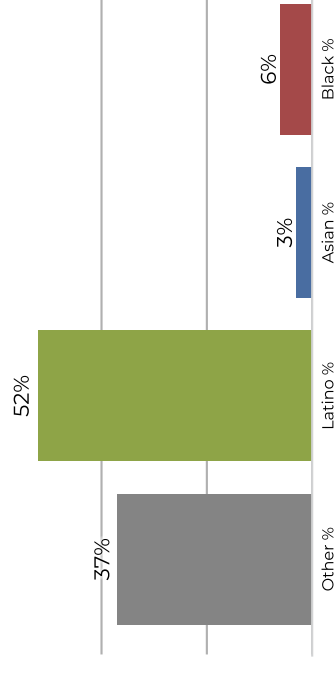
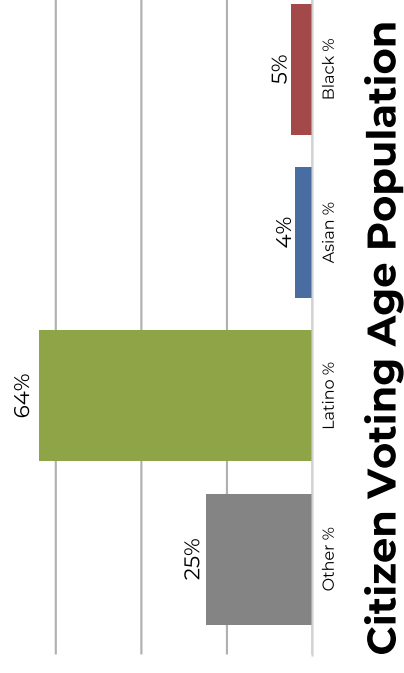


Population	Deviation	Deviation %	Other	Other %	Latino	Latino %	Asian	Asian %	Black	Black %
45,870	664	1.5%	22,679	49.4%	14,500	31.6%	5,465	11.9%	3,226	7.0%
Total CVAP	Other CVAP	Other CVAP %	Latino CVAP	Latino CVAP %	Asian CVAP	Asian CVAP %	Black CVAP	Black CVAP %	Black CVAP %	Black CVAP %
34,595	18,352	53.0%	9,020	26.1%	4,434	12.8%	2,789	8.1%	8.1%	8.1%

District 5

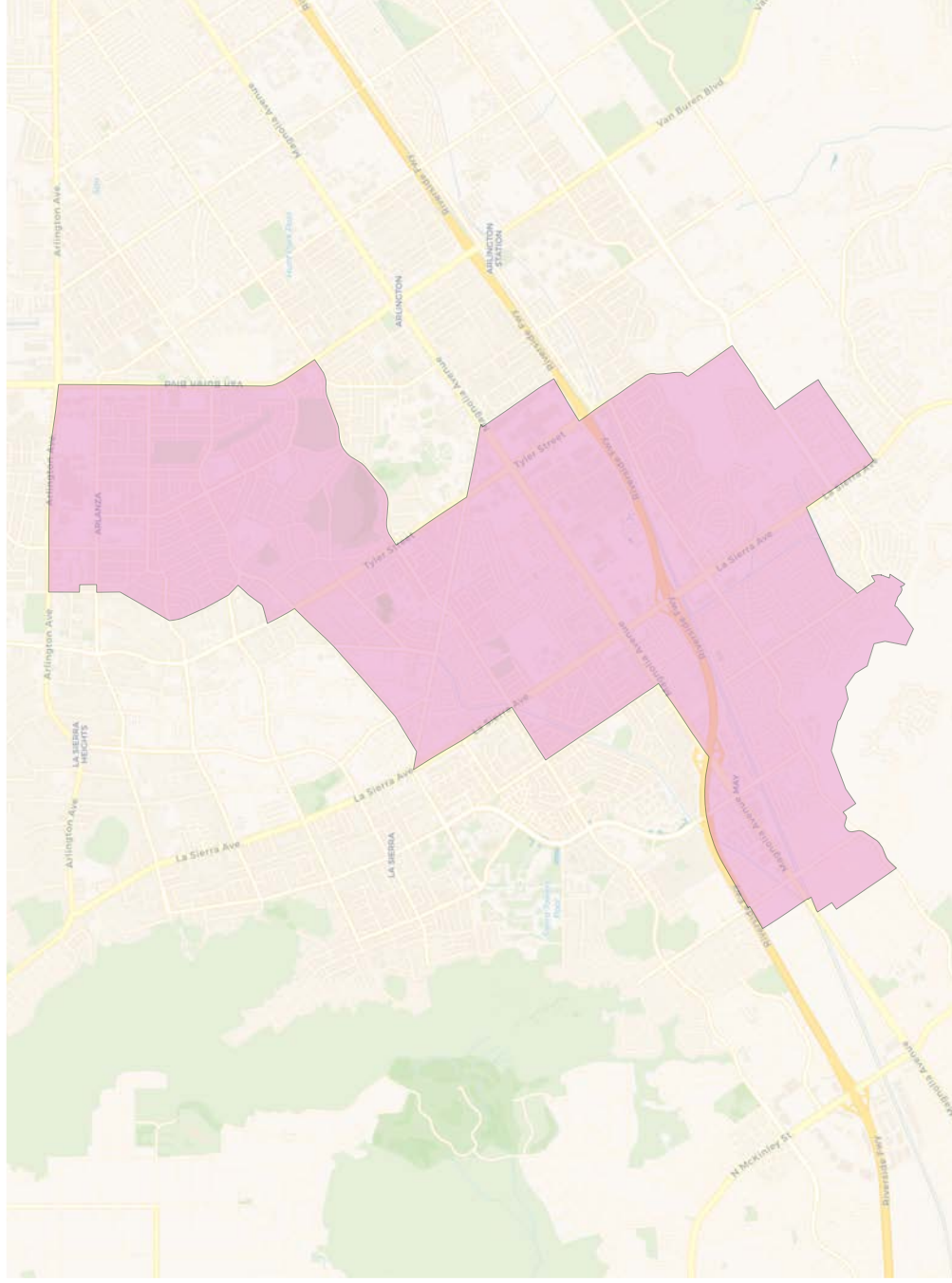


2020 Census

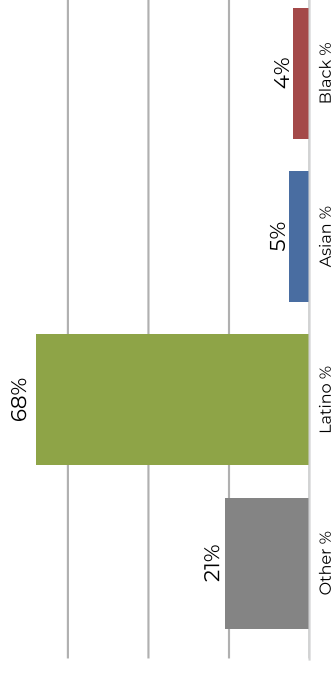


Population	Deviation	Deviation %	Other	Other %	Latino	Latino %	Asian	Asian %	Black	Black %
46,841	1,635	3.6%	12,080	25.8%	30,258	64.6%	2,143	4.6%	2,360	5.0%
Total CVAP	Other CVAP	Other CVAP %	Latino CVAP	Latino CVAP %	Asian CVAP	Asian CVAP %	Black CVAP	Black CVAP %		
32,478	12,217	37.6%	16,949	52.2%	1,254	3.9%	2,058	6.3%		

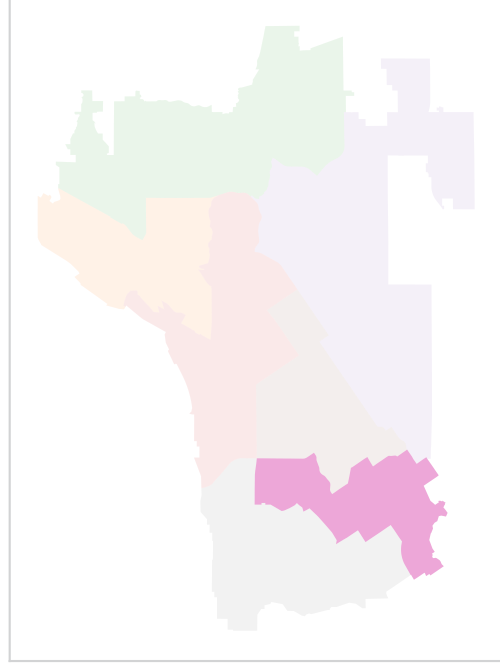
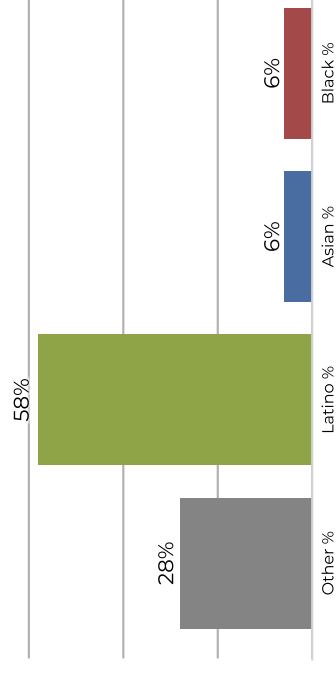
District 6



2020 Census

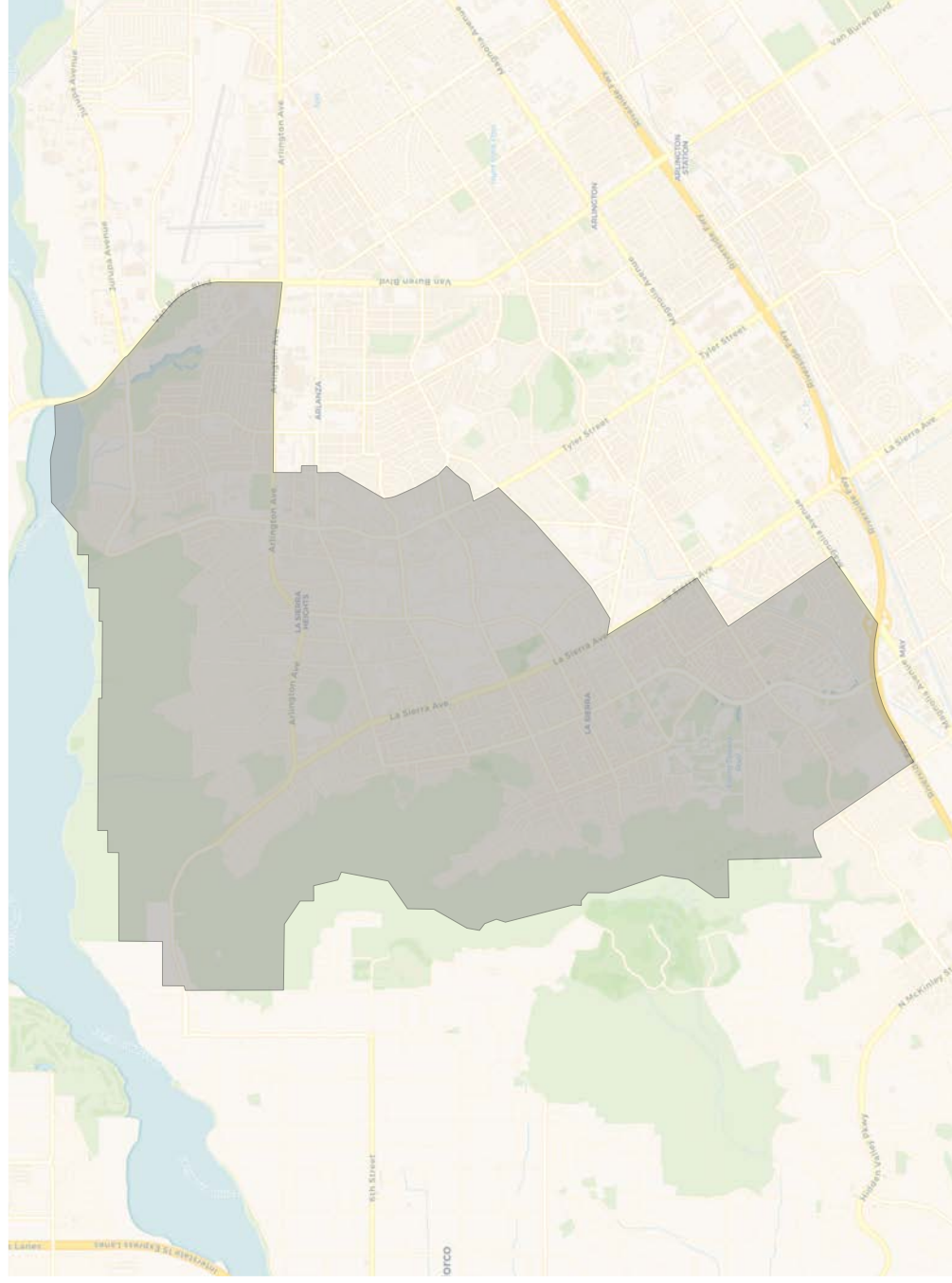


Citizen Voting Age Population

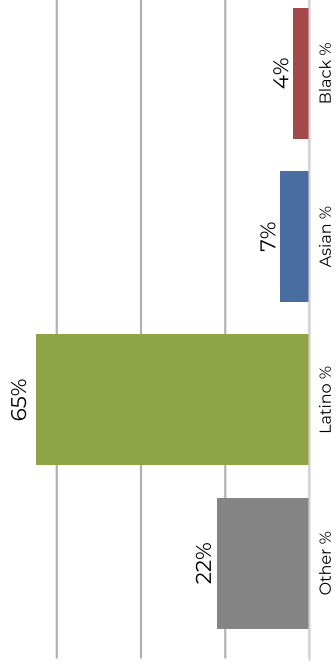


Population	Deviation	Deviation %	Other	Other %	Latino	Latino %	Latino CVAP	Latino CVAP %	Asian	Asian %	Asian CVAP	Asian CVAP %	Black	Black %	Black CVAP	Black CVAP %
46,185	979	2.2%	9,775	21.2%	31,771	68.8%	2,600	5.6%	2,039	4.4%	1,803	6.4%	2,039	4.4%	1,803	6.4%
Total CVAP	8,039	28.5%	16,445	58.3%	1,927	6.8%	1,803	6.4%	1,803	6.4%	1,803	6.4%	1,803	6.4%	1,803	6.4%

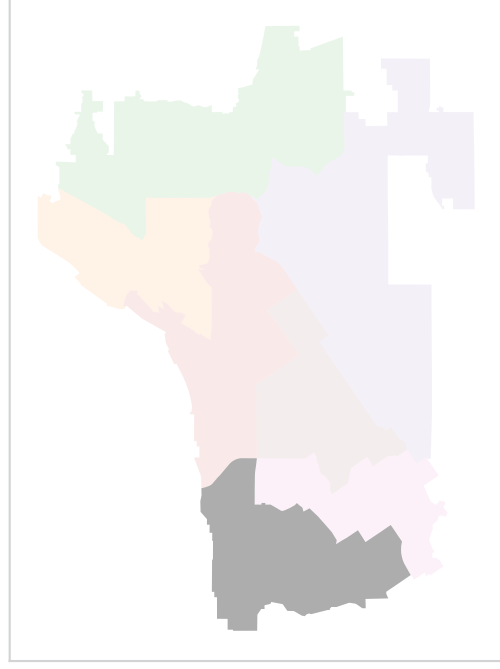
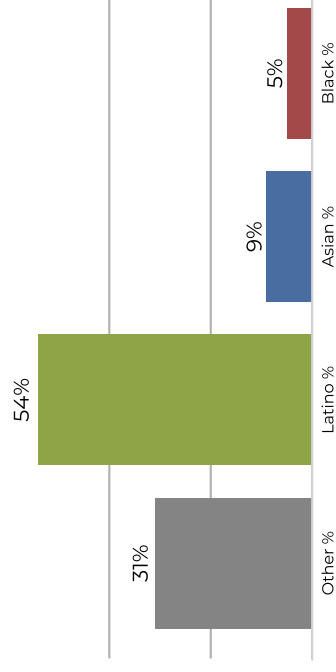
District 7



2020 Census



Citizen Voting Age Population



Population	Deviation	Deviation %	Other	Other %	Latino	Latino %	Asian	Asian %	Black	Black %
45,367	161	0.4%	10,350	22.8%	29,662	65.4%	3,224	7.1%	2,131	4.7%
Total CVAP	Other CVAP	Other CVAP %	Latino CVAP	Latino CVAP %	Asian CVAP	Asian CVAP %	Black CVAP	Black CVAP %	Black CVAP %	Black CVAP %
30,829	9,593	31.1%	16,813	54.5%	2,822	9.2%	1,601	5.2%	5.2%	5.2%