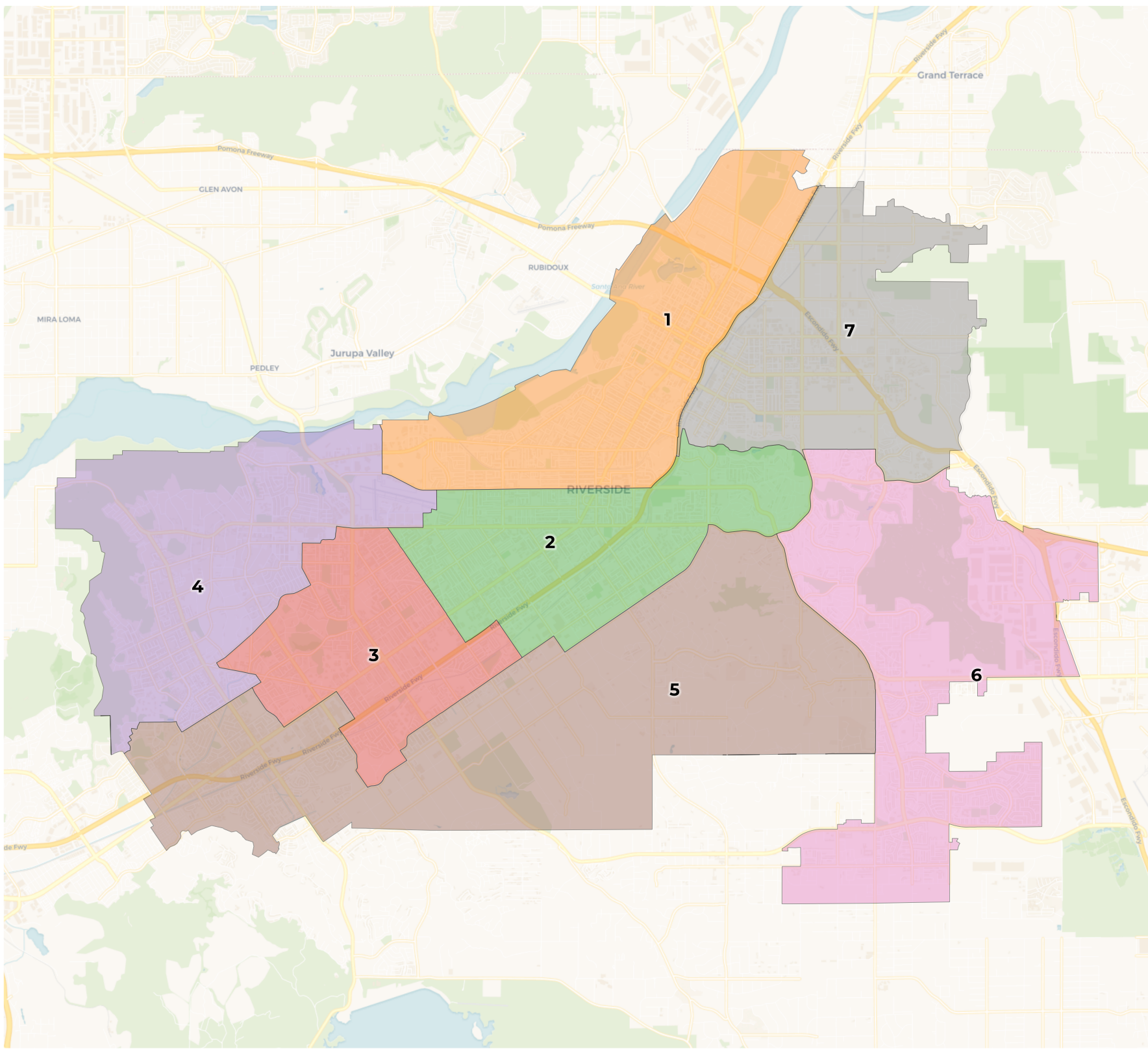


# REDISTRICTING PARTNERS

## City of Riverside

Visualization of Downtown and  
Eastside split

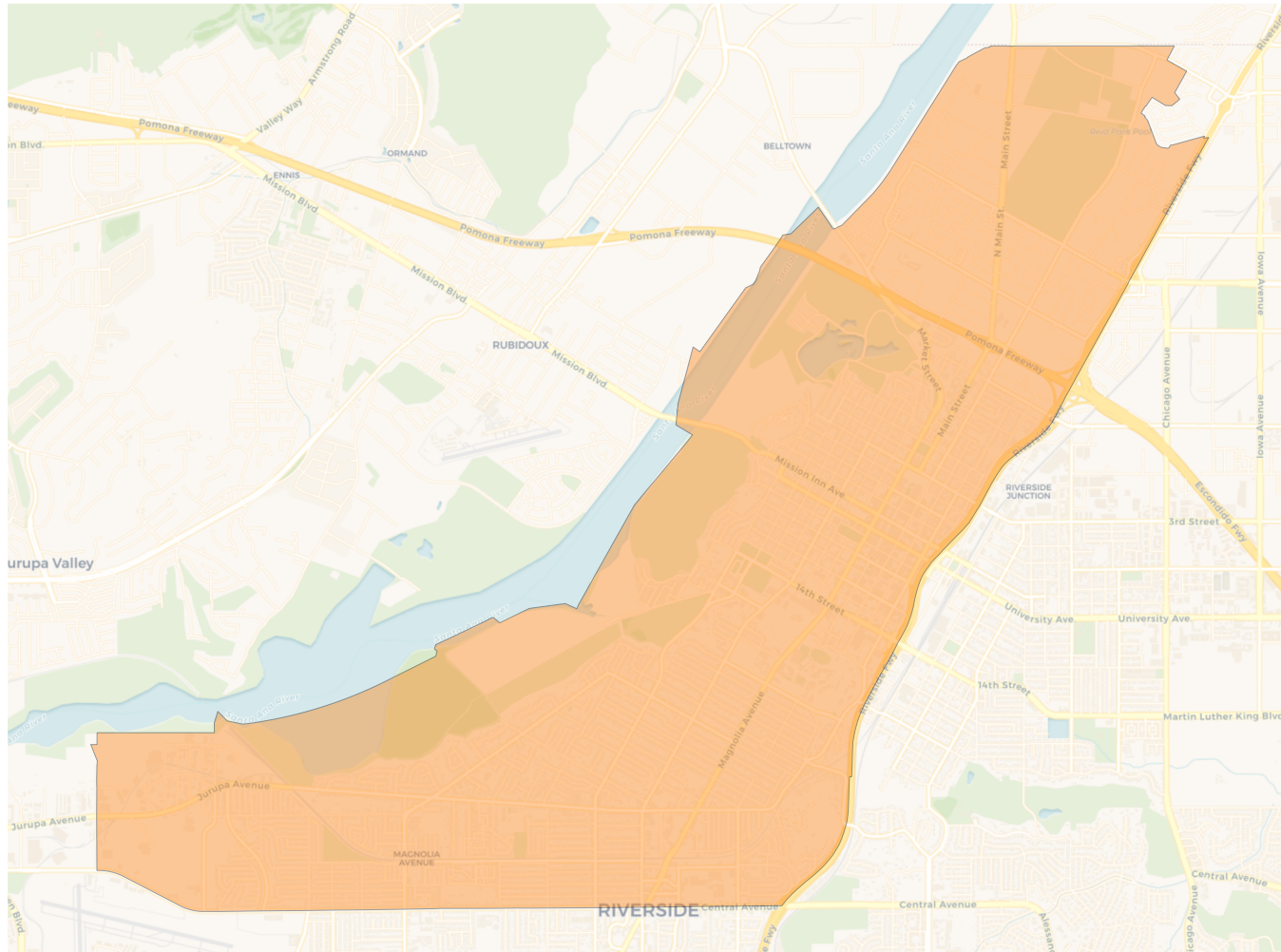
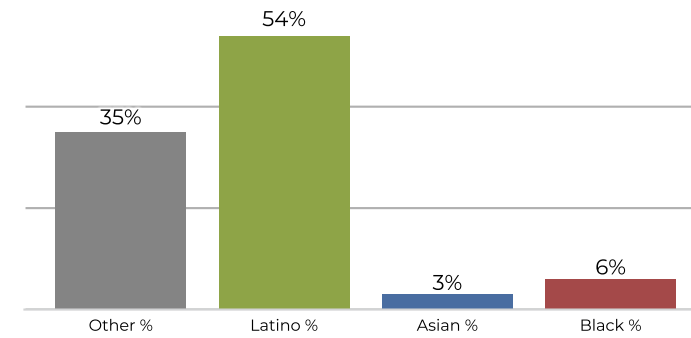
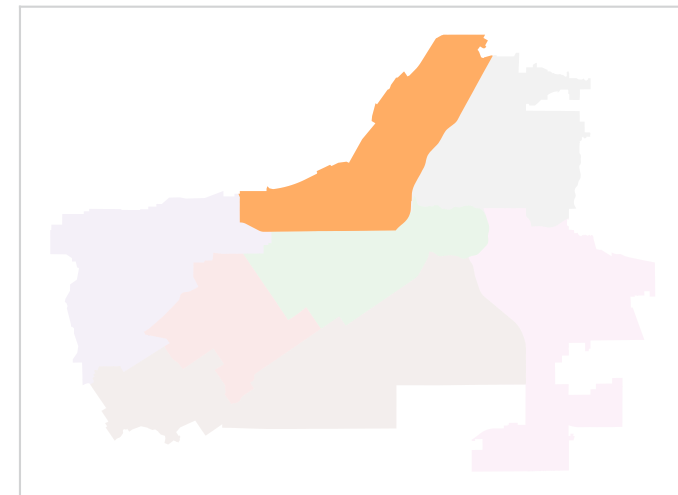
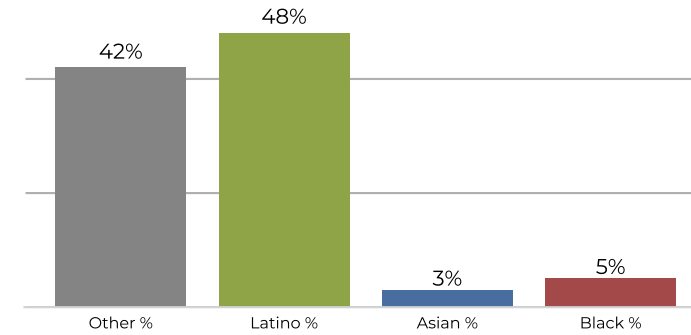


**2020 Census**

	1	2	3	4	5	6	7
Population	43,835	45,295	45,811	44,689	43,742	47,129	45,944
Deviation	-1,371	89	605	-517	-1,464	1,923	738
Deviation %	-3.0%	0.2%	1.3%	-1.1%	-3.2%	4.3%	1.6%
Other	15,537	16,284	9,609	8,994	16,653	22,550	12,062
Other %	35.4%	36.0%	21.0%	20.1%	38.1%	47.8%	26.3%
Latino	23,962	25,427	32,143	31,341	20,795	14,711	24,778
Latino %	54.7%	56.1%	70.2%	70.1%	47.5%	31.2%	53.9%
Asian	1,672	1,412	2,026	2,604	3,789	5,974	4,980
Asian %	3.8%	3.1%	4.4%	5.8%	8.7%	12.7%	10.8%
Black	2,664	2,172	2,033	1,750	2,505	3,894	4,124
Black %	6.1%	4.8%	4.4%	3.9%	5.7%	8.3%	9.0%

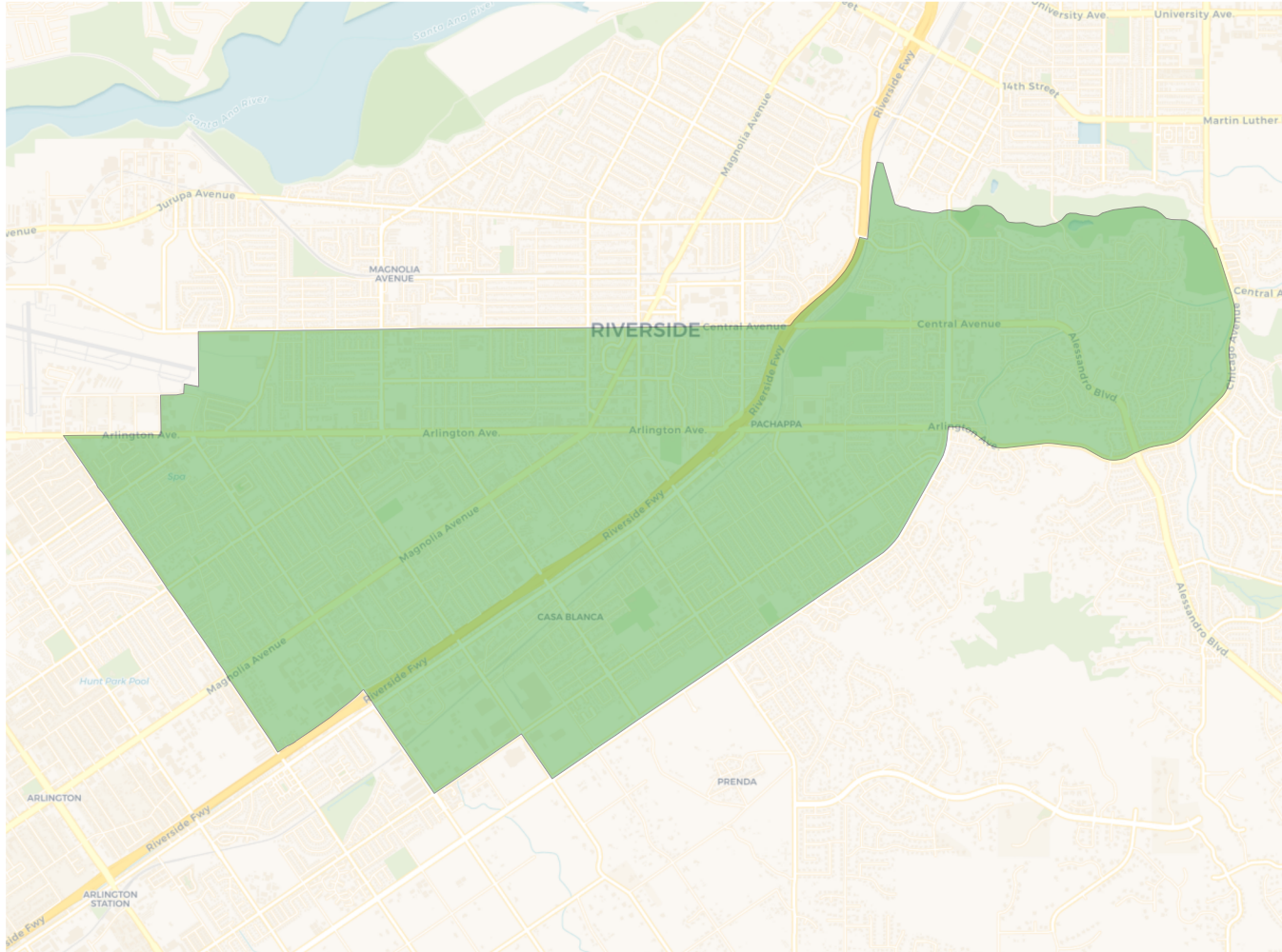
**Citizen Voting Age Population (CVAP)**

	1	2	3	4	5	6	7
Total CVAP	31,448	32,009	27,412	29,019	32,121	34,108	30,607
Other CVAP	13,363	14,766	8,459	7,929	14,114	18,570	8,760
Other CVAP %	42.5%	46.1%	30.9%	27.3%	43.9%	54.4%	28.6%
Latino CVAP	15,170	14,106	16,273	17,640	11,879	9,156	14,941
Latino CVAP %	48.2%	44.1%	59.4%	60.8%	37.0%	26.8%	48.8%
Asian CVAP	1,222	908	1,356	2,069	3,787	3,676	3,852
Asian CVAP %	3.9%	2.8%	4.9%	7.1%	11.8%	10.8%	12.6%
Black CVAP	1,693	2,229	1,324	1,381	2,341	2,706	3,054
Black CVAP %	5.4%	7.0%	4.8%	4.8%	7.3%	7.9%	10.0%

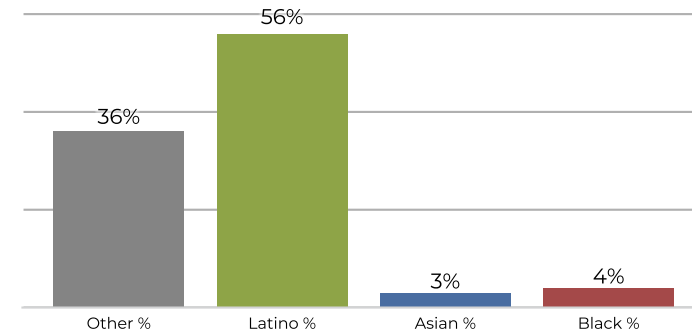
**District 1**

**2020 Census**

**Citizen Voting Age Population**


Population	Deviation	Deviation %	Other	Other %	Latino	Latino %	Asian	Asian %	Black	Black %
43,835	-1,371	-3.0%	15,537	35.4%	23,962	54.7%	1,672	3.8%	2,664	6.1%
Total CVAP	Other CVAP	Other CVAP %	Latino CVAP	Latino CVAP %	Asian CVAP	Asian CVAP %	Black CVAP	Black CVAP %		
31,448	13,363	42.5%	15,170	48.2%	1,222	3.9%	1,693	5.4%		

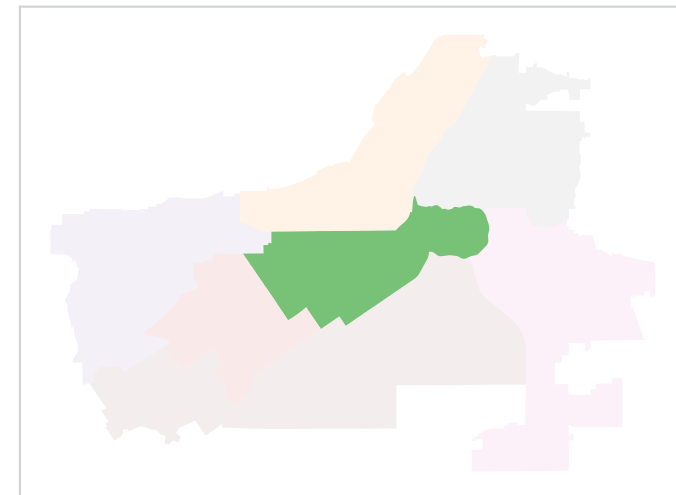
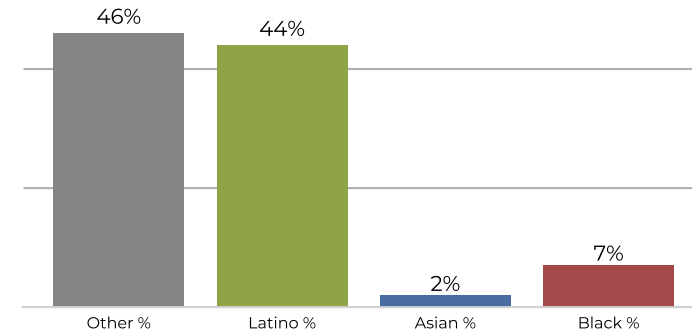
**District 2**



**2020 Census**

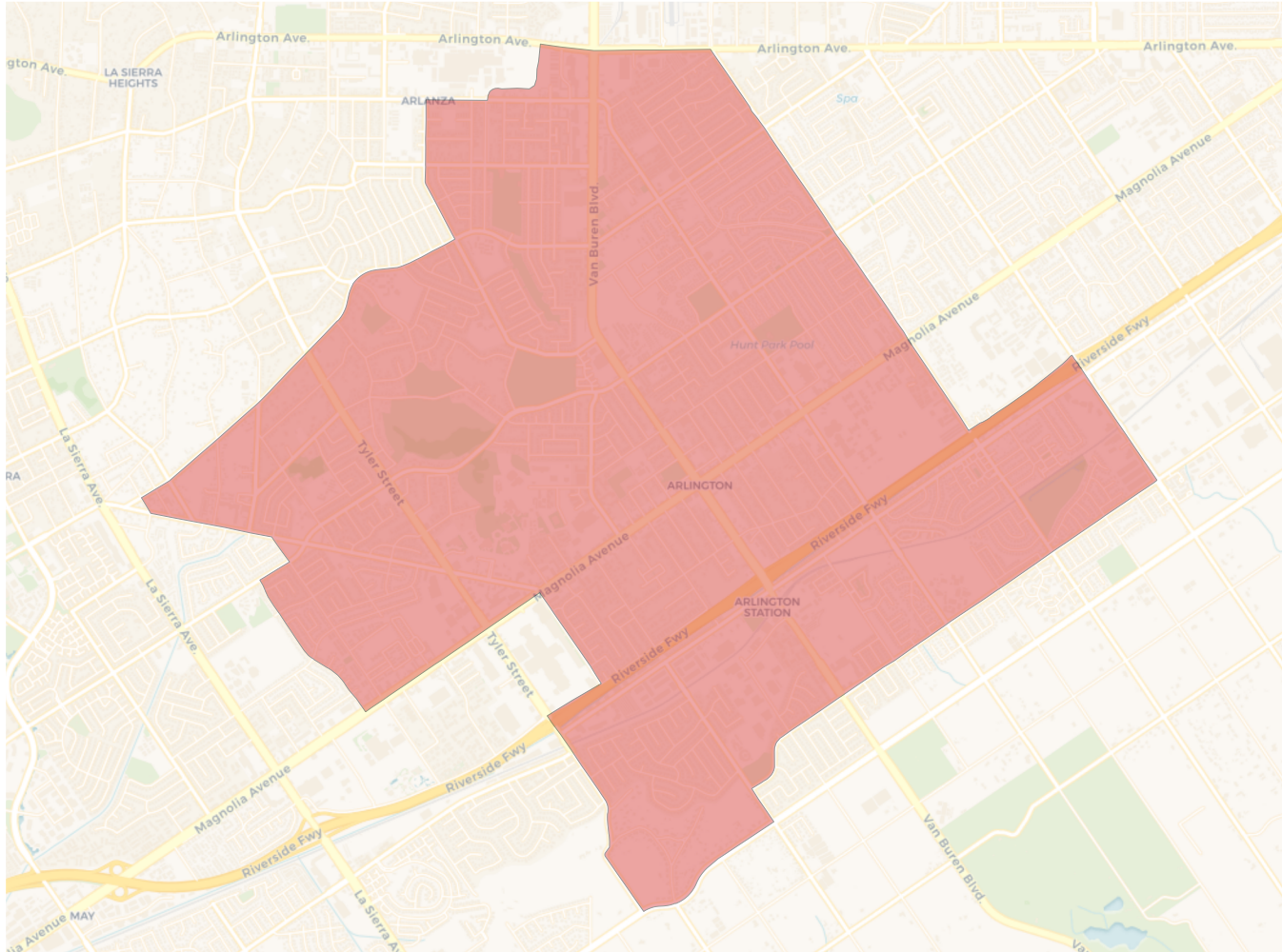


**Citizen Voting Age Population**

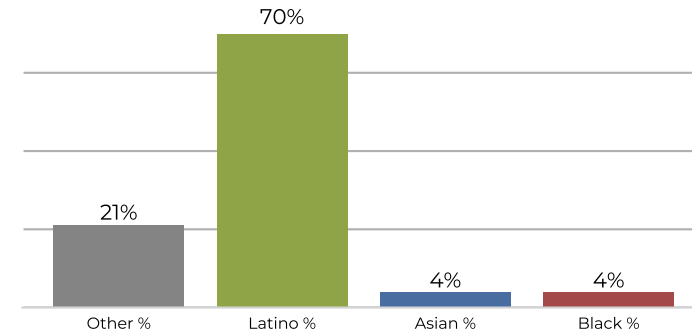


Population	Deviation	Deviation %	Other	Other %	Latino	Latino %	Asian	Asian %	Black	Black %
45,295	89	0.2%	16,284	36.0%	25,427	56.1%	1,412	3.1%	2,172	4.8%
Total CVAP	Other CVAP	Other CVAP %	Latino CVAP	Latino CVAP %	Asian CVAP	Asian CVAP %	Black CVAP	Black CVAP %		
32,009	14,766	46.1%	14,106	44.1%	908	2.8%	2,229	7.0%		

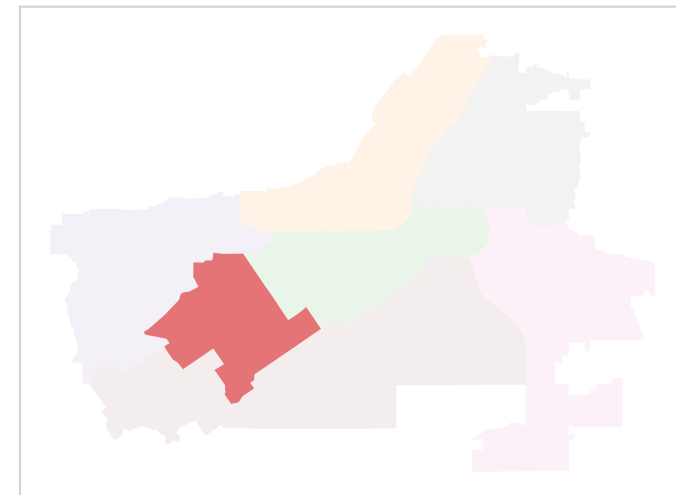
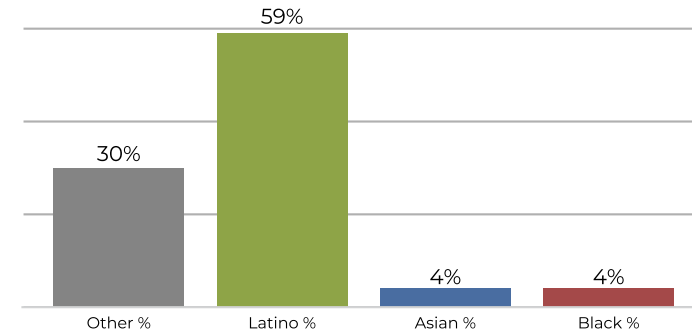
**District 3**



**2020 Census**

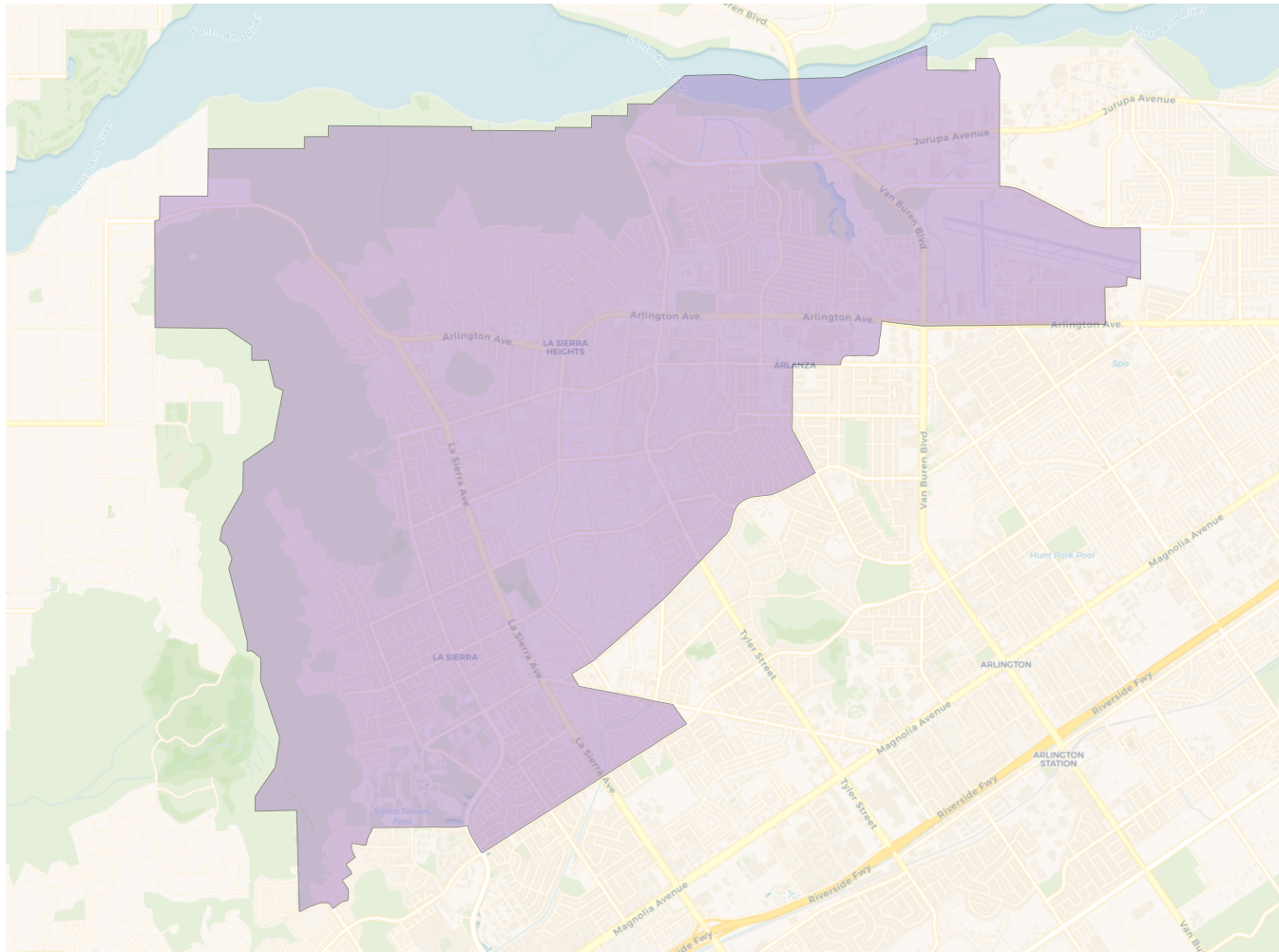


**Citizen Voting Age Population**

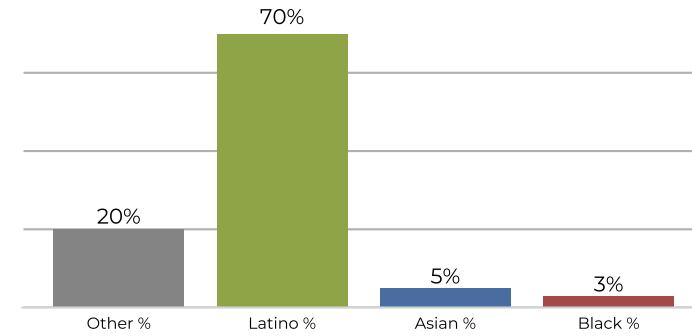


Population	Deviation	Deviation %	Other	Other %	Latino	Latino %	Asian	Asian %	Black	Black %
45,811	605	1.3%	9,609	21.0%	32,143	70.2%	2,026	4.4%	2,033	4.4%
Total CVAP	Other CVAP	Other CVAP %	Latino CVAP	Latino CVAP %	Asian CVAP	Asian CVAP %	Black CVAP	Black CVAP %		
27,412	8,459	30.9%	16,273	59.4%	1,356	4.9%	1,324	4.8%		

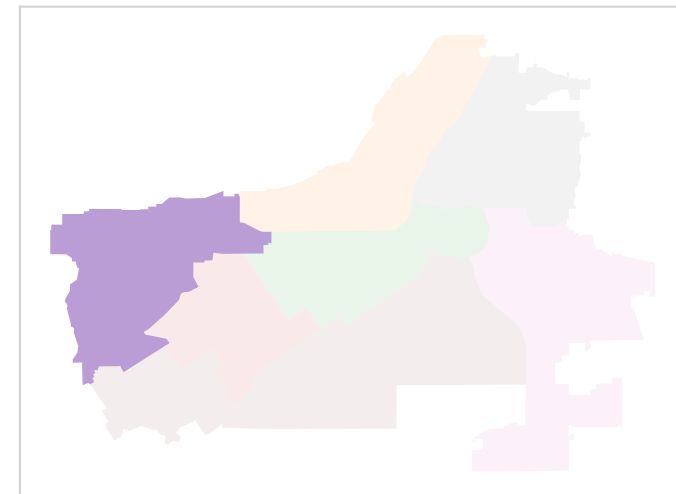
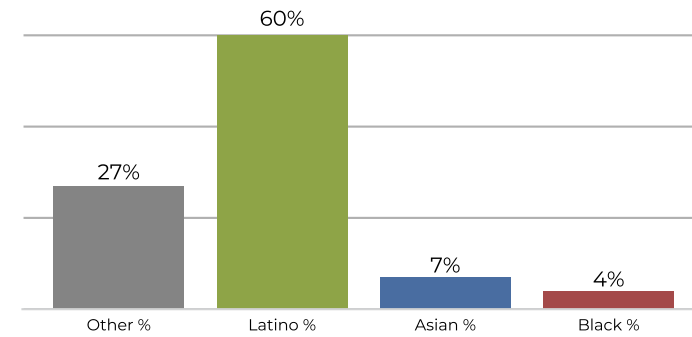
**District 4**



**2020 Census**

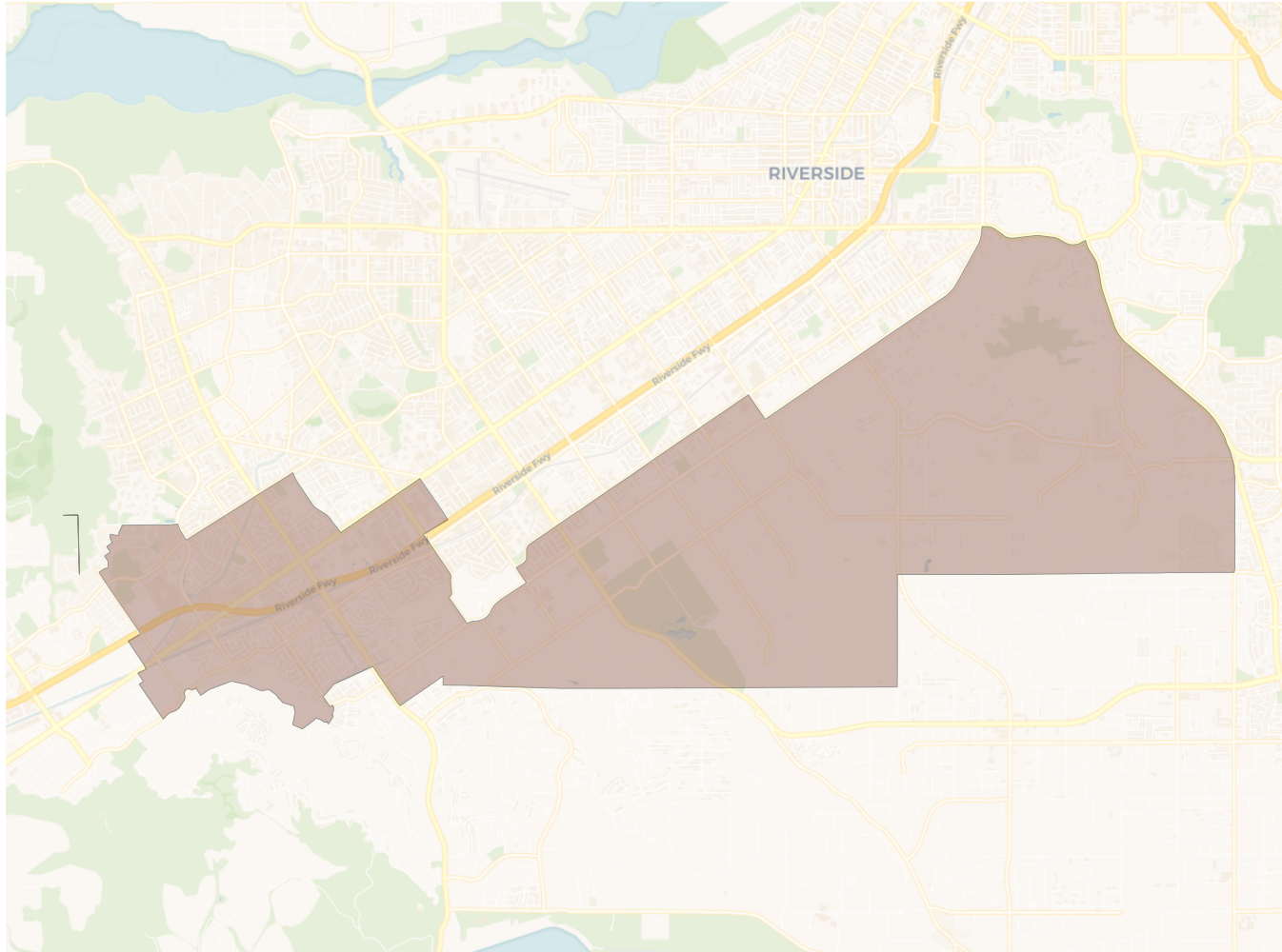


**Citizen Voting Age Population**

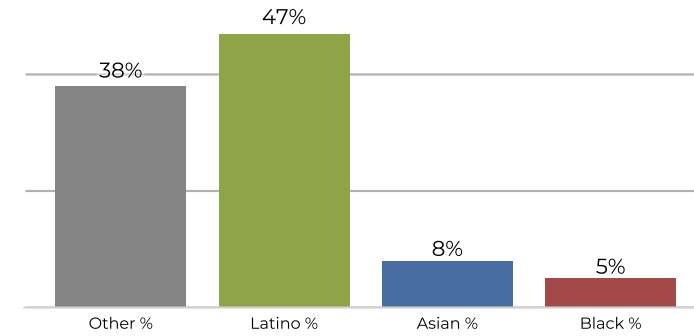


Population	Deviation	Deviation %	Other	Other %	Latino	Latino %	Asian	Asian %	Black	Black %
44,689	-517	-1.1%	8,994	20.1%	31,341	70.1%	2,604	5.8%	1,750	3.9%
Total CVAP	Other CVAP	Other CVAP %	Latino CVAP	Latino CVAP %	Asian CVAP	Asian CVAP %	Black CVAP	Black CVAP %		
29,019	7,929	27.3%	17,640	60.8%	2,069	7.1%	1,381	4.8%		

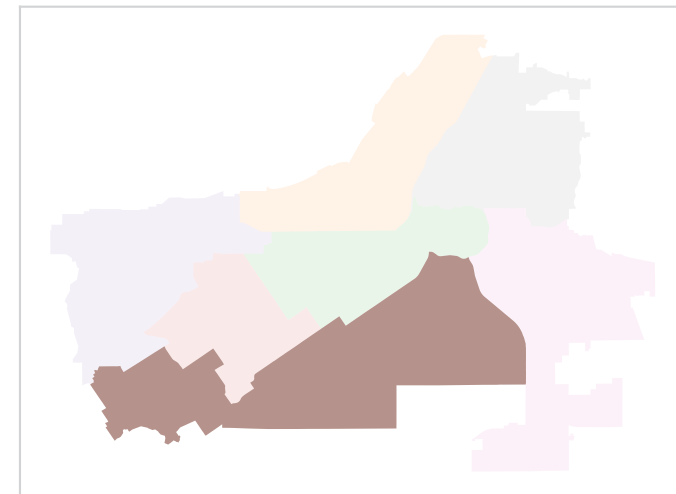
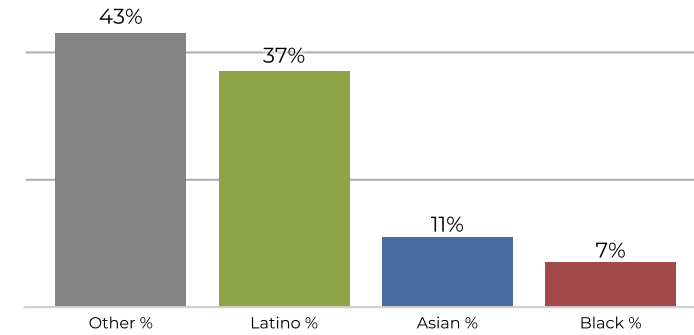
**District 5**



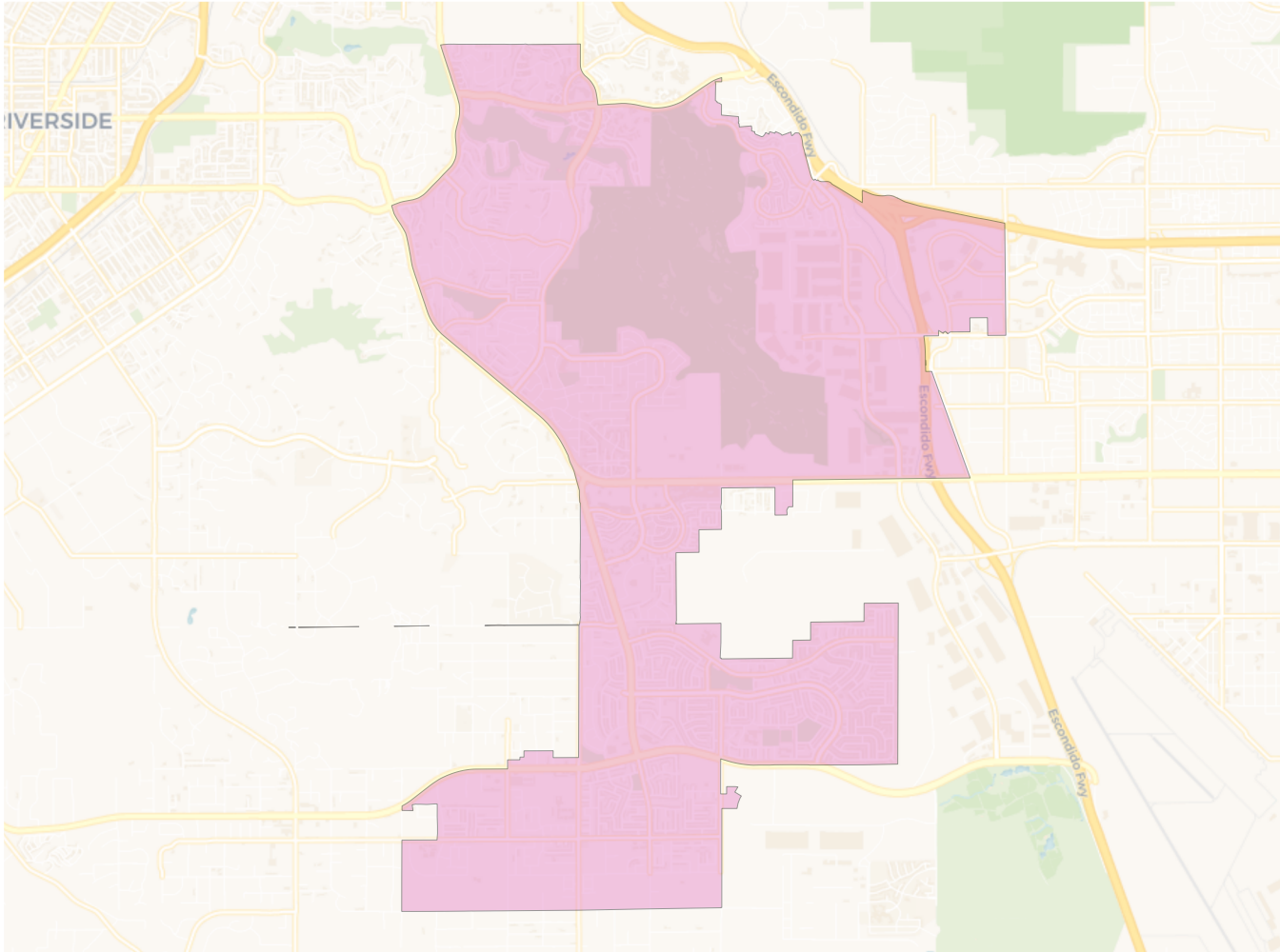
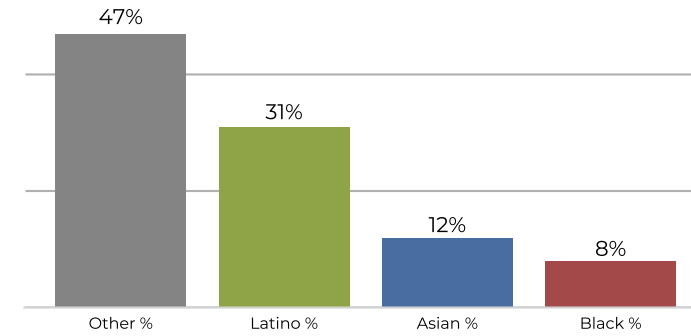
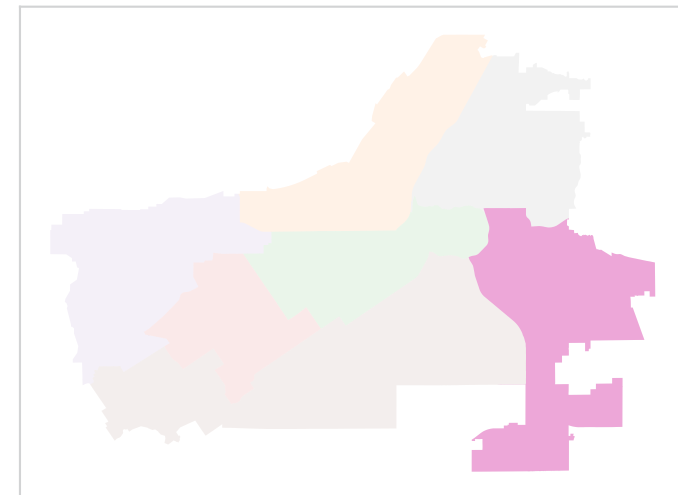
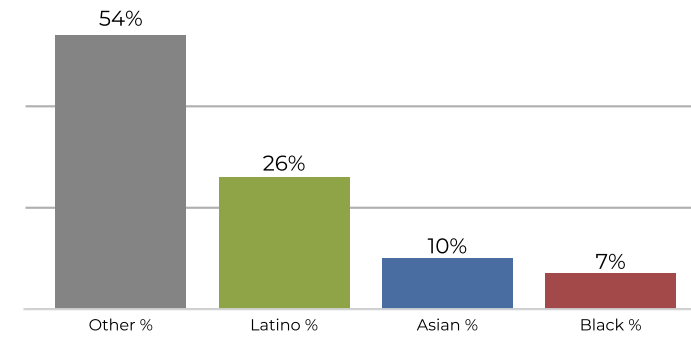
**2020 Census**



**Citizen Voting Age Population**



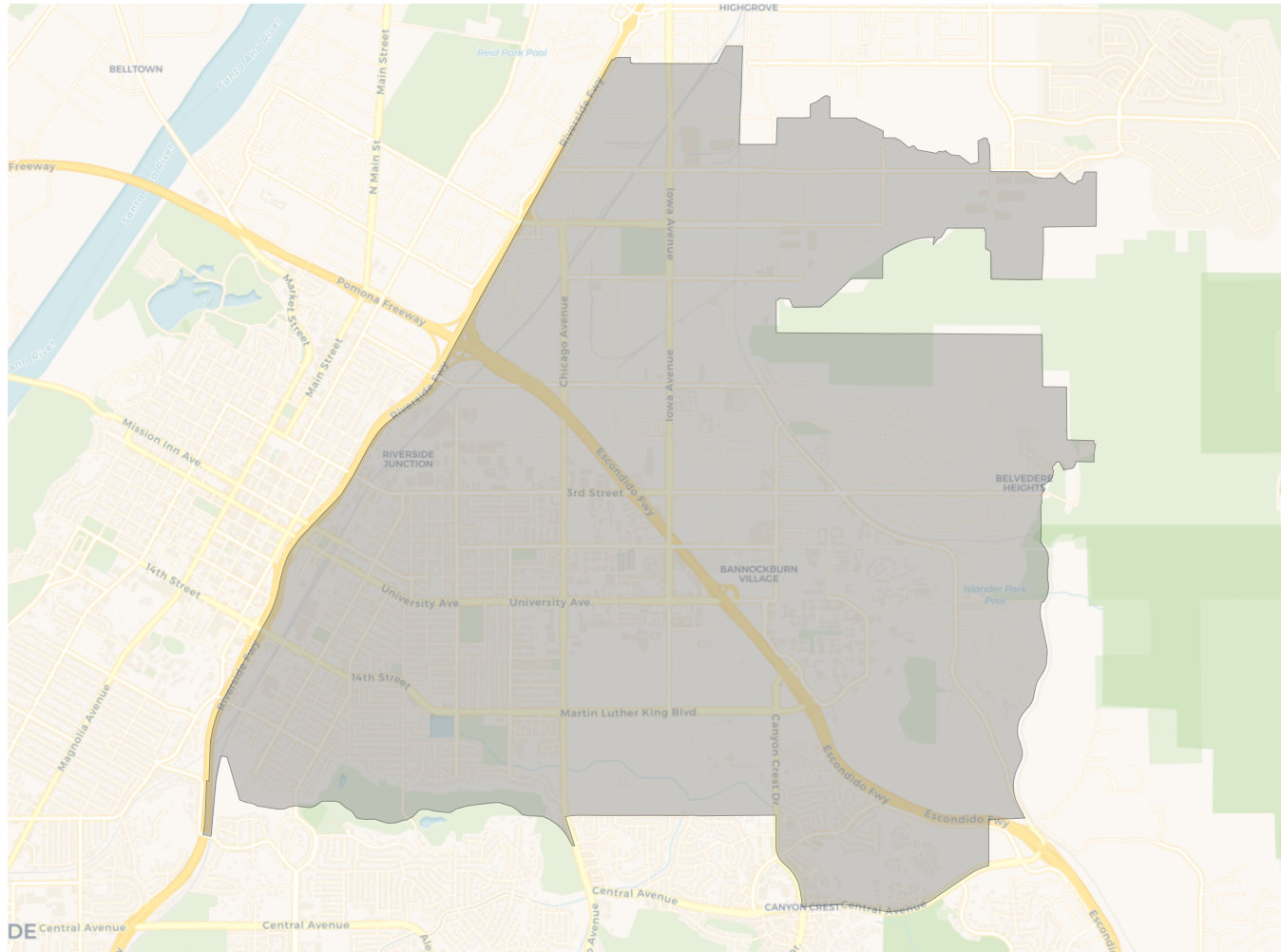
Population	Deviation	Deviation %	Other	Other %	Latino	Latino %	Asian	Asian %	Black	Black %
43,742	-1,464	-3.2%	16,653	38.1%	20,795	47.5%	3,789	8.7%	2,505	5.7%
Total CVAP	Other CVAP	Other CVAP %	Latino CVAP	Latino CVAP %	Asian CVAP	Asian CVAP %	Black CVAP	Black CVAP %		
32,121	14,114	43.9%	11,879	37.0%	3,787	11.8%	2,341	7.3%		

**District 6**

**2020 Census**

**Citizen Voting Age Population**


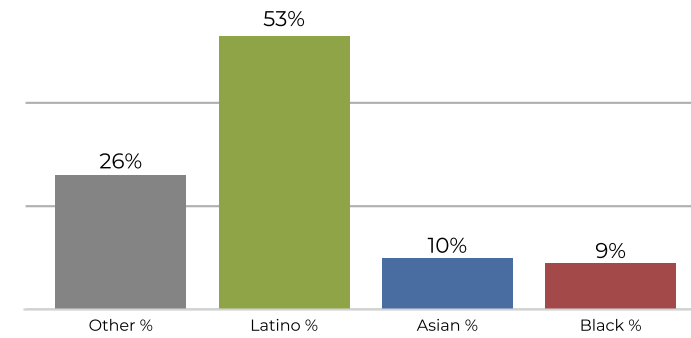
Population	Deviation	Deviation %	Other	Other %	Latino	Latino %	Asian	Asian %	Black	Black %
47,129	1,923	4.3%	22,550	47.8%	14,711	31.2%	5,974	12.7%	3,894	8.3%
Total CVAP	Other CVAP	Other CVAP %	Latino CVAP	Latino CVAP %	Asian CVAP	Asian CVAP %	Black CVAP	Black CVAP %		
34,108	18,570	54.4%	9,156	26.8%	3,676	10.8%	2,706	7.9%		



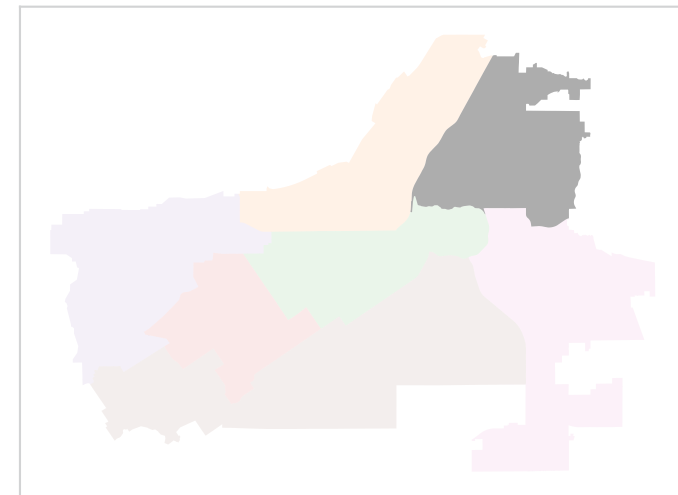
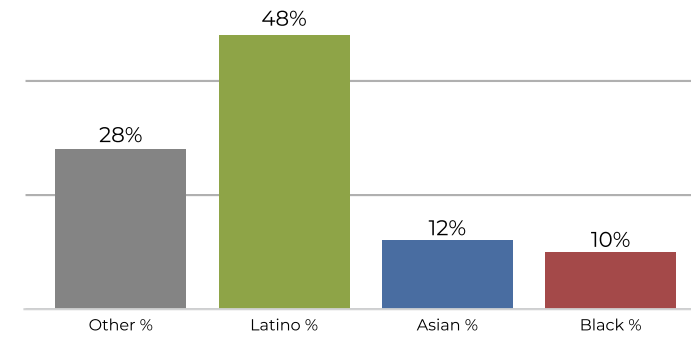
### District 7



### 2020 Census



### Citizen Voting Age Population



Population	Deviation	Deviation %	Other	Other %	Latino	Latino %	Asian	Asian %	Black	Black %
45,944	738	1.6%	12,062	26.3%	24,778	53.9%	4,980	10.8%	4,124	9.0%
Total CVAP	Other CVAP	Other CVAP %	Latino CVAP	Latino CVAP %	Asian CVAP	Asian CVAP %	Black CVAP	Black CVAP %		
30,607	8,760	28.6%	14,941	48.8%	3,852	12.6%	3,054	10.0%		