

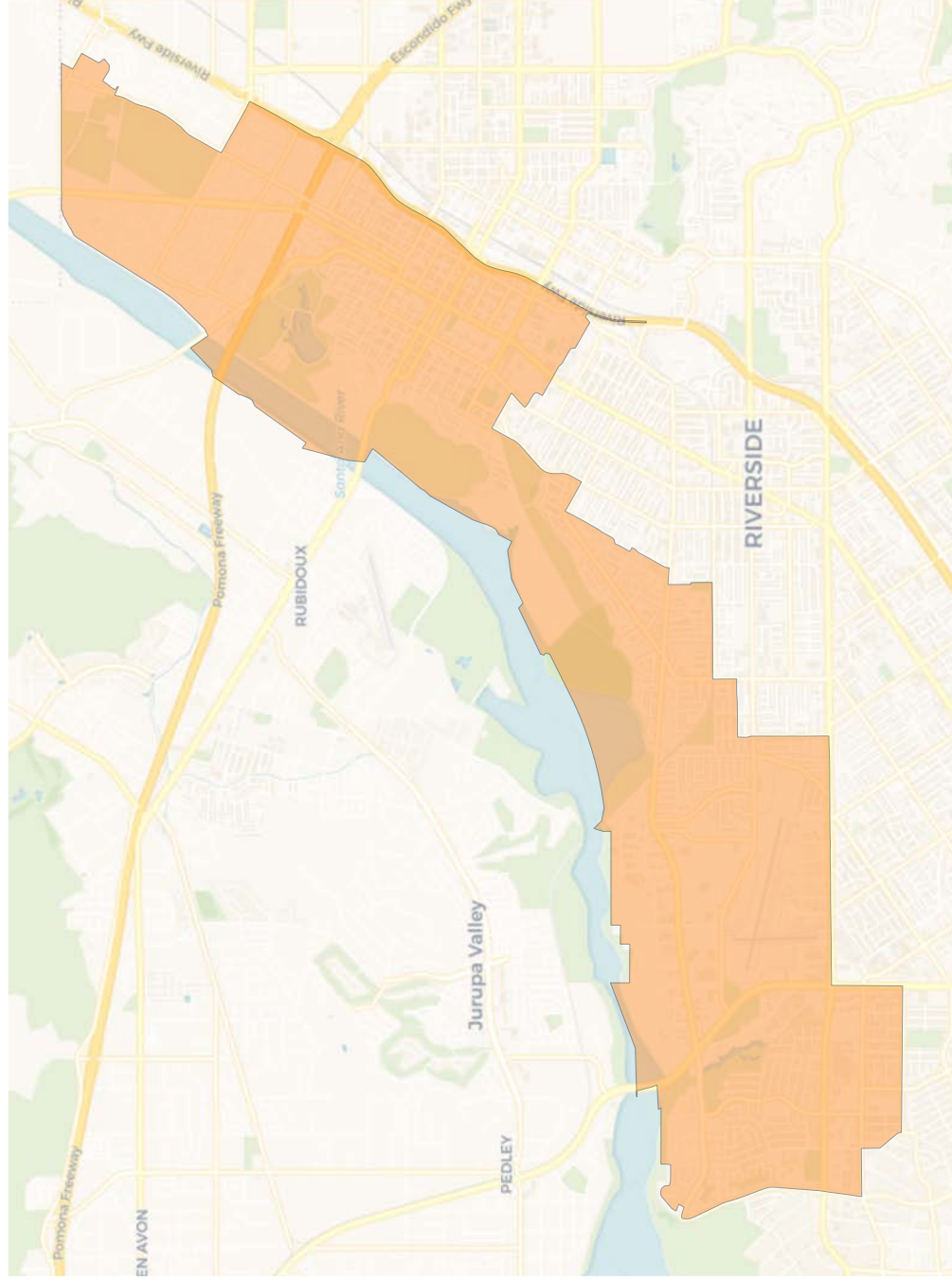
2020 Census

	1	2	3	4	5	6	7
Population	45,207	45,228	45,966	44,915	44,765	45,524	44,840
Deviation	1	22	760	-291	-441	318	-366
Deviation %	0.0%	0.0%	1.7%	-0.6%	-1.0%	0.7%	-0.8%
Other	11,219	19,141	10,066	10,234	18,528	21,280	11,221
Other %	24.8%	42.3%	21.9%	22.8%	41.4%	46.7%	25.0%
Latino	29,840	22,725	31,856	29,505	20,001	14,103	25,127
Latino %	66.0%	50.2%	69.3%	65.7%	44.7%	31.0%	56.0%
Asian	1,670	1,225	1,964	3,129	3,654	6,312	4,503
Asian %	3.7%	2.7%	4.3%	7.0%	8.2%	13.9%	10.0%
Black	2,478	2,137	2,080	2,047	2,582	3,829	3,989
Black %	5.5%	4.7%	4.5%	4.6%	5.8%	8.4%	8.9%

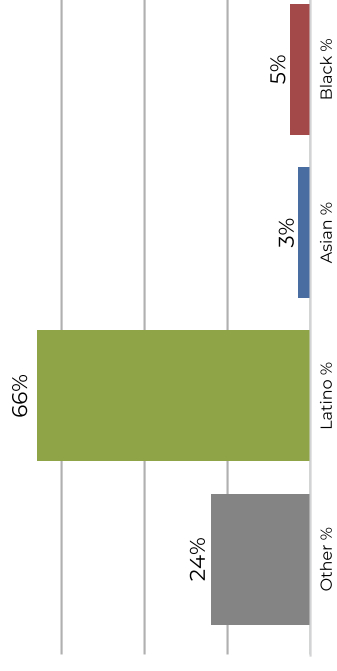
Citizen Voting Age Population (CVAP)

	1	2	3	4	5	6	7
Total CVAP	28,434	31,983	31,196	29,767	32,334	33,091	29,919
Other CVAP	9,575	16,322	10,290	8,781	15,648	17,260	8,085
Other CVAP %	33.7%	51.0%	33.0%	29.5%	48.4%	52.2%	27.0%
Latino CVAP	15,999	12,997	17,773	16,879	11,295	9,078	15,144
Latino CVAP %	56.3%	40.6%	57.0%	56.7%	34.9%	27.4%	50.6%
Asian CVAP	1,148	684	1,422	2,705	3,164	4,008	3,739
Asian CVAP %	4.0%	2.1%	4.6%	9.1%	9.8%	12.1%	12.5%
Black CVAP	1,712	1,980	1,711	1,402	2,227	2,745	2,951
Black CVAP %	6.0%	6.2%	5.5%	4.7%	6.9%	8.3%	9.9%

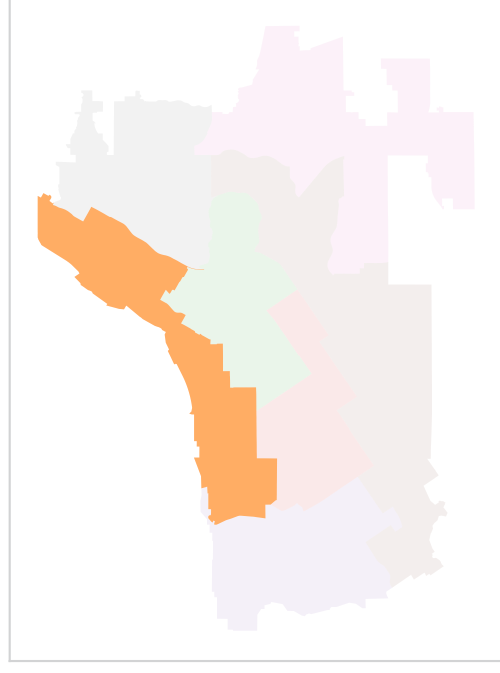
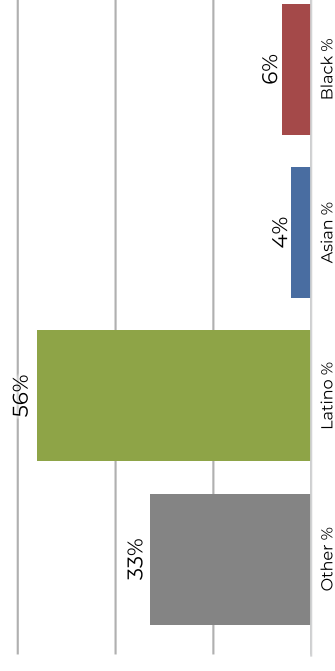
District 1



2020 Census

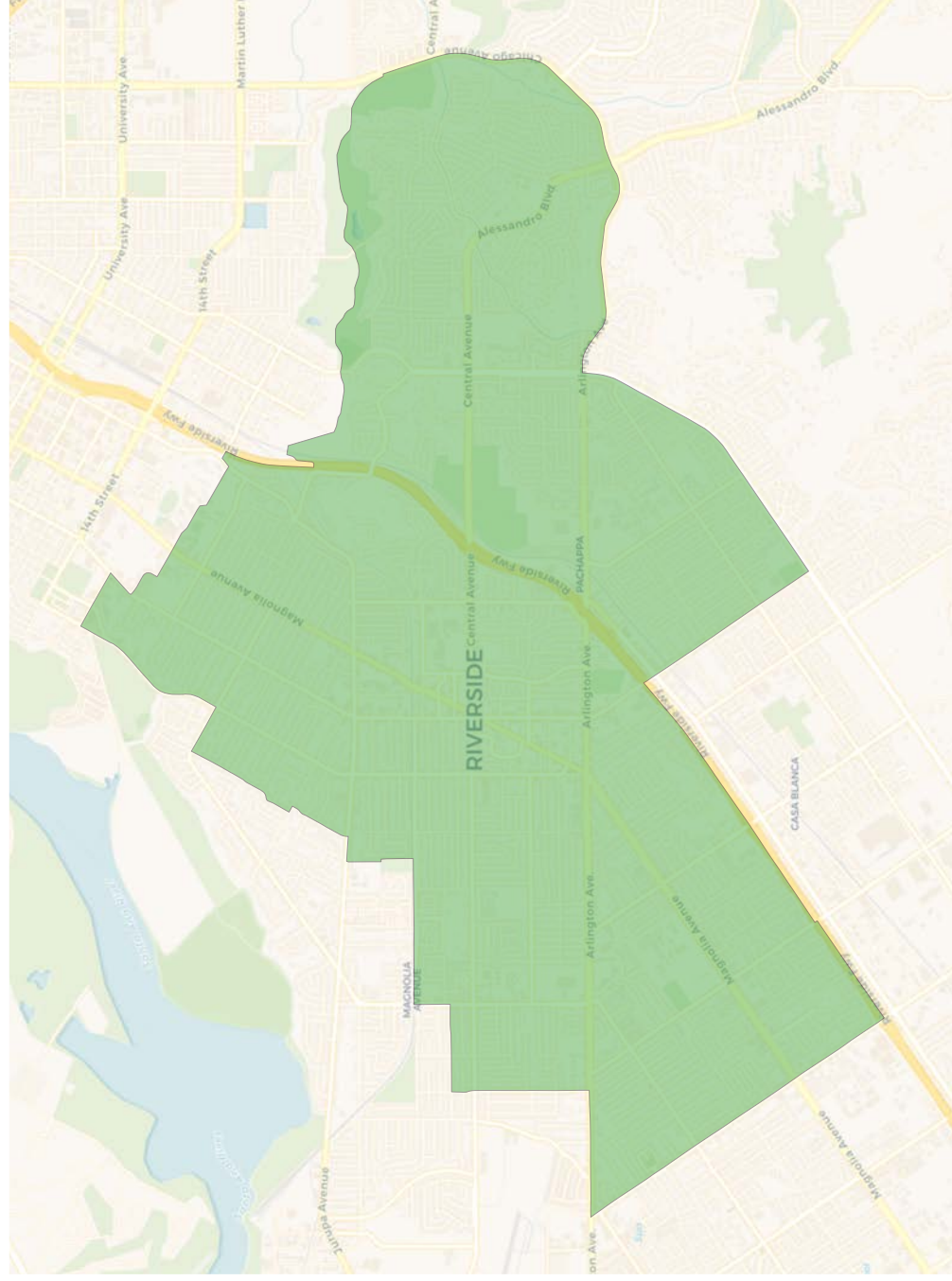


Citizen Voting Age Population

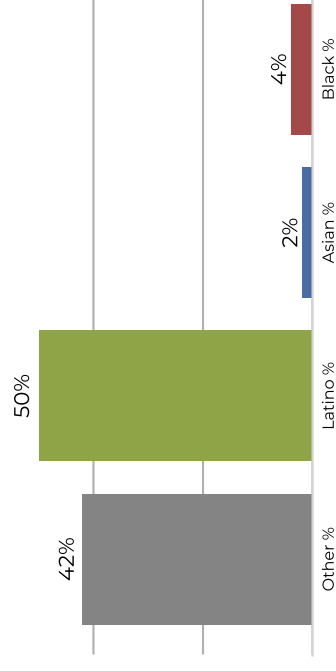


Population	Deviation	Deviation %	Other	Other %	Latino	Latino %	Asian	Asian %	Black	Black %
45,207	1	0.0%	11,219	24.8%	29,840	66.0%	1,670	3.7%	2,478	5.5%
Total CVAP	Other CVAP	Other CVAP %	Latino CVAP	Latino CVAP %	Asian CVAP	Asian CVAP %	Black CVAP	Black CVAP %	Latino CVAP	Black CVAP %
28,434	9,575	33.7%	15,999	56.3%	1,148	4.0%	1,712	6.0%		

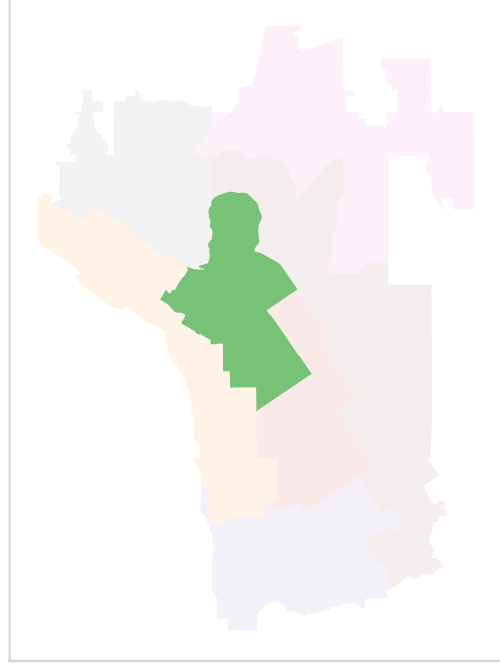
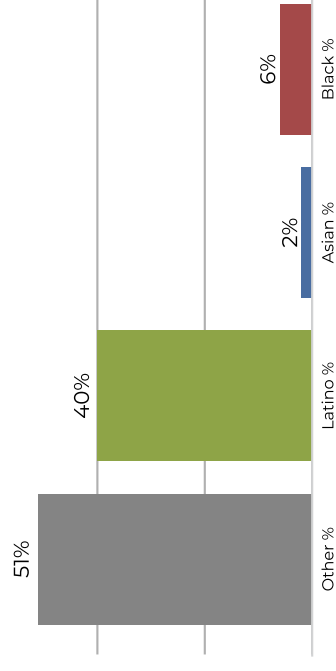
District 2



2020 Census

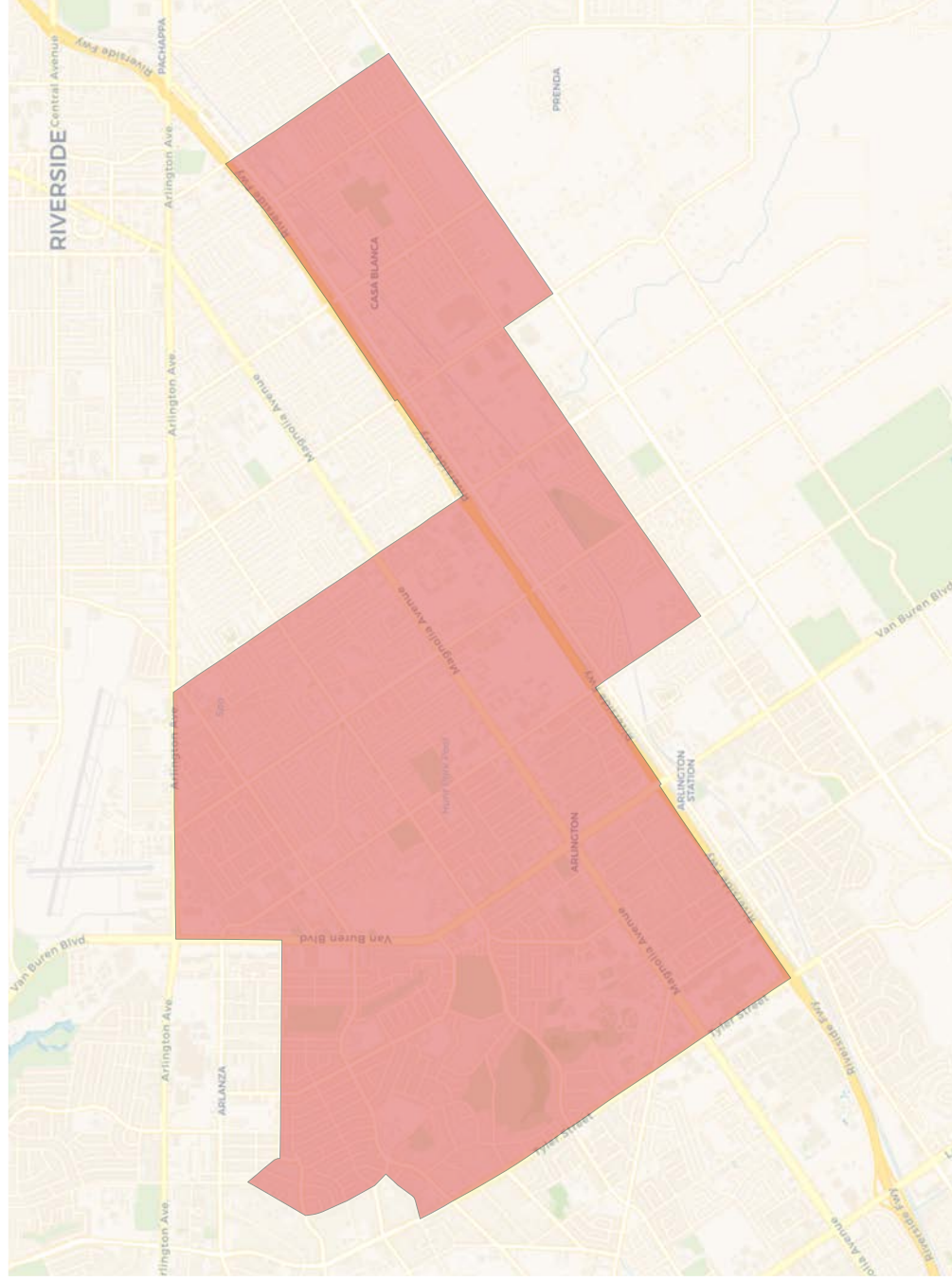


Citizen Voting Age Population

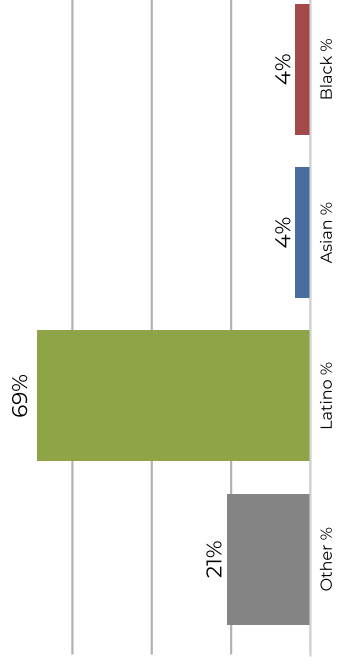


Population	Deviation	Deviation %	Other	Other %	Latino	Latino %	Asian	Asian %	Black	Black %
45,228	22	0.0%	19,141	42.3%	22,725	50.2%	1,225	2.7%	2,137	4.7%
Total CVAP	Other CVAP	Other CVAP %	Latino CVAP	Latino CVAP %	Asian CVAP	Asian CVAP %	Black CVAP	Black CVAP %		
31,983	16,322	51.0%	12,997	40.6%	684	2.1%	1,980	6.2%		

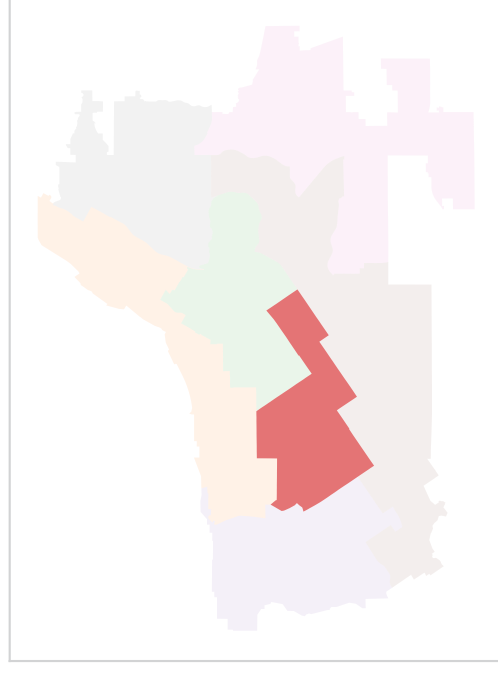
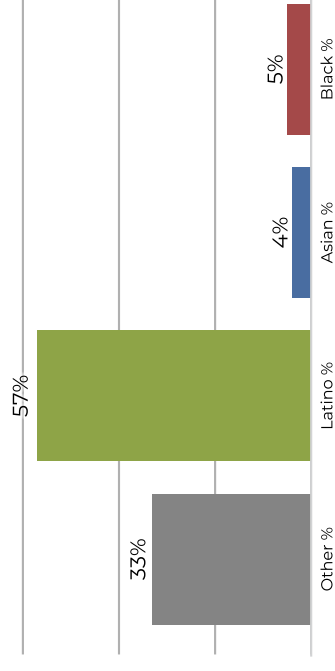
District 3



2020 Census

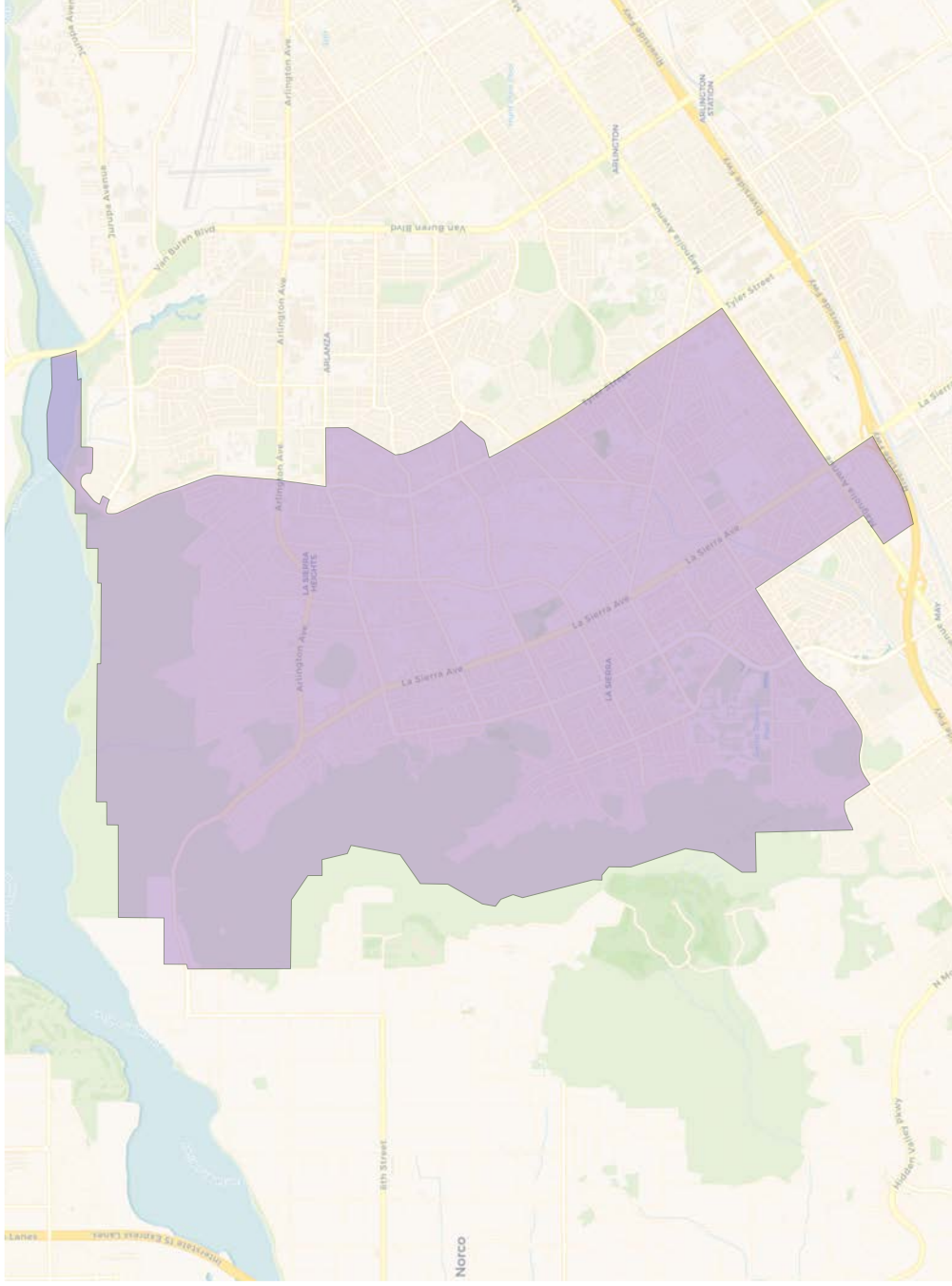


Citizen Voting Age Population

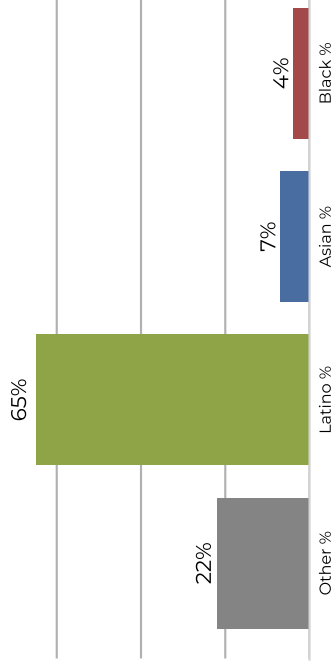


Population	Deviation	Deviation %	Other	Other %	Latino	Latino %	Asian	Asian %	Black	Black %
45,966	760	1.7%	10,066	21.9%	31,856	69.3%	1,964	4.3%	2,080	4.5%
Total CVAP	Other CVAP	Other CVAP %	Latino CVAP	Latino CVAP %	Asian CVAP	Asian CVAP %	Black CVAP	Black CVAP %		
31,196	10,290	33.0%	17,773	57.0%	1,422	4.6%	1,771	5.5%		

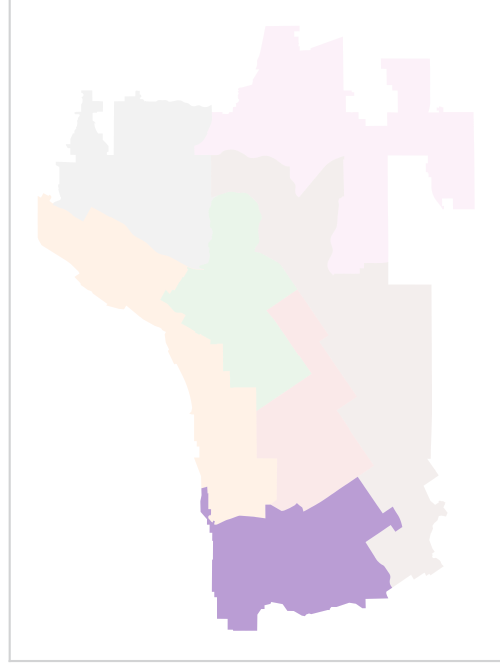
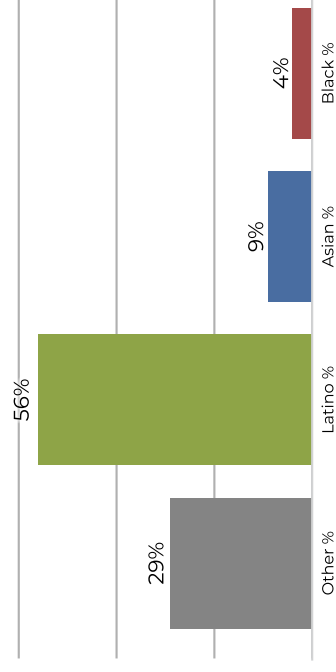
District 4



2020 Census

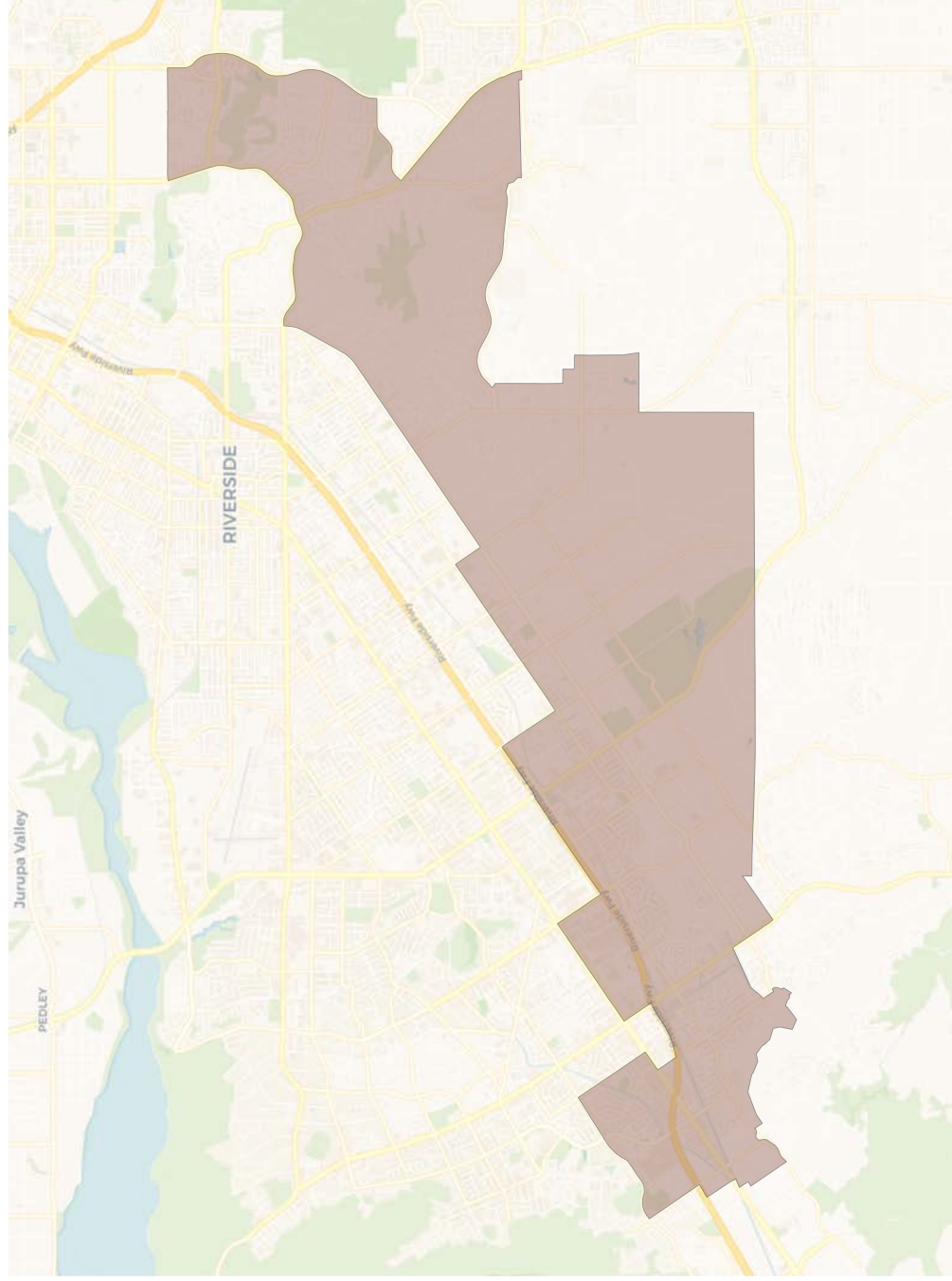


Citizen Voting Age Population

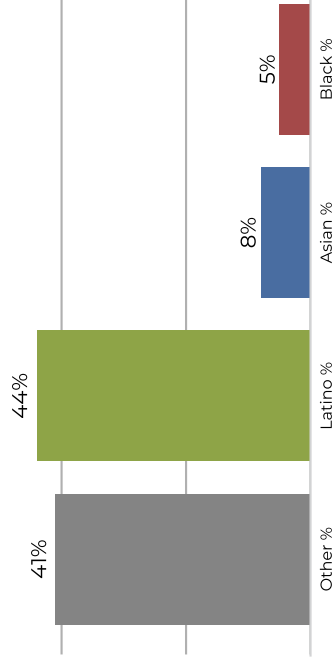


Population	Deviation	Deviation %	Other	Other %	Latino	Latino %	Asian	Asian %	Black	Black %
44,915	-291	-0.6%	10,234	22.8%	29,505	65.7%	3,129	7.0%	2,047	4.6%
Total CVAP	Other CVAP	Other CVAP %	Latino CVAP	Latino CVAP %	Asian CVAP	Asian CVAP %	Black CVAP	Black CVAP %		
29,767	8,781	29.5%	16,879	56.7%	2,705	9.1%	1,402	4.7%		

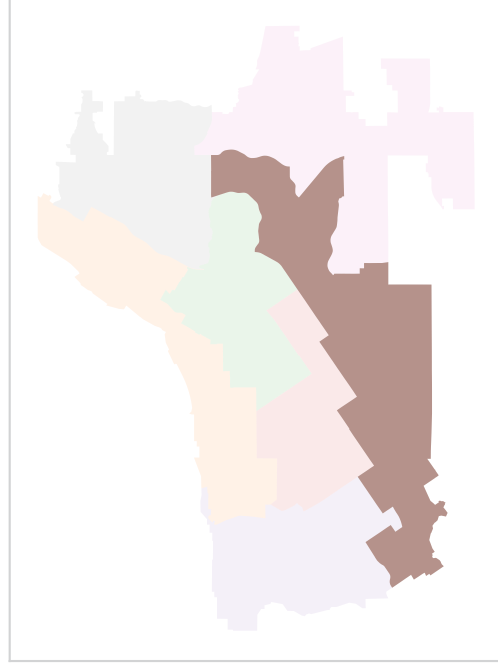
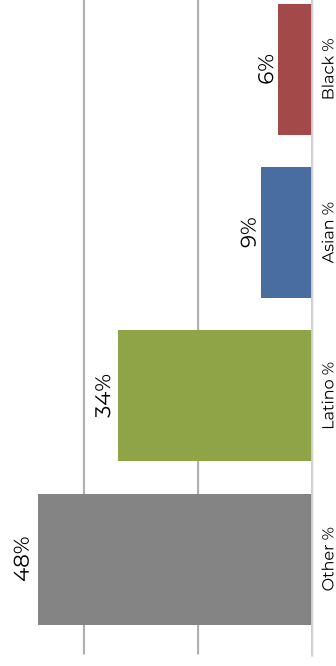
District 5



2020 Census

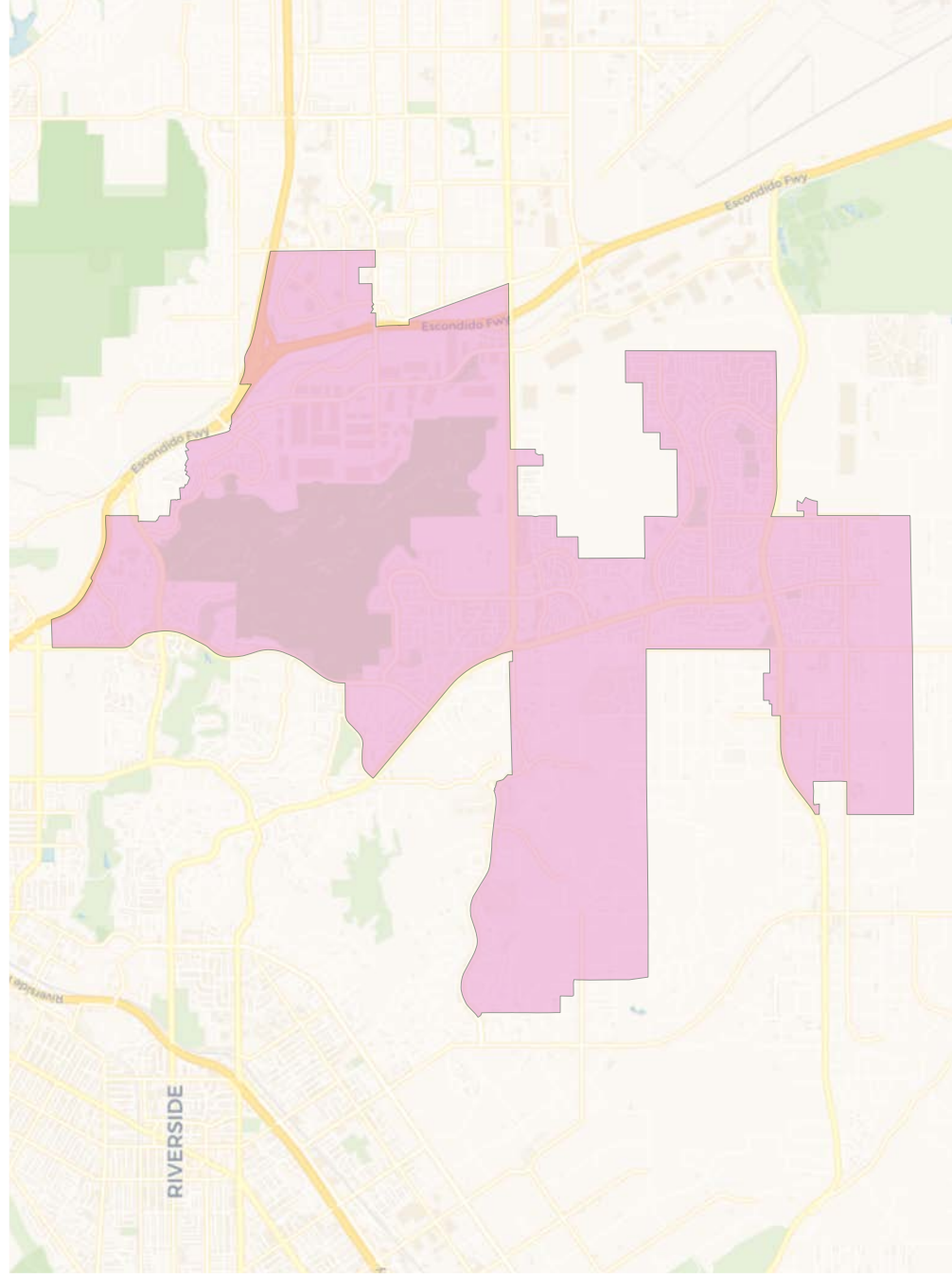


Citizen Voting Age Population

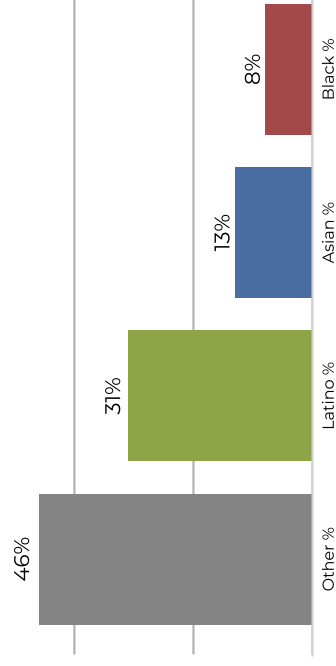


Population	Deviation	Deviation %	Other	Other %	Latino	Latino %	Asian	Asian %	Black	Black %
44,765	-441	-1.0%	18,528	41.4%	20,001	44.7%	3,654	8.2%	2,582	5.8%
Total CVAP	Other CVAP	Other CVAP %	Latino CVAP	Latino CVAP %	Asian CVAP	Asian CVAP %	Black CVAP	Black CVAP %		
32,334	15,648	48.4%	11,295	34.9%	3,164	9.8%	2,227	6.9%		

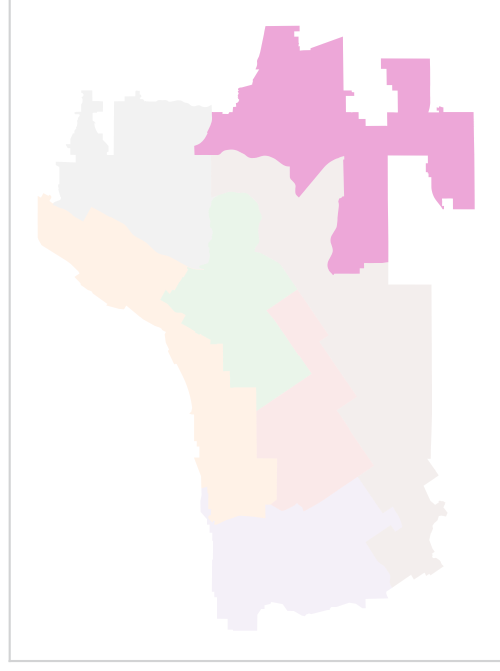
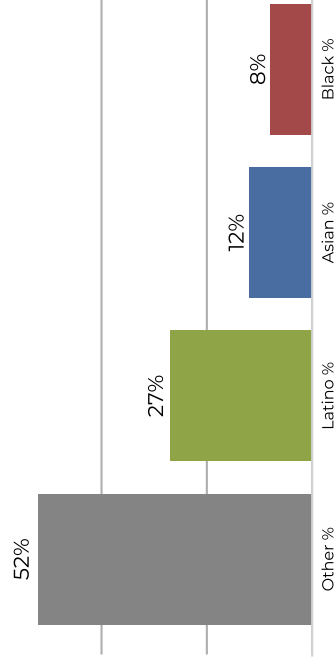
District 6



2020 Census

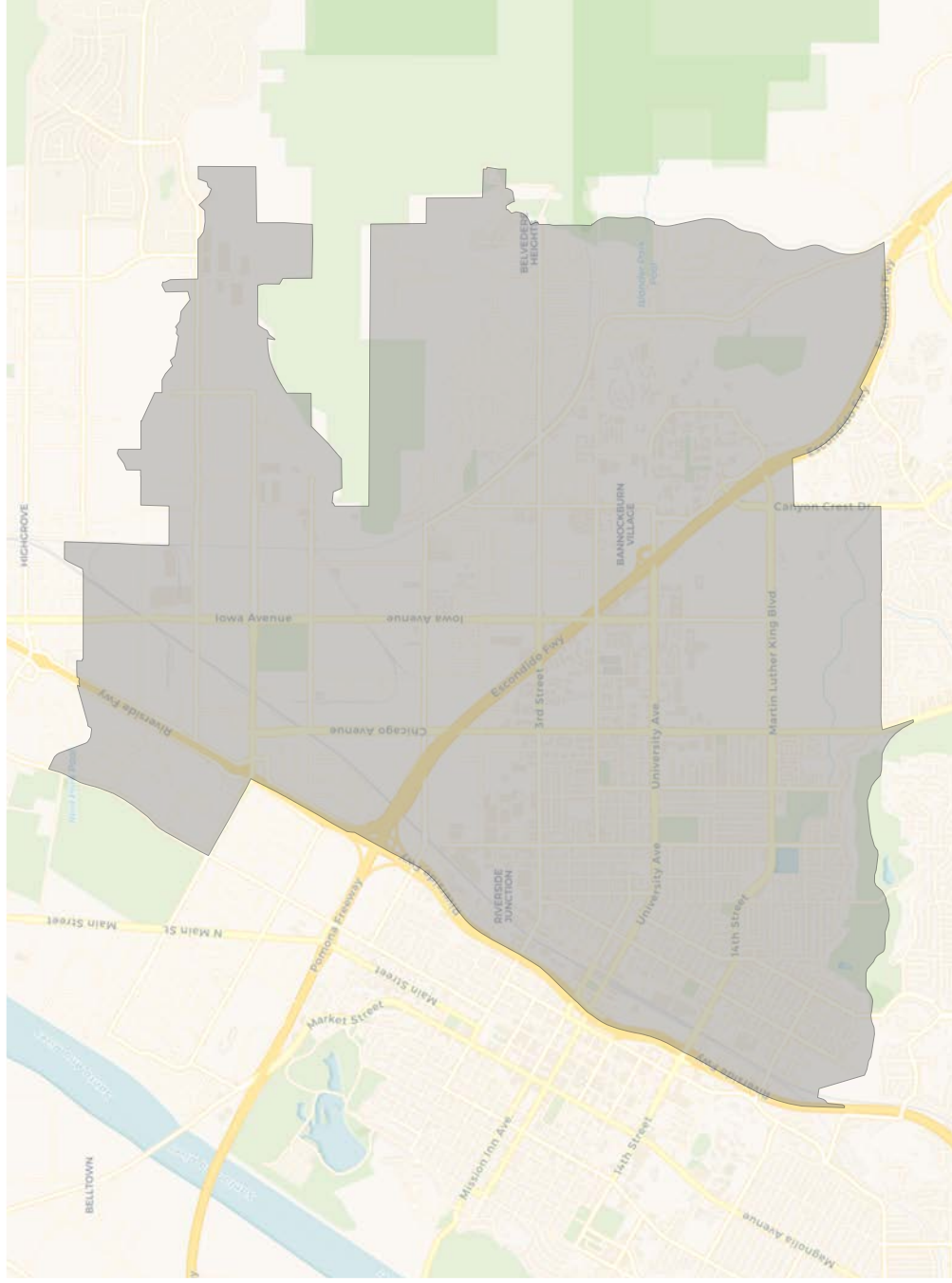


Citizen Voting Age Population

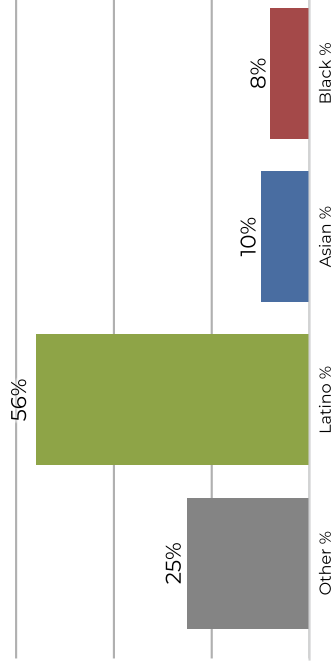


Population	Deviation	Deviation %	Other	Other %	Latino	Latino %	Asian	Asian %	Black	Black %
45,524	318	0.7%	21,280	46.7%	14,103	31.0%	6,312	13.9%	3,829	8.4%
Total CVAP	Other CVAP	Other CVAP %	Latino CVAP	Latino CVAP %	Asian CVAP	Asian CVAP %	Black CVAP	Black CVAP %	Black CVAP %	Black CVAP %
33,091	17,260	52.2%	9,078	27.4%	4,008	12.1%	2,745	8.3%	8.3%	

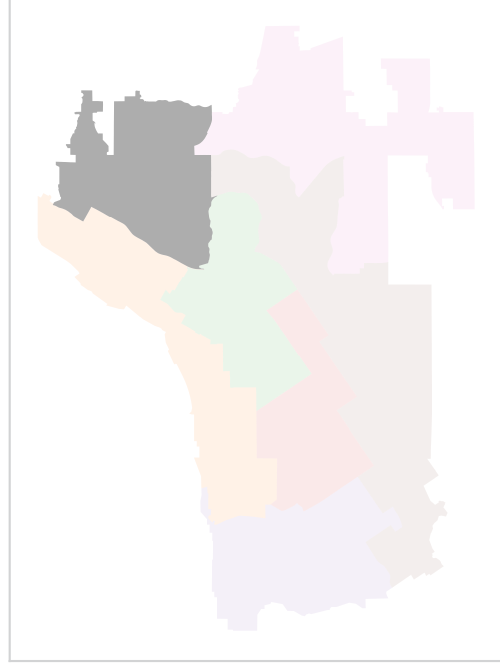
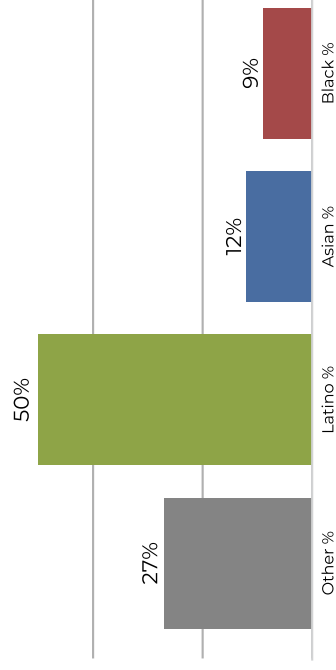
District 7



2020 Census



Citizen Voting Age Population



Population	Deviation	Deviation %	Other	Other %	Latino	Latino %	Asian	Asian %	Black	Black %
44,840	-366	-0.8%	11,221	25.0%	25,127	56.0%	4,503	10.0%	3,989	8.9%
Total CVAP	Other CVAP	Other CVAP %	Latino CVAP	Latino CVAP %	Asian CVAP	Asian CVAP %	Black CVAP	Black CVAP %		
29,919	8,085	27.0%	15,144	50.6%	3,739	12.5%	2,951	9.9%		