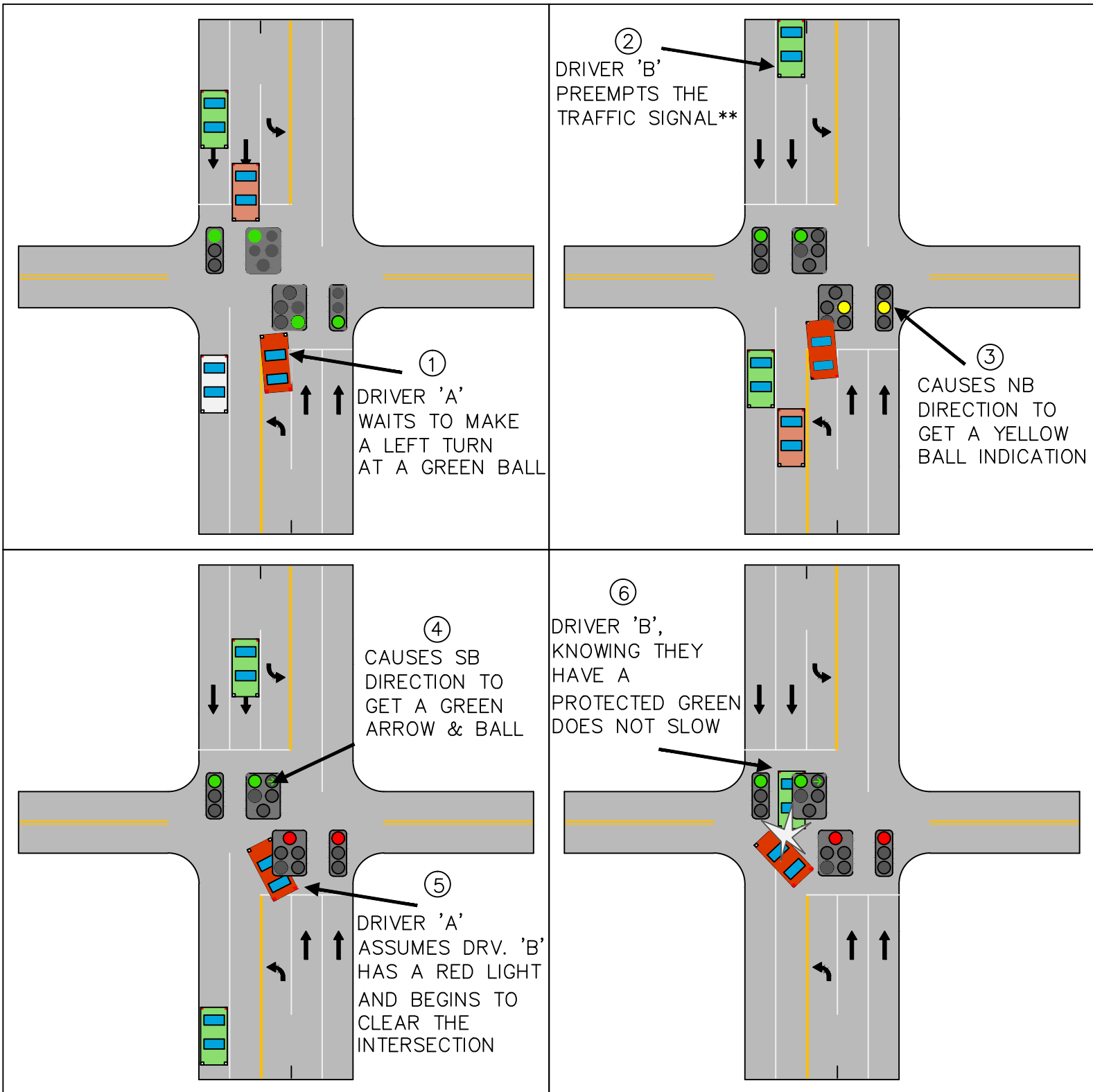


ILLUSTRATION OF THE "YELLOW TRAP"*

5-SECTION (REGULAR) PROTECTED/PERMISSIVE SIGNAL



*WHILE RIVERSIDE CURRENTLY AVOIDS THE OCCURENCE OF THE "YELLOW TRAP" THROUGH PROGRAMMING, THE PROPOSED 4-SECTION CONFIGURATION AVOIDS THE "YELLOW TRAP" ENTIRELY

** PREEMPTION REFERS TO THE USE OF AN EMITTER DEVICE TO FORCE A TRAFFIC SIGNAL TO GO 'GREEN' IN THE DIRECTION OF THE DEVICE. USED LEGALLY BY FIRE/AMBULANCES, BUT THERE ARE MANY ILLEGAL EMITTERS USED BY MOTORISTS