

**FIRST AMENDMENT TO SERVICES AGREEMENT  
FOR FESTIVAL OF LIGHTS**

**SOUTHERN CALIFORNIA LIGHTING, INC.**

This FIRST AMENDMENT TO SERVICES AGREEMENT FOR FESTIVAL OF LIGHTS (“First Amendment”) is made and entered into this \_\_\_\_\_ day of \_\_\_\_\_, 2024, by and between the CITY OF RIVERSIDE, a California charter city and municipal corporation (“City”), and SOUTHERN CALIFORNIA LIGHTING, INC., a California corporation (“Contractor”).

**RECITALS**

WHEREAS, on November 16, 2023, City and Contractor entered into a Services Agreement for Festival of Lights (“Agreement”); and

WHEREAS, the Agreement expired January 31, 2024; and

WHEREAS, paragraph 2 of the Agreement provides the Term may be extended for an additional one (1) year period upon mutual consent of City and Contractor; and

WHEREAS, City and Contractor desire to extend the Term of the Agreement through January 31, 2025, and increase Compensation in the amount of One Hundred Seventy-Five Thousand Dollars (\$175,000.00) for the extended term of the Agreement.

NOW, THEREFORE, in consideration of the foregoing recitals which are incorporated herein by this reference, City and Contractor agree as follows:

1. Paragraph 2, Term, is hereby amended to extend the Term of the Agreement for an additional one (1) year period, through January 31, 2025.

2. Paragraph 3, Compensation, is hereby amended to increase Compensation in the amount of One Hundred Seventy-Five Thousand Dollars (\$175,000.00) for the extended term of the Agreement.

3. Exhibit “A” of the Agreement is amended and replaced in its entirety with Exhibit “A-1,” attached hereto and incorporated herein by this reference.

4. All terms and conditions of the original Agreement not inconsistent with this First Amendment shall remain in full force and effect and are incorporated herein by this reference as though set forth in full.

**[SIGNATURES ON FOLLOWING PAGE.]**

IN WITNESS WHEREOF, City and Contractor have caused this First Amendment to Services Agreement for Festival of Lights to be duly executed on the day and year first above written.

CITY OF RIVERSIDE, a California charter City and municipal corporation

SOUTHERN CALIFORNIA LIGHTING INC., a California corporation

By: \_\_\_\_\_  
City Manager

By: Mathew Kronquist  
Printed Name: mathew kronquist

Title: president  
(Signature of Board Chair, President, or Vice President)

Attest:

By: \_\_\_\_\_  
City Clerk

and

By: Melissa Kronquist  
Printed Name: \_\_\_\_\_  
Title: \_\_\_\_\_  
(Signature of Secretary, Assistant Secretary, CFO, Treasurer, or Assistant Treasurer)

Certified as to Availability of Funds

By: Kristina  
Chief Financial Officer

Approved as to form:

By: Tan A. Tro  
Deputy City Attorney

**EXHIBIT "A-1"**

**SCOPE OF SERVICES**



**WE PRESENT**

---



CITY OF  
**RIVERSIDE**

## 2024 CHANGES AND DETAILS EXPLAINED

THE LARGE PRESENT BOX IN THE WALKING PATH WILL BE CHANGED TO THE NEW ONE SHOWN IN THIS PRESENTATION - THIS IS ALSO A MASSIVE WALK THROUGH PRESENT BOX BUT WITH A NEW LOOK

THE TREES ON MAIN STREET BETWEEN 6TH AND 5TH STREET WERE INSTALLED PERMANENTLY IN 2023. WE WILL BE GIVING A DECOR CREDIT FOR NOT HAVING TO WRAP THESE TREES IN 2024. ALONG WITH EXTRA DECOR / PHOTO OP BEING PROVIDED WE WILL BE SERVICING THE LIGHTS AND MAKING SURE THEY ARE ALL IN WORKING CONDITION. WITH TREE GROWTH, VANDALISM AND NORMAL WEAR AND TEAR WE ANTICIPATE THE NEED TO TAKE CARE OF SOME REPAIRS AND REPLACEMENT. IF FOR SOME REASON THE LIGHTS ARE IN CONDITIONS THAT WE NEED TO SERVICE MORE THAN 25% OF THE PROJECT WE WILL NEED TO HAVE A FURTHER EVALUATION AND CONSIDER ADDITIONAL COSTS.

PLACEMENT OF THE DECOR FOR 2024 CAN BE MODIFIED IF NECESSARY. PLEASE ALLOW THE CITY STAFF TO INFORM US OF THESE CHANGES IN LOCATION PRIOR TO THE INSTALLATION DATE.

THE RIVERSIDE SIGN WHICH HAD VANDALISM AND SEVERAL BROKEN LIGHT BULBS HAS BEEN RETROFIT WITH MORE DURABLE BULBS AND SHOULD WITHSTAND SOME ADDITIONAL ABUSE DURING THE SEASON.

# 2024 PRICING BREAKDOWN

TOTAL TO INCLUDE: INSTALL, SERVICE & REMOVAL YEAR 2: \$175,000

ALL PRODUCT SUPPLIED AS A RENTAL

PACKAGE ONGOING PRICE LOCK Year 3: \$175,000 Year 4: \$175,000

## LABOR INCLUDED (install - service - removal)

### WHITE PARK

- 2 - 10' 2D Ornament displays
- 2 - 5' 2D Ornament / Present Combo displays
- 2 - Palm trees at park entrance wrapped with Micro LED lights

### PEDESTRIAN WALKWAY

- Animated Spritzers added to the tree canopies on Main St. Between 5th and 6th
- 28' Majestic Pine Christmas Tree
  - Traditional ornament package
- 6' Majestic Star lighted display
- 10' Majestic Present Box lighted display
- Animated Starbursts and Spritzers within tree canopies
- 2 - 6' Majestic Deer lighted displays
- Lighted Garland installed along hand rails that cross the fountain
- 2 - 48" Lighted Wreaths installed on the outer panel of the hand rails
- 10' Majestic Ornament lighted display
- Walk through Red and Gold Present Box photo op / interactive
  - 19' W x 16.5' H x 16.5' D

- 9' 3D Big Star
  - Pure LED lights with animated bursting effect
- 10' Tall Gold Standing Bow
- Stand within / Walk under Gold and White Lighted Present Box with Ribbon
- Walk Through Heart of Christmas Ornament
  - 16' H x 15' W x 15' D
- 2 - 3' 2D Gold and Red Present Box displays
- 8' Lighted North Pole Wayfinder Sign
- Walk through Santa Display
  - 14' H x 10' W x 4' D
- 4' Lighted Marquee Style Lettering
  - RIVERSIDE

## WHITE PARK ENTRY

2 - 10' 2D Ornament displays

2 - 5' 2D Ornament / Present Combo  
displays

2 - Palm trees at park entrance  
wrapped with Micro LED lights and  
colored up lights to illuminate the  
canopies



2D Display Option  
Live Photo





2D Display Option  
Live Photo



## PEDESTRIAN PATH DECOR

(Exact Item Placement TBD)

28' Majestic Pine Christmas Tree  
- Traditional ornament  
package

6' Majestic Star lighted display

10' Majestic Present Box lighted  
display

Animated Starbursts and Spritzers  
within the canopies

**Trees wrapped in warm white LED  
Micro lights were left up  
permanent in 2023 in  
replacement of the tree wraps we  
will be offering the repair and  
adjustment of these trees as they  
will be ready for a revamp in 2024  
and we will also install a few  
additional decor pieces TBD both  
items and locations**



FRAME TREE  
Live Photo



## PEDESTRIAN PATH DECOR

(Exact Item Placement TBD)

2 - 6' Majestic Deer lighted displays

Lighted Garland installed along hand rails that cross the fountain

2 - 48" Lighted Wreaths installed on the outer panel of the hand rails



Majestic Deer  
Live Photo



## PEDESTRIAN PATH DECOR

(Exact Item Placement TBD)

Trees wrapped with Micro LED Warm  
/ Pure lights

Pure Lighted Spritzers within the  
canopies

**Trees wrapped in warm white LED  
Micro lights were left up  
permanent in 2023 in  
replacement of the tree wraps we  
will be offering the repair and  
adjustment of these trees as they  
will be ready for a revamp in 2024  
and we will also install a few  
additional decor pieces TBD both  
items and locations**



## PEDESTRIAN PATH DECOR

(Exact Item Placement TBD)

10' Majestic Ornament lighted display

Trees wrapped with warm white Micro LED lights

Trees wrapped in warm white LED Micro lights were left up permanent in 2023 in replacement of the tree wraps we will be offering the repair and adjustment of these trees as they will be ready for a revamp in 2024 and we will also install a few additional decor pieces TBD both items and locations



Majestic Displays  
Live Photo





## PEDESTRIAN PATH DECOR

(Exact Item Placement TBD)

Walk through Red and Gold Present  
Box photo op / interactive  
19' W x 16.5' H x 16.5' D



Walk Through Gift  
Box  
Live Photo



## PEDESTRIAN PATH DECOR

(Exact Item Placement TBD)

9' 3D Big Star  
Pure LED lights with animated  
bursting effect



3D Big Star  
Live Photo



## PEDESTRIAN PATH DECOR

(Exact Item Placement TBD)

10' Tall Gold Standing Bow



10' Tall Gold Bow  
Live Photo



Majestic Displays  
Live Photo



## PEDESTRIAN PATH DECOR

(Exact Item Placement TBD)

Stand within / Walk under Gold and White Lighted Present Box with Ribbon

Trees wrapped in Micro LED lights

Trees wrapped in warm white LED Micro lights were left up permanent in 2023 in replacement of the tree wraps we will be offering the repair and adjustment of these trees as they will be ready for a revamp in 2024 and we will also install a few additional decor pieces TBD both items and locations





Gift Box with Ribbon  
Live Photo



## Visit Santa Area

(Exact Item Placement TBD)

Walk Through Heart of Christmas Ornament  
16' H x 15' W x 15' D

2 - 3' 2D Gold and Red Present Box displays

8' Lighted North Pole Wayfinder Sign

Walk through Santa Display  
14' H x 10' W x 4' D

Palm Trees wrapped with Micro LED lights



Heart of Christmas  
Live Photo



Photo example of  
santa photo up close

Small Group



Walk Through Santa  
Live Photo



## PURCHASE ITEM

4' Lighted Marquee Style Lettering

RIVERSIDE



# PRODUCT SPECS



## COMMERCIAL FRAME TREE SPECS



Product Description	# of Lights	# of Sets	# of tips	# of regular Branches	# of upper Branches	Tree Frame Base Diameter	Base with Branches	Electrical Watts	Electrical Amps	LBS Weight	Cubes
12' Commercial Frame Tree - Lit - 5 mm Wide Angle Conical	2150	43	5694	11	6	2	8	206.4	1.79	200	48
14' Commercial Frame Tree - Lit - 5 mm Wide Angle Conical	2950	59	8254	19	6	3	9	283.2	2.46	295	74
16' Commercial Frame Tree - Lit - 5 mm Wide Angle Conical	3950	79	11454	29	6	4	10	379.2	3.30	405	107
18' Commercial Frame Tree - Lit - 5 mm Wide Angle Conical	5150	103	15294	41	6	5	11	494.4	4.30	555	139
20' Commercial Frame Tree - Lit - 5 mm Wide Angle Conical	6650	133	20094	56	6	6	12	638.4	5.55	740	237
22' Commercial Frame Tree - Lit - 5 mm Wide Angle Conical	8450	169	25854	74	6	7	13	811.2	7.05	960	306
24' Commercial Frame Tree - Lit - 5 mm Wide Angle Conical	10550	211	32574	95	6	8	14	1012.8	8.81	1210	367
26' Commercial Frame Tree - Lit - 5 mm Wide Angle Conical	12950	259	40254	119	6	9	15	1243.2	10.81	1505	421
28' Commercial Frame Tree - Lit - 5 mm Wide Angle Conical	15650	313	48894	146	6	10	16	1502.4	13.06	1840	507
30' Commercial Frame Tree - Lit - 5 mm Wide Angle Conical	18650	373	58494	176	6	11	17	1790.4	15.57	2210	576
32' Commercial Frame Tree - Lit - 5 mm Wide Angle Conical	21950	439	69054	209	6	12	18	2107.2	18.32	2610	653
34' Commercial Frame Tree - Lit - 5 mm Wide Angle Conical	25550	511	80574	245	6	13	19	2452.8	21.33	3040	729
36' Commercial Frame Tree - Lit - 5 mm Wide Angle Conical	29450	589	93054	284	6	14	20	2827.2	24.58	3555	796
38' Commercial Frame Tree - Lit - 5 mm Wide Angle Conical	33650	673	106494	326	6	15	21	3230.4	28.09	4165	948
40' Commercial Frame Tree - Lit - 5 mm Wide Angle Conical	38150	763	120894	371	6	16	22	3662.4	31.85	4840	1100
42' Commercial Frame Tree - Lit - 5 mm Wide Angle Conical	42950	859	136254	419	6	17	23	4123.2	35.85	5565	1200
44' Commercial Frame Tree - Lit - 5 mm Wide Angle Conical	48050	961	152574	470	6	18	24	4612.8	40.11	6335	1400
46' Commercial Frame Tree - Lit - 5 mm Wide Angle Conical	53450	1069	169854	524	6	19	25	5131.2	44.62	7150	1600
48' Commercial Frame Tree - Lit - 5 mm Wide Angle Conical	59150	1183	188094	581	6	20	26	5678.4	49.38	8050	1800
50' Commercial Frame Tree - Lit - 5 mm Wide Angle Conical	65150	1303	207294	641	6	21	27	6254.4	54.39	9000	2000

# PRODUCT SPECS

## Cœur de Noël

201805

### Technical Data

Tension	120 V
Power	945 W
Class / IP	Classe II / IP 54
Weigh (lb)	503.88 lb
Dimensions H x W x D	14.43 x 15.74 x 14.60 ft
Type of cable	PVC
Connecting	UL Plug & Light
Number of fastenings	-
Fastening types	On floor
Main material	Aluminium
Extendable	-
Cable color	white
Animation	Glittering
Animator	-
Technology	LED
Bright points (light)	11117
BP/Power Ratio	11.76
Luminosity (Lumen)	36130 lm
Colors	Warm White
Dominant color	Warm White
Sockets number	-
Sockets type	-
Bulbs	LED
Decorative material	Balls gold/silver, mirror flake, stained glass frosted
Conditioning	Polyethylene Recyclé
Type	Luminous decor
Class	to lay
Brand	Leblanc



www.leblanc-illuminations.fr Groupe Leblanc® | 6-8 rue Michaël Faraday | 72027 Le Mans Cedex 2 | France  
Standard | Tél. +33 (0)2 43 61 43 61 - email : contact@groupe-leblanc.com



Decor 3D AP 'Coeur de Noël' H: 14.43 W: 15.74 D: 14.60 ft  
LED white/BC glittering

THE DESIGNS ARE SUPPLIED WITH THEIR ATTACHMENTS.  
Not included: decorative balls, chains, all types of bulbs (including satilights) and the power cable. Refer to proposal.

This product complies with safety standards EN60598-1 and EN60598-2-20.

### Environmental Report

Total surface area :	308.25 m <sup>2</sup>
Surface area :	178.26 m <sup>2</sup>
Rhó (Air) :	2.707 lb/m <sup>3</sup>
Cx estimated :	0.41
SCx :	133.78
Equivalent CO <sub>2</sub> :	2105.73 lb*

\* Environmental Impact for 8 hours ignition during 60 days.

The product information are provided for information only and are subject to changes.

4 mai 2018 5:00 PM | 201805 (us) | visual range only |



# PRODUCT SPECS

## Paquet Cadeau Enchanté 9.84m

SP9325

### Technical Data

Tension	120/24 V
Power	233 W
Class / IP	Classe II / IP54
Weigh (lb)	176.8 lb
Dimensions W x H x D	8.85 x 9.84 x 1.64 ft
Type of cable	PVC
Connecting	UL Plug & Light
Alimentation (non inclus)	061221 (UL) or 032371 (Europe)
Number of fastenings	-
Fastening types	On floor
Main material	Aluminium
Extendable	-
Cable color	-
Animation	Glittering
Animator	-
Technology	LED
Bright points (light)	2884
BP/Power Ratio	12.38
Luminosity (Lumen)	9373
Colors	Warm White
Dominant color	Warm White
Decorative material	Gold carpet
Conditioning	Recycled film
Type	Luminous decor
Class	specific
Brand	Leblanc



### Technical diagram



### Decor 3D AP 'Paquet cadeau Echantée 9.84ft' 8.85 x 9.84 x 1.64 ft LED glittering 120/24 V

DECORATIONS ARE DELIVERED WITH THEIR FIXATIONS. The ornamental balls, the chains are not included and every type of bulbs (including satlights). Refer to the catalog.

This product complies with safety standards EN60598-1 and EN60598-2-20.



### Environmental Report

Total surface area :	13.3 <sup>m²</sup>
Surface area :	6.9 <sup>m²</sup>
Rhò (Air) :	2.707 lb/ft <sup>3</sup>
Cx estimated :	0.41
SCx :	53.12
Equivalent CO <sub>2</sub> :	1612 lb*

\* Environmental impact for 8 hours ignition during 60 days.



www.leblanc-illuminations.fr Groupe Leblanc® | 6-8 rue Michaël Faraday | 72027 Le Mans Cedex 2 | France  
Standard | Tél. +33 (0)2 43 61 43 61 - email : contact@groupe-leblanc.com

The product information are provided for information only and are subject to change.

11 mai 2018 9:11 PM | sp9325 (us) | visual range only |

# PRODUCT SPECS

## Etoile Enchantée

SP8942

### Technical Data

Tension	120/24V
Power	116 W
Class / IP	Classe II / IP54
Weigh (lb)	103.87 lb
Dimensions W x H x D	7.87 x 5.9 x 0.98 ft
Type of cable	PVC
Connecting	UL Plug & Light
Alimentation (not included)	061221 (UL) or 032371 (Europe)
Fastening types	On floor
Main material	Aluminium
Extendable	-
Cable color	-
Animation	Glittering
Animator	-
Technology	LED
Bright points (light)	1300
BP/Power Ratio	11.21
Luminosity (Lumen)	4225
Colors	Cold white and warm white
Dominant color	Warm White
Sockets number	-
Sockets type	-
Bulbs	-
Decorative material	Gold carpet
Conditioning	Recycled film
Type	Luminous decor
Class	specific

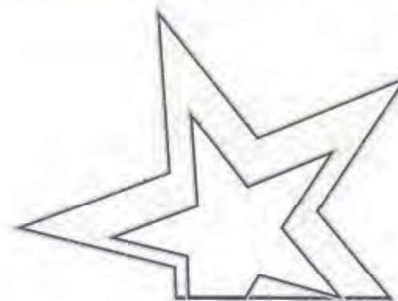


Leblanc

[www.leblanc-illuminations.fr](http://www.leblanc-illuminations.fr) Groupe Leblanc® | 6-8 rue Michaël Faraday | 72027 Le Mans Cedex 2 | France  
Standard | Tel. +33 (0)2 43 61 43 61 - email : [contact@groupe-leblanc.com](mailto:contact@groupe-leblanc.com)



### Technical diagram



Decor 3D 'Etoile enchanté' W: 7.87 H: 5.9 D: 0.98 ft LED white/Warm White Glittering white 24V

THE DESIGNS ARE SUPPLIED WITH THEIR ATTACHMENTS. Not included: decorative balls, chains, all types of bulbs (including satllights) and the power cable. Refer to proposal.

Conditioned by 1 under 1 Recycled Polyethylene from 7.87 x 5.9 x 0.98 ft of 103.87 lb.

This product complies with safety standards EN60598-1 and EN60598-2-20.

### Environmental Report

Total surface area :	6.39 m <sup>2</sup>
Surface area :	1.38 m <sup>2</sup>
Rhò (Air) :	2.707 lb/ft3
Cx estimated :	0.41
SCx :	0.17
Equivalent CO <sub>2</sub> :	426.55 lb*

\* Environmental impact for 8 hours ignition during 60 days.

The provided information are indicative or information only, and are subject to change.

Modèle de base (non fini) - Prototype / Miroir / All other prices are

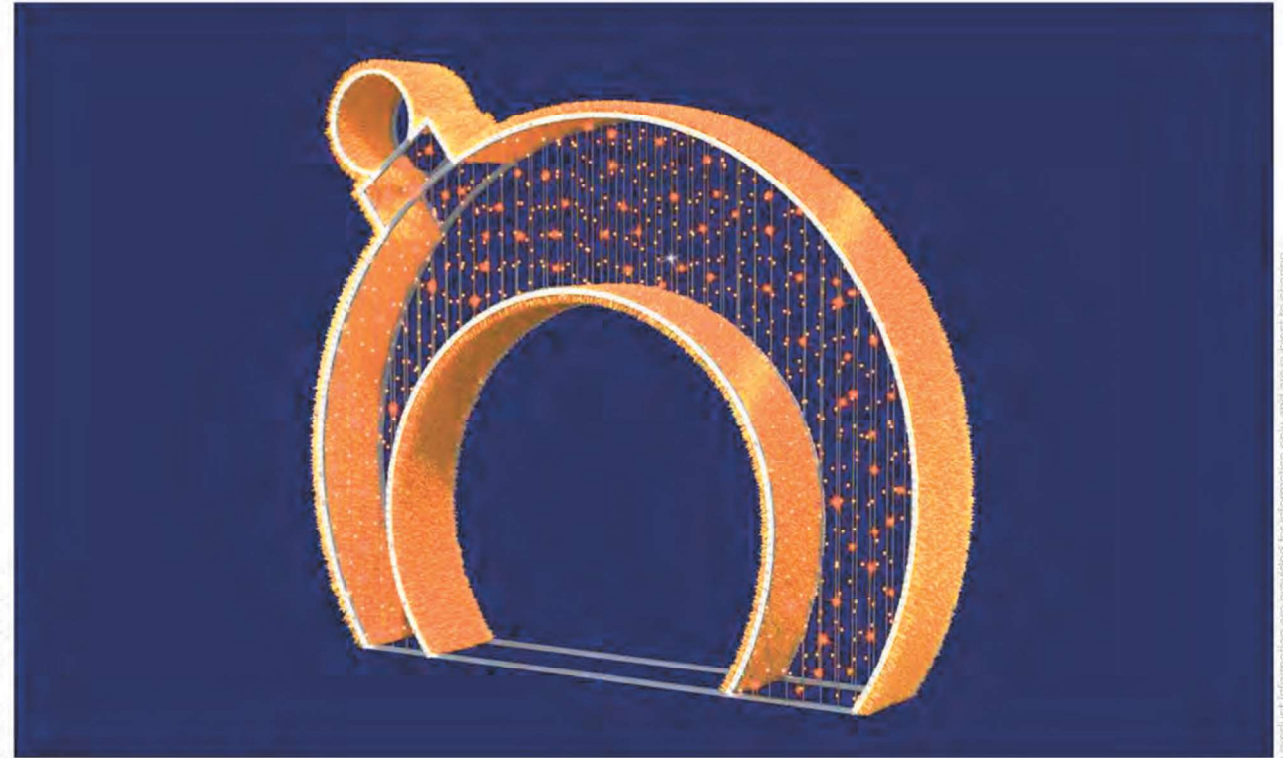
# PRODUCT SPECS

## Boule Enchantée

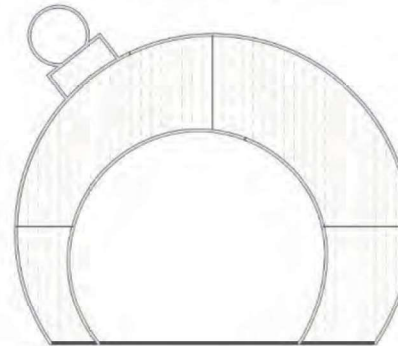
SP8943

### Technical Data

Tension	110/24V or 230/24 V
Power	116 W
Class / IP	Classe II / IP54
Weigh (lb)	99.45 lb
Dimensions W x H x D	7.54 x 6.56 x 0.98 ft
Type of cable	PVC
Connecting	UL Plug & Light
Alimentation (non inclus)	061221 (UL) ou 032371 (Europe)
Fastening types	On floor
Main material	Aluminium
Extendable	-
Cable color	-
Animation	Glittering
Animator	-
Technology	LED
Bright points (light)	1090
BP/Power Ratio	9.4
Luminosity (Lumen)	3543 lm
Colors	Cold white & warm white
Dominant color	Warm White
Decorative material	Gold carpet
Conditioning	Recycled film
Type	Luminous decor
Class	specific
Brand	Leblanc



### Technical diagram



Decor 3D 'Boule enchanté' H: 6.56 L: 7.54 P: 0.98 ft LED white/Warm White glittering white 24V

THE DESIGNS ARE SUPPLIED WITH THEIR ATTACHMENTS. Not included: decorative balls, chains, all types of bulbs (including satilights) and the power cable. Refer to proposal.

Conditioned by 1 under 1 Recycled Polyethylene from 7.54 x 6.56 x 0.98 ft for a total weigh of 99.45 lb.

This product complies with safety standards EN60598-1 and EN60598-2-20.

### Environmental Report

Total surface area :	4.28 <sup>m2</sup>
Surface area :	2.23 <sup>m2</sup>
Rhò (Air) :	2.707 lb/ft3
Cx estimated :	0.41
SCx :	0.28
Equivalent CO <sub>2</sub> :	408.87 lb*

\* Environmental impact for 8 hours ignition during 60 days.



www.leblanc-illuminations.fr Groupe Leblanc® | 6-8 rue Michaël Faraday | 72027 Le Mans Cedex 2 | France  
Standard | Tel. +33 (0)2 43 61 43 61 - email : contact@groupe-leblanc.com

The product information are provided for information only and are subject to change.

© mai 2018 10:35 AM | sp8943 (us) | visual range only |

# PRODUCT SPECS

## Renne Enchanté

SP9166

### Technical Data

Tension	110/24V or 120/24 V
Power	121 W
Class / IP	Classe II / IP54
Weigh (lb)	106.08 lb
Dimensions W x H x D	4.59 x 6.4 x 0.98 ft
Type of cable	PVC
Connecting	UL
Alimentation (non inclus)	061221 (UL) or 032371 (Europe)
Fastening types	On floor
Main material	Aluminium
Extendable	-
Cable color	-
Animation	Glittering
Animator	-
Technology	LED
Bright points (light)	1150
BP/Power Ratio	9.5
Luminosity (Lumen)	3738
Colors	Cold white et Warm White
Dominant color	Warm White
Sockets number	-
Sockets type	-
Bulbs	-
Decorative material	Gold carpet
Conditioning	Recycled film
Type	Luminous decor
Class	specific
Brand	Leblanc

### Environmental Report

Total surface area :	2.76 m <sup>2</sup>
Surface area :	1.43 m <sup>2</sup>
Rh $\rho$ (Air) :	2.707 lb/m <sup>3</sup>
Cx estimated :	0.41
SCx :	0.18
Equivalent CO <sub>2</sub> :	435.88 lb*

\* Environmental impact for 8 hours ignition during 60 days.

### Technical diagram



Decor 3D 'Renne enchanté' H: 6.4 W: 4.59 D: 0.98 ft  
LED white/Warm White glittering white 24V

THE DESIGNS ARE SUPPLIED WITH THEIR ATTACHMENTS. Not included: decorative balls, chains, all types of bulbs (including satillights) and the power cable. Refer to proposal.

Conditioned by 1 under 1 Recycled Polyethylene from 4.59 x 6.4 x 0.98 ft for a total weigh of 106.08lb.

This product complies with safety standards EN60598-1 and EN60598-2-20.



www.leblanc-illuminations.fr Groupe Leblanc® | 6-8 rue Michaël Faraday | 72027 Le Mans Cedex 2 | France  
Standard | Tél. +33 (0)2 43 61 43 61 - email : contact@groupe-leblanc.com

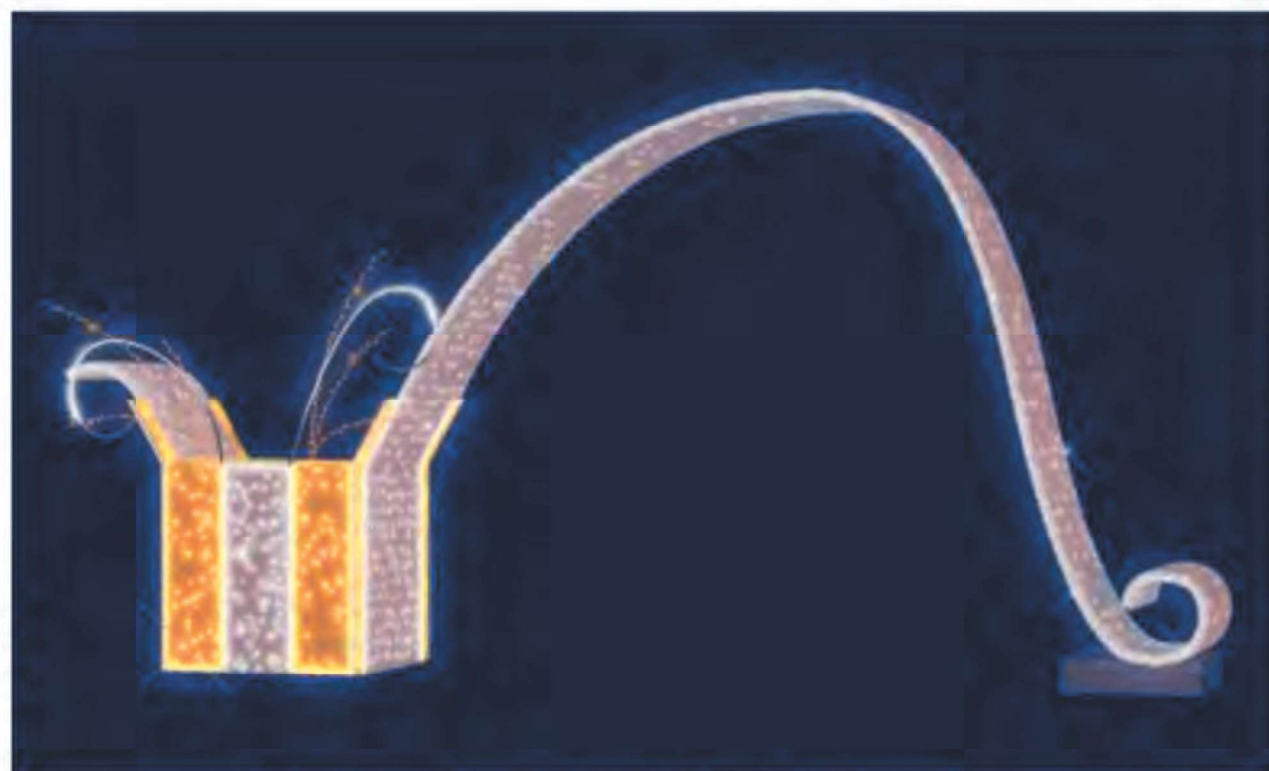
# PRODUCT SPECS

## Cadeau ruban or

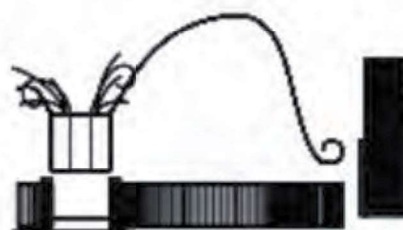
203308-24V

### Technical Data

Tension	24 V
Power	467 W
Class / IP	Class II / IP64
Weight (kg)	84 kg
Size H x L x D	6.3 x 3 x 1 m
Type of cable	Rubber
Connecting	European Plug
Number of fastenings	Mounting brackets
Fastening types	on floor
Main material	Aluminium
Extendable	-
Cable color	Translucent
Animation	Glittering & drop
Technology	LED
Bright points (light)	-
BP/Power Ratio	-
Luminosity (Lumen)	-
Colors des pts lum.	Warm White et cold white
Dominant color diurne	Champagne
Decorative material	Carpet champagne - white carpet
Conditioning	Recycled polyethylene
Type	Luminous Decoration
Class	3D
Brand	Leblanc



### Technical diagram



3D decoration Cadeau ruban or H:6,3 - L:3 - d:1 M LEDWARM WHITE & COLD WHITE Animated 230/24V

Packaging :

Packaging 1.

THE DESIGNS ARE SUPPLIED WITH THEIR ATTACHMENTS.  
Not included: decorative balls, chains, all types of bulbs (including satellites). Refer to proposal.



### Environmental Report

Total surface area	18.9 m <sup>2</sup>
Surface area	m <sup>2</sup>
Rfcd (Air)	1.225 kg/m <sup>3</sup>
Cx estimated	0.41
SCx	-
Equivalent CO <sub>2</sub>	356.17 kg*

\* Environmental impact for 8 hours operation during 60 days.



www.leblanc-illuminations.fr Groupe Leblanc® | 6-8 rue Michail Faraday | 72007 La Mare Cedex 2 | France  
Standard Tel: +33 (0)2 43 81 43 81 - email: contact@groupe-leblanc.com

## PRODUCT SPECS



- **Professional/Commercial Grade**
- **Brand:** Pro Christmas™
- **Bulb Design:** C9, Faceted, high strength, impact resistant lens
- **Bulb Color:** Warm White
- **Color Temperature:** 2600 Kelvin
- **Light Action:** Steady; Dimmable
- **Base Size:** Intermediate C9 / E17
- **Bulb Base:** Nickel, prevents corrosion
- **Bulb Housing:** High-strength polycarbonate with diamond facets for maximum illumination
- **Lumens:** 21.7
- **Technology:** 1 SMD LED with 2 embedded chips
- **Lens Height:** 2 1/4", Total Height 3 1/4"
- **Lens Diameter:** 1 1/8"
- **Average Bulb life:** 60,000 hours
- **Voltage:** 120
- **Rated Watts:** 0.8
- **Actual Watts:** 0.56
- **IP Rating:** IP 65
- **UL Rating:** For Indoor/Outdoor Use
- **Warranty:** 3 Seasons\*

## PRODUCT SPECS



- **Brand:** Pro Christmas™
- **Bulb Style:** 5 mm Wide Angle Conical
- **Bulb Count:** 50
- **Bulb Color:** 2800K Warm White
- **Light Set Series:** Professional/Commercial Grade
- **Bulb/Socket Design:** One Piece, non removeable. Prevents dirt and moisture from damaging and corroding the lighting system.
- **Bulb Life:** 75,000 hrs
- **Bulb Spacing:** 6"
- **Bulb Dimensions:** 1/4" h x 3/16" w
- **Socket Dimensions:** 11/16" h x 5/16" w
- **Overall Dimensions:** 15/16" h x 5/16" w
- **Wire Color:** Green
- **Wire Gauge:** 22 Gauge
- **Rectifier:** Full Wave Rectified - Specially designed inline, double injected molded - double sealed against the elements. Prevents bulbs from flickering during illumination.
- **Light Set Length:** 25'
- **Lead Length:** 6"
- **Tail Length:** 6"
- **Connector Type:** End to End Connector - Up to 60 sets can be connected end to end and plugged into one extension cord or outlet.
- **Plug Type:** Stackable, fused. Standard 2-prong plug. Works with any standard 110/120 volt outlet. No adapter required.
- **UL Rated:** Yes, for indoor or outdoor use.
- **Watts Per Set:** 3.45 Watts
- **Amps Per Set:** .04 Amps
- **Voltage:** 120 Volts
- **Max # of Sets Connected Together:** 60
- **Warranty:** 3 Season Warranty

## PRODUCT SPECS

### COMMERCIAL GREENERY:



#### 48" Deluxe Oregon Fir Wreath, Lit with Warm White LEDs

- **Not Battery Operated.**
- Fully lit straight out of the box
- Low Energy Usage 5 mm wide angle conical lights for maximum illumination. Uses 90% less electric than traditional incandescent light sets.
- LED Bulbs utilize 1 piece construction to prevent moisture from entering the bulbs. Each LED is rated for 75,000 hours of use.
- Commercial quality wreath will look great for many years to come.
- Perfect for indoor or outdoor use.
- Thick, lush greenery for added realism.
- Customize it by adding ribbons and/or ornaments
- **Foldable Frame**
- **Inner Diameter: 20"**
- **Number of tips: 560**
- **Number of bulbs: 200**
- **Number of light sets: 4**
- **Lead Length: 6"**



PRODUCT SPECS



## PRODUCT SPECS



### Patented Ceramic technology

Reduces thermal resistance, promotes light efficiency

#### Benefits from Sansi's Patented Technology

- High brightness
- Super-Long lifespan
- Lower energy costs
- Energy-Savings
- Ceramic Heat Dissipation
- Ceramic material, Anti-corrosive

# OPTIONS AND THEMES

TO GIVE A SENSE OF FEEL TO THE OVERALL DISPLAY DESIGN - DECOR ITEMS CHOSEN WILL VARY

## CANDY CANE



## FROZEN



## GLITZ & GLAM



## TRADITIONAL



## ENCHANTED FOREST





**THANK YOU!**

**We look forward to bringing your idea to life!**

DISCLOSURE: all renderings and visions are IP of TCK and is not to be disclosed to any persons outside of your organization. Designs are free of charge but must not be distributed to others