

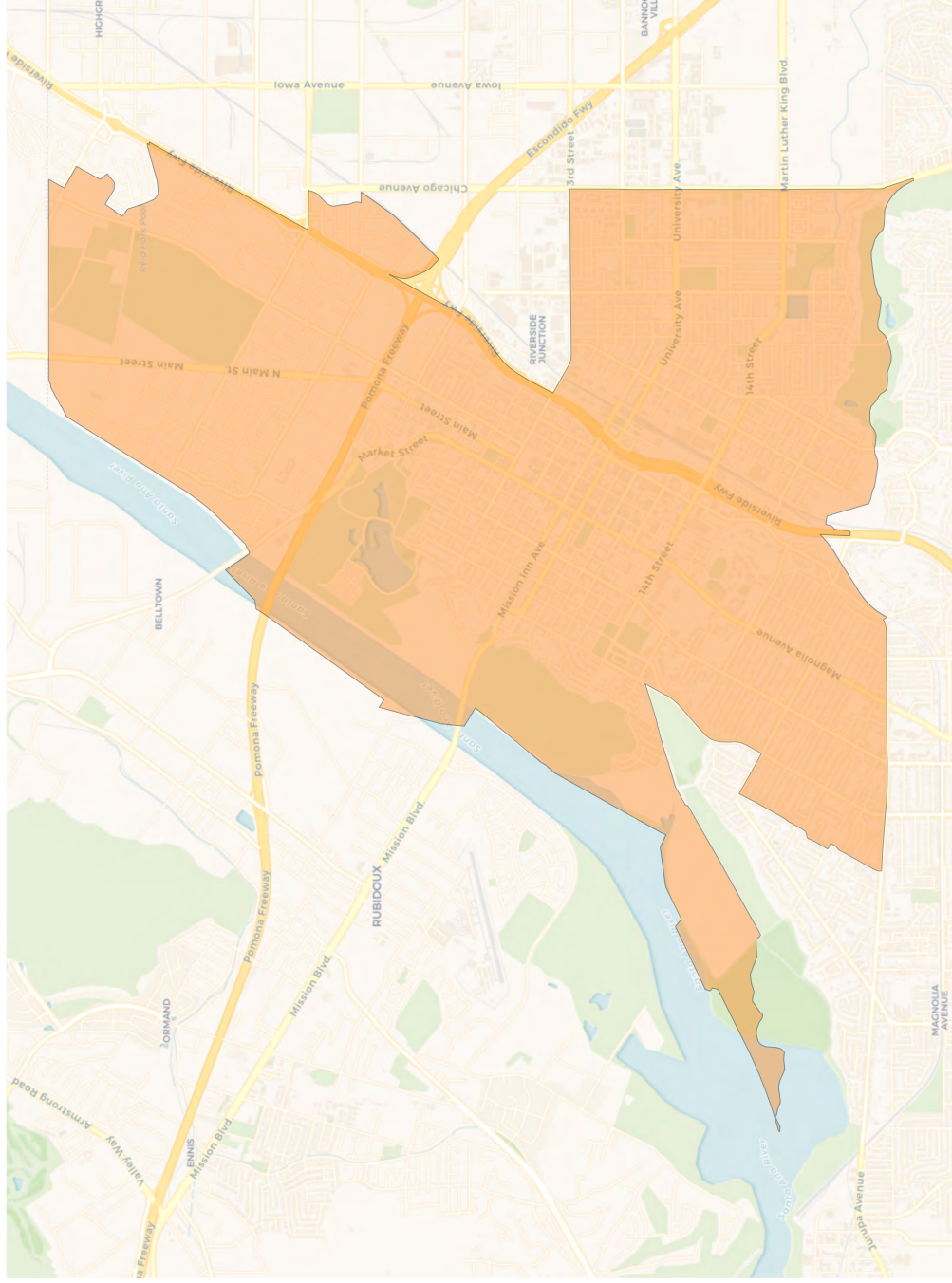
2020 Census

	1	2	3	4	5	6	7
Population	46,976	44,392	44,807	43,943	46,168	44,846	45,313
Deviation	1,770	-814	-399	-1,263	962	-360	107
Deviation %	3.9%	-1.8%	-0.9%	-2.8%	2.1%	-0.8%	0.2%
Other	12,414	18,719	17,412	21,512	12,579	8,706	10,347
Other %	26.4%	42.2%	38.9%	49.0%	27.2%	19.4%	22.8%
Latino	29,481	15,458	23,690	13,954	28,963	31,999	29,612
Latino %	62.8%	34.8%	52.9%	31.8%	62.7%	71.4%	65.3%
Asian	1,737	6,217	1,413	5,333	2,345	2,188	3,224
Asian %	3.7%	14.0%	3.2%	12.1%	5.1%	4.9%	7.1%
Black	3,344	3,998	2,292	3,144	2,281	1,953	2,130
Black %	7.1%	9.0%	5.1%	7.2%	4.9%	4.4%	4.7%

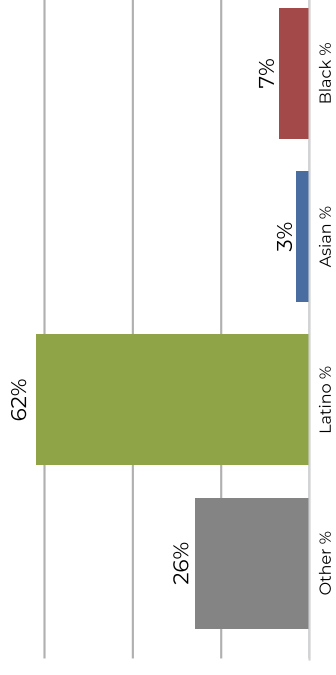
Citizen Voting Age Population (CVAP)

	1	2	3	4	5	6	7
Total CVAP	29,154	33,120	31,259	33,227	32,626	26,521	30,817
Other CVAP	9,602	14,687	15,023	17,457	12,400	7,202	9,590
Other CVAP %	32.9%	44.3%	48.1%	52.5%	38.0%	27.2%	31.1%
Latino CVAP	15,906	11,678	13,598	8,669	16,408	16,102	16,804
Latino CVAP %	54.6%	35.3%	43.5%	26.1%	50.3%	60.7%	54.5%
Asian CVAP	1,297	4,385	898	4,370	1,529	1,569	2,822
Asian CVAP %	4.4%	13.2%	2.9%	13.2%	4.7%	5.9%	9.2%
Black CVAP	2,349	2,370	1,740	2,731	2,289	1,648	1,601
Black CVAP %	8.1%	7.2%	5.6%	8.2%	7.0%	6.2%	5.2%

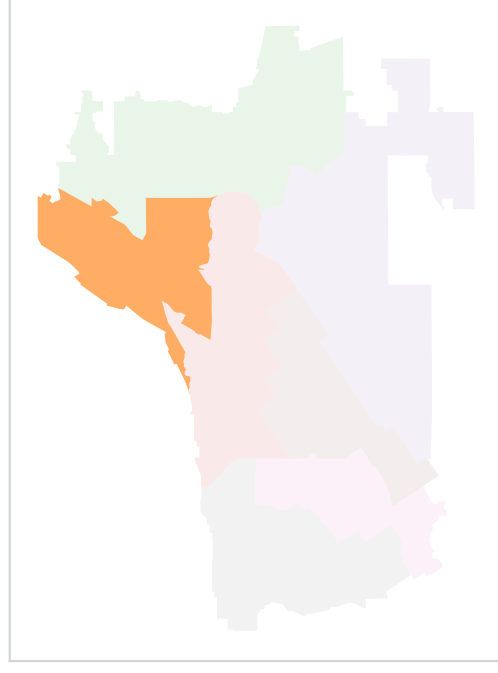
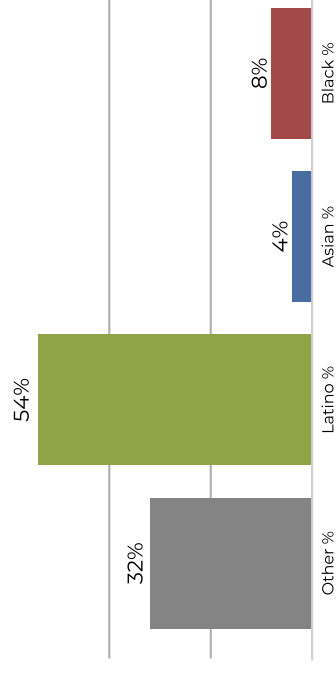
Ward 1



2020 Census



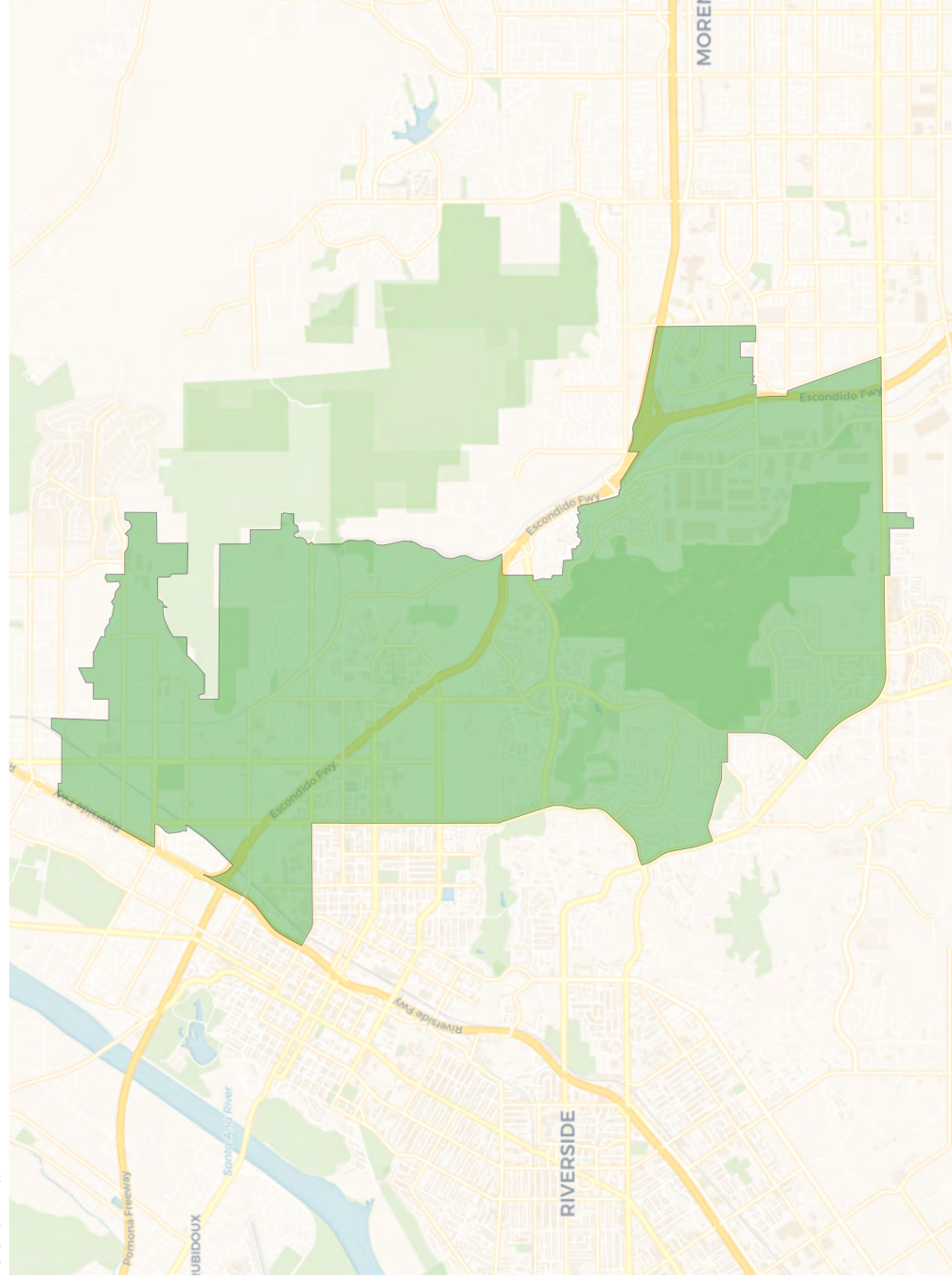
Citizen Voting Age Population



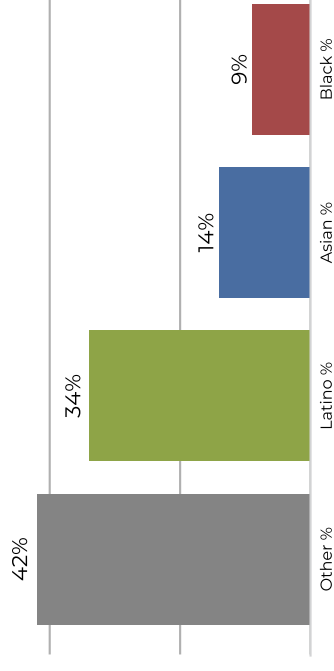
Population	Deviation	Deviation %	Other	Other %	Latino	Latino %	Asian	Asian %	Black	Black %
46,976	1,770	3.9%	12,414	26.4%	29,481	62.8%	1,737	3.7%	3,344	7.1%
Total CVAP	9,602	32.9%	15,906	54.6%	1,297	4.4%	2,349	8.1%		

Other CVAP	Latino CVAP	Asian CVAP	Black CVAP
9,602	15,906	1,297	2,349

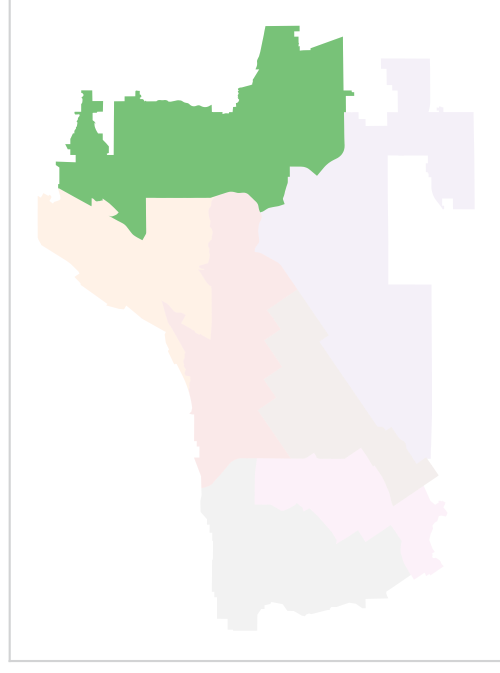
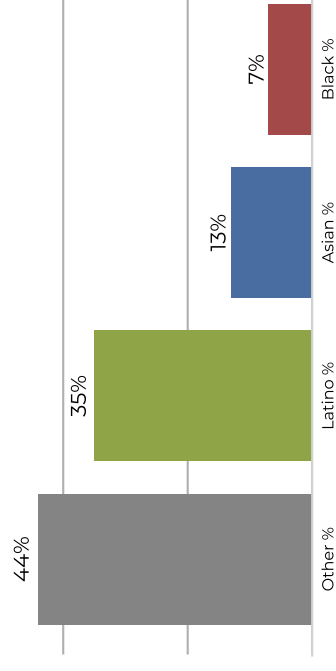
Ward 2



2020 Census

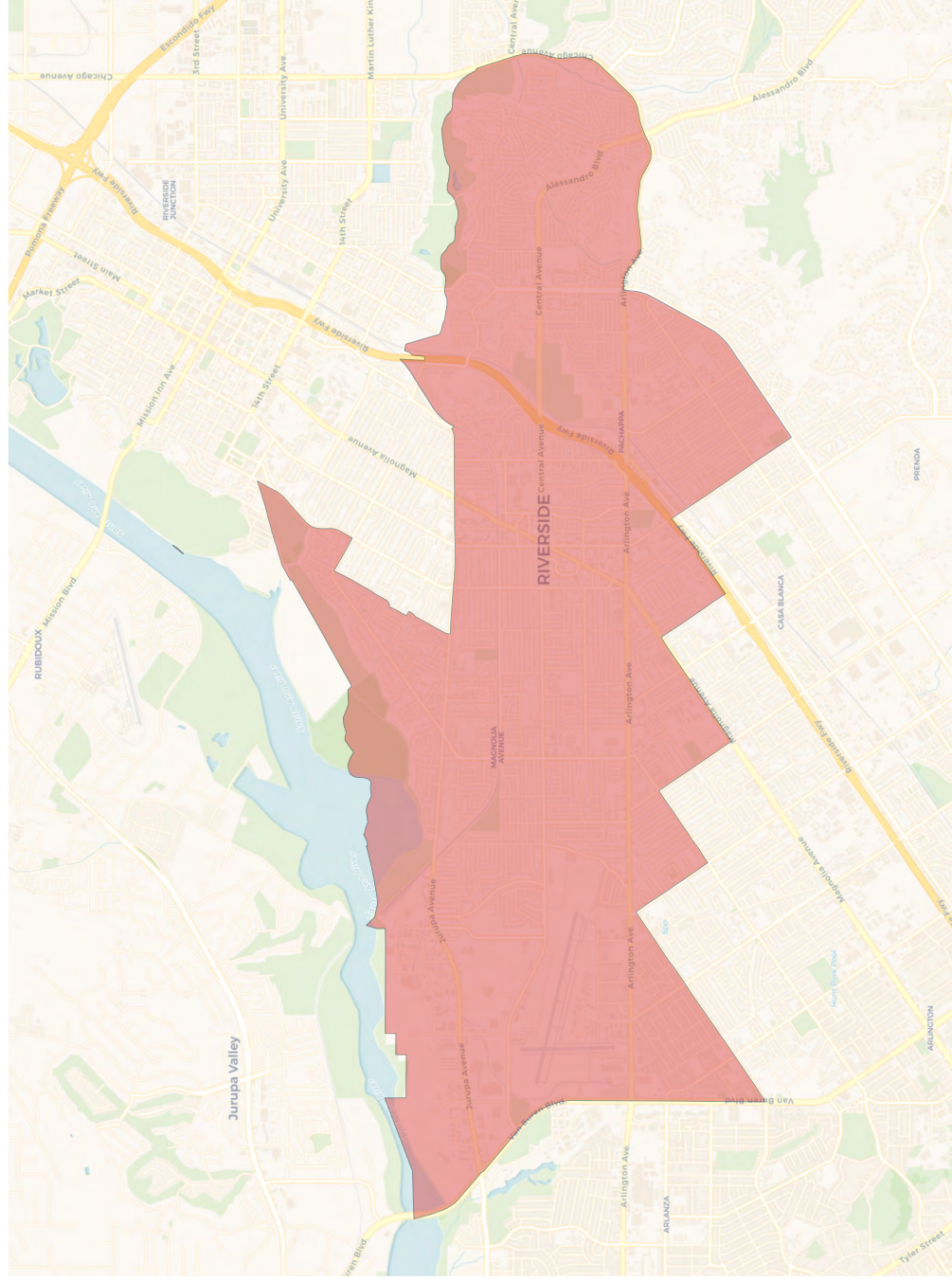


Citizen Voting Age Population

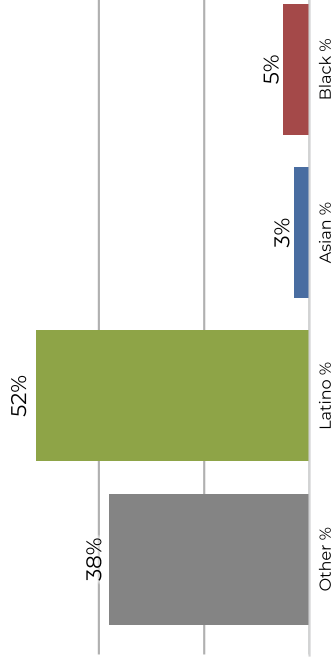


Population	Deviation	Deviation %	Other	Latino	Latino %	Asian	Asian %	Black	Black %
44,392	-814	-1.8%	18,719	15,458	34.8%	6,217	14.0%	3,998	9.0%
Total CVAP	Other CVAP	Deviation %	Latino CVAP	Asian CVAP	Latino % CVAP	Asian % CVAP	Black CVAP	Black % CVAP	Black % CVAP
33,120	14,687	44.3%	11,678	4,385	35.3%	4,385	2,370	7.2%	7.2%

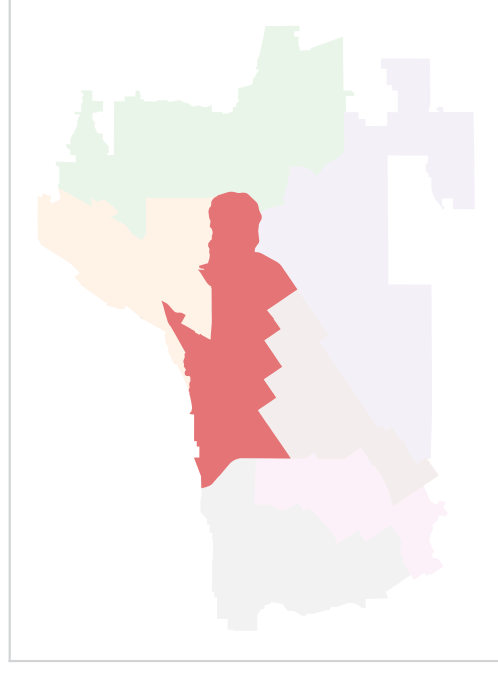
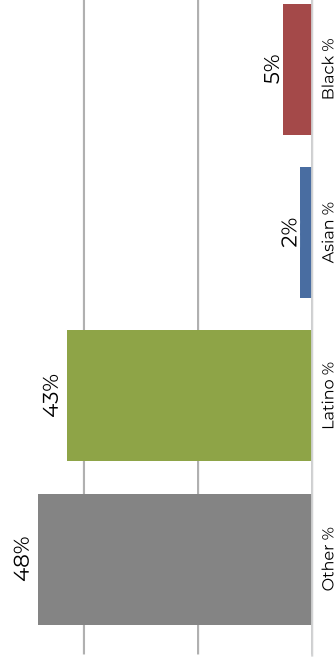
Ward 3



2020 Census

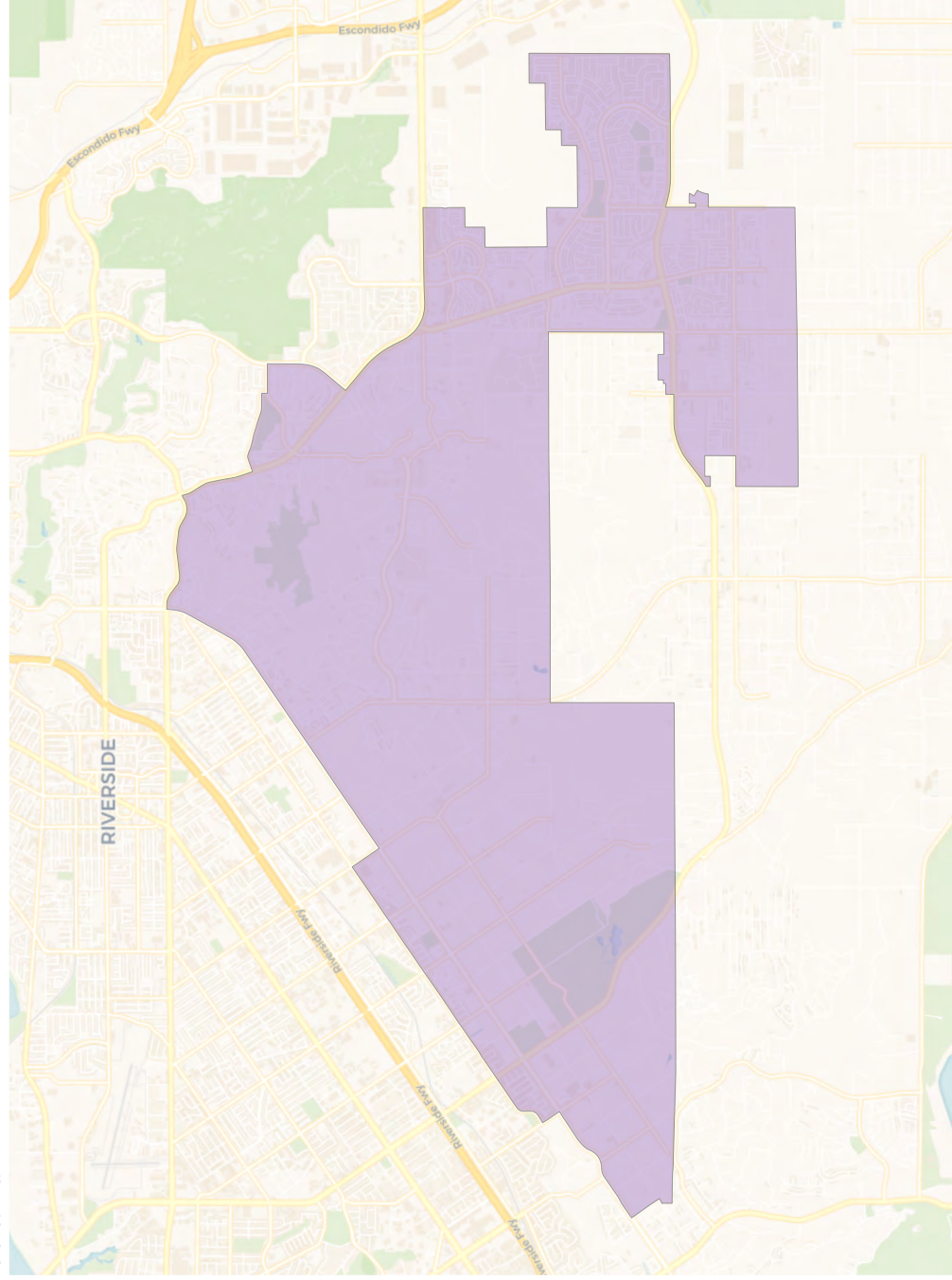


Citizen Voting Age Population

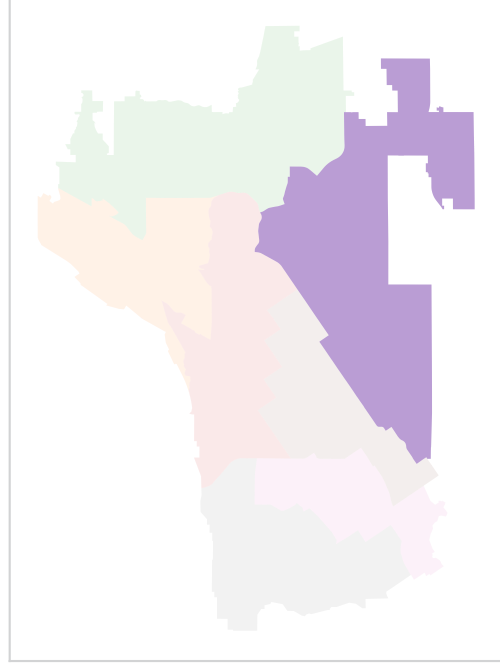
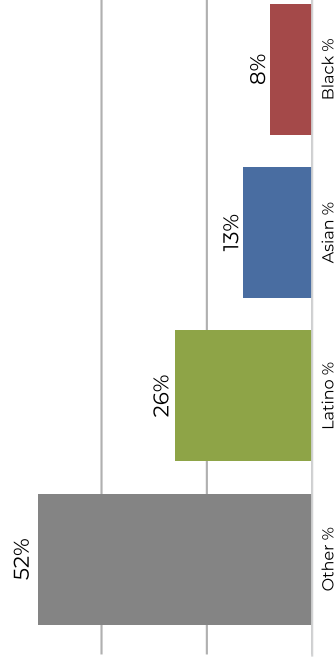
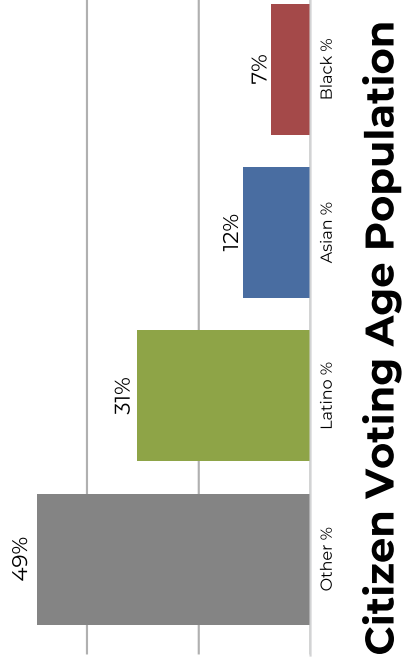


Population	Deviation	Deviation %	Other	Other %	Latino	Latino %	Asian	Asian %	Black	Black %
44,807	-399	-0.9%	17,412	38.9%	23,690	52.9%	1,413	3.2%	2,292	5.1%
Total CVAP	Other CVAP	Other CVAP %	Latino CVAP	Latino CVAP %	Asian CVAP	Asian CVAP %	Black CVAP	Black CVAP %		
31,259	15,023	48.1%	13,598	43.5%	898	2.9%	1,740	5.6%		

Ward 4

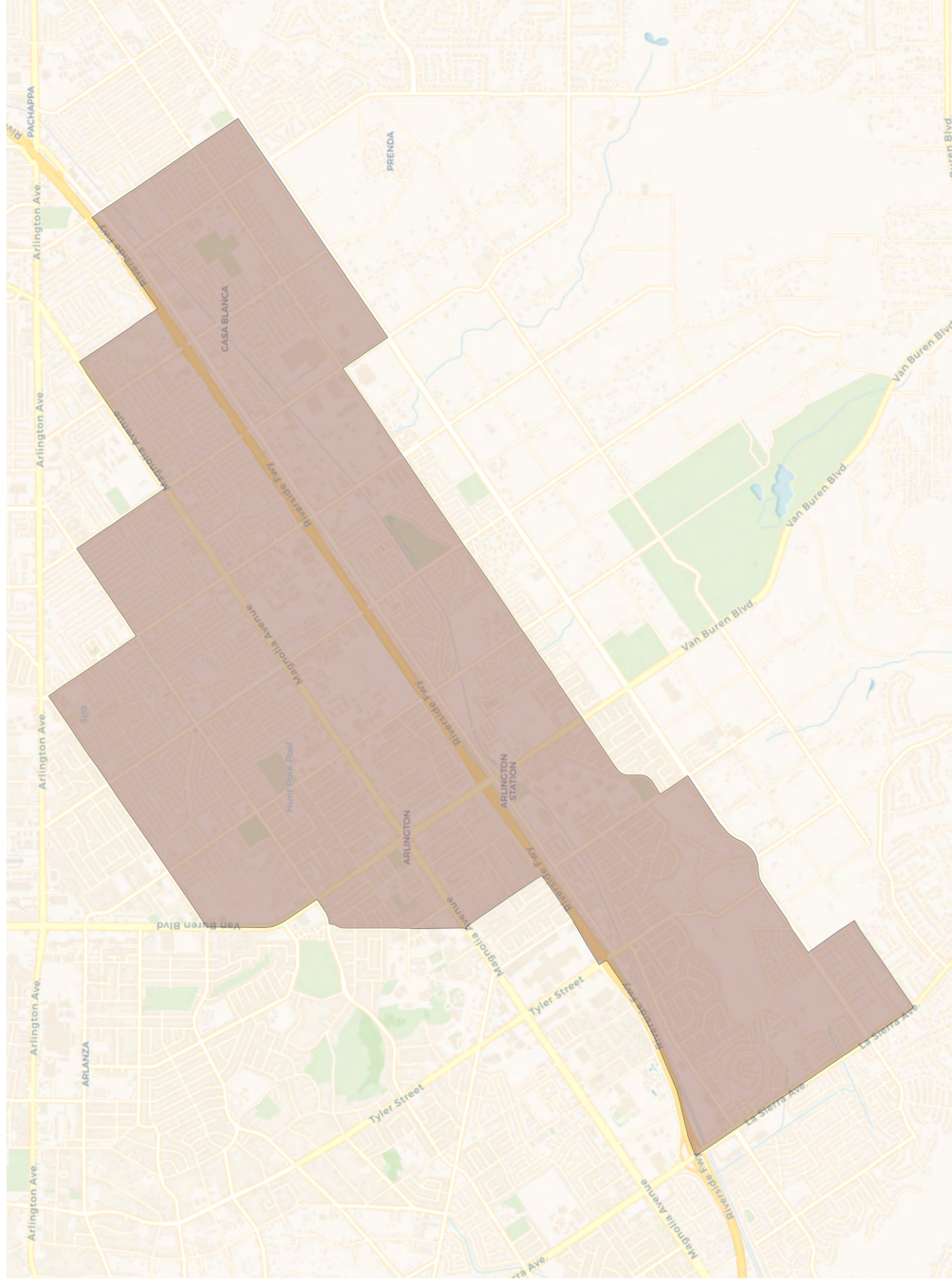


2020 Census

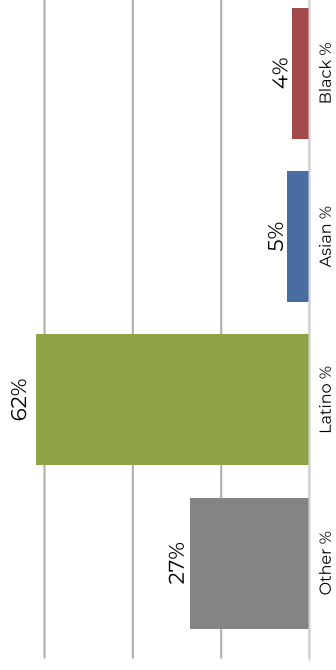


Population	Deviation	Deviation %	Other	Other %	Latino	Latino %	Asian	Asian %	Black	Black %
43,943	-1,263	-2.8%	21,512	49.0%	13,954	31.8%	5,333	12.1%	3,144	7.2%
Total CVAP	Other CVAP	Other CVAP %	Latino CVAP	Latino CVAP %	Asian CVAP	Asian CVAP %	Black CVAP	Black CVAP %		
33,227	17,457	52.5%	8,669	26.1%	4,370	13.2%	2,731	8.2%		

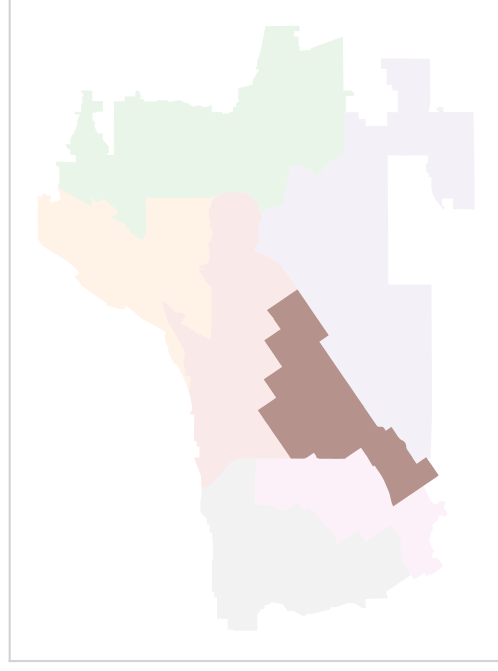
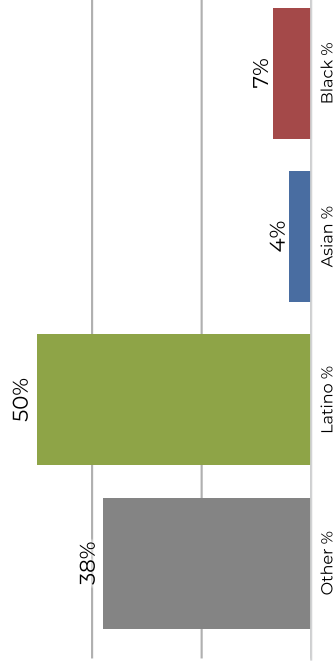
Ward 5



2020 Census

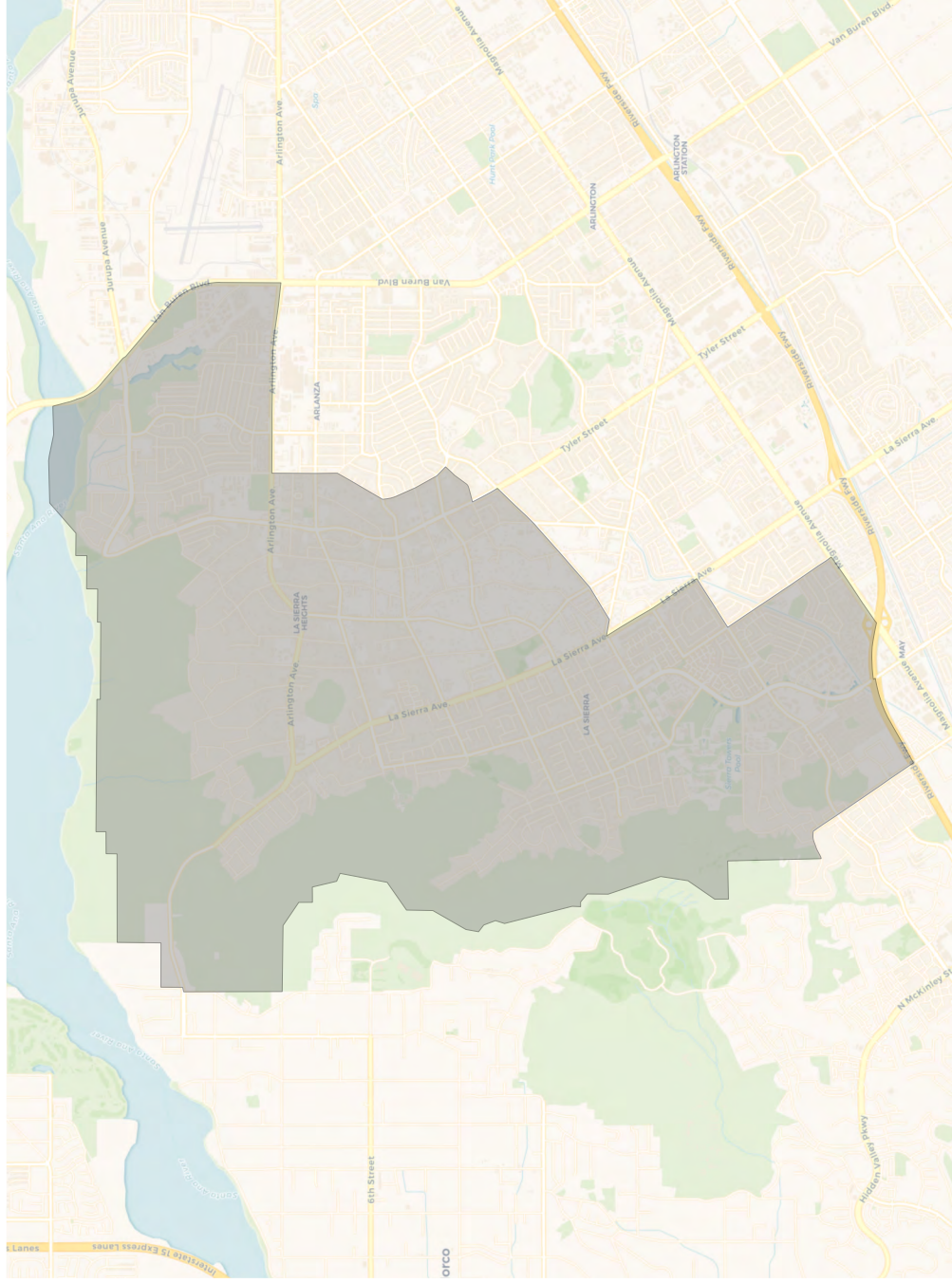


Citizen Voting Age Population

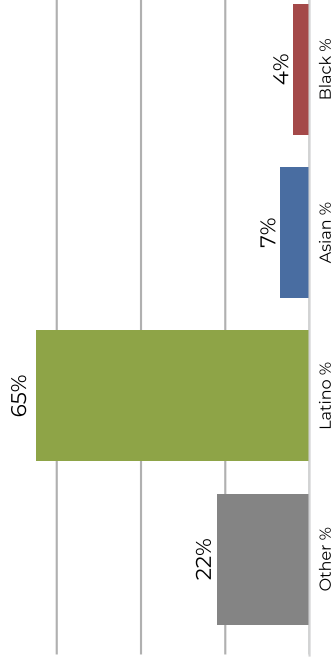


Population	Deviation	Deviation %	Other	Other %	Latino	Latino %	Asian	Asian %	Black	Black %
46,168	962	2.1%	12,579	27.2%	28,963	62.7%	2,345	5.1%	2,281	4.9%
Total CVAP	Other CVAP	Other CVAP %	Latino CVAP	Latino CVAP %	Asian CVAP	Asian CVAP %	Black CVAP	Black CVAP %	Black CVAP %	Black CVAP %
32,626	12,400	38.0%	16,408	50.3%	1,529	4.7%	2,289	7.0%	7.0%	

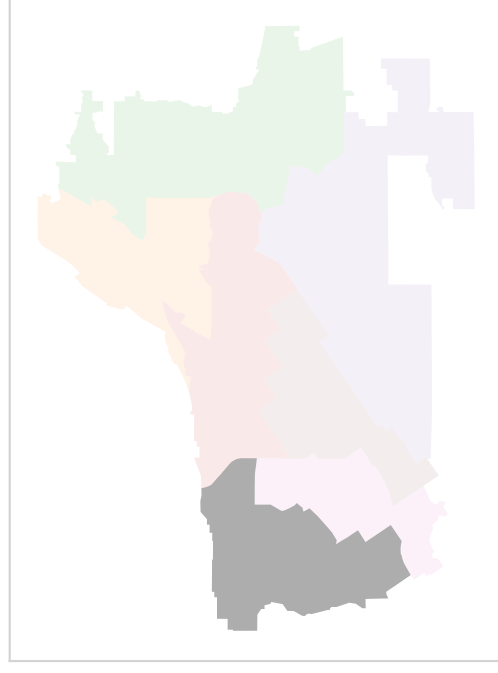
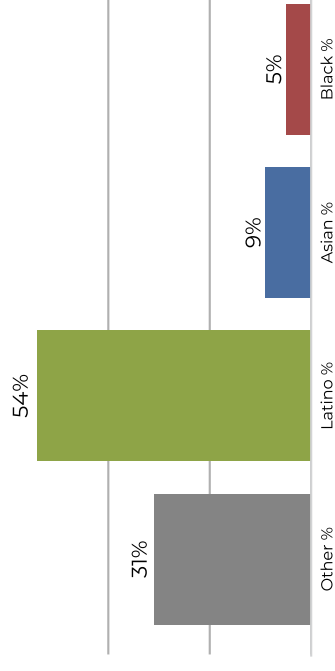
Ward 7



2020 Census



Citizen Voting Age Population



Population	Deviation	Deviation %	Other	Other %	Latino	Latino %	Asian	Asian %	Black	Black %
45,313	107	0.2%	10,347	22.8%	29,612	65.3%	3,224	7.1%	2,130	4.7%
Total CVAP	Other CVAP	Other CVAP %	Latino CVAP	Latino CVAP %	Asian CVAP	Asian CVAP %	Black CVAP	Black CVAP %	Latino CVAP	Black CVAP %
30,817	9,590	31.1%	16,804	54.5%	2,822	9.2%	1,601	5.2%		