



DEFENSIBLE SPACE/FIRE PREVENTION

**Parks, Recreation and Community Services
Department**

Park and Recreation Commission
August 18, 2025

DEFENSIBLE SPACE

- Creating space between your home and flammable vegetation is crucial.
 - **Zone 0 (0-5 feet):** Non-combustible materials only.
 - **Zone 1 (5-30 feet):** Reduce fuel, create separation.
 - **Zone 2 (30-100+ feet):** Thin trees, mow grass, remove dead material.
- Defensible space:
 - Reduce fire risk
 - Provide firefighters with safe access
 - Improve community survival chances

[Link: DEFENSIBLE SPACE](#)



WHY IS FIRE PREVENTION ESSENTIAL

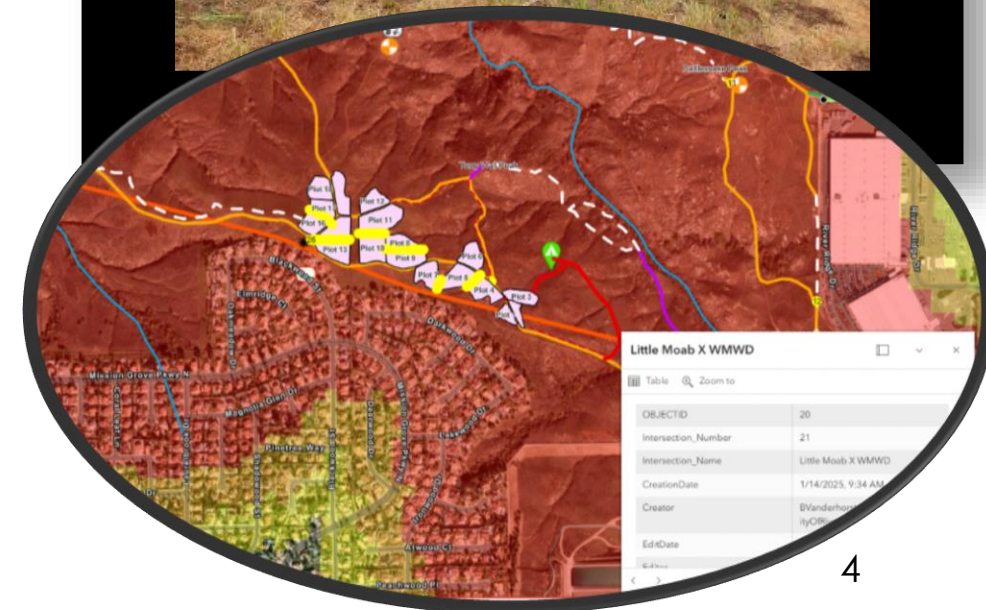
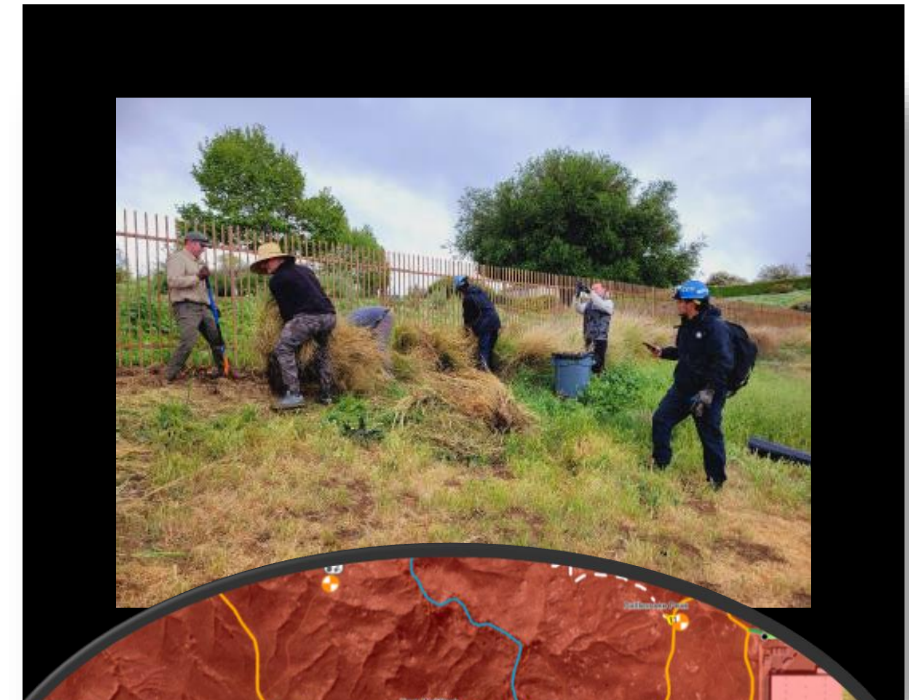
- California faces a growing wildfire crisis; Riverside is especially vulnerable.
- Protecting lives, homes, businesses, and infrastructure is our top priority.
- Prevention saves money: Every \$1 invested avoids many more in fire suppression and recovery.



INTEGRATED STRATEGY

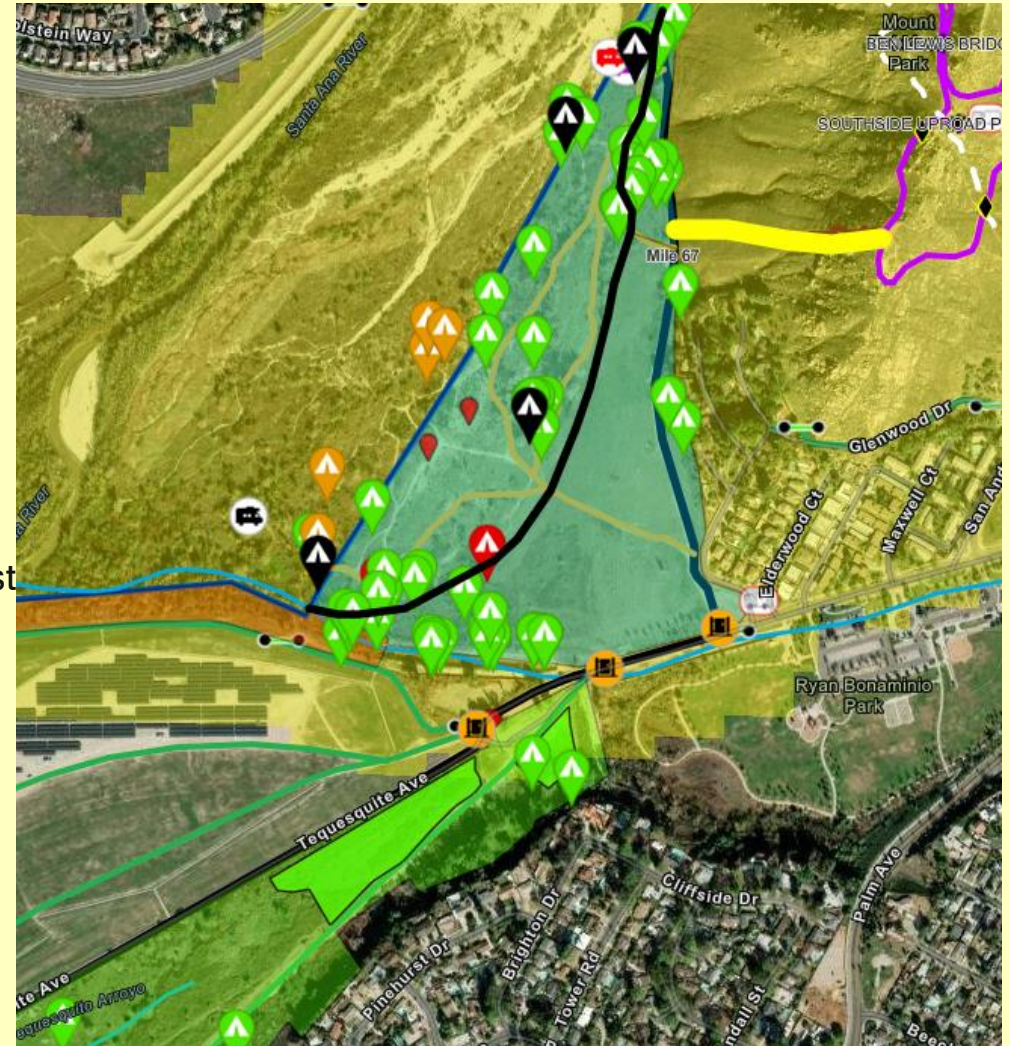
- We protect our community through:
 - **Defensible Space Management:** Creating protective buffer zones.
 - **Strategic Vegetation Management:** Removing hazardous fuels.
 - **Community Engagement:** Empowering residents to act.
 - **Data-Driven Decisions:** Using technology for efficient resource allocation.
 - **Interagency Collaboration:** Partnering with the Fire Department and other agencies.
- These efforts combine for maximum impact.

Defensible Space				Mowing		Chemical Application			Hand Work	
Site	Site Description	Date Sched	Date Comp. 1	Date Comp. 2	Acres	Date Sched	Date Comp. 1	Date Comp. 2	Date Sched	Date Comp. 1
Mt. Vernon	Mt. Vernon 4 - Residential Structures (Need to complete)	Mt. Vernon	5/27/2025		1.2		7/1/2025			5/27/2025
Mt. Vernon	Mt. Vernon 1 - Residential Structures		5/27/2025		0.4		7/2/2025			5/27/2025
Mt. Vernon	Mt. Vernon 2 - Residential Structures		5/27/2025		0.3		7/3/2025			5/27/2025
Mt. Vernon	Mt. Vernon 3 - Residential Structures		5/27/2025		0.7		7/4/2025			5/27/2025
Hole Lake	Bradford St / Alabama St. - Residential Structures		5/14/2025		0.89	7/8/2025	6/15/2025			5/21/2025
Hole Lake	Parker Way - Residential Structures		5/15/2025		0.87	7/9/2025	6/16/2025			5/21/2025
Hole Lake	Palos Dr. - Residential Structures		5/15/2025		1.6	7/11/2025	6/18/2025			5/21/2025
Hole Lake	Randolph St. / Mallard Rd. - Residential Structures		5/16/2025		0.94	7/12/2025	6/19/2025			5/21/2025
Hole Lake	Geranium Pl. / Begonia Cir. - Residential Structures		5/17/2025		1.2	7/13/2025	6/20/2025			5/21/2025
Victoria/Cross	Victoria/Cross	6/15/2025			1.3	7/16/2025	4/20/2025		4/27/2025	
Islander	Islander Hill	7/1/2025			0.4		7/1/2025			5/15/2025
Mission Ranch	Mission Ranch	7/1/2025			1.5	7/1/2025			6/1/2025	
Tequesquite	Tequisquite North / Bonaminio & Bike Trail	8/7/2025			33		4/20/2025			6/6/2025
Tequesquite	Tequesquite South Extension	8/7/2025	4/25/2025		52	7/7/2025	5/1/2025	6/15/2025	7/20/2025	6/15/2025
Fairmount	BOYSCOUT CAMP (GRANT #1)	9/14/2025				9/14/2025			9/14/2025	
Fairmount	BOYSCOUT CAMP (GRANT #2)	9/15/2025				9/15/2025			9/15/2025	
Castlevue	Open Space - East (Century-8 / Via Vista-3)		4/30/2025		1		7/3/2025			
Fairmount	Bike Trail (Below Indian Hill)	7/20/2025	5/4/2025		1		5/26/2025			
Fairmount	Rin Tin Tin / Circle Lazy J / Residential Structures	7/20/2025	5/1/2025		2.5	7/7/2025	5/26/2025		7/30/2025	6/2/2025



DATA

- Our defensible Space efforts are guided by:
 - **Site Conditions:** Assessing risk in specific areas.
 - **Invasive Weed Growth:** Targeting high-fuel zones.
 - **Weather Patterns:** Adapting to changing conditions.
 - **Fire Severity Maps (ArcGIS Online):** Identifying high-risk areas.
- GIS mapping ensures that we focus resources where they're needed most



SMART STRATEGIES

We use a combination of IPM methods:

- **Mowing:** Regular mowing by city staff
- **Chemical application:** Chemical application by trained city staff targeting invasive species. Seed removal of invasive species. Stump Treatment as needed.
- **Handwork (Line Trimming):** Contractors address most areas 1x, while the city maintains after.
- **Invasive Tree Removal / Native Tree Trimming:** Contractors and City Workers address as needed.
- **Trail Maintenance:** Fire Breaks. Maintaining access roads and bridges for emergency response.

This integrated approach maximizes results while minimizing environmental impact.



CHALLENGES

- Protected arroyos and waterways play a crucial role in ecosystem health and community safety at the Wildland-Urban Interface (WUI). Achieving and maintaining their health involves:
 - Navigating complex federal, state, and local permitting requirements.
 - Performing additional maintenance to keep these areas weed-free.
 - Allowing native plants to re-establish, creating biodiverse and flourishing habitats.
- The city is committed to ongoing work:
 - Obtain necessary permits.
 - Increase staff or contracted maintenance efforts.
 - Support native plant growth, which enhances biodiversity and ecosystem resilience.



CONSERVATION EASEMENTS

Conservation easements are essential for preserving natural habitats and safeguarding the Wildland-Urban Interface (WUI).

- **Definition:** Conservation easements are legally binding agreements that limit how a piece of land can be used, focusing on preserving its ecological, historical, or agricultural value.
- **Importance:** They play a crucial role in safeguarding natural habitats, promoting biodiversity, and maintaining the area's scenic beauty, ultimately benefiting the community and environment.

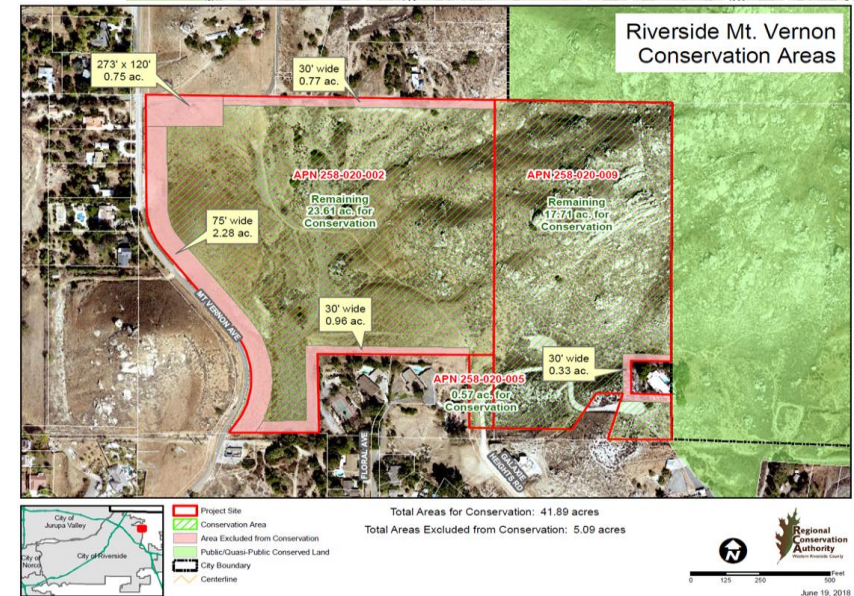
Contribution to Fire Protection

- **Ecosystem Health:** By preserving land, conservation easements help maintain healthy ecosystems that can significantly reduce the risk of wildfires.
- **Waterway Protection:** They protect vital water resources, including aquifers and watershed areas, which are essential for maintaining the resilience of the ecosystem against fires.

Key Organizations Involved

Unified Collaborative Efforts

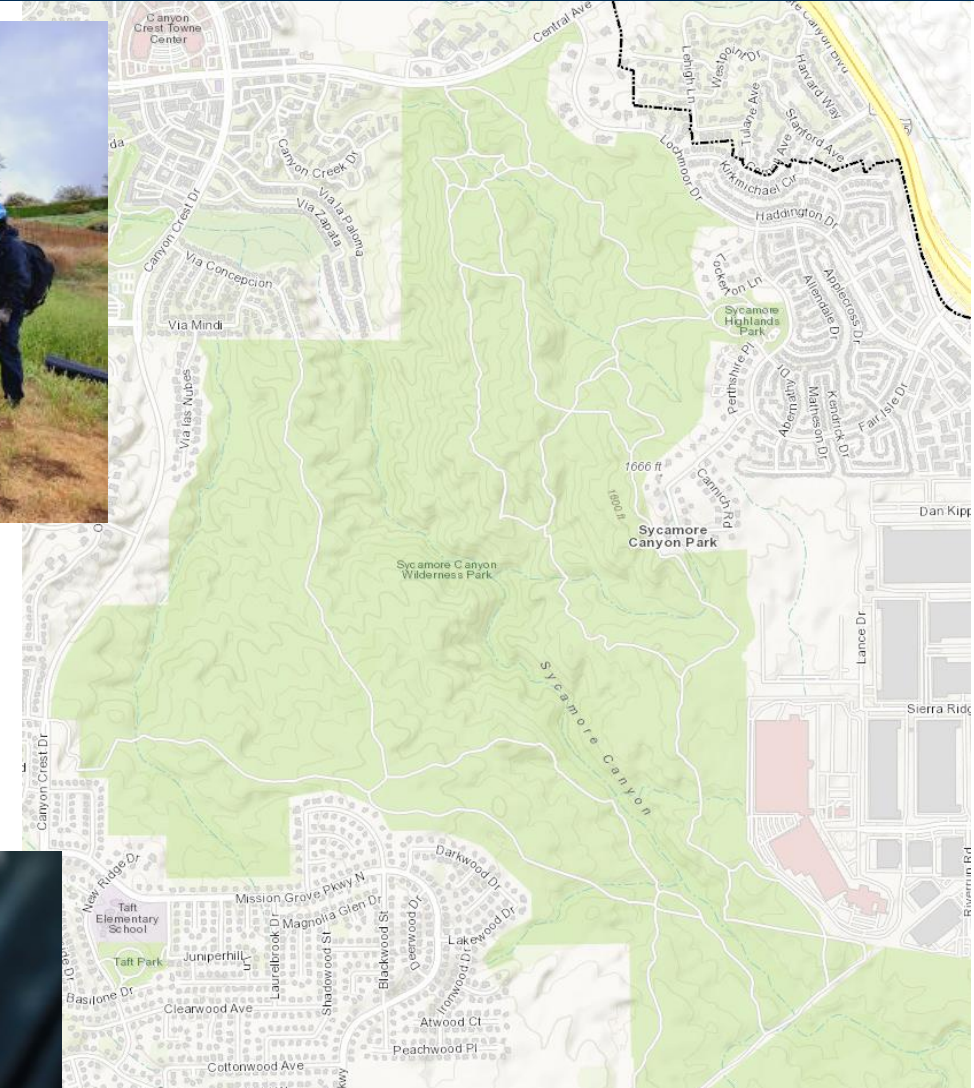
- **Funding Initiatives:** The Department of Conservation has allocated funds to various partners in Riverside to create fire-resilient communities, exemplifying a strong commitment to environmental stewardship.
- **Public and Private Partnerships:** Local organizations and governmental bodies are engaged in collaborative projects that integrate conservation strategies with fire risk management, fostering a holistic approach to community and environmental safety.
- Currently, the city is working toward establishing a **city-wide permit** to streamline maintenance and conservation efforts across multiple sites.
- Despite permit progress, ongoing maintenance remains critical to ensure these areas thrive.



SYCAMORE CANYON

Sycamore Canyon Plan/Goals

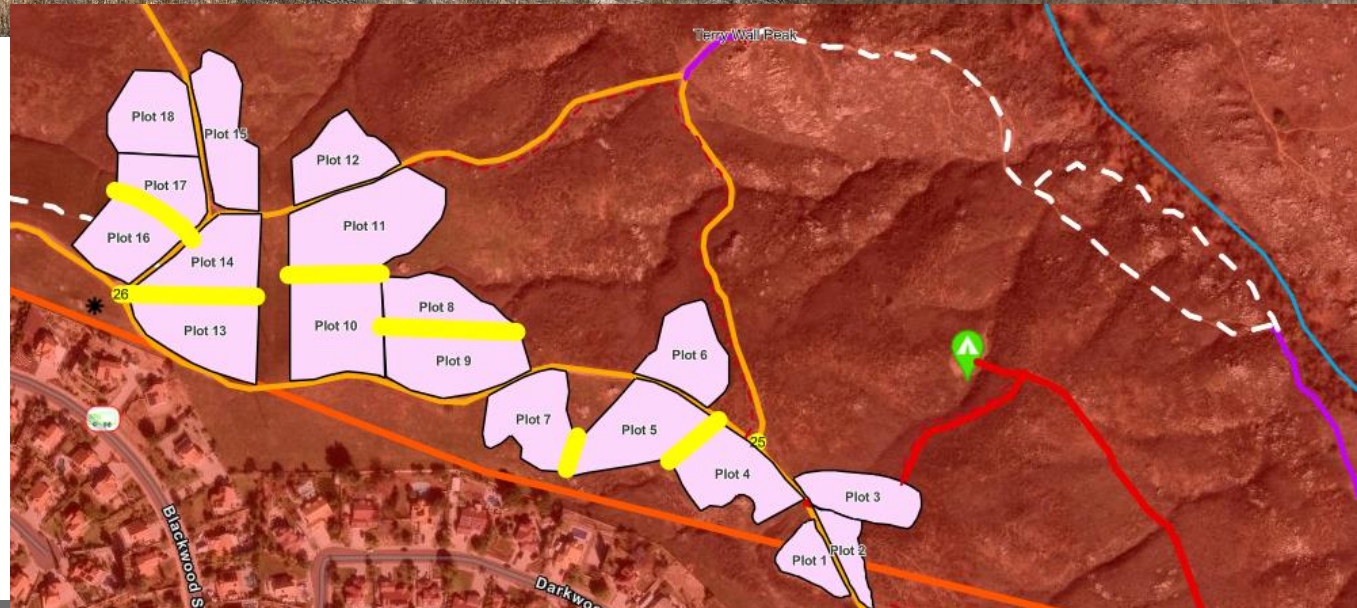
- Enhance fire safety and trail access for visitors
- Support sustainable trail maintenance and improvements
- Restore habitats to increase biodiversity and ecological resilience
- Use ArcGIS to identify risk zones and prioritize trail upgrades
- Improve safety, emergency response times, and recreational opportunities
- Combat invasive species through mapping, targeted removal, and monitoring
- Protect endangered species and stabilize soil
- Promote habitat and biodiversity restoration for healthier ecosystems
- Engage the community in conservation efforts
- Serve as a model for proactive, ecological management across Riverside



COLLABORATION

- Content:

- We work closely with the Fire Department:
 - Sharing real-time data via ArcGIS Online
 - Coordinated Resident response plans
 - Prescribed burns
<https://youtu.be/3YIY01oDVkQ>
- This partnership enhances community safety.



HOW CAN YOU HELP

- You can help:
 - Create a defensible space around your home.
 - Attend workshops and events.
 - Report fire hazards.
- Volunteer and get involved in park projects.



ONGOING COMMITMENT

We're committed to:

- Timely Completion of all planned treatments.
- Expanding GIS mapping capabilities.
- Increasing Community outreach and education.
- Enhance Coordination.
- Pursuing innovation for new Prevention and space.

We'll continue to improve and adapt to meet the challenges ahead.



STRATEGIC PLAN ALIGNMENT

Arts, Culture, and Recreation: This strategic priority includes actions related to enhancing recreational amenities and improving the safety of parks and recreational facilities. Several elements you mentioned, such as trail restoration, fire access improvements, and community engagement, align with this priority. (See goal 1.1-1.5)

Community Well-Being: Invasive species control, habitat restoration, wildlife conservation, and community engagement, which fall under goal 2.1-2.6.

Economic Opportunity: This strategic priority encompasses attracting investment, supporting local businesses, and developing a skilled workforce, which falls under goals 3.1-3.5.

Environmental Stewardship: The plan focuses on preserving natural resources, reducing environmental impact, and promoting sustainability, which aligns with goals 4.1-4.6.

High Performing Government: Improving services and building public trust falls under goal 5.1-5.5.

Infrastructure, Mobility, and Connectivity: Infrastructure and the importance of connectivity relate back to making it more accessible for the community (trails, parkways), as well as to improving and building the city's infrastructure 6.1-6.4.