


**Riverside-Downtown  
STATION IMPROVEMENTS**

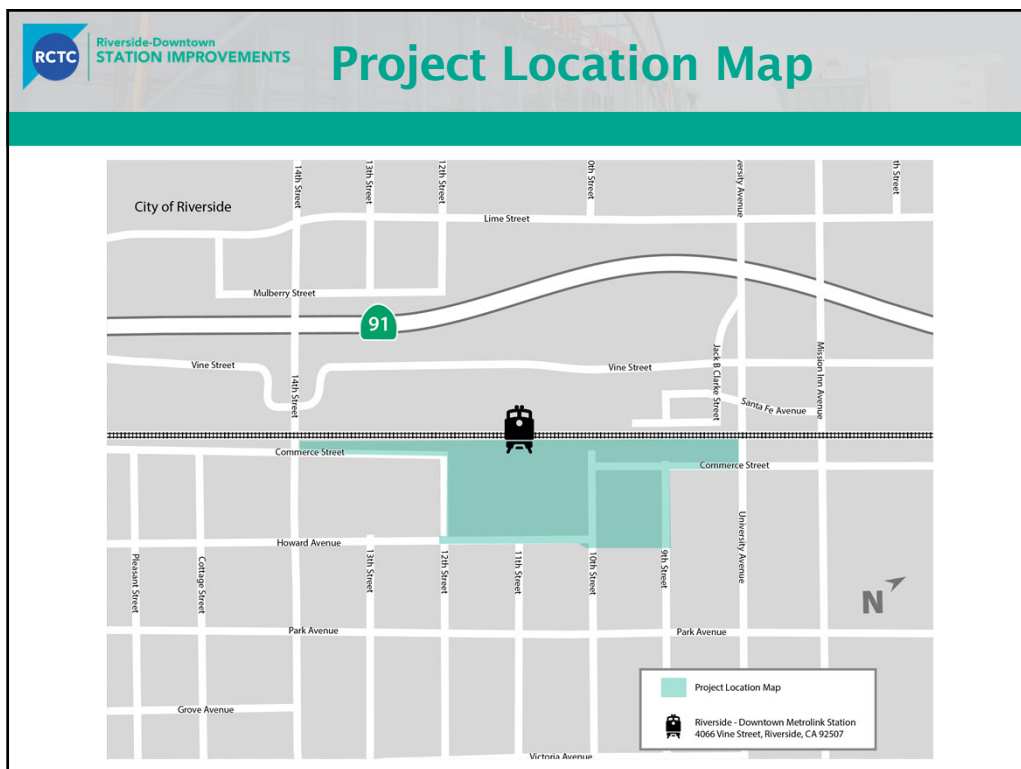
# Riverside Downtown Station




**City of Riverside  
Mobility &  
Infrastructure  
Committee  
Meeting**

**Thursday, July 8, 2021  
4:00 p.m.**

1



2



**Riverside-Downtown  
STATION IMPROVEMENTS**

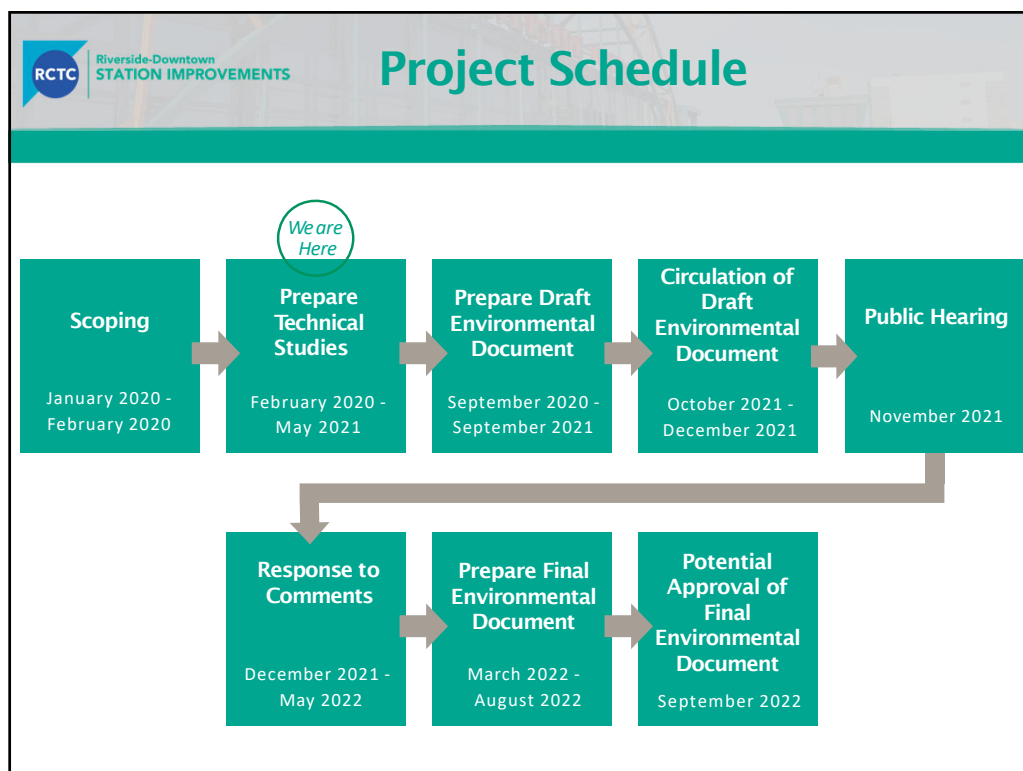
## Project Objectives and Purpose

**The purpose of the proposed Project is to expand capacity, improve operations and efficiency, connectivity, and the passenger experience at the Riverside-Downtown Station.**

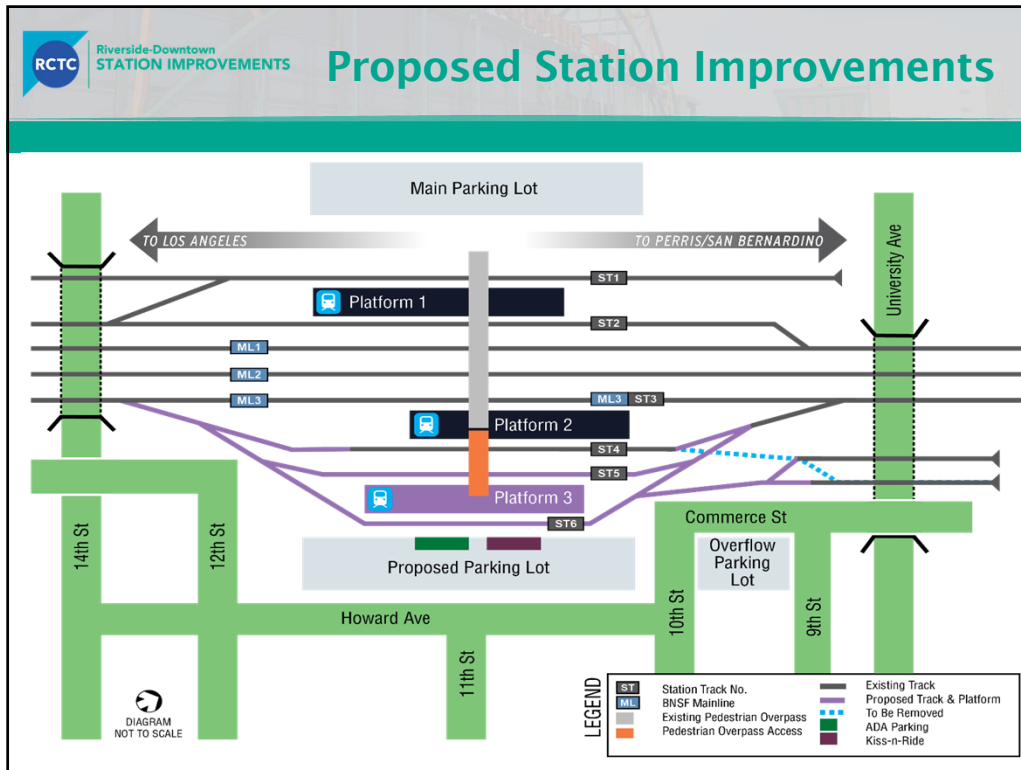
**Project Objectives**

- Expand platform capacity to meet passenger train storage needs
- Allow for train meets off the BNSF mainline
- Improve train connectivity and passenger accessibility
- Facilitate more efficient passenger flow
- Enhance safety and access for station users
- Accommodate projected future demand

3



4



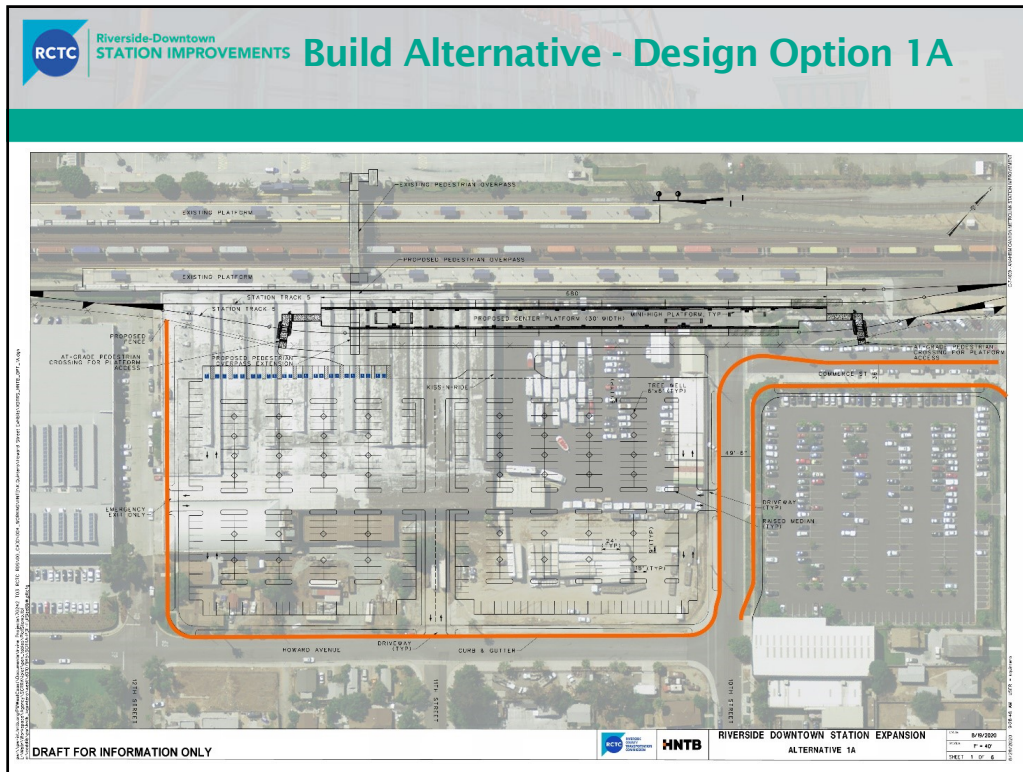
5

**RCTC Riverside-Downtown STATION IMPROVEMENTS**

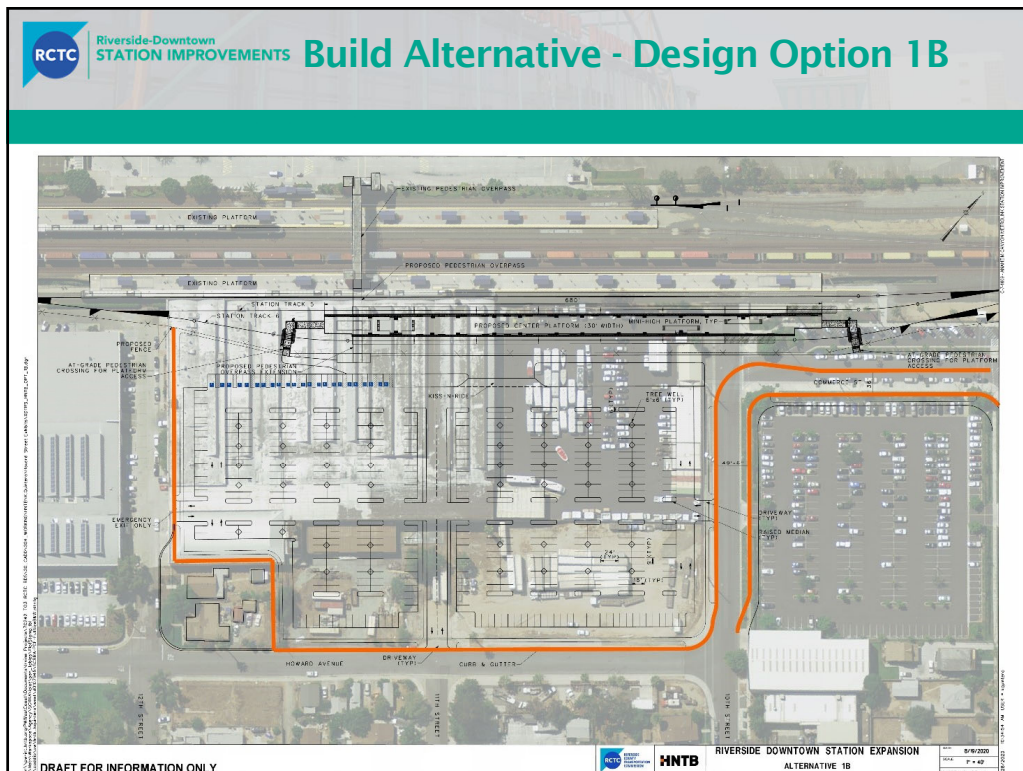
## Talking Points – Project Improvements

Element	Description
<b>Station Platform and Track Improvements</b>	<ul style="list-style-type: none"> <li>• Add a new center platform</li> <li>• Add new tracks</li> <li>• Modify the railroad signal system</li> </ul>
<b>Pedestrian Access Improvements</b>	<ul style="list-style-type: none"> <li>• Extend pedestrian access to the new platform</li> <li>• Provide emergency egress at three locations</li> </ul>
<b>Parking, Circulation, and Streetscape Improvements</b>	<ul style="list-style-type: none"> <li>• Relocate ADA parking</li> <li>• Modify the bus drop-off area</li> <li>• Add sidewalks and trees</li> <li>• Add up to 560 additional parking spaces</li> </ul>

6

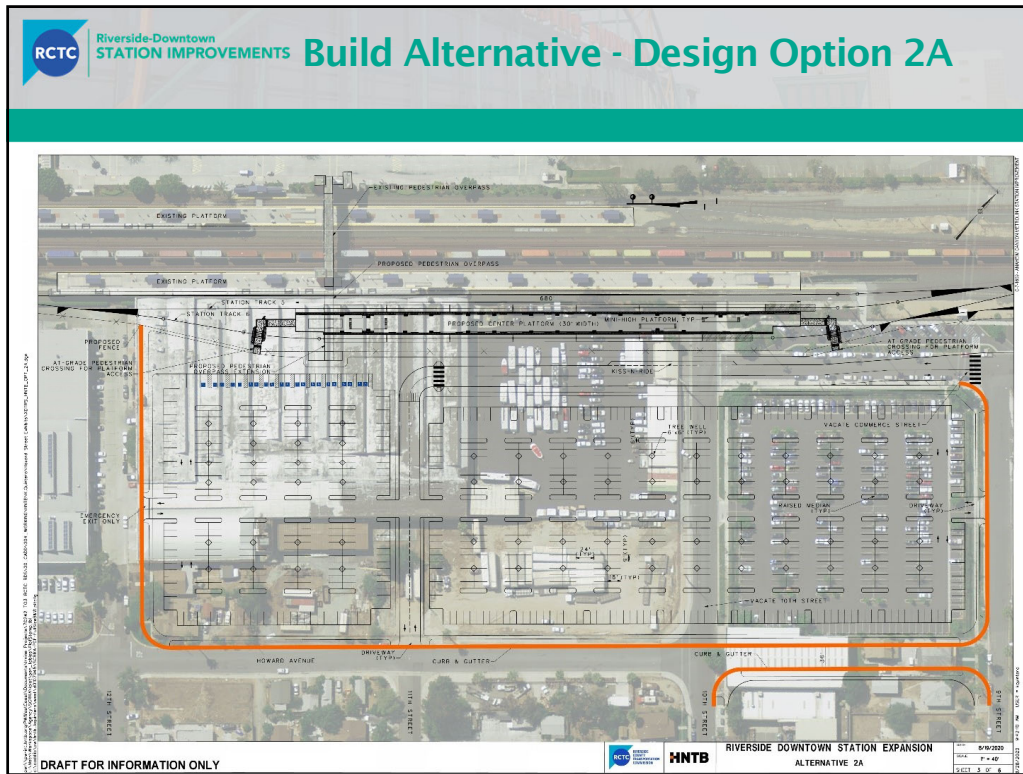


7

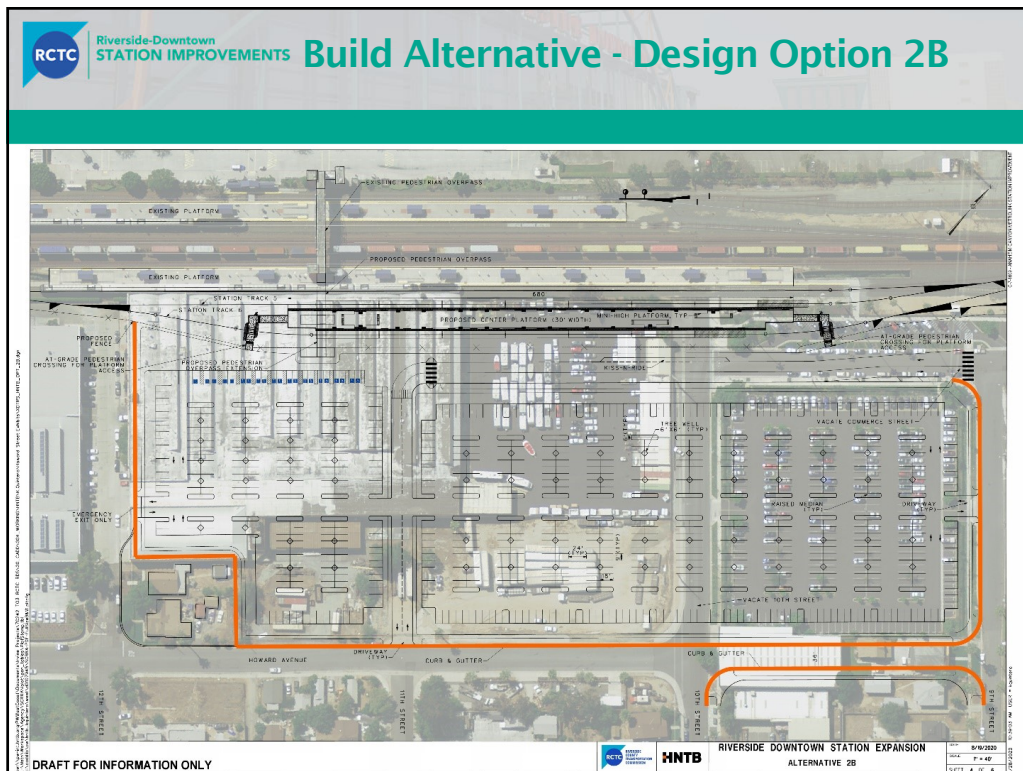


8

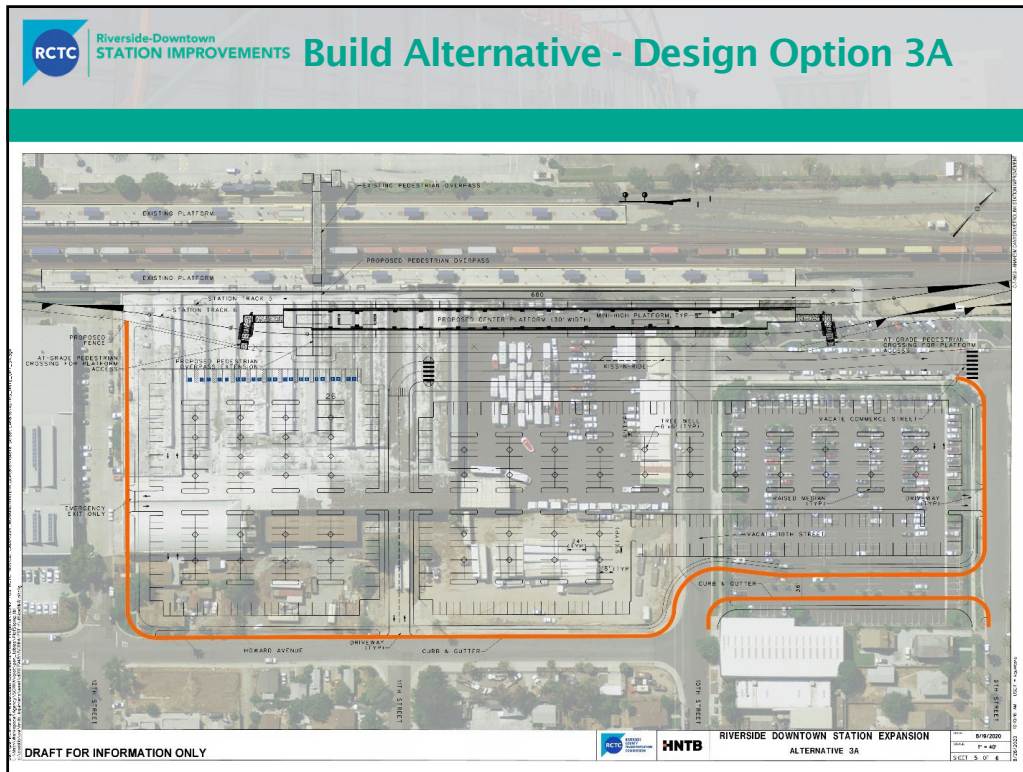




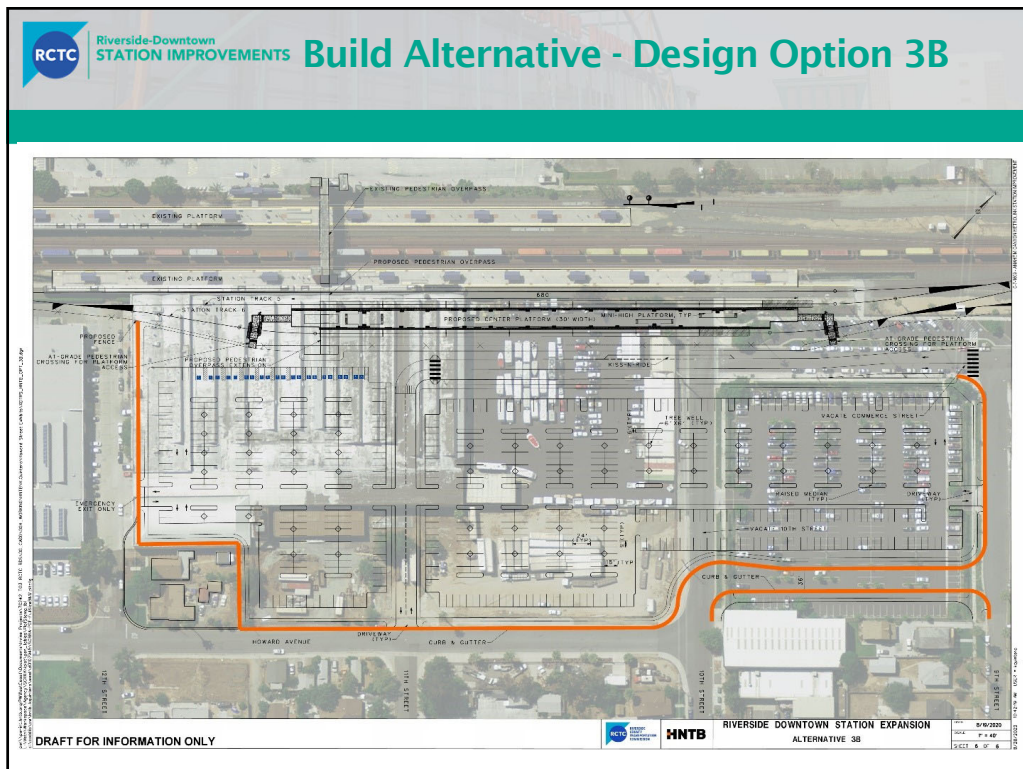
9



10




11



12





Riverside-Downtown  
STATION IMPROVEMENTS

## Technical Studies

**The following Technical Studies are in Progress:**

→ Aesthetics/Visual	→ Hazardous Waste/Materials
→ Air Quality/Greenhouse Gases	→ Noise/Vibration
→ Biological Resources	→ Paleontological Resources
→ Cultural (Historic & Archaeology)	→ Relocation Impacts
→ Community/Section 4(f)	→ Stormwater/Water Quality
→ Energy	→ Traffic Analysis
→ Geotechnical	

13

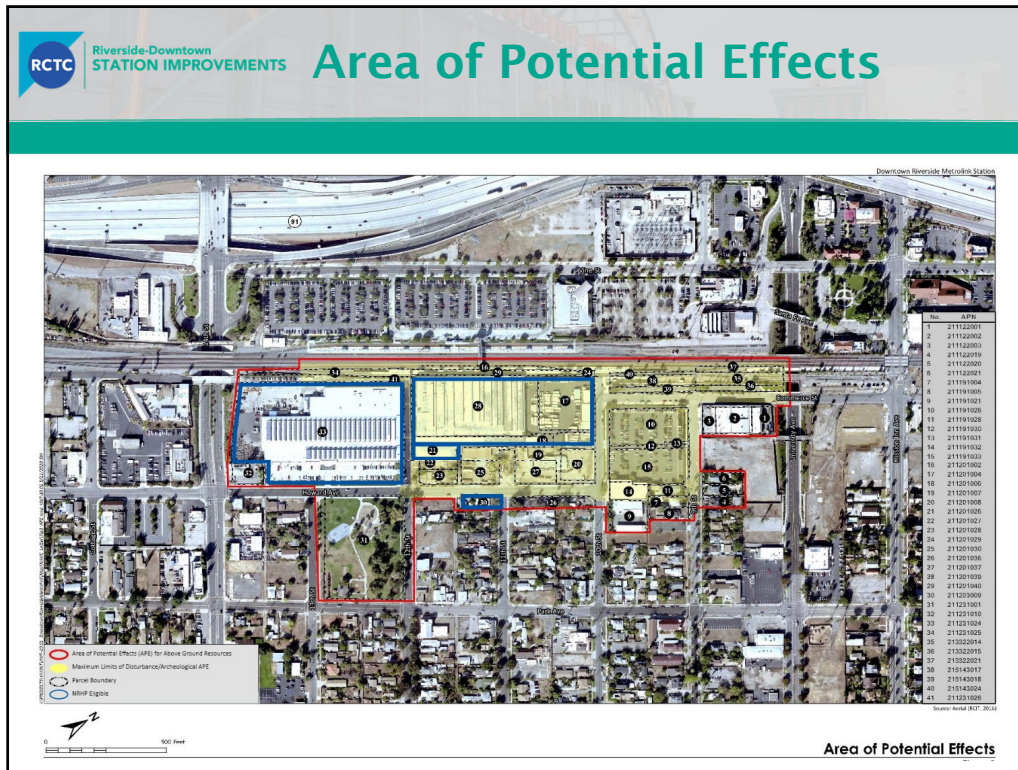


Riverside-Downtown  
STATION IMPROVEMENTS

## Cultural Resources – Section 106

- **Identification of Historic Properties**
  - Area of Potential Effects
  - Cultural Resources Identified
  - Resources Potentially Impacted
- **Avoidance Alternatives Under Consideration**
- **Adaptive Reuse (Full and Partial Reuse)**

14




15

**RCTC** Riverside-Downtown STATION IMPROVEMENTS **NRHP-Eligible Resources in APE**

- There are 12 previously recorded historic resources and seven newly-recorded historic resources in the APE.
- Of these resources, only two are considered NRHP-eligible Historic Properties:
  - Food Machinery Corporation (FMC) Complex
  - Howard Avenue worker's houses

16






Riverside-Downtown  
STATION IMPROVEMENTS

## Avoidance Alternatives

**Avoidance alternatives were considered:**

- **New Platform and Tracks on the West Side of the Existing Station**
  - Challenges include connectivity issues with PVL trains, removal of layover tracks, new bridge over 14<sup>th</sup> Avenue
- **New Platform and Tracks on the East Side of the Existing Station**
  - Challenges include stub-ended configuration, widening existing bridge over University Avenue, grade-separating Mission Inn Avenue
- **New Platform and Tracks on the East Side of the Existing Station (east of 14<sup>th</sup> Street)**
  - Challenges include impacts to BNSF operations, ROW

17

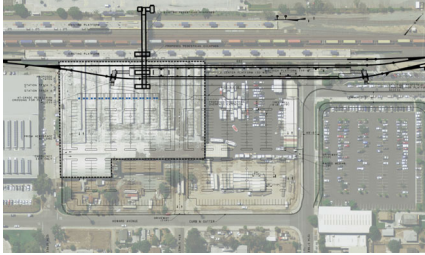



Riverside-Downtown  
STATION IMPROVEMENTS


## Adaptive Reuse – FMC Plant 1

**Full and Partial Reuse**

- Timber frame construction with timber trusses pinned to concrete slab foundation
- Would require extensive alterations to timber columns and truss members
- Primary, historic character-defining features would be lost
- Would not retain integrity and meet SOIS standards for rehabilitation
- Nearly 100 years of previous industrial uses left behind hazardous waste/materials

18



# Questions/Comments

19



## Stay Connected

-  Questions/Comments received during this meeting will be summarized into the comments and coordination section of the Draft EIR/EA
-  Email to [stationproject@rctc.org](mailto:stationproject@rctc.org)
-  Mail comments to:  
David Lewis, Capital Projects Manager  
Riverside County Transportation Commission  
P.O. Box 12008  
Riverside, CA 92502-2208
-  For more information, please visit:  
[rctc.org/stationimprovements](http://rctc.org/stationimprovements)

   @TheRCTC | [rctc.org](http://rctc.org)

20