



CITY OF RIVERSIDE
2050
GENERAL PLAN UPDATE

CITY OF RIVERSIDE
CLAAAP
CLIMATE ACTION & ADAPTATION PLAN

CITY OF RIVERSIDE GENERAL PLAN UPDATE & CLIMATE ACTION AND ADAPTATION PLAN

Board of Public Utilities Update
Q2 2025
July 14, 2025



1



CITY OF RIVERSIDE
2050
GENERAL PLAN UPDATE

CITY OF RIVERSIDE
CLAAAP
CLIMATE ACTION & ADAPTATION PLAN

CITY OF RIVERSIDE

**Community
Engagement:
What We've Done**

The full Community Engagement section is available at the end of the slide deck under
Additional Slides.

2

Community Engagement - Overview

Pop-Up Events:

- Seven pop ups throughout April

Outreach Overview:

- 485+ stakeholders engaged
- 140 comment cards collected
- 116 mapping comments received
- Bilingual staff and materials at every event

Stakeholder Briefings:

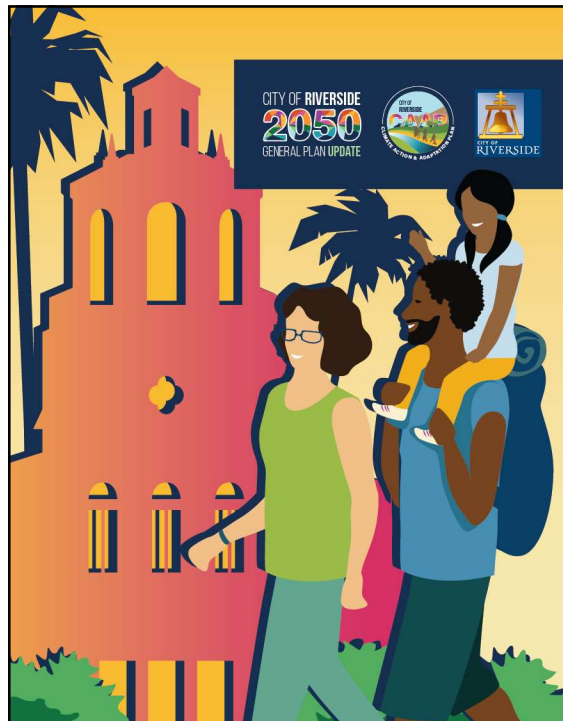
- Share GPU & CAAP updates, land use concepts, and outreach efforts
- 44 participants
- 218 comments
- Use input to refine land use concepts, policies, and outreach

Land Use Community Workshop:

- Open-house with bilingual materials, family-friendly activities, and digital/physical feedback
- 150+ stakeholders engaged
- 218 comments
- Use input to refine land use concepts, policies, and outreach



3



Draft Existing Conditions Report

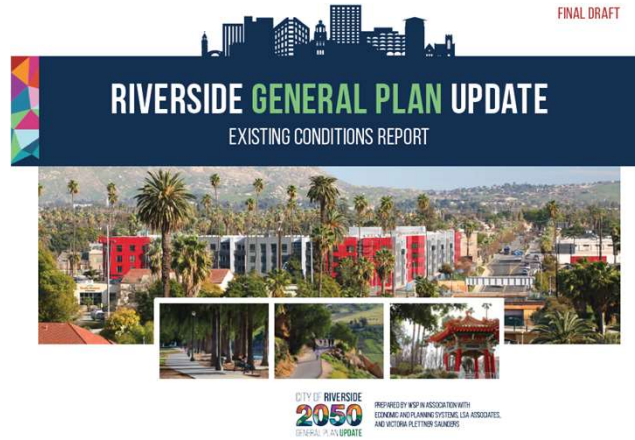
The full Draft Existing Conditions Report is available at the end of the slide deck under Additional Slides.

4

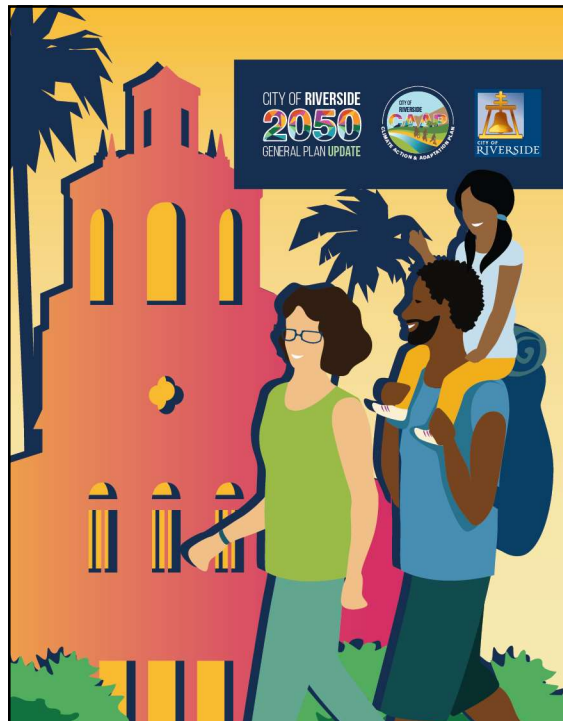
Draft Existing Conditions Report - Overview

Final Draft

- Used by the technical team to fully understand the existing conditions of Riverside
- Provides the basis, along with public engagement, for the analyses and future recommendations
- Will be used by the CEQA team to inform the existing conditions as part of the CEQA review
- Is a document that will be uploaded to the website that can be read by the public



5



Greenhouse Gas Emissions Inventory

6

Greenhouse Gas Inventory Overview

- Community-wide inventory of greenhouse gases generated within Riverside during inventory year
- 2023 selected as inventory year because it is the most recent year with readily available data
- Data collected from local data sources where available
- Data gaps filled with county-level data scaled to the city-level
- Emissions estimates based on U.S. Community Protocol for Accounting and Reporting of Greenhouse Gas Emissions (U.S. Community Protocol), developed by ICLEI USA
- Analysis performed using ICLEI's ClearPath online platform
- Methodology is repeatable for future inventories



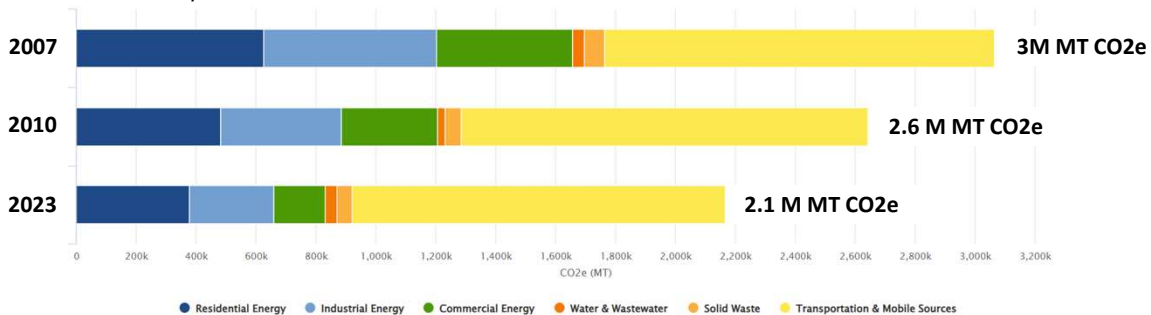
ICLEI: International Council for Local Environmental Initiatives, a global network of local governments committed to sustainable development



7

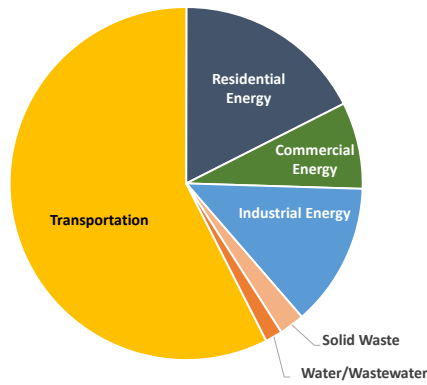
GHG Emissions Trending Downward Over Time

- Energy reductions due to electrical grid incorporating more renewable sources
- Transportation is stable – Increased population is offset by stricter vehicle standards
- Note: 2023 is only inventory prepared for CAAP. 2007 and 2010 inventories were prepared with different methodologies. They are presented to demonstrate the general downward trend over time



8

Riverside 2023 GHG Inventory Summary



Sector	Emissions (MT CO ₂ e)	Percent of Total
Transportation	1,244,196	57%
Residential Energy	378,332	17%
Commercial Energy	171,657	8%
Industrial Energy	280,639	13%
Solid Waste	49,625	2%
Water & Wastewater	42,617	2%
Total	2,167,067	100%

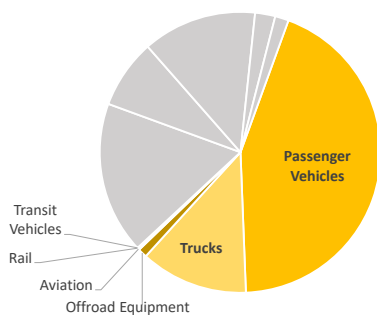
Note: Columns may not add to totals due to rounding.

MT CO₂e: metric tons of carbon dioxide equivalent



9

Transportation Details



Emission Source	Description	Data Source	MT CO ₂ e	Percent of Total Inventory
Passenger Vehicles	Motorcycles, passenger cars, light duty passenger trucks (SUVs, pickups)	WRCOG regional travel demand model	947,061	44%
Medium and Heavy Trucks	Medium and heavy trucks for freight and commercial use	WRCOG regional travel demand model	267,926	12%
Offroad Equipment	Construction equipment, landscaping, recreational vehicles	CARB OFFROAD Model	22,919	1%
Aviation	Aircraft emissions	Riverside Municipal Airport	4,720	0.2%
Rail	Line-haul, switcher, passenger rail, commuter rail	CARB OFFROAD Model	1,134	0.1%
Transit Vehicles	Transit buses, mini buses, transit vans	RTA, Riverside Connect	436	<0.1%



10

Transportation Details (continued)

Emission Source	Annual Activity	MT CO2e	Percent of Total Inventory
Passenger Vehicles	11,107,882,544 vehicle miles traveled	947,061	44%
Medium and Heavy Trucks	3,628,743,228 vehicle miles traveled	267,926	12%
Offroad Equipment - gasoline	445,733 gallons of fuel	22,919	1%
Offroad Equipment - diesel	1,764,336 gallons of fuel		
Aviation	525,263 gallons of fuel	4,720	0.2%
Rail	110,063 gallons of fuel	1,134	0.1%
Transit Vehicles	4,134,480 vehicle miles traveled	436	<0.1%

VMT excludes pass-through traffic, limited to miles traveled within Riverside and ½ of all trips beginning or ending within Riverside

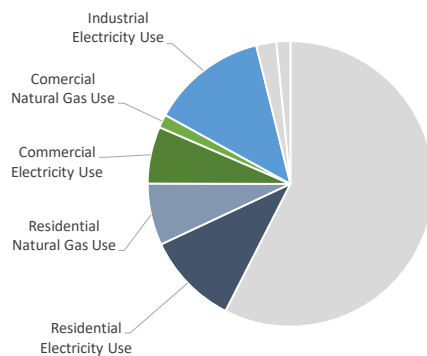
Rail includes pass-through traffic, limited to miles traveled through Riverside

Aviation based on all aircraft fueled at Riverside Municipal Airport



11

Energy Details



Emission Source	Data Source	MT CO2e	Percent of Total Inventory
Residential Electricity	RPU	226,801	10%
Residential Natural Gas	SoCalGas	151,531	7%
Commercial Electricity	RPU	139,408	6%
Commercial Natural Gas	SoCalGas	32,249	1%
Industrial Electricity	RPU	280,639	13%

Note: Columns may not add to totals due to rounding.

- RPU classifies customers as commercial or industrial based on energy demand
- SoCalGas does not provide industrial natural gas information due to privacy concerns



12

Inventory Summary

- GPU will impact future on-road VMT
- GHG from electricity sources will reduce as grid moves to carbon neutrality by 2040
- On-road vehicle GHG will reduce as fuel economy standards, emissions standards, and EV mandates are phased in
- CAAP measures can be developed for most sources

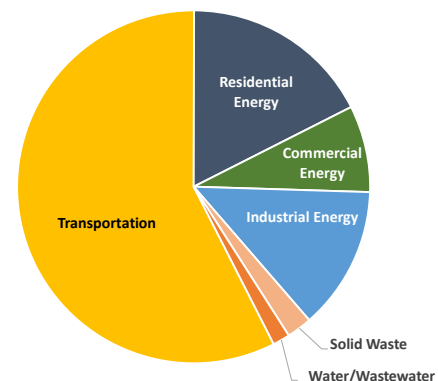
Emission Source	MT CO ₂ e	Percent of Total	Impacted by GPU	Impacted by Current Legislation	Potentially Impacted by CAAP
Passenger Vehicles	947,061	44%	✓	✓	✓
Industrial Electricity	280,639	13%		✓	✓
Medium and Heavy Trucks	267,926	12%	✓	✓	✓
Residential Electricity	226,801	10%		✓	✓
Residential Natural Gas	151,531	7%			✓
Commercial Electricity	139,408	6%		✓	✓
Commercial Natural Gas	32,249	1%			✓
Solid Waste	40,052	2%			✓
Drinking Water	29,864	1.4%			✓
Offroad Equipment	22,919	1.1%		✓	✓
Compost	9,573	0.4%			✓
Non-potable Water	5,966	0.3%		✓	✓
Wastewater Treatment	6,787	0.3%		✓	
Aviation	4,720	0.2%			
Rail	1,134	0.1%			
Transit Vehicles	436	<0.1%	✓	✓	✓

Note: Columns may not add to totals due to rounding.

13

GHG Emissions Inventory

- GHG Emissions Inventory is the baseline for projecting future emissions and determining reduction measures
- Data was collected from utilities, WRCOG, CARB, and EPA for 2023
- Methodology follows ICLEI's US Community Protocol and uses ICLEI's ClearPath Software
- **Transportation sector emissions will be influenced by GPU land use and transportation decisions**

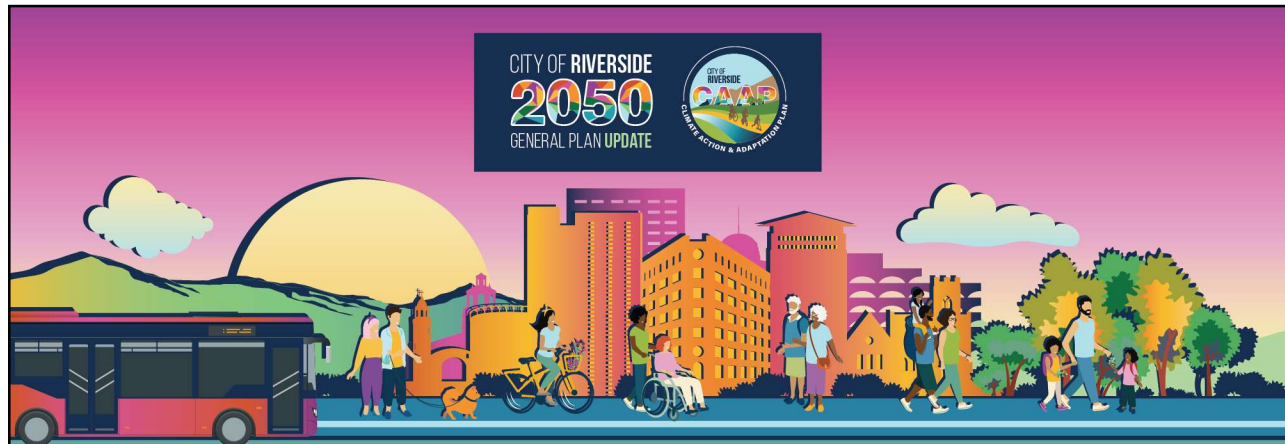


14

16

[illegible]

- Community members are encouraged to leave comments about their priorities for land use in their neighborhoods using our interactive mapping activity at www.riverside2050.com!



CITY OF RIVERSIDE
2050
GENERAL PLAN UPDATE

CITY OF RIVERSIDE
CLIMATE ACTION & ADAPTATION PLAN


CITY OF RIVERSIDE GENERAL PLAN UPDATE & CLIMATE ACTION AND ADAPTATION PLAN

Stay Connected

Matthew Taylor
Principal Planner
Mtaylor@riversideca.gov

Fortino Morales III
Sustainability Manager
FoMorales@riversideca.gov

Outreach Team
Info@riverside2050.com
(844) 289-8614



17

Community Engagement: What We've Done

18

Stakeholder Briefing

Date & Time: March 27, 2025 | **Location:** Zoom

Purpose:

- Share GPU & CAAP updates, land use concepts, and outreach efforts
- Gather feedback on economic development, infrastructure, public space, and equity

Who Attended:

- 44 participants including City staff, GPAC members, community leaders, and stakeholders:
 - *Arlington Business Partnership, RTA, RCCD, RUHS, UC Riverside, Riverside USD, Alvord USD, Riverside Women's Club, Riverside Arts Council, R-NOW, Cultural Heritage Board, Love Riverside, Engage Riverside, Tree People, Fair Housing Council of Riverside County*

What We Heard:

- 218 comments
- Strong support for neighborhood-scale revitalization, access to transit, and youth-focused amenities
- Desire for better integration of housing, health, education, and climate resilience
- Interest in innovative partnerships and cross-sector collaboration

Next Steps:

- Use input to refine land use concepts, policies, and outreach
- More briefings to come in 2025 – **Please let us know if you have a specific group you think we should brief**



19

Land Use Community Workshop

Date & Time: April 3, 2025, 6-8 PM | **Location:** Renck Community Center at Hunt Park

Format: Open-house with bilingual materials, family-friendly activities, and digital/physical feedback

Attendance: 150+ community members, GPAC, stakeholders, and residents

Activities:

- **Neighborhood Land Use Mapping Activity:** 152 land use comments via pins and tags on 30 neighborhood map boards
- **Top Three Topics:** Housing, public facilities, green space

CAAP Participatory Budgeting Activity Top Priorities:

- Urban Greening
- Waterways Protection
- Shaded Paths & Bike Lanes



20

Pop-Up Events & Movable Exhibits

Pop-Up Events:

- Citrus Festival – April 5
- Canyon Crest Town Center – April 6
- Bingo at Janet Goeske Senior Center – April 7
- Spring Egg Hunt at Bryant Park – April 12
- Spring Glow Hunt at Hunt Park – April 12
- La Sierra SpringFest – April 12
- Earth Day at Riverside Food Lab – April 22

Movable Exhibits:

- Spc Jesus S. Duran Eastside Library
- Stratton Community Center (Bordwell Park)
- Janet Goeske Senior Center
- Arlanza Community Center
- Renck Community Center (Hunt Park)
- La Sierra Senior Center
- Riverside Food Lab

Outreach Overview:

- 485+ stakeholders engaged
- 140 comment cards collected
- 116 mapping comments received
- Bilingual staff and materials at every event



21

Blue Zones Riverside Project – Launch Event



22

Community Mural Outcomes & Core Themes

1. **Sustainability & Environment** – Nature, clean air/water, urban farming, and preserving natural spaces.
2. **Built Environment & Landmarks** – Iconic sites, public spaces, cleanliness, and civic pride.
3. **Land Use** – Citrus/agriculture, commercial and residential balance, open space.
4. **Equity & Diversity** – Inclusion, safety, optimism, and belonging.
5. **Arts, Culture, Health & Education** – Museums, festivals, public art, healthcare, and schools.
6. **Recreation** – Outdoor fun, parks, sunsets, and community gatherings.
7. **Transportation & Mobility** – Walkability, bikes, buses, and safe streets.
8. **Economic & Workforce Development** – Support for small businesses and job creation.
9. **Housing** – Affordability, preventing overdevelopment, and reducing homelessness.
10. **Innovation & Technology** – Renewable energy, EV charging, and public Wi-Fi.

**Themes listed in order based on frequency of mentions*

Ward	Submissions
1	265
2	525
3	105
4	108
5	110
6	359
7	249
No Ward Provided	45
Other City	7
Grand Total	1773



23

What's Missing?

- Are there gaps in our outreach for this phase?
- Are there communities or constituencies that we have missed?
- How can we solicit more substantive input on the community's land use priorities?



24

Draft Existing Conditions Report

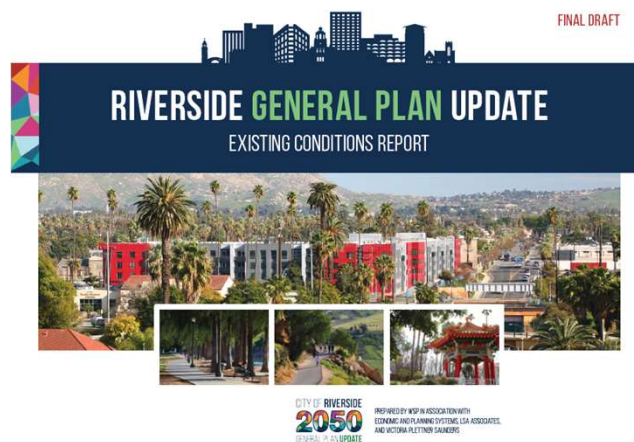


25

Draft Existing Conditions Report - Overview

Final Draft

- Used by the technical team to fully understand the existing conditions of Riverside
- Provides the basis, along with public engagement, for the analyses and future recommendations
- Will be used by the CEQA team to inform the existing conditions as part of the CEQA review
- Is a document that will be uploaded to the website that can be read by the public

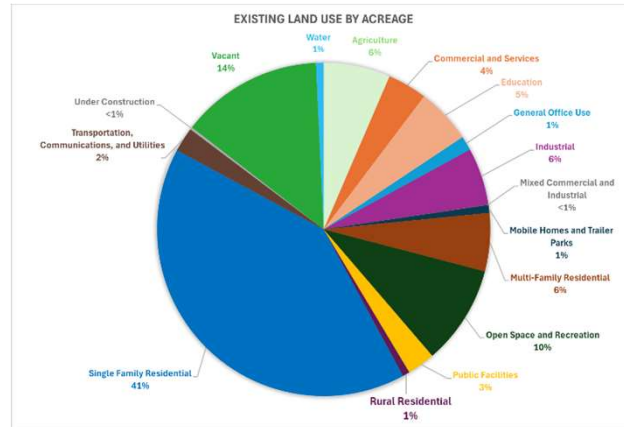


26

Existing Conditions Report Highlights & Key Findings

Land Use:

- Riverside has 25 land use designations, nine of which are primarily residential
- There are 20 specific plans that provide more detail and vision
- Commercial, office, and mixed-use designations are mostly located along the city's major corridors
- Single-family residential uses are approximately 41% of all land area



27

Existing Conditions Report Highlights & Key Findings

Economic and Market Indicators:

- Slower growth – population and job growth have lagged behind the region and are projected to continue at a slower pace
- Housing pressure – rents are rising and 55% of renters are cost-burdened
- Core industries – Health care, construction, public administration, and accommodation/food service have been driving recent job growth, while education and administration services remain major employment categories
- Office and retail struggles – retail and hotel demand is leaking to nearby cities, meaning opportunities exist to capture more local spending

COST BURDEN (% OF INCOME SPENT ON HOUSING COSTS)	RIVERSIDE	TRADE AREA	REGION
Owner-Occupied [1]			
Not Cost Burdened (<30%)	70%	69%	69%
Cost Burdened (30%+)	28%	31%	31%
Severely Cost Burdened (50%+)	11%	12%	12%
Renter-Occupied [1]			
Not Cost Burdened (<30%)	41%	41%	41%
Cost Burdened (30%+)	55%	55%	55%
Severely Cost Burdened (50%+)	27%	28%	28%

28

Existing Conditions Report Highlights & Key Findings

Parks and Recreation:

- The Parks, Recreation, and Community Services Department (PRCSD) has focused on supporting many year-round programs for a diverse group of citizens
- PRCSD has completed the Comprehensive Park, Recreation & Community Services Master Plan in 2020
- Data has been updated to show changes to park names, new facilities, and new parks
- Since the adoption of the 2025 General Plan, there have been few parks built



Existing Conditions Report Highlights & Key Findings

Arts and Culture:

- The Arts and Cultural Affairs Division (ACAD) provides cultural experiences for residents, funding for art and cultural organizations, and event programming
- There is a robust cultural infrastructure that includes historic performing arts venues such as the Fox Performing Arts Center, the Cheech Marin Center for Chicano Art, and historic landmarks
- The Arts and Culture District has significant momentum and support across multiple stakeholders
- Artists view Riverside as both a beloved home base and a place for career launching

