



Riverside Gateway Parks Master Plans – Follow Up

**Parks, Recreation and Community Services
Department**

Park and Recreation Commission
September 19, 2022

Project Background

Project Goals:

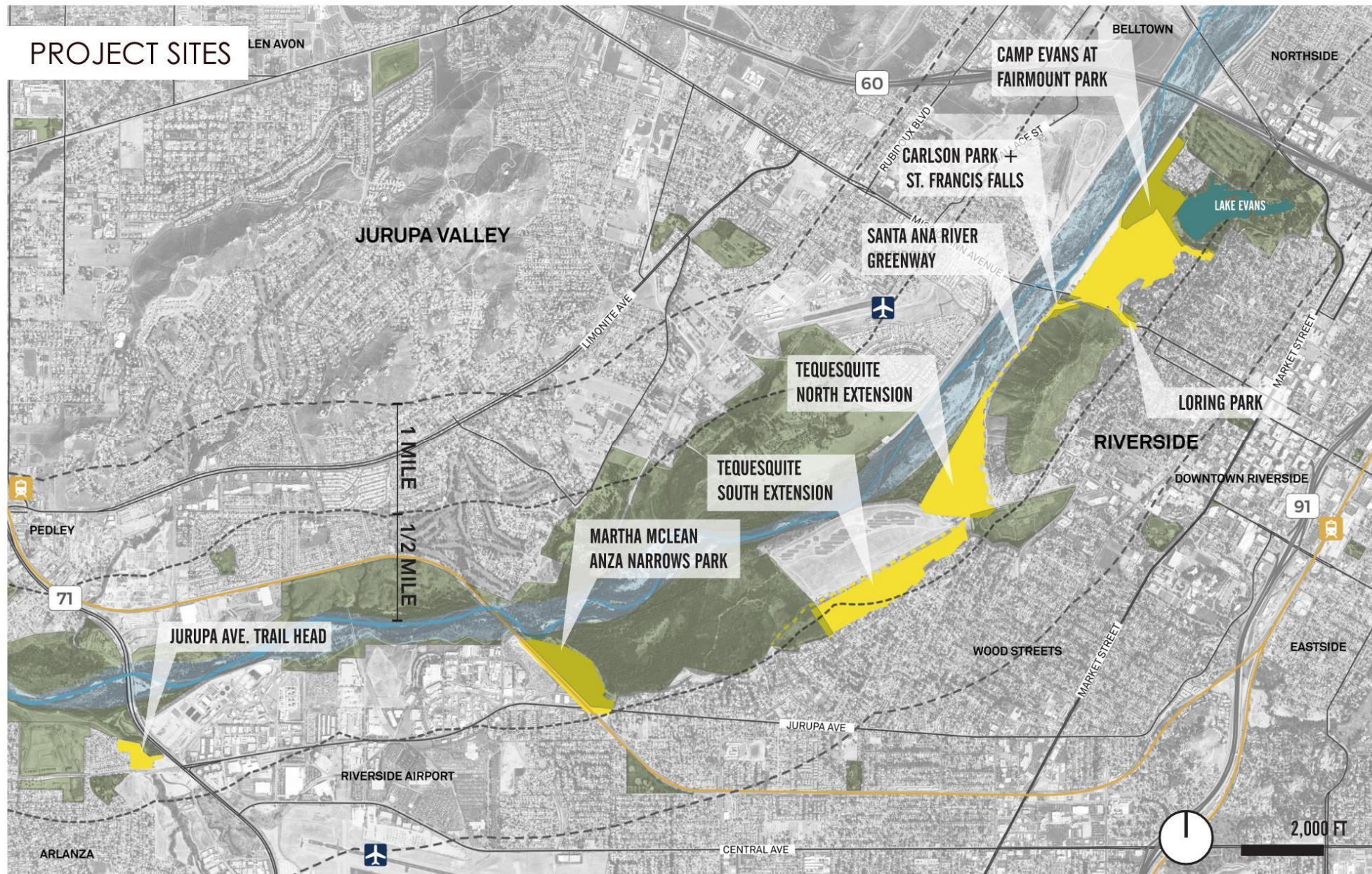
Increasing recreational opportunities, educational use, public access, water quality protection, enhancement of wildlife habitat, serving as a gateway to the river, creating a recreation destination, and economic opportunity.

This project was made possible with funding from the Coastal Conservancy.

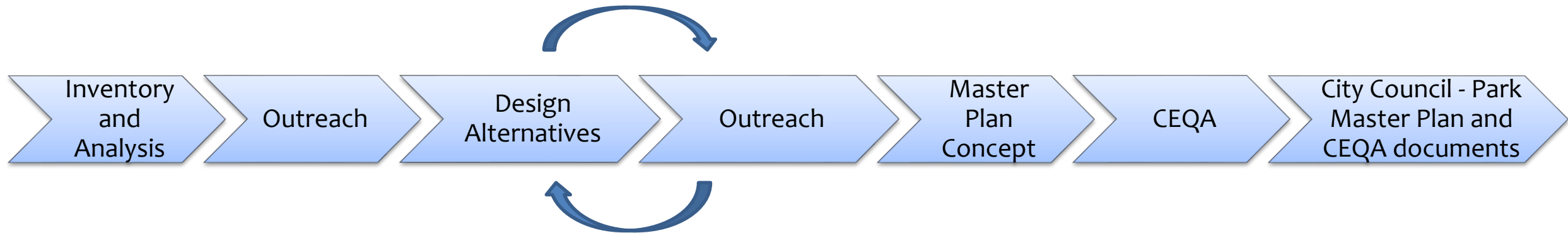


The Coastal Conservancy is a California state agency, established in 1976, to protect and improve natural lands and waterways, to help people get to and enjoy the outdoors, and to sustain local economies along California's coast. It acts with others to protect and restore, and increase public access to, California's coast, ocean, coastal watersheds, and the San Francisco Bay Area. Its vision is of a beautiful, restored, and accessible coast for current and future generations of Californians.

PROJECT SITES



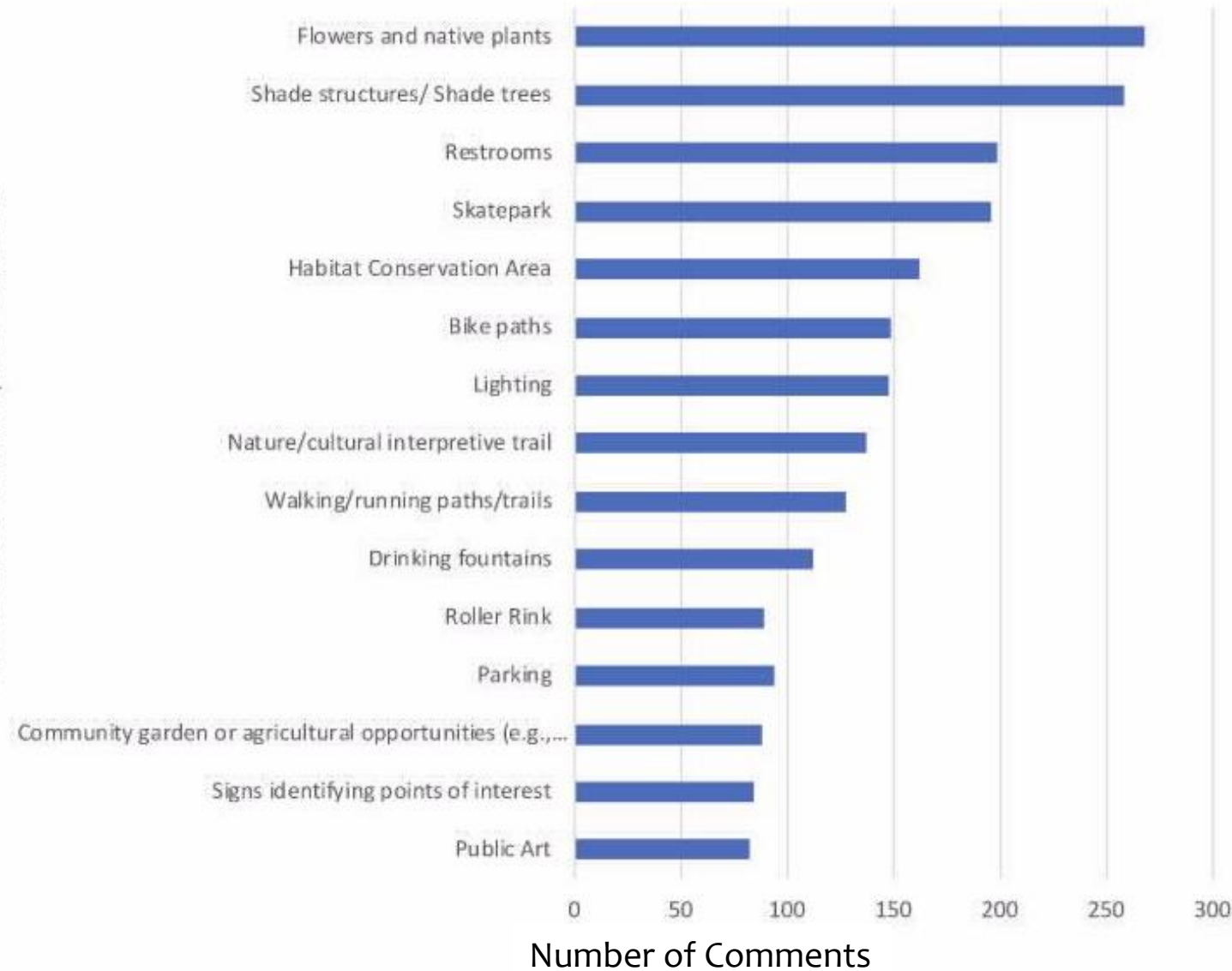
Master Plan Process



Outreach Summary

Amenities and Improvements

Top 15 Amenities between all Park Sites



Follow-up Requested

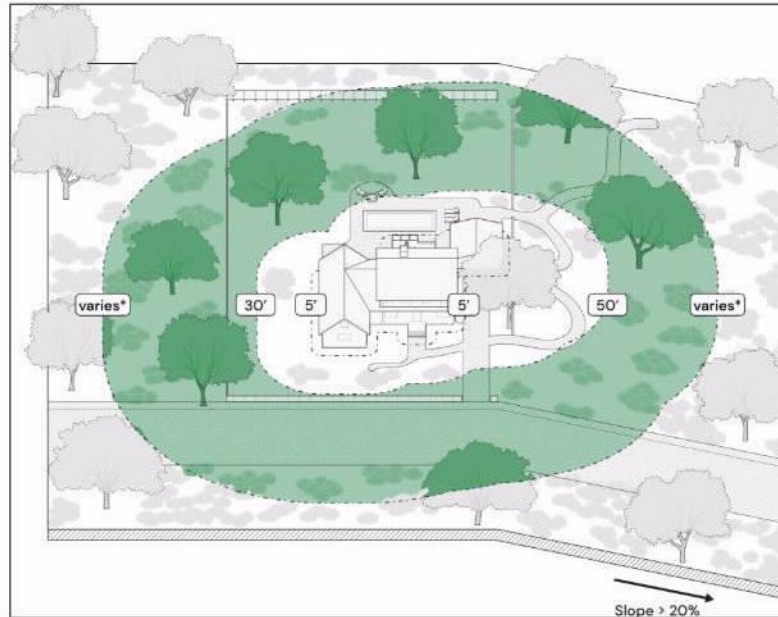
- Santa Ana River reports
- Fire
- Parking
- Traffic
- Skate Park Noise
- Motorized vehicles on trail
- Homeless
- Habitat and Open Space
- Maintenance

Santa Ana River Reports

- Santa Ana River Parkway & Open Space Plan (2018) - https://scc.ca.gov/files/2018/06/SARPOSP_Plan_FINAL.pdf.
- 2003 & 2009 City of Riverside Blue Ribbon Committee's Santa Ana River Task Force - recommended recreational improvements and nature education in park and open space areas along the river. The reports can be viewed online.
 - 2003: <https://aquarius.riversideca.gov/clerkdb/0/doc/101680/Page1.aspx>
 - 2009: <https://aquarius.riversideca.gov/clerkdb/0/doc/108342/Page1.aspx>

Fire

- Cal Fire, County and City of Riverside regulations
- Fire-wise and Cal Fire fuel modification approved plant lists
- On-going coordination with City Fire Department



Parking

- City of Riverside Municipal Code Chapter 17.188
 - 1 space per 8,000 sf of active recreational area
 - 1 space per acre of passive recreational area
- ADA Parking will be provided at all the proposed new parking lots to meet Municipal Code
- Preferential Parking Zones – by petition after

Parking

Tequesquite North and South:

208 spots proposed (131.9 spots needed per code)

- **Tequesquite North:** 57.4 spots needed per code
 - Roller rinks: 12.8 spots (x2)
 - Pickle ball courts: 6 spots
 - Active recreational uses
(Water play, playground, flex meadow): 7 spots
 - Passive recreational uses: 18.8 spots
- **Tequesquite South:** 74.5 spots needed per code
 - Active recreational uses : 31.9 spots
 - Passive recreational uses: 42.6 spots

Camp Evans:

88 spots proposed (33.9 spots needed per code)

- Pickle ball courts: 6 spots
- Active recreational uses (playground): 1.8 spots
- Passive recreational uses: 26.1 spots

Parking

Jurupa Avenue Trailhead:

31 spots proposed (3.8 spots needed per code)

- Active recreational uses: 2.8 spots
- Passive recreational uses: 1 spot

Martha Mclean Anza Narrows Park:

63 spots proposed - Realigning 46 spots (35.6 spots needed per code)

- Active recreational uses: 3.8 spots
- Passive recreational uses: 31.8 spots

Carlson Park and St Francis Falls:

41 spots that will be unchanged

- Passive recreational uses: 0 new spots (renovation of existing developed park)

Loring Park:

1 spot proposed (2.45 spots needed per code)

- Passive recreational uses: 2.45 spots
- Camp Evans parking, 0.3 miles away



Traffic

- Traffic is a component of CEQA environmental analysis which is underway
- Mitigation will be provided for any impacts
- City's Traffic Engineering Division is providing project review and feedback for traffic concerns

Skate Park Noise

- Noise impacts are included in the CEQA work currently underway.
- Mitigation will be incorporated into the project if needed.

Prevention of motorized vehicles on the trail

- Gates, bollards, boulders, landscaping, bioswales, berms and similar site improvements



Homeless

- Office of Homeless Solutions
- Public Safety Engagement Team & new wildlands team
- Park and Neighborhood Specialists (Police Department)
- Ordinance banning camping in wildlands-urban interface

Habitat & Open Space

Site	Proposed New Developed Acres	New Planting Area Acres	Acres to Remain As-is	Acres Total site
Camp Evans	21	33	55	110
Loring Park	0.4	2	0	2.4
Tequesquite North	12	8	43	64
Tequesquite South	10	14	35	60
Martha McLean	4	3	33	39
Jurupa Ave Trailhead	2	3	3	8
	50	64	169	282

- 79% of overall acreage left as-is or native/low water planting
- 21% of overall acreage developed for active recreation

Annual Maintenance Cost Projection

	Annual Maintenance
Camp Evans	\$275,000
Loring	\$12,000
St. Francis/Carlson*	\$4,500
Tequesquite North	\$211,000
Tequesquite South	\$212,000
Greenway	\$83,000
Martha McLean*	\$115,000
Jurupa Trailhead	\$32,000

* Carlson Park and Martha McLean are existing developed parks already being maintained. Costs projected are in addition to current costs.

Updated Construction Cost Estimate

	Construction	Design, Engineering, Project Admin, Construction Admin	Total
Camp Evans	\$58,500,000	\$15,500,000	\$74,000,000
Loring	\$4,000,000	\$1,100,000	\$5,100,000
St. Francis/Carlson	\$2,000,000	\$600,000	\$2,600,000
Tequesquite North	\$40,600,000	\$10,700,000	\$51,300,000
Tequesquite South	\$69,000,000	\$18,300,000	\$87,300,000
Greenway	\$7,800,000	\$2,100,000	\$9,900,000
Martha McLean	\$16,100,000	\$4,300,000	\$20,400,000
Jurupa Trailhead	\$6,200,000	\$1,700,000	\$7,900,000

Project Prioritization

- Projects to be prioritized based on community input
- Grants and other funding opportunities

Celebrate World Rivers Day

- Celebrate World Rivers Day with us on Saturday, September 24, 2022, 9 a.m. – 1 p.m.
 - Bike ride from Ryan Bonaminio Park to festivities at Martha McLean Anza Narrows Park.
 - Volunteer event
- Bring us your ideas on how to “put the river back in Riverside”
- Vote on top Riverside Gateway Park project



PROJECT INFORMATION AND CONTACTS

Website: <https://riversidegatewayparks.com/>

Call: (951) 228-0022

Email: info@riversidegatewayparks.com



STRATEGIC PLAN ALIGNMENT

Strategic Priority 1 – Arts, Culture and Recreation:

- Goal 1.3: improve parks, recreational amenities, open space, and trail development, and fulfill critical lifecycle and facility maintenance needs
- Goal 1.4: to prioritize safety at parks, trails, arts, cultural and recreational facilities

Strategic Priority 2 – Community Wellbeing:

- Goal 2.3: strengthen neighborhood identities and improve community health and the physical environment through amenities and programs that foster an increased sense of community and enhanced feelings of pride and belonging citywide, and

Strategic Priority 5 – High Performing Government:

- Goal 5.3: enhance communication and collaboration with community members to improve transparency, build public trust, and encourage shared decision-making.

Cross-Cutting Threads



Community Trust



Fiscal Responsibility



Sustainability &
Resiliency



Equity



Innovation

RECOMMENDATIONS

That the Park and Recreation Commission provide feedback on the Riverside Gateway Parks Master Plans and receive report for file.