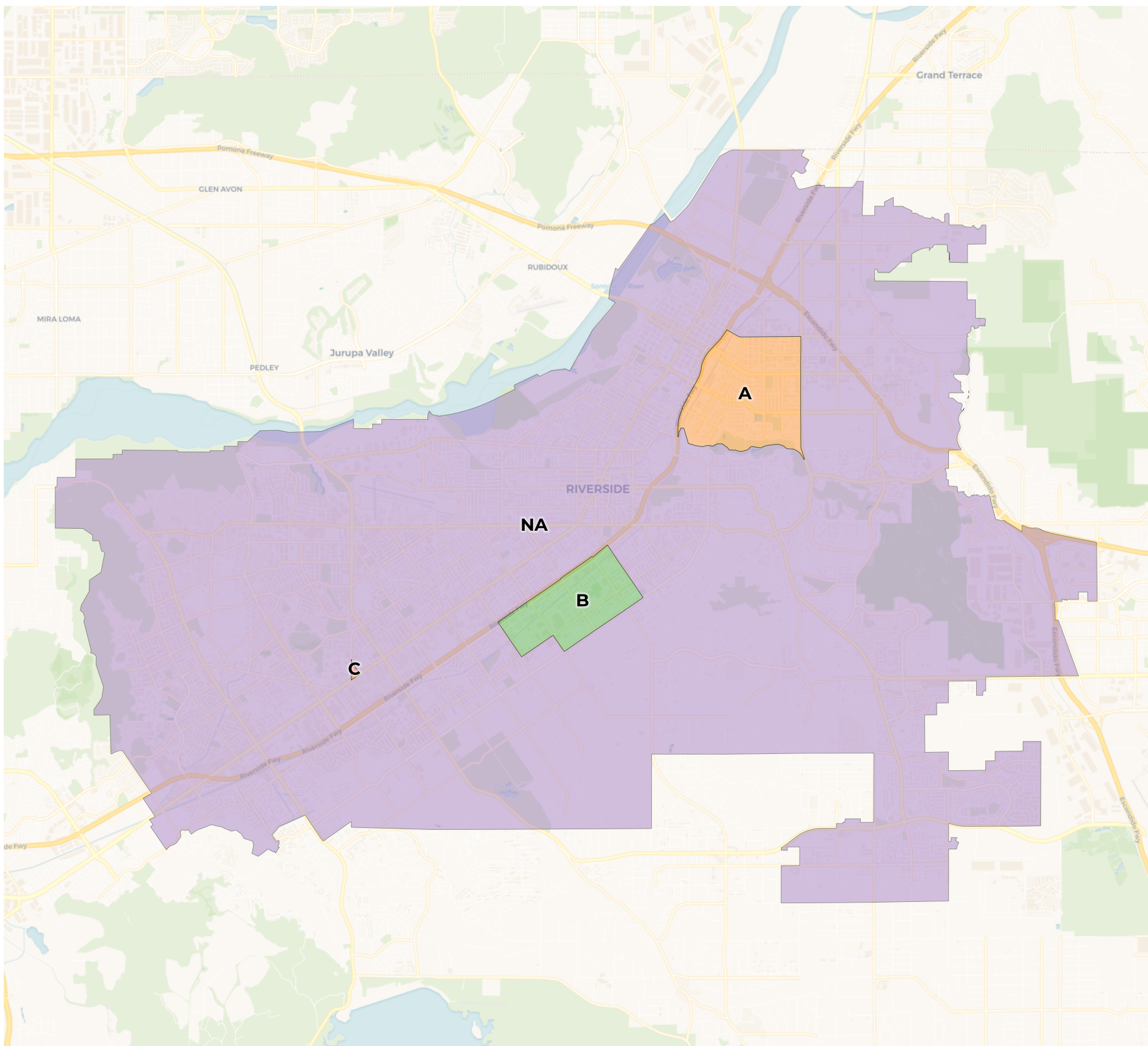


**REDISTRICTING
PARTNERS**

City of Riverside
Accelerated residents



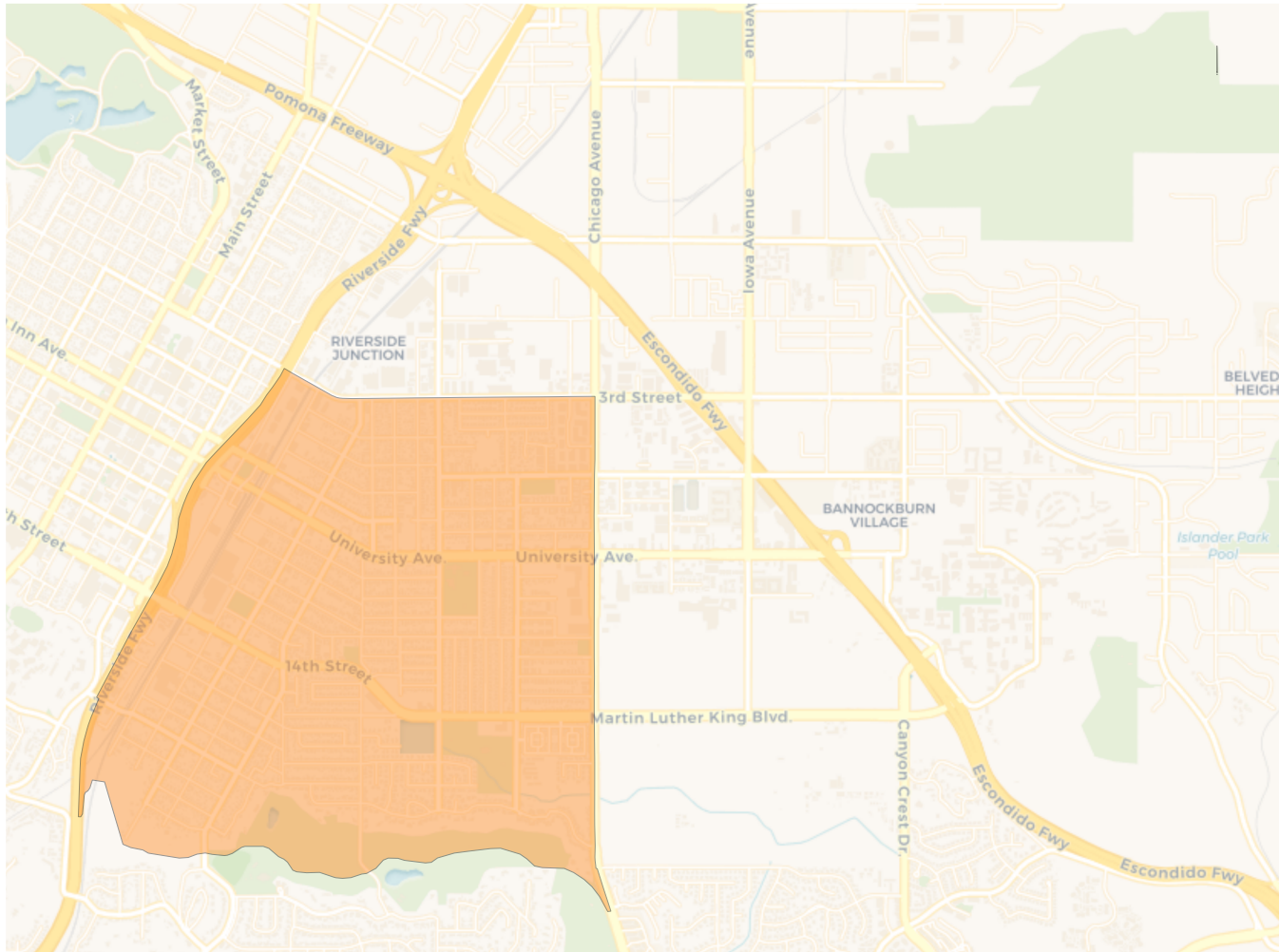
2020 Census

	A	B	C	NA
Population	17,612	5,666	0	292,973
Deviation	-61,451	-73,397	-79,063	213,910
Deviation %	-77.7%	-92.8%	-100.0%	270.6%
Other	2,044	583	0	98,941
Other %	11.6%	10.3%	0.0%	33.8%
Latino	13,536	4,663	0	154,915
Latino %	76.9%	82.3%	0.0%	52.9%
Asian	508	174	0	21,759
Asian %	2.9%	3.1%	0.0%	7.4%
Black	1,524	246	0	17,358
Black %	8.7%	4.3%	0.0%	5.9%

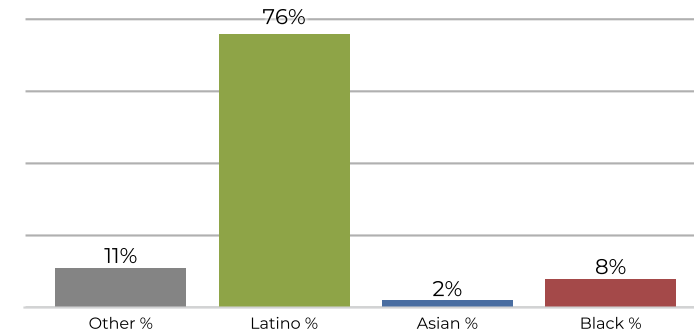
Citizen Voting Age Population (CVAP)

	A	B	C	NA
Total CVAP	8,822	3,550	0	204,165
Other CVAP	1,368	570	0	83,944
Other CVAP %	15.5%	16.1%	0.0%	41.1%
Latino CVAP	5,940	2,743	0	90,417
Latino CVAP %	67.3%	77.3%	0.0%	44.3%
Asian CVAP	248	104	0	16,485
Asian CVAP %	2.8%	2.9%	0.0%	8.1%
Black CVAP	1,266	133	0	13,319
Black CVAP %	14.4%	3.7%	0.0%	6.5%

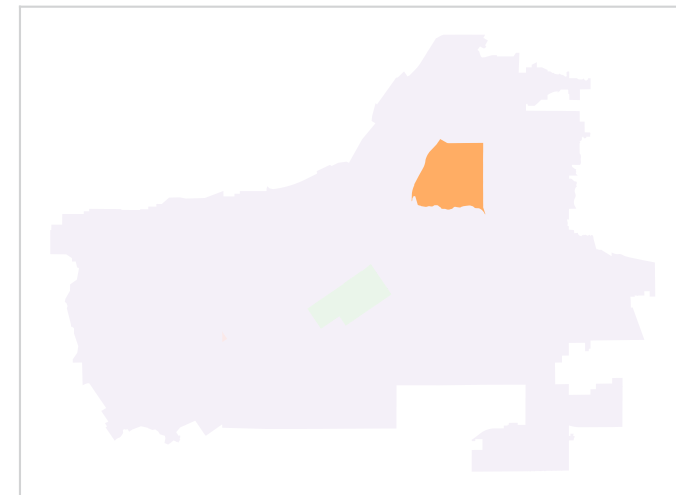
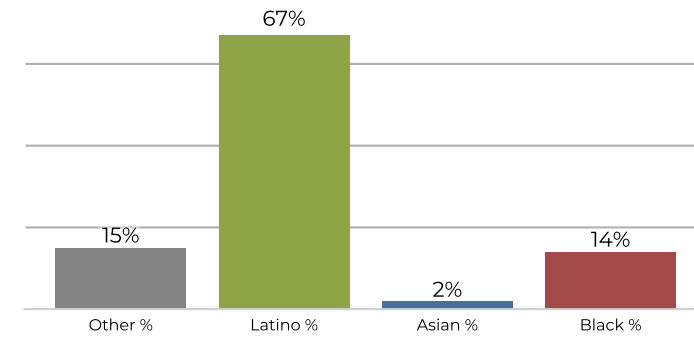
District A



2020 Census

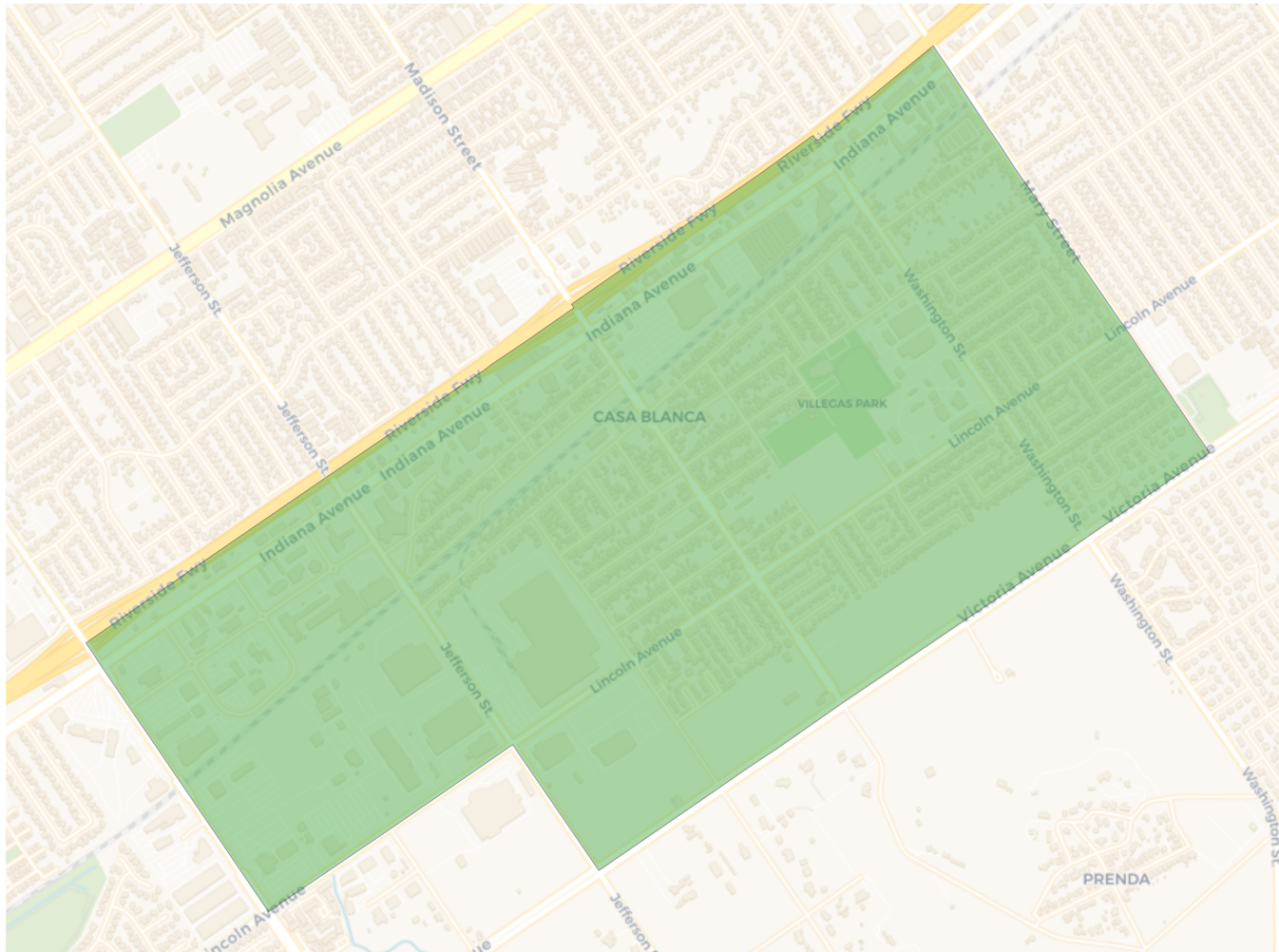


Citizen Voting Age Population

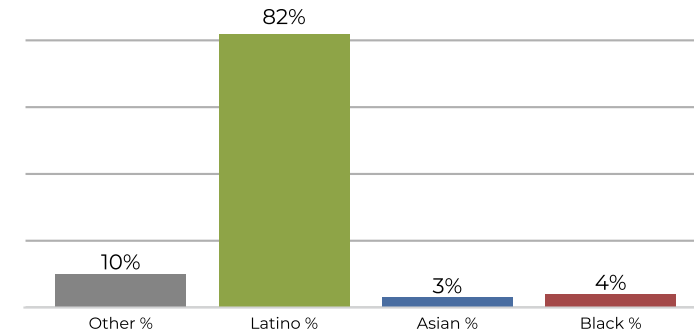


Population	Deviation	Deviation %	Other	Other %	Latino	Latino %	Asian	Asian %	Black	Black %
17,612	-61,451	-77.7%	2,044	11.6%	13,536	76.9%	508	2.9%	1,524	8.7%
Total CVAP	Other CVAP	Other CVAP %	Latino CVAP	Latino CVAP %	Asian CVAP	Asian CVAP %	Black CVAP	Black CVAP %		
8,822	1,368	15.5%	5,940	67.3%	248	2.8%	1,266	14.4%		

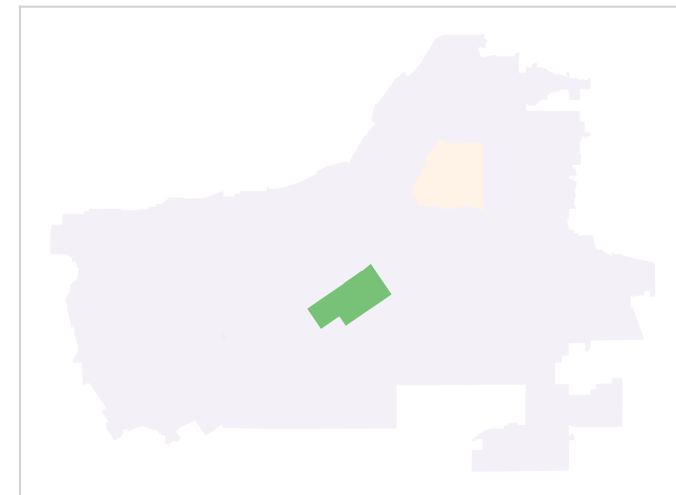
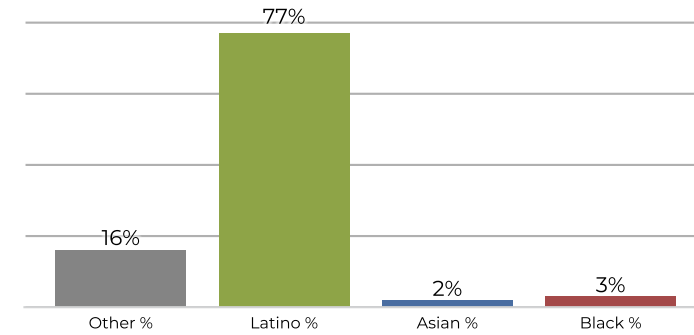
District B



2020 Census

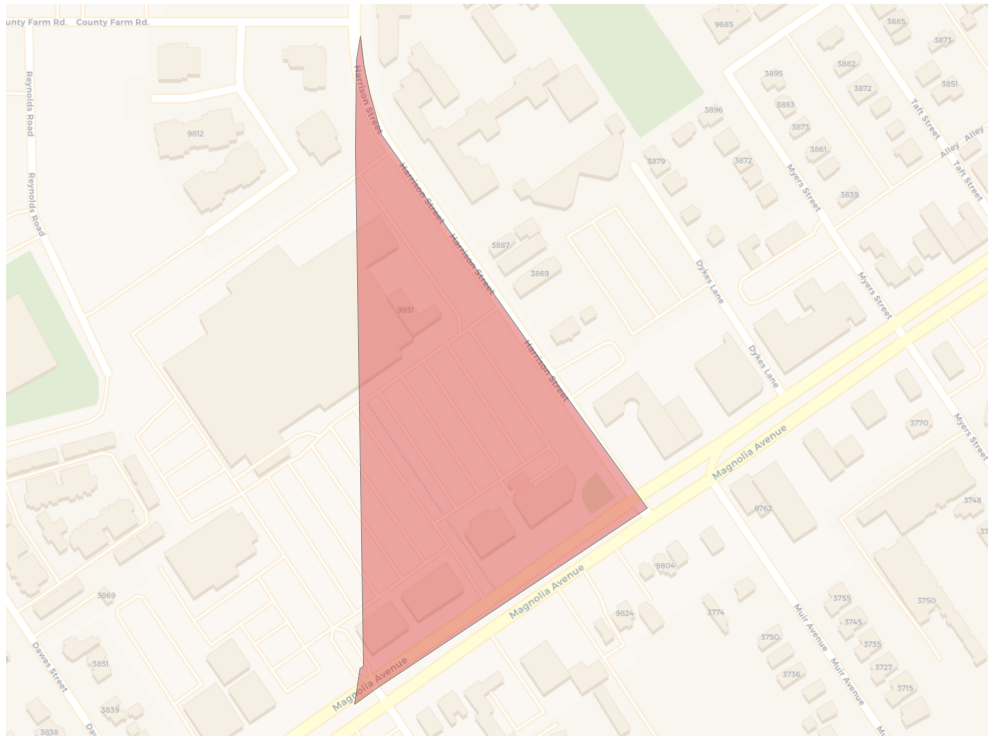


Citizen Voting Age Population



Population	Deviation	Deviation %	Other	Other %	Latino	Latino %	Asian	Asian %	Black	Black %
5,666	-73,397	-92.8%	583	10.3%	4,663	82.3%	174	3.1%	246	4.3%
Total CVAP	Other CVAP	Other CVAP %	Latino CVAP	Latino CVAP %	Asian CVAP	Asian CVAP %	Black CVAP	Black CVAP %		
3,550	570	16.1%	2,743	77.3%	104	2.9%	133	3.7%		

District C



Population %	Other %	Latino %	Latino %	Asian %	Asian %	Black %	Black %
0	0	0.0%	0	0.0%	0	0.0%	0.0%

