

# SB9 - Applicability and Constraints

**REVISED**

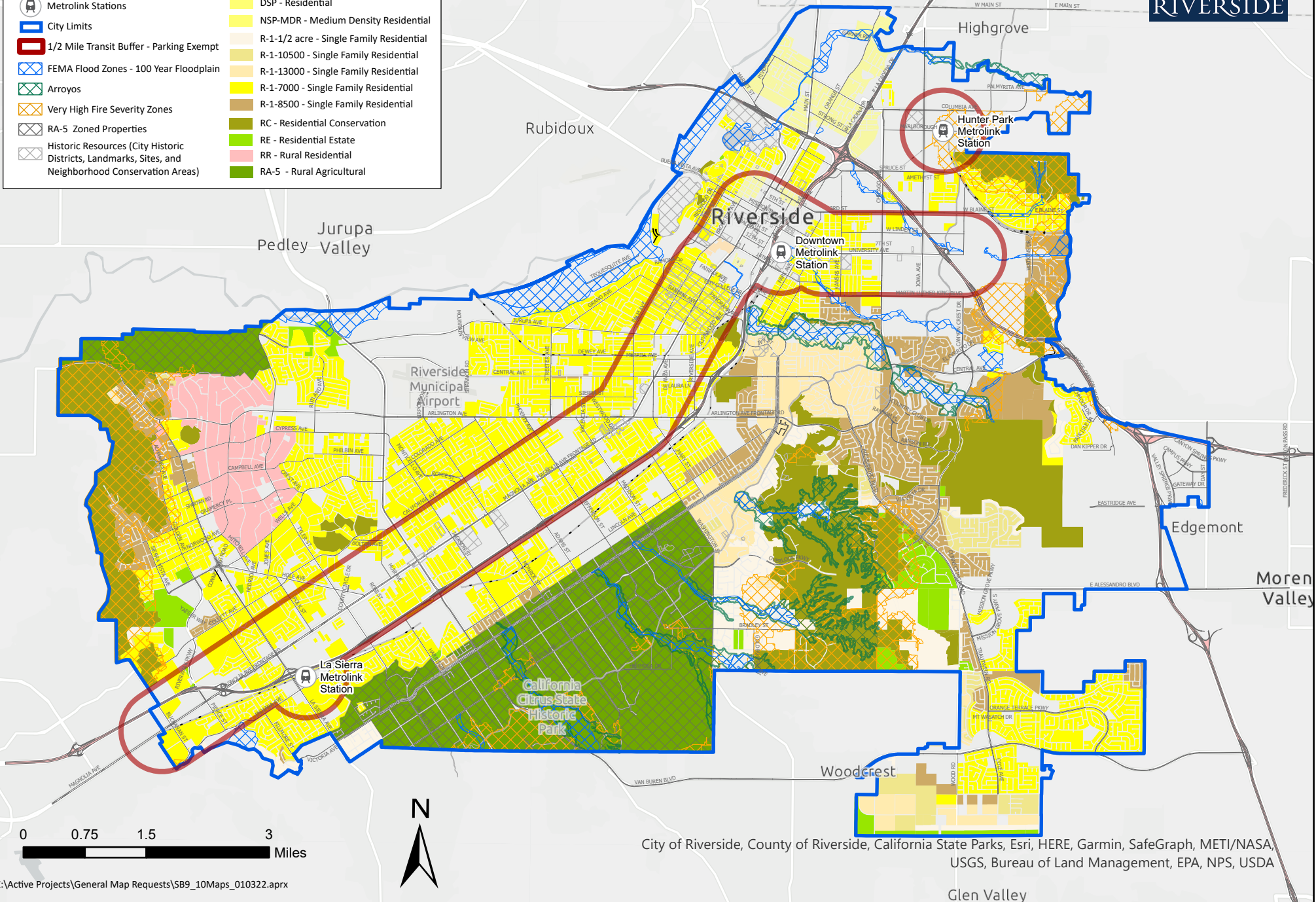
Date: 2-8-22  
Item No.: 23

Grand Terrace



**LEGEND**

Metrolink Stations	<b>Single Family Zones</b>
City Limits	DSP - Residential
1/2 Mile Transit Buffer - Parking Exempt	NSP-MDR - Medium Density Residential
FEMA Flood Zones - 100 Year Floodplain	R-1-1/2 acre - Single Family Residential
Arroyos	R-1-10500 - Single Family Residential
Very High Fire Severity Zones	R-1-13000 - Single Family Residential
RA-5 Zoned Properties	R-1-7000 - Single Family Residential
Historic Resources (City Historic Districts, Landmarks, Sites, and Neighborhood Conservation Areas)	R-1-8500 - Single Family Residential
	RC - Residential Conservation
	RE - Residential Estate
	RR - Rural Residential
	RA-5 - Rural Agricultural



City of Riverside, County of Riverside, California State Parks, Esri, HERE, Garmin, SafeGraph, METI/NASA, USGS, Bureau of Land Management, EPA, NPS, USDA