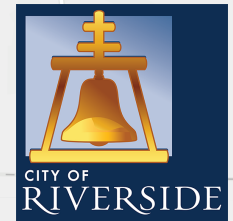


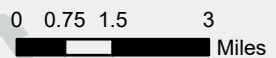
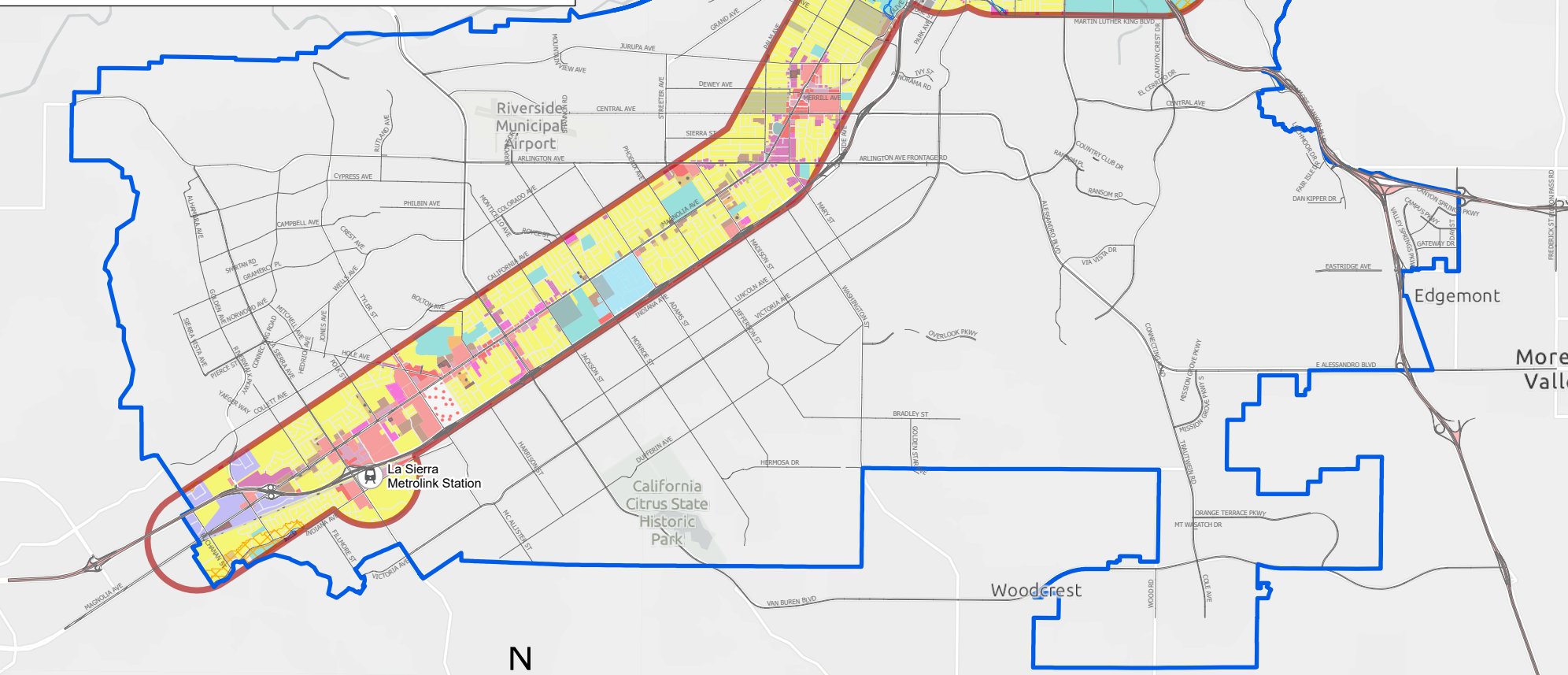
# SB10 - Applicability and Constraints

Grand Terrace



## LEGEND

- Metrolink Stations
- City Limits
- 1/2 Mile Transit Buffer - Parking Exempt
- FEMA Flood Zones - 100 Year Floodplain
- High and Very High Fire Severity Zones
- Historic Resources
- Zoning Codes**
- BMP - Business Manufacturing Park - CSO
- BMP - Business and Manufacturing Park
- CBUSP - CBU Specific Plan
- CBUSP-CR - CBU SP - Cultural Resources
- CG - Commercial General
- CR - Commercial Retail
- CRC - Commercial Regional Center
- DSP-AS - Almond Street District
- DSP-HC - Health Care District
- DSP-JC - Justice Center District
- DSP-MSG - Market Street Gateway District
- DSP-NC - Neighborhood Commercial
- DSP-PPO - Prospect Place Office District
- DSP-RC - Raincross District
- DSP-RES - Raincross Residential District
- I - Industrial
- MU - N - Mixed-Use Neighborhood
- MU - U - Mixed-Use Urban
- MU - V - Mixed-Use Village
- O - Office
- PF - Public Facilities
- R-1-1/2 acre - Single Family Residential
- R-1-7000 - Single Family Residential
- R-3-1500 - Multi-Family Residential
- R-3-2000 - Multi-Family Residential
- R-3-2500 - Multi-Family Residential
- R-3-3000 - Multi-Family Residential
- R-3-4000 - Multi-Family Residential
- R-4 - Multi-Family Residential
- RC - Residential Conservation
- RCHSP - Riverside Community Hospital SP
- RE - Residential Estate
- ROW
- RWY - Railroad



City of Riverside, County of Riverside, Esri, HERE, Garmin, SafeGraph, METI/NASA, USGS, Bureau of Land Management, EPA, NPS, USDA