



ARCHITECTURAL DESIGN OF MUSEUM RENOVATION AND EXPANSION

Museum of Riverside

City Council
December 12, 2023

RiversideCA.gov

1

GENERAL GOALS

- **Preservation**
 - 1912 Post Office Building
 - Central downtown location
- **Purpose-Built New Construction**
 - Visitors first!
 - Updated ADA access
 - Versatile new galleries
 - Enlarged and improved Nature Lab
 - Roof terrace
 - Dedicated classroom
 - Support spaces, loading dock



2

RiversideCA.gov

2

FEATURES

- **Streetscape**
 - Adds and improves green space
 - Addition does not overwhelm historic structure
- **Purposeful choices**
 - Equitable access
 - Plantings chosen for educational potential
 - Mission Inn Avenue setback remains available for programming
 - Integrity of historic building features maintained



3

RiversideCA.gov

3

FEATURES

- **Human Scale**
 - Significant effort to ensure that the expansion does not overwhelm the historic building at the Mission Inn Avenue elevation.



4

RiversideCA.gov

4

FEATURES

- **Balancing Past and Present**

- The design maintains attractive proportions between old and new structures
- Small updates and upgrades will be made to the historic structure without “restoring” elements removed during previous interventions



5

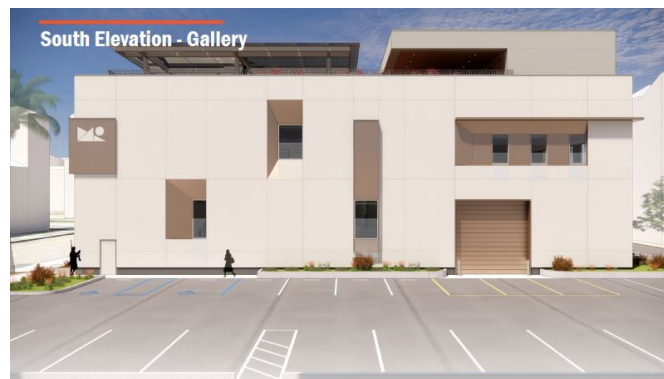
RiversideCA.gov

5

FEATURES

- **Activating the Exterior**

- Windows serve as “lenses” directed toward important local sites
- The rectangular structure is visually enhanced by the window array yet retains its ability to be enlivened by light projections on the exterior.



6

RiversideCA.gov

6

FEATURES

- **“Lenses” onto the City**
 - While not obvious to the casual observer, the idea of the building’s apertures being designed to aim toward key City locations is one the staff can interpret during tours.



7

RiversideCA.gov

7

FEATURES

- **Making the Most of the Site**
 - The site footprint will remain essentially the same.
 - The photovoltaic array forms the shade structure for the roof terrace.
 - Landscaping enhances all elevations.



8

RiversideCA.gov

8

FEATURES

- **Interior Richness**

- New Orange Street entrance will provide clear sightlines to admissions desk and how to reach upper floors
- A double-height glass wall to feature collections provides immediate visual impact



9



RiversideCA.gov

9

FEATURES

- **Attention to Detail**

- Spacious integration of old and new structures
- New Nature Lab prominently located on first floor
- Historic south façade symbolically indicated in new Orange Street lobby



10



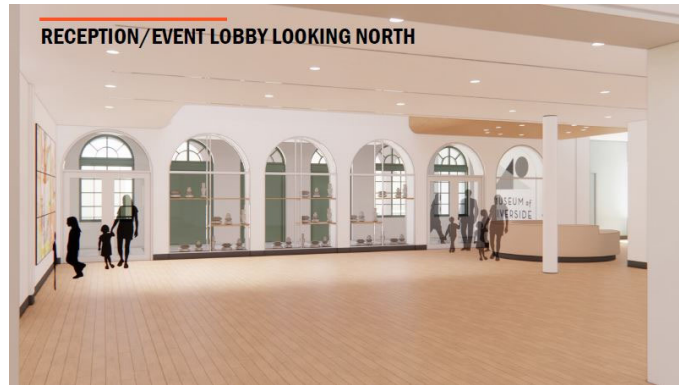
RiversideCA.gov

10

FEATURES

- **Flexibility**

- Historic arches become exhibition cases
- Doors within arches help maintain gallery environments
- Open space within historic structure available for both exhibitions and events
- Lobby provides tour orientation space



11

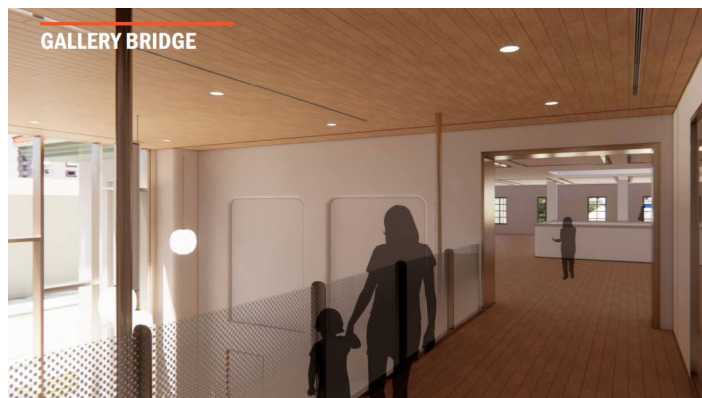
RiversideCA.gov

11

FEATURES

- **Transitions**

- Historic and new structures linked by a bridge, a spacious elevator, and a staircase
- Neutral fixtures and finishes that won't compete with exhibition content and changing exhibition designs



12

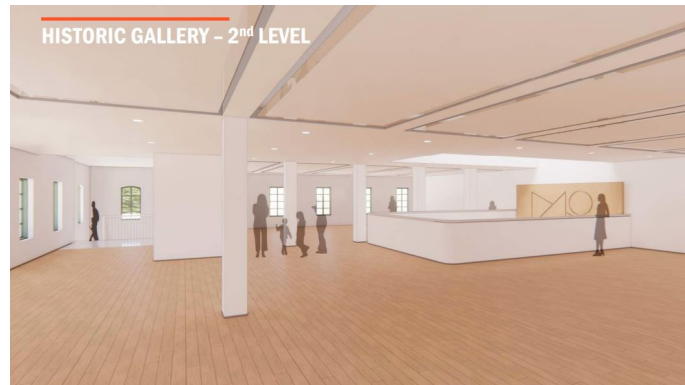
RiversideCA.gov

12

FEATURES

- **Managing Use of Space**

- The historic structure will have a less closely controlled environment, requiring staff to select exhibitions with care
- Impactful vertical opening from first floor up to historic skylight



13

RiversideCA.gov

13

FEATURES

- **Roof Terrace**

- The roof terrace will be open whenever the Museum is open
- Plantings will be chosen for their teaching value
- The terrace will also be a gathering space for programs and events of up to 80-100 people



14

RiversideCA.gov

14

GOALS AND OUTCOMES

- **The Building**

- An animated downtown site
- A leading downtown event participant



15



RiversideCA.gov

15

GOALS AND OUTCOMES

- **The Programs**

- Exhibitions
- Exhibition-based public programs
- Stand-alone programs
- Pre-K to gray education
- Collaborative programs
- Community events



16



RiversideCA.gov

16

GOALS AND OUTCOMES

- **Exhibitions**

- About Riverside
- Relevant to Riversiders' lives
- Support curriculum
- Informed by public input and public surveys



17



RiversideCA.gov

17

GOALS AND OUTCOMES

- **Possible Exhibition Topics**

- Where Are All the Dinosaurs? Riverside's Prehistoric Past
- Robotics Now
- Architecture in Riverside
- Backyard Natural Wonders
- What River? The Story of the Santa Ana
- Cut! Riverside at the Movies
- Our Immigrant Background
- Riverside Noir: The Dark Side of Our Fair City



18



RiversideCA.gov

18

GOALS AND OUTCOMES

- **Exhibitions**
 - Interactive
 - Interdisciplinary
 - Multi-generational



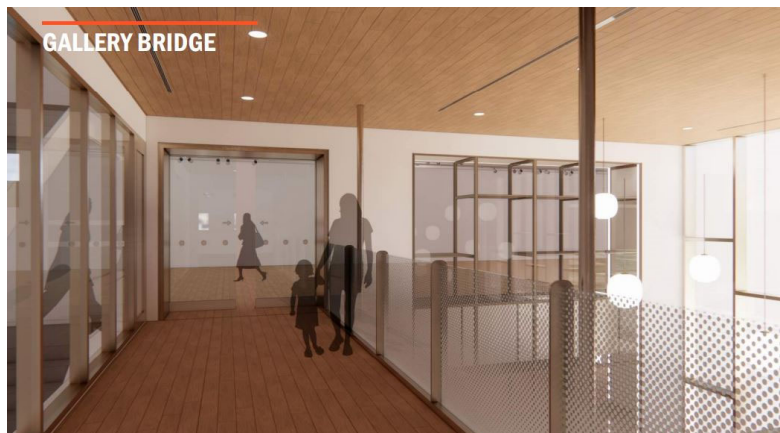
19

RiversideCA.gov

19

GOALS AND OUTCOMES

- **Exhibitions**
 - Two-story exhibit wall for Riverside's unique stories
 - Tech portals to more information
 - Well scripted
 - Beautifully designed



20

RiversideCA.gov

20

GOALS AND OUTCOMES

- **Exhibitions to Reopen**
 - I M / Migration
 - Foodways
 - Riverside's Stories
 - New Nature Lab



21

RiversideCA.gov

21

GOALS AND OUTCOMES

Exhibition-Based Public Programs



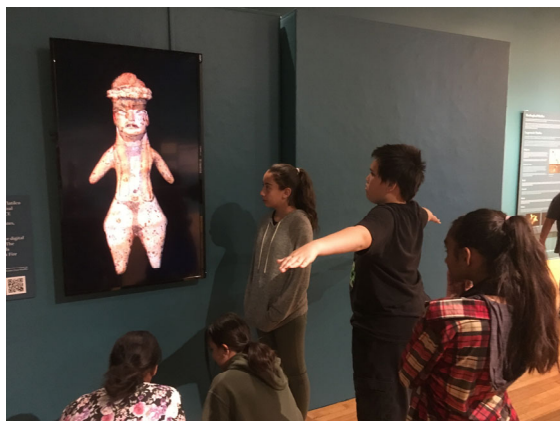
22

RiversideCA.gov

22

GOALS AND OUTCOMES

Pre-K Through 12 Education



23

RiversideCA.gov

23

GOALS AND OUTCOMES

Collaborative Programs



24

RiversideCA.gov

24

GOALS AND OUTCOMES

Community Events



25

RiversideCA.gov

25

GOALS AND OUTCOMES

Community Events



26

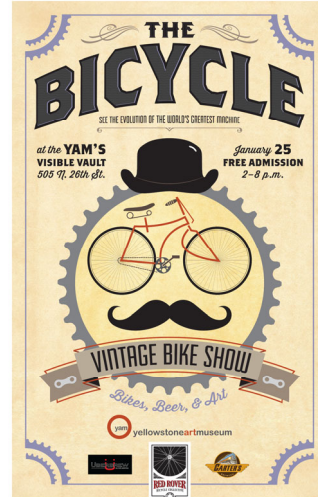
RiversideCA.gov

26

GOALS AND OUTCOMES

- **Community Events Focused on What People Love ...**

- Having fun
- Music, food, & drink
- Being together
- Creativity
- Being astonished
- Energy
- Optimism



27

RiversideCA.gov

27

COMMUNITY ENGAGEMENT

The project has and will continue to benefit from ...

- Community engagement sessions
- Peer review
- Board and commission support



28

RiversideCA.gov

28

PATH FORWARD

The construction schedule is yet to be determined.

Anticipated reopening in 2026.



MUSEUM of
RIVERSIDE



29

RiversideCA.gov

29

STRATEGIC PLAN ALIGNMENT

Strategic Priority: Arts, Culture, and Recreation

Action 1.1.3: Complete the Museum of Riverside renovation and expansion project to enrich the Mission Inn Avenue cultural corridor.

Cross-Cutting Threads



Community Trust



Fiscal Responsibility



Sustainability &
Resiliency



Equity



Innovation



30

RiversideCA.gov

30

RECOMMENDATIONS

That the City Council:

1. Approve the design approach for the renovation and expansion of the Museum of Riverside's downtown site at 3580 Mission Inn Avenue;
2. By at least five affirmative votes, authorize the Chief Financial Officer, or designee, to record an interfund transfer from General Fund Infrastructure Reserve to the Capital Outlay Fund in the amount of \$10,000,000;

... continued ...
31



RiversideCA.gov

31

RECOMMENDATIONS

That the City Council:

3. By at least five affirmative votes, authorize the Chief Financial Officer, or designee, to appropriate \$10,000,000 in the Capital Outlay Fund, Museum Expansion and Renovation project account; and

... continued ...



32

RiversideCA.gov

32

RECOMMENDATIONS

That the City Council:

4. Determine the project is exempt from the California Environmental Quality Act (CEQA) review pursuant to Sections 15301 (Existing Facilities), 15331 (Historic Resource Restoration/Rehabilitation), and 15332 (In-fill Development), as it constitutes rehabilitation and less than 10,000 square foot increase in size of an existing historic resource within an urbanized area that is consistent with the Secretary of the Interior's Standards for the Treatment of Historic Properties.



33

RiversideCA.gov