



PICKLEBALL COURTS UPDATES

Parks, Recreation and Community Services Department

Park and Recreation Commission

October 16, 2023

BACKGROUND

Total Number of Pickleball Players in the US by Year

Total Players (millions)

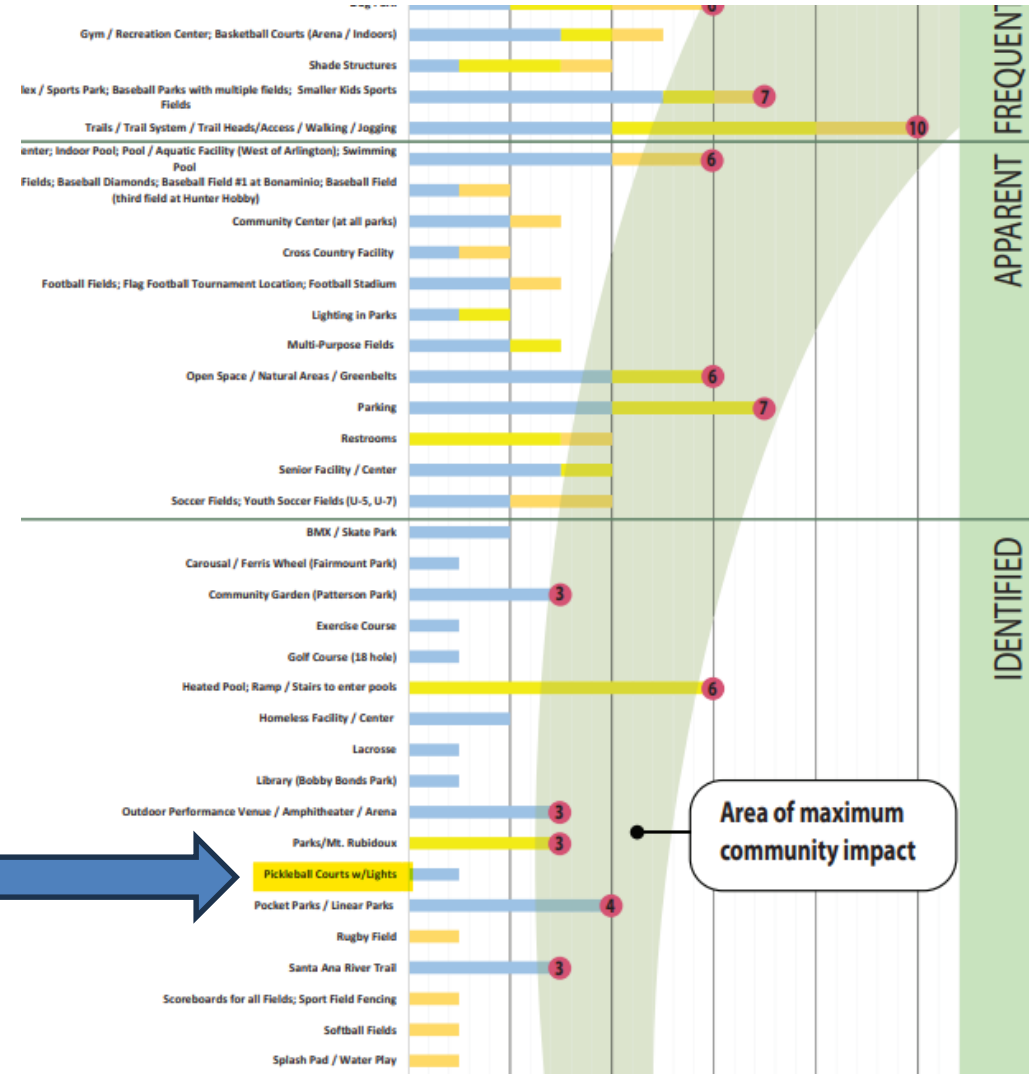


- Paddle sport – mix between tennis, badminton and ping-pong
- Four pickleball courts fit in a typical tennis court
- A minimum of 8 courts are required for tournament use (100 players for 1-day tournament)
- Fastest Growing Sport in US

BACKGROUND

2019 Park System Master Plan Community Survey

- Pickleball Courts Low Priority
- Identified only by Special Interest
- Developed an Overlay Plan
- Low Impact to identified need





18-34

Largest age bracket of pickleball players (28.8% of total)

BACKGROUND

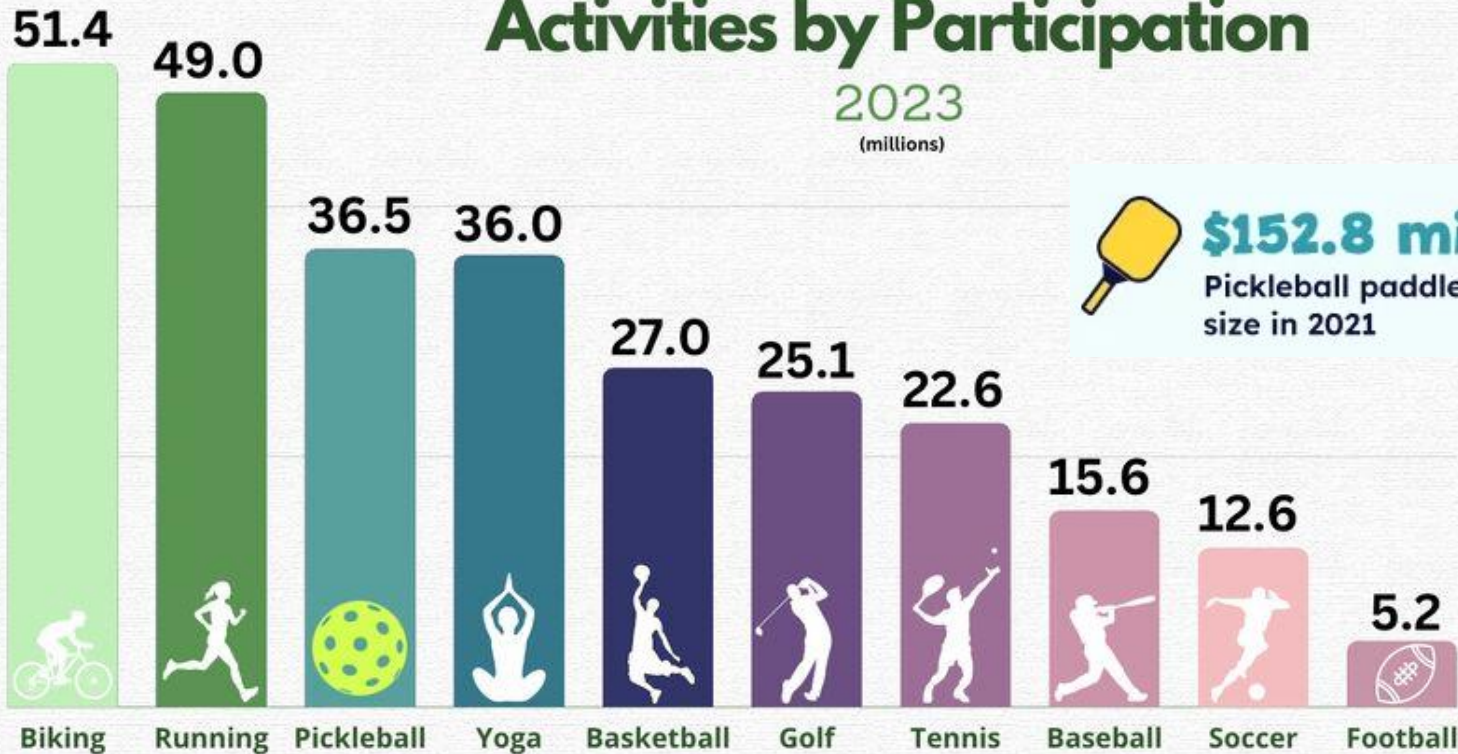


36.5 million

Number of pickleball players in the US

Activities by Participation

2023
(millions)



\$152.8 million

Pickleball paddle market size in 2021



158.6%

Pickleball's average growth rate over the last 3 years



10,320

Number of places to play pickleball in the US



7.7%

Forecasted compound annual growth rate through 2028



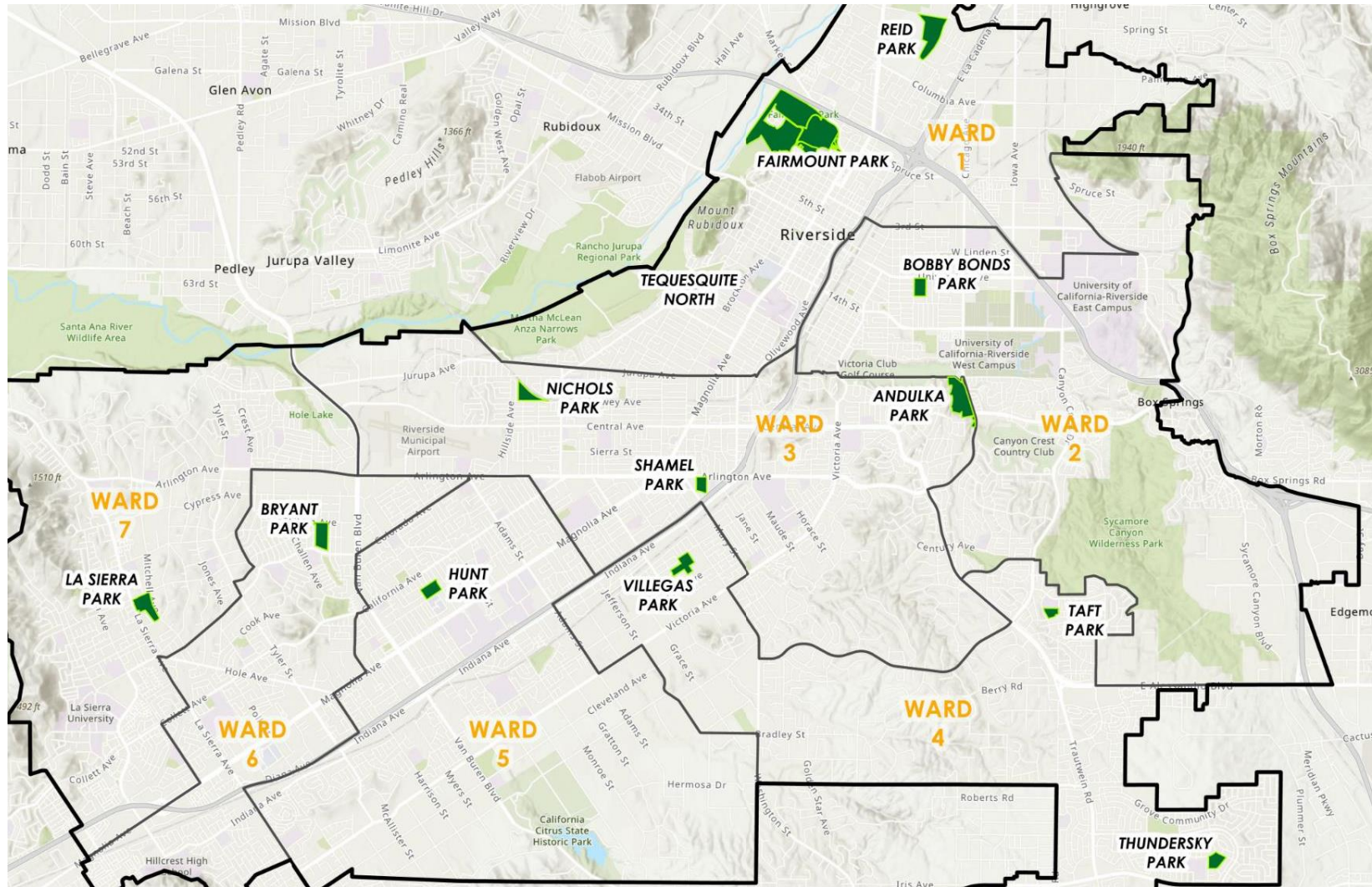
NATIONAL STANDARDS

- Recommended national pickleball service level
 - **2 Pickleball courts per 1,000 residents**
 - **Riverside Ranks 105 of largest 200 Cities (Popular, interest & Access)**
- NRPA nation wide survey of existing public Pickleball courts
 - Outdoor = 1 ct. / 14,713 res.
 - Indoor = 1 ct. / 16,813 res.
 - **Total Courts = 2 cts. / 15,763 residents**
- City of Riverside existing service level
 - Outdoor = 1 ct. / 26,730 residents
 - Indoor = 1 ct. / 20,048 residents
 - **Total Courts = 2 cts. / 23,389 residents**

***Existing courts = 28
To meet Rec. serv.
Lev. = 260***



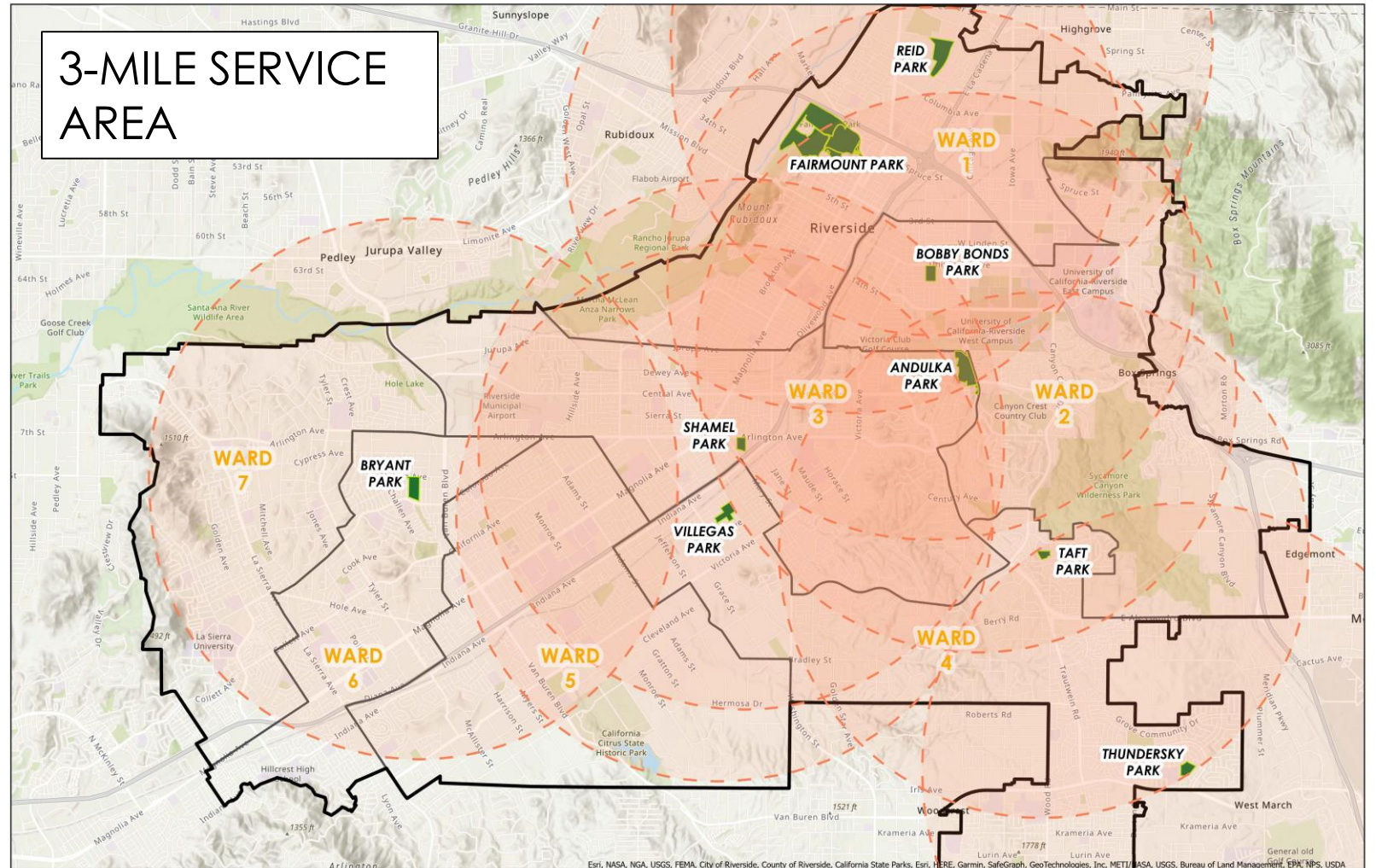
PARKS WITH EXISTING COURTS



EXISTING TENNIS COURTS & SERVICE GAPS

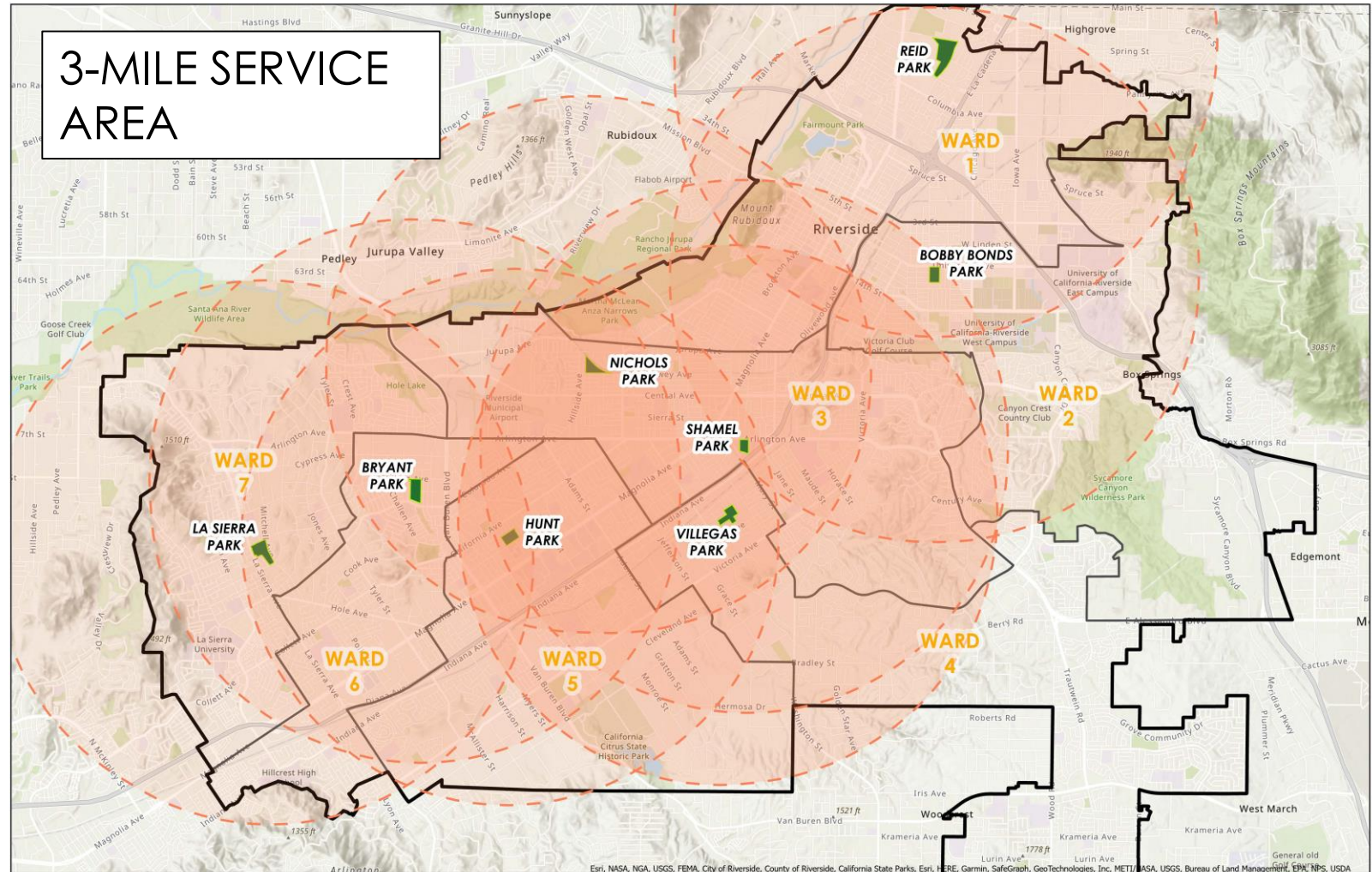
PARK NAME	TENNIS
ANDULKA PARK	10
ARLINGTON PARK	2*
BOBBY BONDS PARK	1
BRYANT PARK	2
FAIRMOUNT PARK	2
CAMP EVANS	
HUNT PARK	
LA SIERRA PARK	
MYRA LINN PARK	
NICHOLS PARK	
REID PARK	3
SHAMEL PARK	2
TAFT PARK	2
TEQUESQUITE NORTH	
THUNDERSKY PARK	2
VILLEGAS PARK	2
TOTAL	26

*Not Shown, Omit in 2024



EXISTING PICKLEBALL COURTS & SERVICE GAPS

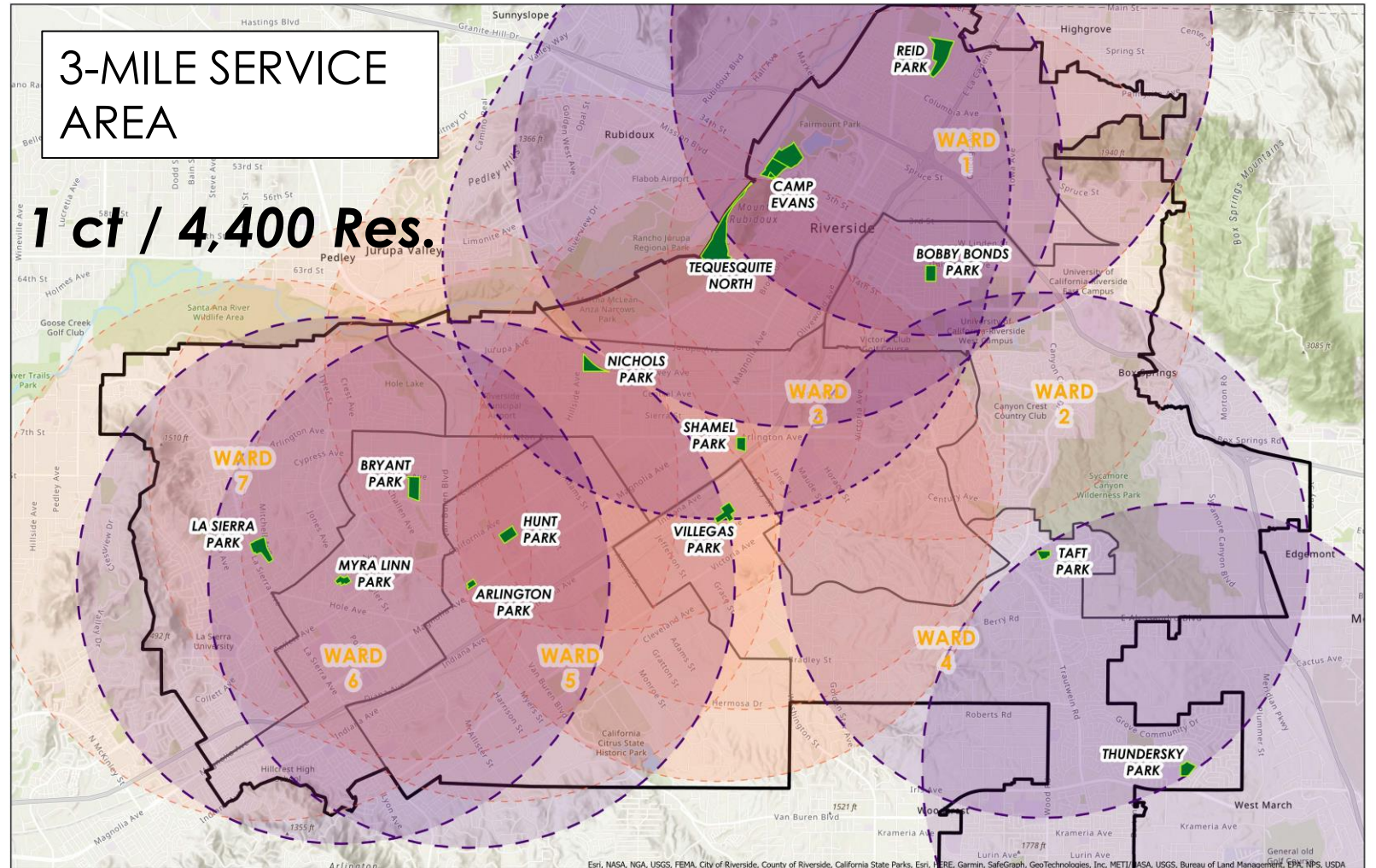
PARK NAME	PICKLEBALL (INDOOR)	PICKLEBALL (OUTDOOR)
ANDULKA PARK		
ARLINGTON PARK		
BOBBY BONDS PARK	4	
BRYANT PARK		4
FAIRMOUNT PARK		
CAMP EVANS		
HUNT PARK	2	
LA SIERRA PARK	2	
MYRA LINN PARK		
NICHOLS PARK	2	
REID PARK	2	
SHAMEL PARK		4
TAFT PARK		
TEQUESQUITE NORTH		
THUNDERSKY PARK		
VILLEGAS PARK	4	4
TOTAL	16	12
TOTAL (ALL)	28	28



PROPOSED FUTURE PICKLEBALL COURTS

PARK NAME	PICKLEBALL (INDOOR)	PICKLEBALL (OUTDOOR)
ANDULKA PARK		
ARLINGTON PARK		9 ^F
BOBBY BONDS PARK	4	
BRYANT PARK		4
FAIRMOUNT PARK		
CAMP EVANS		4 ^F
HUNT PARK	2	
LA SIERRA PARK	2	
MYRA LINN PARK		4 ^F
NICHOLS PARK	2	
REID PARK	2	6-8 ^F ***
SHAMEL PARK		4
TAFT PARK		4 ^F **
TEQUESQUITE NORTH		12 ^F
THUNDERSKY PARK		4 ^F ***
VILLEGAS PARK	4	4

F: Future **Overlay 2024 ***Overlay FY 24/25

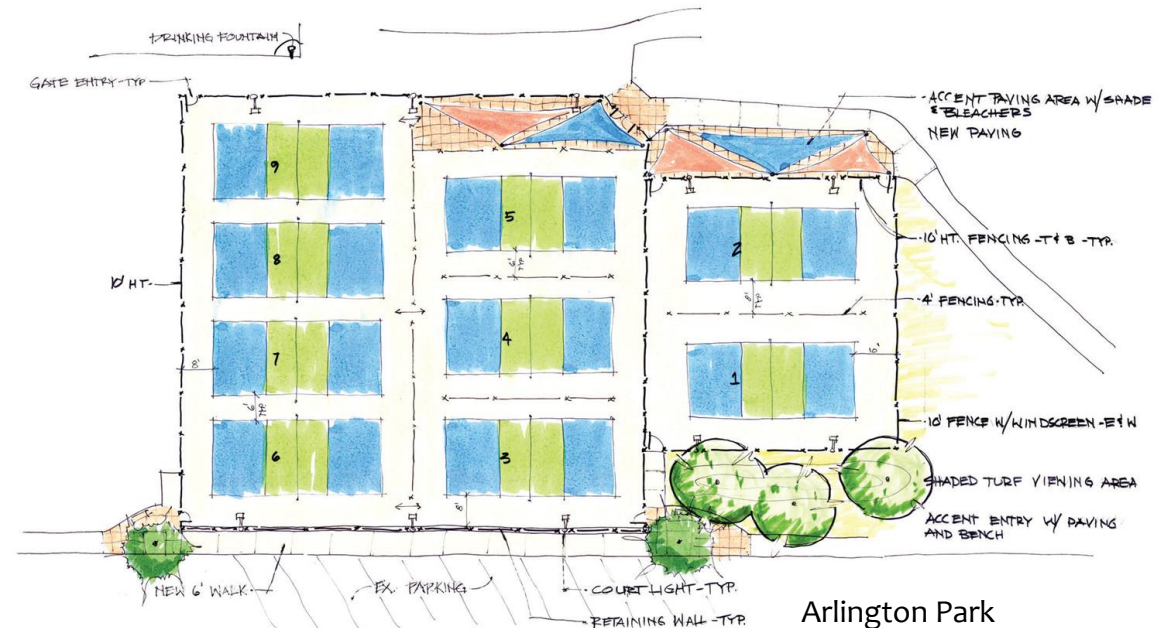


Total Courts = 73 To meet Recommended service level = 260 ⁹



STATUS OF FUNDED PROJECTS

- Myra Linn completed by end of 2023 – 4cts.
- Arlington Park Pickleball complex completed by Summer 2024 – 9cts.
- Overlay pickleball 2024
 - Taft Park – 4cts.
- Overlay pickleball 2025
 - Reid Park – 8cts.
 - Thundersky Park – 4cts.



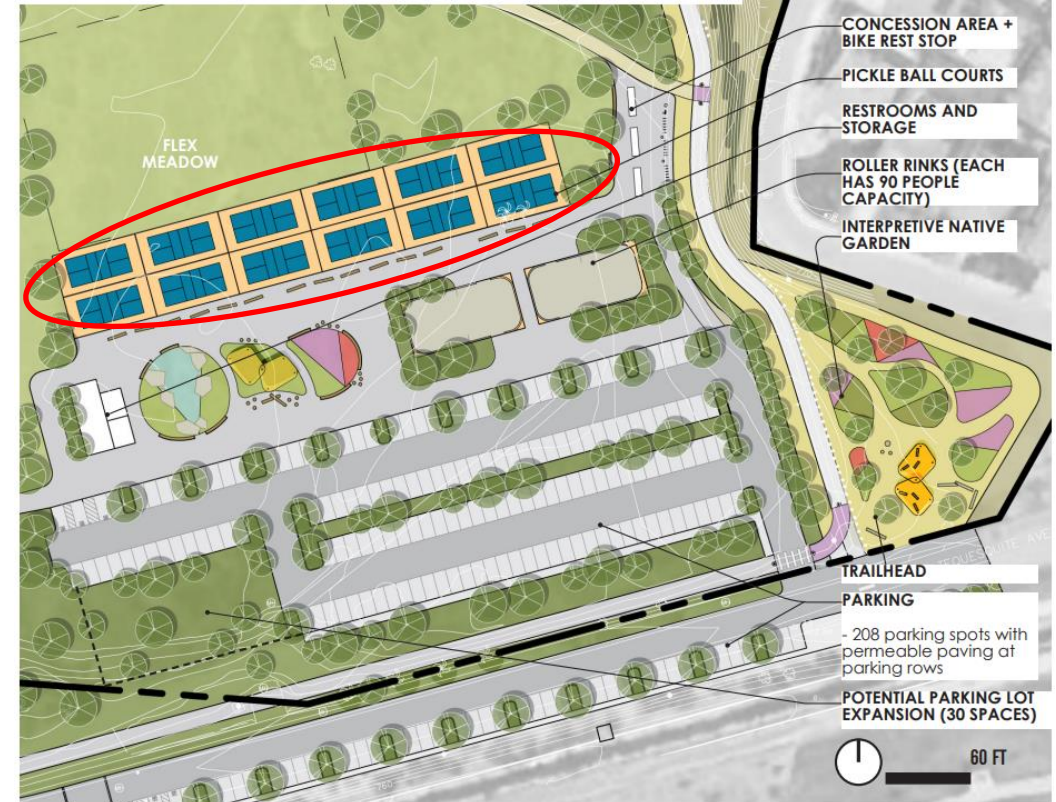
Existing courts = 28 Doubling to 57 by end 2025

PROPOSED FUTURE

(Not yet funded)



Camp Evans at Fairmount Park



Tequesquite North Site

STRATEGIC PLAN ALIGNMENT

Envision Riverside 2025 Strategic Plan Priorities

#1 Arts, Culture and Recreation

Goal 1.3 Improve parks, recreational amenities, open space, and trail development, and fulfill critical lifecycle and facility maintenance needs.

Goal 1.2. Enhance equitable access to arts, culture and recreational service offerings and facilities.

Cross-Cutting Threads



Community
Trust



Fiscal
Responsibility



Sustainability &
Resiliency



Equity



Innovation

RECOMMENDATION

That the Park and Recreation Commission receive an update and provide feedback on the status of the progression of Pickleball courts within the City's parks.