



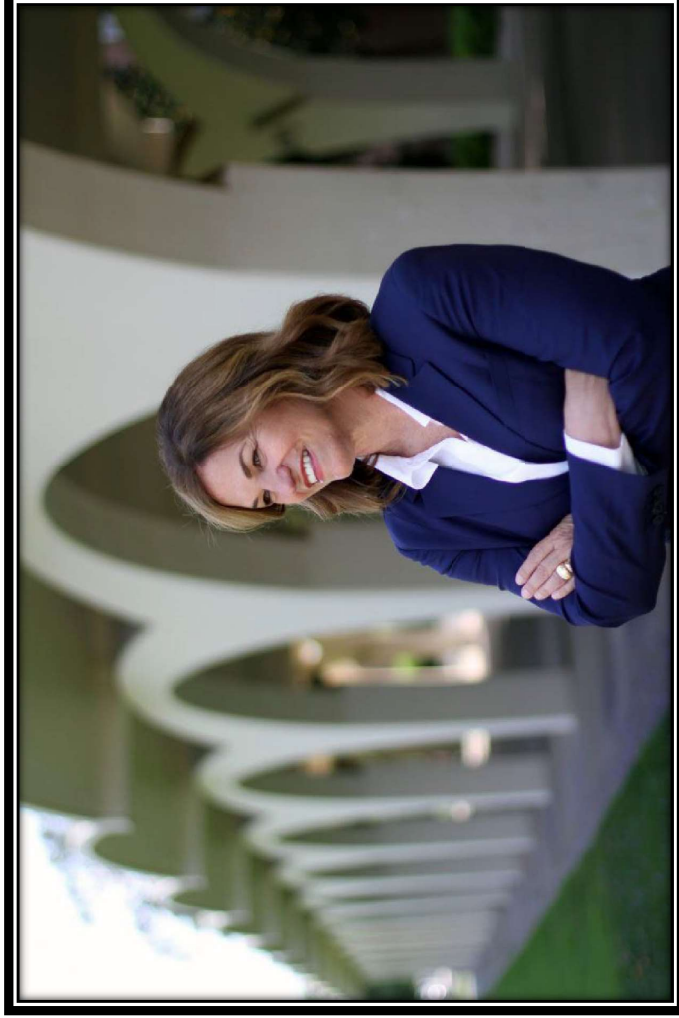
# **PUBLIC BENEFITS & ENERGY EFFICIENCY COMMUNITY WORKING GROUP**

---

Meeting #1 – July 31, 2025

# WELCOME

Mayor Patricia Lock Dawson



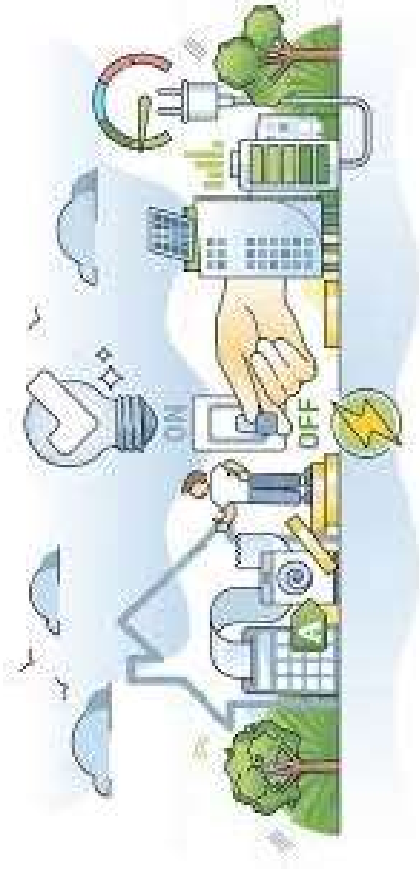
# WORKING GROUP MEMBERS

Mayor Patricia Lock Dawson	City Council
Vice RPU Board Chair Dr. Brian Siana	Riverside Board of Public Utilities
RPU Board Member Tom Evans	Riverside Board of Public Utilities
Dr. Matt Barth	UCR
Nick Adcock	Chamber of Commerce
Mark Dowling	Inland Valleys Assn of Realtors
Victor Cao	California Apartment Association
David Hahn	Habitat for Humanity
Rose Mayes	Fair Housing Council of Riverside
Tom Donahue	Resident
Faustino Alvarez	Community Access Center
Chris Trujillo	Industry Expert - Heatpumps
Christopher Kern	Compelle media
Michael Berger	Compelle media



# ROUNDTABLE /ICEBREAKER

1. Introduce yourself – Name and organization
2. What is your understanding of Energy Efficiency?
3. What is your experience with Energy Efficiency?
  - At home
  - At work
  - Any other environment



# OBJECTIVE OF THE GROUP

Answer the question of what programs and activities do the community recommend we do with Public Benefit Funds and how RPU should spend down the accumulated \$34 million in Public Benefit Funds

## Working Group

Establishing overall program goals  
Providing input to help guide detail analysis and future program development

Summer-Fall 2025

## Consulting Services

Detail program analysis  
Community Survey

Fall 2025-Summer 2026

## A Way Forward

Conclude the Analysis  
Community & Stakeholder Meetings  
Final Plan & Strategy

Summer 2026

# COMMUNITY WORKING GROUP = ADVISORY

The Community Working Group is intended to provide ideas, comments, express questions, and provide community frameworks around how RPU's Public

Benefits Funds should be spent.

---

**Final decisions on the expenditures, programs, structures, and budgets will be established by the RPU Board and City Council.**

# PUBLIC BENEFIT FUND SOURCE OF AUTHORITY

**Public Benefits funds were established in 1996 by Assembly Bill 1890 (AB 1890)**

## Goals

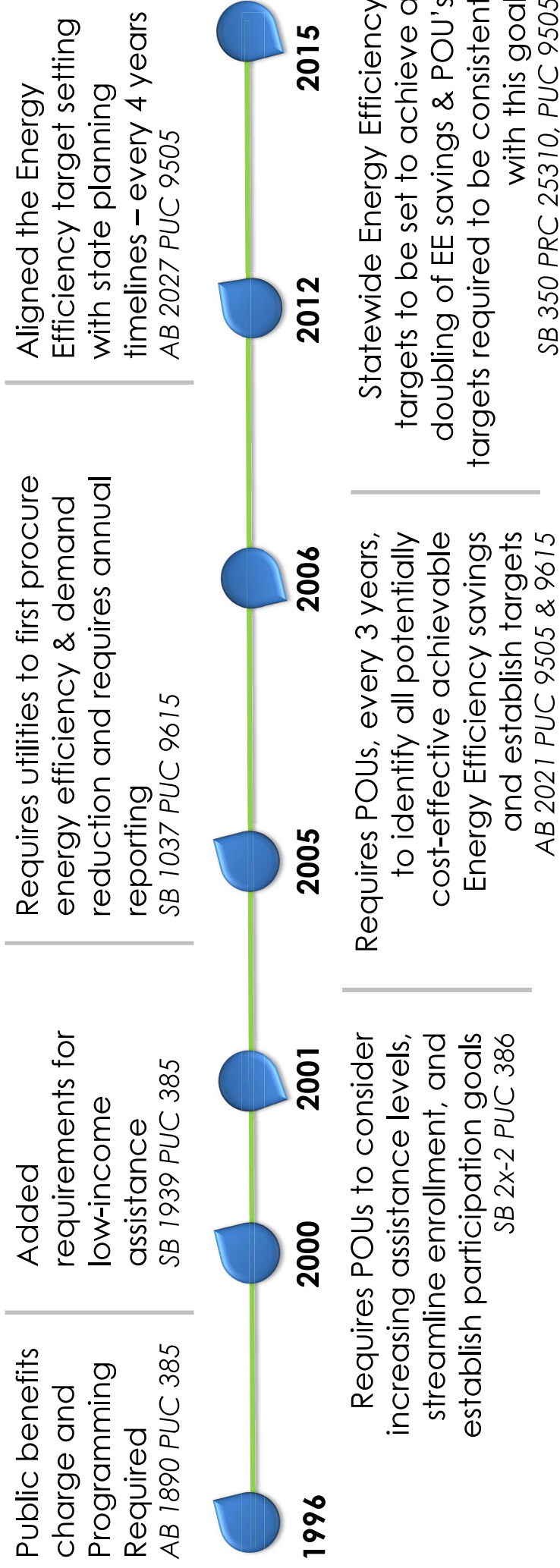
1. Provide cost-beneficial energy efficiency services to customers
2. Offer customers meaningful information on the costs and benefits of energy efficiency measures
3. Reduce market barriers to investments in energy efficient products and services
4. Create a sustainable and competitive energy efficiency services market

## Created a Non-bypassable Customer Charge to provide for customer programs

1. Minimum charge of 2.85%
2. Residential and commercial customers
3. Average residential customer pays ~ \$3.00 per month
4. Average commercial customer pays ~ \$10.00 per month
5. RPU collects approximately \$10 million annually



# CHANGES & ADDITIONS OVER TIME



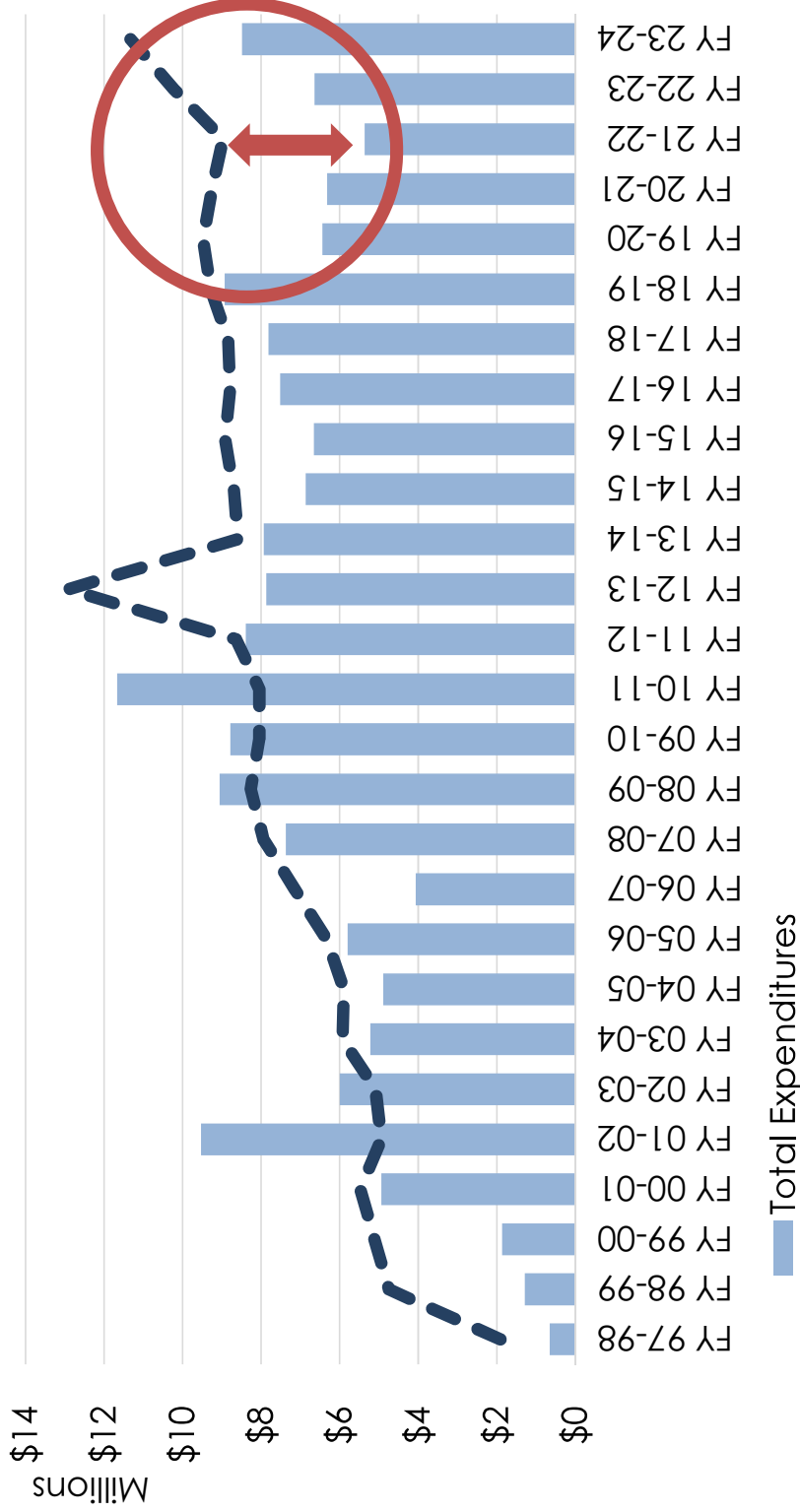
# PUBLIC BENEFIT FUND ALLOWED SPENDING CATEGORIES

## Limited Use of the Funding

1. Cost effective demand side management to promote energy efficiency and energy conservation
2. New investment in renewable energy resources and technologies
3. Research, development, and demonstration programs for the public interest to advance science or technology which is not adequately provided by competitive and regulated markets
4. Services provided for low-income electricity customers, including, but not limited to, energy efficiency services, education, weatherization, and rate discounts



# PUBLIC BENEFIT FUND REVENUES AND EXPENDITURES



Over the last 5 years programming was less than revenue

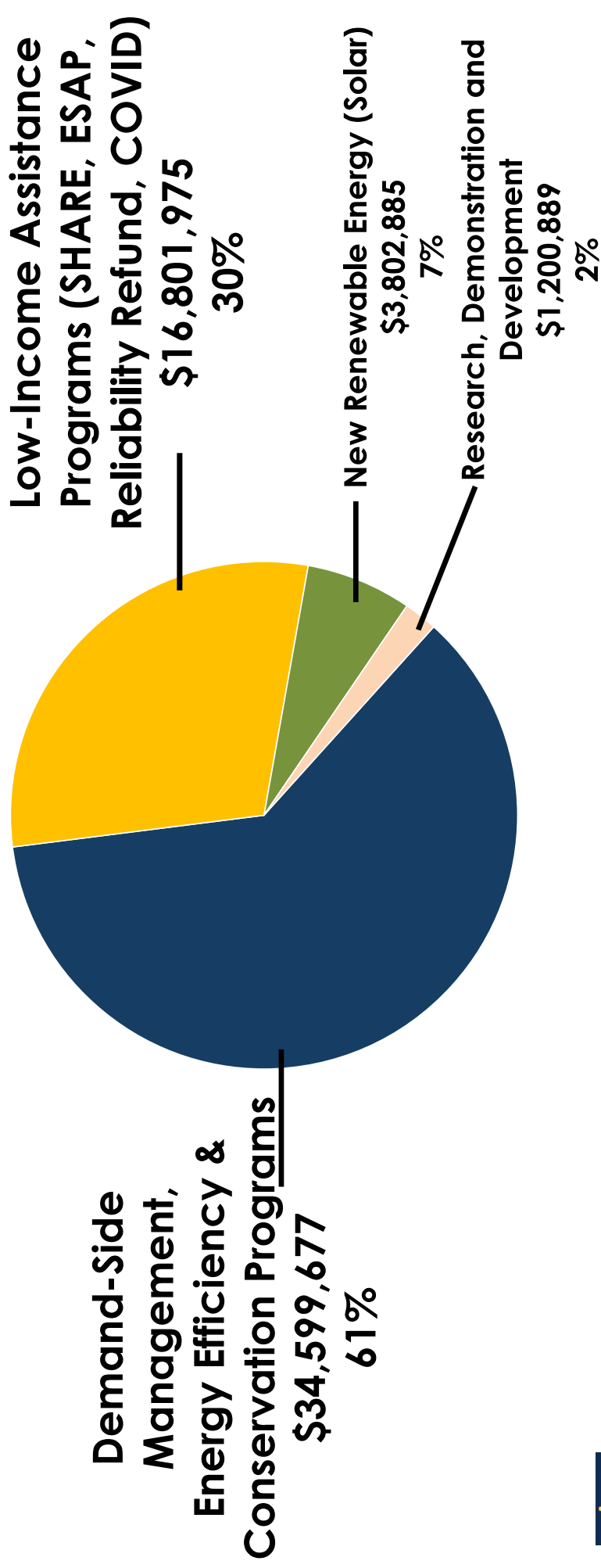
Public Benefit use-limited funds remain in reserve fund

**\$34 Million** is available in the reserve for programming

■ Total Expenditures  
 -●- Public Benefit Funds Collected & Other Revenue



# FUND EXPENDITURE BY PROGRAM TYPE (LAST 10 YEARS)



# PUBLIC BENEFITS – DEMAND SIDE MANAGEMENT

## What is Demand Side Management?

Energy efficiency and energy conservation

- A. Heat Pumps
- B. Lighting upgrades
- C. Energy efficient windows
- D. Energy Star appliances
- E. Free Shade Tree
- F. Insulation



# RESIDENTIAL ENERGY EFFICIENCY PROGRAMS

1. A/C incentives
2. HVAC Tune ups
3. Energy Star Appliances
4. Heat Pump Rebates
5. Pool Saver Rebates
6. Appliance Recycling
7. Tree Power
8. Mobile Home / Multi Family Rebates
9. Weatherization Programs



# COMMERCIAL ENERGY EFFICIENCY PROGRAMS

1. Business Outdoor Lighting
2. Key Account EE Program (KEEP)
3. Lighting Incentives
4. Performance Based Incentive Rebates
5. Refrigerator Load Program
6. Small Business Direct Install Program
7. Weatherization Rebates



# RENEWABLE ENERGY PROGRAMS

In 2008, SB-1 required RPU to:

1. Make available approximately \$25 million over a ten-year period to fund solar rebates for commercial and residential customers
2. Create a Solar Rebate program
  - a. The solar rebate program was funded entirely through Public Benefit Funds and RPU allocated \$2.5 million per year for the program
  - b. The solar rebate program, sunset on December 31, 2017, and RPU spent \$17.3 million on 1,845 commercial and residential solar rebates, equating to 11 megawatts of customer generated solar energy in Riverside.



# LOW-INCOME ASSISTANCE PROGRAMS

## 1. Sharing Households Assist Riverside's Energy – SHARE Program

- a. SHARE credits annually up to \$250 towards electric deposit or urgent notice assistance for qualified low-income applicants / monthly bill credits of \$20 towards the electric portion of their bill
- b. Monthly assistance increases in alignment with rate changes
- c. Income qualification is 250% or less of Federal Poverty Guidelines
- d. SHARE program assists approximately 5,000 customers each year
- e. Fiscal Year 2023/24 spent \$1,165,250 on SHARE program assistance

## 2. Energy Savings Assistance Program - ESAP

- a. ESAP is a direct installation program that offers efficiency upgrades including lighting, HVAC tune-ups, smart power strips, refrigerators and refrigerator recycling
- b. Established in 2013 RPU partnered with the Southern California Gas Company (SoCal Gas)
- c. Since 2015, the ESAP program served 3,884 low-income customers
- d. Fiscal Year 2023/24, program assisted 398 customers with energy efficiency upgrades
- e. Income qualification mirrors SHARE program - 250% or below of Federal Poverty Guidelines



# LOW-INCOME ASSISTANCE PROGRAMS

## 3. Energy Recovery Assistance Program - ERAP (COVID-assistance)

- a. ERAP Program, was established in March 2020 as a COVID-19 assistance package
- b. For residents who faced a temporary loss of household income due to the COVID-19 Emergency and Stay at Home orders
- c. The program was set up for limited time and provided a one-time bill credit of \$250 (increased to \$400 in October 2020)
- d. Residential customers qualified as low-income for this program if they had lost their job, were furloughed or faced a reduction of income due to the Stay-at-Home orders
- e. This program was discontinued in May 2023

## 4. Reliability Charge Assistance

- a. RPU offers financial assistance to low-income residents and seniors with disabilities with a Reliability Charge refund on their monthly bill
- b. Customers can apply annually for this refund to receive this assistance

# RESEARCH, DEMONSTRATION AND DEVELOPMENT

## RPU invests in RD&D grant funded programs with both businesses and local higher education institutions

1. Programs expended approximately \$1,200,889 on Energy Innovation and Custom Energy Technology Grant Programs
2. **Energy Innovations Grant** program provides research funds for local Universities to advance science and technology in energy-related fields
3. **Custom Energy Technology Grant** program provides RPU's business electric customers with the opportunity to request funds for the advancement of renewable energy and utility industry solutions
4. Previous awards made to UC Riverside grant funding for a study of photovoltaic solar, battery storage systems and electric vehicle chargers at the distribution system level and California Baptist University to study solar powered HVAC equipment
5. RPU has also collaborated on grant projects with local businesses on battery storage and thermal energy storage



# EDUCATION PROGRAMS

## What does RPU do for Education

1. Virtual science labs aligned with the Next Generation Science Standards
2. Kindergarten Community Helpers
3. 3rd Grade Water Pollution Solution
4. 4th Grade Electricity Circuits
5. 5th Grade Water Cycle
6. 9-12<sup>th</sup> Grade STEM Public Utilities Learning Lab



# EDUCATION PROGRAMS

RPU provides a comprehensive educational program that focuses on teaching younger people about electricity and the importance of being energy efficient for the future. The program includes:

- 1. 4th Grade Electricity Class:** A series of virtual lessons that are aligned with the 4th grade science standards. Students learn the science of electricity & how it is produced
- 2. TK/Kindergarten Community Helpers:** Aligned with Kindergarten Social Science Standards, offered in partnership with our field crews. RPU staff created a book, “The Sky is the Limit: The Story of a Lineman”, which is distributed to Transitional Kindergarten and Kindergarten classrooms, along with other age-appropriate materials on how to conserve electricity



# SUNSET PROGRAMS

1. Off-Peak Cooling System Incentive Program
2. Utiligraph Home Energy Analysis Program
3. We Care Program
4. Electric Transportation Demonstration Program
5. Low-Income Home Rehabilitation Incentive
6. Rental Housing Rehabilitation Incentive
7. Electric Lawn Mower Incentive
8. LED Buydown Program
9. Whole House Program
10. Upstream HVAC program
11. Enhanced Insulation Program
12. Solar PV



# BOTTOM-LINE ABOUT PUBLIC BENEFIT FUNDS

1. Established 30 years ago to ensure that Public Utilities offer customers programs to support energy efficiency and conservation
  - a. Must collect the funding
  - b. Must offer programming
2. Low-income support is included in these programs for both energy efficiency and rate/bill rebates – and must be aligned with community need
3. Public utilities must report on their use of the funds each year
4. Public utilities must establish targets for energy efficiency and conservation and low-income support

# PUBLIC BENEFITS LIMITATIONS

## What are the limitations placed on the Public Benefits Fund?

1. Water conservation
2. Recycling
3. Equipment that does not have a demonstrable energy savings
4. Electric infrastructure upgrades
5. Any action that does not support the four identified uses

# ENERGY PROGRAM DEVELOPMENT

1. RPU staff creates new programs in consideration of:
  - a. Customer's market needs
  - b. New technology advances
  - c. Achieving kWh savings potential
2. Ideas from Board of Public Utilities, City Council, Community, or Working Groups like this
3. Review of what other utilities – public and investor owned – are doing and monitoring new and emerging programming in the field of energy efficiencies

# CLOSING THOUGHTS AND NEXT STEPS

Examples only

Program Concepts RPU  
Should Explore

- Battery storage
- A/C efficiency
- Direct installs more broadly offered

Big Project /  
Demonstration

- Demonstration house / education center

Are there areas for  
better communication  
/ outreach /  
education? Who  
should we talk to?

Focus of the  
community survey

Anything that you think  
is missing or could be  
done better

Next Working Group  
Meeting – September  
and October

