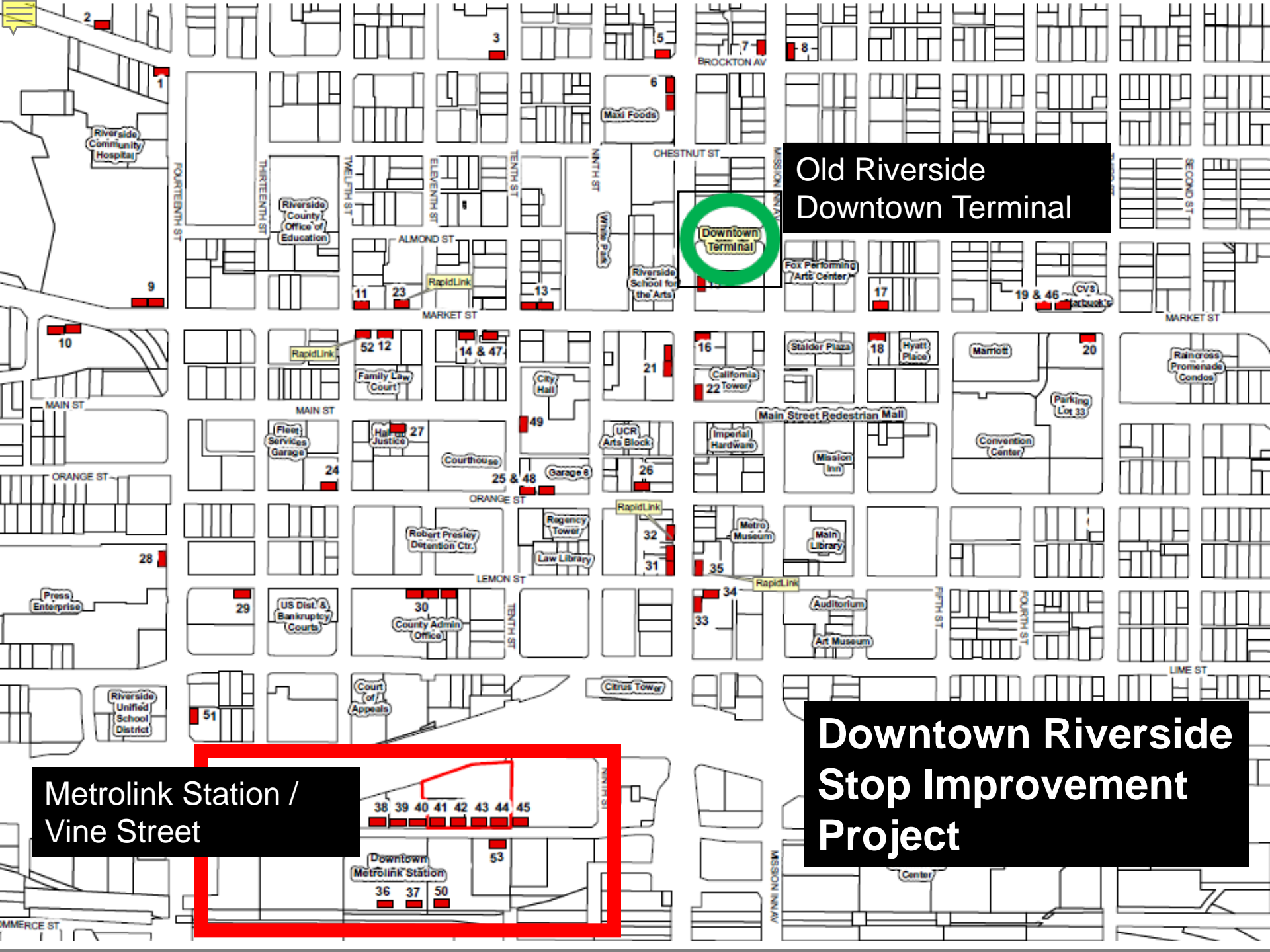


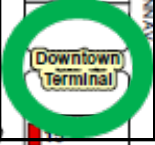


# Downtown Riverside Stop Improvement Project

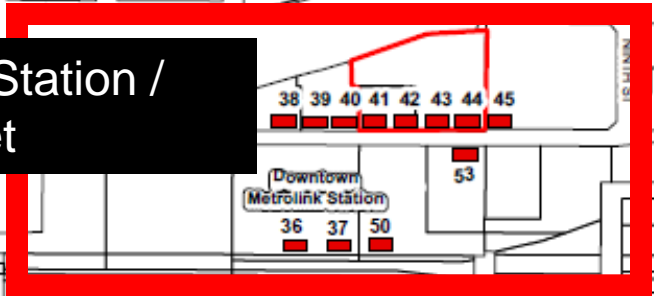
Transportation Board  
August 2, 2017



Old Riverside  
Downtown Terminal



Metrolink Station /  
Vine Street



Downtown Riverside  
Stop Improvement  
Project

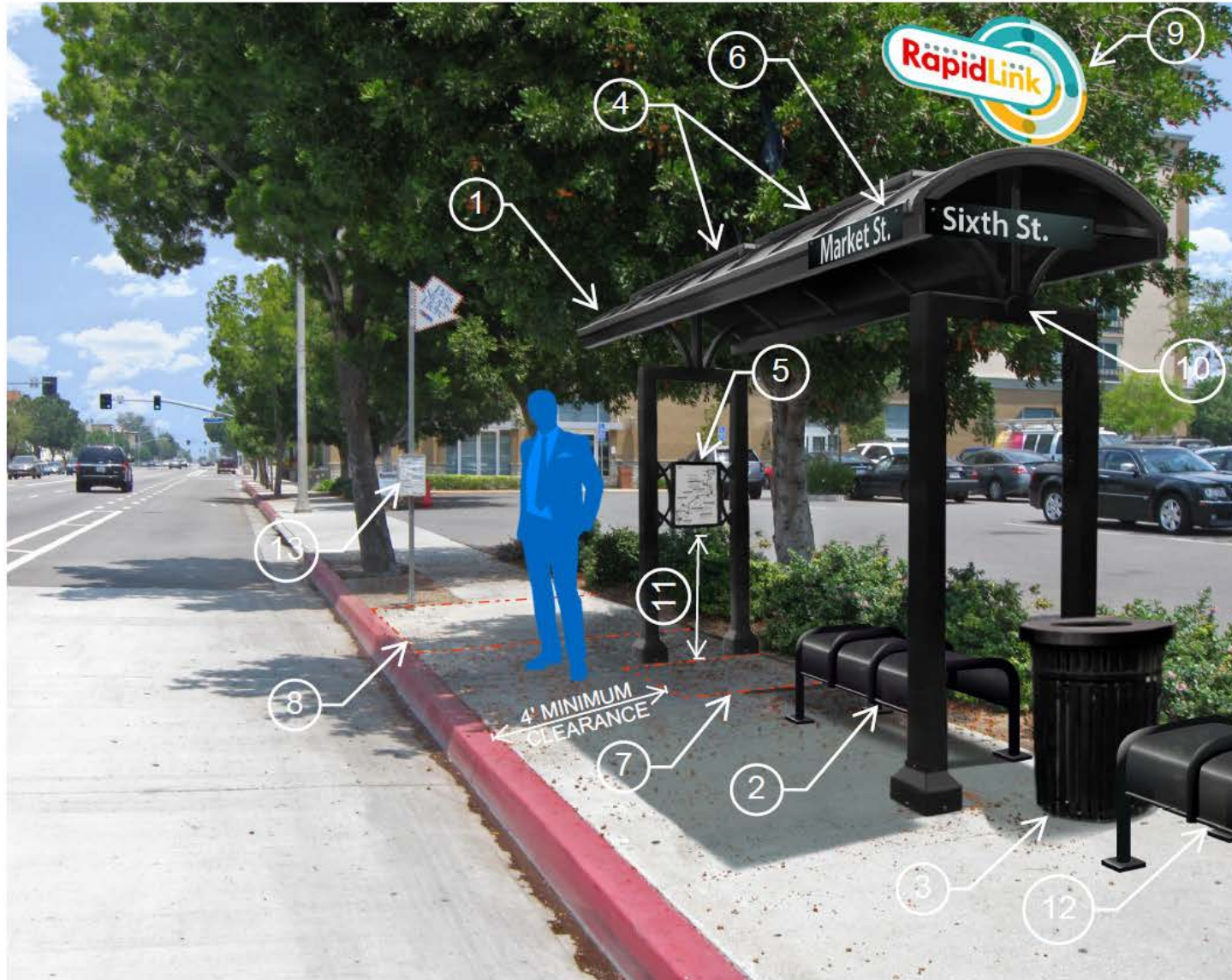


# Partnerships

- RTA and City of Riverside
- Businesses
- Business and neighborhood organizations
- Special interest groups/transit advocates
- Passengers



# Conceptual Plan



- 1 Standing seam metal roof
- 2 Perforated metal bench
- 3 Steel strap trash receptacle
- 4 Dual solar panels
- 5 Bolt on route map
- 6 Roof gutter
- 7 4' x 4' area for mobility devices (per 2010 ADA Standards for Accessible Design, Chapter 305.3)
- 8 5' x 8' loading and unloading zone (per 2010 ADA Standards for Accessible Design, Chapter 810.2)
- 9 RapidLink sign
- 10 Place for city emblem (provided by city)
- 11 40" to bottom of sign text (per ADA Standards for Transportation Facilities, Table 703.5.5, Visual Character Height)
- 12 Optional bench
- 13 Route info (sign provided by others)



# Actual Shelter



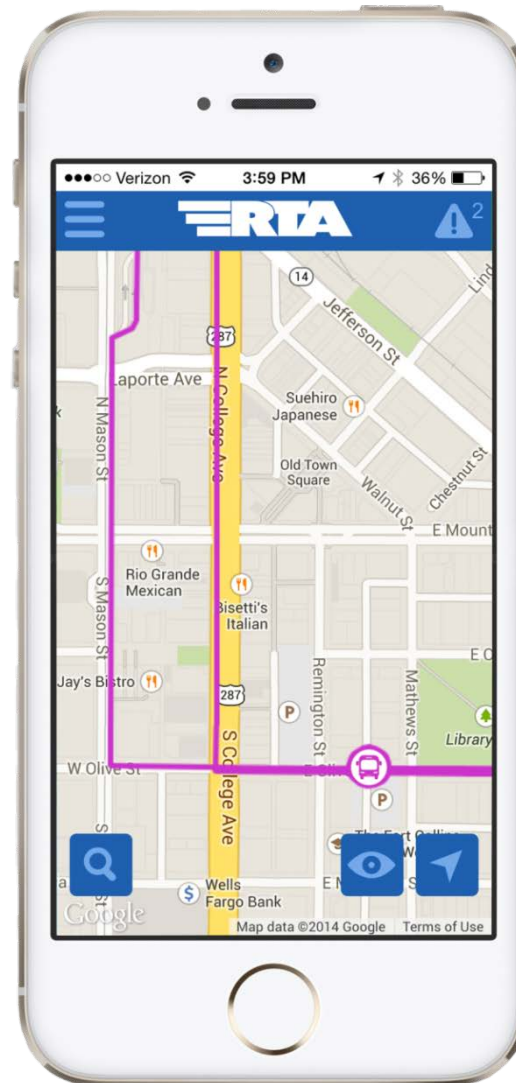
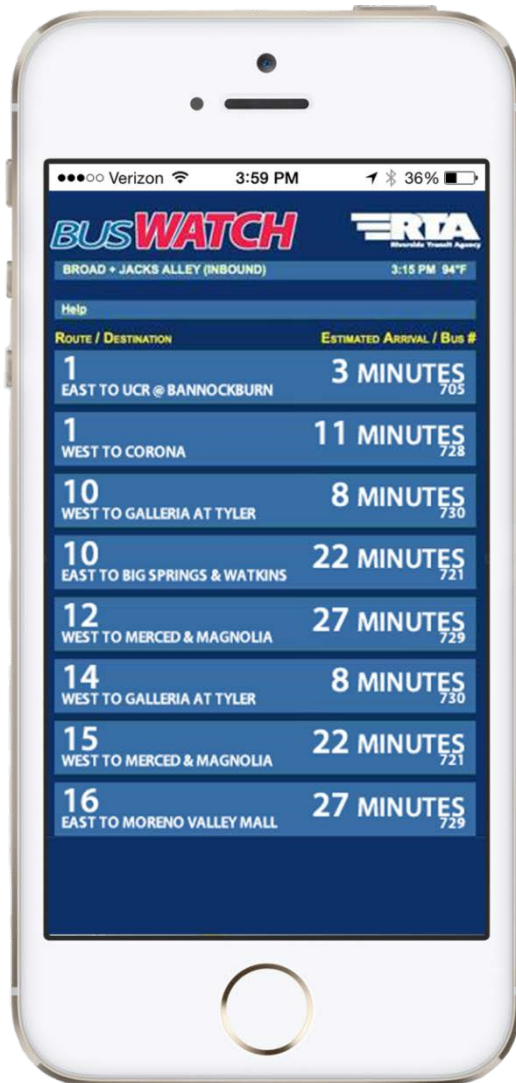


# Ambassador Outreach Program Post-Change

	Week 1	Week 2	Week 3
Hours	4 a.m. – 6 p.m.	6 a.m. – 6 p.m.	7 a.m. – 5:30 p.m.
Ambassadors Available	90	58	26
Ambassadors Deployed at all Times	19	7	5
Ambassador Hours	1,243	431	226



# [www.RTABus.com](http://www.RTABus.com)







[www.RTABus.com](http://www.RTABus.com)

# New Bus Stop Signs

BUS INFO (951) 565-5002

**10** WESTBOUND  
GALLERIA AT TYLER

BUS STOP **1093** • **BUSWATCH**  
REAL-TIME BUS ARRIVAL INFORMATION

BUS INFO (951) 565-5002

**10** EASTBOUND  
BIG SPRINGS & WATKINS

**13** WESTBOUND  
GALLERIA AT TYLER

BUS STOP **1045** • **BUSWATCH**  
REAL-TIME BUS ARRIVAL INFORMATION

BUS INFO (951) 565-5002

**1** EASTBOUND  
UC RIVERSIDE

**GOLD LINE** RAPIDLINK  
EASTBOUND  
UC RIVERSIDE

**14** EASTBOUND  
LOMA LINDA

**15** EASTBOUND  
DOWNTOWN RIVERSIDE

**22** SOUTHBOUND  
LAKE ELSINORE OUTLET

**54** CLOCKWISE  
DOWNTOWN RIVERSIDE  
METROLINK SHUTTLE

**204** COMMUTERLINK  
SOUTHBOUND  
RIVERSIDE/UCR

BUS STOP **1001** • **BUSWATCH**  
REAL-TIME BUS ARRIVAL INFORMATION





**TEXT** mande texto  
**RTABUS 4444 to 41411**



**DOWNLOAD** descargue  
**BusWatch App** iOS & Android



**ONLINE** en línea  
**RTABUS.COM**



**CALL** llame  
**(951) 565-5002**

**BUS STOP 4444**



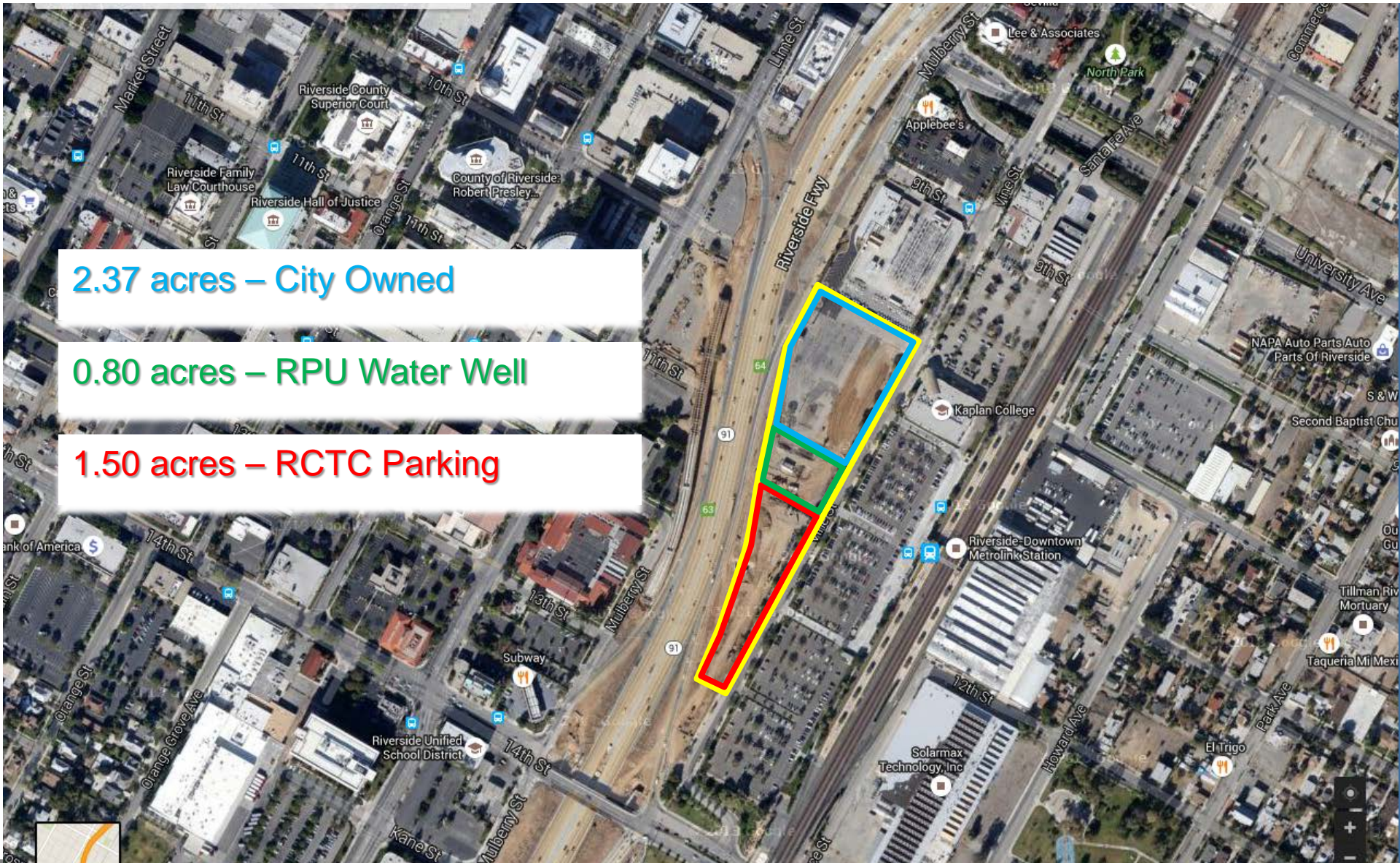


# Vine Street Mobility Hub

2.37 acres – City Owned

0.80 acres – RPU Water Well

1.50 acres – RCTC Parking

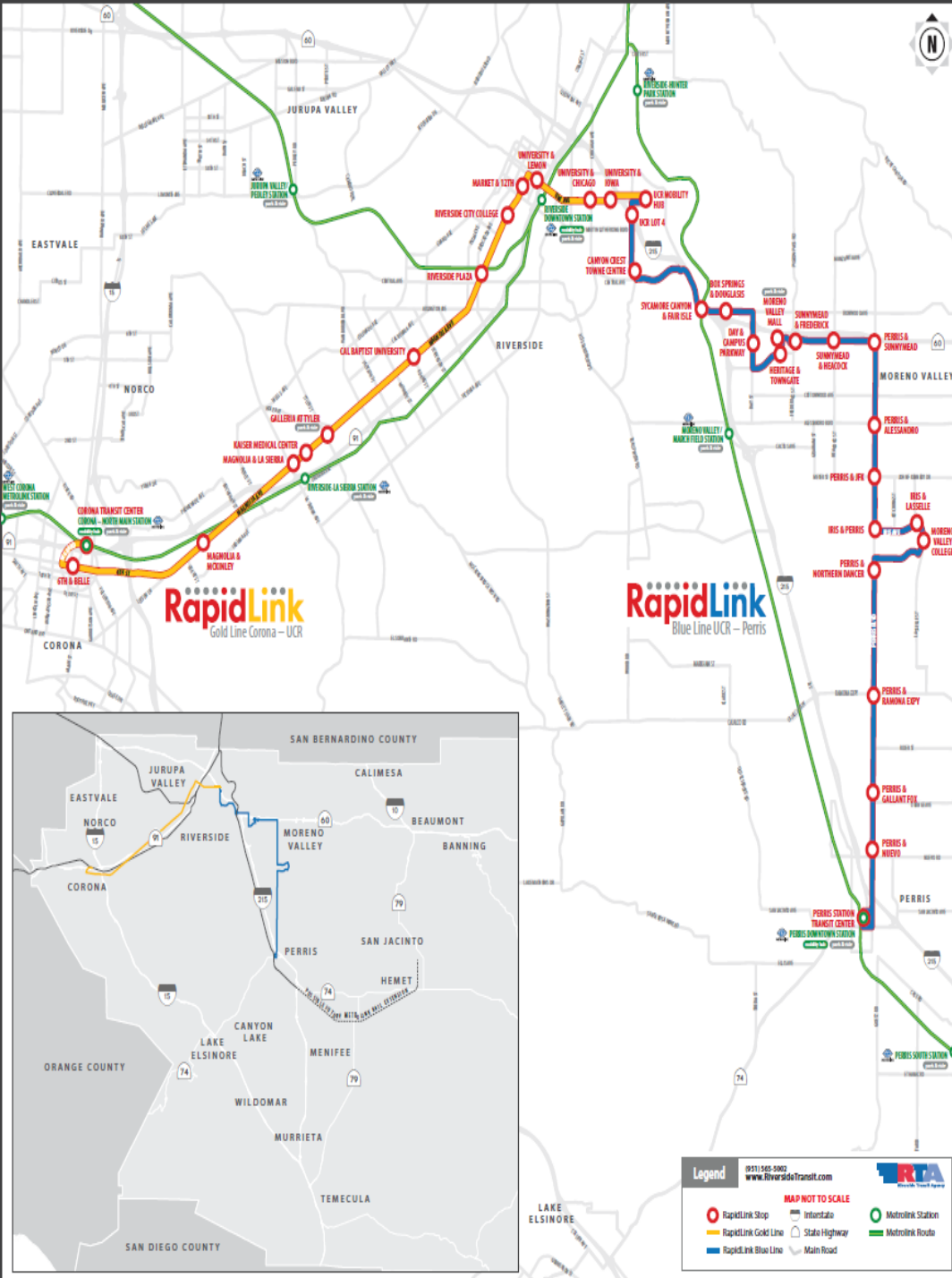




# RäpidLink

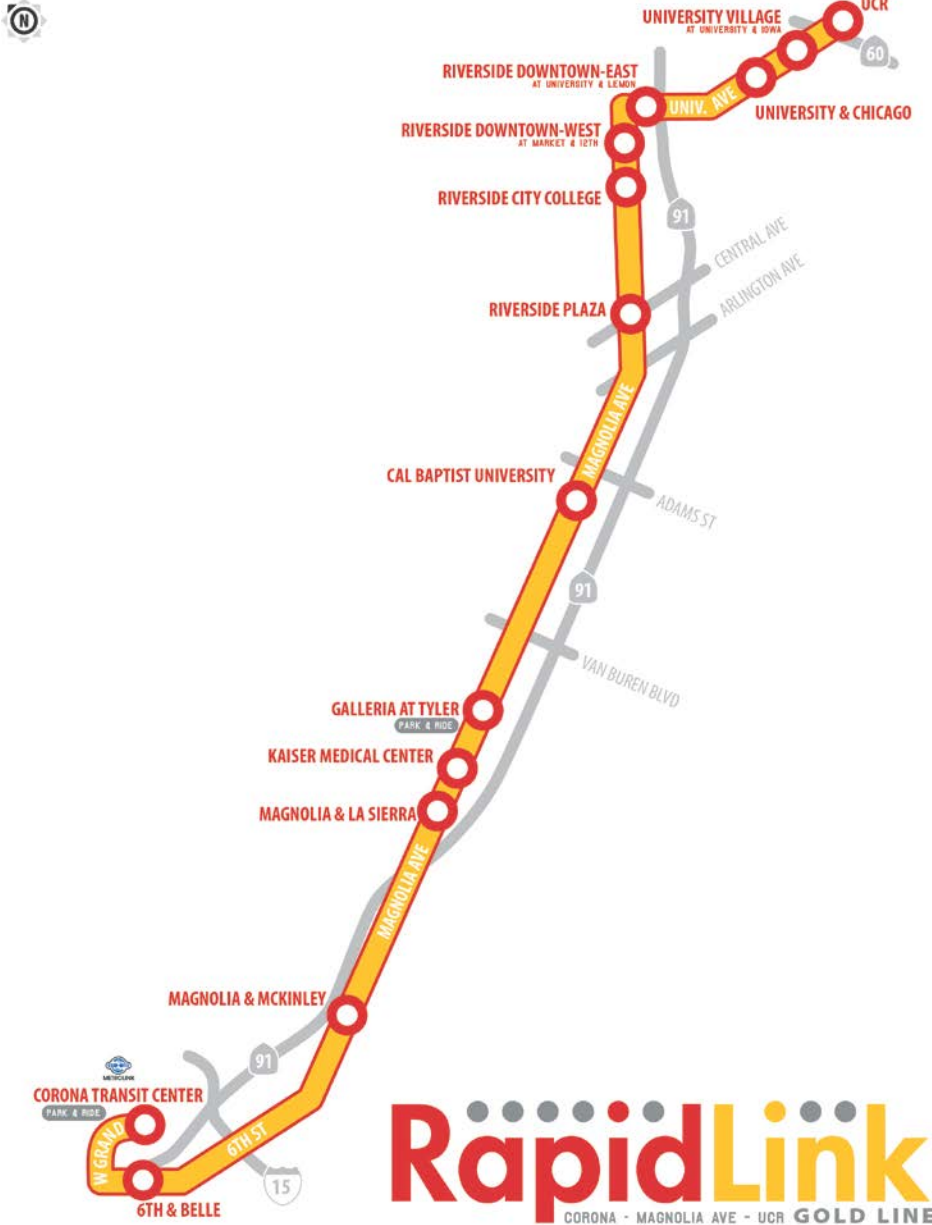
**SERVICE STARTS:  
MONDAY, AUGUST 28, 2017**

**GRAND OPENING  
FRIDAY, AUGUST 25, 2017**



- RapidLink Gold Line is the first RTA limited stop service on an arterial road (not a freeway).
- Focuses on providing a “rapid link” between the busiest stops and locations on the Route 1 corridor.
- Designed to supplement, not replace Route 1. Can be easily expanded to all day service weekdays.
- Goal is to grow ridership on this largest RTA corridor, and if successful roll it out to other corridors in the future.
- Features new fleet, upgraded bus stops, special branding, and a free-flowing operating format.





**Service starts:**

**Monday, August 28<sup>th</sup> 2017**

- RapidLink Gold Line links Corona Transit Center to UCR with 12 intermediate stops.
- Stops selected based on highest ridership and busiest locations on the Route 1 corridor.
- Peak period weekdays only to start but hoping to expand quickly to full daytime service weekdays
- Dedicated red bus fleet to distinguish from local Route 1
- Same local bus fare as Route 1 so passengers can freely move between Rapid Link and local routes (plus free week one).
- Route 1 service levels and run times unchanged.
- Grand opening, Friday, August 25th

# UCR Mobility Hub Project



**Current UCR Bus Stops**



# Two-way bike lanes on Canyon Crest Drive



# Conceptual Plan



Canyon Crest  
Dr

Bus Stops

University Ave

ARTS

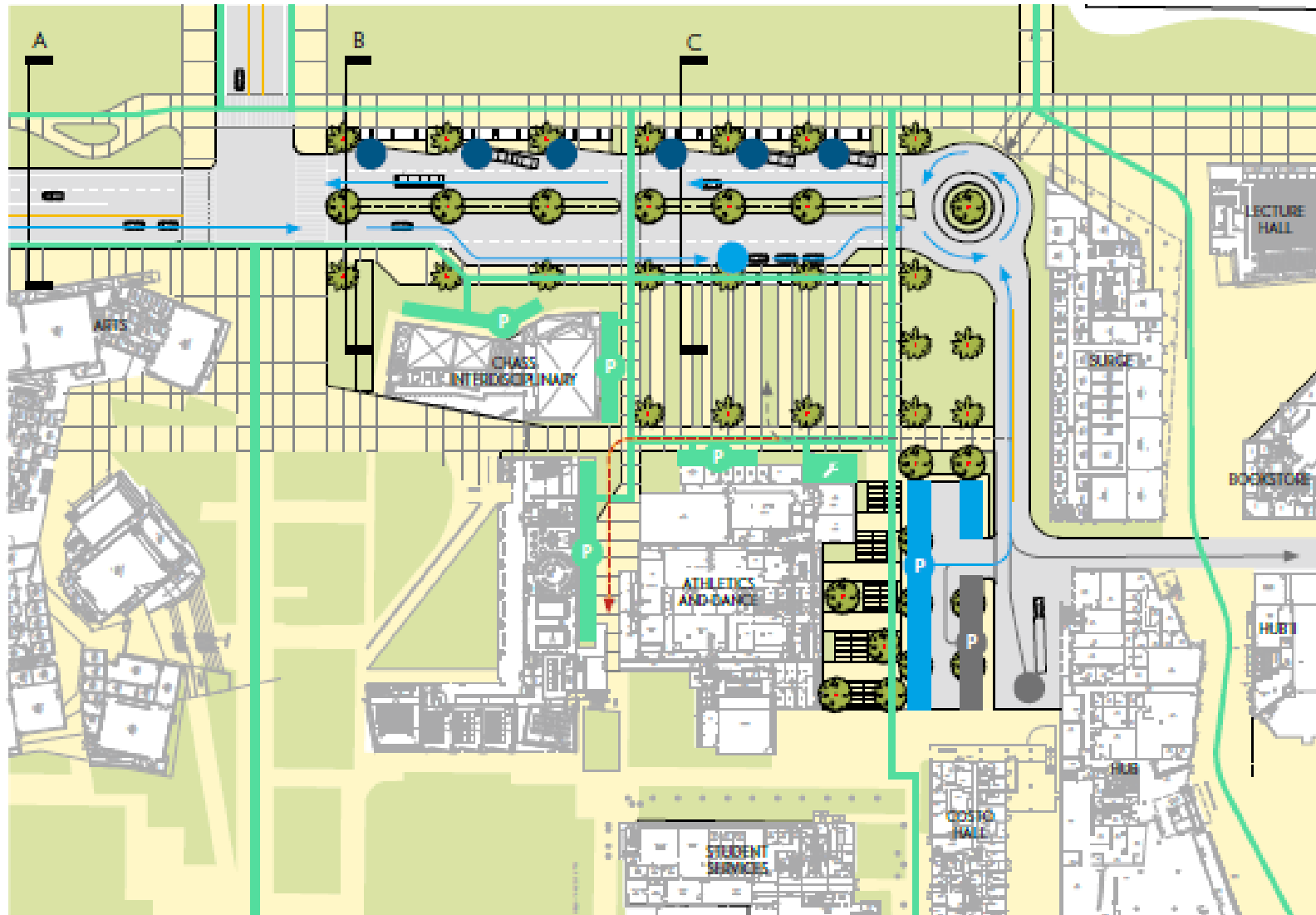
CHASSINT.

ATHLETICS  
AND DANCE

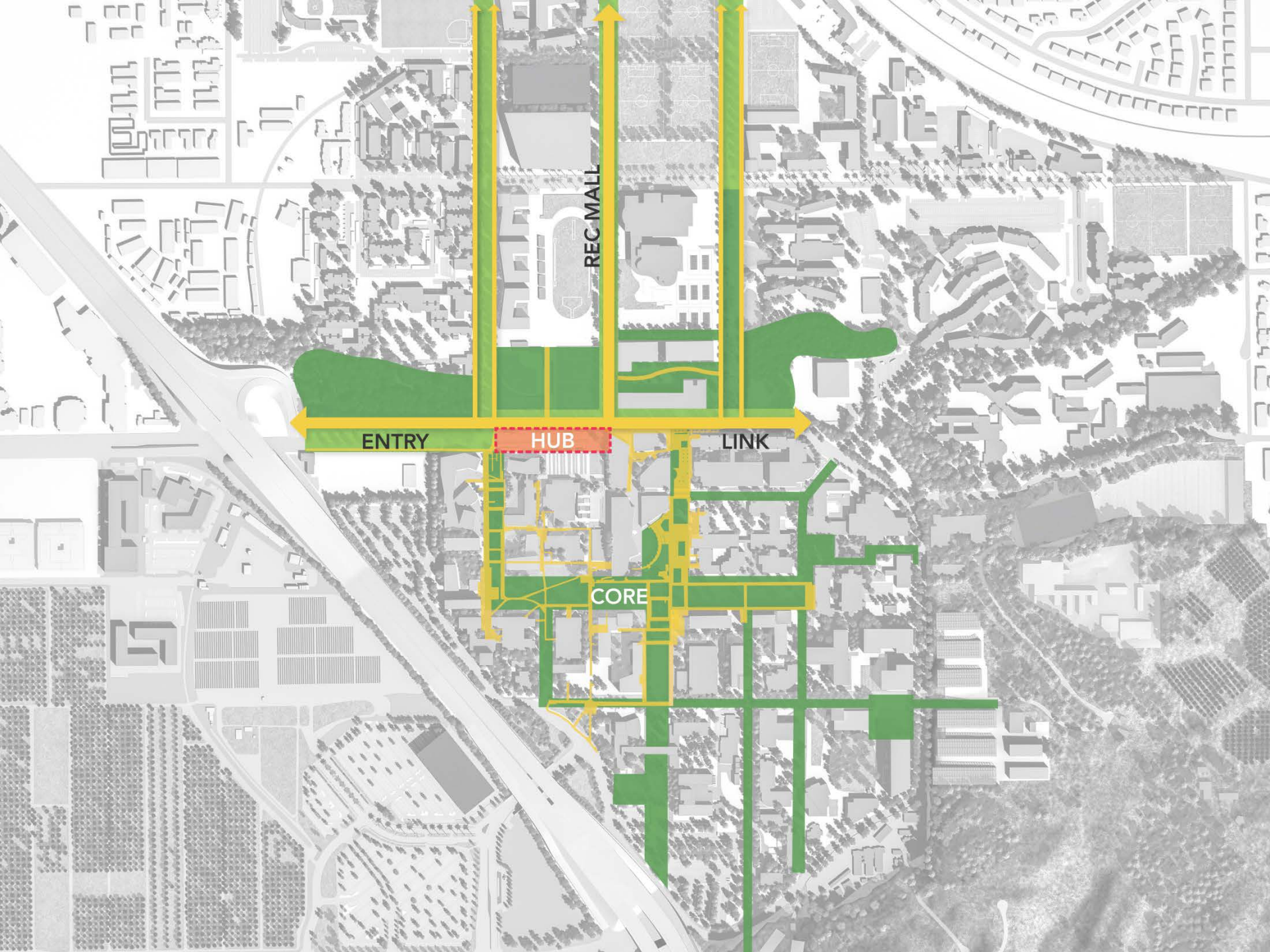
SURGE

HUB

# Conceptual Plan







REC MALL

ENTRY

HUB

LINK

CORE



# **UCR Mobility Hub Project**

1. Truly multimodal, regionally significant facility – transit, bicycles, pedestrian, car sharing and other nonmotorized modes
2. Supports UCR's expansion plans
3. Project will increase ridership and mode share



