

## RIVER-SIDE GATEWAY PARK PROJECT SUITE

Parks, Recreation and Community  
Services Department

City Council  
May 21, 2019

RiversideCA.gov

### BACKGROUND

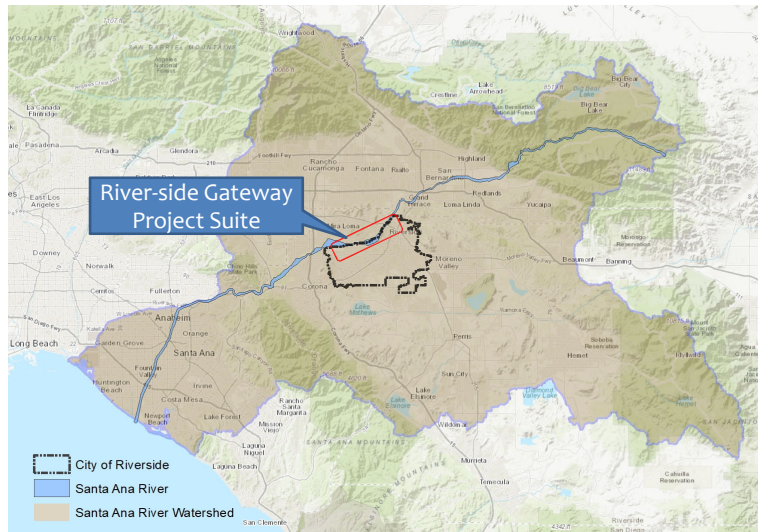
1. In 2014, the Santa Ana River Conservancy was formed under the State Coastal Conservancy. Grant funding is available.
2. Santa Ana River Task Force (2003 and 2009) recommends improvements to parks and open spaces along the Santa Ana River.



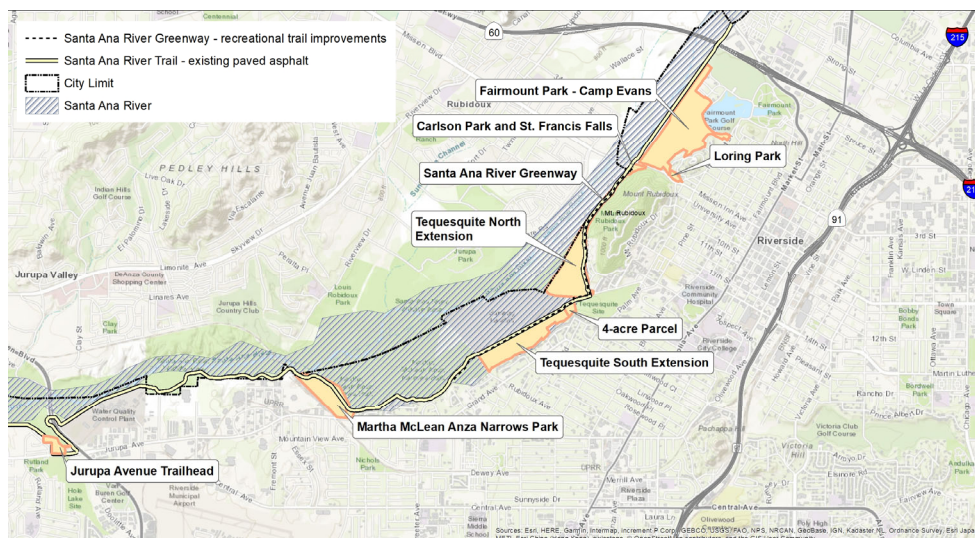
2

RiversideCA.gov

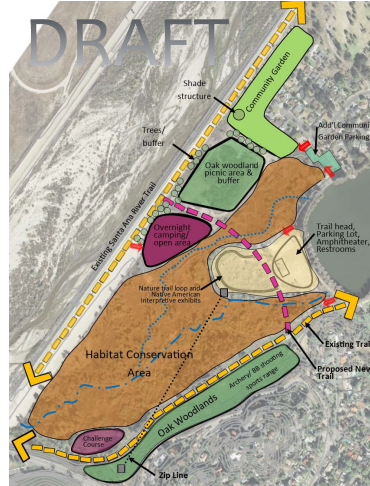
# RIVER-SIDE GATEWAY PROJECT SUITE



# RIVER-SIDE GATEWAY PROJECT SUITE



# FAIRMOUNT PARK - CAMP EVANS MASTER PLAN



1. Habitat conservation area
2. Oak woodlands
3. Trailhead parking lot
4. Small amphitheater
5. Restrooms
6. Nature/cultural interpretive trail
7. Challenge course
8. Zip line
9. Camping area
10. Picnic area
11. Community garden
12. Archery/BB shooting sports range
13. Improved Fire Dept access



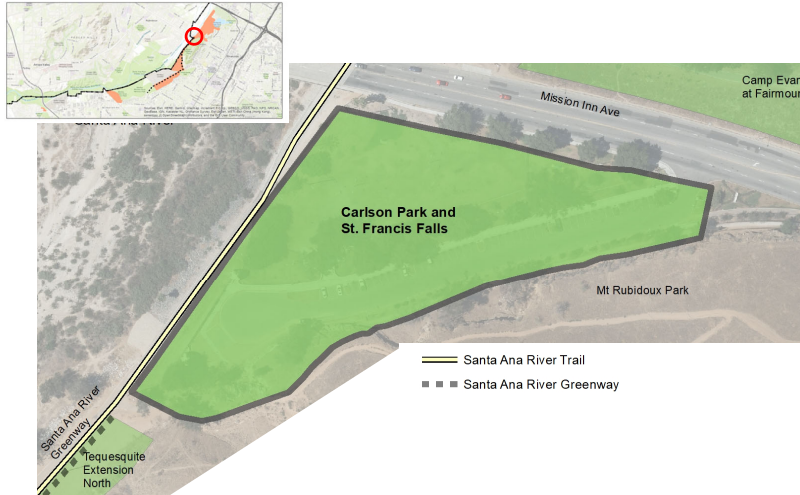
# LORING PARK - MASTER PLAN



1. Walking trails
2. Stairs – connect to Camp Evans and SART
3. Vista point
4. Landscape and irrigation
5. Parkour/exercise stations
6. Public art



## CARLSON PARK - ST FRANCIS FALLS RESTORATION



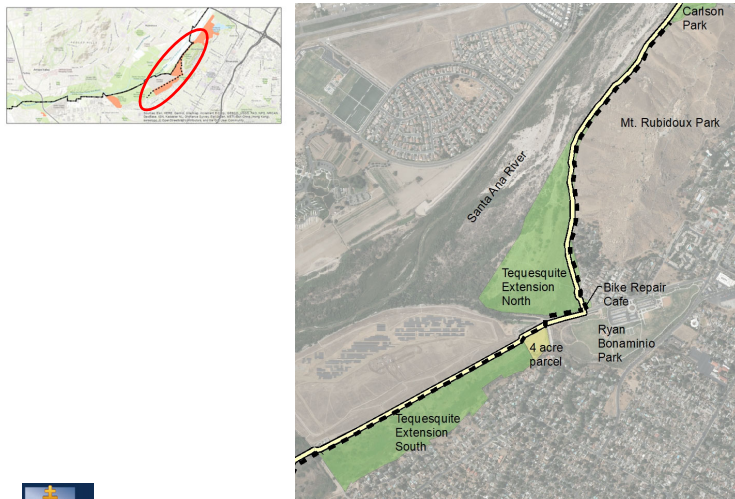
1. Have a public art competition to receive proposals to renovate historic water feature to use lights or other artistic methods to simulate running water rather than re-establishing water in the falls.
2. Re-install the historic neon sign on the hillside above Carlson Park and Mission Inn Ave.



7

RiversideCA.gov

## SANTA ANA RIVER GREENWAY – RECREATIONAL TRAIL IMPROVEMENTS



1. Add decomposed granite trail parallel to existing paved asphalt trail to separate slower pedestrian traffic
2. Trees, landscaping, irrigation
3. Lighting
4. Signage
5. Emergency phones
6. Drinking fountains
7. Seating/rest areas

Santa Ana River Greenway Recreational Trail Improvements  
 Santa Ana River Trail



8

RiversideCA.gov

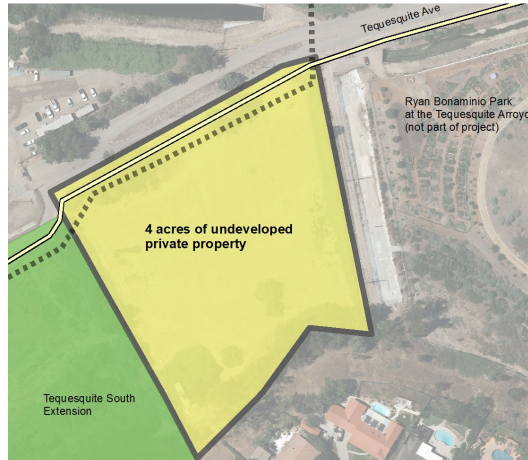
# TEQUESQUITE NORTH EXTENSION - MASTER PLAN AND TRAILHEAD IMPROVEMENTS



1. Habitat
2. Native plant interpretive garden
3. SART trailhead with signage, rest area, drinking fountain
4. Bike repair café
5. Educational/interpretive trails
6. Lighting
7. Vehicle access control to block unauthorized access to river bottom



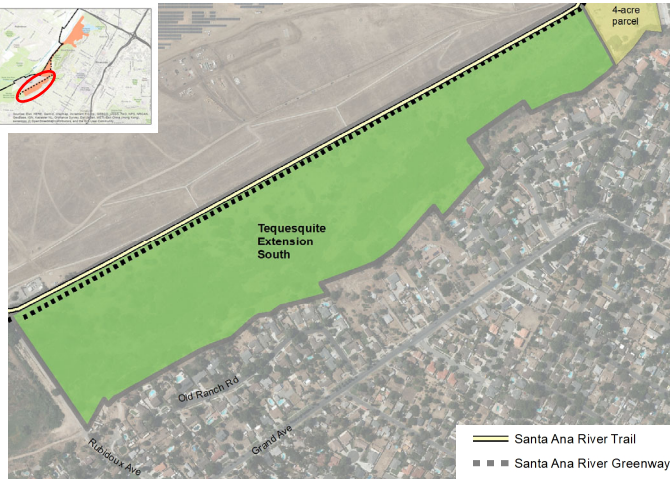
# PRIVATE PROPERTY PURCHASE – 4 ACRES



1. Acquisition
2. Dog park
3. Skate park
4. Community garden expansion, agriculture



## TEQUESQUITE SOUTH EXTENSION - MASTER PLAN



1. Habitat
2. Agriculture, small farm incubator
3. Educational/interpretive trails
4. Oak woodlands
5. Nature playground
6. Dog park – depending on community input
7. Horse stables with rentals and classes
8. Skate park



11

RiversideCA.gov

## MARTHA MCLEAN ANZA NARROWS PARK - RIVERSIDE GATEWAY MASTER PLAN



1. River Gateway improvements
2. Circulation & vehicular control throughout park
3. Remove and relocate existing restroom
4. Santa Ana River Trail monument sign on Jurupa Ave
5. Landscape and irrigation refurbishment throughout park, California native plants
6. Recreational decomposed granite trail along park edge adjacent to existing paved Santa Ana River Trail

— Santa Ana River Trail  
 ■ ■ ■ Santa Ana River Greenway



12

RiversideCA.gov

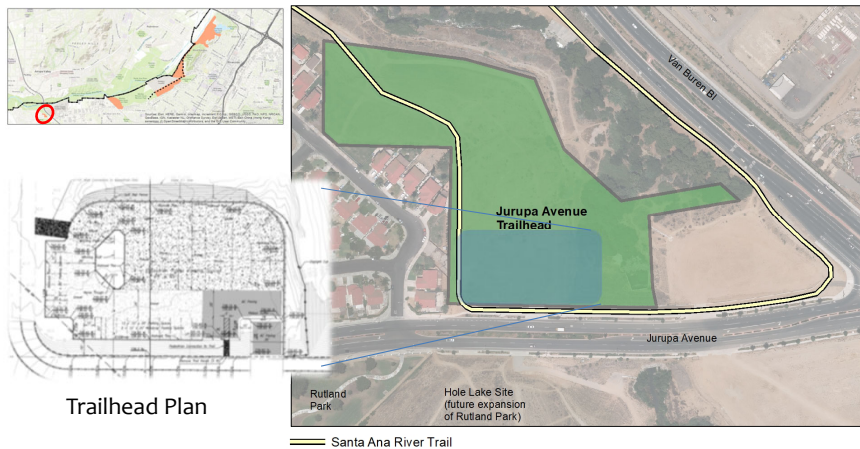
# MARTHA MCLEAN ANZA NARROWS PARK - RIVER GATEWAY AREA PRELIMINARY CONCEPT



13

RiversideCA.gov

# JURUPA AVENUE TRAILHEAD



Trailhead Plan

1. Drinking water
2. Shady resting areas
3. Parking for cars and trailers
4. Equestrian facilities (water, hitching, etc.)
5. Bike lockers/racks (to encourage active transportation)
6. Bicycle repair station



14

RiversideCA.gov

## FUTURE GRANT FUNDING OPPORTUNITIES

1. California Coastal Conservancy – Santa Ana River Conservancy;
2. Proposition 1 Integrated Regional Water Management grant through Santa Ana Watershed Project Authority – Camp Evans submitted in January 2019 and projects currently being evaluated; and
3. Proposition 68 (2018 Parks, Environment, and Water Bond)- California State Parks, California Natural Resources Agency, Coastal Conservancy.



15

RiversideCA.gov

## PROJECT DEVELOPMENT PHASE COSTS

Property acquisition, planning, conceptual design, and environmental compliance

Project Sites	Cost incl. 10% contingency & 5% for administration & permits
Fairmount Park – Camp Evans Master Plan	\$460,000
Loring Park – Master Plan	\$288,000
Carlson Park – St. Francis Falls Restoration	\$84,500
Santa Ana River Greenway – Recreational Trail Improvements	\$288,000
Tequesquite North Extension – Master Plan and Trailhead Improvements	\$345,000
Private Property Purchase – 4 acres of private property	\$230,000
Tequesquite South Extension – Master Plan	\$460,000
Martha McLean Anza Narrows Park – Riverside Gateway Master Plan	\$375,000
Jurupa Avenue Trailhead (near Van Buren)	\$230,000
<b>TOTAL</b>	<b>\$2,760,500</b>



16

RiversideCA.gov



## PROJECT FUNDING

Source	Amount
Grant Request	\$2,358,500
City Match – Regional Park Fee	\$390,000
City Match – In Kind Labor	\$12,000
<b>Total</b>	<b>\$2,760,500</b>



17

RiversideCA.gov

## RECOMMENDATIONS

That the City Council:

1. Adopt the attached Resolution approving the filing of a grant application for funding from the California State Coastal Conservancy for the River-side Gateway Project Suite, including parkland acquisition, planning, conceptual design and environmental compliance for multiple park projects along the Santa Ana River;
2. Upon grant award, authorize an increase in estimated revenues in the amount of \$2,358,500 and appropriate expenditures in the same amount in project account 9339900102-44022000 to hold grant funds;



18

RiversideCA.gov

## RECOMMENDATIONS

3. Approve the use of matching grant funds in the amount of \$90,000 from the Recreational Trail Fee account 413-340349 and \$300,000 from the Regional Park Development Account 413-340345 and transfer funding in the same amount to the Santa Ana River Coastal Conservancy account 9339910245-44030500; and
4. Authorize the City Manager, or his designee, to execute all necessary documents to implement the approval of the grant application and to carry out the grant project on behalf of the City, including making minor and non-substantive changes.

