

Museum Department

Jennifer Dickerson
Curatorial Services Manager

Museum of Riverside Board Meeting
Wednesday, February 26, 2025

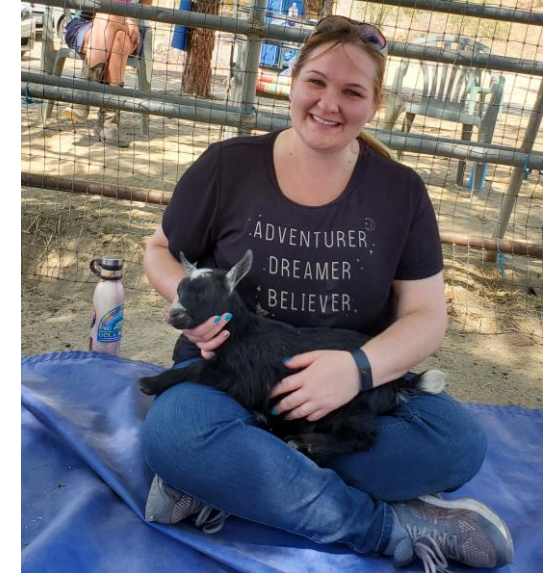
ABOUT ME

- ❖ Born in Los Angeles
- ❖ Moved to Riverside when I was 12
 - ❖ Tomas Rivera Elementary School
 - ❖ Amelia Earhart Middle School
 - ❖ Martin Luther King High School
- ❖ BA from UCLA in Classical Civilizations
- ❖ Post-bacc studies at UCR in American History
- ❖ MA from CSU-Fullerton with a focus on Colonial American History



FUN FACTS ABOUT ME

- ❖ LOVE animals (especially dogs)
- ❖ Love hiking, favorite hikes so far are Big Sur and Joshua Tree
- ❖ Country line dancer
- ❖ Fan of trivia nights
- ❖ Grateful to be a part of a diverse family



FUN FACTS ABOUT ME

- ❖ Museum enthusiast!
Favorites so far are Getty Villa and the Oakland Museum
- ❖ History nerd (I love watching documentaries and reading about different things, especially local history)
- ❖ Favorite place ever is the Griffith Observatory (can't beat that view of LA!)



EXPERIENCE



- ❖ Have worked in the museum field for 15 years
- ❖ Started with MoR in February 2024
- ❖ Previously worked at the San Bernardino County Museum in Redlands (~9 years) as the Curator of History
- ❖ Formerly worked at the Mission Inn Museum (~ 5 years) as Curator of History

EXPERIENCE (Exhibitions)



EXPERIENCE (Collections)



EXPERIENCE (Programs and Partnerships)

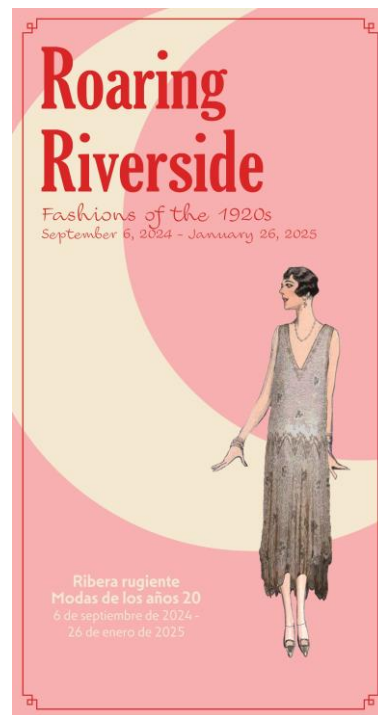


CURATORIAL SERVICES MANAGER OVERVIEW

Programs



Exhibitions



Collections



CURATORIAL SERVICES MANAGER OVERVIEW

- ❖ Oversee the development and refinement of policies and procedures relating to museum exhibitions, public programming, and collections
- ❖ Assist in planning, organizing, and supervising the Museum's various exhibition- and program-related endeavors
- ❖ Supervise and work with curatorial, education, and collections staff

CURATORIAL SERVICES MANAGER OVERVIEW

- ❖ Coordinate efforts within the Museum department (communication link), including relating to program promotion
- ❖ Collaborate with other City departments and partner organizations to optimally serve our community via engagement, programs, exhibitions, and presentations

CURATORIAL SERVICES MANAGER OVERVIEW

- ❖ Work with staff to create a multi-year schedule of temporary exhibitions and develop diverse accompanying programming
- ❖ Develop and implement useful tools such as a collection development plan, a style guide for exhibitions, and an exhibition development manual

CURATORIAL SERVICES MANAGER OVERVIEW

- ❖ Currently helping the Museum ...
 - ❖ prepare for renovation projects,
 - ❖ develop reopening exhibitions,
 - ❖ prepare for AAM reaccreditation,
 - ❖ plan and execute public programs, and
 - ❖ streamline procedures for planning, installing, and deinstalling exhibitions (like *Dear Riverside* and the exhibitions at Heritage House)

CURATORIAL SERVICES MANAGER OVERVIEW

I basically help the Museum and its dedicated staff do ALL it does!



GOALS

- ❖ Help lead the development of the Museum's reopening exhibitions
- ❖ Create and refine processes to support such a dedicated staff in serving our community through programs, exhibitions, and general outreach
- ❖ Expand the Museum's partnerships and relationships with local organizations



REACH ME HERE!

Jennifer Dickerson
Curatorial Services Manager
951-826-5903
jdickerson@riversideca.gov



RECOMMENDATION

That the Museum of Riverside Board receive and file this presentation.