

MAIN MUSEUM STATUS

Community & Economic Development Department

Cultural Heritage Board

Agenda Item: 8

April 19, 2023

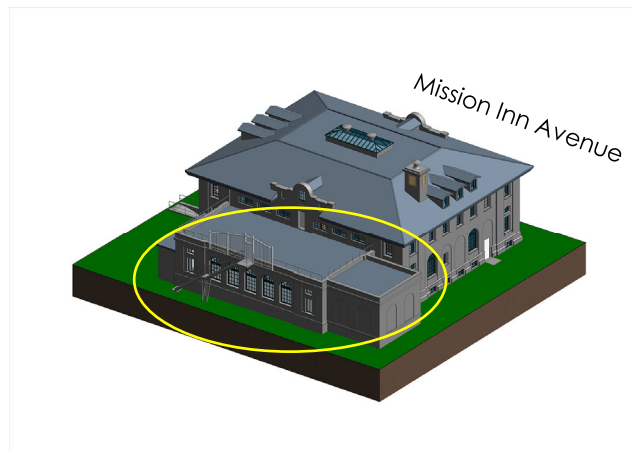
RiversideCA.gov

1

BACKGROUND/HISTORY

Old additions at
back of 1912
structure to be
removed (yellow oval).

Obscured historic
features to be
revealed.



2

RiversideCA.gov

2

BACKGROUND/HISTORY

- Built in 1912.
- Addition at rear in 1928 destroyed most of original rear elevation.



3

RiversideCA.gov

3

BACKGROUND/HISTORY

- Second floor in-fill in 1954
- Small gallery added in 1967
- Lobby is least altered since 1912; features of significance will remain



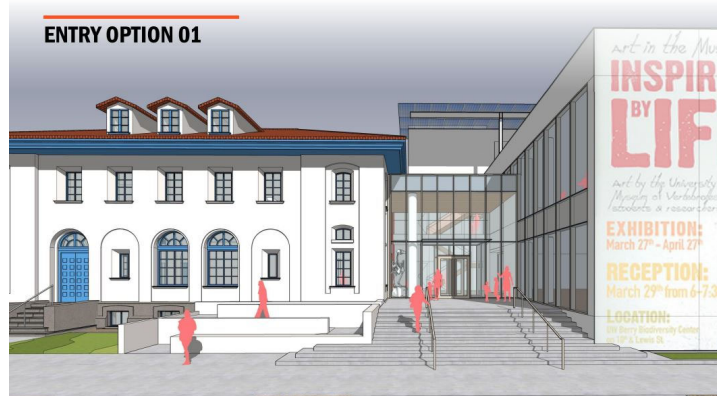
4

RiversideCA.gov

4

CONCEPTUAL PLANS

- New approach on Orange Street
- Opportunities for bold communication



5

RiversideCA.gov

5

CONCEPTUAL PLANS

- Grand staircase joining old and new structures
- Largest galleries to be in new building



6

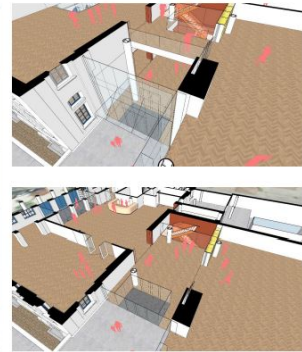
RiversideCA.gov

6

CONCEPTUAL PLANS

- Two entries to one admissions desk
- Sense of arrival

ENTRY VESTIBULE



20



7

RiversideCA.gov

7

CONCEPTUAL PLANS

- Staircase alongside ascending exhibit wall
- Clear and appealing signage

STAIR AT ENTRY



8

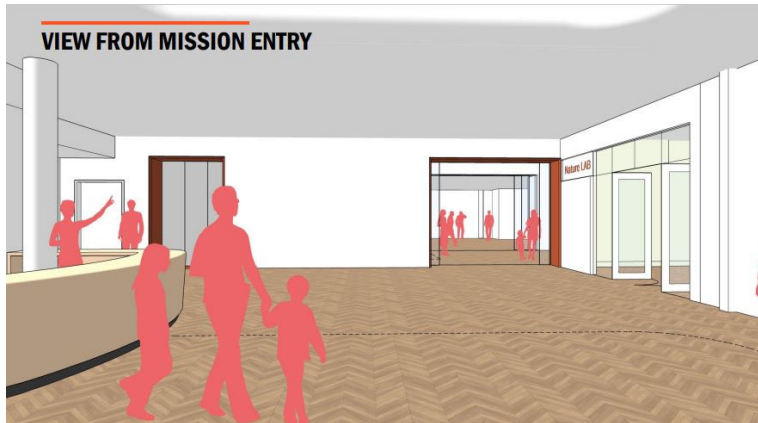


RiversideCA.gov

8

CONCEPTUAL PLANS

- Lobby for orientation, gathering, events and programs
- Everything else radiates out from lobby



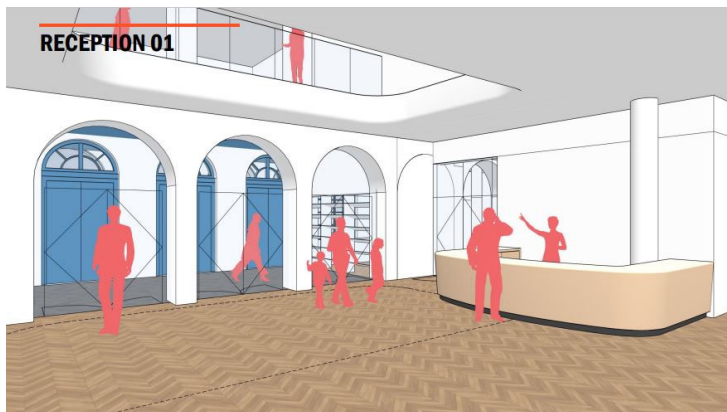
9

RiversideCA.gov

9

CONCEPTUAL PLANS

- Admissions to be located between entrances
- Skylight to be opened up again



10

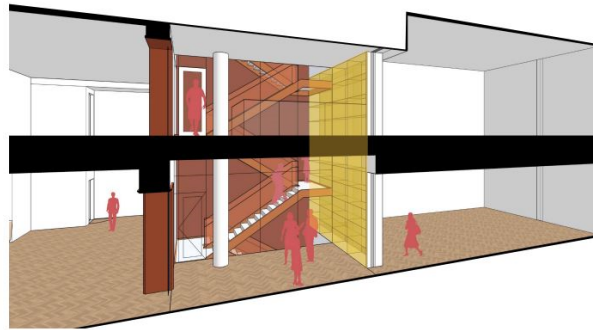
RiversideCA.gov

10

CONCEPTUAL PLANS

- Double-height exhibit wall
- A place to touch on many local stories

MULTI LEVEL DISPLAY @ STAIR



11

RiversideCA.gov

11

CONCEPTUAL PLANS

- Roof terrace for programs and events
- Prioritizing natural history programming

ROOF TERRACE SK01



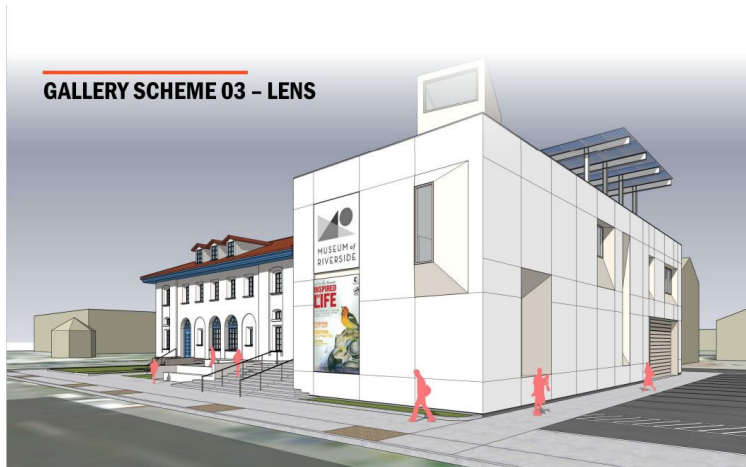
12

RiversideCA.gov

12

CONCEPTUAL PLANS

- One option for exterior of addition
- One challenge is limiting natural light in galleries



13

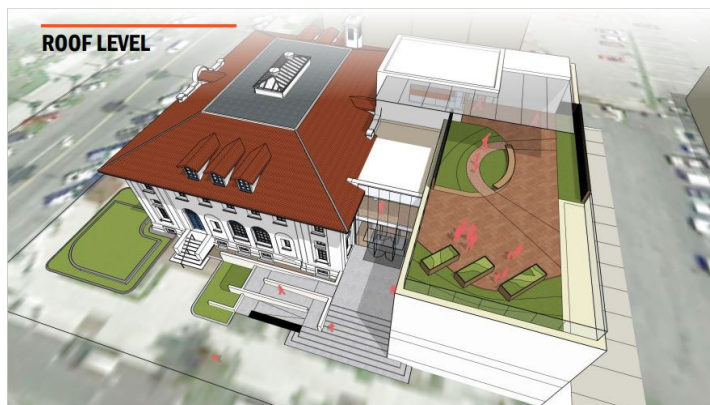


RiversideCA.gov

13

CONCEPTUAL PLANS

- Roof terrace presents unique challenges
- Its appeal is immediate



14



RiversideCA.gov

14

CONCEPTUAL PLANS

- Choosing best location for education space
- Museum did not previously have classroom

EDUCATION- 01

- classroom separated → more privacy/flexibility
- access: through the lobbies
- program: 1,000 SF nature lab, 450 SF classroom



15

RiversideCA.gov

15

CONCEPTUAL PLANS

- To resolve: exterior programming space
- Site support functions



16

RiversideCA.gov

16

CONCEPTUAL PLANS

- “Visitors first” ethic leads choices
- Inclusive
- Engaging and interactive
- Interdisciplinary
- Constantly refreshed



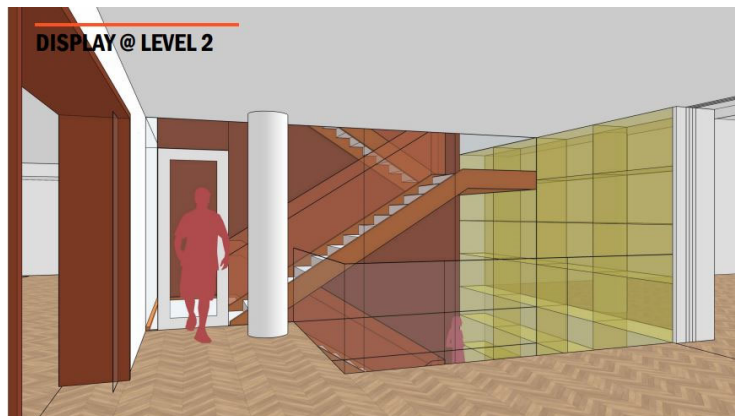
17

RiversideCA.gov

17

YOUR INPUT

- What matters most?
- What seems right?
- What needs works?



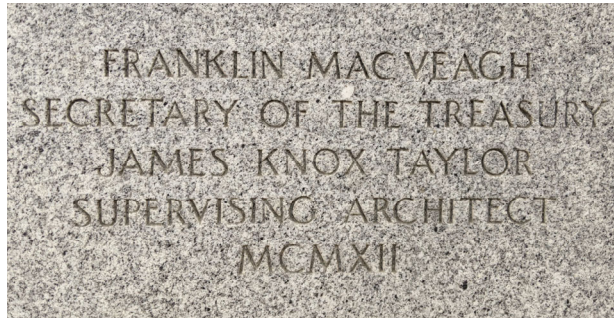
18

RiversideCA.gov

18

THANK YOU

- Share ideas
 - rpeterson@riversideca.gov
 - renovatemuseum@riversideca.gov



19

RiversideCA.gov

19

STRATEGIC PLAN ALIGNMENT

Strategic Priority No. 1 – *Arts, Culture and Recreation*

Goal 1.1 – Strengthen Riverside's portfolio of arts, culture, recreation, senior and lifelong learning programs and amenities through expended community partnerships, shared use opportunities and fund development.

Cross-Cutting Threads



Community Trust



Fiscal Responsibility



Sustainability & Resiliency



Equity



Innovation



20

RiversideCA.gov

20

STRATEGIC PLAN ALIGNMENT



Strategic Priority No. 1 – Arts, Culture and Recreation

Goal 1.1 – Strengthen Riverside's portfolio of arts, culture, recreation, senior and lifelong learning programs and amenities through expended community partnerships, shared use opportunities and fund development.

Goal 1.2 - Enhance equitable access to arts, culture, and recreational service offerings and facilities.



21

RiversideCA.gov

21

RECOMMENDATION

Staff recommends that the Cultural Heritage Board:

1. Receive and file a presentation and provide input on the status of the conceptual designs for the Museum of Riverside's main museum renovation and expansion project.



22

RiversideCA.gov

22