

SAVE YOUR COMMUNITY'S CITRUS

Asian Citrus Psyllid & Huanglongbing



THE ISSUE

- The Asian citrus psyllid (ACP) has been found throughout California.
- The pest can transmit a disease called Huanglongbing (HLB) that kills citrus trees and has no cure.
- Local citrus trees, the commercial citrus industry and the thousands of jobs it supports are at risk.
- It's estimated that 60% of California residences have a citrus tree on their property.



\$3.4 billion in sales



\$7 billion in economic revenue



22,000 jobs



3,900 farmers



292,000 acres of citrus production



THE PEST

- ACP is a tiny insect that feeds on citrus plants
- Spreads a deadly plant disease called HLB
- The best way to prevent HLB is to protect citrus trees from the ACP



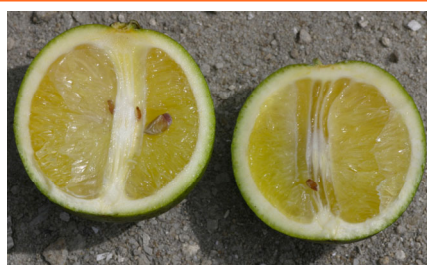
Actual size is 1/8th of an inch



THE DISEASE

Huanglongbing (HLB)

- Kills citrus trees
- No cure
- NOT harmful to humans or animals
- Can take 2-5 years to show symptoms

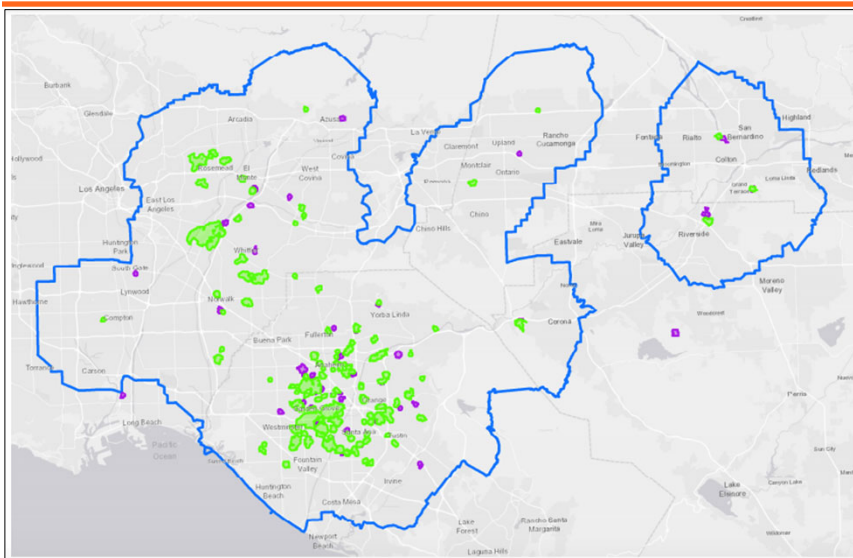


Symptoms

- Asymmetrical yellow leaves
- Corky veins
- Small and bitter fruit
- Premature, excessive fruit drop



HLB IN SOUTHERN CALIFORNIA



- 2,106 HLB-infected trees
- 1,415 square mile quarantine area



WOODCREST CLAS-POSITIVE ACP

Citrus INDUSTRY

First CLas-Positive ACP Found in California Grove
August 7, 2020

An Asian citrus psyllid (ACP) sample has been confirmed positive for *Candidatus Liberibacter asiaticus* (CLas), the bacteria that causes Huanglongbing (HLB). The sample was collected from a commercial citrus grove in the Woodcrest area of Riverside County.

CITRUS INSIDER

MAPS | PSYLLID & DISEASE CONTROL | CALENDAR | NEWS | RESOURCES | ABOUT

August 7, 2020

CLas-positive Asian citrus psyllid found in Riverside commercial grove

Statewide

An Asian citrus psyllid (ACP) sample – confirmed positive for *Candidatus Liberibacter asiaticus* (CLas) the bacteria that causes Huanglongbing (HLB) – was collected from a commercial citrus grove in the Woodcrest area of Riverside County. Confirmed by Citrus Research Board's Jerry Dimittian Laboratory, this single adult psyllid is the first CLas-positive ACP found in a commercial citrus grove in California.

- In August, the first CLas-positive ACP was found in a commercial grove.
 - Found in Woodcrest area of Riverside County
- Additional surveying and testing was conducted in a 250-meter area around the detection site.
- No HLB-infected trees or additional CLas-positive ACP were found in this grove or the surrounding area.
 - The one residential property in 250-meter area with citrus host plants was treated.



PROMISING RESEARCH

- Researchers at UC Riverside are investigating the use of peptides found in the Australian finger lime to fight HLB
- UC Riverside entered into a commercial licensing agreement with a private-sector company to further explore the effectiveness of this treatment
- While not considered a “silver bullet,” it could provide another tool to fight HLB
- It could be years before a peptide treatment is available so citrus growers and homeowners must continue to remain vigilant about protecting citrus trees.



PARTNERSHIPS

- Federal - USDA
- State - Department of Food & Agriculture
 - Department of Pesticide Regulation
 - Office of Environmental Health Hazard Assessment
- Local - County Agricultural Commissioners
 - City/County Officials
- Industry - California Citrus Research Board
 - Citrus Growers
- Residents - Southern California citrus tree owners



ROLE OF AGRICULTURAL COMMISSIONER

County Agricultural Commissioner

Protects consumers, home gardeners and agricultural producers by enforcing laws and regulations, including quarantines, to prevent entry of pests and plant diseases.

Perform inspection at:

- Shipping centers
- Nurseries
- Certified Farmers' Markets
- Citrus Producers & Packers



INFORM CONSTITUENTS

- Only move citrus fruit off of your property after removing stems and leaves and washing the fruit
- Inspect citrus trees monthly, or whenever watering or pruning trees
- Cooperate with agriculture officials conducting detection and eradication efforts
- Treat for ACP or remove tree if you can't take proper care of it
- Only purchase plants from reputable, licensed, local nurseries
- Report potential HLB sightings to the CDFA hotline: **800-491-1899**



REPORTING HLB TO AGRICULTURAL OFFICIALS

Contact the California Department of Food and Agriculture hotline for a free inspection at:
(800) 491-1899

or

Contact the Riverside County Agricultural Commissioner at:
(951) 955-3000

Visit our website or the California Department of Food and Agriculture website at:

CaliforniaCitrusThreat.org

or

CDFA.CA.gov/plant/acp



RESOURCES

ASIAN CITRUS PSYLLID

Asian Citrus Psyllid (ACP) is the vector for Huanglongbing (HLB) and is the most serious citrus pest in California. It is a small, green, pear-shaped insect that feeds on citrus leaves and fruit.

How to spot ACP: Look for yellowing, mottling, and leaf curling on citrus leaves. ACP is often found on the undersides of leaves.

Prevention: Use insecticides to control ACP populations. Prune trees to improve air circulation and reduce humidity. Remove alternate hosts near citrus groves.

CaliforniaCitrusThreat.org

Growers, your help is needed to protect California citrus from HLB!

Growers, your help is needed to protect California citrus from HLB! HLB is a devastating citrus disease that can cause significant economic loss. Growers are encouraged to report any signs of HLB to their local agricultural officials.

How to report HLB: Contact your local agricultural official or the California Department of Food and Agriculture at (800) 491-1899. Provide photos and a description of the symptoms.

CaliforniaCitrusThreat.org

Working Together to Save Your Community's Citrus

Agriculture officials are working to protect and promote citrus trees from the devastating impact of HLB. Growers are encouraged to report any signs of HLB to their local agricultural officials.

How to report HLB: Contact your local agricultural official or the California Department of Food and Agriculture at (800) 491-1899. Provide photos and a description of the symptoms.

CaliforniaCitrusThreat.org

Salve los frutos cítricos de su comunidad

Salve los frutos cítricos de su comunidad. HLB is a devastating citrus disease that can cause significant economic loss. Growers are encouraged to report any signs of HLB to their local agricultural officials.

How to report HLB: Contact your local agricultural official or the California Department of Food and Agriculture at (800) 491-1899. Provide photos and a description of the symptoms.

CaliforniaCitrusThreat.org

SAVING CITRUS DE SU COMUNIDAD

Salve los frutos cítricos de su comunidad. HLB is a devastating citrus disease that can cause significant economic loss. Growers are encouraged to report any signs of HLB to their local agricultural officials.

How to report HLB: Contact your local agricultural official or the California Department of Food and Agriculture at (800) 491-1899. Provide photos and a description of the symptoms.

CaliforniaCitrusThreat.org

