

EXHIBIT "A"  
ZONE CHANGE  
FROM BMP-BUSINESS AND MANUFACTURING PARK  
AND PF - PUBLIC FACILITIES ZONES  
TO  
CR - COMMERCIAL RETAIL ZONE  
P18-0246

APN's: 155-060-030, -031, -332, -033


That certain real property in City of Riverside, County of Riverside, State of California described as follows:

Lots 4, 5, 6 and 7 of Tract 31542 as shown by map on file in Book 462, Pages 74 through 77, Records of Riverside County, State of California.

  
Alan C. Hillwig, PLS  
PLS 5137 4/18/19



DESCRIPTION APPROVAL:

  
CURTIS C. STEPHENS, L.S. 7519 DATE 4/19/19  
CITY SURVEYOR



ISSUED FOR APPROVAL

*Alan C. Hillman*  
ALAN C. HILLMAN, L.S. 5137  
DATE \_\_\_\_\_  
CITY SURVEYOR

Plat Map for  
 Zone Change from BMP -  
 Business and Manufacturing  
 Park and PF - Public Facilities  
 Zones to CR - Commercial  
 Retail Zone

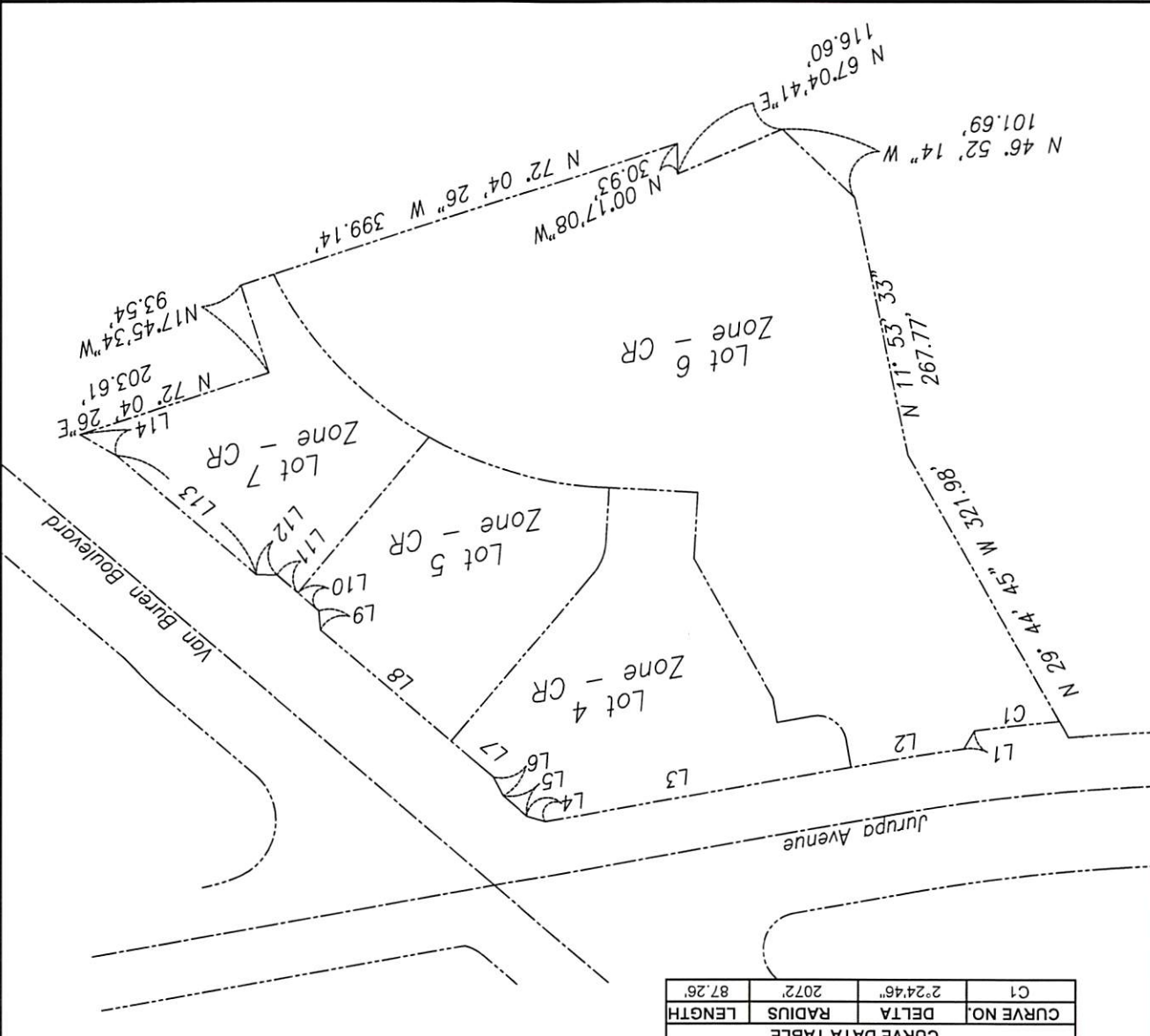
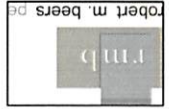
PREPARED BY: R.M.B.  
 DATE: 10-10-18

1 of 1



SEAL:

PREPARED BY: Alan C. Hillwig  
 P.L.S. 5137  
 875 Limonite Avenue, Suite E  
 Jurupa Valley, CA 92509  
 Ph. (951) 360-2070 Fax (951) 360-2080



CURVE NO.	DELTA	RADIUS	LENGTH
C1	2°24'46"	2072'	87.26'

LINE NO.	BEARING	DISTANCE	LINE NO.	BEARING	DISTANCE
L1	N30°18'21"E	19.54'	L7	S49°42'03"E	55.67'
L2	N80°01'00"E	118.57'	L8	S49°42'03"E	175.62'
L3	N80°01'00"E	317.57'	L9	S4°42'03"E	19.35'
L4	S74°50'32"E	19.54'	L10	S49°42'03"E	28.21'
L5	S49°42'03"E	31.82'	L11	S49°42'03"E	27.95'
L6	S27°54'16"E	21.55'	L12	N85°18'23"E	19.35'
L7	S49°42'03"E	55.67'	L13	S49°42'03"E	188.17'
L8	S49°42'03"E	175.62'	L14	N60°23'41"E	43.11'

