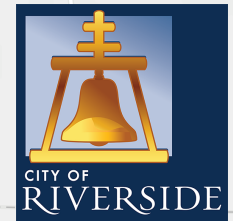


SB9 - Applicability and Constraints

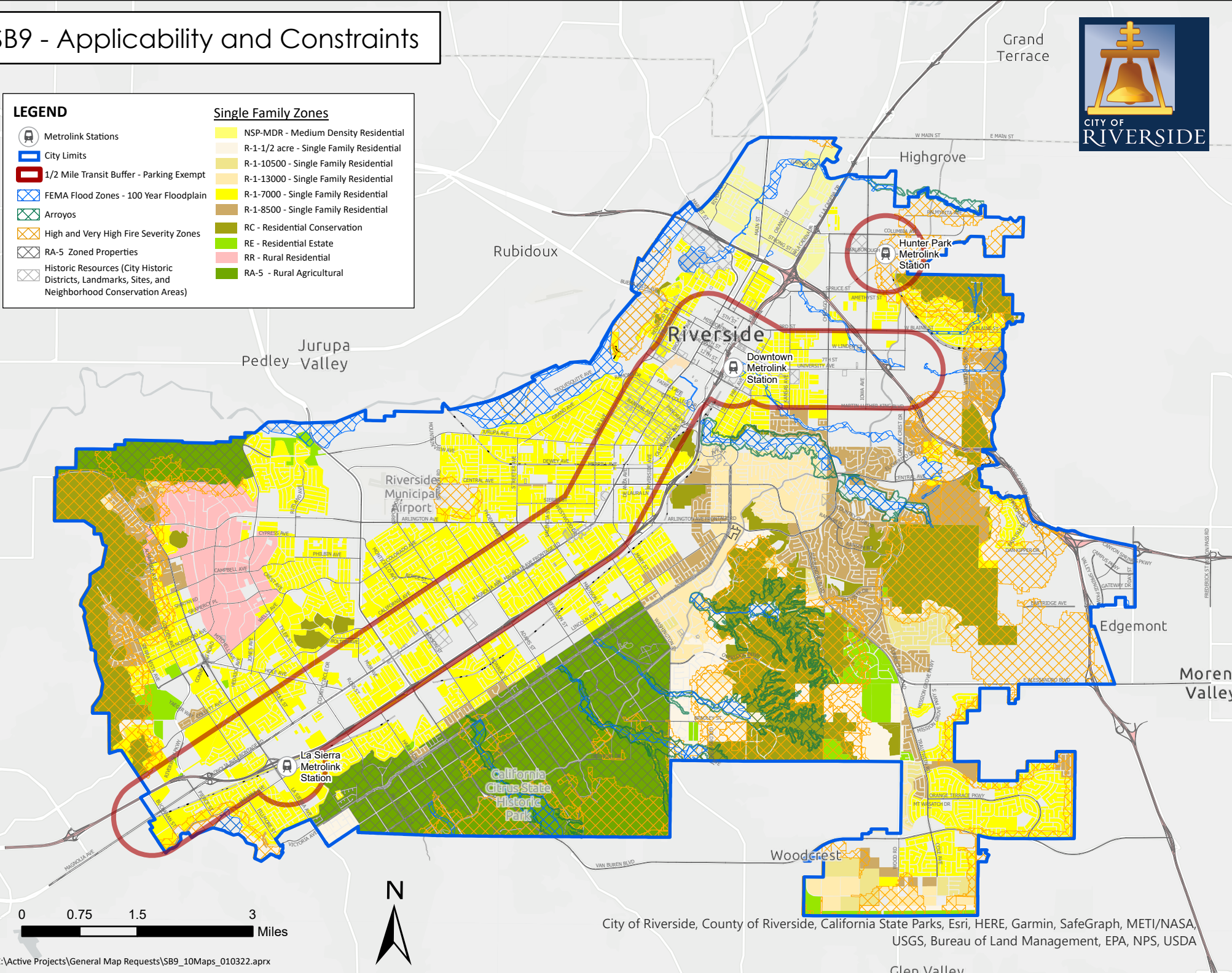


LEGEND

- Metrolink Stations
- City Limits
- 1/2 Mile Transit Buffer - Parking Exempt
- FEMA Flood Zones - 100 Year Floodplain
- Arroyos
- High and Very High Fire Severity Zones
- RA-5 Zoned Properties
- Historic Resources (City Historic Districts, Landmarks, Sites, and Neighborhood Conservation Areas)

Single Family Zones

- NSP-MDR - Medium Density Residential
- R-1-1/2 acre - Single Family Residential
- R-1-10500 - Single Family Residential
- R-1-13000 - Single Family Residential
- R-1-7000 - Single Family Residential
- R-1-8500 - Single Family Residential
- RC - Residential Conservation
- RE - Residential Estate
- RR - Rural Residential
- RA-5 - Rural Agricultural



City of Riverside, County of Riverside, California State Parks, Esri, HERE, Garmin, SafeGraph, METI/NASA, USGS, Bureau of Land Management, EPA, NPS, USDA