

# COMPREHENSIVE PARK MASTER PLAN

**Parks, Recreation and Community Services  
Department**

City Council  
February 4, 2020

RiversideCA.gov

## PURPOSE OF THE PLAN

1. Guide and implementation tool for the management and development of parks and recreation facilities and programs;
2. Identifies local community needs;
3. Updates the general plan policy elements; and
4. Offers recommendations to support the Local Riverside Community.


*“Alleviate parkland shortage, provide parks in underserved areas, and strive to preserve natural resources and open space in a cost-effective manner to enhance the living environment for all residents.” - General Plan*

2



RiversideCA.gov



- ## EXISTING CONDITIONS
- 59 parks
  - 2,519 acres of developed parkland
  - 12 community centers
  - 3 senior centers
  - 8 swimming pools (1 joint use)
  - 23.7 miles of trails
  - 94.5 miles of bike lanes
- 4
- 
- RiversideCA.gov

## COMMUNITY OUTREACH

1. Stakeholder Interviews
2. Focus Groups
3. Community Workshop
4. Sports Organization Questionnaire
5. ESRI Online Survey
6. Telephone Survey



5

RiversideCA.gov

## COMMUNITY OUTREACH STAKEHOLDER INTERVIEWS

### 18 Executive Interviews:

- a) Adequate resources / infrastructure/ funding/ and addressing the rising deferred maintenance condition within the parks;
- b) Concerns about homelessness, outreach to disadvantaged communities, and lack of facilities;
- c) Homelessness and afterschool programs are underserved the most; additionally, there is a need for more music, arts, and cultural based programming; and
- d) Pool/ aquatic facility west of Arlington. Other mentions included sports facilities, trails, and a senior facility at Orange Crest.



6

RiversideCA.gov

## COMMUNITY OUTREACH FOCUS GROUPS

### 5 Focus Groups:

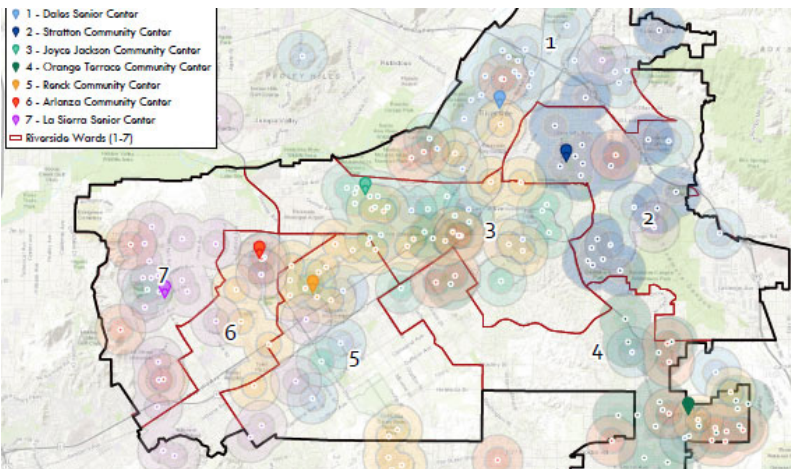
- a) Facility Mentions: More shade structures, improved trail facilities, additional sports facilities / parking, additional Community Centers, Homeless Shelters; and
- b) Program Mentions: Sports training programs, nature / outdoor educational programs, transportation programs, community outreach programs.



7

RiversideCA.gov

## COMMUNITY OUTREACH WORKSHOPS



1. 7 Community Workshops (one in each ward);
2. Issues: Homelessness, Safety / Crime, Traffic and Parking;
3. Facilities: Pools / Heated Pool Facilities, Restrooms, Trails, Shade, Modernizing Facilities; and
4. Programs: Patrolling / Security / Ranger Program, Pool Activities, Nutritional Programs, Programs offered Online.



8

RiversideCA.gov

## COMMUNITY OUTREACH SPORTS ORGS.

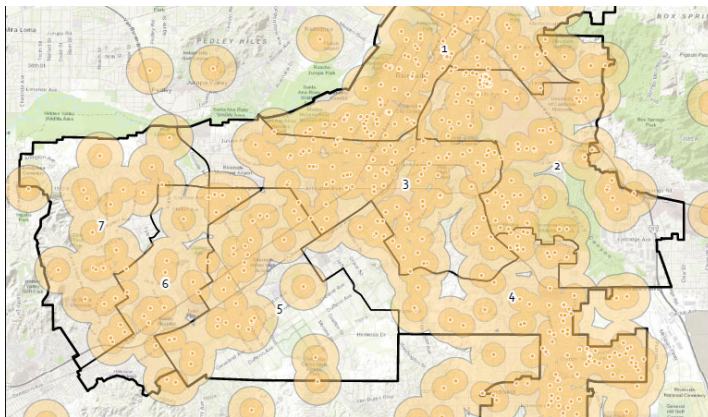


1. 48 Sports Organizations reviewed and analyzed:
  - a) Percentage of resident players
  - b) Size of teams
  - c) Number of players
  - d) Seasonality
  - e) Field Turnovers



9

## COMMUNITY OUTREACH ONLINE SURVEY



1. 633 responses (571 identified themselves as residents);
2. Geo-located / Citywide distribution;
3. Questions on program and facility usage, satisfaction, and desires.



10

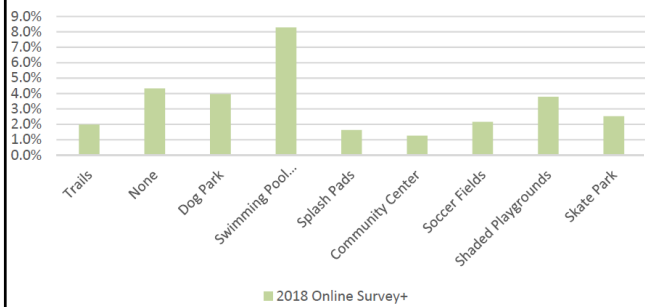
# COMMUNITY OUTREACH TELEPHONE SURVEY

1. 300 completed surveys representing over 900 residents;
2. Conducted in English and Spanish; and
3. 2002 and 2018 data collected and reviewed.

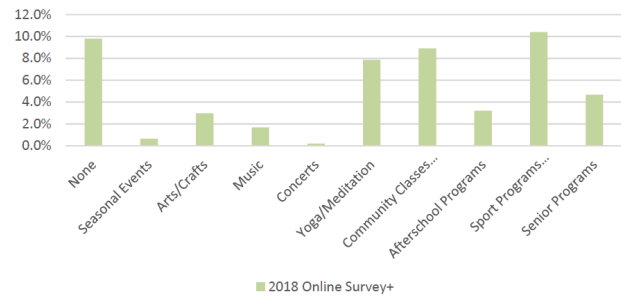


# COMMUNITY OUTREACH ONLINE SURVEY

Recreation Facility Desired Most

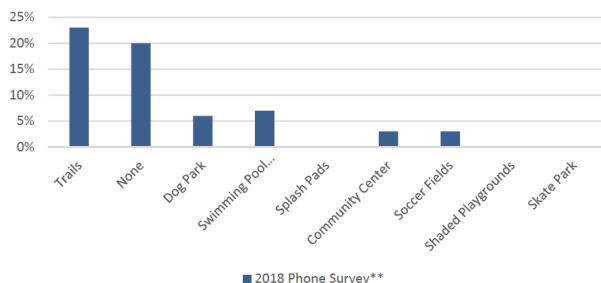


Recreation Programs Desired Most

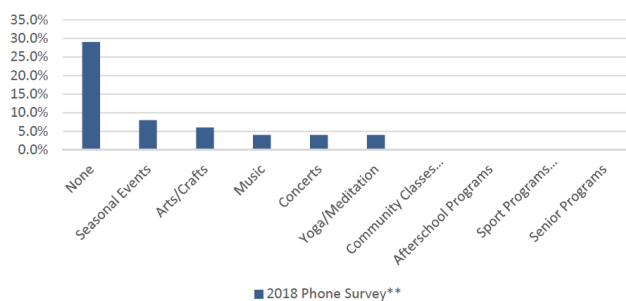


# COMMUNITY OUTREACH TELEPHONE SURVEY

Recreation Facility Desired Most



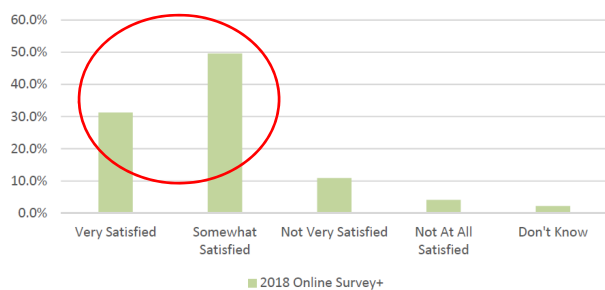
Recreation Programs Desired Most



RiversideCA.gov

# COMMUNITY OUTREACH ONLINE SURVEY

Rating Recreation Facilities Maintenance



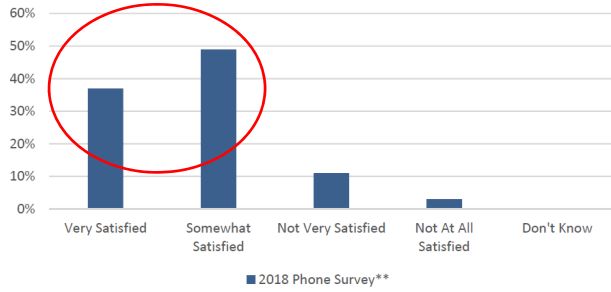
Rating Satisfaction with Recreation Facilities and Programs



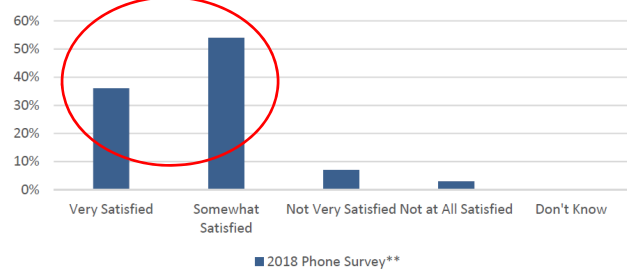
RiversideCA.gov

# COMMUNITY OUTREACH TELEPHONE SURVEY

Rating Recreation Facilities Maintenance



Rating Satisfaction with Recreation Facilities and Programs



## NEEDS ANALYSIS



How many Organized Sports Fields are Needed?



Are Neighborhood Parks Conveniently and Appropriately Distributed throughout the City?



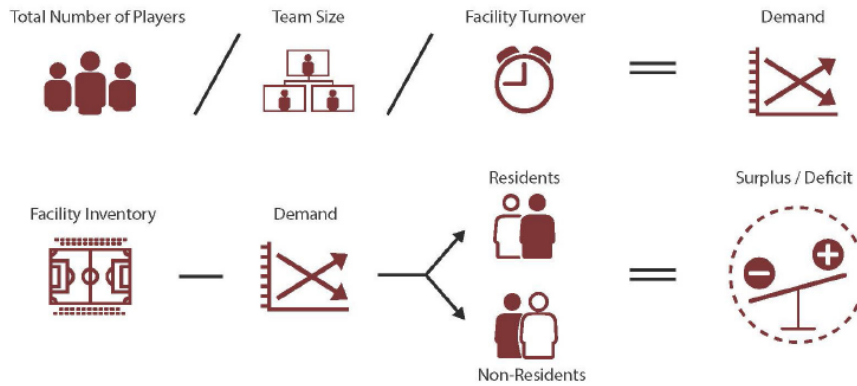
What are the top priority facility needs for Riverside?





# NEEDS ANALYSIS

## HOW MANY ORGANIZED SPORTS FIELDS ARE NEEDED?



17

RiversideCA.gov

Needs Analysis Considering Demand from All Sports Organization Players Using Riverside Facilities

Facility	Facility Need Ratio - City of Riverside			2018 Needs	Existing City Facilities	Surplus / Deficit (-)	School Facilities Available**	Other Facilities Available*	Total Facilities Available	Total Surplus/ Deficit(-)
	Organized Adult	Organized Youth	pop.							
Soccer	Organized Adult	1/ 23402	pop.	13.9	13.5	-0.4	6.5	10	30	16.1
	Organized Youth	1/ 17646	pop.	18.5	2.5	-16.0	20.5	12	35	16.5
Football	Organized Adult	1/ 66762	pop.	4.9	4	-0.9	4.5	0	8.5	3.6
Baseball	Organized Adult	1/ 28957	pop.	11.3	8.5	-2.8	7	0	15.5	4.2
	Organized Youth	1/ 17842	pop.	18.3	18	-0.3	0.15	1	19.15	0.9
Softball	Organized Adult	1/ 9417	pop.	34.6	17.5	-17.1	6.5	1	25	-9.6
	Organized Youth	1/ 53021	pop.	6.1	1	-5.1	0	0	1	-5.1
Rugby		1/ 72413	pop.	4.5	0.5	-4.0	0	0	0.5	-4.0
Swimming (Competition)		1/ 339438	pop.	1.0	2	1.0	5.5	0	7.5	6.5



18

RiversideCA.gov


Sport Assessed	These numbers are based on participation rates by the local		These numbers are existing facilities compared to populations of communities that are submitting data. These are not demand numbers but only an average of what people have not what they need.			
	Local Demand Calculation		NRPA Existing Facility Benchmark 1		NRPA Existing Facility Benchmark 2	
	Riverside Local Demand (1 per x population)	Demand	National Standard from 2018 NRPA Report (1 per x population) data based on "all agencies column"	Demand	National Standard from 2018 NRPA Report (1 per x population) data based on "more than 2,500" (riverside has a population density of 4,000 / square mile)	Demand
Soccer						
Large Regulation	23402	13.9	11383	28.6	15746	20.7
Small Regulation	17646	18.5	6039	54.0	8773	37.1

1 Large Soccer Field (w/ lights) = \$300,000

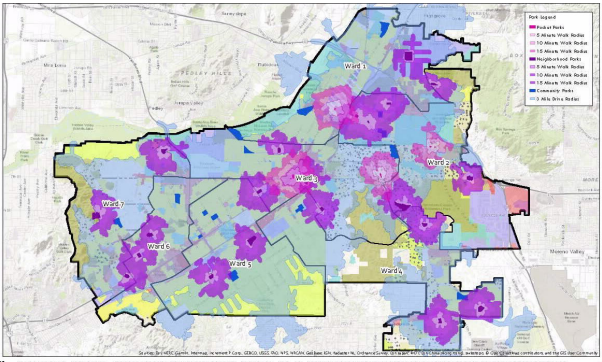
Local Riverside Need                      14 Fields = \$4.2M

National Standard Equivalent        21 Fields = \$6.3M

**\$2.1 M** in expenses over demand



RiversideCA.gov

## NEEDS ANALYSIS: SERVICE ANALYSIS



Service Gap Analysis - Pocket Parks / Neighborhood Parks (5, 10, 15 Minute Walk Radius) & Community Parks (3 Mile Drive radius)


- 5 minute walk – 15,924 (5.0%) population
- 10 minute walk – 39,318 (12.0%) population
- 15 minute walk – 66,621 (20.0%) population
- Residents adjacent to Community Parks (measured in a 3 mile radius due to the automobile-centric design and programming) is an estimated 320,746 (98%)
- 8.36 ac. / 1000 population (developed and undeveloped)


RiversideCA.gov

## NEEDS ANALYSIS

### WHAT ARE THE TOP PRIORITY FACILITY NEEDS FOR RIVERSIDE?

One on One / Small Group						Public Community Consensus Building							Direct Survey		
Stakeholder Interviews	Focus Group 1 - Neighborhood Parks & Advisory Groups	Focus Group 2 - Seniors	Focus Group 3 - Business, Foundations & Gov. Agencies	Focus Group 4 - Healthy Lifestyle	Focus Group 5 - Special Interest Groups	WORKSHOP 1	WORKSHOP 2	WORKSHOP 3	WORKSHOP 4	WORKSHOP 5	WORKSHOP 6	WORKSHOP 7	SPORTS ORG	ONLINE SURVEY	TELEPHONE SURVEY


21

[RiversideCA.gov](http://RiversideCA.gov)

## RECOMMENDATIONS

Parks Maintenance Recommendations

Park Facility Recommendations

Program Recommendations

General Plan Policy Recommendations


22

[RiversideCA.gov](http://RiversideCA.gov)

## RECOMMENDATIONS : MAINTENANCE



## RECOMMENDATIONS : FACILITY

- Amphitheater
- Dog Park
- Community Garden
- Gym / Recreation Center
- Heated Pool
- Mt. Rubidoux
- New Aquatic Facility /Pool (West of Arlington)
- Open Space
- Parking
- Pocket Parks / Linear Parks
- Santa Ana River Trail
- Shade Structures
- Sports Complex
- Trails



## RECOMMENDATIONS : PROGRAM

- Family / Intergenerational / Parenting Programs
- Funding for Parks and Facility Maintenance
- Homeless
- Schools / Grants / Fundraising / Non-Profits
- Seniors / Senior Center
- Security / Safety / Police
- Social Justice / Social Services
- Sponsorships / Grants / Fundraising
- Transportation



25

RiversideCA.gov

## RECOMMENDATIONS



1. General Plan Policy Recommendations:
  - a) General Plan—Parks and Recreation Element;
  - b) General Plan—Land Use and Urban Design Element;
  - c) General Plan—Public Facilities and Infrastructure Element; and
  - d) General Plan—Open Space and Conservation Element.



26

RiversideCA.gov

## FUNDING AND IMPLEMENTATION



Funding Sources for Parks and Recreation



Current and Projected Capital Project Costs



27

RiversideCA.gov

## FUNDING SOURCES FOR PARKS AND RECREATION

State, Federal and Foundation Grants

Development Related

Bonds

Taxes

Special District Assessments

Revenue from Operations

Non-Profit Foundation/Planned Giving

Sponsorship (Naming Rights)

Private Giving

Collaborative Financing



28

RiversideCA.gov

## CURRENT AND PROJECTED CAPITAL PROJECT COSTS

**\$158,331,198** in park specific renovations to developed parkland:

- a) **\$74,550,970** in existing facility improvements
- b) **\$75,044,228** in anticipated ADA improvements
- c) **\$8,736,000** in citywide projects



## RECOMMENDATION

That the City Council adopt the Park Master Plan.

