



**Wards 1, 2, 3, 4, and 5 – Review and Prioritization of  
Potential Railroad Grade Separations Along the  
Burlington Northern Santa Fe Railroad at Jackson Street,  
Mary Street, Spruce Street, and Third Street**

**Public Works Department**

**Transportation Committee Meeting  
February 9, 2017**

RiversideCA.gov

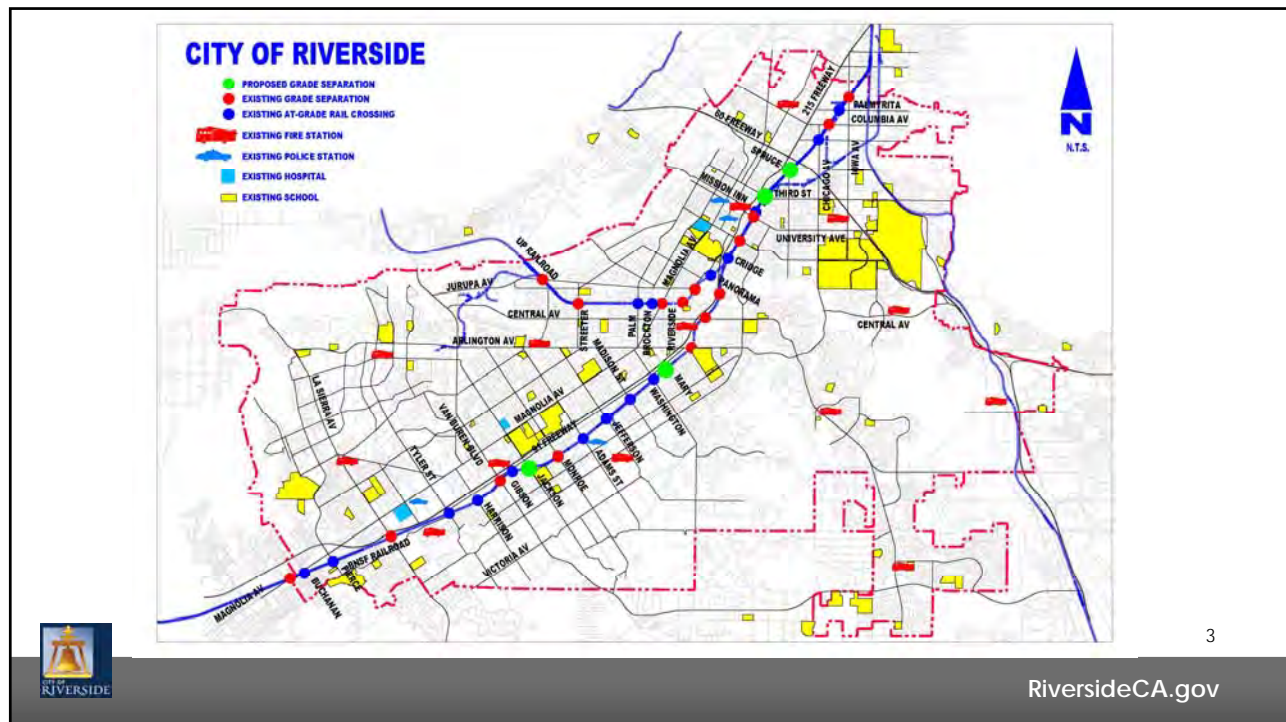
**BACKGROUND**

1. March 17, 2015 – City Council received a report on prioritization of Jackson St., Madison St., Spruce St., and Third St. rail crossings for grade separation and continued discussion pending the collection of pedestrian, bicycle, and commercial vehicular traffic counts.
2. May 5, 2015 – City Council approved the Jackson St., Mary St., Spruce St., and Third St. rail crossings for conceptual grade separation design and future funding opportunities.



2

RiversideCA.gov





Jackson Street Grade Separation – Alternative 2

5



RiversideCA.gov



Mary Street Grade Separation – Alternative 1

6



RiversideCA.gov





Mary Street Grade Separation – Alternative 2

7



RiversideCA.gov



Spruce Street Grade Separation – Alternative 1

8



RiversideCA.gov

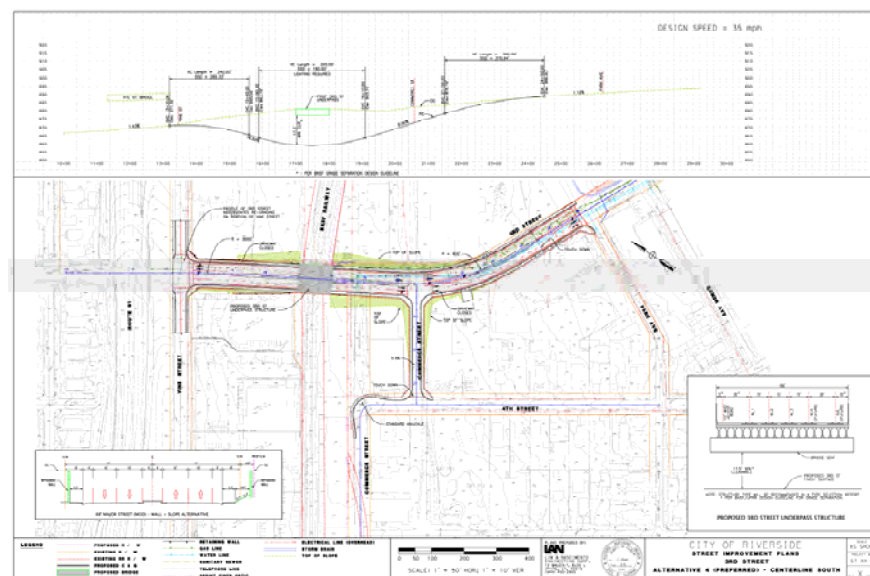


Spruce Street Grade Separation – Alternative 2

9



RiversideCA.gov



Third Street Grade Separation – Preferred Alternative

10



RiversideCA.gov

## Crossing Data

Location	Average Daily Traffic (2015)	School Bus Crossings	RTA Bus Count	Pedestrians	Bicycles	Freeway Connectivity	Cost (\$MM)
Jackson St.	7,241	50	-	399	29	No	35
Mary St.	16,069	40	-	146	71	No	35
Spruce St.	14,613	550	-	36	61	Yes	50
Third St.	11,472	400	23/41	137	95	Yes	45

Location	Average Daily Train Count	Gate Down Time - Minutes	Vehicles Queued behind Gates	Train Accidents: Fatal/Non-Fatal (Past 10 Years)	2012 RCTC Priority Group	Quiet Zone
Jackson St.	107	166	625	1/0	3	Yes
Mary St.	107	161	766	1/0	2	Yes
Spruce St.	123	244	2196	1/2	1	No
Third St.	123	256	1339	0/1	1	No



11

RiversideCA.gov

## Evaluation Matrix

Location	Train Count (10%)	Train Noise (10%)	ADT (10%)	Bus Count (10%)	Freeway Connectivity (10%)	Cost (10%)	RCTC Priority (10%)	TUMF Network (15%)	Accident History (15%)	Total (100%)
Jackson St.	8.7	0	4.5	0.9	0	10	6	0	5	35.1
Mary St.	8.7	0	10	0.7	0	10	8	0	5	42.4
Spruce St.	10	10	9	10	10	7	10	0	15	81.0
Third St.	10	10	7.1	8	10	7.8	10	15	5	82.9



12

RiversideCA.gov

## RECOMMENDATION

That the Transportation Committee recommend that City Council:

1. Approve the Third Street as the top priority railroad grade separation;
2. Adopt a priority order for the three remaining grade separations; and
3. Direct the Public Works Department to begin the Project Approval and Environmental Document phase of the Third Street grade separation.



13

RiversideCA.gov