



## SOFTWARE LICENSE RENEWAL WITH SCHNEIDER ELECTRIC SMART GRID SOLUTIONS, LLC

Innovation and Technology Department

Board of Public Utilities  
November 8, 2021

RiversideCA.gov

### BACKGROUND

1. On June 20, 2006, the City executed an agreement with Telvent USA, LLC (formerly Miner and Miner, Consulting Engineers, Inc.) for a gap analysis for the design of a computerized Geographic Information System (GIS). The agreement includes Software License Agreement Contract no. 2006-224.
2. On November 18, 2011, the Board approved the First Addendum to the Software License Agreement (SLA) with Telvent USA, LLC (formerly Telvent USA Corporation) to add a three-year Enterprise License Agreement (ELA) at an annual cost of \$115,000 for ArcFM licensing.



2

RiversideCA.gov

## BACKGROUND

3. On June 6, 2014, the Board approved the First Amendment to the First Addendum to the SLA to extend the ELA to November 1, 2016, at no additional cost
4. On January 9, 2017, the Board approved the Second Amendment to the First Addendum of the SLA to extend the ELA for three years, to October 31, 2019, at an annual cost of \$115,000, for a total of \$345,000
5. The Third Amendment to the First Addendum of the SLA to the ELA was executed on April 28, 2017.



3

RiversideCA.gov

## BACKGROUND

6. On November 25, 2019, the Board approved the Fourth Amendment to the First Addendum of the Software License Agreement No. 2006-224 with Telvent USA, LLC, to extend the Enterprise License Agreement for the Geographic Information System for two-years, in the amount of \$230,000, for a total cost of \$947,630.



4

RiversideCA.gov

## DISCUSSION

1. Addendum 2 extends the existing license for an additional three years at an annual cost of \$115,000, for a total cost of \$345,000. The contract extension will allow the city to retain the same annual pricing provided since 2011.
2. The enterprise licensing of ArcFM enables RPU to:
  - Deploy GIS desktop software for editing and viewing utility data within an Esri ArcGIS software environment
  - It is an extension to ArcGIS desktop for performing utility-specific workflows including utility modeling.
  - ArcFM provides a web-component for display of the utility data called ArcFM Web.
  - Is critical for the smooth migration from legacy systems to modern enterprise applications.



5

RiversideCA.gov

## STRATEGIC PLAN ALIGNMENT

- Strategic Priority 4, Environmental Stewardship
  - Goal 4.2. Sustainably manage local water resources to maximize reliability and advance water reuse to ensure safe, reliable and affordable water to our community.
- Strategic Priority 6, Infrastructure, Mobility & Connectivity
  - *Wonderware Software for RERC and Springs*
  - Goal 6.2. Maintain, protect and improve assets and infrastructure within the City's built environment to ensure and enhance reliability, resiliency, sustainability, and facilitate connectivity.
  - Goal 6.4 Incorporate Smart City strategies into the planning and development of local infrastructure projects.



6

RiversideCA.gov

## STRATEGIC PLAN ALIGNMENT

1. The item aligns with EACH of the five Cross-Cutting Threads in the following ways:

**a) Community Trust:** ArcFM software provides a current and accurate view of assets which is key to maintaining a utility infrastructure. Utility asset management enables electric utilities to manage landbase data, critical assets, tracking age, usage, and maintenance history. Proactive monitoring of utility infrastructure and assets will minimize the risk of equipment failure and its negative impact on local community and businesses, such as power outages or water main outages due to the aging equipment, helping improve community trust.

7



RiversideCA.gov

## STRATEGIC PLAN ALIGNMENT CONT.

- b) Equity:** ArcFM software will ensure that the utility infrastructure can safely and effectively operate and provide reliable electricity benefitting the entire city.
- c) Fiscal Responsibility:** Maintaining the operating efficiency of the water and electric utility assets using ArcFM software will avoid service interruptions and potential costly upgrades in the future. It also ensures that the water and power distribution will remain in operation and avoid potential fines for non-compliance with various regulations.

8



RiversideCA.gov

## STRATEGIC PLAN ALIGNMENT CONT.

- d) **Innovation:** ArcFM is a complete out-of-the-box enterprise GIS solution designed to meet the needs of utilities including electric and water. This innovative solution maintains and tracks the lifecycle of critical assets and landbase data
- e) **Sustainability & Resiliency:** The ArcFM software ensures that the utility infrastructure is able to operate in the most effective way possible without any disruptions in services.

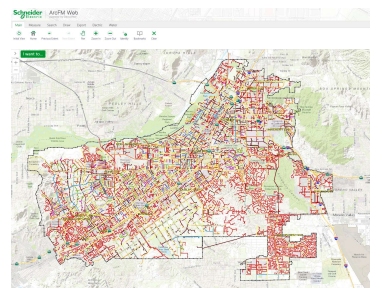


9

RiversideCA.gov

## WHAT IS ARCFM?

- ArcFM is a powerful collection of tools for managing, modeling, and editing utility landbase data in an enterprise system.
- The City uses it to trace electric circuits and to maintain associated assets.
- Electric Tracing is used to check how the current is flowing through a network of connected feature assets such as switches and transformers.



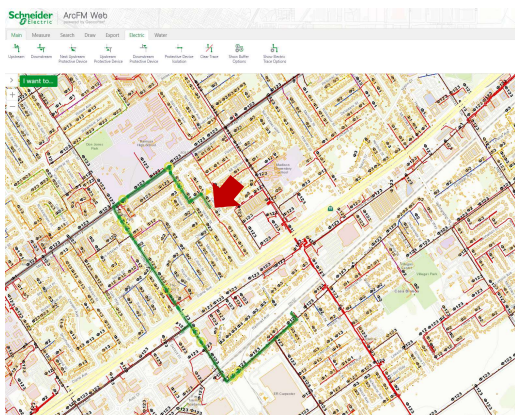
10



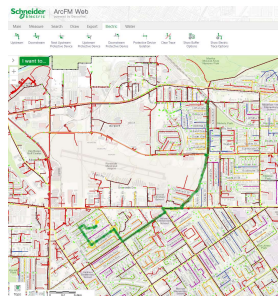
RiversideCA.gov

## ARCFM

### Upstream Trace



Trace circuit connectivity from any point on the electric network up towards the substation.

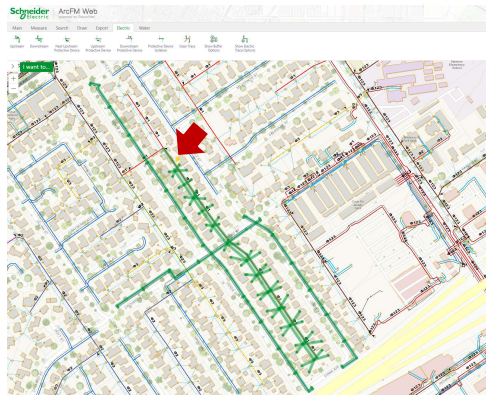


11

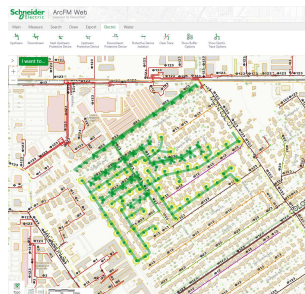
[RiversideCA.gov](http://RiversideCA.gov)

## ARCFM

### Downstream Trace



Trace circuit connectivity from any point on the electric network down towards the end points.

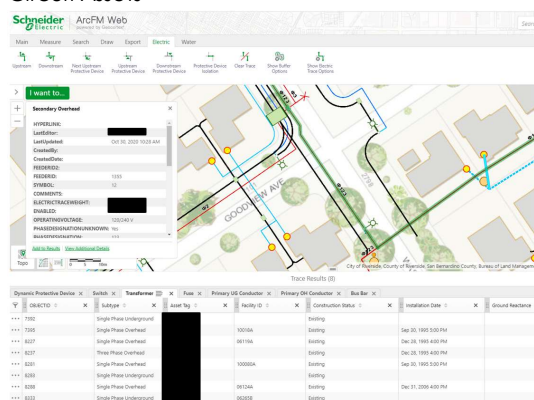


12

[RiversideCA.gov](http://RiversideCA.gov)

## ARCFM

### Circuit Assets



Trace circuits and identify all the feature assets along the circuit



13

[RiversideCA.gov](http://RiversideCA.gov)

## ARCFM

### Benefits –

- Used by dispatchers and field crews to identify circuits to isolate during maintenance
- Better equip field crews to see the impacted area on map before they schedule to replace switches and/or transformers
- Measure circuit performance and identify distribution load on circuit switches



14

[RiversideCA.gov](http://RiversideCA.gov)

## RECOMMENDATIONS

That the Board of Public Utilities:

1. Authorize the expenditure for Addendum 2 to the Software License Agreement Contract No. 2006-224 with Schneider Electric Smart Grid Solutions, LLC, for three-years, at an annual cost of \$115,000, in the total amount of \$345,000; and
2. Recommend that the City Council approve Addendum 2 Software License Agreement with Schneider Electric Smart Grid Solutions, LLC, and authorize the City Manager, or designee, to execute that agreement including making minor non-substantive changes.



15

RiversideCA.gov