



SPEED LIMIT ZONE ESTABLISHMENT ON APPIAN WAY AND REVISIONS ON ACORN STREET, AND MISSION GROVE PARKWAY

Public Works Department

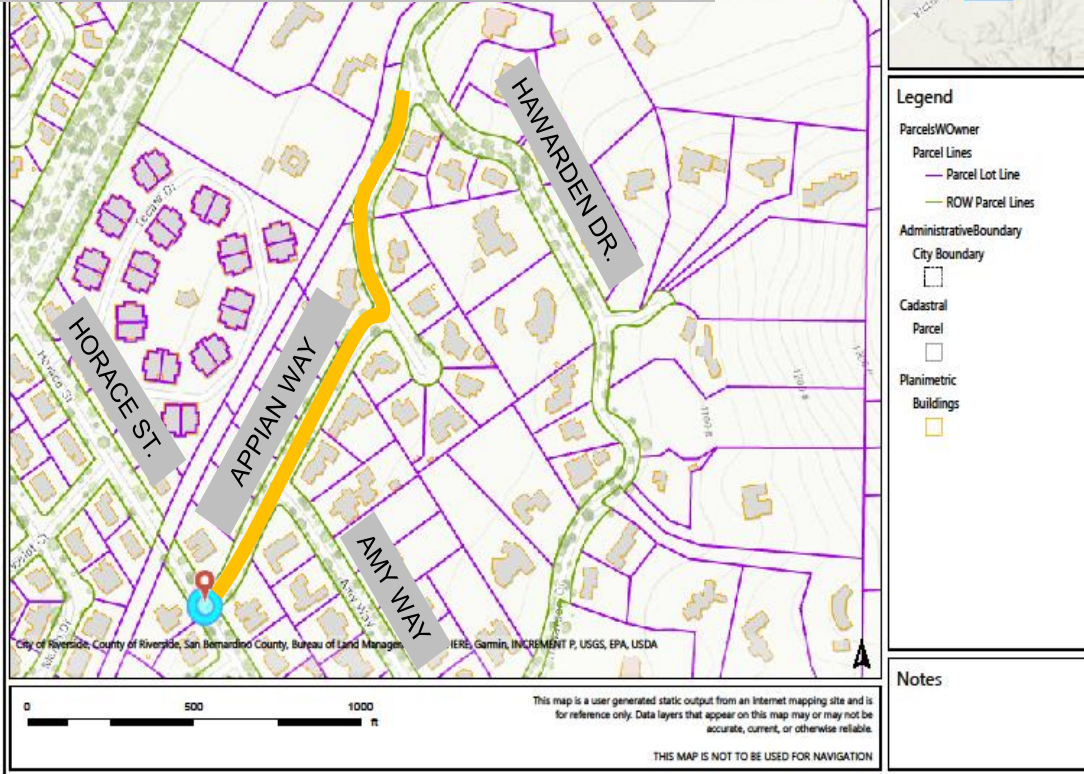
Meeting

Transportation Board: August 7, 2024

SITE & AERIAL MAPS APPIAN WAY

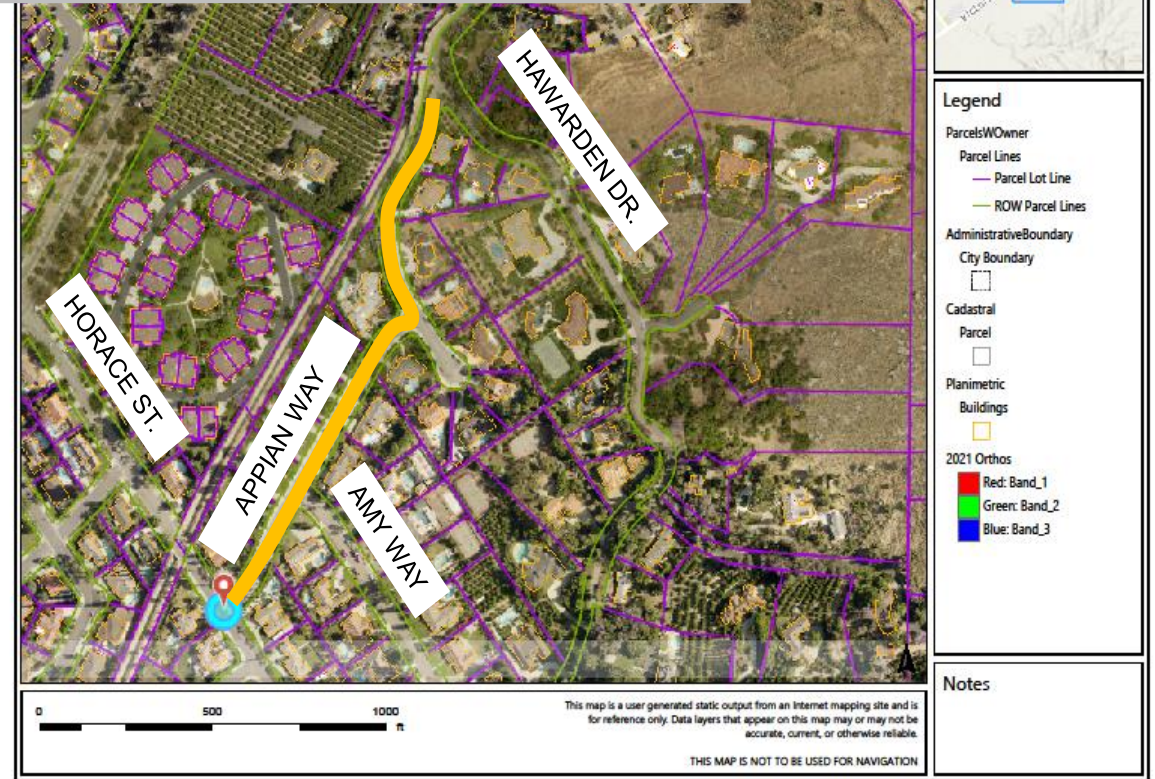
SPEED LIMIT ZONE ESTABLISHMENT – APPIAN WAY
FROM HORACE ST. TO HAWARDEN DR.

Proposed establishment of 25 MPH speed limit zone



SPEED LIMIT ZONE ESTABLISHMENT – APPIAN WAY
FROM HORACE ST. TO HAWARDEN DR.

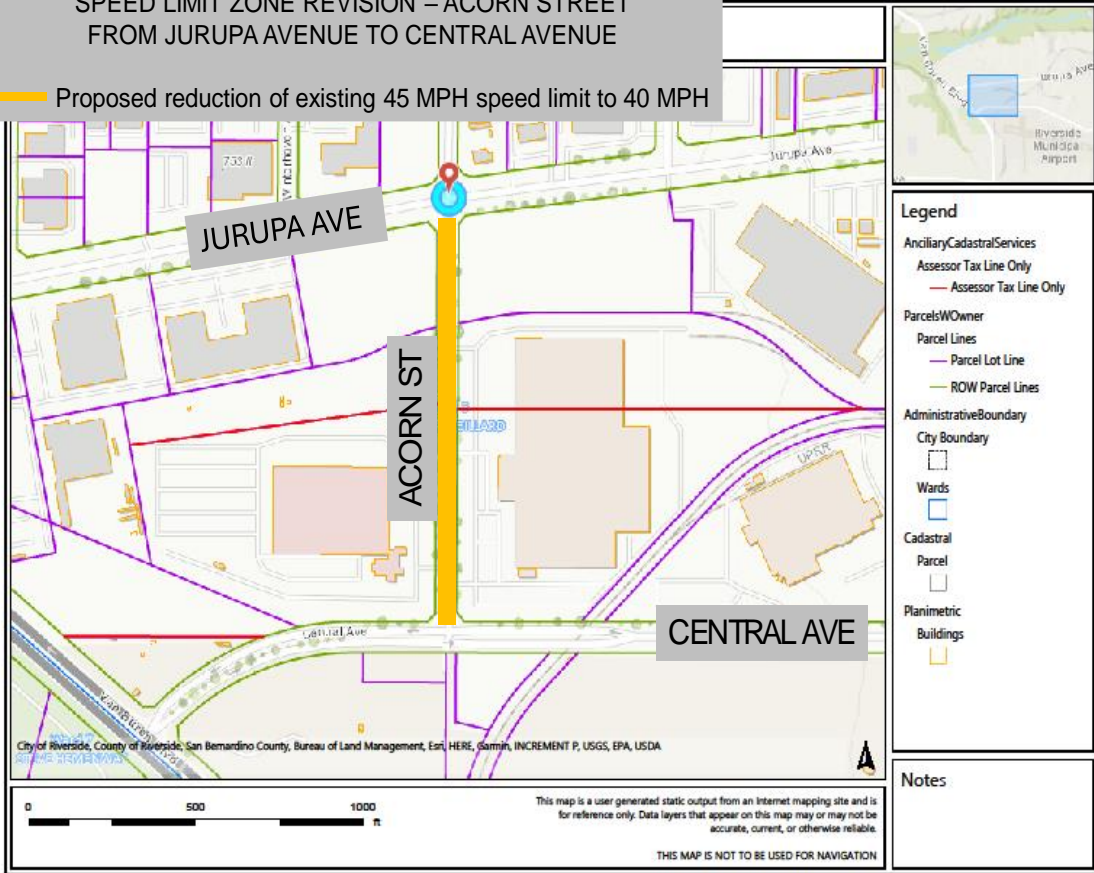
Proposed establishment of 25 MPH speed limit zone



SITE & AERIAL MAPS ACORN STREET

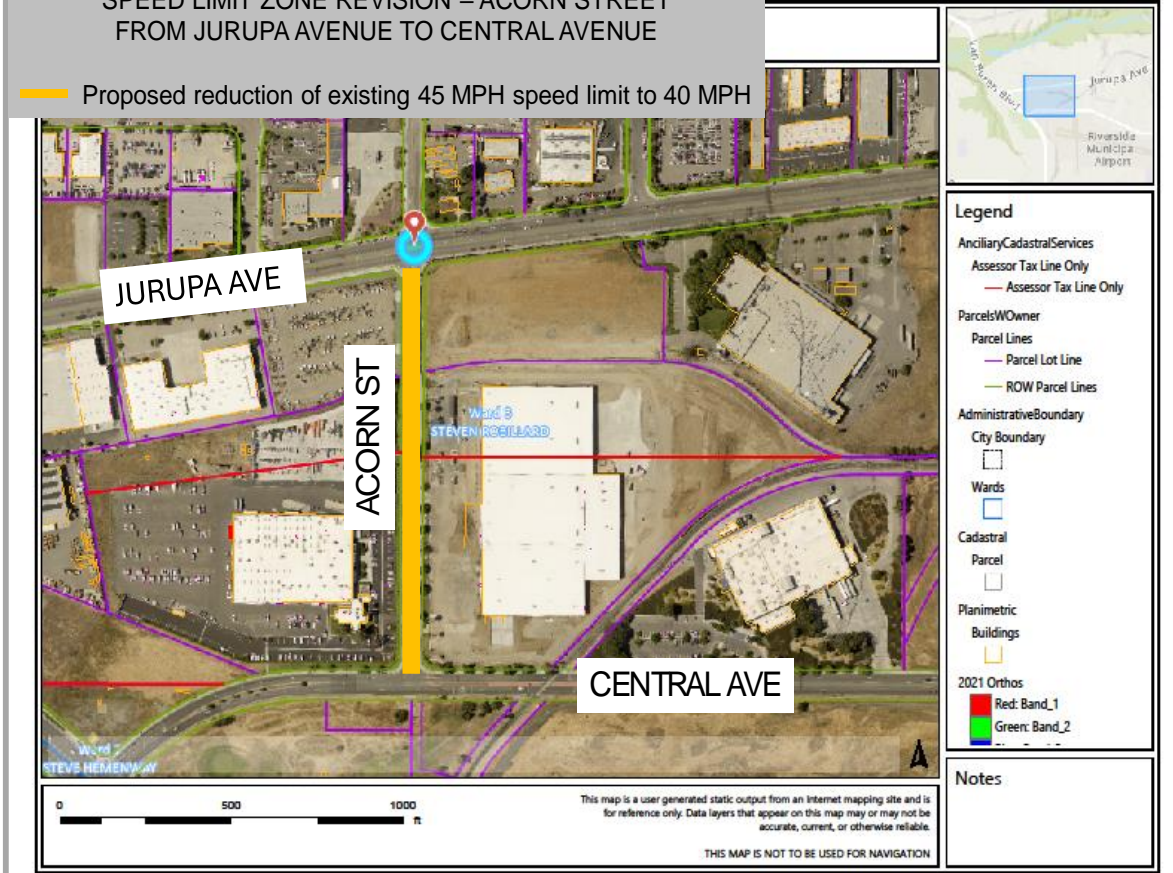
SPEED LIMIT ZONE REVISION – ACORN STREET
FROM JURUPA AVENUE TO CENTRAL AVENUE

Proposed reduction of existing 45 MPH speed limit to 40 MPH



SPEED LIMIT ZONE REVISION – ACORN STREET
FROM JURUPA AVENUE TO CENTRAL AVENUE

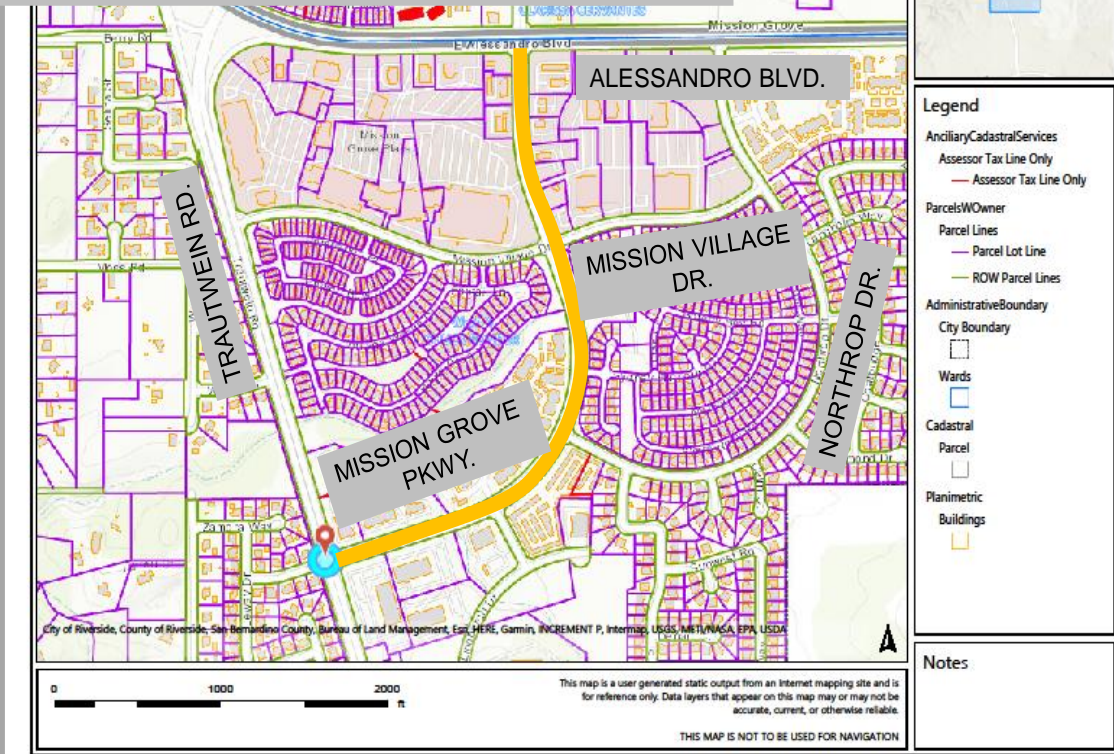
Proposed reduction of existing 45 MPH speed limit to 40 MPH



SITE & AERIAL MAPS MISSION GROVE PARKWAY

SPEED LIMIT ZONE REVISION – MISSION GROVE PARKWAY FROM ALESSANDRO BLVD. TO TRAUTWEIN RD.

Proposed reduction of existing 45 MPH speed limit to 40 MPH



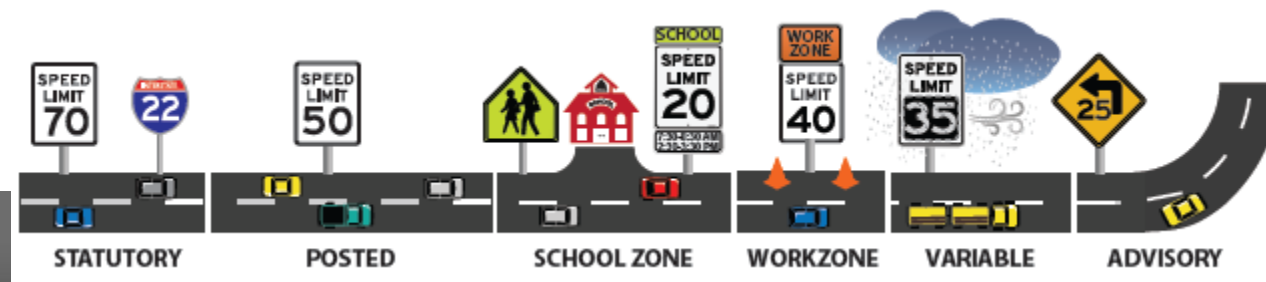
SPEED LIMIT ZONE REVISION – MISSION GROVE PARKWAY FROM ALESSANDRO BLVD. TO TRAUTWEIN RD.

Proposed reduction of existing 45 MPH speed limit to 40 MPH



BACKGROUND

- Public Works performs speed surveys to establish appropriate speed limits on City streets including those classified as collector or arterial roadways and local roadways which do not meet the California Vehicle Code (CVC) prima facie criteria.
- These surveys include consideration of prevailing speeds, accident data, unusual conditions not readily apparent to motorists, residential density, and pedestrian and bicyclist safety and are performed in accordance with the CVC and CA Manual of Uniform Traffic Control Devices (MUTCD) and enable both establishment and enforcement of the posted speed limit on City streets.



DISCUSSION

1. Appian Way from Horace St. to Hawarden Dr. is a two-lane local road which does not meet CVC 25 MPH prima facie criteria. A Traffic and Engineering Survey concluded the 85th percentile speed to be 30 MPH.

As a result of survey findings and noted unusual conditions establishment of a 25 MPH speed limit is recommended;



DISCUSSION



2. Acorn St. from Jurupa Ave. to Central Ave. is a two-lane collector road with an existing 45 MPH speed limit. An updated speed survey concluded the 85th percentile speed to be 41 MPH. As a result of the survey findings revision of the existing speed limit zone reducing the speed limit from 45 MPH to 40 MPH is recommended; and

DISCUSSION

3. Mission Grove Pkwy. from Alessandro Blvd. to Trautwein Rd. is a four-lane arterial roadway with an existing 45 MPH speed limit. An updated speed survey concluded the 85th percentile speed to be 42 MPH. As a result of the survey findings revision of the existing speed limit zone reducing the speed limit from 45 MPH to 40 MPH is recommended.



STRATEGIC PLAN ALIGNMENT



Infrastructure, Mobility & Connectivity

Ensure safe, reliable infrastructure that benefits the community and facilitates connection between people, place and information.

- 2.4 “Support programs and innovations that enhance community safety, encourage neighborhood engagement, and build public trust.”

Cross-Cutting Threads

This item aligns with these threads.



Community Trust



Fiscal Responsibility



Equity



Sustainability & Resiliency

RECOMMENDATION

That the Transportation Board recommend that the City Council approve:

1. Establishment of a 25 MPH speed limit zone on Appian Way from Horace Street to Hawarden Drive;
2. Reducing the established speed limit on Acorn Street from Jurupa Avenue to Central Avenue from 45 MPH to 40 MPH; and
3. Reducing the established speed limit on Mission Grove Parkway from Alessandro Boulevard to Trautwein Road from 45 MPH to 40 MPH.

