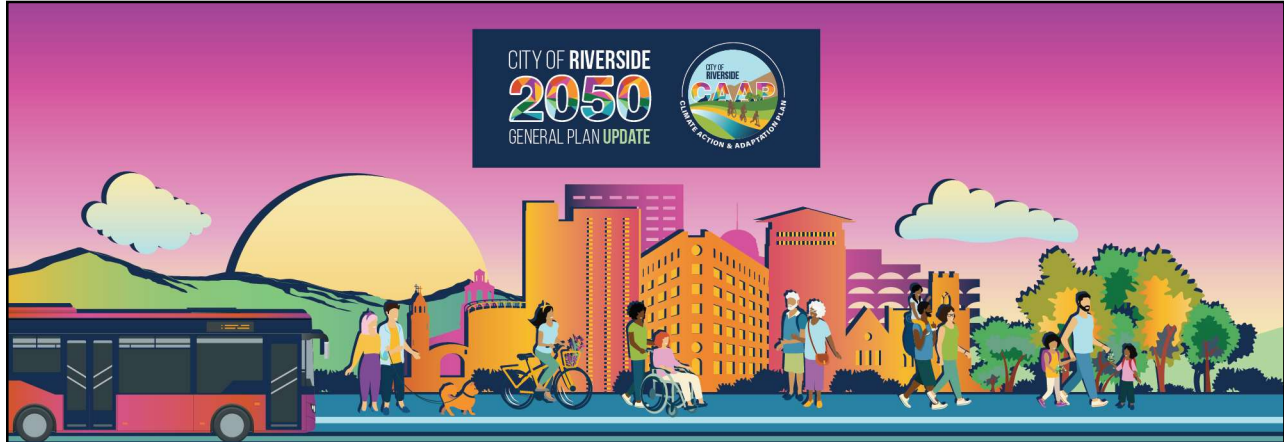


CC Date: 6-10-25

Item No.: 6

Revised

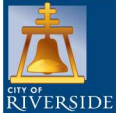


**CITY OF RIVERSIDE
2050
GENERAL PLAN UPDATE**

**CITY OF RIVERSIDE
CAAP
CLIMATE ACTION & ADAPTATION PLAN**

CITY OF RIVERSIDE GENERAL PLAN UPDATE & CLIMATE ACTION AND ADAPTATION PLAN

**City Council Update
Q2 2025
June 10, 2025**



1



**CITY OF RIVERSIDE
2050
GENERAL PLAN UPDATE**

**CITY OF RIVERSIDE
CAAP
CLIMATE ACTION & ADAPTATION PLAN**

CITY OF RIVERSIDE

**Community
Engagement:
What We've Done**

2

Stakeholder Briefing – March 27, 2025

Purpose:

Gather feedback on land use concepts, economic development, infrastructure, public space, and equity

Participation:

44 participants – Staff, GPAC members, community leaders and stakeholders

Input:

- 218 comments collected, prominent themes:
 - Neighborhood-scale revitalization
 - Access to transit
 - Youth-focused amenities
 - Integrated housing, health, education and climate resilience
 - Innovative partnerships and cross-sector collaboration

Next Steps:

- Use input to refine land use concepts and policies (Fall 2025)

Recording available: www.riverside2050.com/resources



3

Land Use Community Workshop – April 3, 2025

Purpose:

- **Neighborhood Land Use Mapping**
- **Top Discussion Topics:**
 - Housing
 - Public facilities
 - Green space
- **Participatory Budgeting Activity Top Priorities:**
 - Urban Greening
 - Waterways Protection
 - Shaded Paths & Bike Lanes

Attendance: 150+ community members, GPAC, stakeholders, and residents



Summary available: www.riverside2050.com/participate



4

Outreach Events

Summary:

- 7 Pop-Up Events – April
- 7 Movable Events
- 485+ stakeholders engaged
- 140 comment cards collected
- 116 mapping comments received
- Bilingual staff and materials at every event



5

Community Mural Project Outcomes & Core Themes

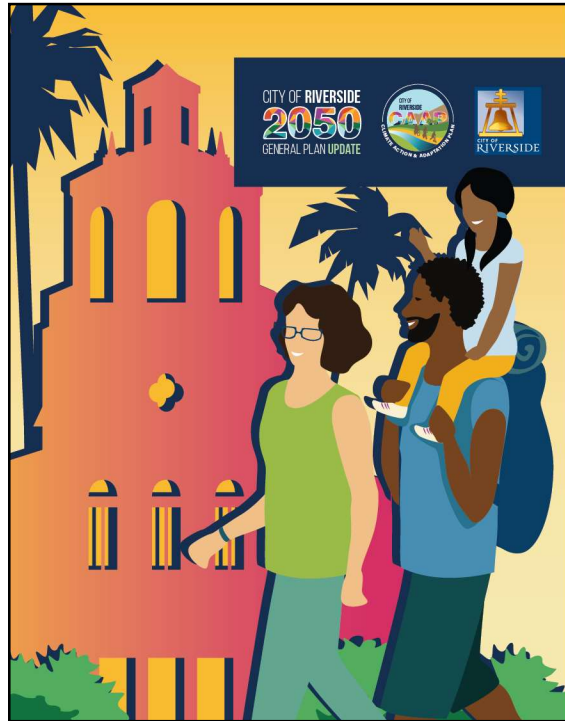
1. Sustainability & Environment
2. Built Environment & Landmarks
3. Land Use
4. Equity & Diversity
5. Arts, Culture, Health & Education
6. Recreation
7. Transportation & Mobility
8. Economic & Workforce Development
9. Housing
10. Innovation & Technology

Ward	Submissions
1	265
2	525
3	105
4	108
5	110
6	359
7	249
No Ward Provided	45
Other City	7
Grand Total	1773

**Themes listed in order based on frequency of mentions*



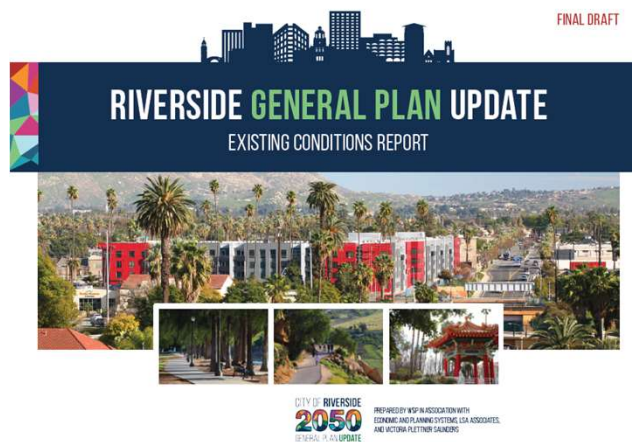
6



Draft Existing Conditions Report

7

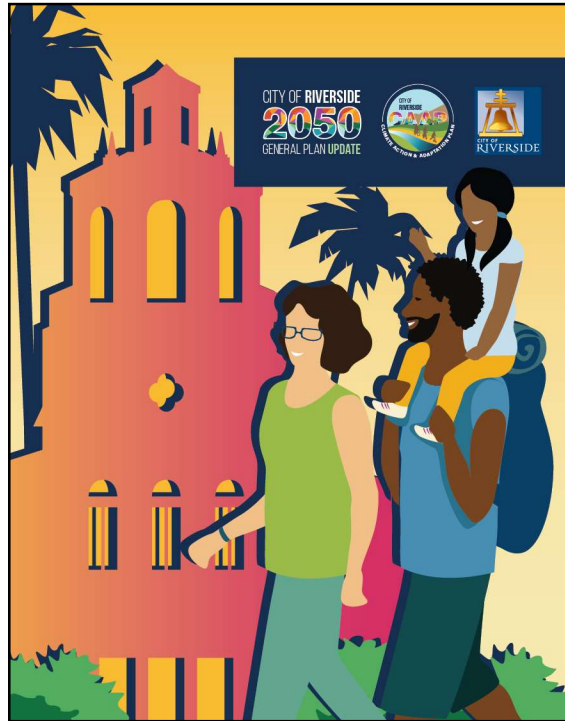
Draft Existing Conditions Report - Overview



Report available: www.riverside2050.com/resources



8



Greenhouse Gas Emissions Inventory

9

Climate Action Town Hall

CLIMATE ACTION TOWN HALL

THURSDAY, 22 MAY 2025
9:00 am to 12:00 pm
UCR Alumni & Visitors Center

Join Mayor Patricia Lock Dawson for an important climate conversation!

ABOUT THE EVENT
During the Climate Action Town Hall, participants will have the opportunity to review local climate goals, learn about international climate policy, and explore climate actions!

RSVP BELOW

PROGRAM
9:00 - Mayor's Opening
9:30 - Climate Briefing
10:30 - Break
11:15 - Climate Breakouts
11:15 to 12:00 - Report Back and Concluding Remarks

LIGHT REFRESHMENTS INCLUDED

UC RIVERSIDE
Sustainability

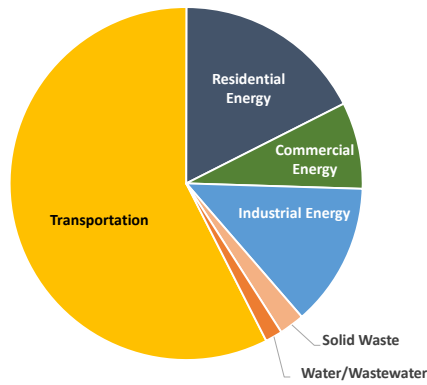
Please email sustainability@riversideca.gov for more information.

OFFICE OF SUSTAINABILITY
CITY OF RIVERSIDE



10

2023 GHG Emissions Inventory Summary



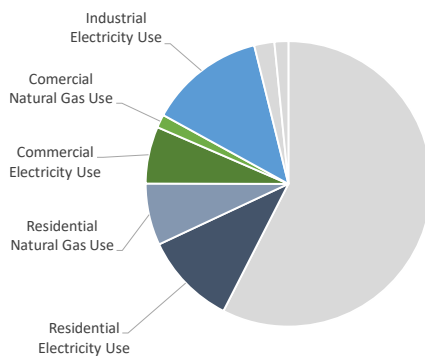
Sector	Emissions (MT CO ₂ e)	Percent of Total
Transportation	1,244,196	58%
Residential Energy	378,332	18%
Commercial Energy	171,657	8%
Industrial Energy	280,639	13%
Solid Waste	49,625	2%
Water & Wastewater	40,430	2%
Total	2,124,450	100%

MT CO₂e: metric tons of carbon dioxide equivalent



11

Energy Details



Emission Source	Data Source	MT CO ₂ e	Percent of Total Inventory
Residential Electricity	RPU	226,801	11%
Residential Natural Gas	SoCalGas	151,531	7%
Commercial Electricity	RPU	139,408	7%
Commercial Natural Gas	SoCalGas	32,249	2%
Industrial Electricity	RPU	280,639	13%

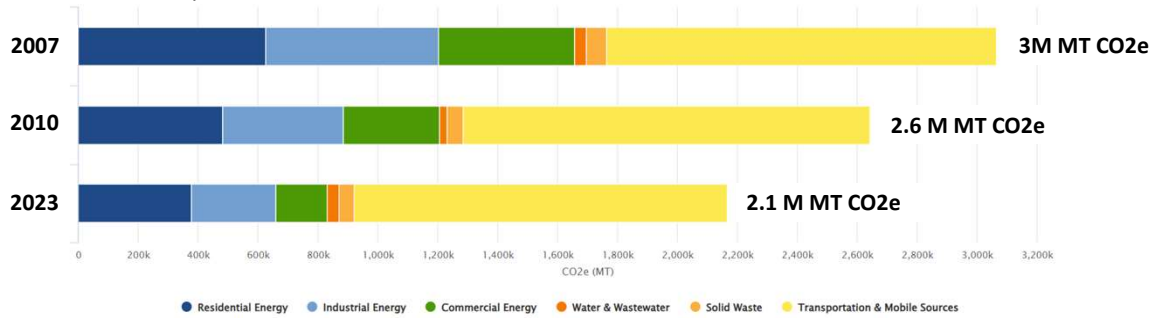
- RPU classifies customers as commercial or industrial based on energy demand
- SoCalGas does not provide industrial natural gas use data due to privacy concerns



12

GHG Emissions Trending Downward Over Time

- Energy reductions due to electrical grid incorporating more renewable sources
- Transportation is stable – Increased population is offset by stricter vehicle standards
- Note: 2023 is only inventory prepared for CAAP. 2007 and 2010 inventories were prepared with different methodologies. They are presented to demonstrate the general downward trend over time



13

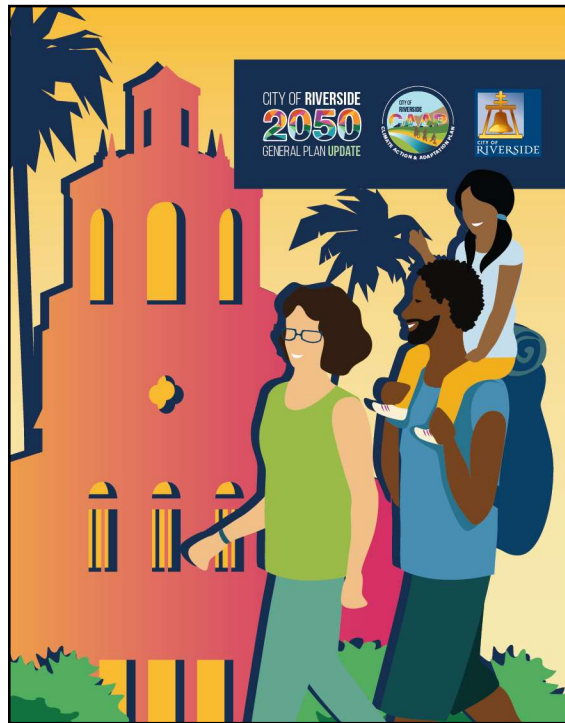
2023 GHG Emissions Inventory Summary

View the full presentation here:

qrco.de/RiversideGHG



14



Next Steps

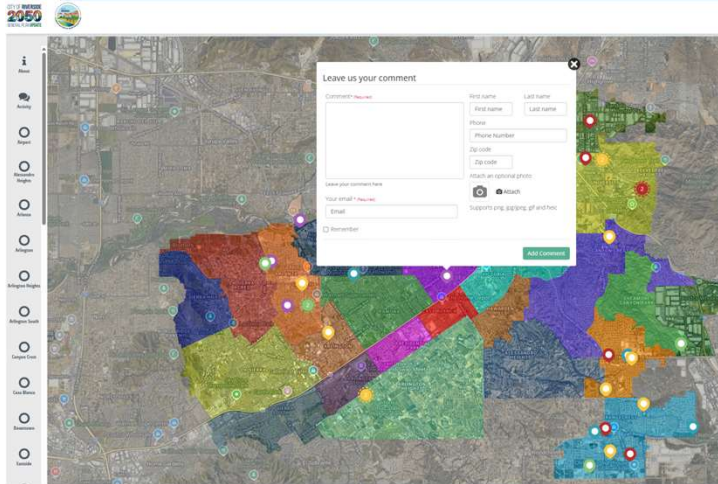
15

Upcoming Activities and Publications

- **June-July 2025**
 - Survey #2
 - Arroyo Mapping Concepts
 - Best Practices
 - Calibrating Traffic Model
 - Community Atlas and Visioning Document
- **August-November 2025**
 - Land Use Concepts (ongoing through November)
 - Fiscal Analysis
 - Public Workshop & Outreach – Land Use Concepts and Transportation

16

Interactive Land Use Mapping Activity



- Community members are encouraged to leave comments about their priorities for land use in their neighborhoods using our interactive mapping activity at www.riverside2050.com!



17

CITY OF RIVERSIDE GENERAL PLAN UPDATE & CLIMATE ACTION AND ADAPTATION PLAN

Stay Connected

Matthew Taylor
Principal Planner
Mtaylor@riversideca.gov

Fortino Morales III
Sustainability Manager
FoMorales@riversideca.gov

Outreach Team
Info@riverside2050.com
(844) 289-8614

18