



SPEED LIMIT ZONE ESTABLISHMENTS ON FIRST STREET & VICTORIA AVENUE FRONTAGE ROAD

Public Works Department

Meeting

Transportation Board: December 3, 2025

SITE & AERIAL MAPS FIRST STREET

SPEED LIMIT ZONE ESTABLISHMENT – FIRST STREET FROM ORANGE ST. TO MAIN ST.

Proposed establishment of 25 MPH speed limit zone

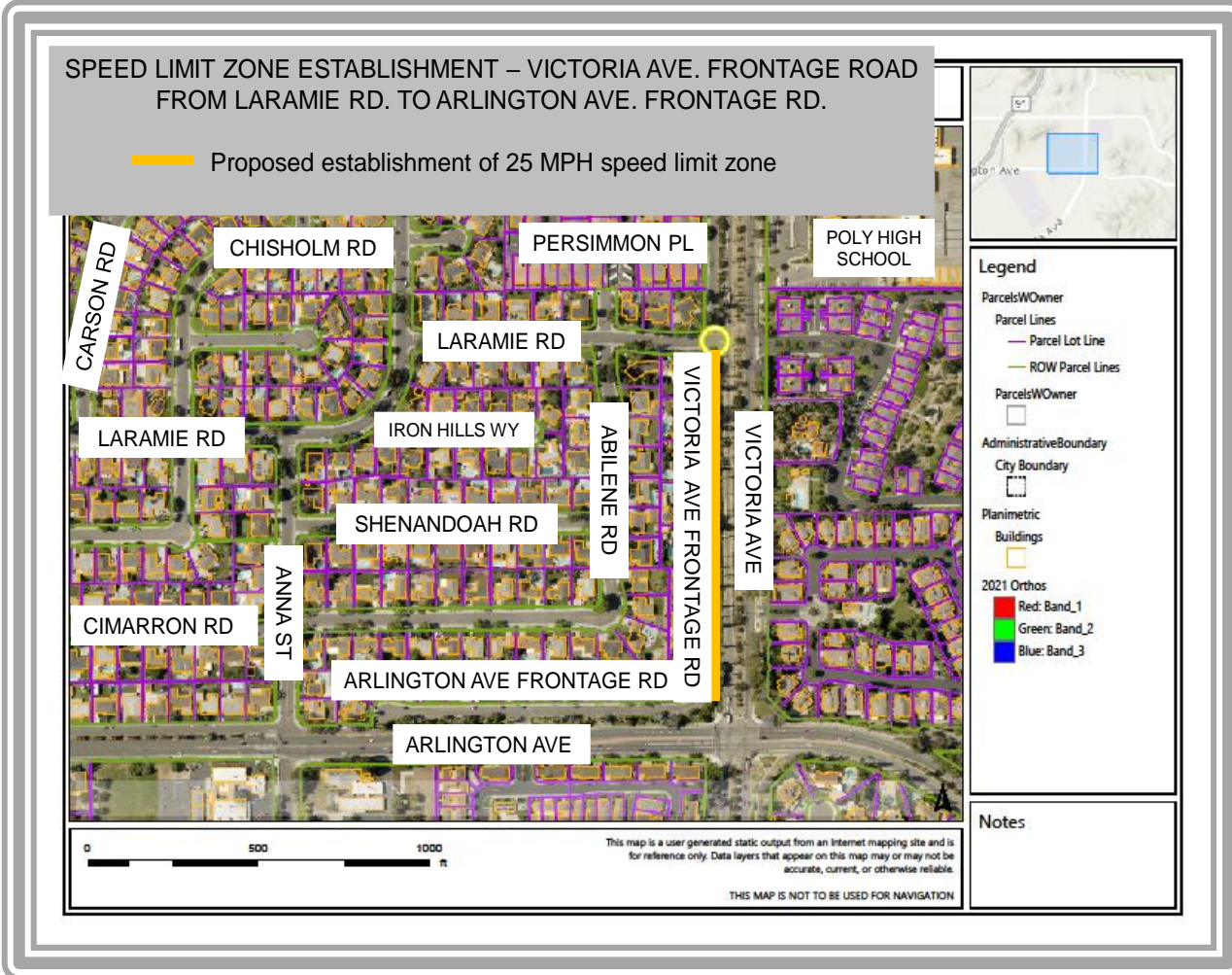
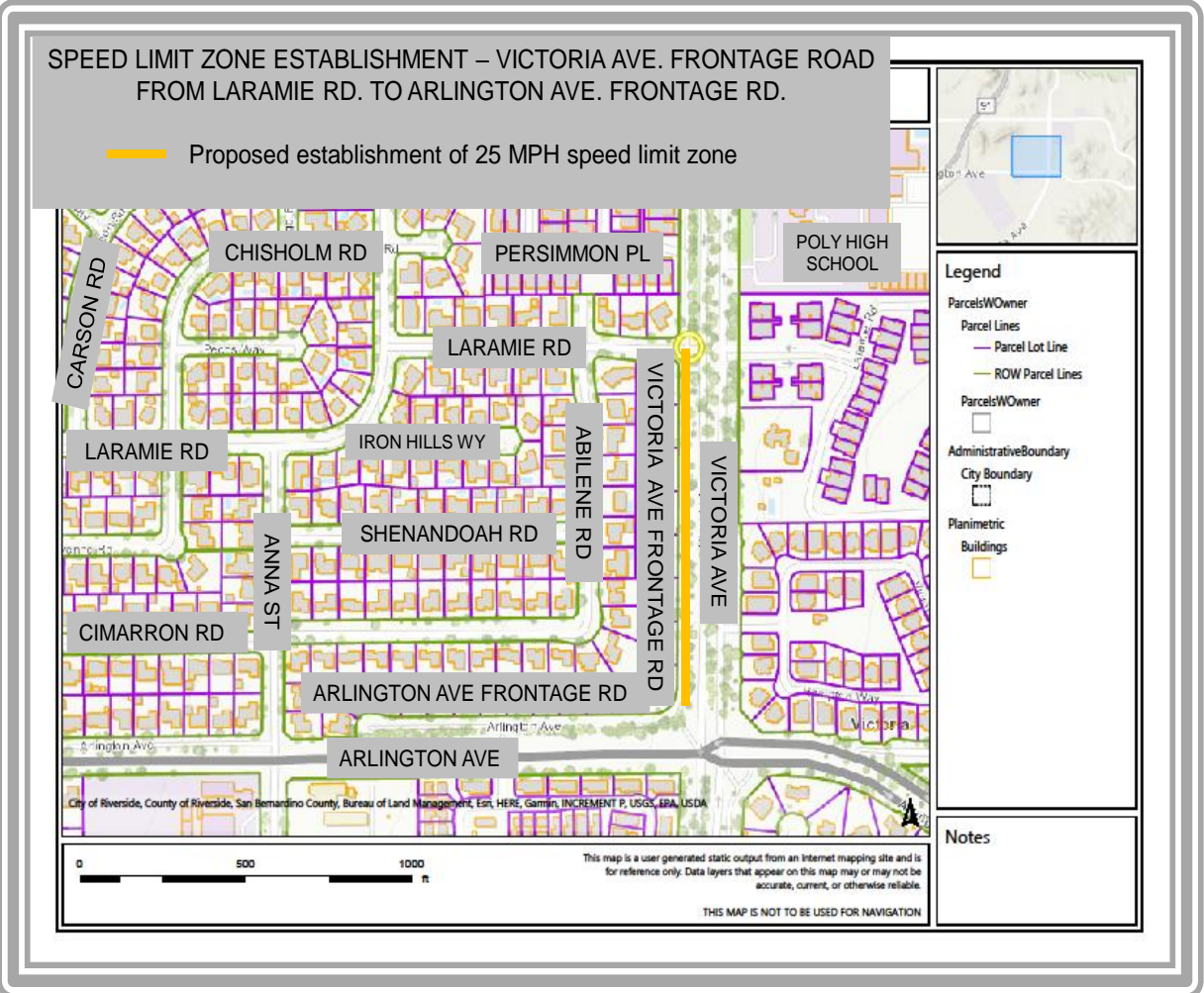


SPEED LIMIT ZONE ESTABLISHMENT – FIRST STREET FROM ORANGE ST. TO MAIN ST.

Proposed establishment of 25 MPH speed limit zone



SITE & AERIAL MAPS VICTORIA AVE FRONTAGE RD



BACKGROUND

- Public Works performs speed surveys to establish appropriate speed limits on City streets which do not meet the California Vehicle Code (CVC) prima facie criteria.
- These surveys are performed in accordance with the CVC and CA Manual of Uniform Traffic Control Devices (MUTCD) and enable both establishment and enforcement of the posted speed limit on City streets.

DISCUSSION

First Street:

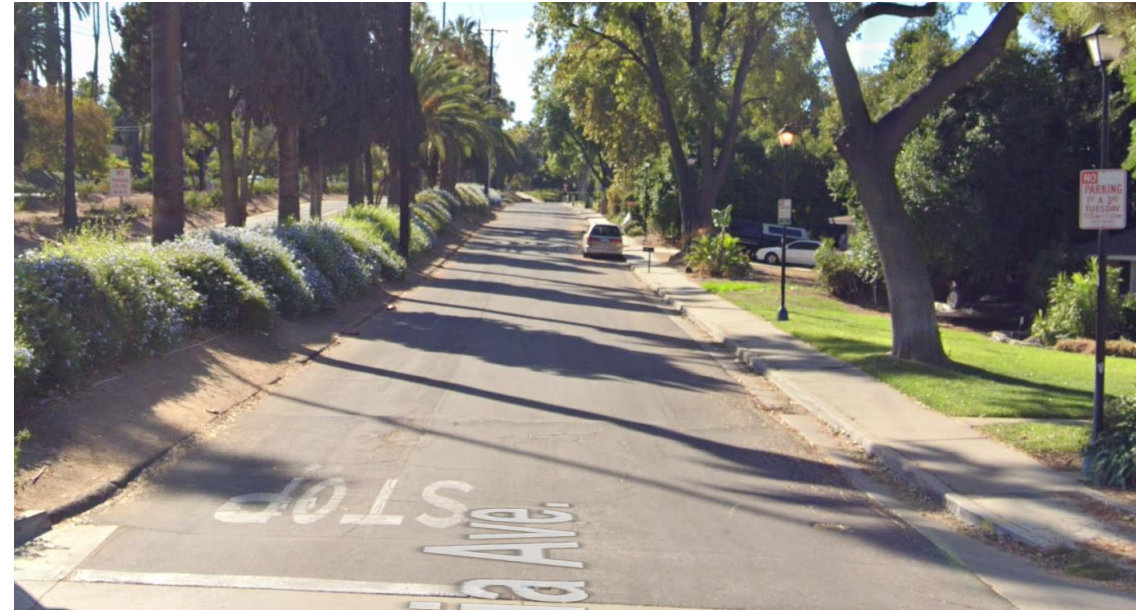
1. First Street from Orange St. to Main St. does not meet CVC 25 MPH prima facie criteria. A Traffic and Engineering Survey concluded the 85th percentile speed to be 27 MPH; and
2. Establishment of a 25 MPH speed limit is recommended;



DISCUSSION (CONTINUED)

Victoria Avenue Frontage Road:

1. Victoria Avenue Frontage Road from Laramie Rd. to Arlington Ave. does not meet CVC 25 MPH prima facie criteria. A Traffic and Engineering Survey concluded the 85th percentile speed to be 26 MPH; and
2. Establishment of a 25 MPH speed limit is recommended;



RECOMMENDATION

That the Transportation Board recommend that the City Council approve:

1. Establishment of a 25 MPH speed limit zone on First Street from Orange Street to Main Street; and
2. Establishment of a 25 MPH speed limit zone on Victoria Avenue Frontage Road from Laramie Rd. to Arlington Ave. Frontage Road.