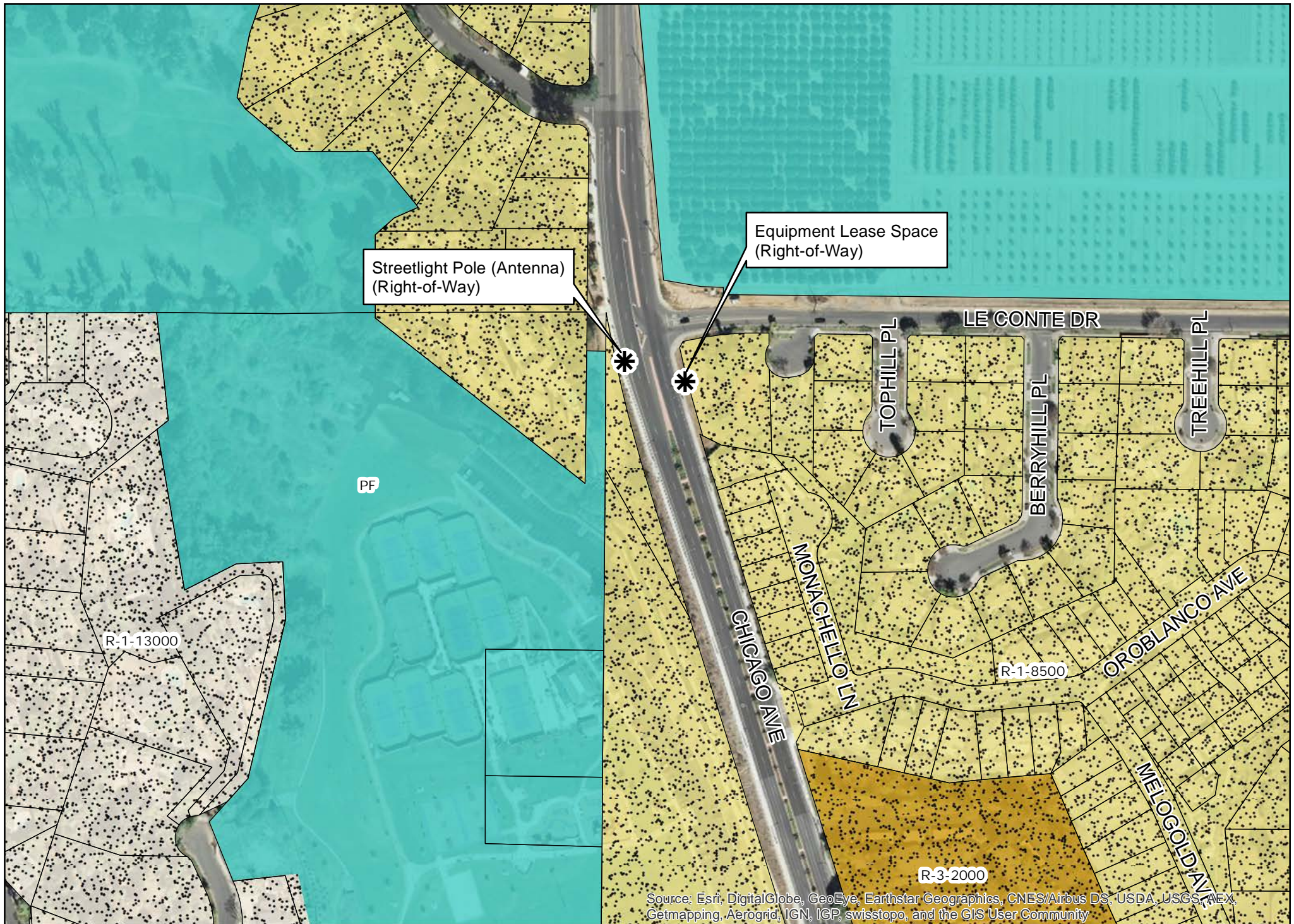




Exhibit 3 - P15-0947, Aerial Photo/Location



Source: Esri, DigitalGlobe, GeoEye, Earthstar Geographics, CNES/Airbus DS, USDA, USGS, AeroGRID, IGN, IGP, swisstopo, and the GIS User Community

Exhibit 4 - P15-0947, Zoning Map



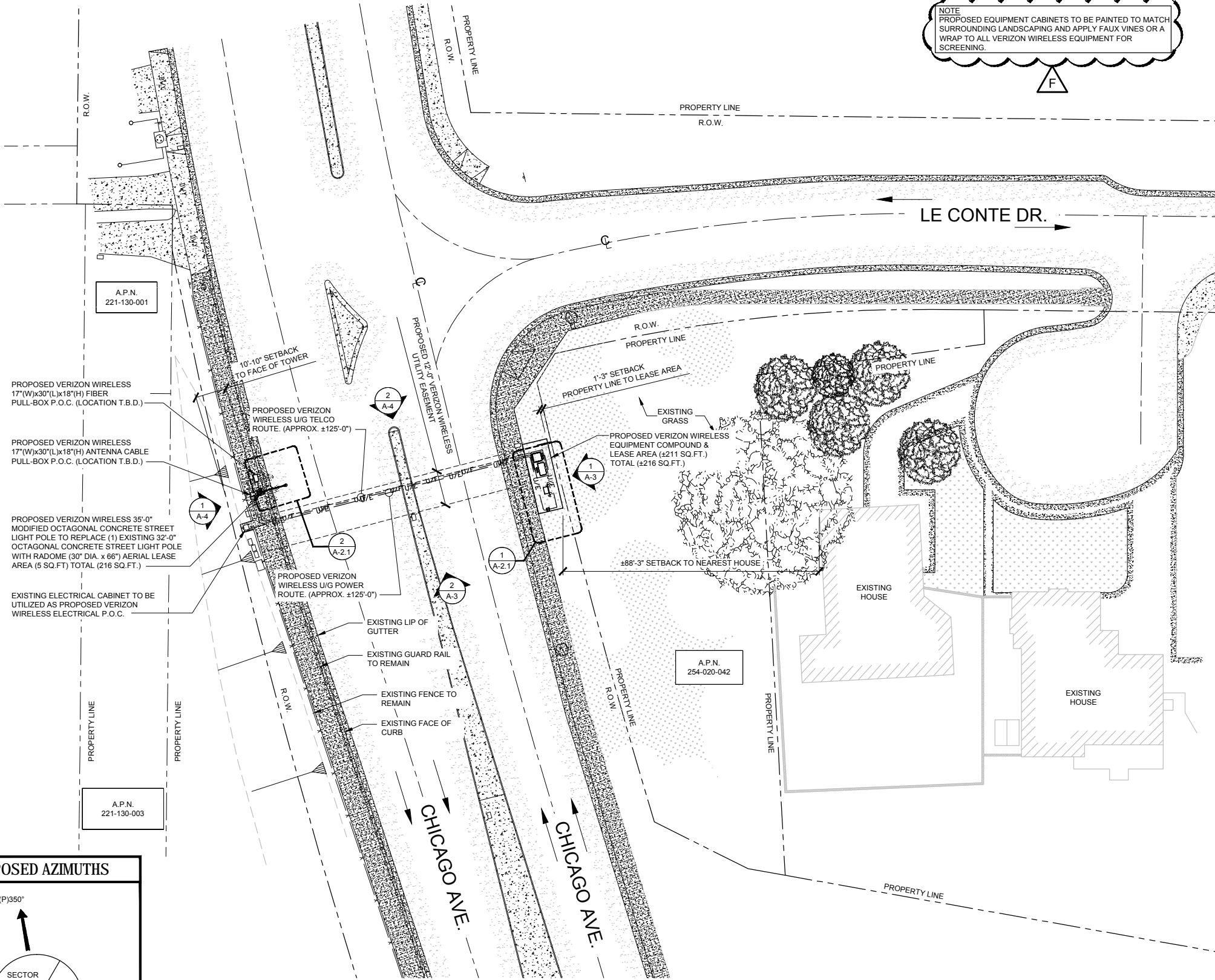
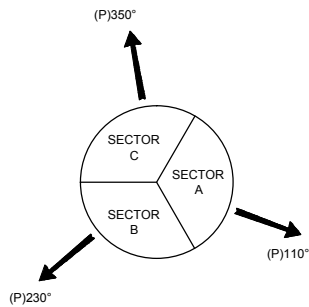
ABBREVIATIONS:			
A/C	AIR CONDITIONING	LBS	POUNDS
AGL	ABOVE GRADE LEVEL		
APPROX	APPROXIMATELY	MAX	MAXIMUM
		MECH	MECHANICAL
BLDG	BUILDING	MTL	METAL
BLK	BLOCKING	MFR	MANUFACTURER
		MGR	MANAGER
CLG	CEILING	MIN	MINIMUM
CLR	CLEAR	MISC	MISCELLANEOUS
CONC	CONCRETE		
CONST	CONSTRUCTION	NA	NOT APPLICABLE
CONT	CONTINUOUS	NIC	NOT IN CONTRACT
		NTS	NOT TO SCALE
DBL	DOUBLE		
DIA	DIAMETER	OC	ON CENTER
DIAG	DIAGONAL	OD	OUTSIDE DIAMETER
DN	DOWN	PLYWD	PLYWOOD
DET	DETAIL	PROJ	PROJECT
DWG	DRAWING	PROP	PROPERTY
		PT	PRESSURE TREATED
EA	EACH		
ELEV	ELEVATION	REQ	REQUIRED
ELEC	ELECTRICAL	RM	ROOM
EQ	EQUAL	RO	ROUGH OPENING
EQUIP	EQUIPMENT	RRH	RADIO REMOTE HEAD
EXT	EXTERIOR		
FIN	FINISH	SHT	SHEET
FLUOR	FLUORESCENT	SHM	SIMILAR
FLR	FLOOR	SPEC	SPECIFICATION
FT	FOOT	SF	SQUARE FOOT
		SS	STAINLESS STEEL
		STL	STEEL
GA	GAUGE	STRUCT	STRUCTURAL
GALV	GALVANIZED	STD	STANDARD
GC	GENERAL CONTRACTOR	SUSP	SUSPENDED
GRND	GROUND		
GYP BD	GYPSPUM WALL BOARD	THRU	THROUGH
		TMA	TOWER MOUNT
HORZ	HORIZONTAL		
HR	HOUR	AMP	AMPLIFIER
HT	HEIGHT	TNND	TINNED
HVAC	HEATING	TYP	TYPICAL
	VENTILATION	UNO	UNLESS NOTED OTHERWISE
	AIR CONDITIONING		
ID	INSIDE DIAMETER	VERT	VERTICAL
IN	INCH	VIF	VERIFY IN FIELD
INFO	INFORMATION		
INSUL	INSULATION		
INT	INTERIOR	W/	WITH
IBC	INTERNATIONAL BUILDING CODE	W/O	WITHOUT
		WP	WATER PROOF

LEGEND	
---	SUBJECT BOUNDARY LINE
---	RIGHT-OF-WAY CENTERLINE
---	RIGHT-OF-WAY LINE
---	ADJACENT BOUNDARY LINE
— O/H — O/H — O/H — O/H —	OVERHEAD LINE
— U/E — U/E — U/E — U/E —	UNDERGROUND ELECTRICAL LINE
— U/T — U/T — U/T — U/T —	UNDERGROUND TELCO LINE
— G — G — G — G —	BURIED GAS LINE
— DHT — DHT — DHT — DHT —	OVERHEAD TELEPHONE LINE
— T — T — T — T —	BURIED TELEPHONE LINE
— W — W — W — W —	BURIED WATER LINE
— SS — SS — SS — SS —	BURIED SANITARY SEWER
— SD — SD — SD — SD —	BURIED STORM DRAIN
— X — X — X — X — X — X —	CHAIN LINK FENCE
— □ — □ — □ — □ — □ — □ —	WROUGHT IRON FENCE

△	TRANSFORMER	⊙	FIRE HYDRANT
⊗	LIGHT STANDARD	⊗	GATE VALVE
P	POWER VAULT	⊗	WATER METER
⊗	UTILITY BOX	□	CATCH BASIN, TYPE I
⊙	UTILITY POLE	⊙	CATCH BASIN, TYPE II

NOTE: ALL WORK WITHIN PUBLIC ROW WILL BE UNDER SEPARATE PERMIT.
NOTE: CONTRACTOR TO INSTALL A 17"x30" PULL BOX FOR POWER & TELCO AFTER EVERY 300' OR AFTER EVERY TWO 90° BENDS.
NOTE: REFERENCE SURVEY BY CORE DEVELOPMENT SERVICES DATE 11-24-14, FOR ALL PROPERTY LINES AND EXISTING EASEMENT INFORMATION.
NOTE: W-T'S SCOPE OF WORK DOES NOT INCLUDE A STRUCTURAL EVALUATION OF THIS TOWER OR STRUCTURE. NEW ANTENNAS SHOWN ON THIS PLAN HAVE NOT BEEN EVALUATED TO VERIFY THE TOWER OR STRUCTURE HAS THE CAPACITY TO ADEQUATELY SUPPORT THESE ANTENNAS. PRIOR TO ANY ANTENNA INSTALLATION, A STRUCTURAL EVALUATION OF THE TOWER OR STRUCTURE, INCLUDING ALL ANTENNA MOUNTING SYSTEMS AND HARDWARE, SHALL BE PERFORMED.

#### PROPOSED AZIMUTHS



NOTE  
PROPOSED EQUIPMENT CABINETS TO BE PAINTED TO MATCH  
SURROUNDING LANDSCAPING AND APPLY FAUX VINES OR A  
WRAP TO ALL VERIZON WIRELESS EQUIPMENT FOR  
SCREENING.

F

#### ISSUE STATUS

REV.	DATE	DESCRIPTION	BY
A	02/26/15	90% ZONING	NEC
B	04/07/15	100% ZONING	NEC
C	10/09/15	REVISED 100% ZD	NEC
D	10/16/15	REVISED 100% ZD	NEC
E	01/28/16	CITY COMMENTS	JNC
F	04/21/16	REVISED 100% ZD	CLG

**W-T**

W-T COMMUNICATION  
DESIGN GROUP, L.L.C.

WIRELESS INFRASTRUCTURE  
8560 S. Eastern Ave. Suite 220  
Las Vegas, NV 89123  
PH: (702) 998-1000 FAX: (702) 998-1010  
www.wtengineering.com  
COPYRIGHT © 2016 W-T COMMUNICATION DESIGN GROUP, L.L.C.  
PROJECT #: T1600032

#### PROPRIETARY INFORMATION

THE INFORMATION CONTAINED IN THIS SET OF  
DRAWINGS IS PROPRIETARY & CONFIDENTIAL TO  
VERIZON WIRELESS  
ANY USE OR DISCLOSURE OTHER THAN AS IT RELATES  
TO VERIZON WIRELESS IS STRICTLY PROHIBITED

**verizon**

15505 SAND CANYON AVENUE, D1  
IRVINE, CA 92618

NOT TO BE USED  
FOR CONSTRUCTION

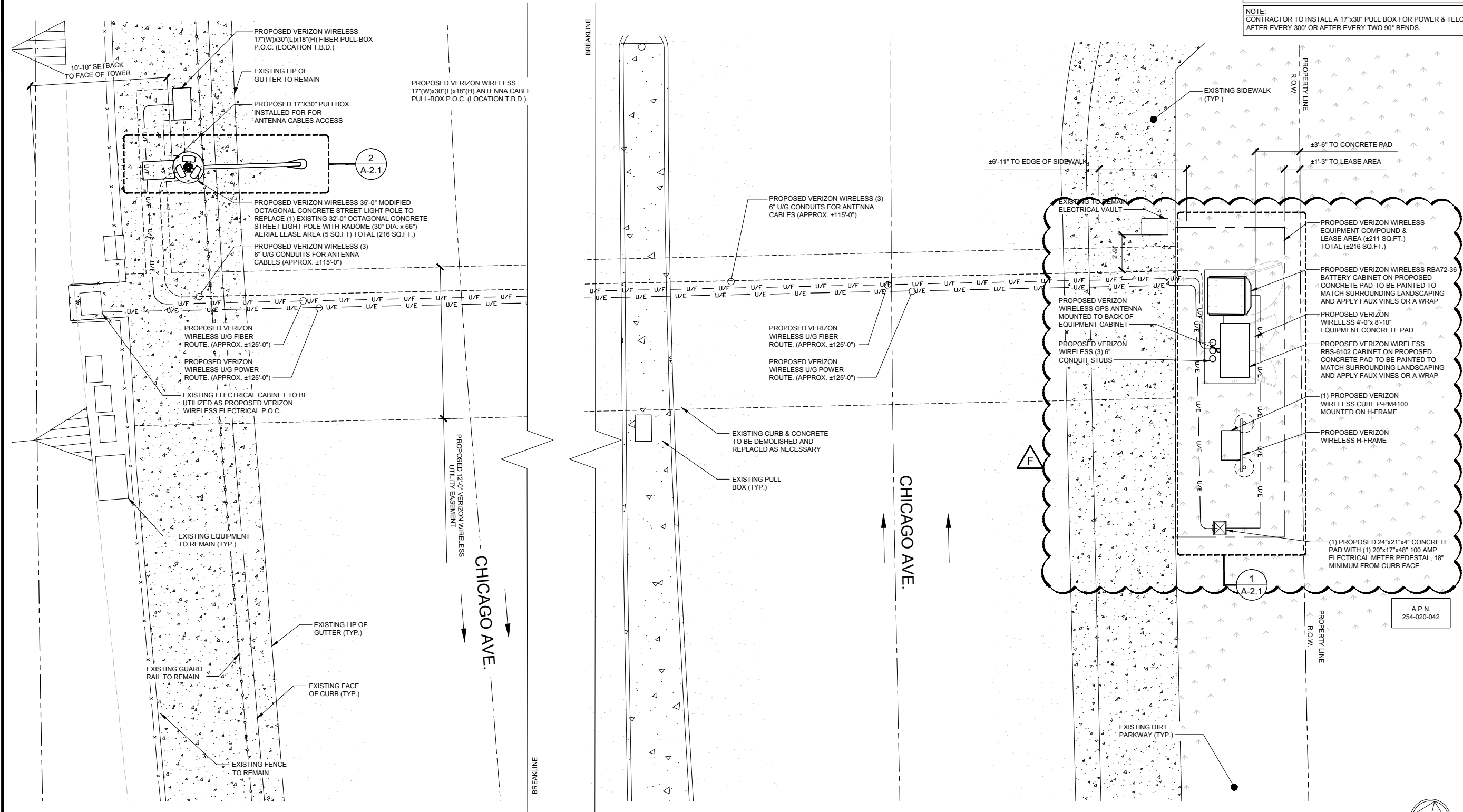
**DULCIA**

CHICAGO AVE. 75' S/O LE  
CORTE DR. - ROW  
RIVERSIDE, CA 92507

SHEET TITLE:  
OVERALL  
SITE PLAN

**A-1**

NOTE: THE ORIGINAL SIZE OF THIS PLAN IS 11' X 24'. THIS PLAN WILL BE IN SCALE UNLESS OTHERWISE NOTED.



NOTE:  
PROPOSED EQUIPMENT CABINETS TO BE PAINTED TO MATCH SURROUNDING LANDSCAPING AND APPLY FAUX VINES OR A WRAP TO ALL VERIZON WIRELESS EQUIPMENT FOR SCREENING.

NOTE:  
W-T'S SCOPE OF WORK DOES NOT INCLUDE A STRUCTURAL EVALUATION OF THIS TOWER OR STRUCTURE. NEW ANTENNAS SHOWN ON THIS PLAN HAVE NOT BEEN EVALUATED TO VERIFY THE TOWER OR STRUCTURE HAS THE CAPACITY TO ADEQUATELY SUPPORT THESE ANTENNAS. PRIOR TO ANY ANTENNA INSTALLATION, A STRUCTURAL EVALUATION OF THE TOWER OR STRUCTURE, INCLUDING ALL ANTENNA MOUNTING SYSTEMS AND HARDWARE, SHALL BE PERFORMED.

NOTE:  
REFERENCE SURVEY BY UTILITY DESIGN SERVICES, INC. ON 12/5/14. FOR ALL PROPERTY LINES AND EXISTING EASEMENT INFORMATION.

NOTE:  
ALL WORK WITHIN PUBLIC ROW WILL BE UNDER SEPARATE PERMIT.

NOTE:  
CONTRACTOR TO INSTALL A 17"x30" PULL BOX FOR POWER & TELCO AFTER EVERY 300' OR AFTER EVERY TWO 90° BENDS.

## ISSUE STATUS

REV.	DATE	DESCRIPTION	BY
A	02/26/15	90% ZONING	NEC
B	04/07/15	100% ZONING	NEC
C	10/09/15	REVISED 100% ZD	NEC
D	10/16/15	REVISED 100% ZD	NEC
E	01/28/16	CITY COMMENTS	JNC
F	04/21/16	REVISED 100% ZD	CLG

**W-T**

W-T COMMUNICATION  
DESIGN GROUP, LLC.

WIRELESS INFRASTRUCTURE  
8560 S. Eastern Ave. Suite 220  
Las Vegas, NV 89123  
PH: (702) 998-1000 FAX: (702) 998-1010  
www.wtengineering.com

COPYRIGHT © 2016 W-T COMMUNICATION DESIGN GROUP, LLC.  
PROJECT #: T1600032

## PROPRIETARY INFORMATION

THE INFORMATION CONTAINED IN THIS SET OF DRAWINGS IS PROPRIETARY & CONFIDENTIAL TO VERIZON WIRELESS

ANY USE OR DISCLOSURE OTHER THAN AS IT RELATES TO VERIZON WIRELESS IS STRICTLY PROHIBITED

**verizon**

15505 SAND CANYON AVENUE, D1  
IRVINE, CA 92618

NOT TO BE USED  
FOR CONSTRUCTION

**DULCIA**

CHICAGO AVE. 75' S/O LE  
CORTE DR. - ROW  
RIVERSIDE, CA 92507

SHEET TITLE:  
ENLARGED  
SITE PLAN

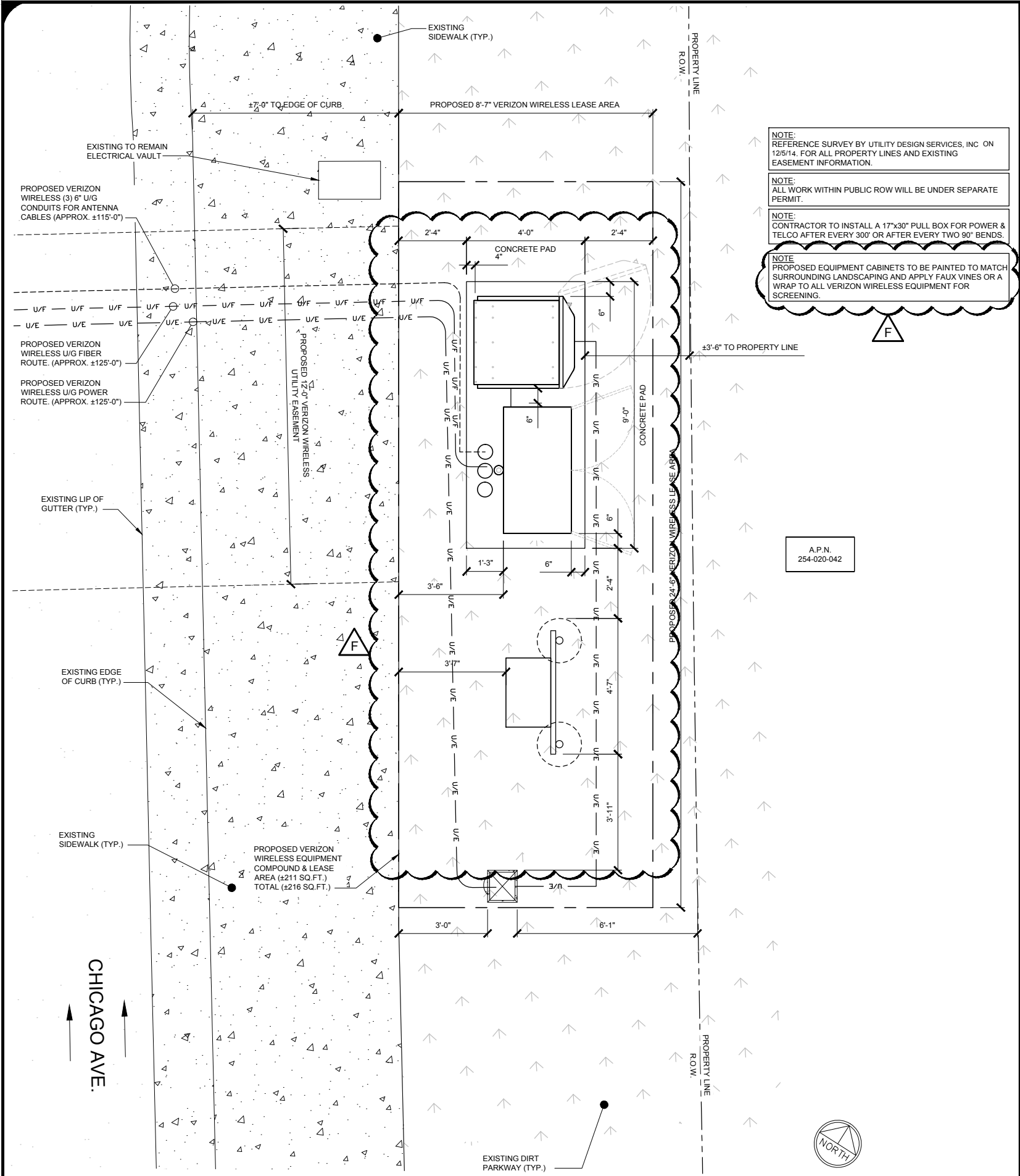
**A-2**

ENLARGED SITE PLAN

SCALE: 1/4"=1'-0"

1

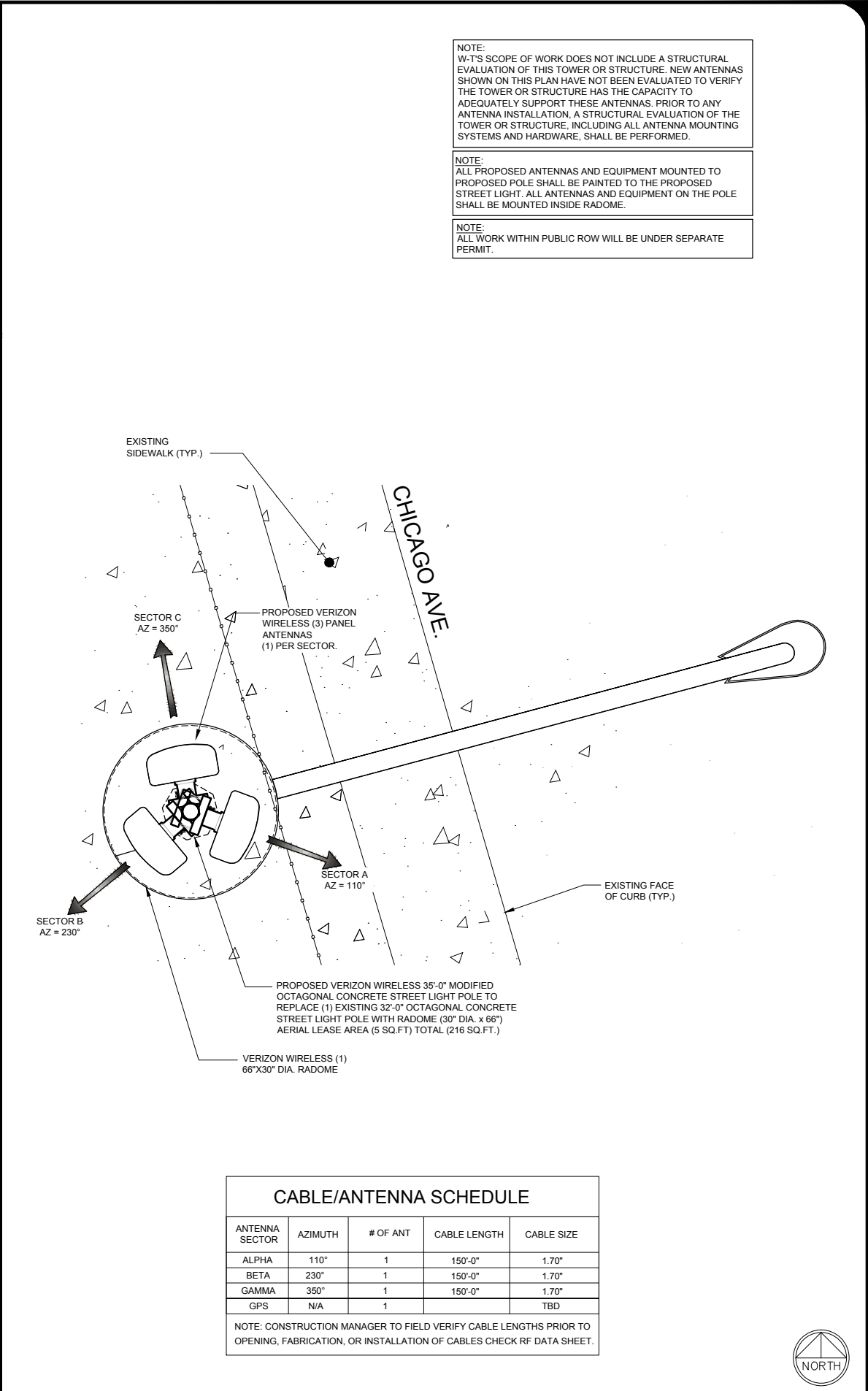
NOTE: THE ORIGINAL SIZE OF THIS PLAN IS 36" X 24". IF 36" X 24" IS NOT SHOWN, THE SCALE WILL BE 1/4"=1'-0" UNLESS OTHERWISE NOTED.



ENLARGED EQUIPMENT PLAN

SCALE: 1/2"=1'-0"

1



ENLARGED ANTENNA PLAN & CABLE/ANTENNA SCHEDULE

SCALE: 1/4"=1'-0"

2

## ISSUE STATUS

REV.	DATE	DESCRIPTION	BY
A	02/26/15	90% ZONING	NEC
B	04/07/15	100% ZONING	NEC
C	10/09/15	REVISED 100% ZD	NEC
D	10/16/15	REVISED 100% ZD	NEC
E	01/28/16	CITY COMMENTS	JNC
F	04/21/16	REVISED 100% ZD	CLG

# WT

W-T COMMUNICATION  
DESIGN GROUP, L.L.C.

WIRELESS INFRASTRUCTURE  
8560 S. Eastern Ave. Suite 220  
Las Vegas, NV 89123  
PH: (702) 998-1000 FAX: (702) 998-1010  
www.wtengineering.com  
COPYRIGHT © 2016 W-T COMMUNICATION DESIGN GROUP, L.L.C.  
PROJECT #: T1600032

## PROPRIETARY INFORMATION

THE INFORMATION CONTAINED IN THIS SET OF  
DRAWINGS IS PROPRIETARY & CONFIDENTIAL TO  
VERIZON WIRELESS

ANY USE OR DISCLOSURE OTHER THAN AS IT RELATES  
TO VERIZON WIRELESS IS STRICTLY PROHIBITED

# verizon

15505 SAND CANYON AVENUE, D1  
IRVINE, CA 92618

NOT TO BE USED  
FOR CONSTRUCTION

## DULCIA

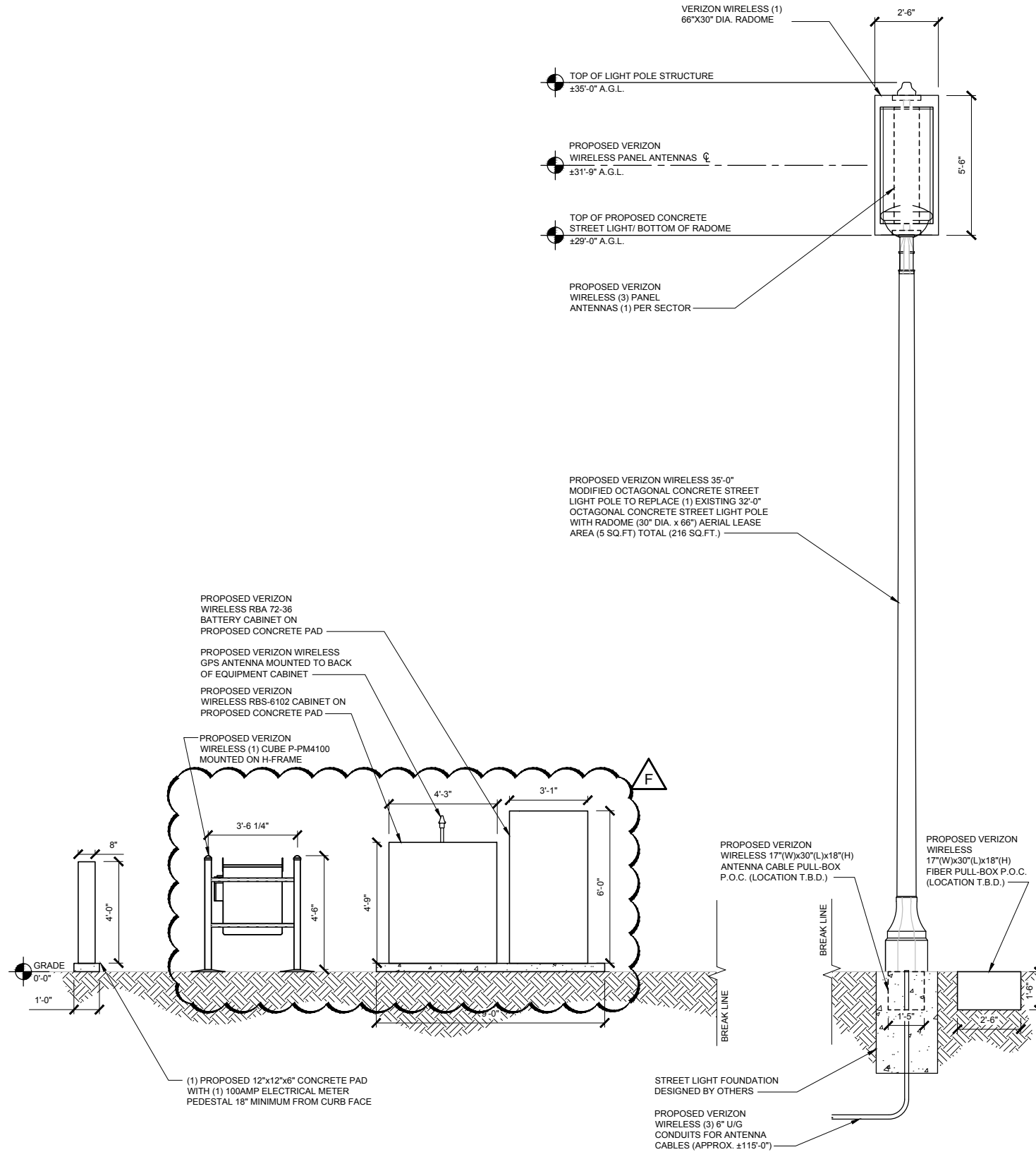
CHICAGO AVE. 75' S/O LE  
CORTE DR. - ROW  
RIVERSIDE, CA 92507

SHEET TITLE:

ENLARGED EQUIPMENT  
& ANTENNA PLAN

# A-2.1

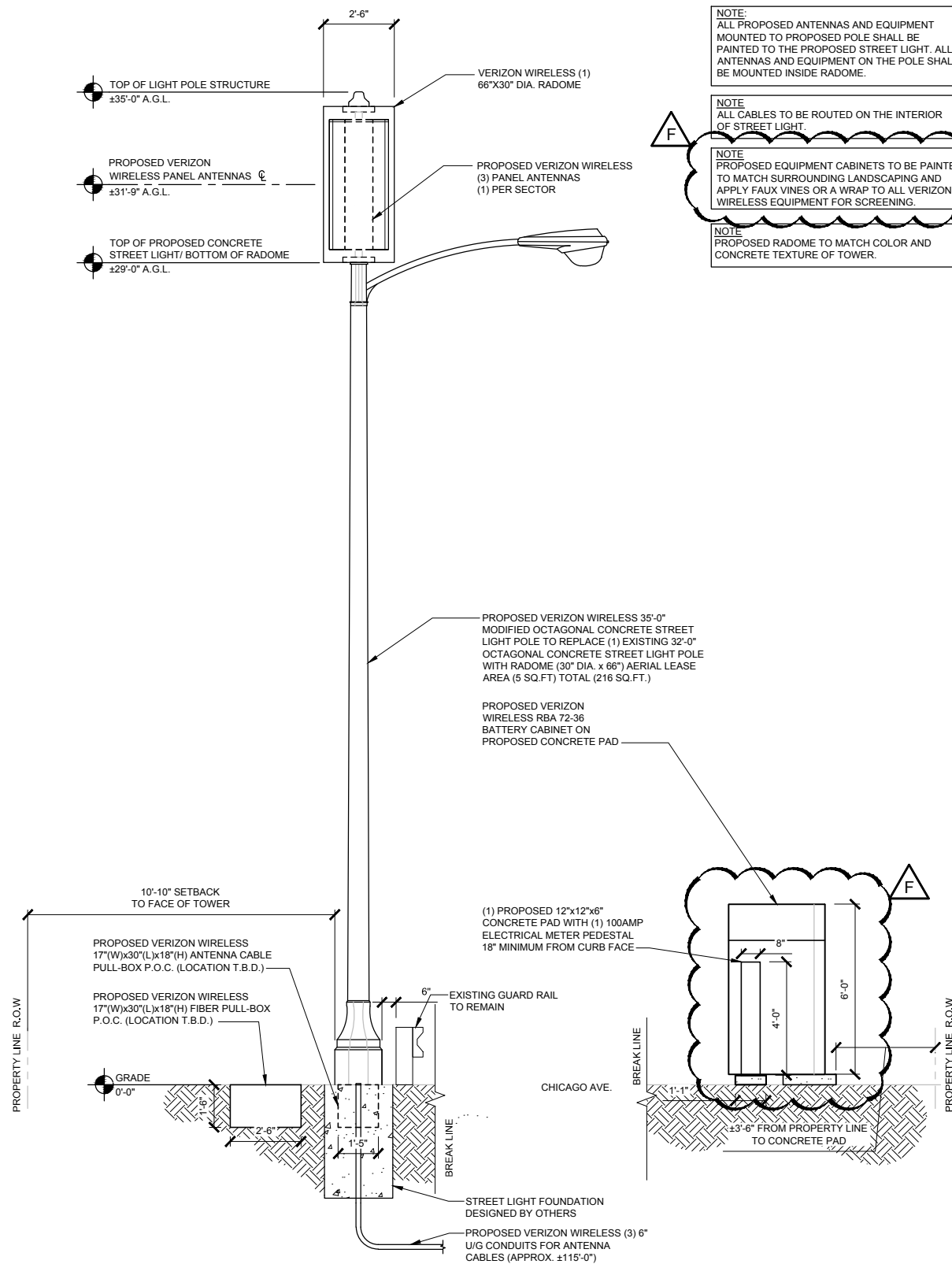
NOTE: THE ORIGINAL SIZE OF THIS DRAWING IS 36" X 24". IF A 36" X 24" COPY IS USED, THE SCALE WILL BE 1/8"=1'-0". UNLESS OTHERWISE NOTED.



PROPOSED EAST ELEVATION (SECTOR A)

SCALE: 3/8"=1'-0"

1



PROPOSED SOUTH ELEVATION (SECTORS A&B)

SCALE: 3/8"=1'

2

## ISSUE STATUS

REV.	DATE	DESCRIPTION	BY
A	02/26/15	90% ZONING	NEC
B	04/07/15	100% ZONING	NEC
C	10/09/15	REVISED 100% ZD	NEC
D	10/16/15	REVISED 100% ZD	NEC
E	01/28/16	CITY COMMENTS	JNC
F	04/21/16	REVISED 100% ZD	CLG

# W-T

W-T COMMUNICATION  
DESIGN GROUP, LLC.

WIRELESS INFRASTRUCTURE  
8560 S. Eastern Ave. Suite 220  
Las Vegas, NV 89123  
PH: (702) 998-1000 FAX: (702) 998-1010  
www.wtengineering.com  
COPYRIGHT © 2016 W-T COMMUNICATION DESIGN GROUP, LLC.  
PROJECT #: T1600032

## PROPRIETARY INFORMATION

THE INFORMATION CONTAINED IN THIS SET OF  
DRAWINGS IS PROPRIETARY & CONFIDENTIAL TO  
VERIZON WIRELESS

ANY USE OR DISCLOSURE OTHER THAN AS IT RELATES  
TO VERIZON WIRELESS IS STRICTLY PROHIBITED

# verizon

15505 SAND CANYON AVENUE, D1  
IRVINE, CA 92618

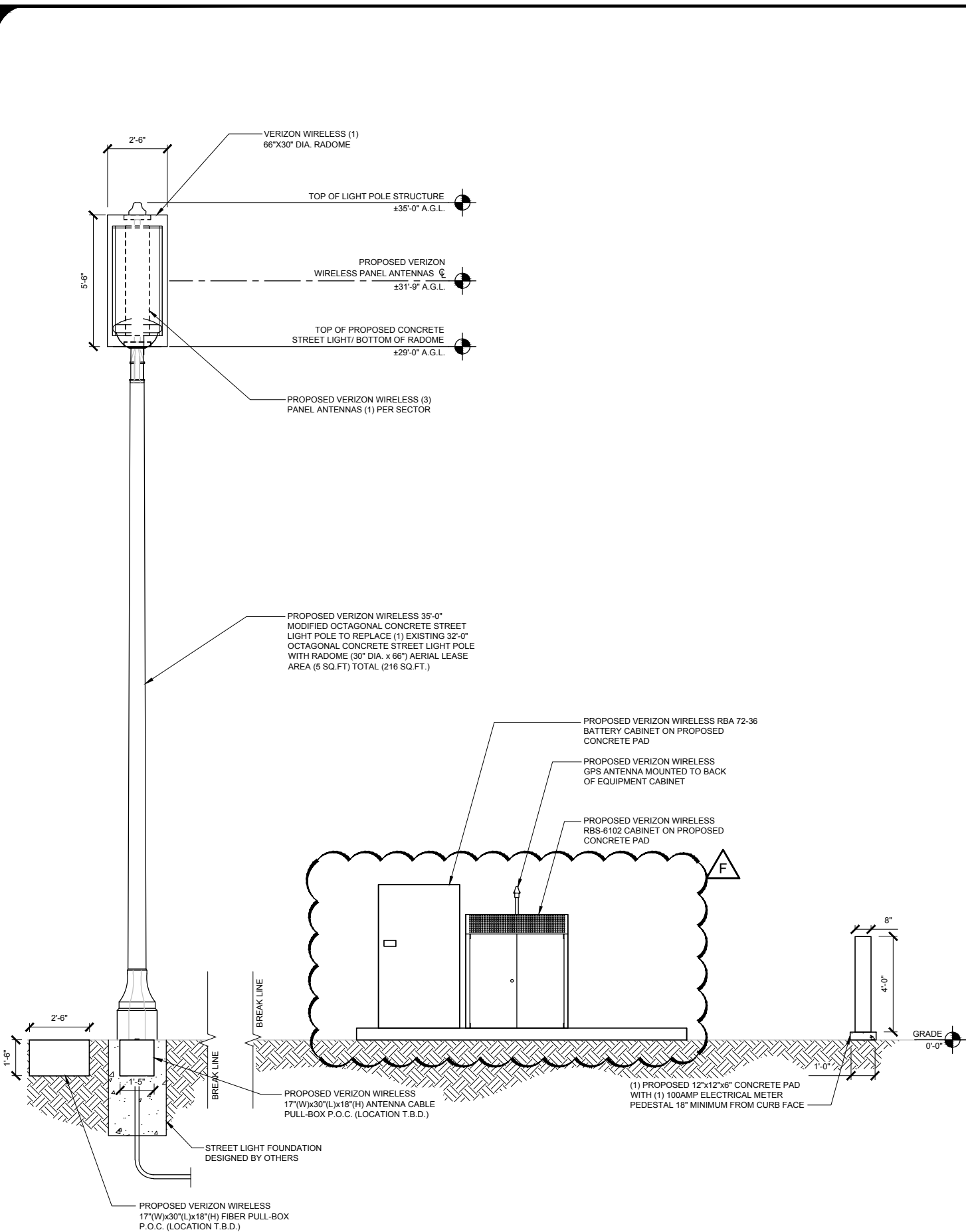
NOT TO BE USED  
FOR CONSTRUCTION

## DULCIA

CHICAGO AVE. 75' S/O LE  
CORTE DR. - ROW  
RIVERSIDE, CA 92507

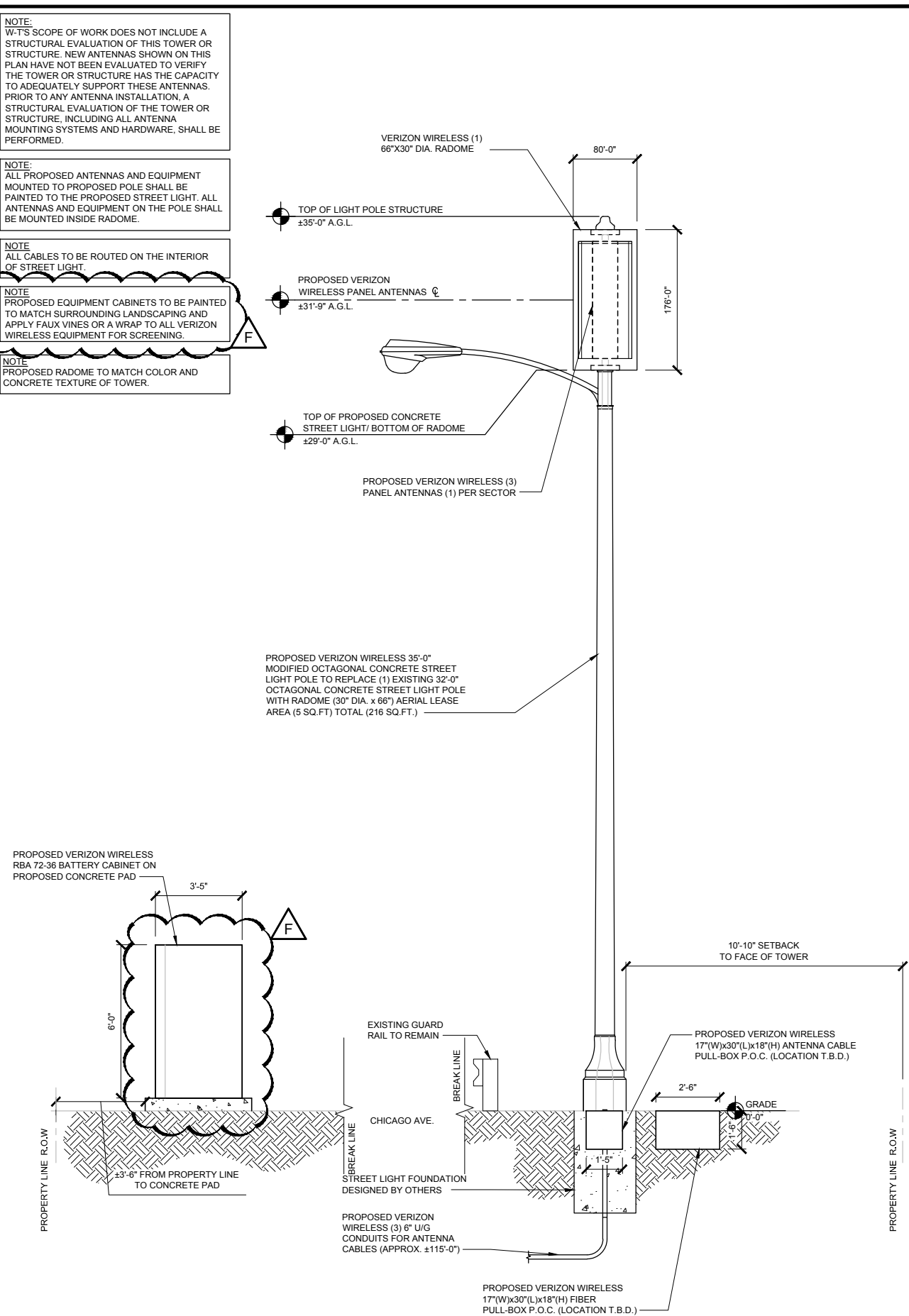
SHEET TITLE:  
PROPOSED  
ELEVATIONS

# A-3



### PROPOSED WEST ELEVATION (SECTOR C)

SCALE: 3/8"=1'-0"



### PROPOSED NORTH ELEVATION (SECTOR B)

SCALE: 3/8"=1'-0"

ISSUE STATUS			
REV.	DATE	DESCRIPTION	BY
A	02/26/15	90% ZONING	NEC
B	04/07/15	100% ZONING	NEC
C	10/09/15	REVISED 100% ZD	NEC
D	10/16/15	REVISED 100% ZD	NEC
E	01/28/16	CITY COMMENTS	JNC
F	04/21/16	REVISED 100% ZD	CLG

**W-T**

**W-T COMMUNICATION  
DESIGN GROUP, LLC.**

---

WIRELESS INFRASTRUCTURE  
8560 S. Eastern Ave. Suite 220  
Las Vegas, NV 89123  
P: (702) 998-1000 FAX: (702) 998-1010  
[www.wtengineering.com](http://www.wtengineering.com)

---

© 2016 W-T COMMUNICATION DESIGN GROUP, LLC  
PROJECT #: T1600032

PROPRIETARY INFORMATION

THE INFORMATION CONTAINED IN THIS SET OF  
DRAWINGS IS PROPRIETARY & CONFIDENTIAL TO  
VERIZON WIRELESS

ANY USE OR DISCLOSURE OTHER THAN AS IT RELATES  
TO VERIZON WIRELESS IS STRICTLY PROHIBITED



15505 SAND CANYON AVENUE, D1  
IRVINE, CA 92618

NOT TO BE USED  
FOR CONSTRUCTION

# DULCIA

CHICAGO AVE. 75' S/O LE  
CORTE DR. - ROW  
RIVERSIDE, CA 92507

SHEET TITLE:  
PROPOSED  
ELEVATIONS

# A-4

DULCIA 100%ZD rev6-04.21.16.DWG

# DULCIA

CHICAGO AVENUE 75' S/O LE CONTE DRIVE - R.O.W. - RIVERSIDE, CA 92507

LOCATION



EXISTING



PROPOSED



Verizon Wireless  
2785 Mitchell Drive Bldg #9  
Walnut Creek, CA 94598



Cortel, Inc.  
14621 Arroyo Hondo  
San Diego, CA 92127

NORTHEAST LOOKING SWEST

**SHEET CONTENT:**

PHOTOSIMULATION  
VIEW NORTHEAST ELEVATION  
LOOKING SWEST

Sheet No.

1

# DULCIA

CHICAGO AVENUE 75' S/O LE CONTE DRIVE - R.O.W. - RIVERSIDE, CA 92507

LOCATION



EXISTING



PROPOSED



Verizon Wireless  
2785 Mitchell Drive Bldg #9  
Walnut Creek, CA 94598



Cortel, Inc.  
14621 Arroyo Hondo  
San Diego, CA 92127

SOUTHWEST LOOKING NORTHEAST

SHEET CONTENT:

PHOTOSIMULATION  
VIEW SOUTHWEST ELEVATION  
LOOKING NORTHEAST

Sheet No.

2

# DULCIA

CHICAGO AVENUE 75' S/O LE CONTE DRIVE - R.O.W. - RIVERSIDE, CA 92507

LOCATION



EXISTING



PROPOSED



Verizon Wireless  
2785 Mitchell Drive Bldg #9  
Walnut Creek, CA 94598



Cortel, Inc.  
14621 Arroyo Hondo  
San Diego, CA 92127

NORTH LOOKING SOUTH

SHEET CONTENT:

PHOTOSIMULATION  
VIEW NORTH ELEVATION LOOKING  
SOUTH

Sheet No.

3

# DULCIA

CHICAGO AVENUE 75' S/O LE CONTE DRIVE - R.O.W. - RIVERSIDE, CA 92507

LOCATION



EXISTING



PROPOSED



PROPOSED VERIZON EQUIPMENT  
AREA WITH VINE FENCE  
SCREENING



Verizon Wireless  
2785 Mitchell Drive Bldg #9  
Walnut Creek, CA 94598



Cortel, Inc.  
14621 Arroyo Hondo  
San Diego, CA 92127

NORTH LOOKING SOUTH

SHEET CONTENT:

PHOTOSIMULATION  
VIEW NORTH ELEVATION LOOKING  
SOUTH

Sheet No.

4









