

OLIVE CREST YOUTH HOUSING DEVELOPMENT

PR-2024-001722 (CONDITIONAL USE PERMIT AND DESIGN REVIEW)

Community & Economic Development Department

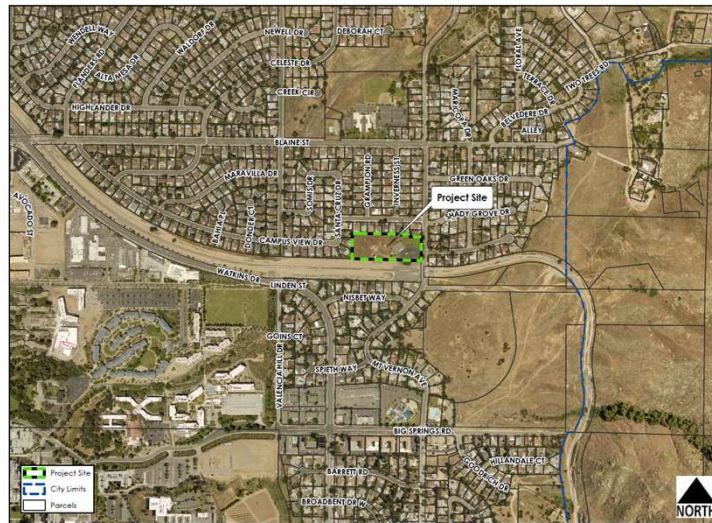
Planning Commission

Agenda Item: 4

April 10, 2025

RiversideCA.gov

LOCATION MAP

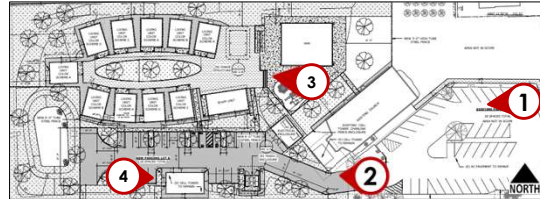


2



RiversideCA.gov

EXISTING SITE PHOTOS



3

RiversideCA.gov

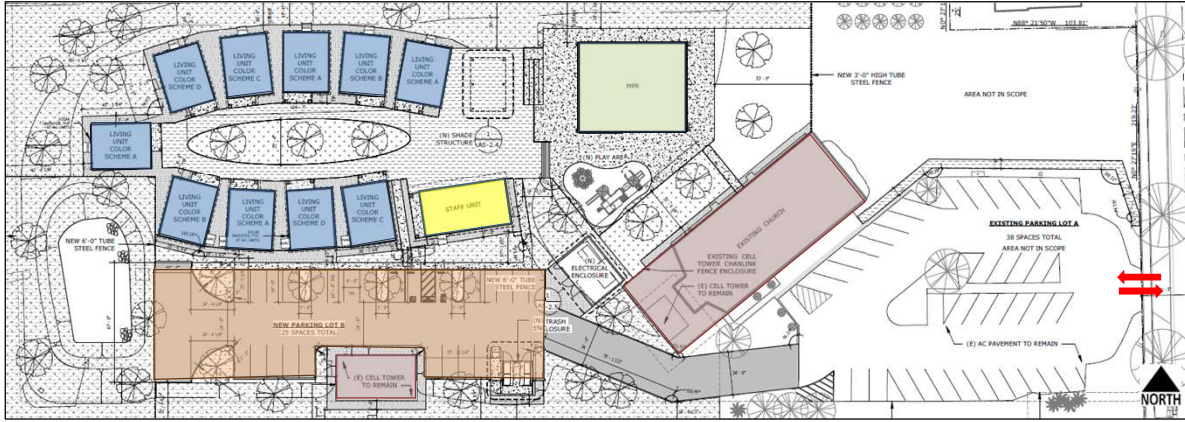
ZONING MAP



4

RiversideCA.gov

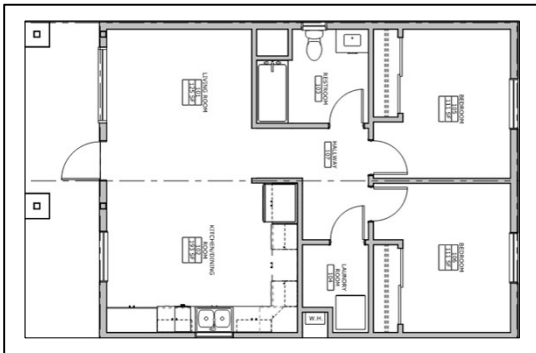
SITE PLAN



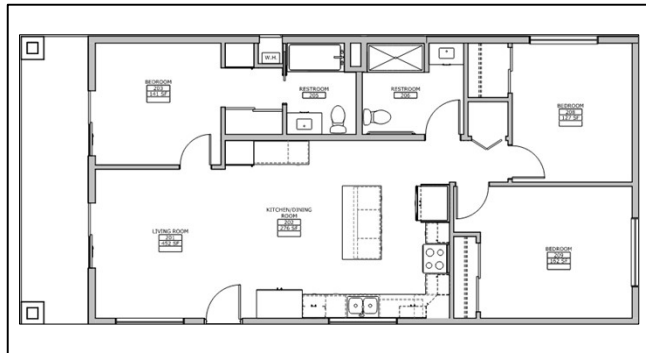
- Proposed Housing Building**
- Proposed Staff Building**
- Proposed Multi-Purpose Room**
- Existing Buildings to Remain**
- New Parking**



FLOOR PLANS – HOUSING & STAFF UNITS



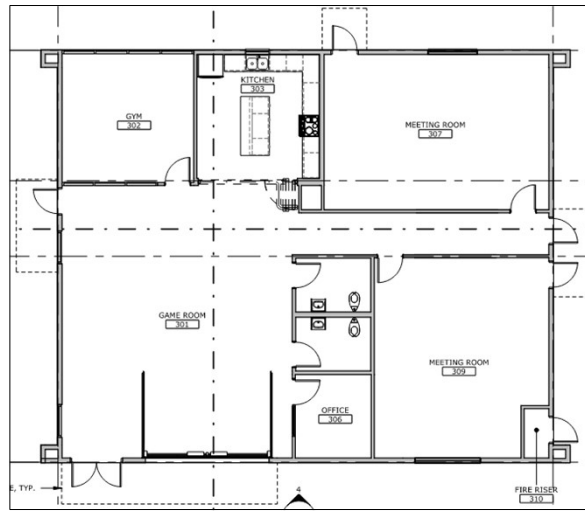
Two Bedrooms Units



Three Bedroom Unit



FLOOR PLANS – MULTI-PURPOSE ROOM



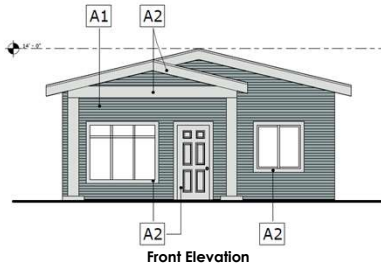
7

RiversideCA.gov

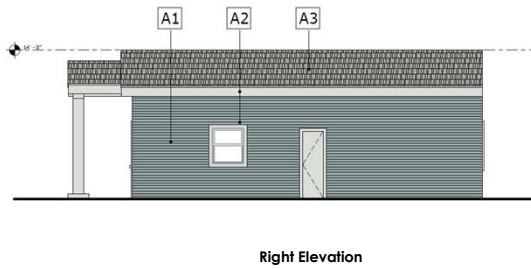
BUILDING ELEVATIONS – HOUSING BUILDING A

Materials:

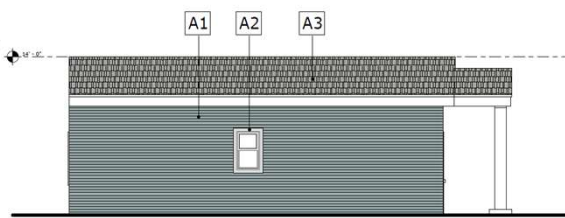
-  A1 - HANDED PLANK LAP HORIZONTAL SIDING, PINKISH GREY, 24" X 8" (SEE FINISH SCHEDULE)
-  A2 - METAL PANEL COLUMN, SQUARE PANEL, 24" X 24" (SEE FINISH SCHEDULE)
-  A3 - ROOF SHINGLES, GRANULAR SURFACE WHITE
-  A4 - PLASTER, 24" X 24" PANEL, GRAY
-  A5 - METAL PANEL, COLUMN, SQUARE PANEL, 24" X 24" (SEE FINISH SCHEDULE)
-  A6 - HANDED PLANK LAP HORIZONTAL SIDING, SANDY, UNIFORM, 24" X 8" (SEE FINISH SCHEDULE)
-  A7 - PLASTER, 24" X 24" PANEL, TAN
-  A8 - HANDED PLANK LAP HORIZONTAL SIDING, SANDY UNIFORM, 24" X 8" (SEE FINISH SCHEDULE)
-  A9 - HANDED PLANK LAP HORIZONTAL SIDING, SANDY UNIFORM, 24" X 8" (SEE FINISH SCHEDULE)
-  A10 - PLASTER, 24" X 24" PANEL, TAN
-  A11 - METAL PANEL, COLUMN, SQUARE PANEL, 24" X 24" (SEE FINISH SCHEDULE)
-  A12 - HANDED PLANK LAP HORIZONTAL SIDING, SANDY UNIFORM, 24" X 8" (SEE FINISH SCHEDULE)



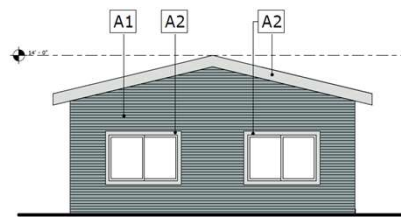
Front Elevation



Right Elevation



Rear Elevation



Left Elevation

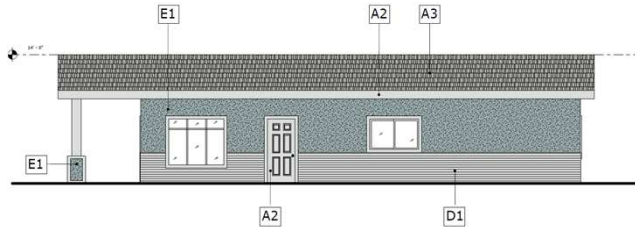
8



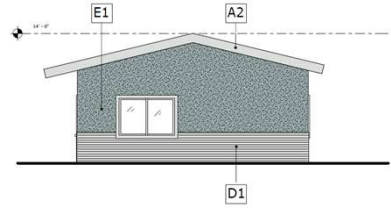
RiversideCA.gov

BUILDING ELEVATIONS – STAFF BUILDING

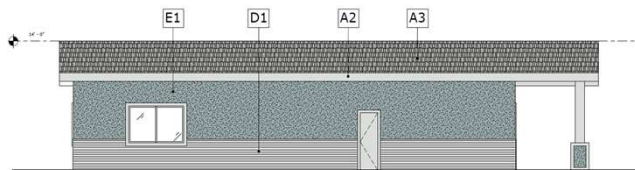
Materials:



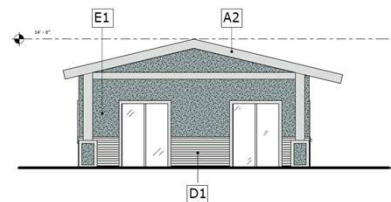
North Elevation



East Elevation



South Elevation



West Elevation

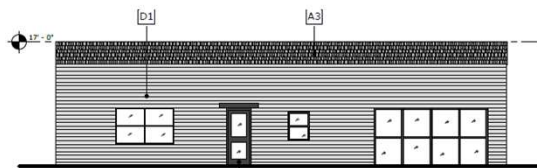
9



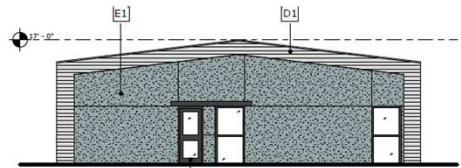
RiversideCA.gov

BUILDING ELEVATIONS – MULTI-PURPOSE ROOM

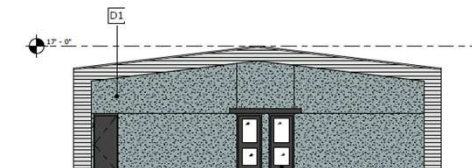
Materials:



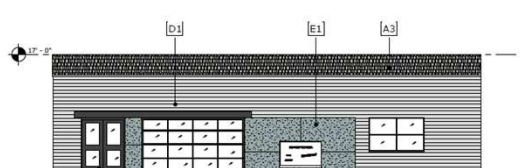
North Elevation



South Elevation



East Elevation



West Elevation

10



RiversideCA.gov

CONCEPTUAL LANDSCAPE PLAN



11

RiversideCA.gov

STRATEGIC PLAN ALIGNMENT



Strategic Priority No. 2- Community Well-Being

Goal No. 2.1 - Facilitate the development of a quality and diverse housing supply that is available and affordable to a wide range of income levels.

Cross-Cutting Threads



12

RiversideCA.gov

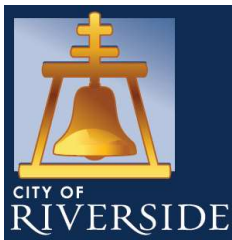
RECOMMENDATIONS

That the Planning Commission:

- **DETERMINE** this project is exempt from the California Environmental Quality Act (CEQA) Guidelines pursuant to Section 15332 (In-Fill Development Projects) as this project will not have a significant effect on the environment; and
- **APPROVE** Planning Case PR-2024-001722 (Conditional Use Permit and Design Review), based on the findings and subject to the recommended conditions included in the staff report.



13

RiversideCA.gov


OLIVE CREST YOUTH HOUSING DEVELOPMENT

PR-2024-001722 (CONDITIONAL USE PERMIT AND DESIGN REVIEW)

Community & Economic Development Department

Planning Commission

Agenda Item: 4

April 10, 2025

RiversideCA.gov

GENERAL PLAN MAP (FOR REFERENCE ONLY)

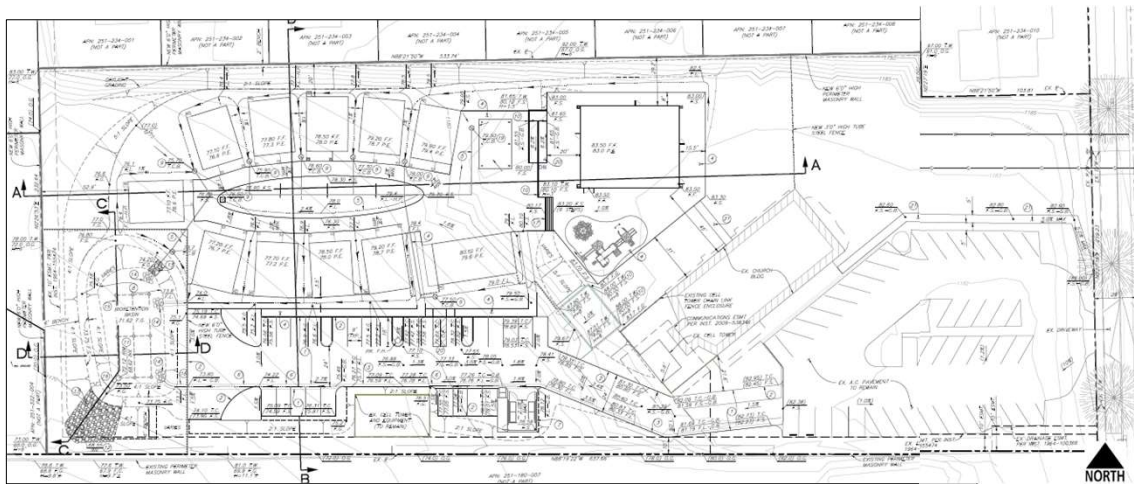


15



RiversideCA.gov

GRADING PLAN (FOR REFERENCE ONLY)



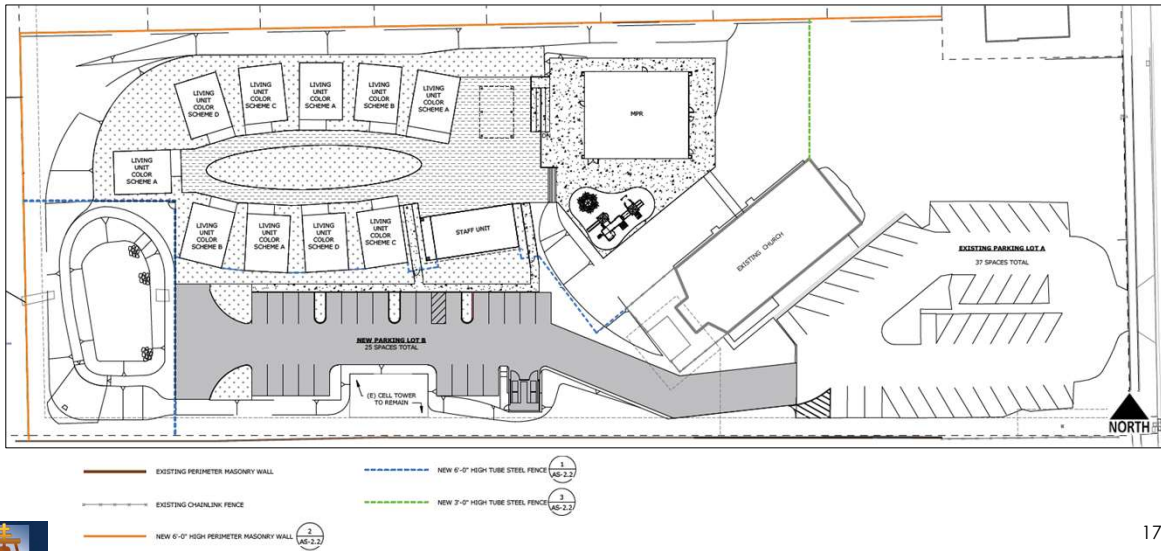
MT. VERNON AVENUE

16



RiversideCA.gov

FENCE AND WALL PLAN (FOR REFERENCE ONLY)



MT. VERNON AVENUE

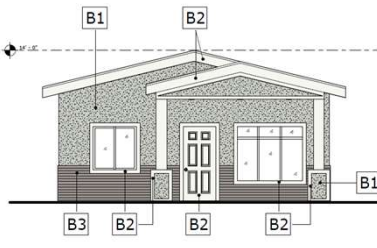


RiversideCA.gov

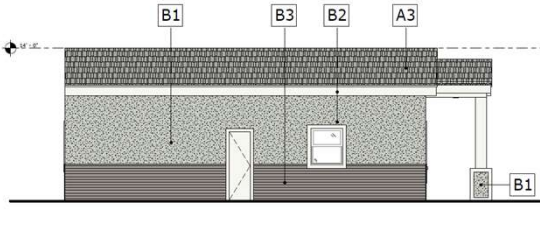
BUILDING ELEVATIONS – HOUSING BUILDING B (FOR REFERENCE ONLY)

Materials:

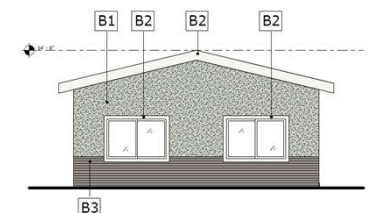
- B1 - HORIZONTAL MASONRY (SEE DETAIL B1 FOR FINISH)
- B2 - VERTICAL MASONRY (SEE DETAIL B2 FOR FINISH)
- B3 - HORIZONTAL MASONRY (SEE DETAIL B3 FOR FINISH)
- A1 - ROOF SHINGLES (DARK GRAY)
- A2 - METAL PANELS (SILVER GRAY)
- A3 - METAL PANELS (DARK GRAY)
- E1 - METAL PANELS (SILVER GRAY)
- E2 - METAL PANELS (DARK GRAY)
- E3 - METAL PANELS (SILVER GRAY)
- E4 - METAL PANELS (DARK GRAY)
- E5 - METAL PANELS (SILVER GRAY)
- E6 - METAL PANELS (DARK GRAY)
- E7 - METAL PANELS (SILVER GRAY)
- E8 - METAL PANELS (DARK GRAY)
- E9 - METAL PANELS (SILVER GRAY)
- E10 - METAL PANELS (DARK GRAY)



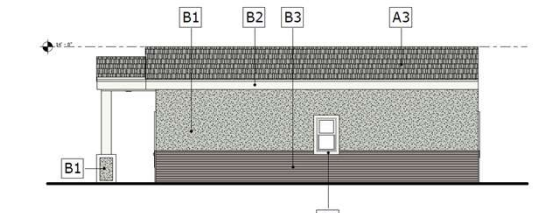
Front Elevation



Right Elevation



Rear Elevation



Left Elevation



RiversideCA.gov

