

ESTABLISH AN ON-STREET ACCESSIBLE ON-STREET PARKING SPACE PROGRAM

Public Works Department

Meeting

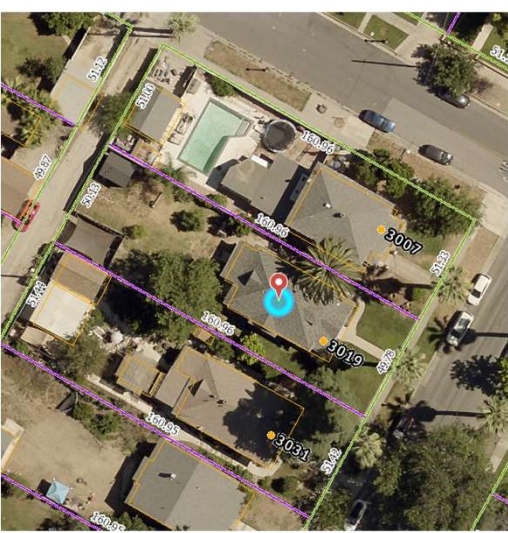
Transportation Board: October 2, 2024

RiversideCA.gov

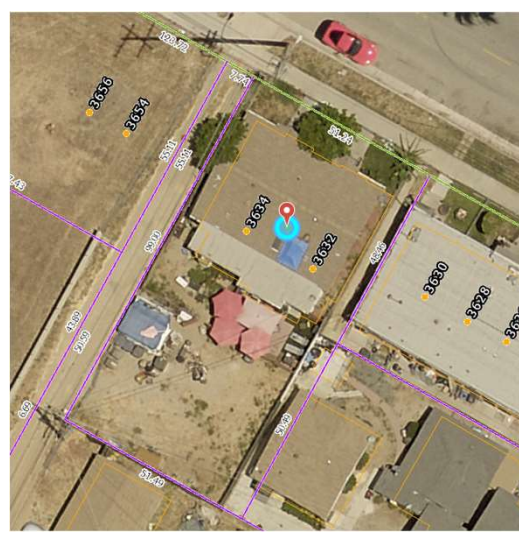
BACKGROUND

1. The Public Works Department has received several resident requests for an on-street accessible parking space to be installed in front of a residential property.
2. The City does not currently have any guidelines, policies, or criteria in place to review and process on-street accessible parking spaces requests from residents.
3. At the August 7, 2024, meeting, the Transportation Board recommended City staff to finalize a guidelines and application document with policy and criteria specific to the City of Riverside.

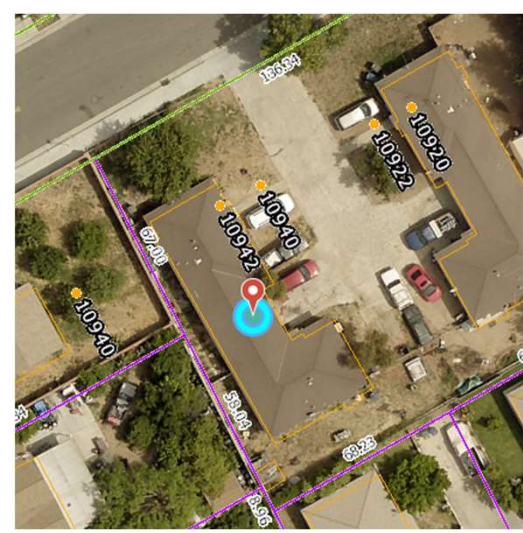




3019 Brockton Ave.



3634 First St.



10940 Sunnyslope Ave.



DISCUSSION

1. Establishment of an on-street accessible parking space program allows the City to install a designated parking space for disabled residents with eligible disability placards/plates.
 - * additional construction costs for curb ramp, modifications to the right of way, roadway, or sidewalk is responsibility of resident *
2. Establishing program, policy, guidelines, and criteria to address current and future requests.
 - * City is not legally required to provide ADA space *



3. The program would be established that would require the applicant to demonstrate sufficient need for on-street accessible parking near their residential property, including reviewing and submitting a filled-out application to the City.
4. The application and approval process for an on-street accessible parking space will be a multi-step process, that would conclude with City Council approval.

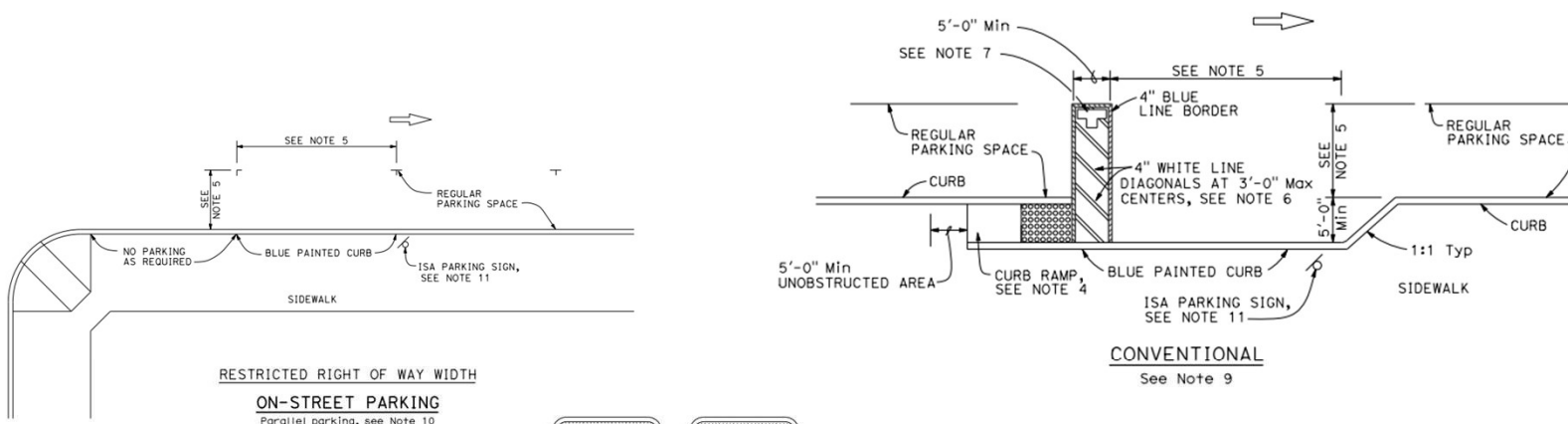


Arlanza Elementary School (Rutland Avenue)
(not curb adjacent to a resident) 5



RiversideCA.gov

CALTRANS A90B STANDARD PLAN



NO
PARKING



SIGN R99 (CA)



SIGN R99C (CA)
See Note 3



PLAQUE R99B (CA)

SIGN R99 (CA) with PLAQUE R99B (CA)

1. In determining need for on-street accessible parking space, City staff would consider the following criteria:
 - a. applicant must be a full time City of Riverside resident and have a permanent DMV issued placard or plate
 - c. for apartments, condos, and townhouses, all on-site parking options have been exhausted.
 - d. for single family dwellings, off-street parking must be unavailable or inaccessible.
2. Additionally, an on-site property review would be conducted by City staff to determine existing conditions for off-street parking, and current street conditions near the property within the City's right-of-way for potential on-street accessible parking space installation.

7



RiversideCA.gov

PROPOSED GUIDELINES AND APPLICATION (CONTINUED)

3. Furthermore, City staff may review, re-evaluate and remove residential on-street accessible parking spaces. Possible circumstances that warrant removal of parking space:
 - a. the space is no longer needed
 - b. the applicant no longer resides in the property
 - c. the parking space is being misused
 - d. the applicant no longer qualifies for a disabled parking placard/plate per the State of California and DMV.



8



2.4 “Support programs and innovations that enhance community safety, encourage neighborhood engagement, and build public trust.”

Cross-Cutting Threads

This item aligns with these threads.



Community Trust



Fiscal Responsibility



Sustainability & Resiliency



Equity



Innovation



RECOMMENDATION

That the Transportation Board recommend that the Mobility & Infrastructure Committee review the proposed on-street accessible parking space program for residential requests.

