



# **Gage Canal Multipurpose Trail Master Plan**

---

**Parks, Recreation and Community Services  
Department**

Park and Recreation Commission  
February 2, 2026

# Gage Canal Multi-Purpose Trail

PHASE 1

City of Riverside  
Parks, Recreation and Community Services  
Department



# PROJECT OVERVIEW

## BACKGROUND

- Funded by California Natural Resources Agency (CNRA) Urban Greening Grant
- Approximately 2 miles in length of covered canal portion between Palmyrita Ave and Blaine street

## PROJECT GOALS

- Plant 600 trees: application documents indicate an estimated net GHG benefit of 868 MT CO<sub>2</sub>
- Construct asphalt concrete-paved multi-use path and natural surface trail in parallel
- Install solar lighting along the length of the project corridor
- Create unique access points with pedestrian and bicyclist amenities
- Install crossing enhancements where the trail will cross existing roadways





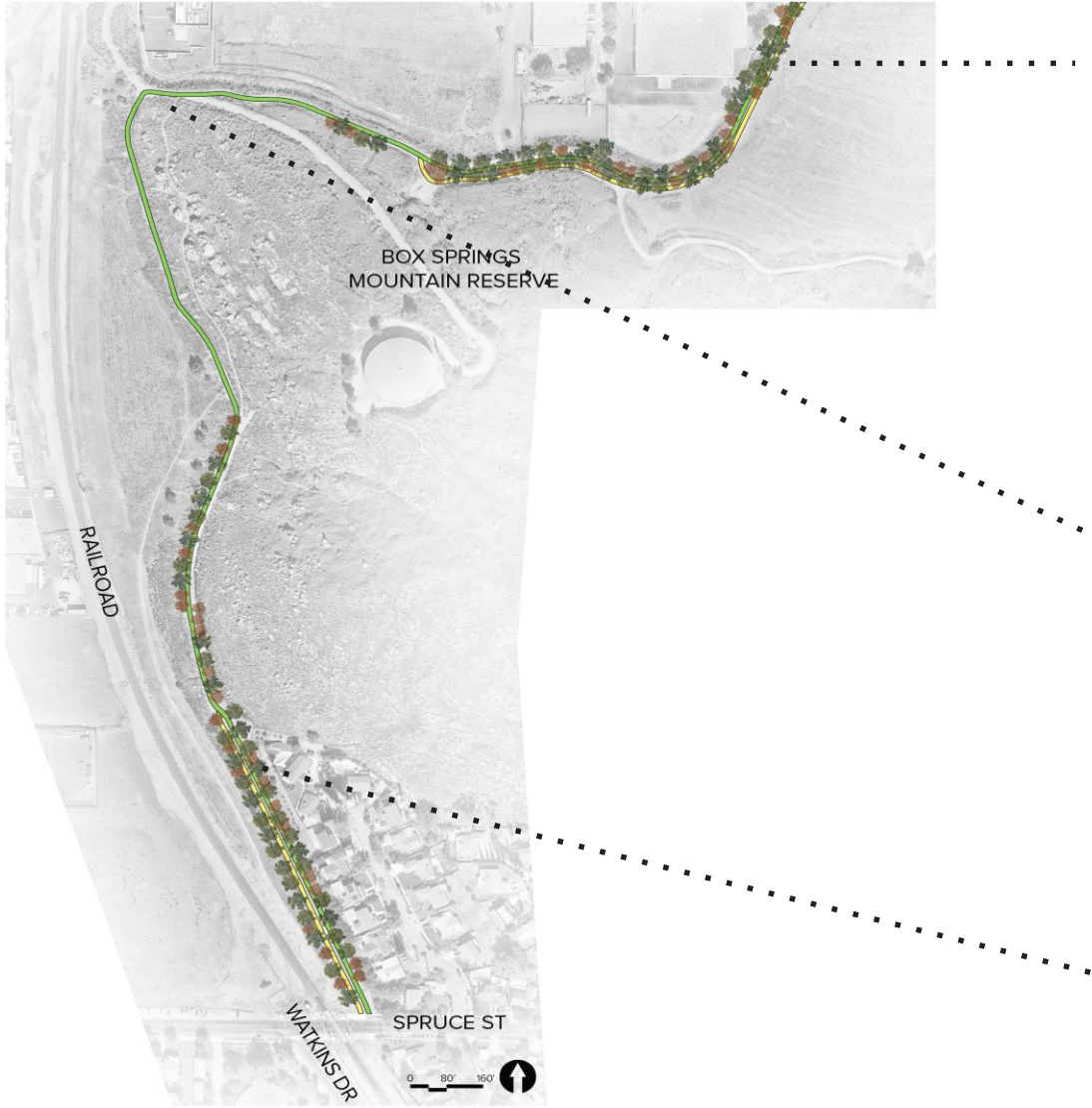
# EXISTING CONDITIONS UPDATE

## Gage Canal Trail - RESIDENTIAL SECTION



# EXISTING CONDITIONS UPDATE

## Gage Canal Trail - BOX SPRINGS SECTION





# EXISTING CONDITIONS UPDATE

## Gage Canal Trail - INDUSTRIAL SECTION



# OUTREACH

Survey - OVER 500 RESPONSES

## Physical:

- 500 Mailers distributed to residents within ¼ mile of the project area
- 10 yard signs at Trail entries and key locations
- Project flyers distributed in AUSD student take-home packages

## Digital:

- City of Riverside and PRCSD Facebook
- City of Riverside and PRCSD Instagram
- PRCSD website post
- Press Enterprise Newspaper website
- UC Riverside Highlander Newspaper website
- Riverside Unified School District parent notices via PeachJar, and inclusion in Principal's newsletters
- Alvord Unified School parent notices via PeachJar

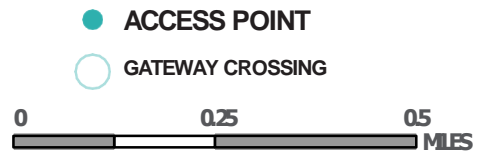


## THREE DESIGN ZONES

### from Blaine Street to Watkins Drive

### from Spruce Street to Malborough Road

### from Marlborough Road to Palmyrita Avenue





# CONCEPT PLANS

## ZONE 1: Residential

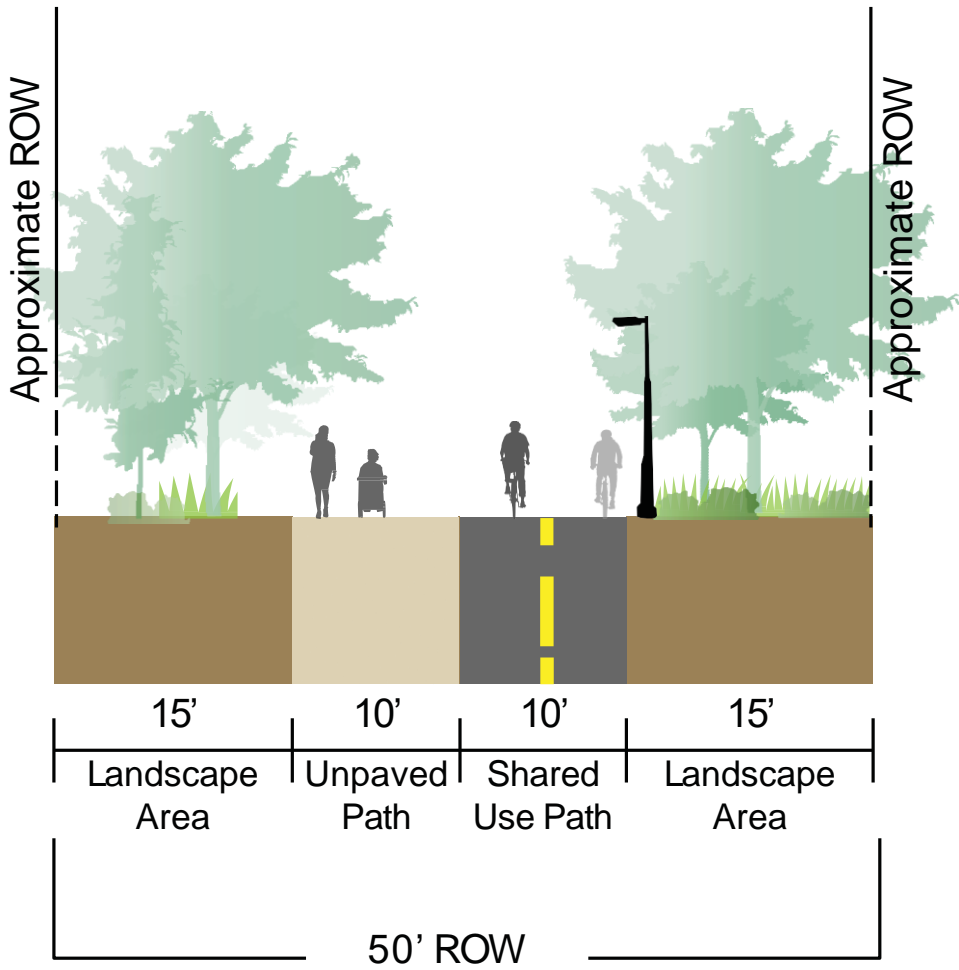


Trail concept rendering located between Blaine Street and Watkins Drive looking north



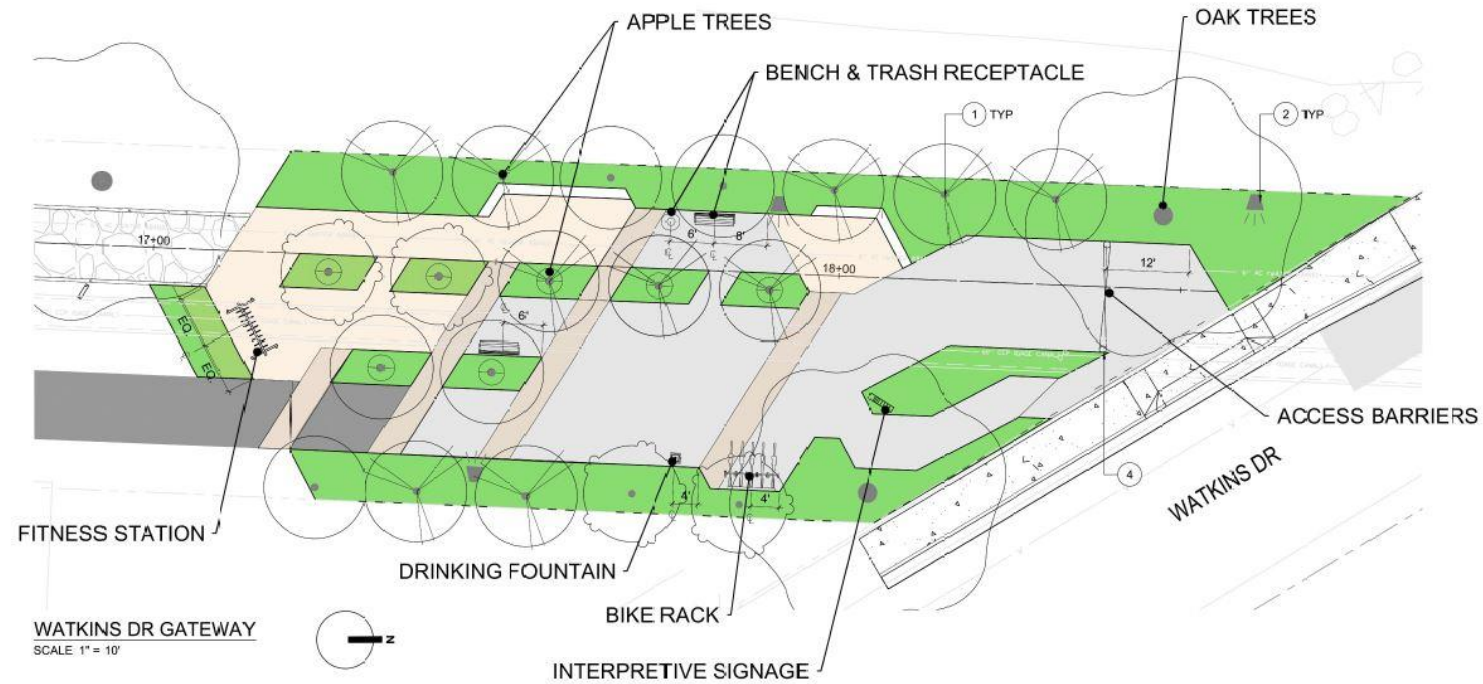
Key Map

## TYPICAL SECTION DETAIL



# CONCEPT PLANS

## ZONE 1: Residential



Trail gateway concept rendering located at Watkins Drive looking south



# CONCEPT PLANS

## ZONE 1: Residential

### LANDSCAPE: URBAN ORCHARD



- Agricultural History
- Appropriate for Trailhead/Gateways
- Most applicable to Residential Section
- Potential Partnerships for Tending Trees

### LIGHTING



- Reduce light pollution for neighboring residents
- Fixtures should be used to direct all illumination down towards the trail surface
- 0.2-0.5 foot-candles

### AMENITIES



- Seating
- Water Fountains
- Trash Receptacles
- Bicycle parking

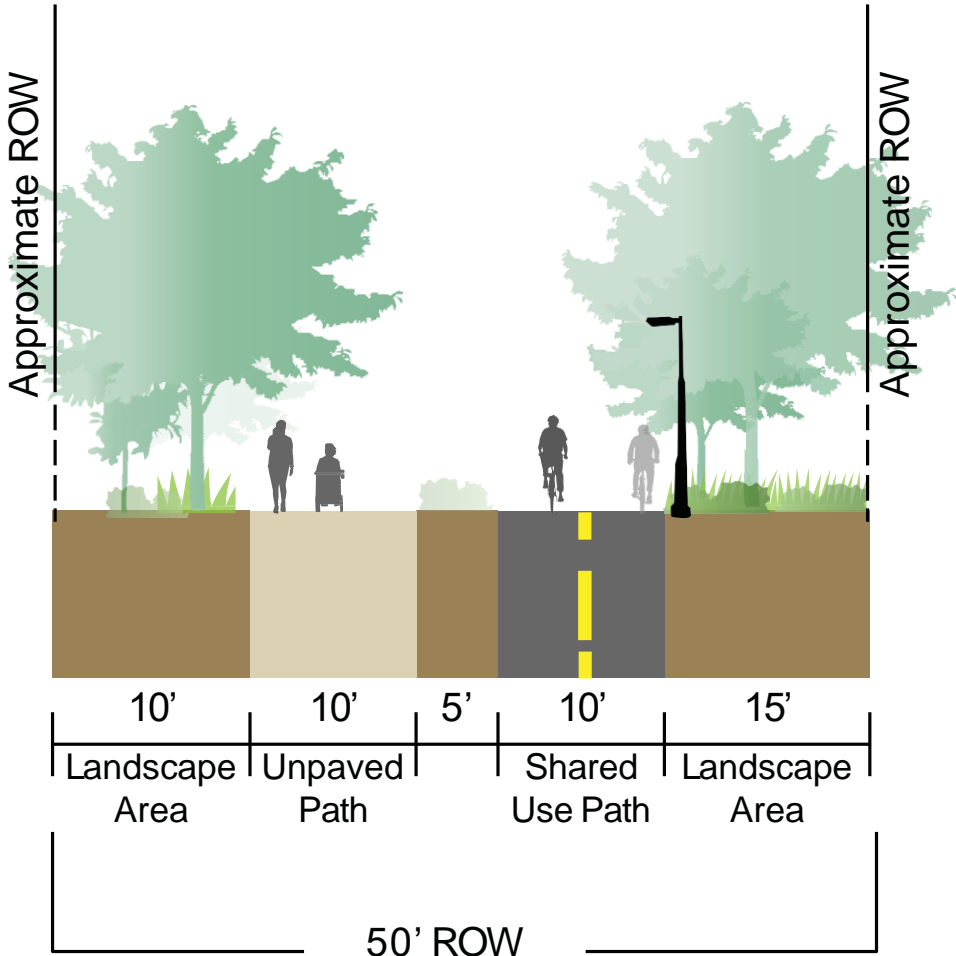


# CONCEPT PLANS

## ZONE 2 : Box Springs

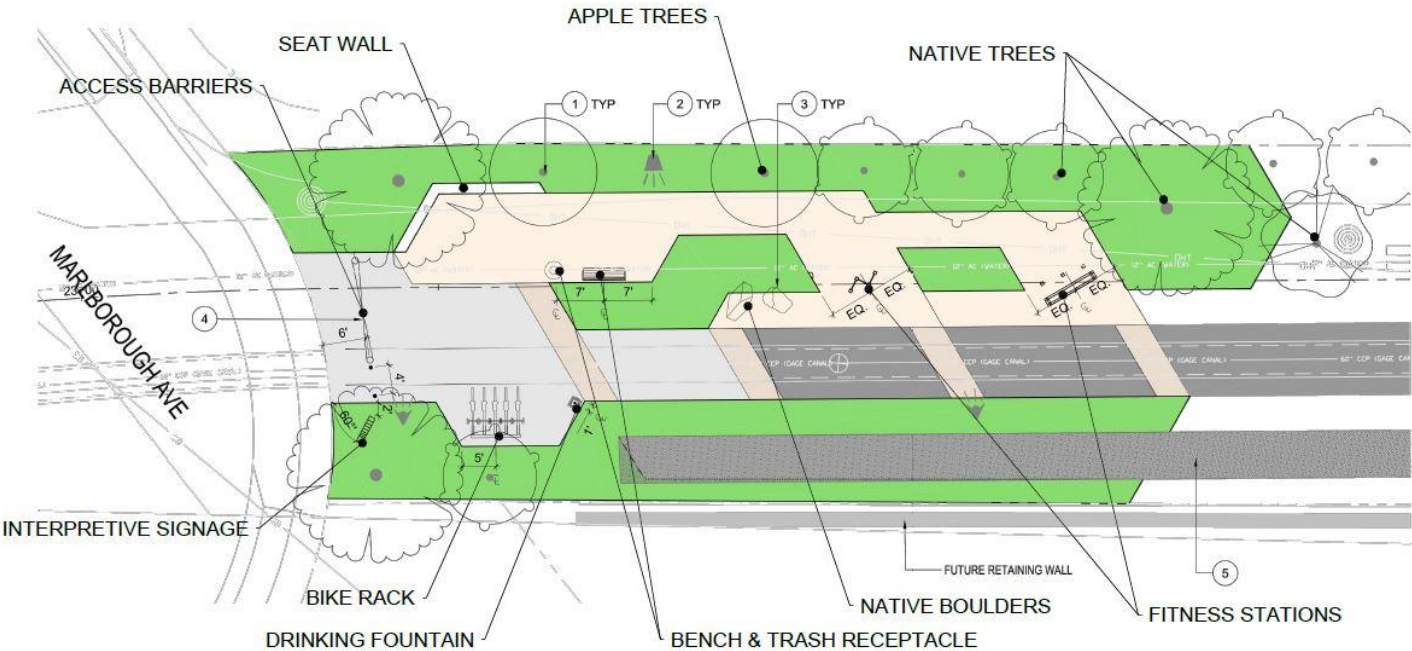


### TYPICAL SECTION DETAIL



# CONCEPT PLANS

## ZONE 2 : Box Springs



Trail gateway concept rendering at Malborough Avenue



# CONCEPT PLANS

## ZONE 2 : Box Springs

### LANDSCAPE: CONNECTION TO NATURE



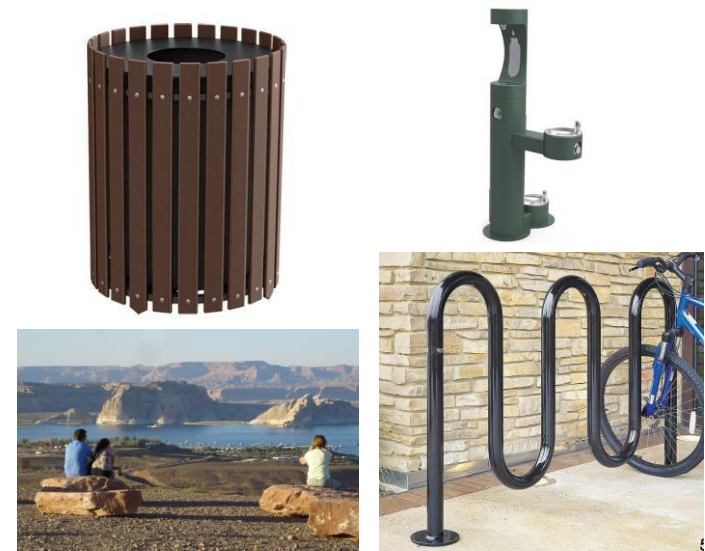
- Enhance Local Habitat
- Drought Tolerant
- Monumental Trees + Small Trees
- Reference Box Springs Sage Scrub Community

### LIGHTING



- Reduce lighting to limit disruption to sensitive ecosystems
- Fixtures should be used to direct all illumination down towards the trail surface
- 0.1-0.3 foot-candles

### AMENITIES

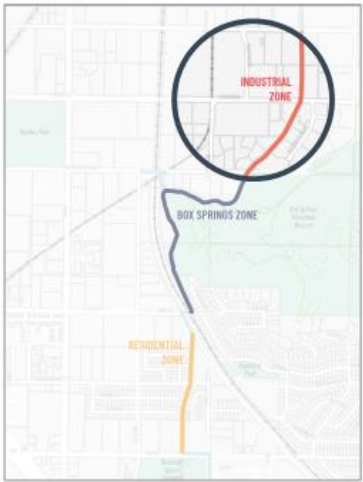


- Seating
- Water Fountains
- Trash Receptacles
- Bicycle parking



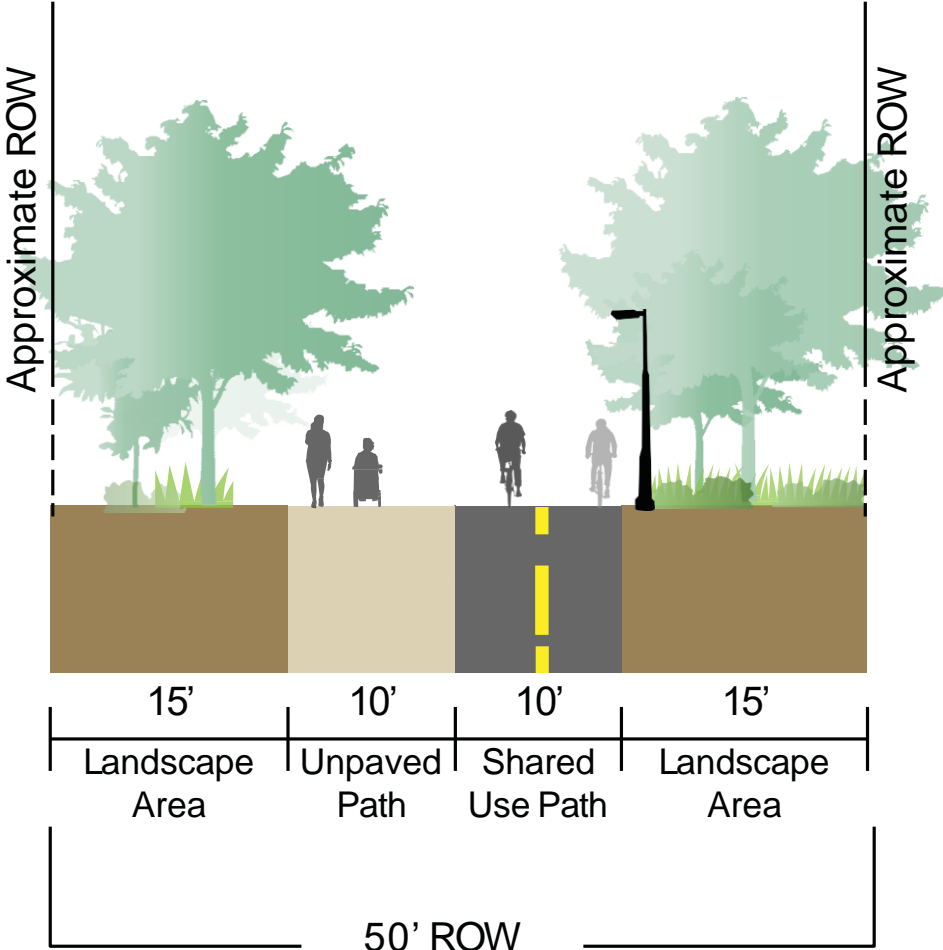
# CONCEPT PLANS

## ZONE 3 : Industrial



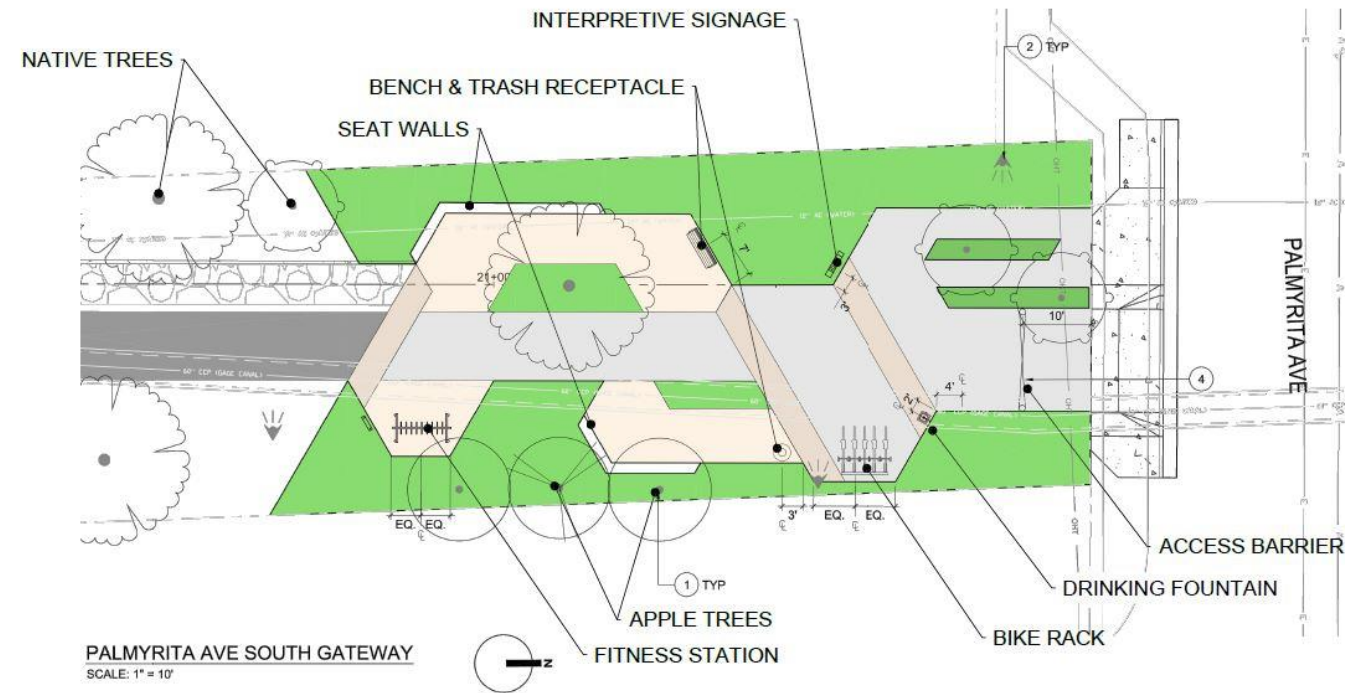
Key Map

## TYPICAL SECTION DETAIL



# CONCEPT PLANS

## ZONE 3 : Industrial



Trail gateway concept rendering at Columbia Avenue





# CONCEPT PLANS

## ZONE 3 : Industrial

### LANDSCAPE



- References Industrial Section Landscape Context
- Industrial Section Trailheads/ Gateways
- Monumental Trees + Small Trees

### LIGHTING



- Illumination of the trail surface can increase
- Cut-off fixtures are not necessary
- 0.5-1.0 foot-candles

### AMENITIES



- Seating
- Water Fountains
- Trash Receptacles
- Bicycle parking



# **NEXT STEPS**

**Bidding – January 2026 – April 2026**

**Construction & Installation – Spring 2026 – Winter 2027**

**Anticipated Project Completion – Spring 2027**