



# RIVERSIDE PUBLIC UTILITIES

## Board Memorandum

**BOARD OF PUBLIC UTILITIES**

**DATE: DECEMBER 8, 2025**

**SUBJECT: PLAZA SUBSTATION 4KV TO 12KV CONVERSION AREA 4 PROJECT, CIRCUITS 444 AND 445 CUTOVER TO CIRCUIT 1253 – WORK ORDER NO. 2410179 FOR A TOTAL CAPITAL EXPENDITURE OF \$210,000**

**ISSUE:**

Consider the approval of Work Order No. 2410179 for a total capital expenditure of \$210,000 for the Plaza Substation 4kV to 12kV Conversion Area 4 Project, Circuits 444 and 445 Cutover to Circuit 1253.

**RECOMMENDATION:**

That the Board of Public Utilities approve Work Order No. 2410179 for a total capital expenditure of \$210,000 for the Plaza Substation 4kV to 12kV Conversion Area 4 Project, Circuits 444 and 445 Cutover to Circuit 1253.

**BACKGROUND:**

The Electric System Master Plan (ESMP) recommends the conversion of all remaining 4kV distribution circuits to a modern 12kV system to enhance system capacity and reliability. 4kV distribution facilities are made up of components that are obsolete, inefficient, and difficult to procure, especially during equipment failures and unexpected outages. On December 22, 2020, the Board of Public Utilities approved Work Order No. 1904777 for the Plaza Substation 4kV to 12kV Make-Ready for Circuits 444 and 445. The project included the replacement of all the facilities that make up the distribution system including deteriorated wooden poles, transformers, pole switches and related electrical distribution components. This work was completed to support the transfer of the system to a 12kV circuit.

This project will complete the installation of the remaining components necessary to convert the existing 4kV electrical distribution facilities to 12kV. It will also establish additional field ties to nearby 12kV circuits to enhance power quality, system reliability, safety, and flexibility.

**DISCUSSION:**

The scope of work for this project includes the installation of approximately 1,435 circuit feet of underground primary feeder cable, along with the replacement of thirteen (13) lateral and sublateral cutouts with fused protection and associated distribution facilities. All work will be

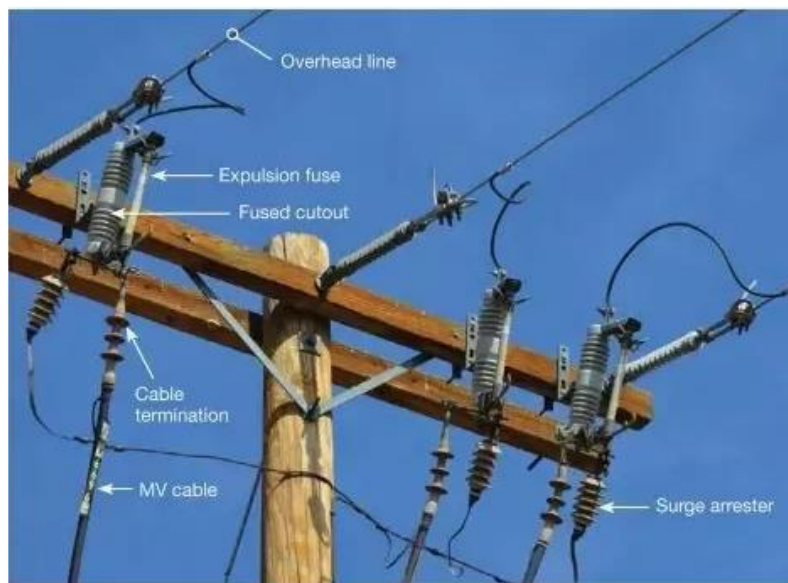
performed in compliance with RPU current construction standards and in accordance with California State mandated General Order 95.

The project will upgrade electric distribution facilities within the Magnolia Center neighborhood, located in the vicinity west of Pachappa Drive, north of Merrill Avenue, east of Magnolia Avenue and south of Panorama Road along Olivewood Avenue.

RPU electric field crews will perform the construction of this project, and no civil underground electric work is planned. Intermittent electric service disruptions will be coordinated during construction and advanced outage notifications will be issued to minimize the impacts to customers.



Underground Primary Feeder Cables inside the Vault



Fused Cutouts on Crossarm

The project/fiscal breakdown is as follows:

Work Type	Performed By:	Amount (\$):		% of Total:
Design and Inspection	RPU Engineering and Operations	\$22,295		11%
Electrical Work	RPU Field Crews	Labor	\$117,919	\$187,705 89%
		Equipment	\$13,875	
		Materials	\$55,911	
<b>Work Order Total:</b>	<b>\$210,000</b>			<b>100%</b>
<b>Anticipated Start Date:</b>	<b>January 2026</b>			
<b>Anticipated Duration:</b>	<b>3 Weeks</b>			

The Work Order total above is, in effect, the Engineer's Estimate for this project as it is an in-house project designed and constructed by Public Utilities staff.

### **FISCAL IMPACT:**

The total fiscal impact is \$210,000. Sufficient funds are available in Public Utilities Electric Capital Account No. 6130100-470644.

Prepared by:	Daniel Honeyfield, Utilities Assistant General Manager/Energy Delivery
Approved by:	David A. Garcia, Utilities General Manager
Certifies availability of funds:	Kristie Thomas, Assistant Chief Financial Officer/Finance Director
Approved by:	Rafael Guzman, Assistant City Manager
Approved as to form:	Rebecca McKee-Reimbold, Interim City Attorney

Attachments:

1. Project Site Map
2. Presentation