

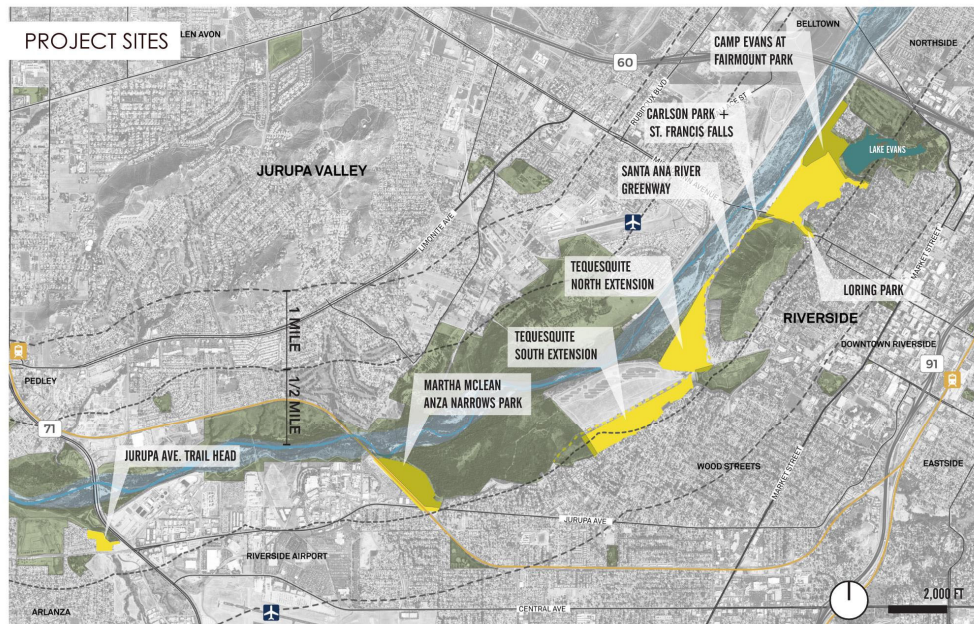
Riverside Gateway Parks Master Plans

Parks, Recreation and Community Services Department

City Council
October 25, 2022

RiversideCA.gov

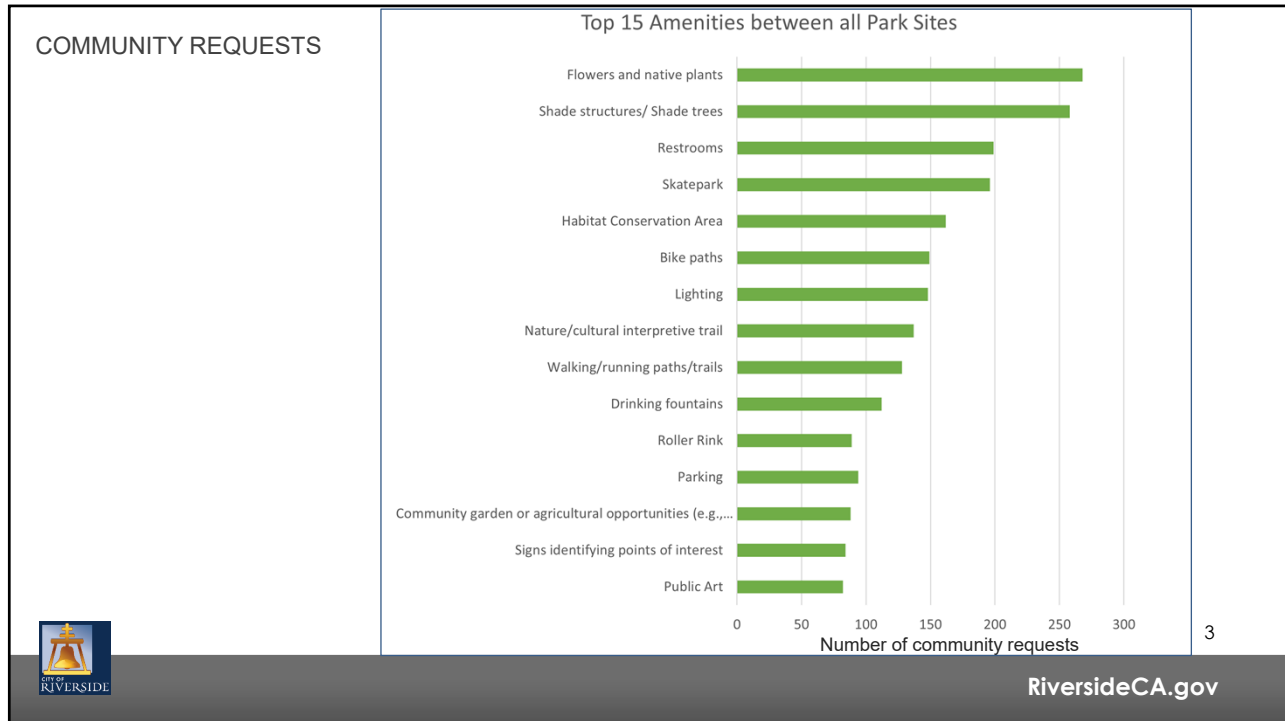
1



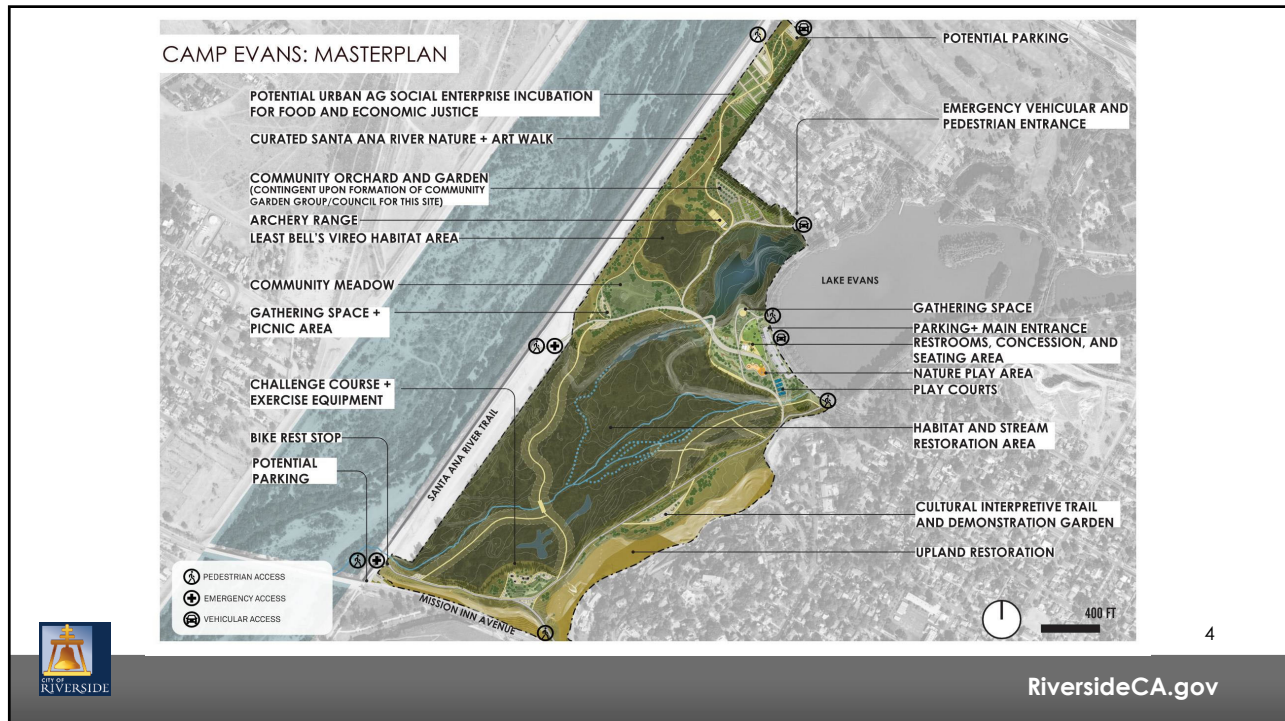
RiversideCA.gov

2

2

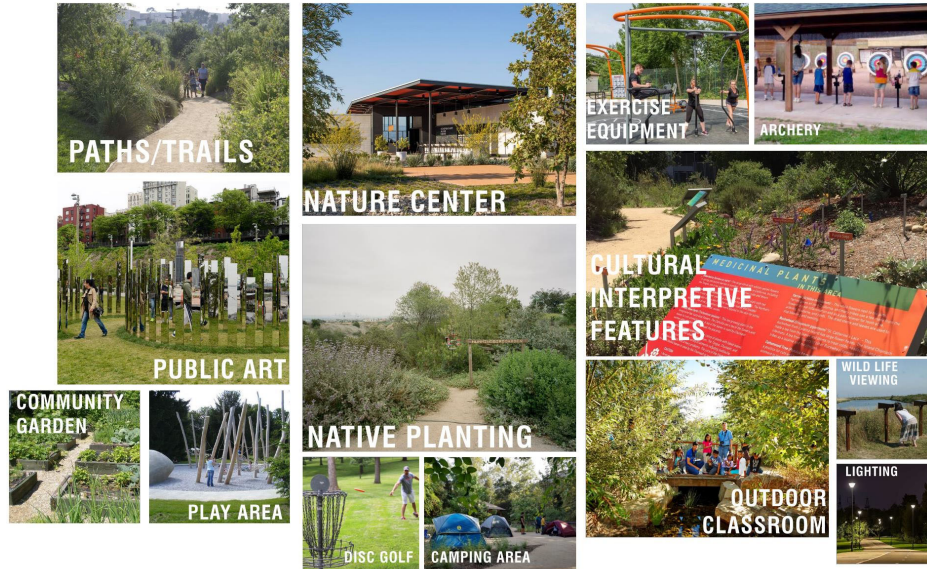


3



4

CAMP EVANS: A HIGH INTEREST IN NATURE AND RECREATIONAL OPPORTUNITIES



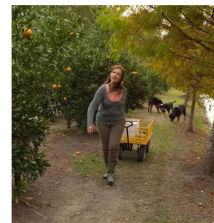
CAMP EVANS: MASTERPLAN



FORAGE GARDEN



NATURE AND ART WALK



COMMUNITY ORCHARD



URBAN FARM INCUBATOR



COMMUNITY ARCHERY RANGE



CAMP EVANS: MASTERPLAN

CURATED SANTA ANA RIVER NATURE + ART WALK
LEAST BELL'S VIREO HABITAT (EXISTING)
WILDLIFE VIEWING FEATURE

COMMUNITY MEADOW
PICNIC AREA + POTENTIAL RESERVATION CAMPING
GATHERING SPACE
OBSTACLE COURSE/PARKOUR FEATURES

HABITAT BUFFER PLANTING
STREAM AND HABITAT RESTORATION
HABITAT TRAIL + 50' FIREWISE BUFFER

PEDESTRIAN ACCESS
 EMERGENCY ACCESS
 VEHICULAR ACCESS

NATURE AND ART WALK

COMMUNITY MEADOW

POTENTIAL RESERVATION CAMPING

WILDLIFE VIEWING

GATHERING SPACE

200 FT

7

RiversideCA.gov

7

CAMP EVANS: MASTERPLAN

HABITAT BUFFER
STORMWATER TREATMENT WETLAND
HABITAT RESTORATION AREA
WETLAND OVERLOOK
GATHERING SPACE

FLEX MEADOW
PARKING (60 SPOTS)
RESTROOM, CONCESSION, SHADED PICNIC AREA

NATIVE GARDENS + ART INSTALLATIONS
NATURE PLAY AREA
4 PICKLEBALL COURTS

TRAILHEAD
EXISTING PATH TO REMAIN

PEDESTRIAN ACCESS
 EMERGENCY ACCESS
 VEHICULAR ACCESS

SHADE PICNIC AREA

FLEX MEADOW

NATIVE GARDEN WALK

GATHERING SPACE

NATURE PLAY AREA

RESTROOMS

200 FT

8

RiversideCA.gov

8

CAMP EVANS: MASTERPLAN

HABITAT TRAIL AND 50' FIREWISE BUFFER
 HABITAT AND STREAM RESTORATION AREA
 EXISTING PATH TO REMAIN
 CULTURAL INTERPRETIVE TRAIL AND DEMONSTRATION GARDENS
 UPLAND RESTORATION AREA
 HABITAT LANDSCAPE BUFFER

PEDESTRIAN ACCESS
 EMERGENCY ACCESS
 VEHICULAR ACCESS

CULTURAL INTERPRETIVE TRAIL AND DEMONSTRATION GARDENS

HABITAT EDGING AND BUFFER

HABITAT TRAIL

200 FT

9

RiversideCA.gov

9

CAMP EVANS: MASTERPLAN

HABITAT PATH AND BRIDGE
 17/2 MILE EXERCISE LOOP
 CHALLENGE COURSE
 NATIVE GARDENS
 FLEX MEADOW
 EXERCISE EQUIPMENT NODE
 TRAIL HEAD+ SIGNAGE
 MISSION INN AVENUE
 MOUNT RUBIDOUX

PEDESTRIAN ACCESS
 EMERGENCY ACCESS
 VEHICULAR ACCESS

CHALLENGE COURSE

CHALLENGE COURSE

NATIVE GARDENS

EXERCISE NODE

200 FT

10

RiversideCA.gov

10

CAMP EVANS: MASTERPLAN

TRAILHEAD + BIKE REST STOP

MULTI MODAL PATH + LIGHTING

UPLAND RESTORATION + OAK WOODLAND

11

RiversideCA.gov

11

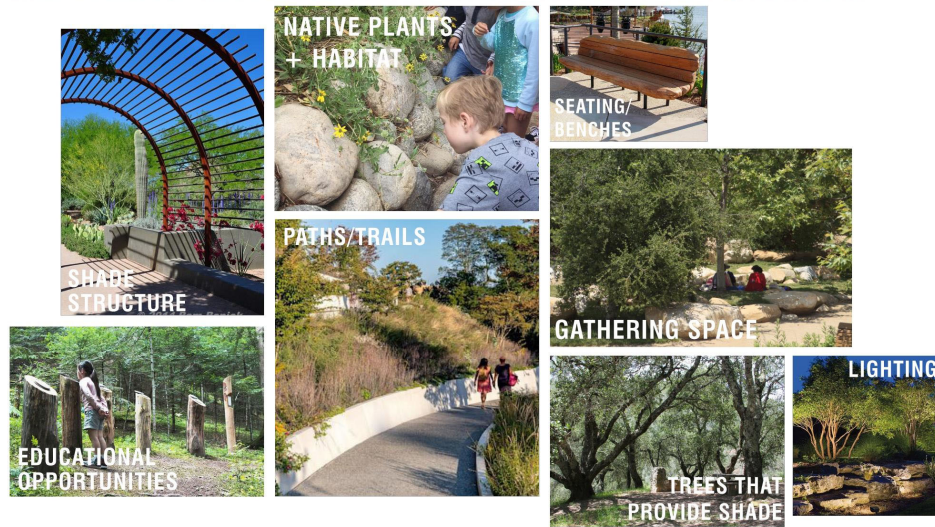
LORING PARK: MASTERPLAN

12

RiversideCA.gov

12

LORING PARK: A HIGH INTEREST IN NATURE AND PASSIVE RECREATIONAL OPPORTUNITIES

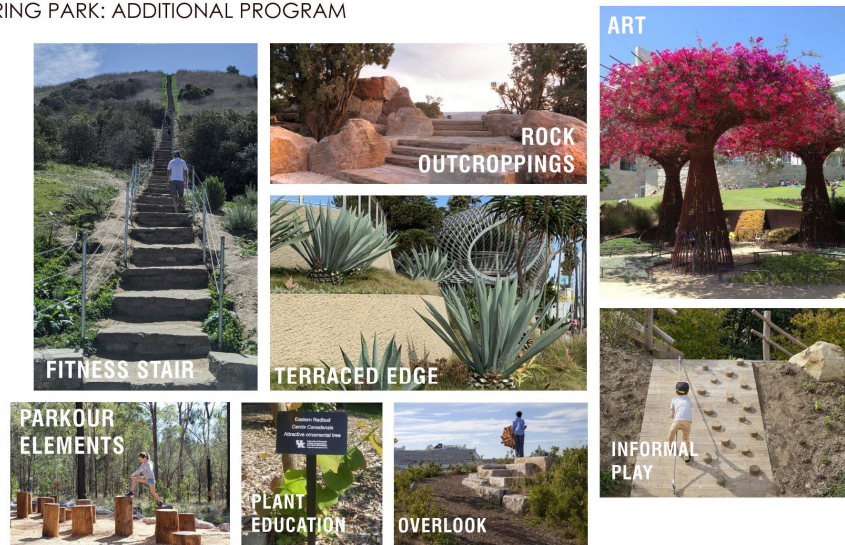


13

RiversideCA.gov

13

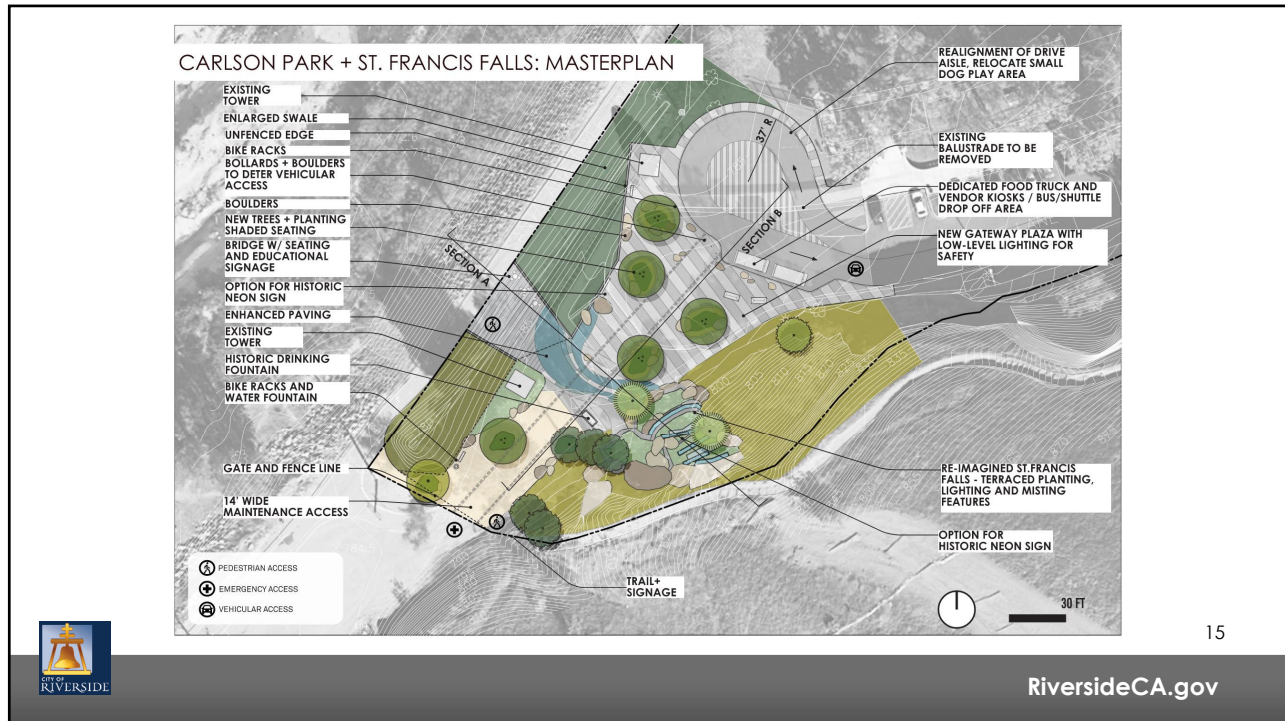
LORING PARK: ADDITIONAL PROGRAM



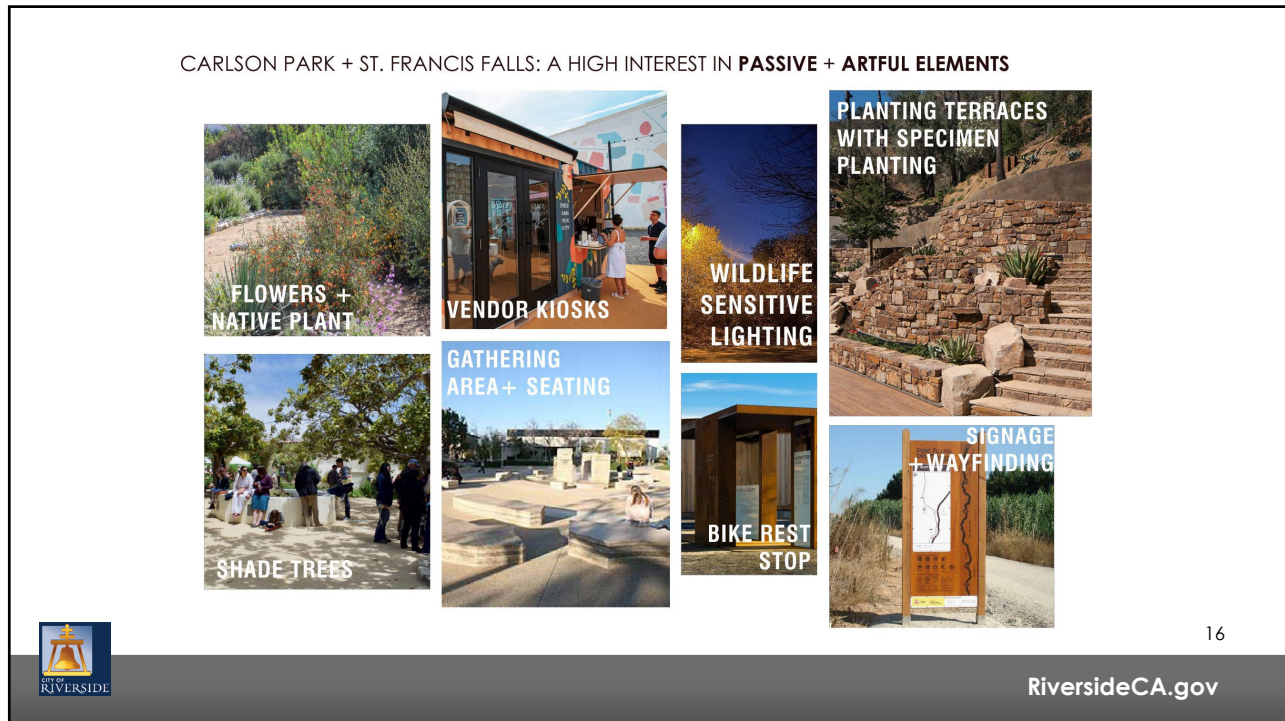
14

RiversideCA.gov

14



15



16

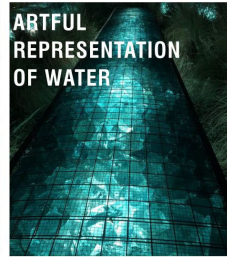
CARLSON PARK + ST. FRANCIS FALLS: ADDITIONAL PROGRAM



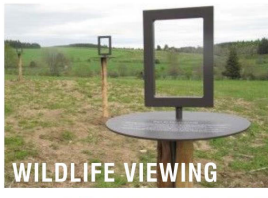
TERRACED PLANTING



SUPERGRAPHIC AT PARKING



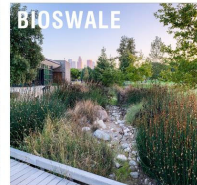
ARTFUL REPRESENTATION OF WATER



WILDLIFE VIEWING



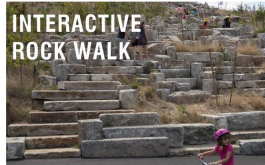
FLEXIBLE EVENT SPACES



BIOSWALE



DROUGHT TOLERANT PLANTING



INTERACTIVE ROCK WALK

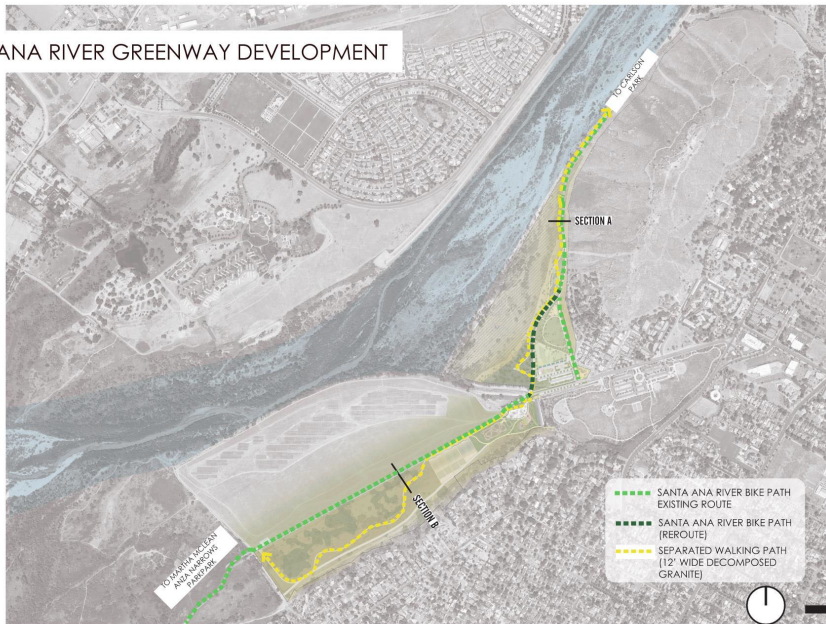


17

RiversideCA.gov

17

SANTA ANA RIVER GREENWAY DEVELOPMENT



18

RiversideCA.gov

18

SANTA ANA GREENWAY SECTIONS

SECTION A: ADJACENT DECOMPOSED GRANITE PATH ALONG EXISTING SANTA ANA RIVER BIKE PATH

SECTION B: SEPERATE DECOMPOSED GRANITE PATH FROM THE EXISTING SANTA ANA RIVER BIKE PATH

- ⊕ LIGHTING
- ⊕ SEATINGS/BENCHES
- ⊕ SHADE STRUCTURE
- ⊕ SHADE TREES
- ⊕ BIKE PATH
- ⊕ SIGNS
- ⊕ WALKING TRAILS

19

RiversideCA.gov

SANTA ANA RIVER GREENWAY: A HIGH INTEREST IN SAFETY, SHADE, AND HABITAT

SHADE

MILE MARKERS

REPAIR STATION + WATER BOTTLE FILLING STATIONS

SHADED REST STOPS

LIGHTING AND VISIBILITY

20

RiversideCA.gov

TEQUESQUITE NORTH EXTENSION: MASTERPLAN

BIological AVOIDANCE ZONE

ARROYO WALK (INDIGENOUS HISTORY OF WATER)

SART REROUTE

EQUESTRIAN REST STOP
- Corral, water, seating and shade structures

EXERCISE LOOP (.25 MILES)

PLANTING BUFFER

PICKLE BALL COURTS (6)

CONCESSION AREA + BIKE REST STOP

ROLLER RINKS
- (each has 90 people capacity)

PARKING
- (208 parking spots) 69% more than required per code
- permeable paving at parking rows

INTERPRETIVE NATIVE GARDEN + TRAILHEAD

BIKE REST STOP (FOR SART REROUTE)

OVERLOOK

WATER PLAY AREA
RESTROOMS + STORAGE

LEGEND:
 - SART BICYCLE SPEED LIMIT ZONE
 - PEDESTRIAN ACCESS
 - EMERGENCY ACCESS
 - VEHICULAR ACCESS

LEGEND:
 - COTTONWOOD TRAIL
 - FLEX MEADOW
 - GREGORY RD
 - TEQUESQUITE AVE
 - RYAN BERNARDINO OVER

Scale: 240 FT

City of Riverside

RiversideCA.gov

21

TEQUESQUITE NORTH EXTENSION: A HIGH INTEREST IN HABITAT+ WILDLIFE, WALKING TRAILS AND EDUCATIONAL ELEMENTS

CONCESSIONS + BIKE REPAIR

WALKING TRAILS

HABITAT + WILDLIFE AREAS

EDUCATIONAL FEATURES

NATIVE PLANTING

City of Riverside

RiversideCA.gov

22

TEQUESQUITE NORTH EXTENSION: MASTERPLAN

- BIOLOGICAL AVOIDANCE ZONE
- ARROYO WALK GATHERING NODE
-informative signage and seating with shade structures
- ARROYO WALK
-indigenous history of water and the santa ana river
- SANTA ANA RIVER GREENWAY SEPARATED WALKING PATH
(12' wide decomposed granite)

SANTA ANA RIVER BIKE PATH

60 FT

ARROYO WALK GATHERING NODE

ARROYO WALK

NATIVE PLANTING

23

RiversideCA.gov

23

TEQUESQUITE NORTH EXTENSION: MASTERPLAN

- BIKE SPEED LIMIT ZONE
- SART REROUTE
- EQUESTRIAN REST STOP
- FITNESS TRAIL
- .25 mile exercise loop
- PLANTING BUFFER
- BIKE SPEED LIMIT ZONE
- NATIVE PLANTING AREA

SANTA ANA RIVER BIKE PATH

60 FT

EQUESTRIAN REST STOP

FITNESS TRAIL

SANTA ANA GREENWAY (12' WALKING PATH)

24

RiversideCA.gov

24

TEQUESQUITE NORTH EXTENSION: MASTERPLAN

OVERLOOK

SEPARATED WALKING PATH
-12' wide decomposed granite

TRAIL ROUTE

OVERLOOK

BIKE REST STOP

FLEX MEADOW
-half field soccer field

RESTROOMS

PICKLE BALL COURTS

WATER PLAY AREA

SHADED PICNIC AREA

COTTON WOOD TRAIL

SANTA ANA RIVER BIKE PATH

FLEX MEADOW

OVERLOOK

OVERLOOK

WATER PLAY AREA

FLEX MEADOW

CONCESSION AREA HUB

INTERPRETIVE NATIVE GARDEN

PERMEABLE PARKING

TRAILHEAD

PARKING
-208 parking spots with permeable paving at parking rows

60 FT

City of Riverside

RiversideCA.gov

25

25

TEQUESQUITE NORTH EXTENSION: MASTERPLAN

CONCESSION AREA + BIKE REST STOP

PICKLE BALL COURTS

RESTROOMS AND STORAGE

ROLLER RINKS (EACH HAS 90 PEOPLE CAPACITY)

INTERPRETIVE NATIVE GARDEN

TRAILHEAD

PARKING
-208 parking spots with permeable paving at parking rows

CONCESSION AREA HUB

INTERPRETIVE NATIVE GARDEN

PERMEABLE PARKING

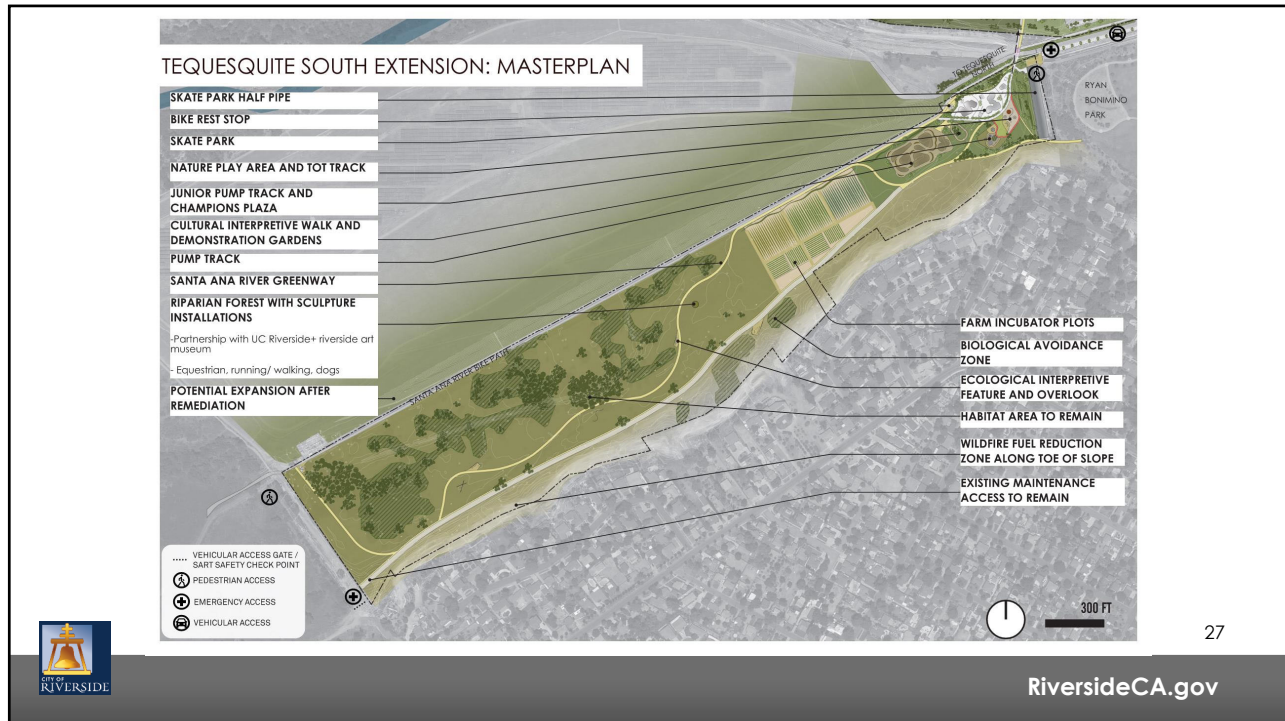
60 FT

City of Riverside

RiversideCA.gov

26

26



27

TEQUESQUITE SOUTH EXTENSION: A HIGH INTEREST IN ACTIVE PROGRAM ELEMENTS AND HABITAT CONSERVATION

SKATE PARK

AGRICULTURAL PLOTS

BIKE PARK

NATURE/CULTURAL INTERPRETIVE TRAIL

HABITAT CONSERVATION

28

RiversideCA.gov

28

TEQUESQUITE SOUTH EXTENSION: MASTERPLAN

- SKAT PARK HALF PIPE
- SKATE PARK
s.m.l options/ areas
- NATURE PLAY AREA
-hot track
-gathering space
- BIKE REST STOP
- CULTURAL INTERPRETIVE WALK AND DEMONSTRATION GARDENS
- JUNIOR PUMP TRACK AND CHAMPIONS PLAZA
- PUMP TRACK

SKATE PARK

JUNIOR PUMP TRACK

CULTURAL INTERPRETIVE WALK

29

RiversideCA.gov

29

TEQUESQUITE SOUTH EXTENSION: MASTERPLAN

- PUMP TRACK
- SANTA ANA RIVER GREENWAY SEPARATED WALKING PATH (12' wide decomposed granite)
- NATIVE PLANTING BUFFER
- FARM INCUBATOR PLOTS
-1 acre and 1/4 acre plots

PUMP TRACK

FARM INCUBATOR PLOTS

NATIVE PLANTING BUFFER

30

RiversideCA.gov

30

TEQUESQUITE SOUTH EXTENSION: MASTERPLAN

SEPARATED WALKING PATH (12' WIDE DECOMPOSED GRANITE)

BIOLOGICAL AVOIDANCE ZONE

RIPARIAN FOREST WITH SCULPTURE INSTALLATIONS
Partnership with UC Riverside+ riverside art museum
Equestrian, running/ walking, dogs

ECOLOGICAL INTERPRETIVE FEATURE AND OVERLOOK

SCULPTURE WALK

ECOLOGICAL INTERPRETIVE FEATURE

WALKING PATHS AROUND HABITAT AREAS

31

RiversideCA.gov

31

TEQUESQUITE SOUTH EXTENSION: MASTERPLAN

BIKE REST STOP
Shaded seating, water fountain, and repair station

SANTA ANA RIVER GREENWAY
separated walking path (12' wide decomposed granite)

BIOLOGICAL AVOIDANCE ZONE

EXISTING VEGETATION TO REMAIN

EXISTING ACCESS ROAD TO REMAIN

BIKE REST STOP

SANTA ANA RIVER GREENWAY

EXISTING VEGETATION

32

RiversideCA.gov

32

MARTHA MCLEAN ANZA NARROWS PARK: MASTERPLAN

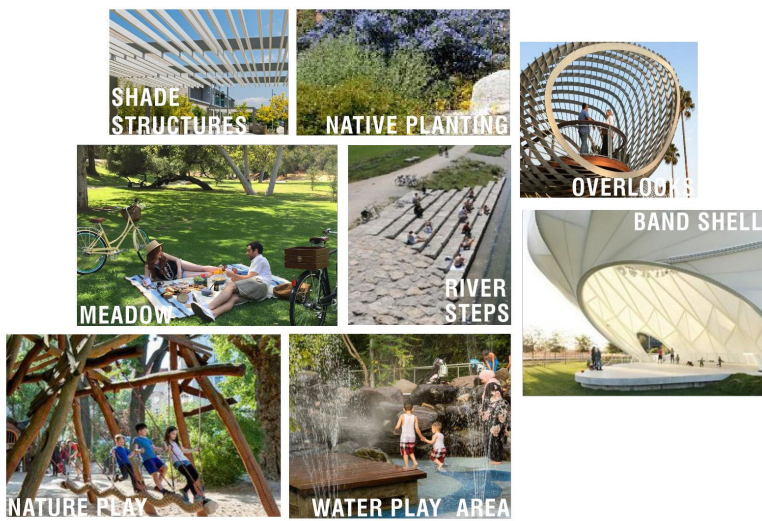


33

RiversideCA.gov

33

MARTHA MCLEAN ANZA NARROWS PARK: A HIGH INTEREST IN EDUCATION, RIVER RELATED ELEMENTS AND VIEWS



34

RiversideCA.gov

34

MARTHA MCLEAN: MASTERPLAN

EXISTING RIVER ACCESS
 SHADED SEATING AREA +
 CROSSWALK TO RIVER ACCESS
 TERRACED HILLSIDE STEPS
 OVERLOOK SEATING AREA
 VEHICULAR ACCESS GATE /SART
 SAFETY CHECK POINT

SANTA ANA RIVER

SANTA ANA RIVER TRAIL

RIDGE TRAIL
 NATIVE POLLINATOR
 PLANTING-
 SEASONALLY SEEDED
 TERRACED RIVER STEPS
 NATIVE PLANT SEEDED
 AREA

50 FT

TERRACED HILLSIDE STEPS

TERRACED RIVER STEPS

NATIVE POLLINATOR GARDENS

35

RiversideCA.gov

35

MARTHA MCLEAN: MASTERPLAN

BIKE REST STOP
 - Bike parking, bottle
 filling station, repair
 station, seating
 RIVERS & LAND
 CONSERVANCY
 NATIVE PLANT GARDEN
 TO REMAIN
 TERRACED RIVER STEPS
 LANDSCAPE BUFFER
 AND SCREENING

SANTA ANA RIVER TRAIL

COMMUNITY MEADOW
 SHADED OVERLOOK
 SHADED SEATING
 AREA
 EDUCATIONAL WATER
 PLAY ARROYO
 WILDLIFE + HABITAT
 EXPLORATION TRAIL
 PLAY SPACE
 OUTDOOR CLASSROOM
 RESTROOMS (WITH
 SHOWERS) + STORAGE
 RE-ALIGNED PARKING
 AREA (48 SPOTS)

50 FT

SHADED OVERLOOK

PLAY SPACE

EDUCATIONAL WATER PLAY ARROYO

36

RiversideCA.gov

36

MARTHA MCLEAN: MASTERPLAN

SEPARATED WALKING PATH

BAND SHELL AND COMMUNITY MEADOW
NATIVE POLLINATOR PLANTING

VEHICULAR BARRIER ALONG PEDESTRIAN WALK

BIKE REST STOP
-Bike parking, bottle filling station, signage, shaded seating, bike repair station, exercise equipment

SANTA ANA RIVER TRAIL

50 FT

BAND SHELL

COMMUNITY MEADOW

BIKE REST STOP FILLING STATION

37

RiversideCA.gov

37

MARTHA MCLEAN: MASTERPLAN

VEHICULAR ACCESS GATE /SART SAFETY CHECK POINT

VEHICULAR BARRIER ALONG PEDESTRIAN WALK

SANTA ANA RIVER TRAIL

50 FT

STORMWATER RAIN GARDEN

NATIVE PLANTING BUFFER ALONG ROAD

RIVER SWINGS AND OVERLOOK

TRAILHEAD + RESTROOM

VEHICULAR ACCESS GATE /SART SAFETY CHECK POINT

PROPOSED PARKING AREA WITH CONTROLLED VEHICULAR ENTRANCE TO BIKE PATH (27 NEW SPOTS)

RIVER SWINGS

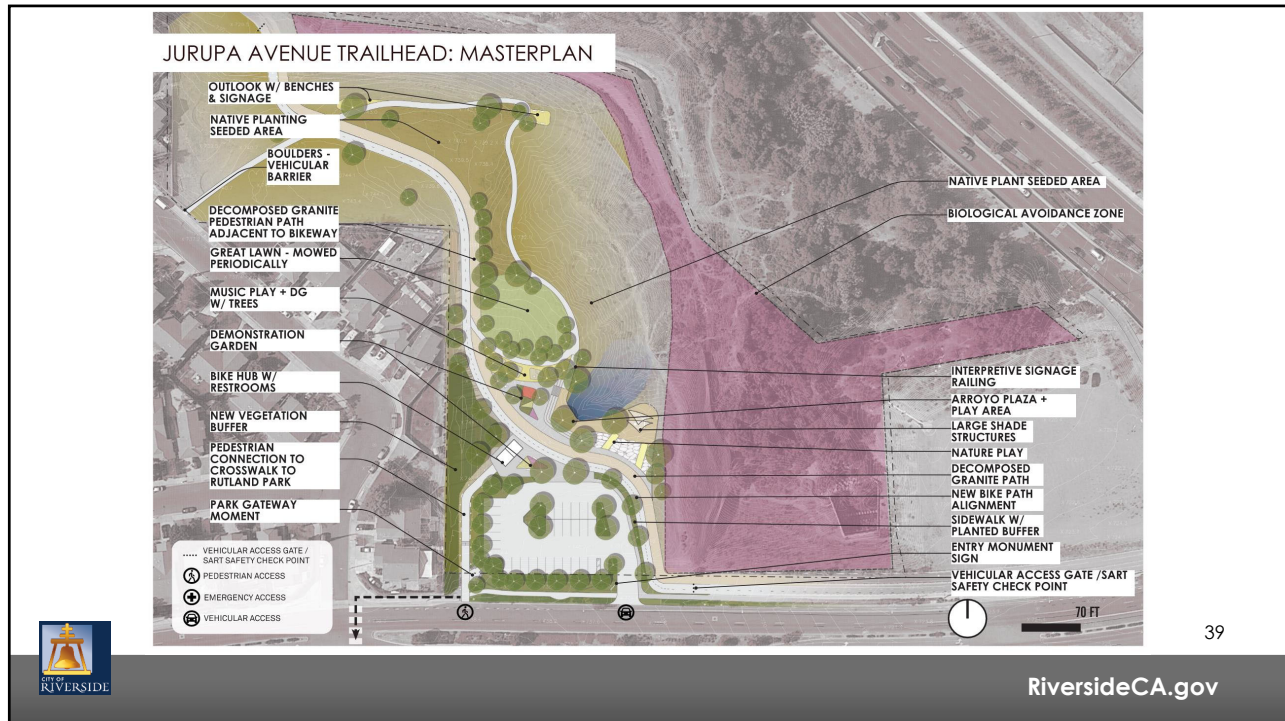
SHADED PARKING

STORMWATER MANAGEMENT RAIN GARDEN

38

RiversideCA.gov

38



39



40

STRATEGIC PLAN ALIGNMENT

Strategic Priority 1 – Arts, Culture and Recreation:

- Goal 1.3: improve parks, recreational amenities, open space, and trail development, and fulfill critical lifecycle and facility maintenance needs
- Goal 1.4: to prioritize safety at parks, trails, arts, cultural and recreational facilities

Strategic Priority 2 – Community Wellbeing:

- Goal 2.3: strengthen neighborhood identities and improve community health and the physical environment through amenities and programs that foster an increased sense of community and enhanced feelings of pride and belonging citywide

Strategic Priority 4 – Environmental Stewardship:

- Goal 4.5: Maintain and conserve 30% of Riverside's natural lands in green space including, but not limited to, agricultural lands and urban forests in order to protect and restore Riverside's rich biodiversity and accelerate the natural removal of carbon, furthering our community's climate resilience, and

Strategic Priority 5 – High Performing Government:

- Goal 5.3: enhance communication and collaboration with community members to improve transparency, build public trust, and encourage shared decision-making.

Cross-Cutting Threads



Community Trust



Fiscal Responsibility



Sustainability &
Resiliency



Equity



Innovation



41

RiversideCA.gov

41

RECOMMENDATIONS

That the City Council:

1. Authorize fund transfer of \$50,000 from the Regional Park Special Capital Improvement (413) Fund account 0000413-340345 and transfer funds in the same amount to the Santa Ana River Coastal Conservancy account 9339910-440305;
2. Authorize 20% change order authority of \$392,736.36 not to exceed total compensation amount of Two Million Three Hundred Fifty-Six Thousand Four Hundred Eighteen Dollars (\$2,356,418) for Professional Consultant Services Agreement with MLA Green, Inc. dba Studio-MLA of Los Angeles, California, for the River-side Gateway Parks Project Suite – Planning & Design for Park Master Plan and California Environmental Quality Act Services for Park, Trail, and Greenway Improvements;



42

RiversideCA.gov

42

RECOMMENDATIONS

3. Approve agreement amendment to increase compensation to not to exceed Two Million Three Hundred Fifty-Six Thousand Four Hundred Eighteen Dollars (\$2,356,418) and extend contract term to June 30, 2024; and
4. Authorize the City Manager, or designee, to execute the Professional Consultant Services Agreement Amendment with MLA Green, Inc. dba Studio-MLA including making minor and non-substantive changes.



43

RiversideCA.gov