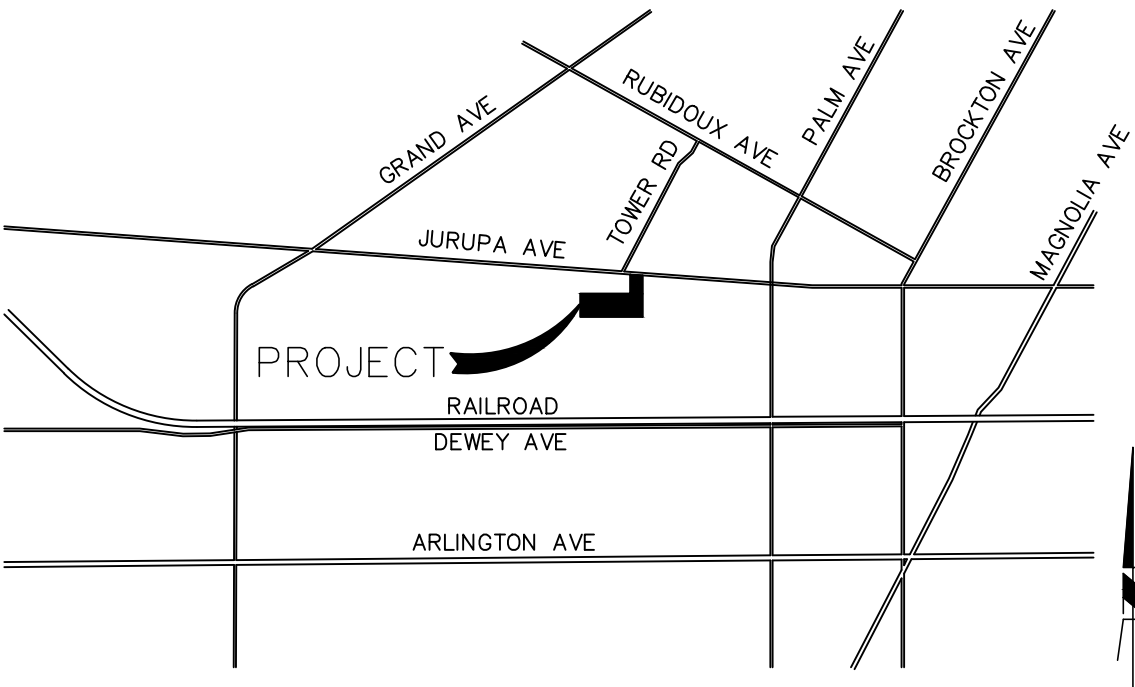


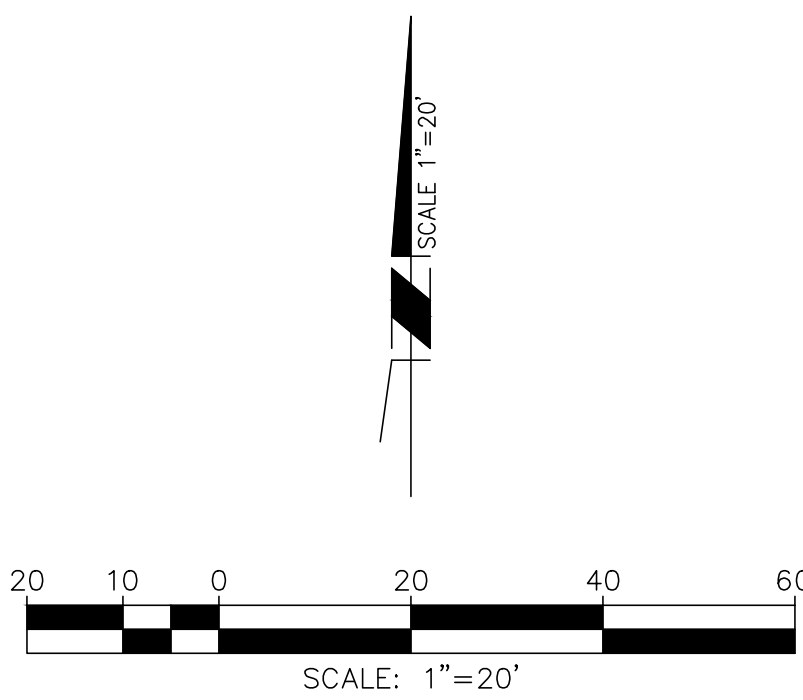
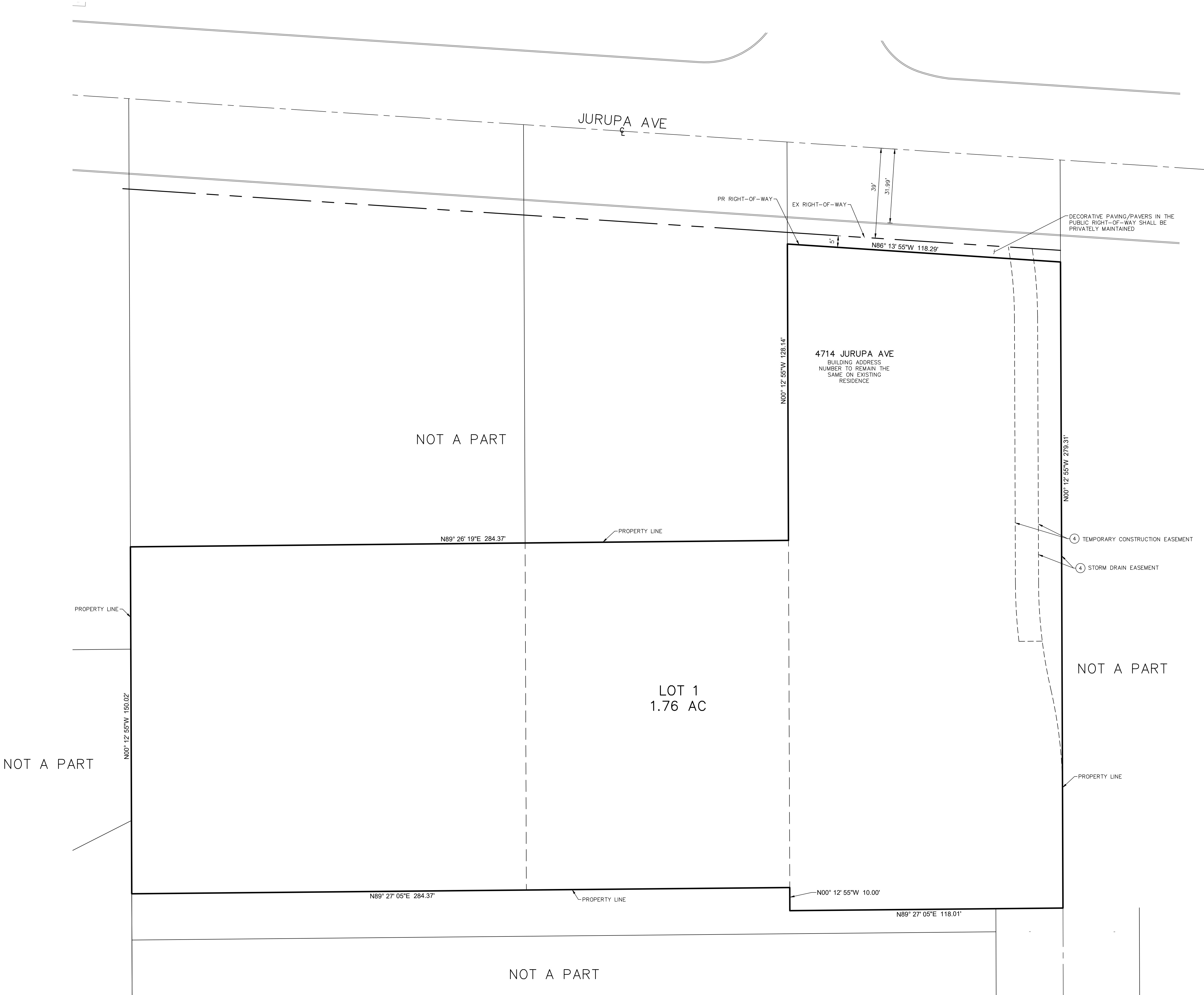
TENTATIVE TRACT MAP NO. 39277

FOR CONDOMINIUM PURPOSES

IN THE CITY OF RIVERSIDE
COUNTY OF RIVERSIDE, STATE OF CALIFORNIA



VICINITY MAP
SCALE: NTS

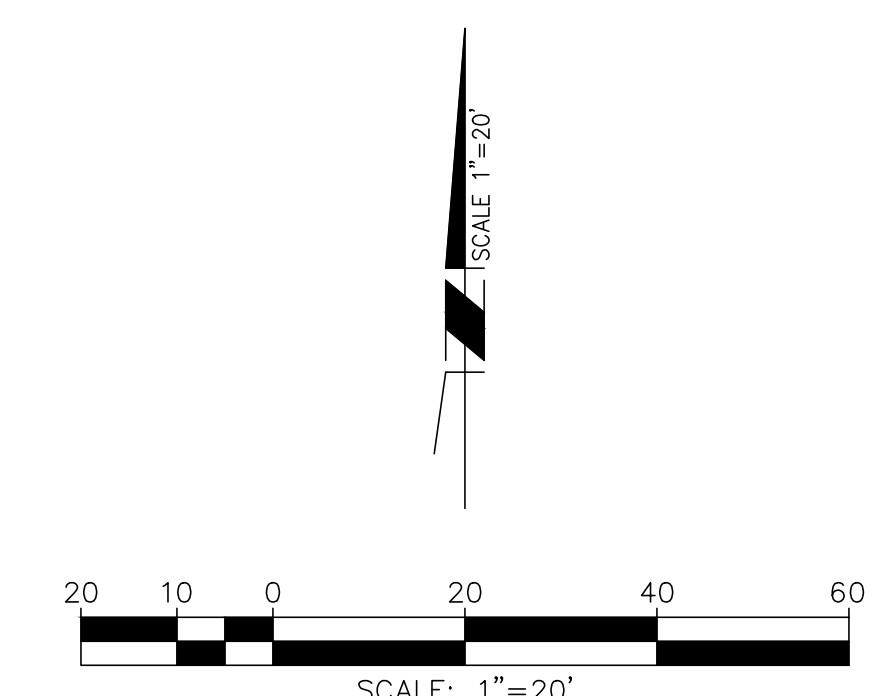


PC-2025-00085 (TTM)
Exhibit 6 - Tentative Tract Map No. 39277

				BENCHMARK		BASIS OF BEARINGS		<div><div>SEAL</div><div>PROFESSIONAL CIVIL ENGINEER No. 68795 STATE OF CALIFORNIA</div></div> <div>DESIGNED BY: CPK CHECKED BY: RSA APPROVED BY: RSA</div> <div> 7/8/2025</div>	TTM NO. 39277		SHEET NO. TTM SHEET 1 of 1
				DESCRIPTION: P.20 NAIL AND CITY ENGINEER TAG IN THE SOUTHEASTLY CORNER OF A CATCH BASIN IN THE NORTHERLY CURB OF JURUPA AVENUE, 37 FEET WESTERLY OF STEARNS STREET. ELEV: 787.128'		THE CENTERLINE OF COVER STREET N89°28'00"E PER THE HARTSOUGH SUBDIVISION M8023-042.			TENTATIVE TRACT MAP NO. 39277		
									PREPARED FOR MONTE VISTA HOMES		

SCALE: 1" = 20'
GROSS AREA: +/- 1.76 AC
CONTOURS: 1 FOOT
TOTAL LOTS: 1 NUMBERED
TOTAL UNITS: 25 CONDOMINIUMS

IN THE CITY OF RIVERSIDE
COUNTY OF RIVERSIDE, STATE OF CALIFORNIA



SALE: 1* = 20'
 GROSS AREA: +/- 1.76 AC
 CONTOURS: 1 FOOT
 TOTAL LOTS: 1 NUMBERED
 0 LETTERED
 TOTAL UNITS: 28 CONDOMINIUMS

[illegible]

BENCHMARK	
DESCRIPTION:	P.K. NAIL AND CITY ENGINEER TAG IN THE SOUTHEASTERLY CORNER OF A CATCH BASIN IN THE NORTHERLY CURB OF JURUPA AVENUE, 37 FEET WESTERLY OF STEARNS STREET.
ELEV: 787.128'	

BASIS OF BEARINGS
THE CENTERLINE OF COVER STREET
N89°26'00"E PER THE HARTSOUGH
SUBDIVISION MB023-042.



	DRAWN BY:	CPK
	DESIGNED BY:	CPK
	CHECKED BY:	RSA
	APPROVED BY:	RSA

P. H. Austin

7/8/2025

TTM NO. 39277		SHE
description		
TENTATIVE TRACT MAP NO. 39277		
prepared for		SHE
MONTE VISTA HOMES		

PTM

$$1 \leq 1$$