



## STATUS UPDATE REPORT ON PUBLIC UTILITIES RENEWABLE ENERGY PROCUREMENT ACTIVITIES: SUNZIA WIND PROJECT

### Public Utilities Department

#### Mobility & Infrastructure Committee

October 12, 2023

RiversideCA.gov

1

## LEGISLATIVE HISTORY

1. SB X1-2 adopted by CA Legislature in 2011
  1. Mandated a 20% RPS by 2013, 25% by 2016, 33% by 2020
2. SB 350 adopted by CA Legislature in 2015
  1. Mandated a 50% RPS by 2030
3. SB 100 adopted by CA Legislature in 2018
  1. Raised 2030 RPS target to 60%
  2. Set new targets of 44% RPS by 2024, 52% by 2027, 60% by 2030
  3. 100% clean energy by 2045
  4. Note: *Envision Riverside 2025 Strategic Plan* accelerated Riverside's 100% clean energy goal to 2040



2

RiversideCA.gov

2

## BACKGROUND

1. Since 2012, RPU has contracted for 12 renewable energy resources; 11 of these are currently on-line and providing power to Riverside residents.
2. City currently receives energy from 2 Geothermal portfolios, 2 Wind resources, 7 Solar PV resources.
3. These resources typically provide ~ 950,000 MWh/year of green energy to the City.



3

RiversideCA.gov

3

## BACKGROUND

1. Early 2021 - staff identified a future, out-of-state wind project proposal
2. Supply Riverside with enough additional cost-effective renewable energy to exceed its 60% RPS by 2030 mandate three years early
3. Qualifies as a Portfolio Content Category 1 (PCC-1) renewable resource
  - a. Dynamically scheduled into the CAISO beginning in April 2026,
4. Project will deliver between 369,000 to 390,000 MWh/year of long-term PCC-1 renewable energy to Riverside.



4

RiversideCA.gov

4

# SUNZIA WIND AND TRANSMISSION OVERVIEW

## Wind

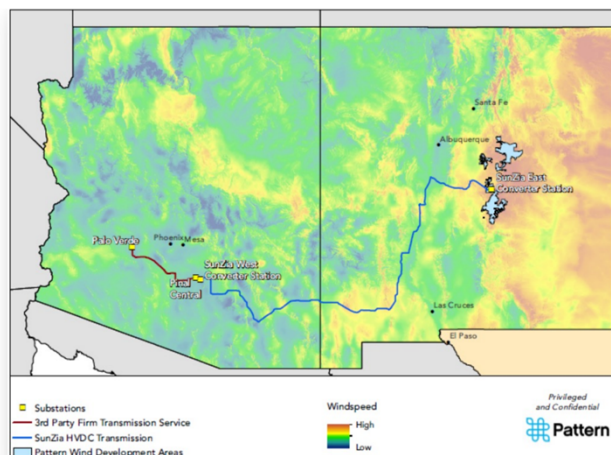
- ~3,400 MW
- ~44.5% NCF
- 100% PTC qualified
- RPS PCC1 (dynamically scheduled)

## Transmission

- 3,000 MW, 525kV DC line, ~550 miles
- Physical delivery:
  - Pinal Central (SRP, TEP, WAPA)
- Long Term Firm transmission to CA
  - Palo Verde

## Jointly Financed and Constructed

- NTP: 1H 2023
- COD: 2H 2025



## Overview of PPSA

RPU Contract  
Capacity: 125 MW

Target COD:  
March 31, 2026

Delivery Point:  
Palo Verde

Delivery Method:  
Dynamic

Delivered Energy:  
369,000 to 390,000  
MWh/year



5

RiversideCA.gov

5

## DISCUSSION

### Current RPS Projections through 2030

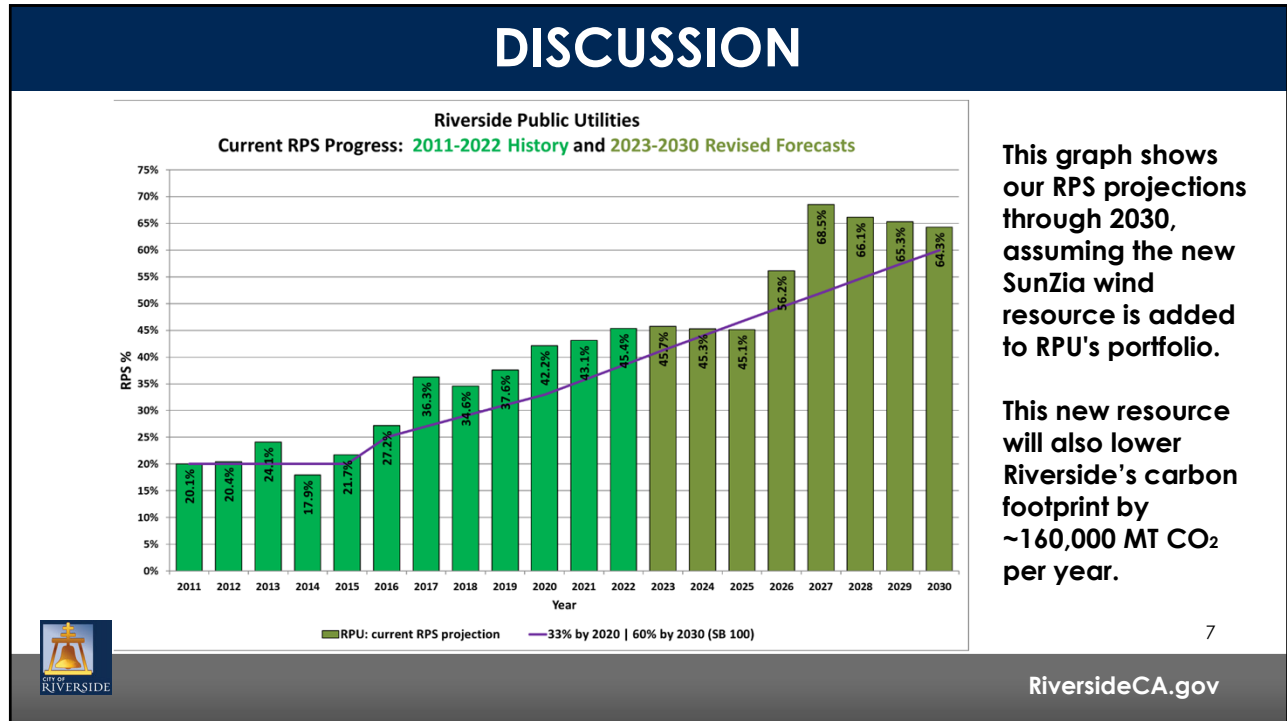
1. RPU served **43.1%** of retail load using renewable energy in 2021.
2. RPU served **45.4%** of retail load using renewable energy in 2022.
3. RPU's projected RPS levels through 2030 is shown on the next slide (with the new SunZia wind resource included in our generation portfolio).



6

RiversideCA.gov

6



7

## STRATEGIC PLAN ALIGNMENT

### Strategic Priority 4 - Environmental Stewardship

**Goal 4.1** - Rapidly decrease Riverside's carbon footprint by acting urgently to reach a zero-carbon electric grid with the goal of reaching 100% zero-carbon electricity production by 2040 while continuing to ensure safe, reliable, and affordable energy for all residents.

**Goal 4.6** - Implement the requisite measures to achieve citywide carbon neutrality no later than 2040.

---

### Cross-Cutting Threads

Community Trust

Fiscal Responsibility

Sustainability & Resiliency

Equity

Innovation

RiversideCA.gov

8

## RECOMMENDATION

That the Mobility & Infrastructure Committee receive and file this status update report on the Public Utilities Department's recent renewable energy procurement activities.



9

RiversideCA.gov