

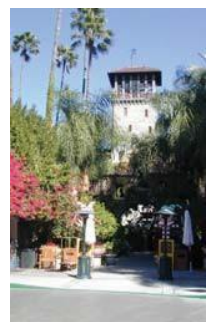
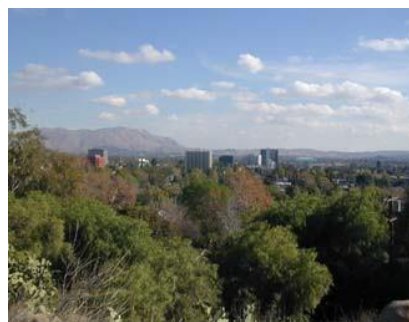
City of Riverside, California

DOWNTOWN SPECIFIC PLAN

Adopted November 2002

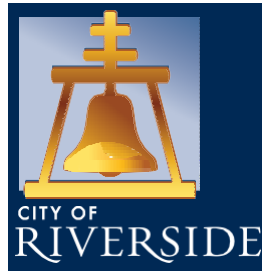
Last Amended May 2017=

Amended May 2025



DOWNTOWN SPECIFIC PLAN

City of Riverside, California



November, 2002

GP-004-012

Adopted by Ordinance No. 6638 11-12-02

Ordinance No. 6641 11-19-02

Resolution No. 20323 12-10-02

Revised to Include Amendments

1st Amendment P05-0123 Resolution 21034 Adopted 9-6-05

Off-Sales at Gas Stations in DSP-JC

2nd Amendment P05-0973 Resolution 21145 Adopted 3-28-06

Multi-Family Residences Above Ground Floor in DSP-RC

3rd Amendment P05-1050 Resolution 21146 Adopted 3-28-06

Restaurant Size in DSP-MSD

4th Amendment P13-0211 Resolution 22692 Adopted 5-20-14

*Remove 22.5 acres from Health Care District concurrent with Adoption of
Riverside Community Hospital Specific Plan*

5th Amendment P16-0124 Resolution 23090 Adopted 9-27-16

*Revised definition of Floor Area Ratio, maximum heights in DSP-RC, DSP-JC, and DSP-PPO,
and additional amenities with CUP in DSP-RC and DSP-JC*

6th Amendment P16-0854 Resolution 23175 Adopted 5-16-17

*Revised uses in DSP-RC and DSP-JC which included Assemblies of People-Entertainment
and Non-Entertainment, Brewery Uses, Mixed Use, and Retail Sales*

7th Amendment ###-#### Resolution ##### Adopted 00-00-00

Remove 0.8 acres from Downtown Specific Plan concurrent with Adoption of Riverside
Community Hospital Specific Plan

Original Draft Prepared by: The
Arroyo Group

In consultation with:

Cotton/Bridges/Associates Keyser

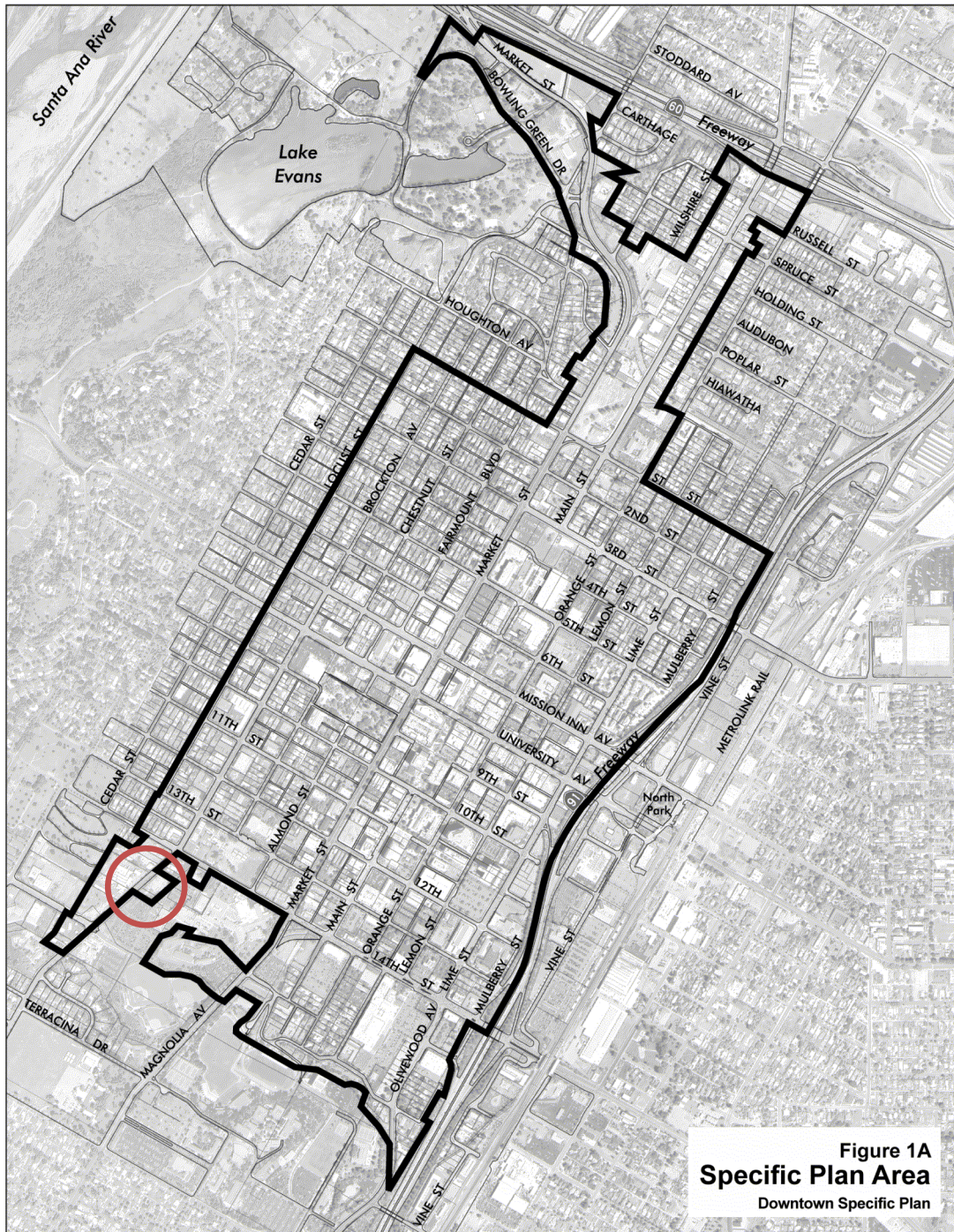
Marston Associates, Inc.

The Mobility Group

EPT Design

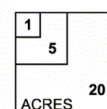
Myra L. Frank & Associates, Inc.

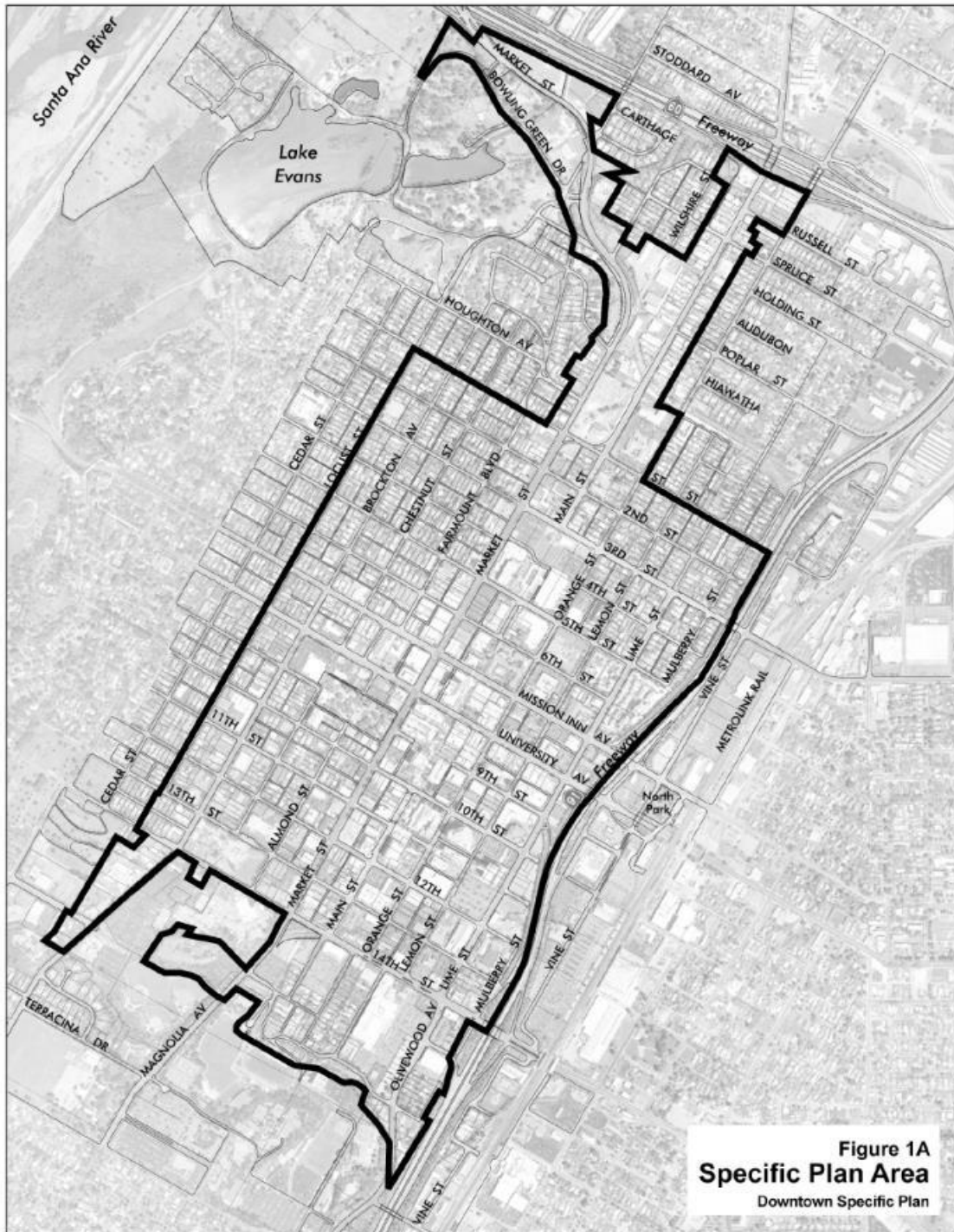
Isenberg & Associates, Inc.



LEGEND

— Downtown Specific Plan Boundary
(Revised May 2014)





LEGEND

— Downtown Specific Plan Boundary
(Revised March 2025)

