



November 10, 2021

To: Pamela Galera, Parks, Recreation & Community Services Director

From: Todd M. Corbin, Public Utilities General Manager

RE: Memorandum of Understanding for the Monitoring and Maintenance Responsibilities of the Gage Canal Multi-Purpose Recreational Trail

Purpose:

This Memorandum of Understanding (MOU) is by and between the City of Riverside Public Utilities Department, Water Division (RPU), and the Parks, Recreation and Community Services Department (PRCSD) to document (1) the responsibilities for the monitoring and maintenance of the City's operation of the Gage Canal Multi-Purpose Recreational Trail (Trail) along the Gage Canal right-of-way (ROW), from Blaine Street to Palmyrita Avenue and (2) the sharing of costs for such activities between RPU and PRCSD. RPU ratepayer funds cannot be used for General Fund activities, or for any costs associated with the operation of the Trail, or any liabilities arising from Trail operations. Any area not improved by the Trail project or subject to use from Trail operations, or by users of the Trail, will remain the monitoring and maintenance responsibility of RPU.

Background:

On October 1, 2019, the City Council adopted a resolution authorizing the submission of a grant application for the California Natural Resources Agency Urban Greening Grant Program in the amount of \$3,708,509 for the design and implementation of the Gage Canal Multi-Purpose Recreational Trail Phase I.

On April 1, 2020, the City of Riverside entered into an agreement with the State of California Natural Resources Agency for the Gage Canal Multi-Purpose Recreational Trail Phase I in the amount of \$3,708,509.

The Gage Canal ROW is typically a fifty-foot-wide swath of property along which the old Gage Canal used to run. This ROW now contains an underground pipeline that runs from Tippecanoe Avenue in San Bernardino to Linden Street in Riverside. The Gage Canal ROW was acquired by the City in 1965. RPU is currently responsible for the monitoring and maintenance of this ROW from San Bernardino to Linden Street in Riverside. The Trail project will utilize the segment of ROW between Blaine Street and Palmyrita Avenue in Riverside as outlined in brown on Exhibit A.

The new Trail improvements will include a paved bike trail, a decomposed granite walking trail, trees on either side of the Trail, additional Trail landscaping and irrigation improvements, information and exercise stations, rest areas, drinking fountains, solar lighting, and trash receptacles. The trees will be irrigated for several years until they are established, at which time the irrigation will be turned off.

In 1976, and as part of the First Amendment to the Agreement for Operation of Gage Canal Facilities, the segment of ROW between Blaine Street and Watkins Drive was utilized for a paved bike and pedestrian path (Bike Trail Path), which has been maintained by the Public Works Streets division (PWD). The maintenance of the Bike Trail Path between Blaine Street and Watkins Drive will remain the responsibility of the PWD once the new Trail improvements are completed. This segment is identified within the red box on Exhibit A.

Responsibilities:

The parties of this MOU acknowledge that operation and use of this Trail will create activities within the old Gage ROW that have historically been off limits to pedestrian use. Such use will create the need for regular monitoring and maintenance of the Trail area. The PRCSD will monitor the segment of ROW being used for the Trail at a minimum of twice per week. The scope of maintenance is to include the entire width of the ROW, including the portion occupied by the Trail, between Blaine Street and Palmyrita Avenue. The maintenance tasks will include all Trail maintenance and repair; trash, litter, and homeless encampment removal; tree maintenance and related debris removal; weed abatement; irrigation system maintenance and repair; graffiti removal; removal of any dumping; resolutions of any drainage issues resulting from Trail improvements; response to any 311 calls arising from Trail operations; any damages to fences along the Trail; damages caused by unauthorized access into the Trail area; and any other issues resulting from the use of the Trail. Any claims resulting from the use of the Trail will be the responsibility of the PRCSD.

PRCSD will retain a qualified contractor to perform the regular maintenance of the Trail and entire ROW from Blaine to Palmyrita. The contractor will be selected through the City's established competitive procurement process. All costs associated with the regular monitoring, maintenance, irrigation, and operation of the improved areas of the Trail will be paid by the PRCSD. RPU and PRCSD agree that the Trail improvements occupy 91.36% of the ROW and that PRCSD will pay for 91.36% of the maintenance costs of the contractor. RPU will be responsible for 8.64% of those maintenance costs, not to exceed \$10,000 annually. PRCSD and PWD will be responsible for all maintenance costs associated with the segment of ROW between Blaine Street to Watkins Drive.

RPU and Gage Canal Company staff shall have the right to access the Trail areas between Palmyrita Avenue and Blaine Street. RPU will be responsible for the upkeep and maintenance of the underground water pipelines and any appurtenances along this ROW. RPU has the right to close portions of the Trail to public access when any maintenance work is required. Any closures would be mitigated to the extent possible and RPU will notify the PRCSD anytime a Trail closure is required. If any damage occurs to the Trail improvements because of required work on the pipelines or appurtenances, RPU will only be responsible for the completion of the required work and backfilling to previous surface grade. The PRCSD will be responsible to make any necessary remedial repairs or replacements to any Trail improvements that may have been damaged from the work.

Summary:

The parties of this MOU agree that the PRCSD will take the lead role in the regular and ongoing monitoring and maintenance of the Trail area between Blaine Street and Palmyrita Avenue across the entire width of the ROW. Exhibit A illustrates the segment of the ROW to be utilized for the Trail between Blaine Street and Palmyrita Avenue.

Executed on: _____

By and between:

Pamela Galera
Parks, Recreation & Community Services Director

Todd M. Corbin
Public Utilities General Manager

Concurs with:

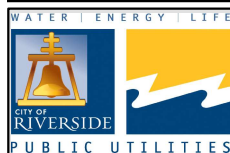
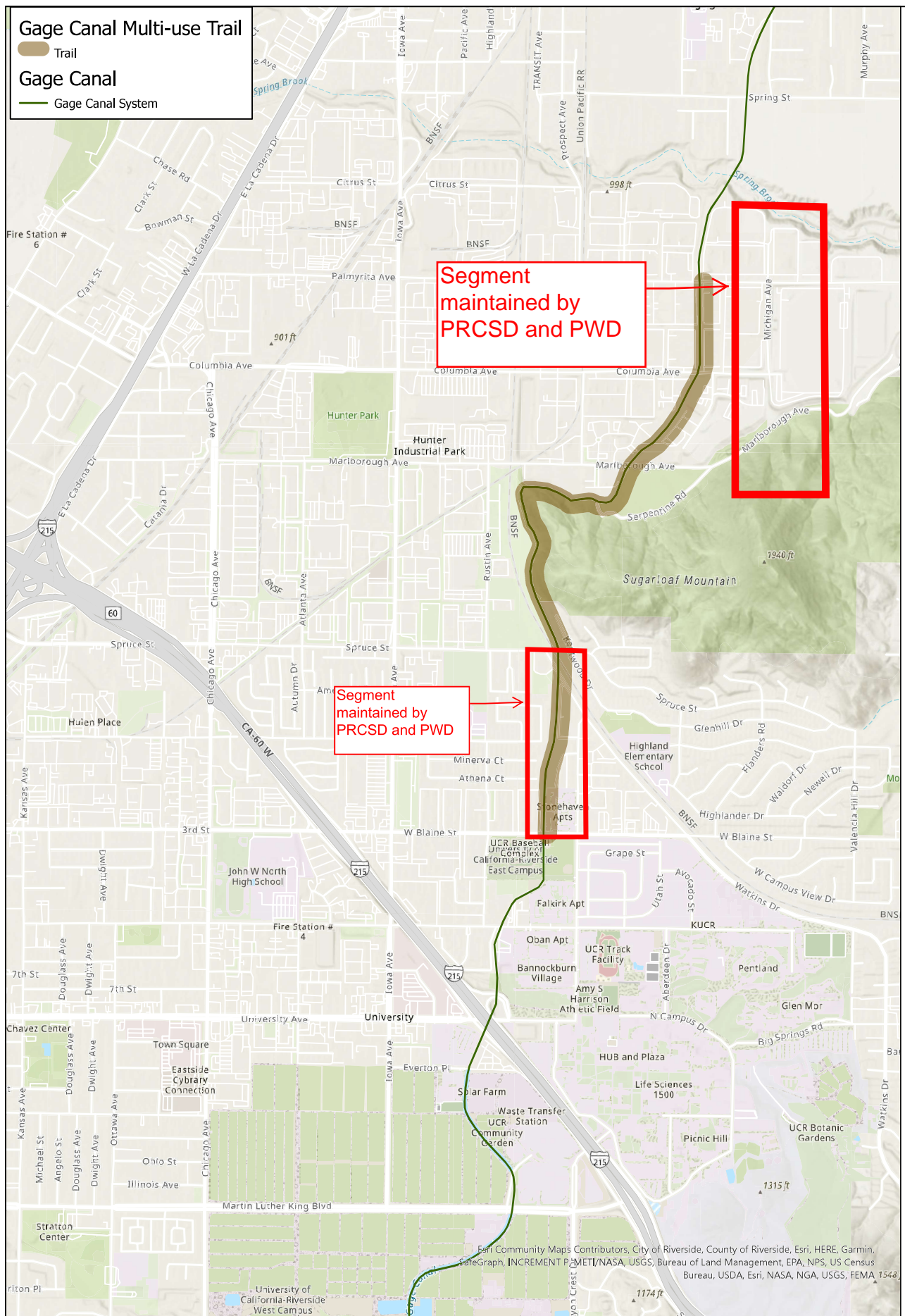
Gilbert Hernandez
Interim Public Works Director

Al Zelinka
City Manager

Attachments: Exhibit A – Site Map

Gage Canal Multi-use Trail

- Trail
- Gage Canal
- Gage Canal System



Gage Canal Multi-use Trail SITE MAP

EXHIBIT A - SITE MAP

Disclaimer: The GIS data represented on this map provides a visual display of data for your convenience. Every reasonable effort has been made to assure the accuracy of the maps and associated data. The City of Riverside shall assume no liability for any decisions made or actions taken or not taken by the user of the applications in reliance upon any information or data furnished hereunder.

Last Updated: 7/22/2021

1 inch = ~0.4 miles

0 0.25 0.5 1 Miles