



# ANNUAL WATER SUPPLY AND DEMAND ASSESSMENT

## Public Utilities

### Board of Public Utilities

May 9, 2022

RiversideCA.gov

## BACKGROUND

1. The California Water Code Section 10632.1 requires that urban water suppliers prepare an Annual Assessment and submit an Annual Shortage Report to the California Department of Water Resources (DWR) by July 1 of every year starting in 2022 and every year thereafter.
2. The Annual Assessment and associated Annual Shortage Report are to be conducted by water agencies based on the procedures detailed in their adopted Water Shortage Contingency Plan (WSCP) and the recommendations provided by the DWR Annual Water Supply and Demand Assessment (AWSDA) Guidance.
3. The Annual Water Supply & Demand Assessment (AWSDA) draft Guidance was published on March 2022, but the final Guidance has not yet been released by DWR.



2

RiversideCA.gov

## BACKGROUND

The purpose of the Annual Assessment is to:

1. Evaluate its water supply reliability for the current year and one dry year and;
2. Generate and submit an Annual Shortage Report on the Annual Assessment and results regarding their anticipated shortages to DWR by July 1 every year starting July 1, 2022.



3

[RiversideCA.gov](http://RiversideCA.gov)

## DISCUSSION

### **Riverside's Available Water Supply Projection in 2022-2023:**

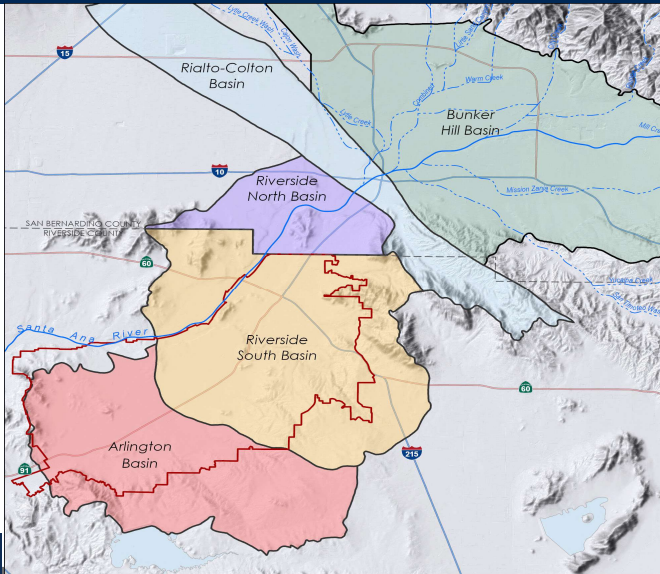
1. RPU's Annual Assessment reflects the available water supply from groundwater extraction rights in the San Bernardino Basin Area (SBBA), Riverside Basin, and the Rialto-Colton Basin, as shown on the next slide;
2. RPU also has an agreement with Western Municipal Water District (WMWD) to access up to 21,700 Acre Feet per Year (AFY) of imported water; and
3. Recycled water for non-potable uses which is supplied from the City of Riverside Regional Water Quality Control Plant that satisfies the need of up to 800 AFY.



4

[RiversideCA.gov](http://RiversideCA.gov)

## CURRENT WATER SUPPLIES



### Extraction/Export Rights

#### Bunker Hill

- 55,263 AFY Export

#### Colton

- 2,728 AFY Export

#### Riverside North

- 10,902 AFY Export

#### Riverside South

- 16,880 AFY Extraction

**85,773 AFY Total**

5

RiversideCA.gov

## PROJECTED WATER SUPPLIES

		22/23
Water Supply	Additional Detail on Water Supply	Reasonably Available Volume
Groundwater	Bunker Hill	55,263
Groundwater	Riverside North	10,902
Groundwater	Riverside South	16,880
Groundwater	Rialto-Colton	2,728
Recycled water	RWQCP	800
Purchased or Imported Water	From WMWD	21,700
-	Total:	108,273

6

RiversideCA.gov

## ACTUAL CUSTOMER WATER USE

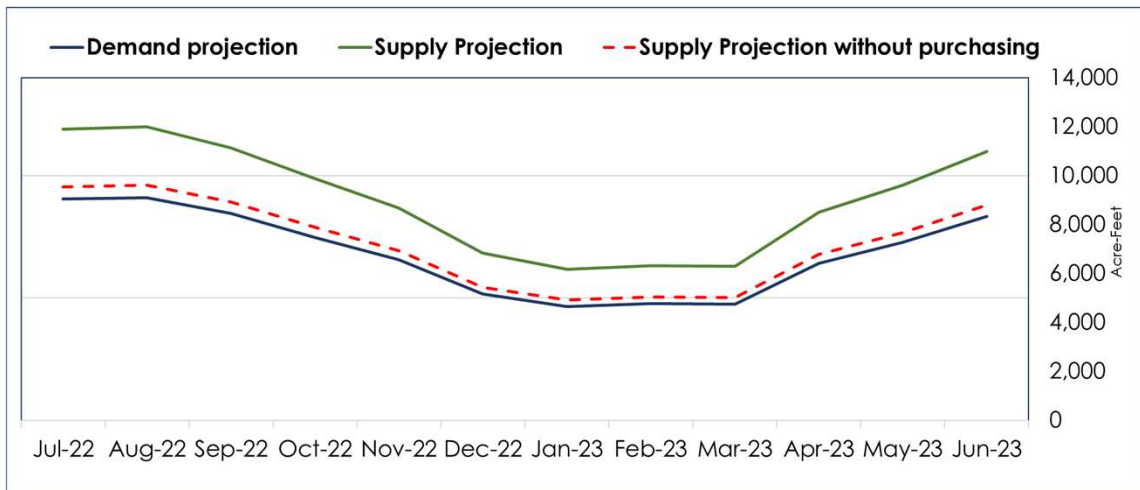
	2016	2017	2018	2019	2020	2021
Potable and Raw Water	76,619	81,017	82,143	73,127	81,197	80,511
Recycled Water Demand	177	187	187	143	141	174
Total Water Use:	76,796	81,204	82,330	73,270	81,338	80,685



7

RiversideCA.gov

## PROJECTED WATER SUPPLY VS. WATER DEMAND



8

RiversideCA.gov

## RIVERSIDE'S WATER DEMAND IN 2022 AND 2023

The total potable and non-potable monthly water demand projections for RPU from July 2022 to June 2023 is estimated:

1. By adding all the next year's projected water needs for all demand categories.
2. Based on the monthly projected weather and growth.



9

RiversideCA.gov

## REQUIRED SUBMITTALS TO DWR FOR THE AWSDA

Status Completion of RPU's AWSDA Required Submittal

	The Annual Water Supply and Demand Assessment Report Topic	
Table 1	Annual Assessment Information	Completed
Table 2	Key Data - Demands, containing estimated unconstrained demand from July – June of next year	Completed
Table 3	Key Data - Supplies, containing estimated available supplies from July – June of next year	Completed
Table 4	Annual Water Shortage Assessment, showing a summary of monthly supply/demand balances as well as shortages and results of planned actions.	Completed
Table 5	Planned Water Shortage Response Actions, containing information on planned water shortage response actions (if any)	Completed
RPU Methodology	Optional attachments to include details on the implementation of the procedures that took place this year. Information may include descriptions of the steps followed, data sources considered, methodologies used, and the decision-making process	Completed

10



RiversideCA.gov

## STRATEGIC PLAN ALIGNMENT



### Priority No. 4 Environmental Stewardship

Goal No. 4.2 – Sustainably manage local water resources to maximize reliability and advance water reuse to ensure safe, reliable, and affordable water to our community.

### Cross-Cutting Threads



Community Trust



Fiscal Responsibility



Sustainability &  
Resiliency



Equity



Innovation



11

RiversideCA.gov

## RECOMMENDATIONS

That the Board of Public Utilities:

1. Approve the Riverside Annual Water Supply and Demand Assessment; and
2. Recommend that the City Council adopt the Riverside Annual Water Supply and Demand Assessment.



12

RiversideCA.gov