

STORM DRAIN MAINTNENACE UPDATE

Public Works Department

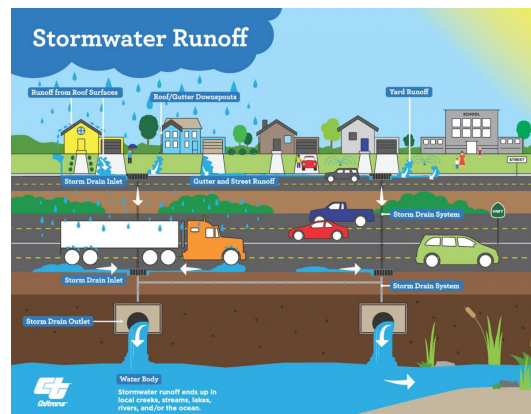
Mobility & Infrastructure Committee
May 12, 2022

RiversideCA.gov

1

BACKGROUND

1. Public Works Department maintains a storm drain system consisting of over 5,000 catch basins and 190 miles of pipes
2. Part of a broader stormwater program required by the State Water Board



RiversideCA.gov

2

BACKGROUND



1. Only ≈ 30 days of rainfall per year
2. But there is urban runoff entering the storm drain system every day
3. Runoff carries with it a variety of pollutants

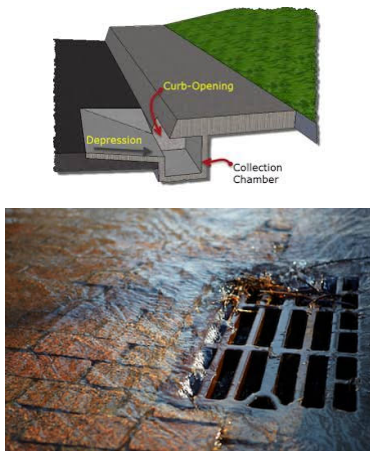


3

RiversideCA.gov

3

CATCH BASINS/INLETS



4

RiversideCA.gov

4

EQUIPMENT



5

RiversideCA.gov

5

GIS MAPS



6

RiversideCA.gov

6

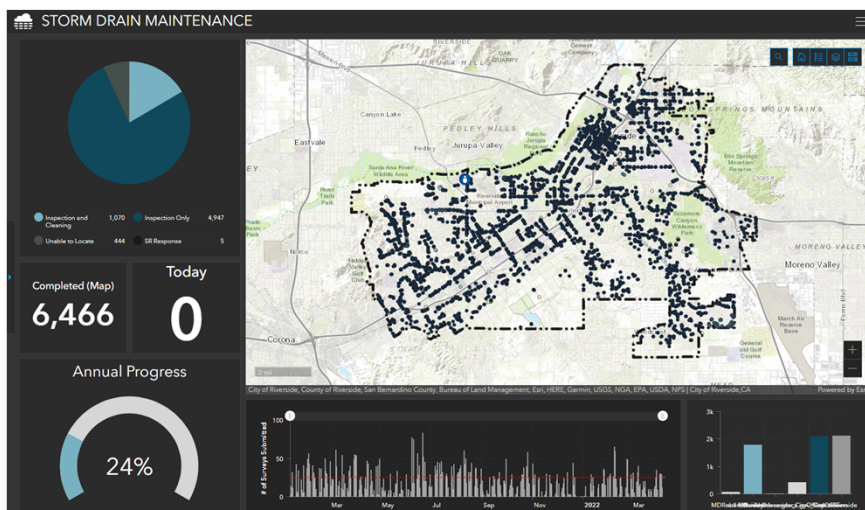
GIS BASED SURVEY/QUESTIONNAIRE



RiversideCA.gov

7

PROGRAM STATISTICS

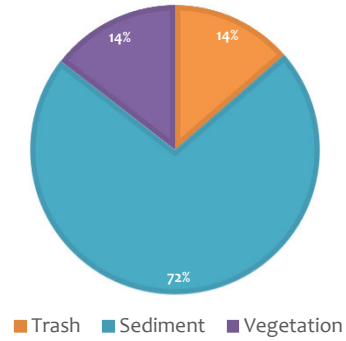


RiversideCA.gov

8

WASTE COLLECTED IN 2021

1. Trash : 45,578 lbs
2. Vegetation: 48,454 lbs
3. Sediment: 240,458 lbs

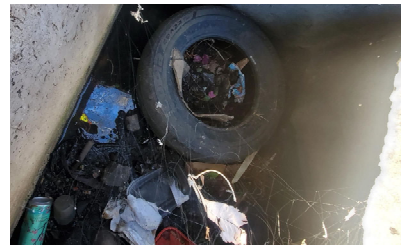


9

RiversideCA.gov

9

TRASH

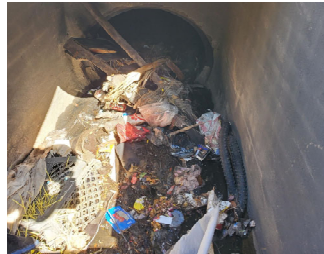


10

RiversideCA.gov

10

TRASH/DUMPING



11

RiversideCA.gov

11

VEGETATION



12

RiversideCA.gov

12

SEDIMENT



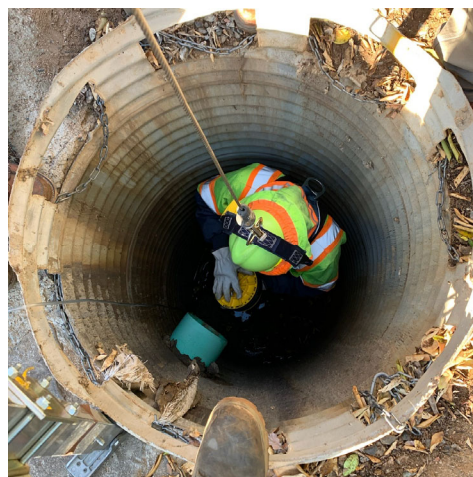
13

RiversideCA.gov

13

CHALLENGES/GOALS

1. GIS/Mapping Updates
2. Equipment
3. Field Office/Equipment Storage
4. State Trash Amendments



14

RiversideCA.gov

14

STRATEGIC PLAN ALIGNMENT

Strategic Priority No. 4 – Environmental Stewardship & Strategic Priority No. 6 – Infrastructure, Mobility, and Connectivity

Goal 4.2 - Sustainably manage local water resources to maximize reliability and advance water reuse to ensure safe, reliable and affordable water to our community.

Goal 6.2 - Maintain, protect and improve assets and infrastructure within the City's built environment to ensure and enhance reliability, resiliency, sustainability, and facilitate connectivity.

Cross-Cutting Threads



Community Trust



Fiscal Responsibility



Sustainability &
Resiliency



Equity



Innovation



15

RiversideCA.gov

15

RECOMMENDATION

That the Mobility & Infrastructure Committee receive an update on the storm drain maintenance program.



16

RiversideCA.gov

16