



# TRUJILLO WATER COMPANY HISTORY

---

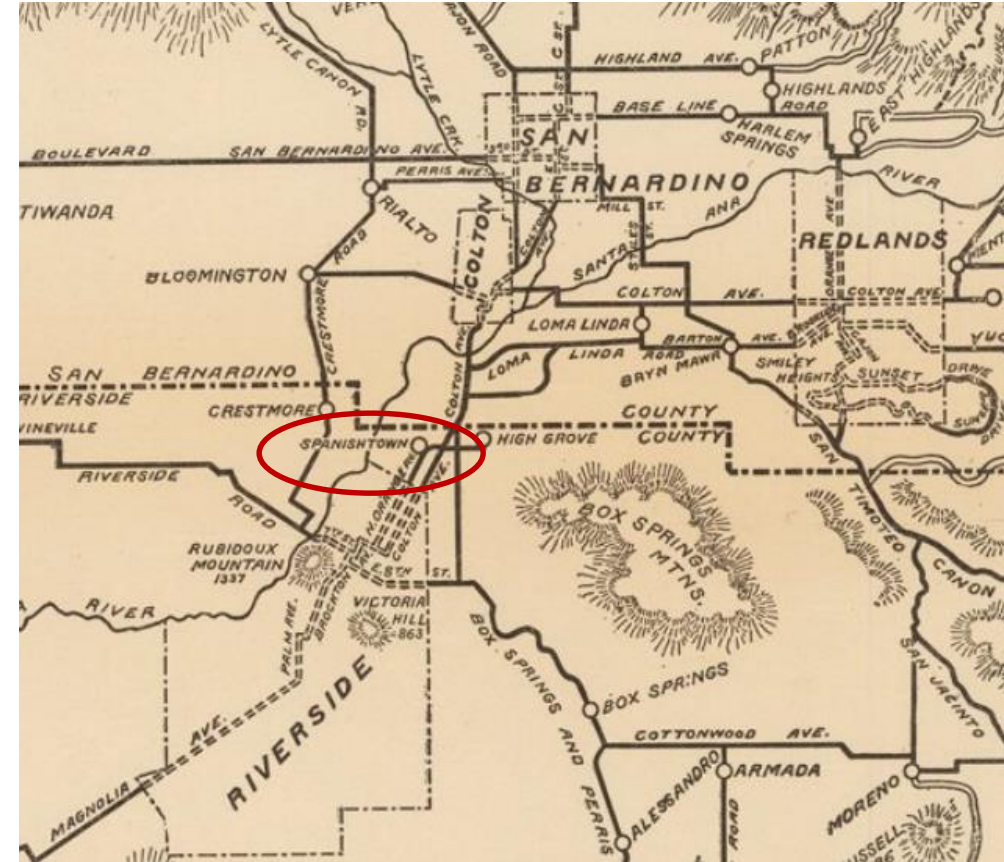
**Trujillo Water Company Board of Directors Meeting**  
June 13, 2022

# BACKGROUND

1. Juan Bandini was granted Rancho Jurupa (32,000 acres) in 1838 through a Spanish Land grant
2. Lorenzo Trujillo came to California along the Old Spanish Trail from New Mexico with the Workman-Roland party in 1841.
  - a. Trujillo had made the trip before
3. Juan Bandini provided Trujillo with 2,200 acres along the Santa Ana River in exchange for providing Bandini with protection from raids

# BACKGROUND

1. 1844, villages of Agua Mansa (located along north bank of river) and La Placita (located along south bank of river) were established
2. Flood of 1862 destroyed villages and settlers relocated to Spanish town
3. The Trujillo ditch was constructed to provide irrigation water to the community



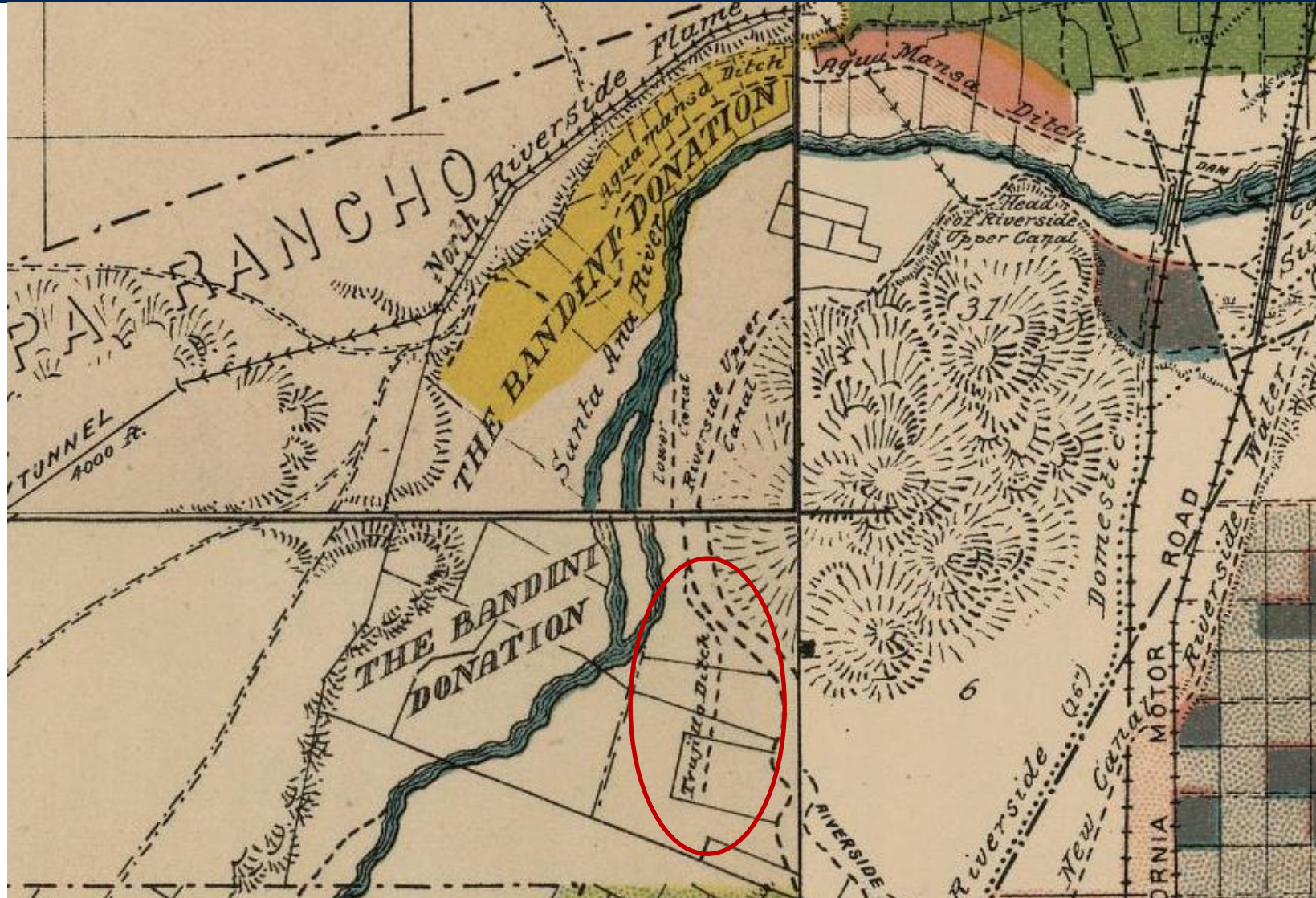
# BACKGROUND

1. Riverside Land & Irrigating Company constructed lower Riverside Canal in 1874
  - a. R.L. & I. Co gained control of the Southern California Colony Association (the original settlement that became the town of Riverside) and the original Riverside Canal
  - b. Constructed Lower Canal to irrigate lands south of the Colony Association
2. Lower Riverside Canal followed the Trujillo Ditch alignment and interfered with ditch
3. Initially the owners of the Trujillo Ditch refused to allow construction of the lower canal across their property
4. Eventually reached a compromise to allow construction in return for receiving water from the Lower Canal





# BACKGROUND



Map circa 1888

# BACKGROUND

1. Through court decree in 1884, Trujillo Ditch entitled to 100 miner's-inches (900 gpm) of continuous flow from Riverside Canal
2. 1885, Riverside Water Company (RWCo) incorporated taking on water interests of R.L. & I. Co
3. 1910, Trujillo Water Company incorporated
4. 1913, Lower Canal abandoned and deliveries resumed via a pipeline connected to the Upper Riverside Canal
5. 1959, The City of Riverside condemned the RWCo and absorbed its obligations

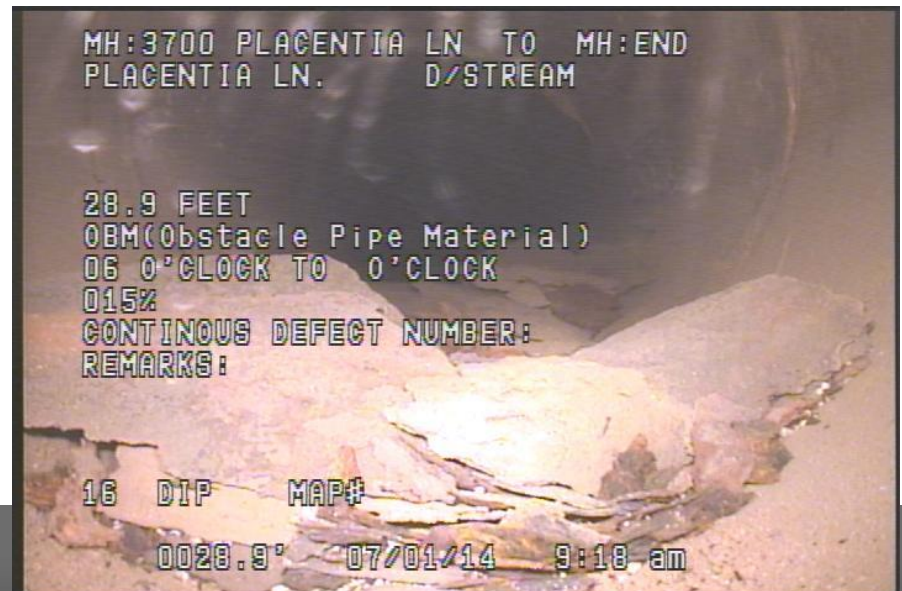
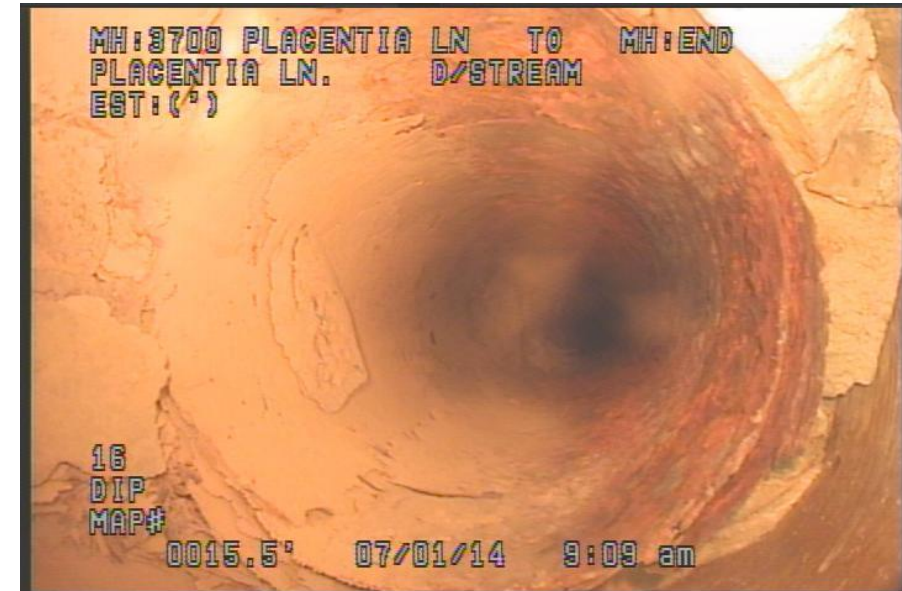
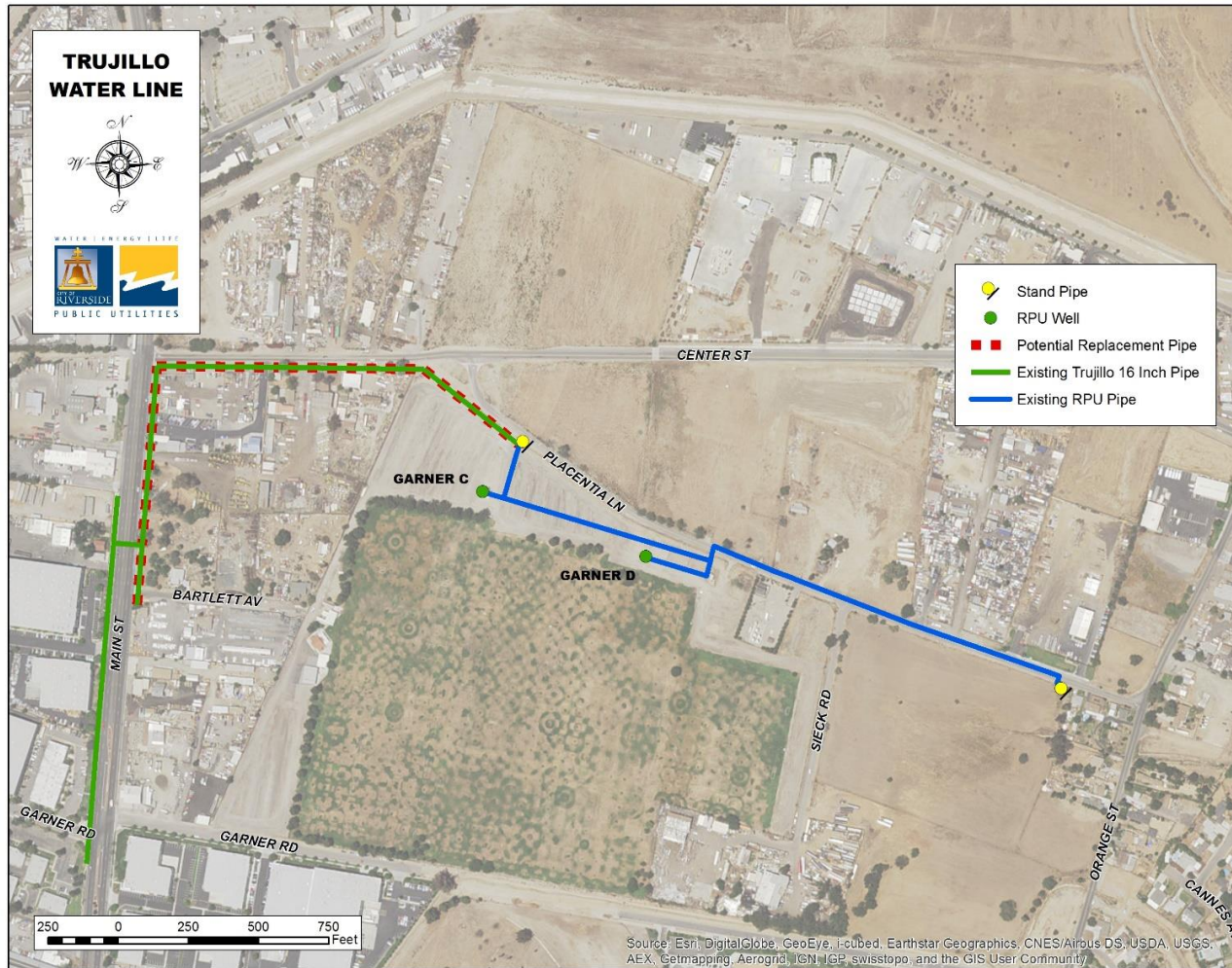


# BACKGROUND

1. Local groundwater wells located within the Ab Brown Sports Complex were ultimately used to supply the Trujillo Ditch with water
2. Requested deliveries were made at two standpipes located along Placentia Lane
3. 16-inch irrigation pipeline delivers water from one standpipe to shareholders
4. Pipeline has deteriorated beyond repair and in 2012, City ceased deliveries
  - a. Replacement of a portion of pipeline estimated at \$233,300 (2013 dollars)



# PIPELINE





# SHARES AND ENTITLEMENTS

1. Over the years, many shareholders sold their water rights to the City of Riverside.
2. Today, only the Hamilton, Garner, Console, and Dickey families remain as individual shareholders

**Trujillo Water Company**

Shareholder	Shares	%	AFY
City of Riverside	157.83	77.69%	1,128.5
Hamilton	20.46	10.07%	146.3
Garner	20.46	10.07%	146.3
Console	2.4	1.18%	17.2
Dickey	2	0.98%	14.3
Total	203.15	1	1,452.5

- Entitled to a continuous flow of 100 miner's inches or, 900 gpm

- 900 gpm = 1,452.5 AFY or, 7.15 AFY per share

# RECOMMENDATION

That the Trujillo Water Company Board of Directors receive and file a presentation on the Trujillo Water Company history.