

WESTERN MUNICIPAL WATER DISTRICT AND RIVERSIDE PUBLIC UTILITIES DROUGHT RESPONSE

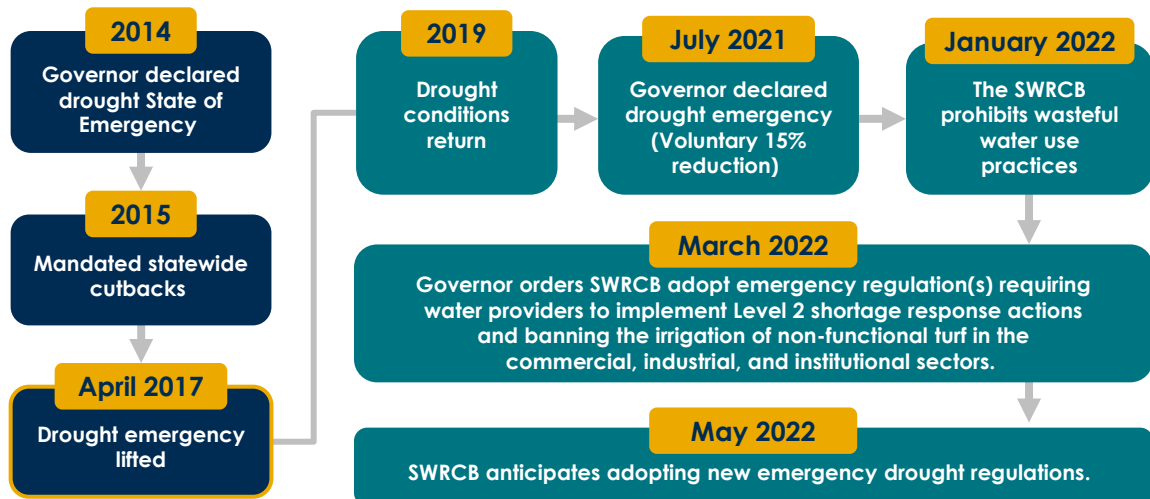
Western Municipal Water District (Western)
and Riverside Public Utilities (RPU)

City Council
June 14, 2022

RiversideCA.gov

1

DROUGHT & REGULATORY TIMELINE (2014-2022)



RiversideCA.gov

2

2

EMERGENCY DROUGHT REGULATIONS

Intensity:

- None
- D0 Abnormally Dry
- D1 Moderate Drought
- D2 Severe Drought
- D3 Extreme Drought
- D4 Exceptional Drought

Governor's Executive Order issued **March 2022** requesting the SWRCB to adopt an emergency regulations requiring:

- Water providers to implement response actions of **10-20%** shortage level
- Prohibition of the use of **potable** water to **irrigate non-functional turf** in the commercial, industrial, and institutional sectors.

3

RiversideCA.gov

3

SERVICE AREA

Riverside Public Utilities

Western Municipal Water District

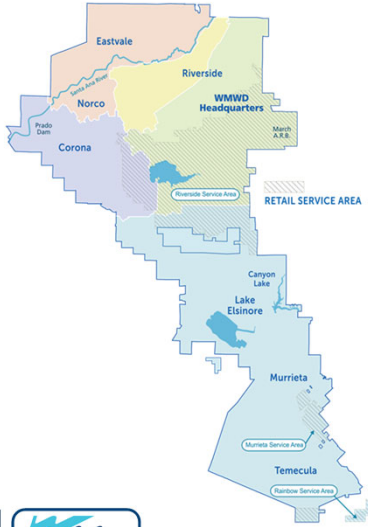
Eastern Municipal Water District

4

RiversideCA.gov

4

WESTERN SERVICE AREA



Established in 1954 to deliver imported water

- Drinking water, wastewater, recycled water, stormwater capture/recharge, groundwater management, and desalination

Located in western Riverside County

- 527 square miles | Pop. ~ 1 million
- 60,000 – 85,000 acre-feet of water served annually



5

RiversideCA.gov

5

WATER SHORTAGE CONTINGENCY PLAN

WSCP is a roadmap for a water supplier to follow when a water shortage occurs.



- Specific to **each water provider** to account for local conditions (i.e. supply portfolio, rate structure, constraints, etc.)
- Water shortage levels **with associated demand reduction actions**



6

RiversideCA.gov

6

WATER SHORTAGE CONTINGENCY PLAN



**RPU and WMWD shortage stages
and demand reduction actions**

Agency Specific Toolbox



Outdoor Watering Restrictions



Data Analytics



Customer Communication



Price Signals





7

RiversideCA.gov

7

WATER SHORTAGE CONTINGENCY PLAN SIMILARITIES

 Stage 2 20% Reduction	 Stage 2 15% Reduction
Automatic irrigation controllers adjusted	
Repair leaks timely	
Water features to recirculate water	
Irrigation run-off restricted	
Hose shut-off nozzles required	
Hosing off sidewalks, driveways and other hardscapes prohibited	
RPU: Landscape watering between 6 PM-10 AM Western: Landscape watering between 8 PM-8 AM	
Landscape irrigation after 48 hours of rainfall	
	Landscape watering 3x per week



8

RiversideCA.gov

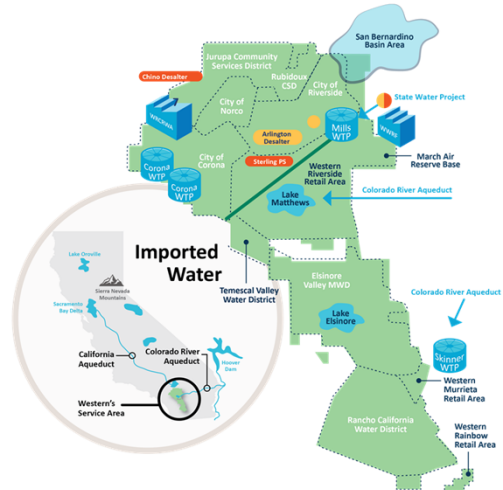
8

WESTERN DROUGHT REGULATION RESPONSE

Western's Water Portfolio 38% Local Supply | 62% Imported

May 2021: Western began feeding Mills Treatment Plant from Diamond Valley Lake

- Current reservoir storage in Diamond Valley Lake is **68% full**
- This action helps Western remain off the State Water Project dependent area list



RiversideCA.gov

9

WESTERN DROUGHT REGULATION RESPONSE



Demand Reduction
Actions



Compliance &
Enforcement



Response to CII non-
functional turf regulation



Budget based rate
structure



AML - Advanced
Metering Infrastructure
(Smart Meters &
Customer Portal)



Drought Task Force



RiversideCA.gov

10

10

RPU DROUGHT REGULATION RESPONSE



Demand Reduction
Actions



Compliance &
Enforcement



Response to CII
non-functional turf
regulation

100% Local Groundwater Supply

Bunker Hill: -8 ft/yr

Rialto-Colton: -0.5 ft/yr

Riverside North: -0.75 ft/yr

Riverside South: -0.5 ft/yr



11

RiversideCA.gov

11

JOINT MESSAGING

Regional **Collaboration Efforts**



Fix all **leaks and broken sprinklers**.



Water landscaping **at night** to reduce evaporation.



Reduce irrigation days to **three days a week**.



Replace your turf with **water-wise plants**.



Wash **full loads of laundry and dishes**.



Take **shorter showers** and use a low-flow showerhead.



Wash your car at a **carwash that recycles water**, instead of at home.



Clean driveways and walkways with a **broom instead of a hose**.



We need trees and trees need water. **Mulching and low flow** watering keep trees thriving.

12


RiversideCA.gov

12

REBATES & RESOURCES

RPU Programs & Rebates



Turf Replacement
Weather Based
Irrigation Controllers



Rotating Sprinkler Nozzles
Premium High Efficiency
Toilets



High Efficiency
Clothes
Washers

Additional Programs & Rebates available at:

RiversidePublicUtilities.com/Rebates | WMWD.com/Rebates

Local **Efforts Alone Are Not Enough**



13

RiversideCA.gov

13

SOLVE THE WATER CRISIS

COALITION MISSION



Through an education campaign, elevate the water crisis

Raise awareness among California policymakers and leaders

Demand bold and immediate State action

Make water a top State agenda item



THE WATER CRISIS
ACT NOW TO SECURE CALIFORNIA'S FUTURE.



14

RiversideCA.gov

14

STRATEGIC PLAN ALIGNMENT



Priority #4 - Environmental Stewardship

Goal 4.2 - Sustainably manage local water resources to maximize reliability and advance water reuse to ensure safe, reliable, and affordable water to our community.

Cross-Cutting Threads



Community Trust



Fiscal Responsibility



Sustainability & Resiliency



Equity



Innovation



15

RiversideCA.gov

15

RECOMMENDATION

That the City Council receive an **update** on Riverside Public Utilities and Western Municipal Water District's response to the State Water Resources Control Board's emergency drought regulations.



16

RiversideCA.gov

16