

Historic Viewer Technology Upgrade Project

INNOVATION & TECHNOLOGY

Cultural Heritage Board
Agenda Item: 5
June 15, 2022

RiversideCA.gov

1

Project Scope

Phase I – Migrate the historic data from the old Access Database to an updated SQL Server Database.

Phase II - Develop a web-based data entry application for the business unit to update and maintain the historic data.

Phase III – Develop a web-based map application for easy viewing, filtering and reporting on the historic data.

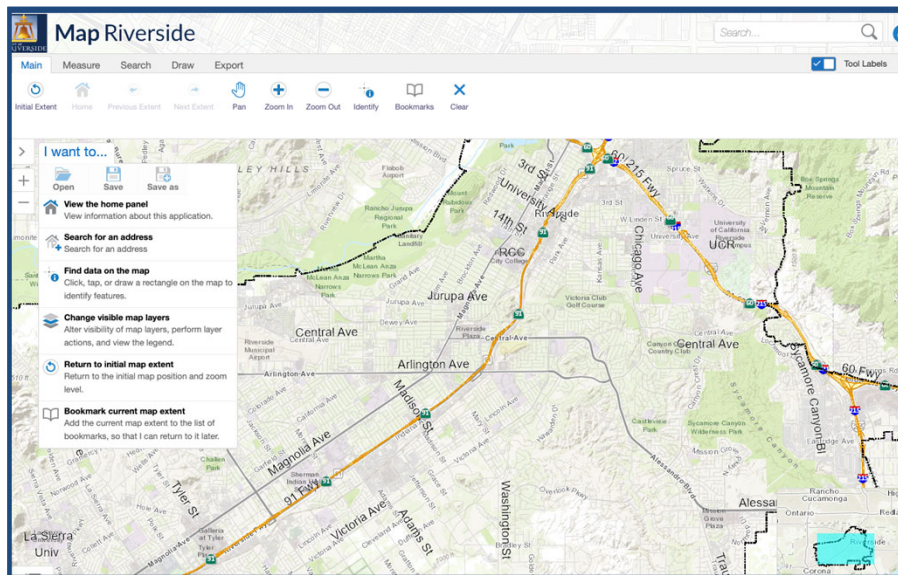


2

RiversideCA.gov

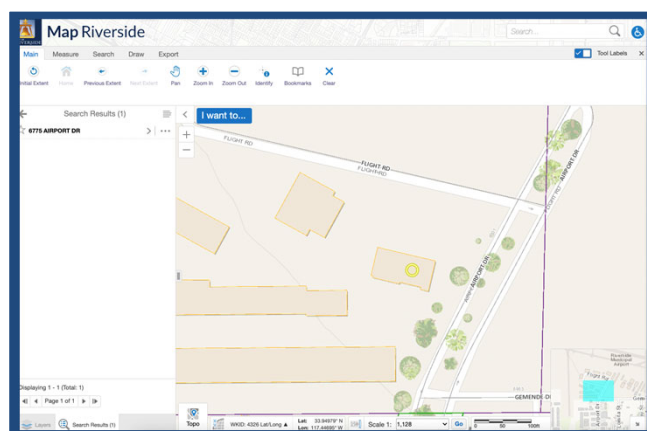
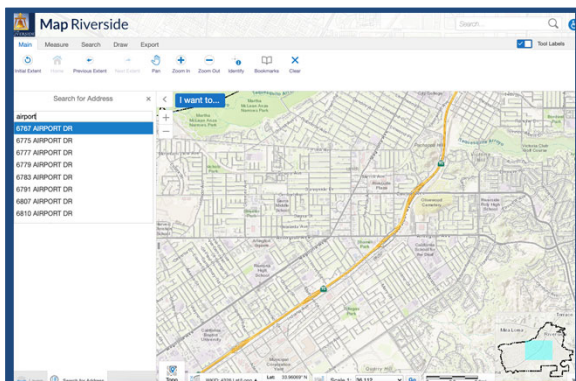
2

Project Scope

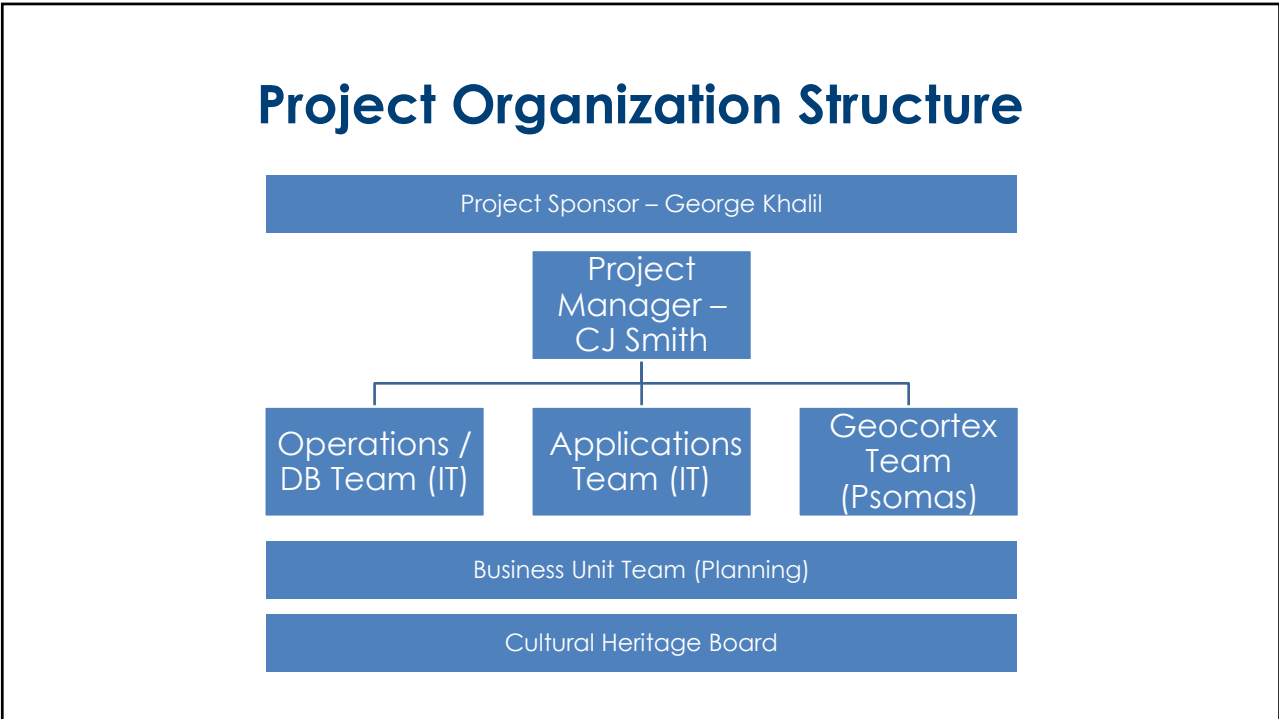


3

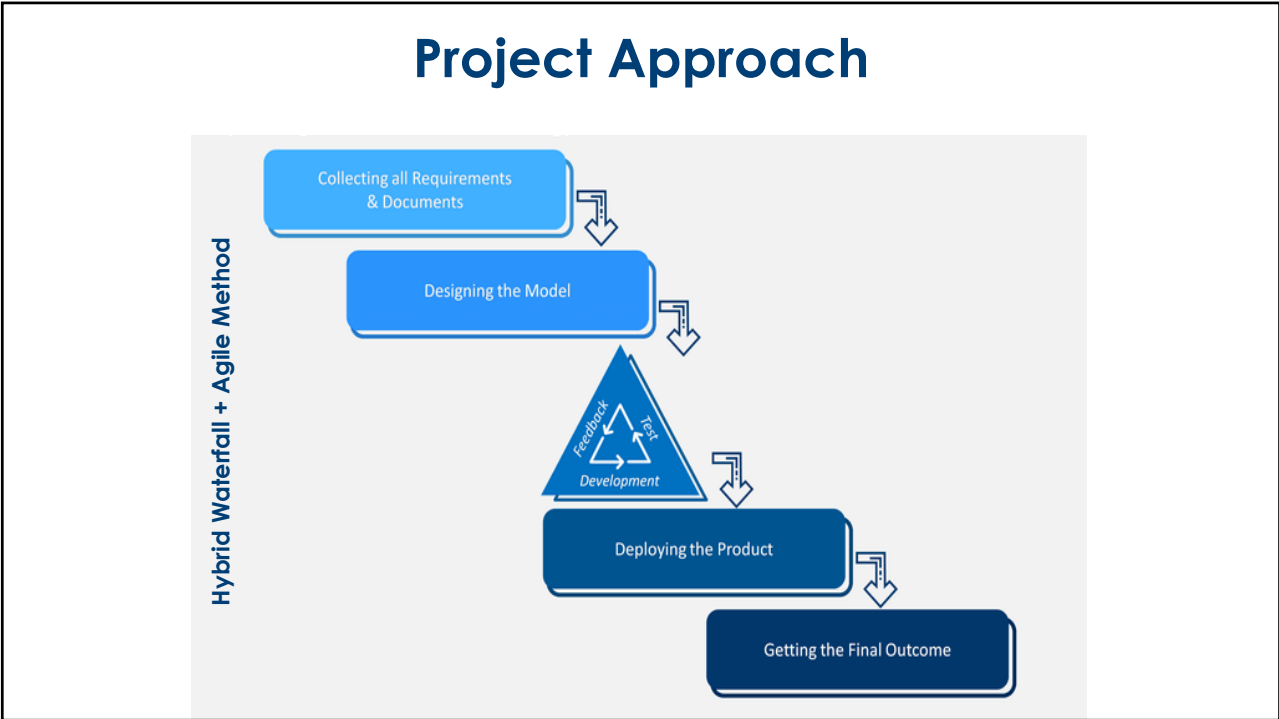
Project Scope



4



5



6

Project Schedule


Milestone	April	May	June	July	Aug	Sept	Oct	Nov	Dec	% Comp.
Requirements gathering										100%
Access database migration										100%
Data ETL process										20%
Data entry application										10%
Geocortex map application										5%
Geocortex Reports										0%
User acceptance testing										0%
Training										0%
Documentation										0%
Close-out										0%

7

Risk Log

NO RISK IDENTIFIED TO DATE

Risk ID	Risk Description	Date	Probability	Impact	Risk Level	Contingency	Current Impact
R001							
R002							
R003							
R004							


8

RiversideCA.gov

8

Issues & Change Requests

NO ISSUES/CHANGE REQUESTS

Issue Log

Issue ID	Date Raised	Raised By	Description	Priority	Severity
I001	-	-	-	-	-
I002	-	-	-	-	-
I003	-	-	-	-	-

Change Requests Log

Issue ID	Description	Date Received	Date Required	Priority	Owner
C001	-	-	-	-	-
C002	-	-	-	-	-
C003	-	-	-	-	-



Communication Plan

Communication	Frequency
Historic Board Updates	Quarterly
Project team calls	Weekly
Internal core team meetings	As needed

Next Steps

- Finalize the ETL process
- Finalize the data entry application
- Configure the initial web-based application

11

Questions

12

