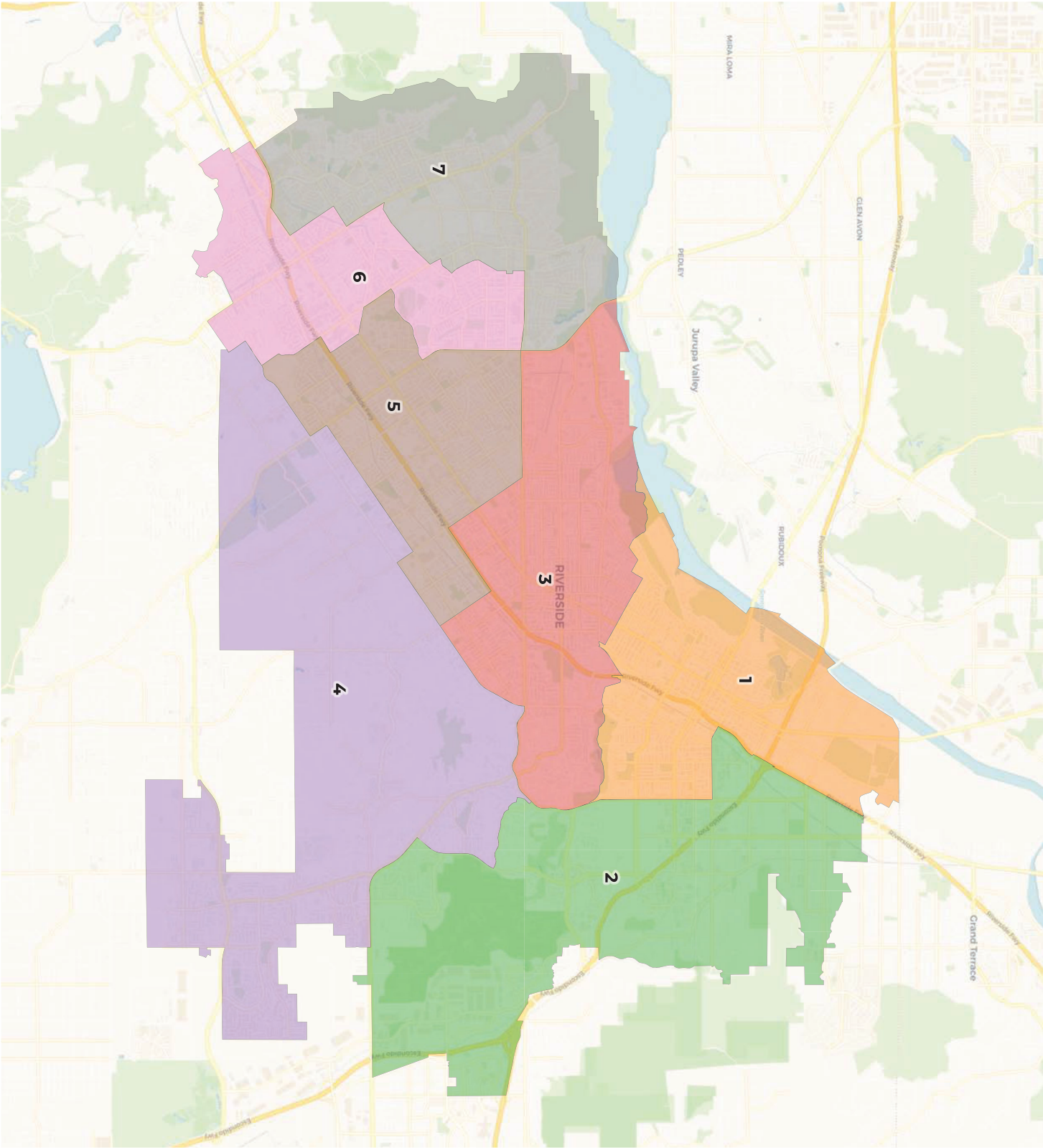


Attachment 2a - Draft A - Minimal Neighborhood Splits



City of Riverside  
Draft A - minimal neighborhood splits



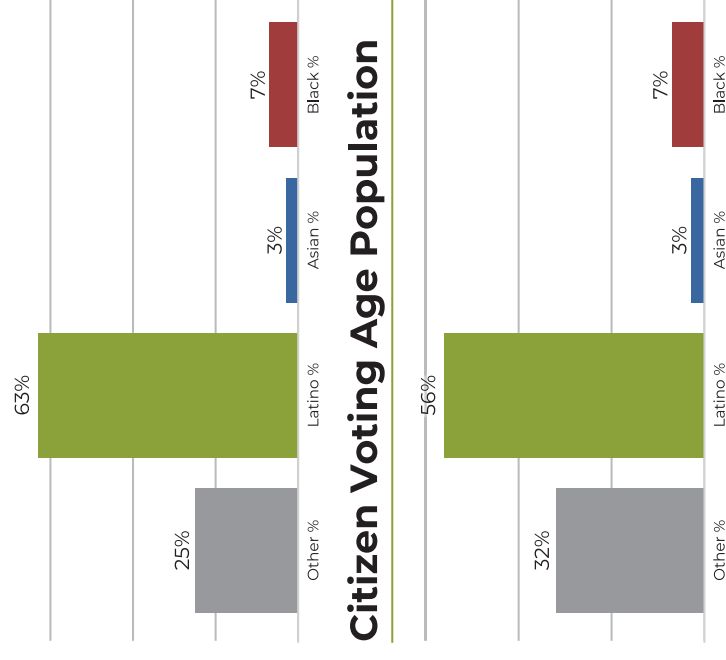
## 2020 Census

	1	2	3	4	5	6	7
Population	44,013	43,715	45,828	44,993	46,344	46,185	45,367
Deviation	-1,193	-1,491	622	-213	1,138	979	161
Deviation %	-2.6%	-3.3%	1.4%	-0.5%	2.5%	2.2%	0.4%
Other	11,326	17,789	18,058	22,332	12,059	9,775	10,350
Other %	25.7%	40.7%	39.4%	49.6%	26.0%	21.2%	22.8%
Latino	27,886	15,739	24,200	14,017	29,882	31,771	29,662
Latino %	63.4%	36.0%	52.8%	31.2%	64.5%	68.8%	65.4%
Asian	1,567	6,207	1,331	5,439	2,089	2,600	3,224
Asian %	3.6%	14.2%	2.9%	12.1%	4.5%	5.6%	7.1%
Black	3,234	3,980	2,239	3,205	2,314	2,039	2,131
Black %	7.3%	9.1%	4.9%	7.1%	5.0%	4.4%	4.7%

## Citizen Voting Age Population (CVAP)

	1	2	3	4	5	6	7
Total CVAP	27,443	32,541	31,694	33,896	32,107	28,214	30,829
Other CVAP	8,770	13,912	15,522	18,034	12,091	8,039	9,593
Other CVAP %	32.0%	42.8%	49.0%	53.2%	37.7%	28.5%	31.1%
Latino CVAP	15,493	11,694	13,294	8,709	16,717	16,445	16,813
Latino CVAP %	56.5%	35.9%	41.9%	25.7%	52.1%	58.3%	54.5%
Asian CVAP	1,067	4,519	926	4,385	1,224	1,927	2,822
Asian CVAP %	3.9%	13.9%	2.9%	12.9%	3.8%	6.8%	9.2%
Black CVAP	2,113	2,416	1,952	2,768	2,075	1,803	1,601
Black CVAP %	7.7%	7.4%	6.2%	8.2%	6.5%	6.4%	5.2%

# 2020 Census



Population	Deviation	Deviation %	Other	Other %	Latino	Latino %	Asian	Asian %	Black	Black %
44,013	-1,193	-2.6%	11,326	25.7%	27,886	63.4%	1,567	3.6%	3,234	7.3%
Total CVAP										
27,443	8,770	32.0%	15,493	56.5%	1,067		3.9%		2,113	7.7%

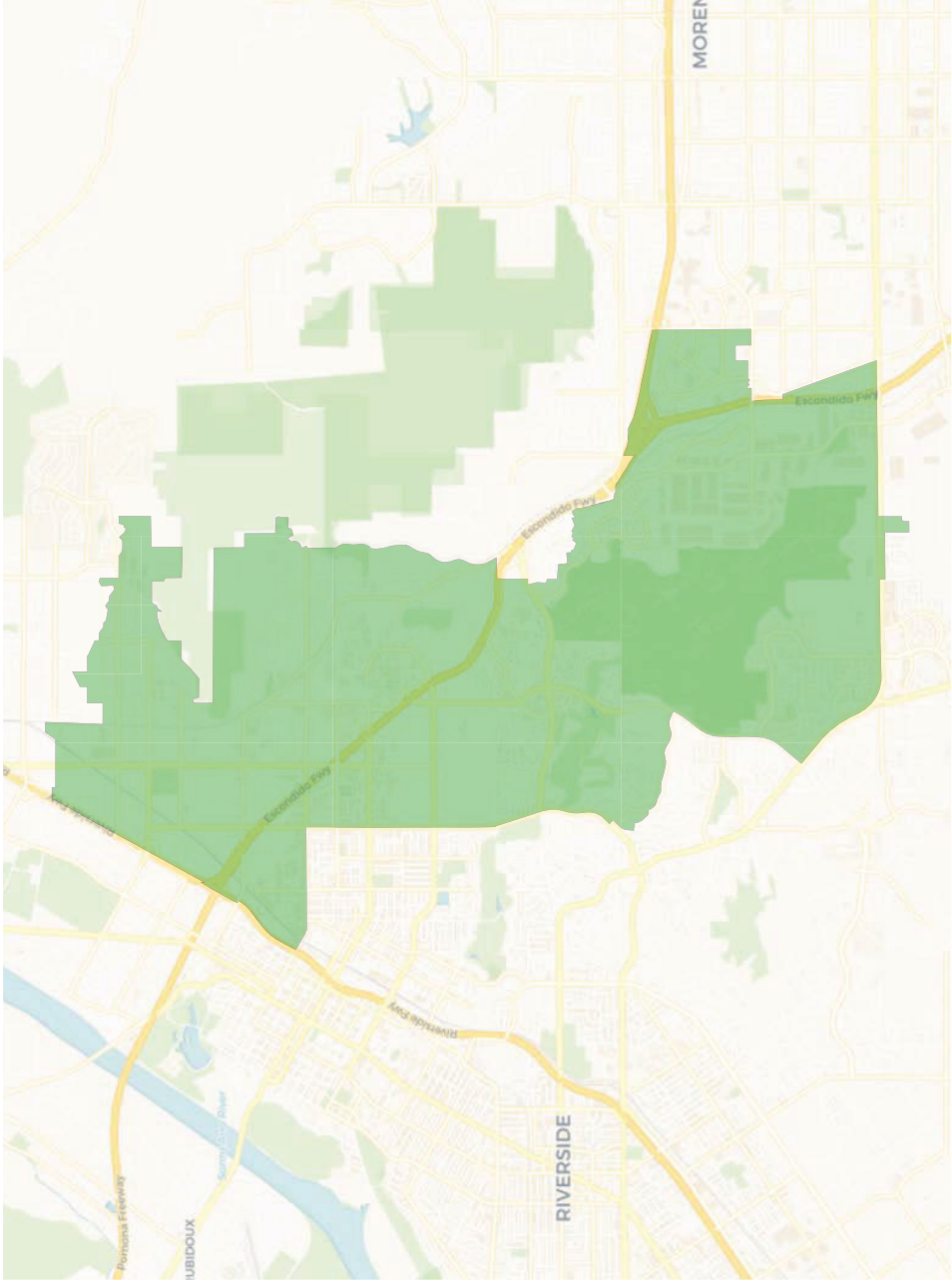


# REDISTRICTING PARTNERS

## City of Riverside

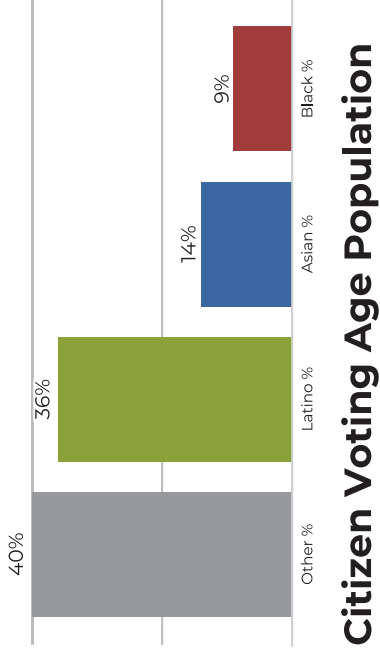
Draft A - minimal neighborhood splits

### Ward 2

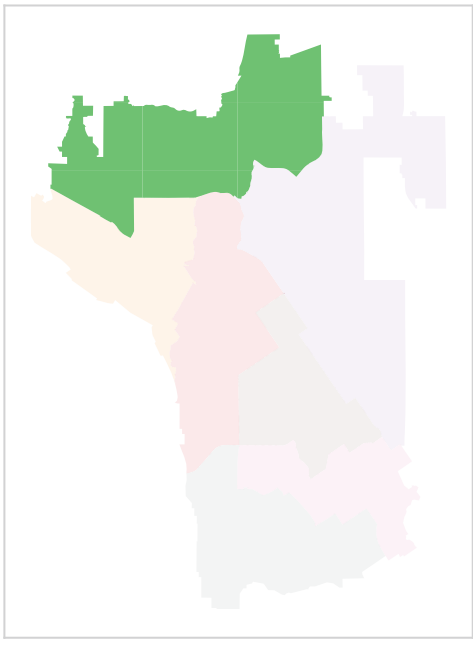
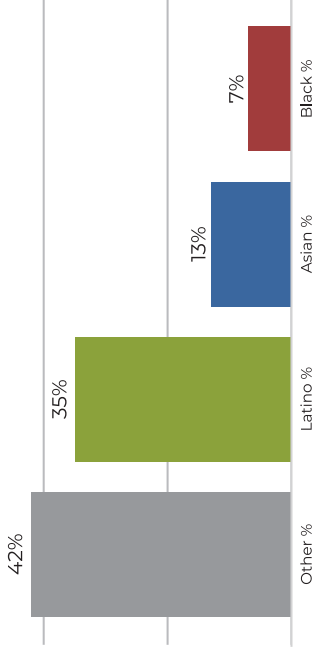


Population	Deviation	Deviation %	Other	Other %	Latino	Latino %	Asian	Asian %	Black	Black %
43,715	-1,491	-3.3%	17,789	40.7%	15,739	36.0%	6,207	14.2%	3,980	9.1%
Total CVAP			Other CVAP	Other CVAP %	Latino CVAP	Latino CVAP %	Asian CVAP	Asian CVAP %	Black CVAP	Black CVAP %
32,541	13,912	42.8%	11,694	35.9%	4,519	13.9%	2,416	7.4%		

### 2020 Census



### Citizen Voting Age Population





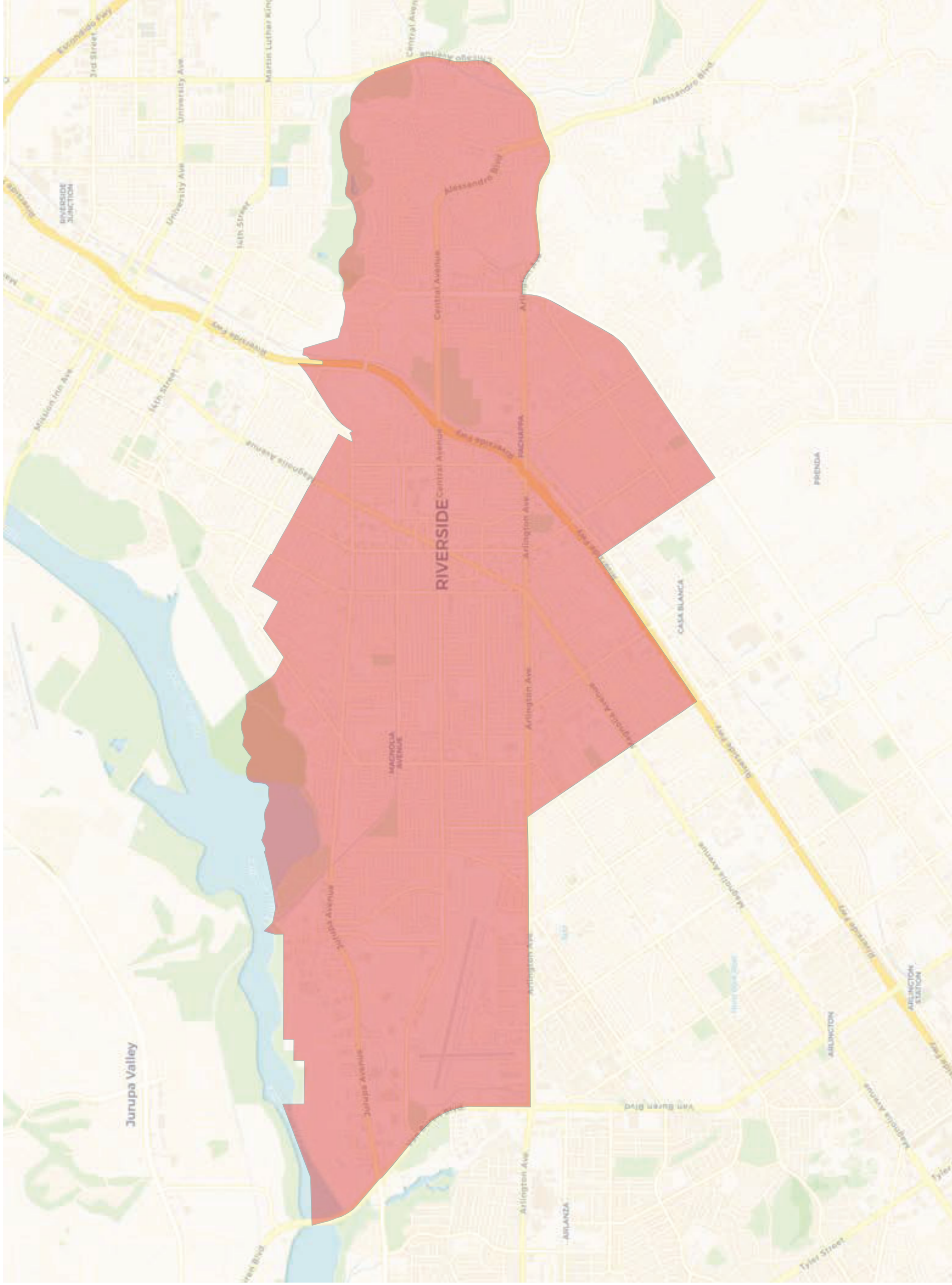


# REDISTRICTING PARTNERS

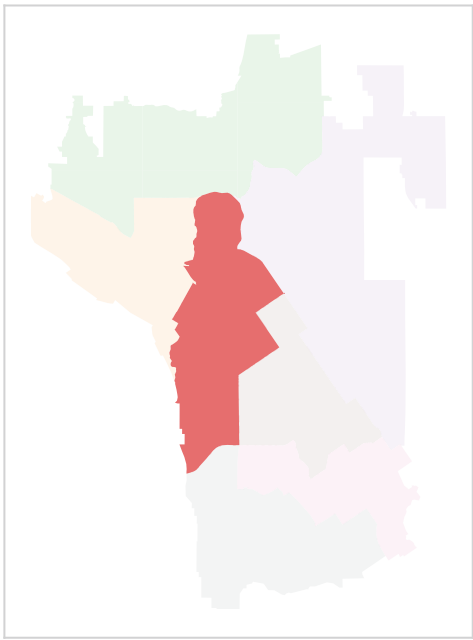
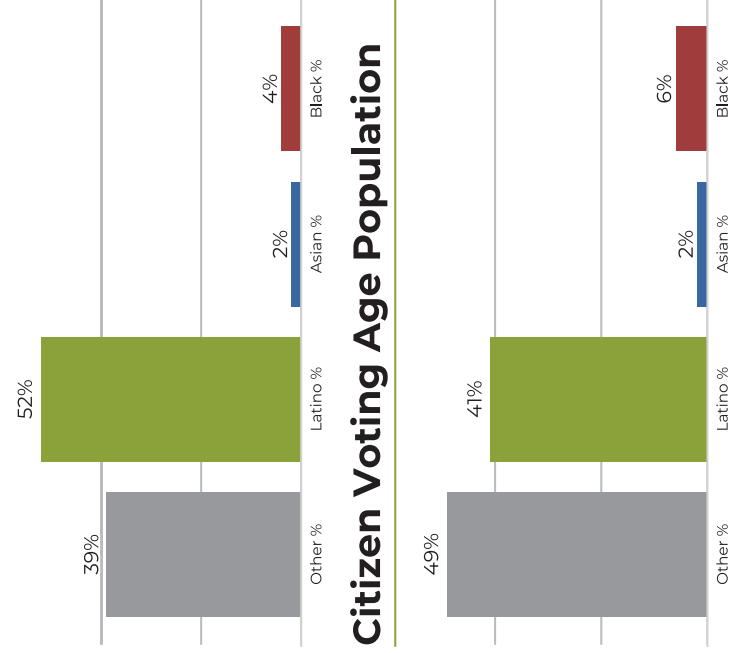
## City of Riverside

Draft A - minimal neighborhood splits

### Ward 3



### 2020 Census



Population	Deviation	Deviation %	Other	Other %	Latino	Latino %	Asian	Asian %	Black	Black %
45,828	622	1.4%	18,058	39.4%	24,200	52.8%	1,331	2.9%	2,239	4.9%
Total CVAP										
31,694	15,522	49.0%	13,294	41.9%	926	2.9%	1,952	6.2%		

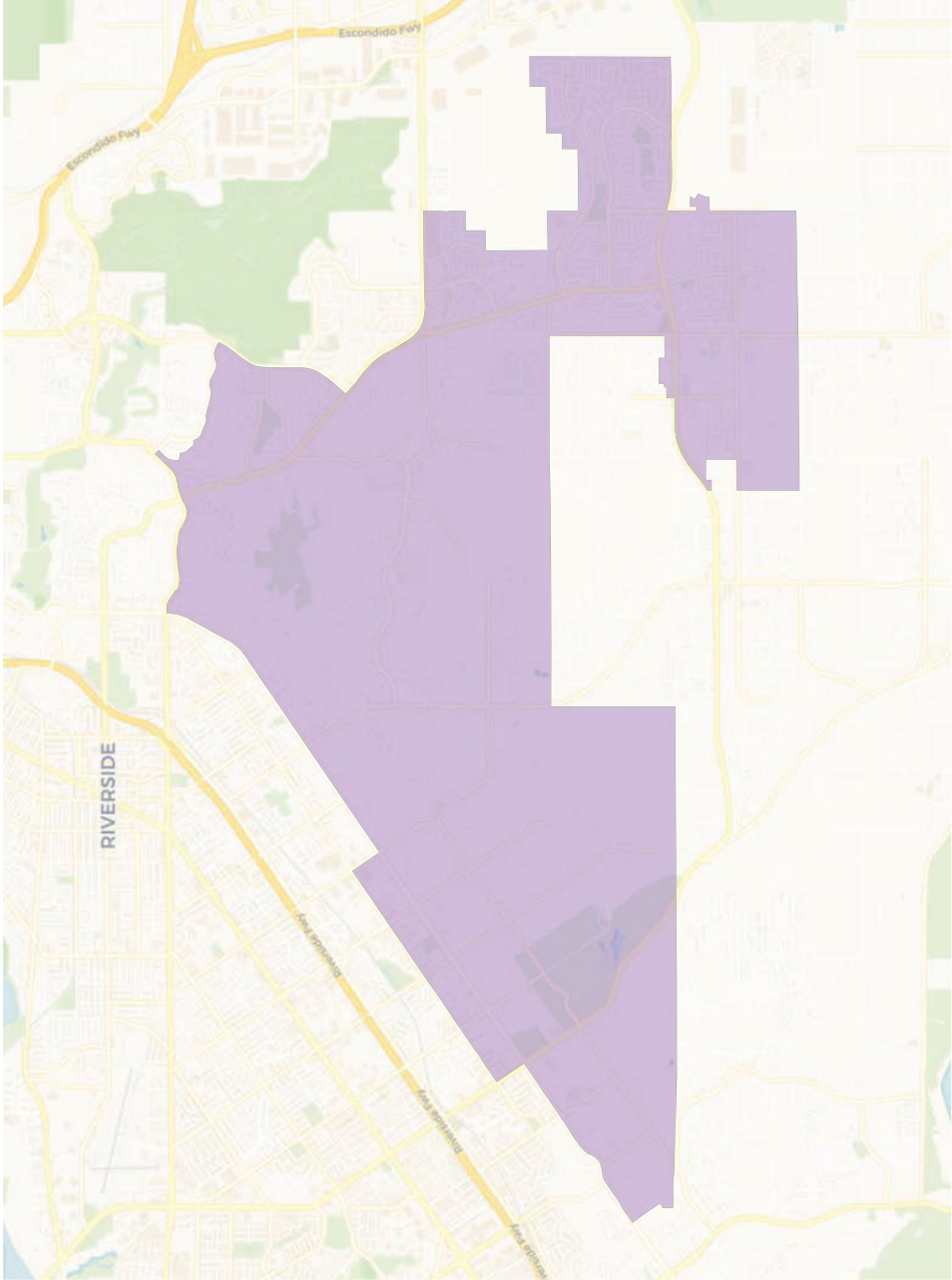


# REDISTRICTING PARTNERS

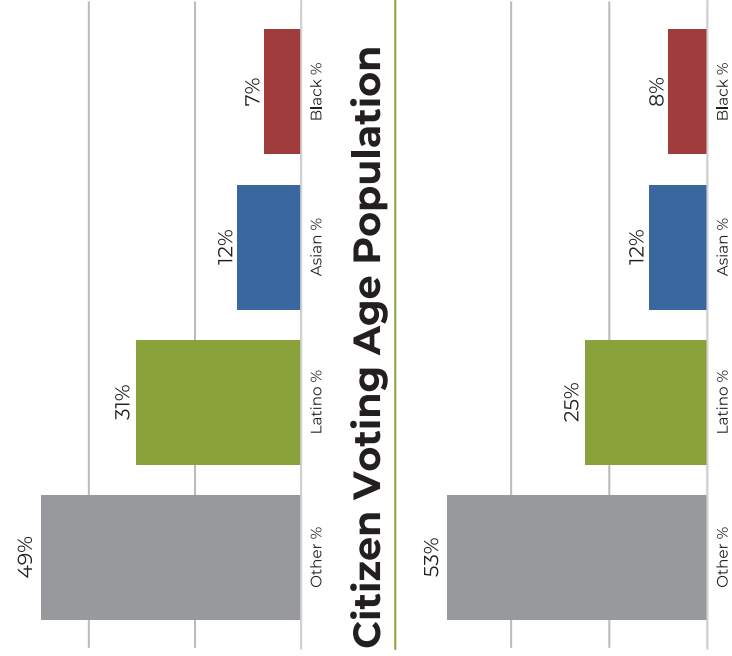
## City of Riverside

Draft A - minimal neighborhood splits

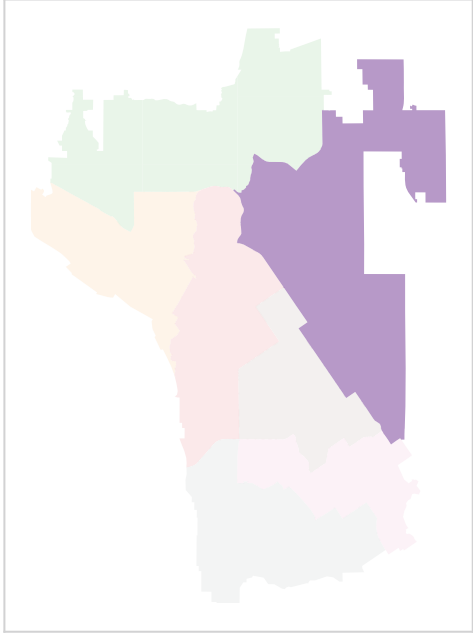
### Ward 4



### 2020 Census



### Citizen Voting Age Population



Population	Deviation	Deviation %	Other	Other %	Latino	Latino %	Asian	Asian %	Black	Black %
44,993	-213	-0.5%	22,332	49.6%	14,017	31.2%	5,439	12.1%	3,205	7.1%
Total CVAP										
33,896	18,034	53.2%	8,709	25.7%	4,385	12.9%	2,768	8.2%		

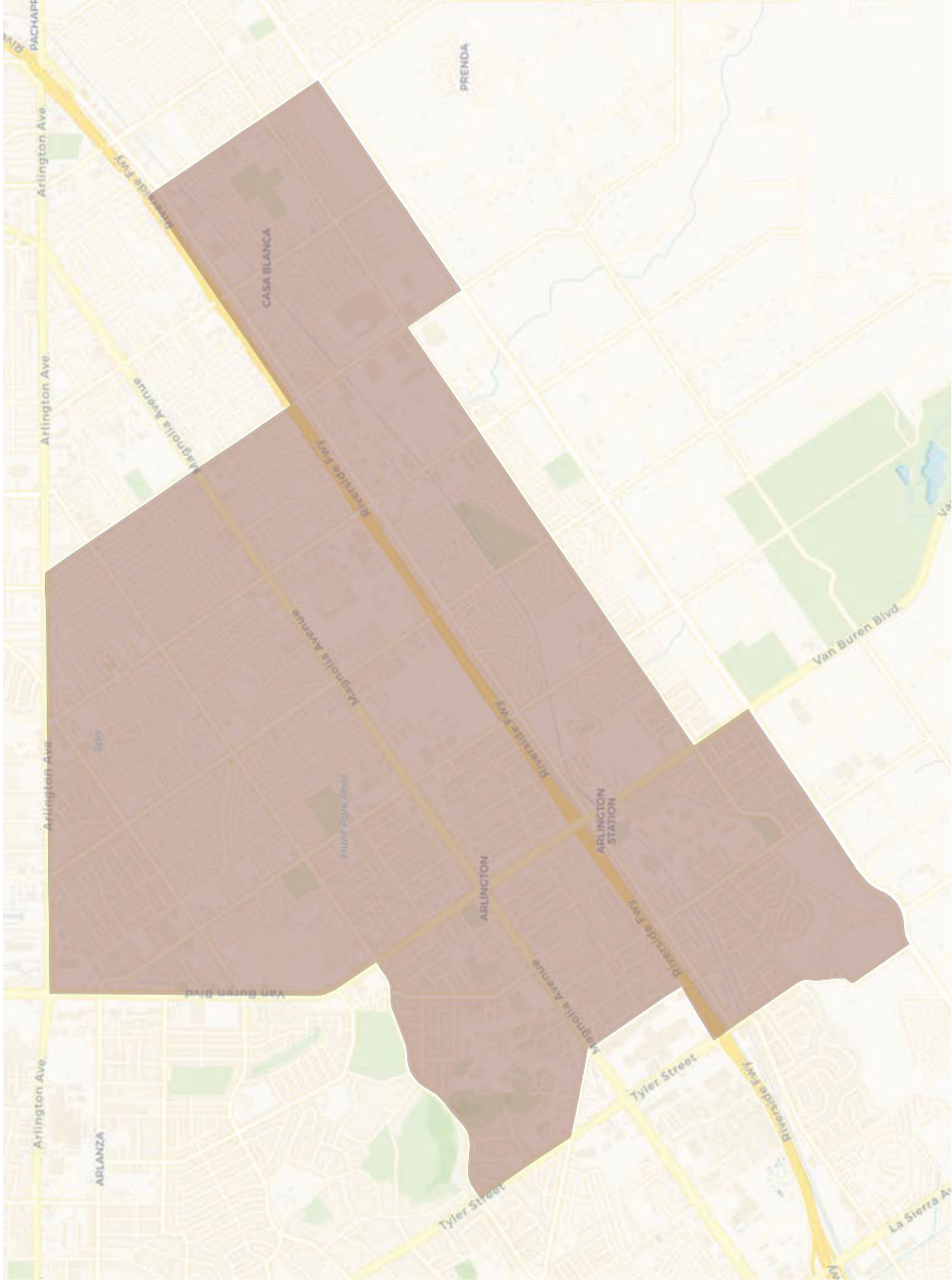


# REDISTRICTING PARTNERS

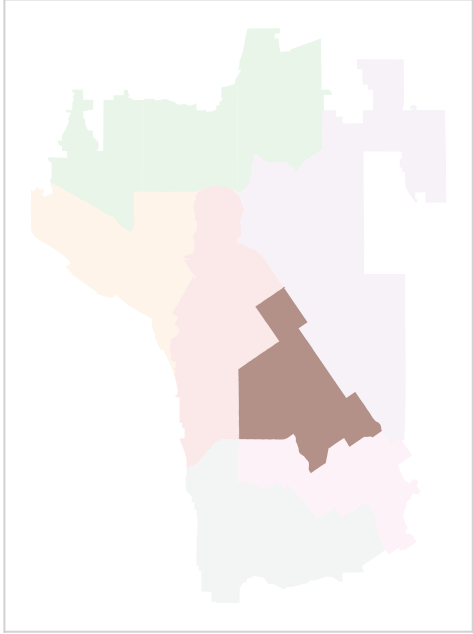
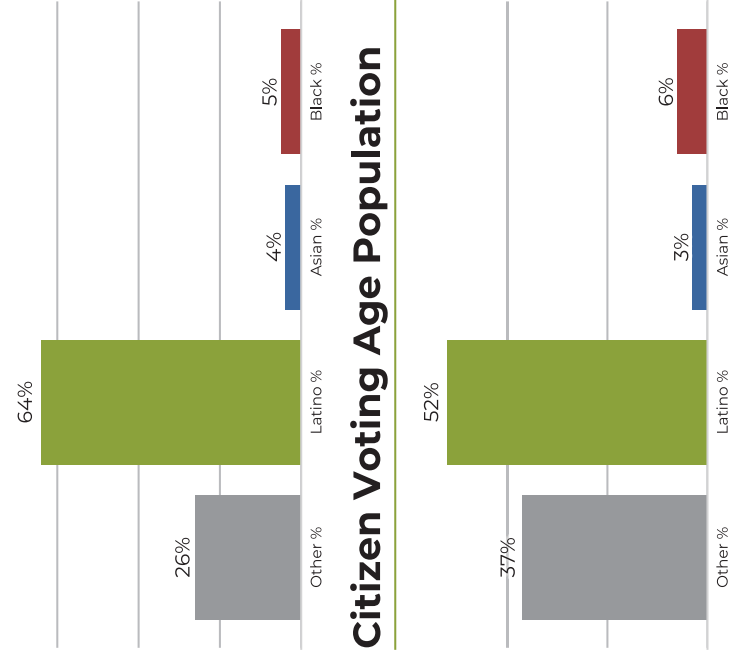
## City of Riverside

Draft A - minimal neighborhood splits

### Ward 5



### 2020 Census



Population	Deviation	Deviation %	Other	Other %	Latino	Latino %	Asian	Asian %	Black	Black %
46,344	1,138	2.5%	12,059	26.0%	29,882	64.5%	2,089	4.5%	2,314	5.0%
Total CVAP										
32,107	12,091	37.7%	16,717	52.1%	1,224	3.8%	2,075	6.5%		



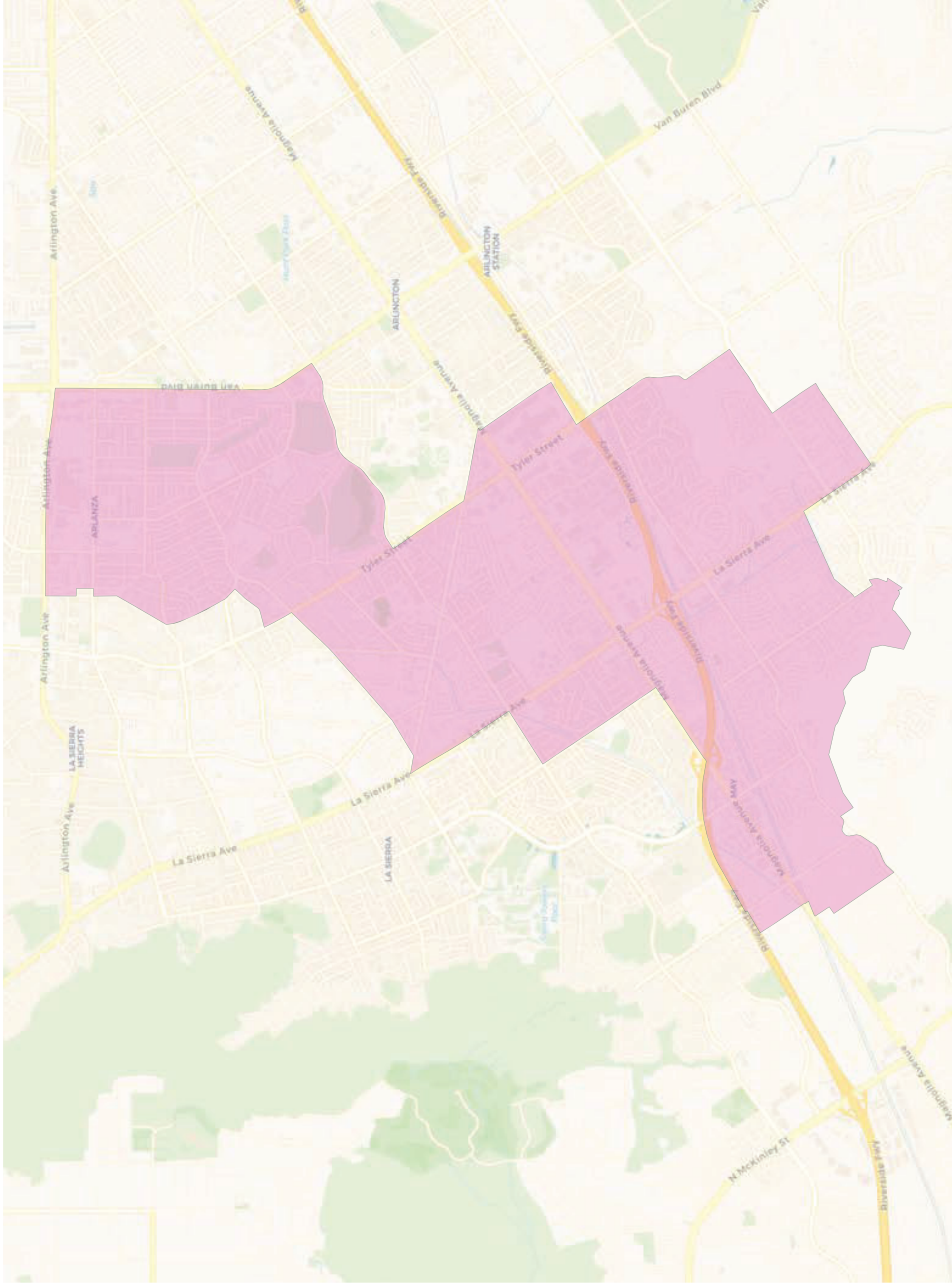


# REDISTRICTING PARTNERS

## City of Riverside

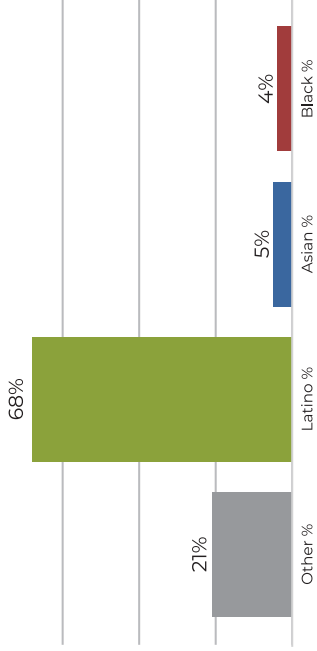
Draft A - minimal neighborhood splits

### Ward 6

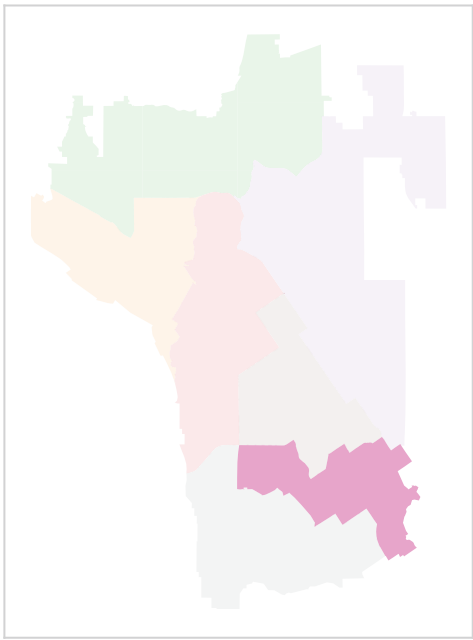
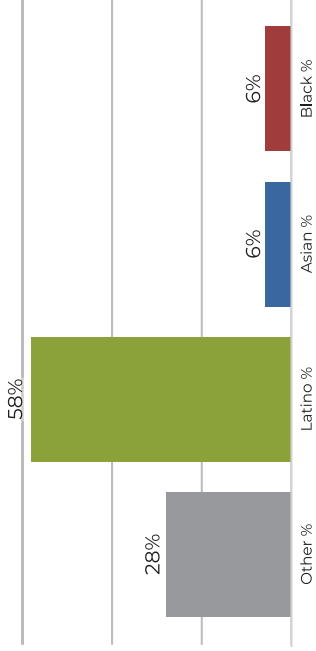


Population	Deviation	Deviation %	Other	Other %	Latino	Latino %	Asian	Asian %	Black	Black %
46,185	979	2.2%	9,775	21.2%	31,771	68.8%	2,600	5.6%	2,039	4.4%
Total CVAP		Other CVAP	Other CVAP %	Latino CVAP	Latino CVAP %	Asian CVAP	Asian CVAP %	Black CVAP	Black CVAP %	
28,214	8,039	28.5%	16,445	58.3%	1,927	6.8%	1,803	6.4%		

### 2020 Census



### Citizen Voting Age Population





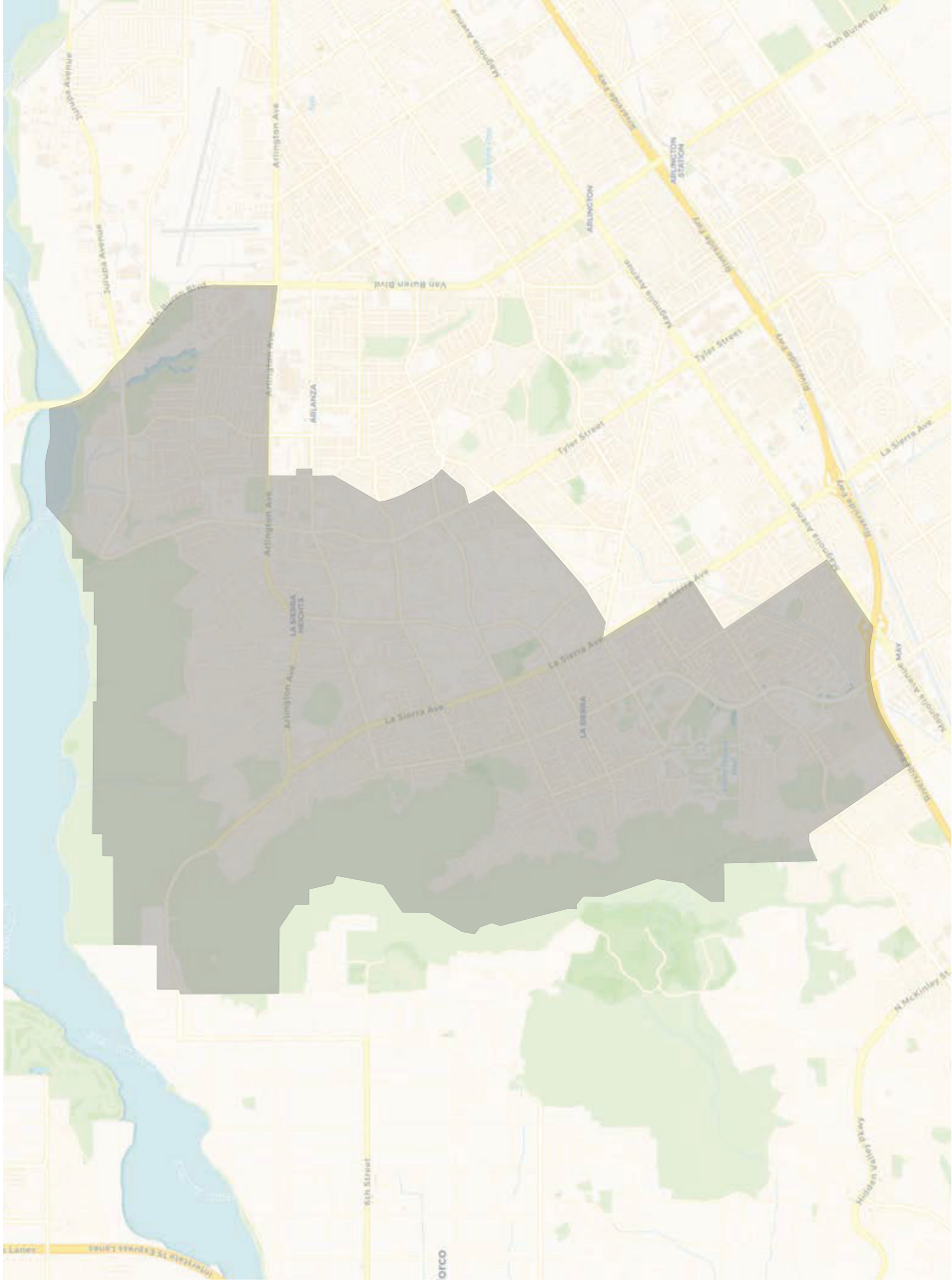


# REDISTRICTING PARTNERS

## City of Riverside

Draft A - minimal neighborhood splits

### Ward 7



Population	Deviation	Deviation %	Other	Other %	Latino	Latino %	Asian	Asian %	Black	Black %
45,367	161	0.4%	10,350	22.8%	29,662	65.4%	3,224	7.1%	2,131	4.7%
Total CVAP										
30,829	9,593	31.1%	16,813	54.5%	2,822	9.2%	1,601	5.2%		

### 2020 Census

