

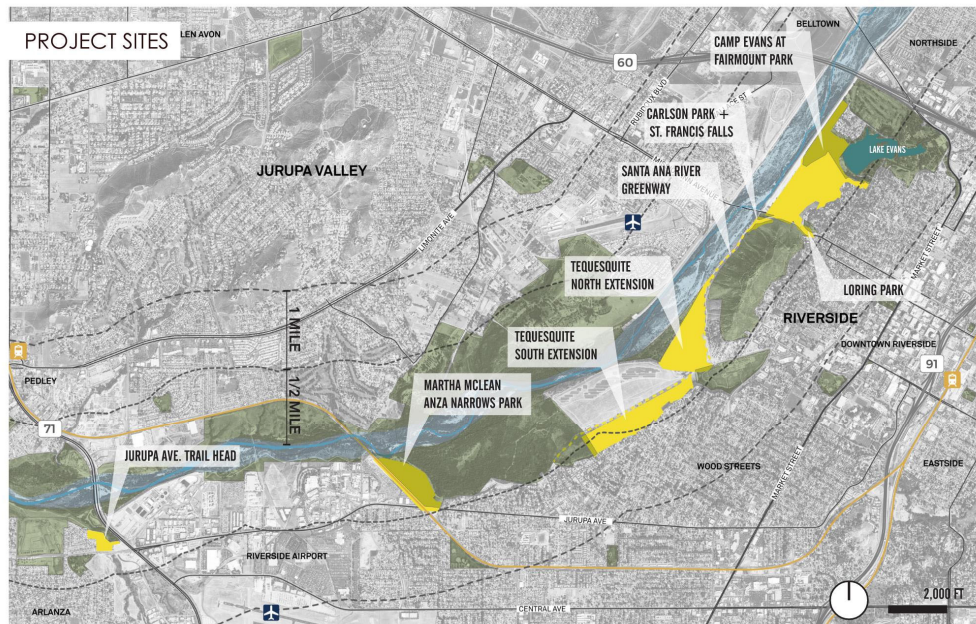
Riverside Gateway Parks Master Plans

Parks, Recreation and Community Services Department

City Council
October 25, 2022

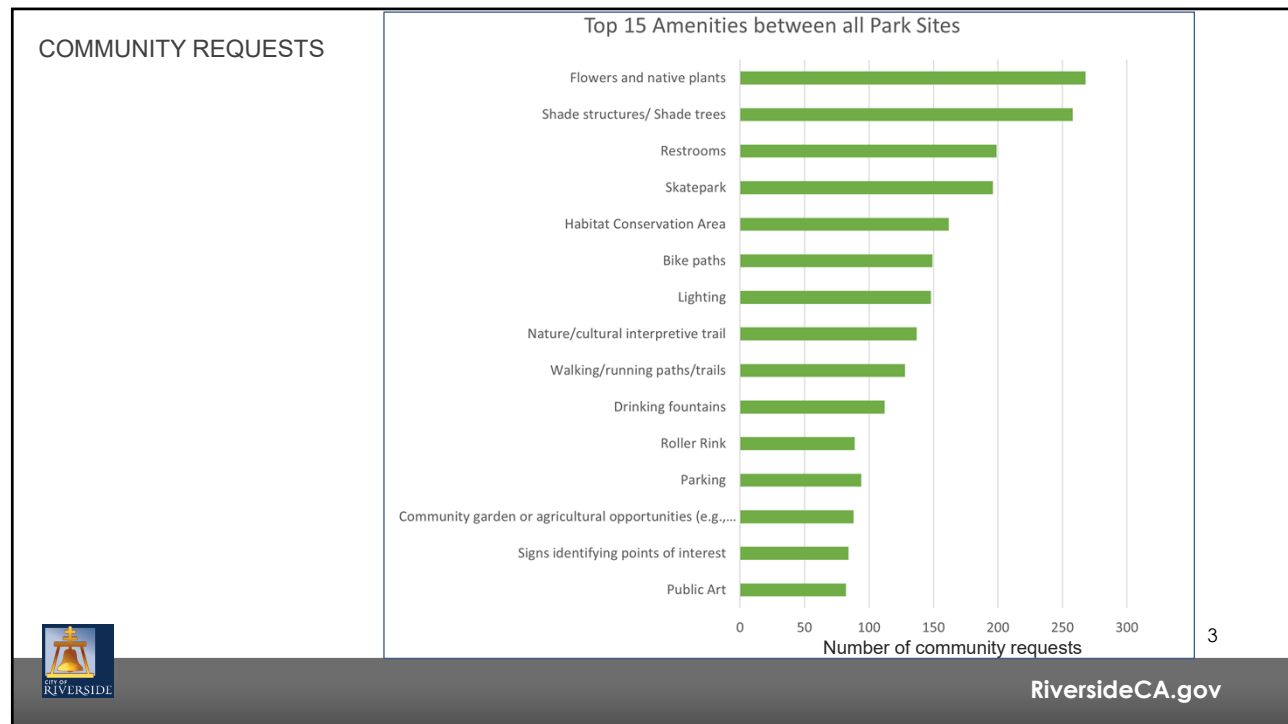
RiversideCA.gov

1



RiversideCA.gov

2



3



4

CAMP EVANS: A HIGH INTEREST IN **NATURE** AND **RECREATIONAL OPPORTUNITIES**

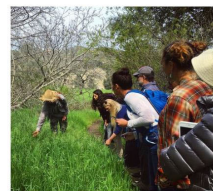


RiversideCA.gov

5

5

CAMP EVANS: MASTERPLAN



FORAGE GARDEN



NATURE AND ART WALK



COMMUNITY ORCHARD



URBAN FARM INCUBATOR



COMMUNITY ARCHERY RANGE



6



RiversideCA.gov

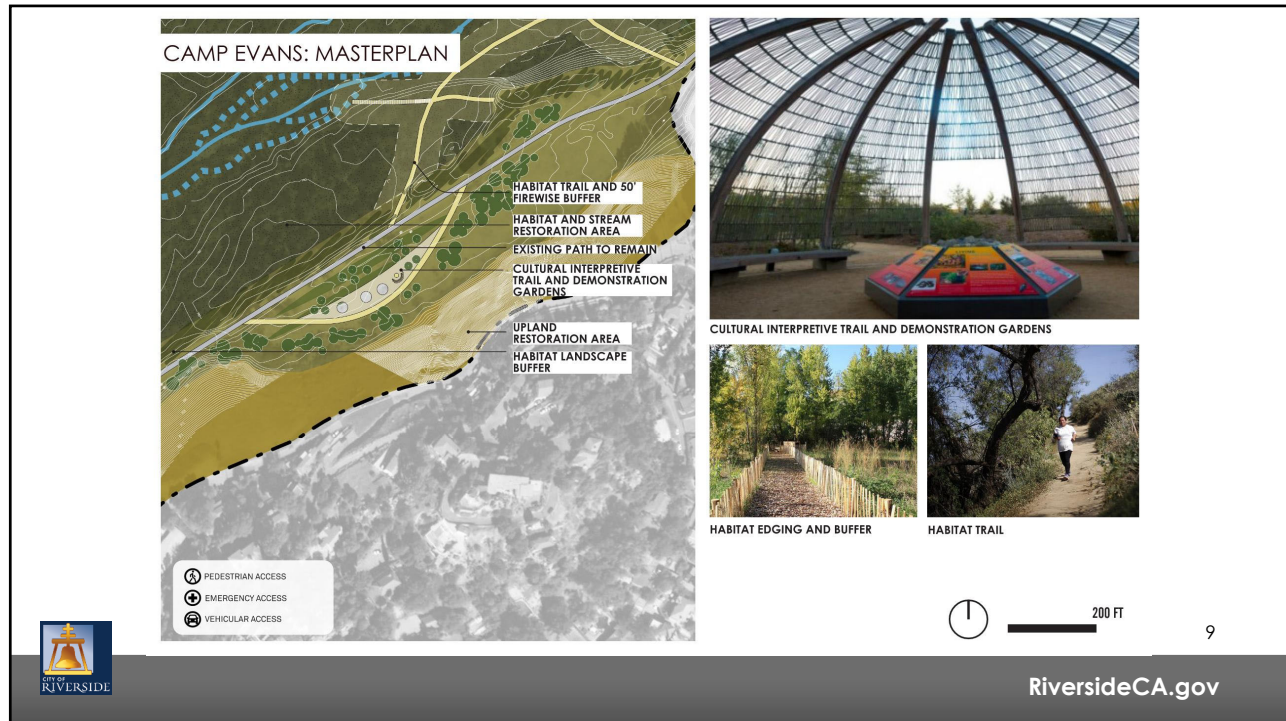
6



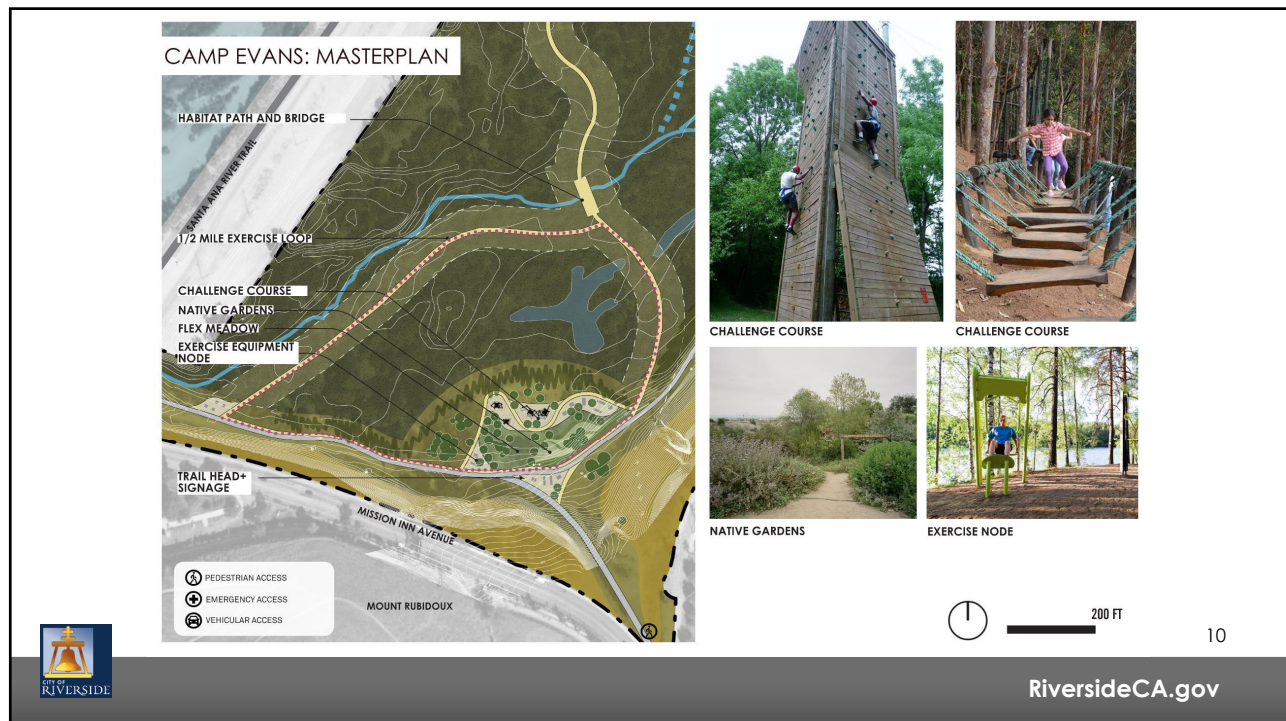
7



8



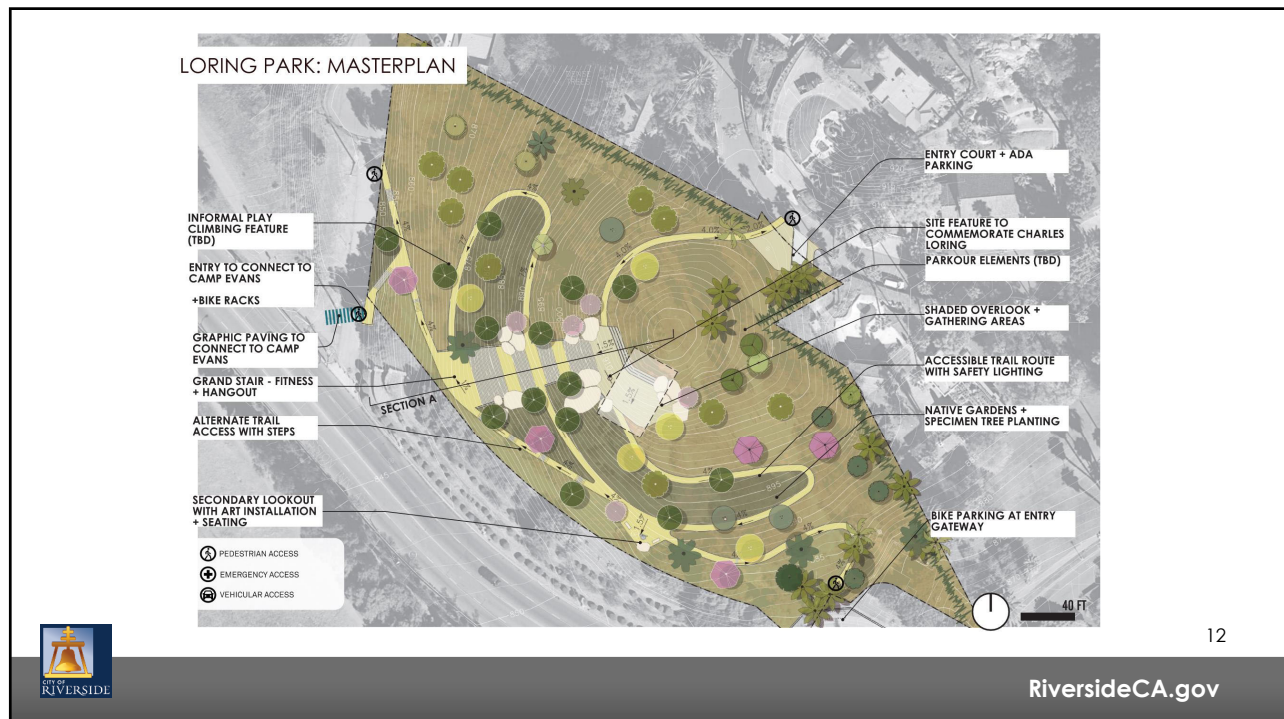
9



10

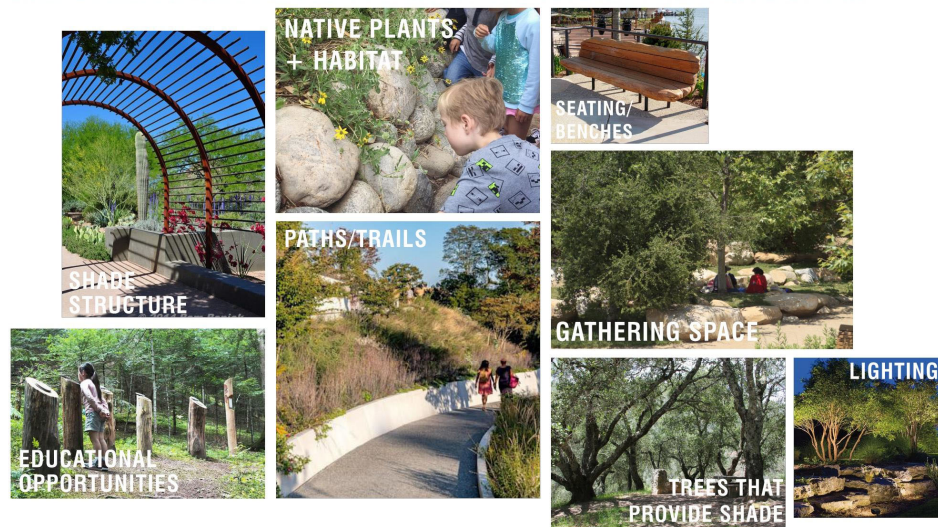


11



12

LORING PARK: A HIGH INTEREST IN **NATURE** AND **PASSIVE RECREATIONAL OPPORTUNITIES**

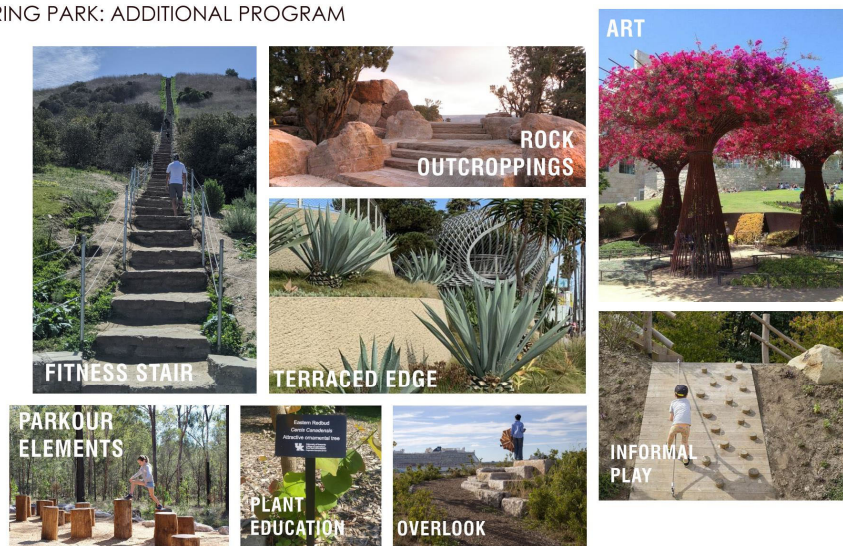


13

RiversideCA.gov

13

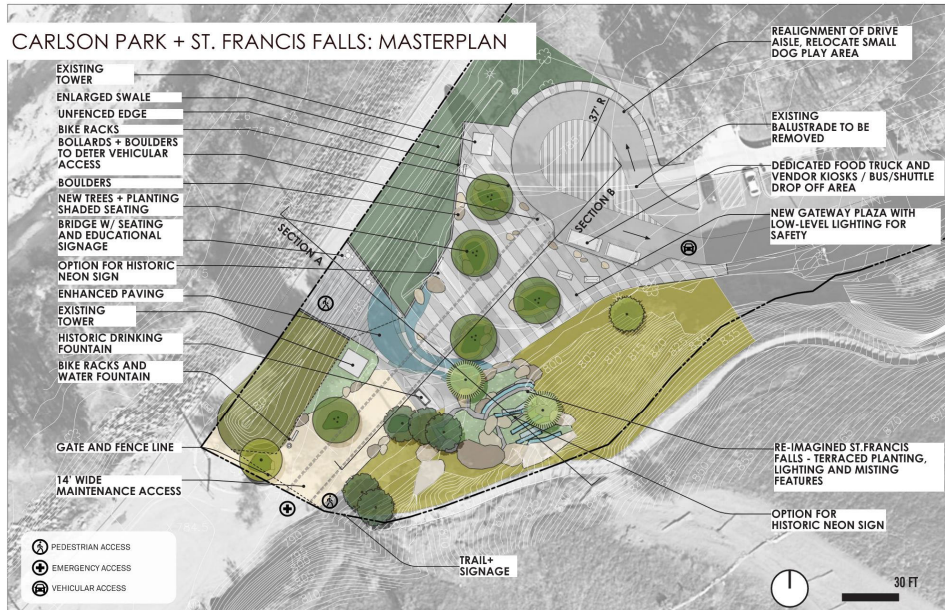
LORING PARK: ADDITIONAL PROGRAM



14

RiversideCA.gov

14



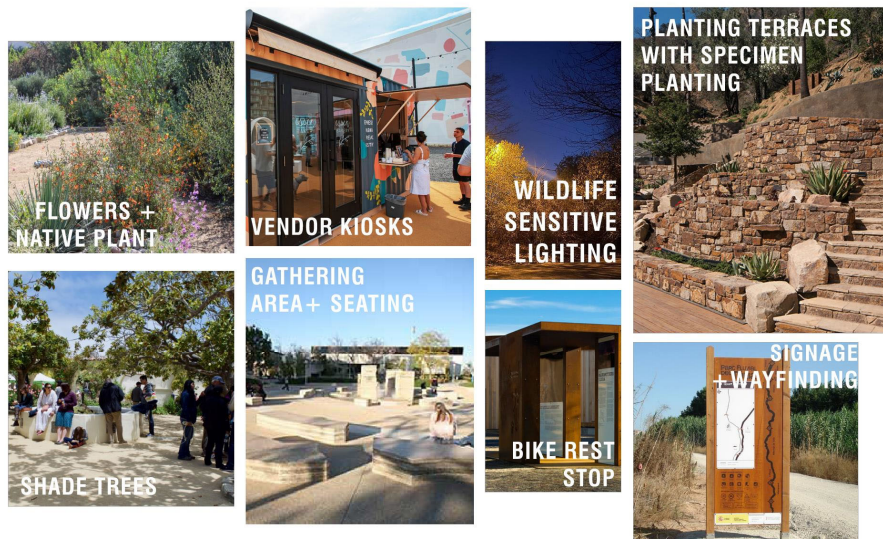
15



RiversideCA.gov

15

CARLSON PARK + ST. FRANCIS FALLS: A HIGH INTEREST IN PASSIVE + ARTFUL ELEMENTS



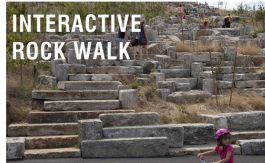
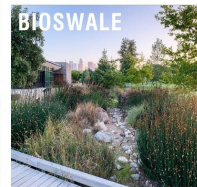
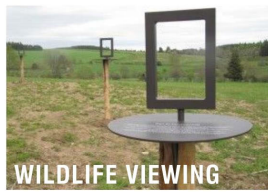
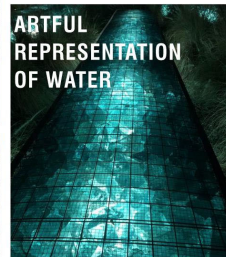
16



RiversideCA.gov

16

CARLSON PARK + ST. FRANCIS FALLS: ADDITIONAL PROGRAM

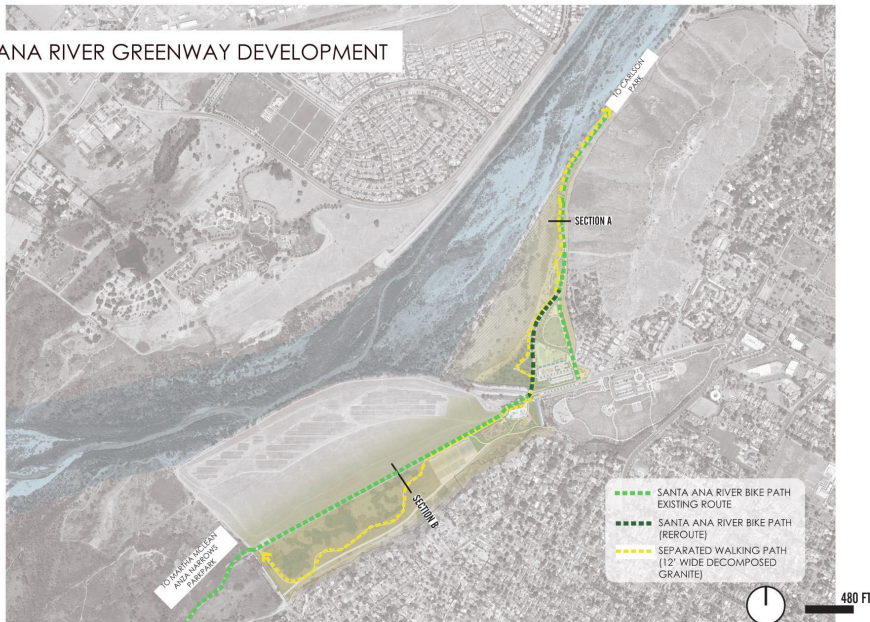


17

RiversideCA.gov

17

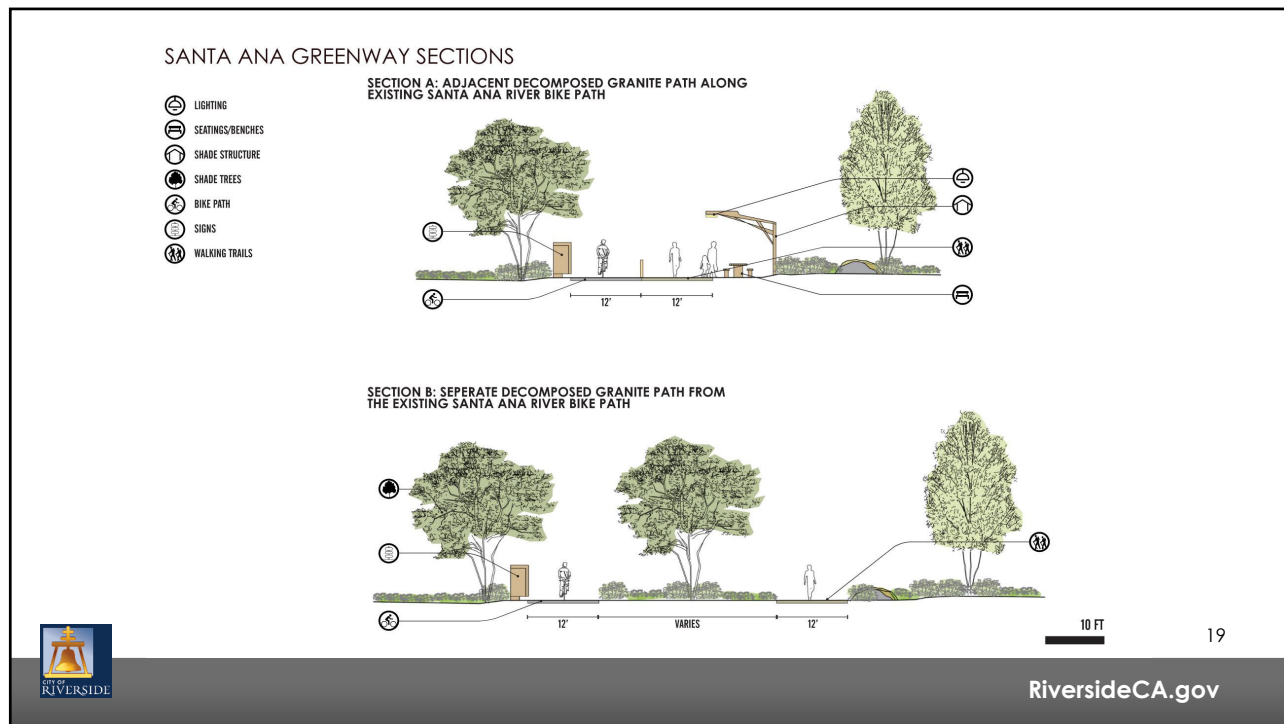
SANTA ANA RIVER GREENWAY DEVELOPMENT



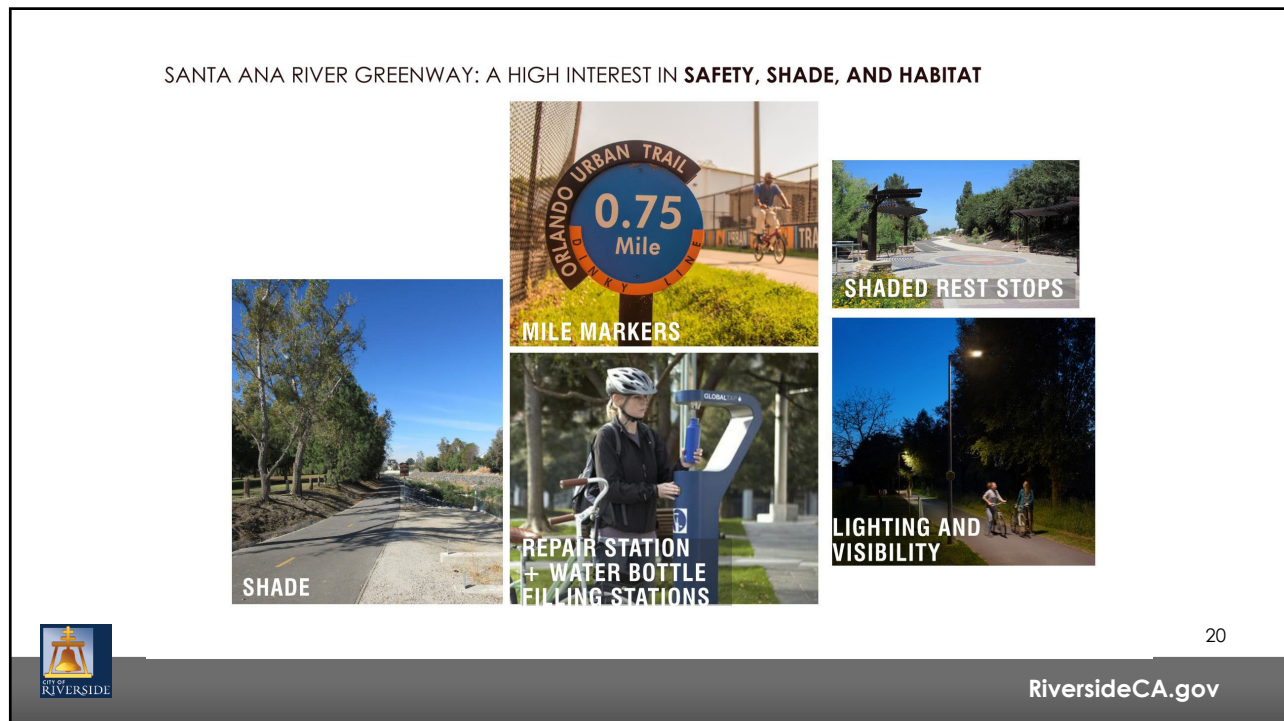
18

RiversideCA.gov

18



19



20



21



22

TEQUESQUITE NORTH EXTENSION: MASTERPLAN



BIOLOGICAL AVOIDANCE ZONE

ARROYO WALK GATHERING NODE
-informative signage and seating with shade structures

ARROYO WALK
-indigenous history of water and the Santa Ana river

SANTA ANA RIVER GREENWAY SEPARATED WALKING PATH
(12' wide decomposed granite)

SANTA ANA RIVER BIKE PATH

60 FT



ARROYO WALK GATHERING NODE



ARROYO WALK



NATIVE PLANTING

23

 **RiversideCA.gov**

23

TEQUESQUITE NORTH EXTENSION: MASTERPLAN



BIKE SPEED LIMIT ZONE

SART REROUTE

EQUESTRIAN REST STOP

FITNESS TRAIL
- .25 mile exercise loop

PLANTING BUFFER

BIKE SPEED LIMIT ZONE

NATIVE PLANTING AREA

60 FT



EQUESTRIAN REST STOP



FITNESS TRAIL



SANTA ANA GREENWAY (12' WALKING PATH)

24

 **RiversideCA.gov**

24

TEQUESQUITE NORTH EXTENSION: MASTERPLAN

OVERLOOK

SEPARATED WALKING PATH
- 12' wide decomposed granite

SART REROUTE

OVERLOOK

BIKE REST STOP

FLEX MEADOW
- half field soccer field

RESTROOMS

PICKLE BALL COURTS

WATER PLAY AREA

SHADED PICNIC AREA

COTTON WOOD TRAIL

SANTA ANA RIVER BIKE PATH

60 FT

OVERLOOK

WATER PLAY AREA

FLEX MEADOW

25

RiversideCA.gov

25

TEQUESQUITE NORTH EXTENSION: MASTERPLAN

FLEX MEADOW

CONCESSION AREA + BIKE REST STOP

PICKLE BALL COURTS

RESTROOMS AND STORAGE

ROLLER RINKS (EACH HAS 90 PEOPLE CAPACITY)

INTERPRETIVE NATIVE GARDEN

TRAILHEAD

PARKING
- 208 parking spots with permeable paving at parking rows

60 FT

CONCESSION AREA HUB

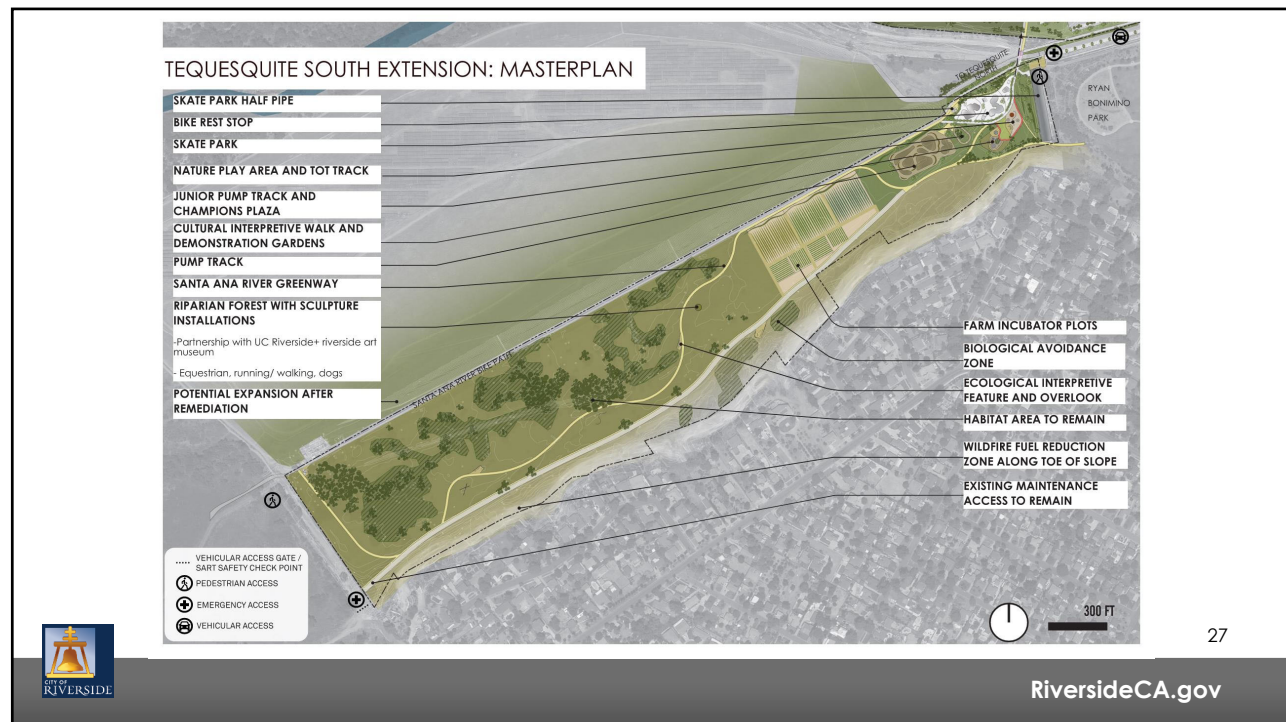
INTERPRETIVE NATIVE GARDEN

PERMEABLE PARKING

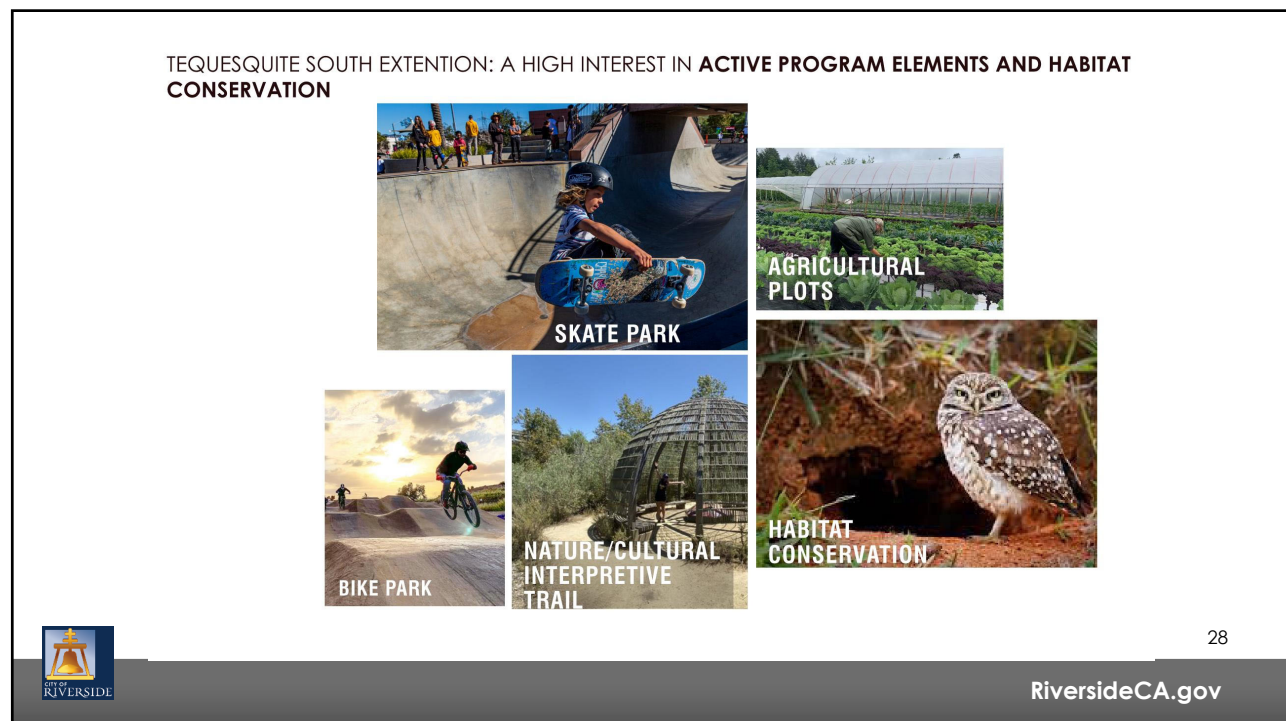
26

RiversideCA.gov

26



27



28

TEQUESQUITE SOUTH EXTENSION: MASTERPLAN

SKAT PARK HALF PIPE

SKATE PARK
s.m.l options/ areas

NATURE PLAY AREA
Hot track
gathering space

BIKE REST STOP

CULTURAL INTERPRETIVE WALK AND DEMONSTRATION GARDENS

JUNIOR PUMP TRACK AND CHAMPIONS PLAZA

PUMP TRACK

SANTA ANA RIVER BIKE PATH

75 FT

SKATE PARK

JUNIOR PUMP TRACK

CULTURAL INTERPRETIVE WALK

29

RiversideCA.gov

29

TEQUESQUITE SOUTH EXTENSION: MASTERPLAN

PUMP TRACK

SANTA ANA RIVER GREENWAY SEPARATED WALKING PATH (12' wide decomposed granite)

NATIVE PLANTING BUFFER

FARM INCUBATOR PLOTS
~1 acre and 1/4 acre plots

SANTA ANA RIVER BIKE PATH

75 FT

PUMP TRACK

FARM INCUBATOR PLOTS

NATIVE PLANTING BUFFER

30

RiversideCA.gov

30

TEQUESQUITE SOUTH EXTENSION: MASTERPLAN



SEPARATED WALKING PATH (12' WIDE DECOMPOSED GRANITE)

BIOLOGICAL AVOIDANCE ZONE

RIPARIAN FOREST WITH SCULPTURE INSTALLATIONS
Partnership with UC Riverside+ riverside art museum
Equestrian, running/ walking, dogs

ECOLOGICAL INTERPRETIVE FEATURE AND OVERLOOK

SANTA ANA RIVER BIKEPATH

75 FT



SCULPTURE WALK



ECOLOGICAL INTERPRETIVE FEATURE



WALKING PATHS AROUND HABITAT AREAS

31

RiversideCA.gov

31

TEQUESQUITE SOUTH EXTENSION: MASTERPLAN



BIKE REST STOP
Shaded seating, water fountain, and repair station

SANTA ANA RIVER GREENWAY
Separated walking path (12' wide decomposed granite)

BIOLOGICAL AVOIDANCE ZONE

EXISTING VEGETATION TO REMAIN

EXISTING ACCESS ROAD TO REMAIN

SANTA ANA RIVER BIKEPATH

75 FT



BIKE REST STOP



SANTA ANA RIVER GREENWAY



EXISTING VEGETATION

32

RiversideCA.gov

32

MARTHA MCLEAN ANZA NARROWS PARK: MASTERPLAN



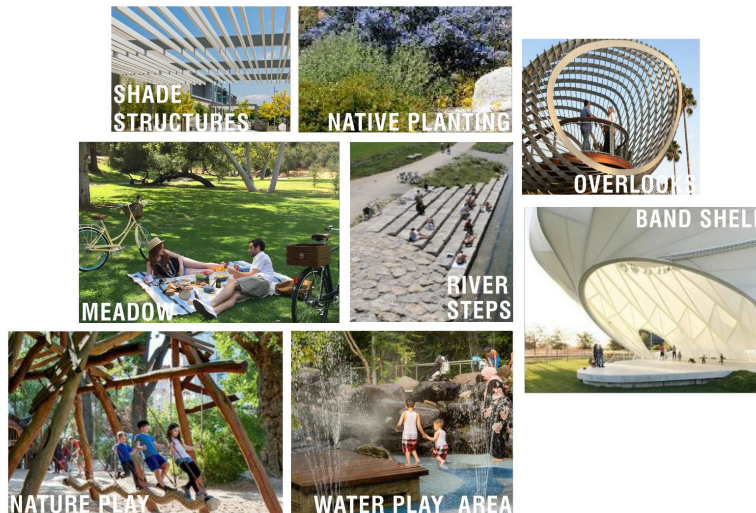
33



RiversideCA.gov

33

MARTHA MCLEAN ANZA NARROWS PARK: A HIGH INTEREST IN EDUCATION, RIVER RELATED ELEMENTS AND VIEWS



34



RiversideCA.gov

34



35



36

MARTHA MCLEAN: MASTERPLAN

SEPARATED WALKING PATH

BAND SHELL AND COMMUNITY MEADOW
NATIVE POLLINATOR PLANTING

VEHICULAR BARRIER ALONG PEDESTRIAN WALK

BIKE REST STOP
-Bike parking, bottle filling station, signage, shaded seating, bike repair station, exercise equipment

SANTA ANA RIVER TRAIL

50 FT

BAND SHELL

COMMUNITY MEADOW

BIKE REST STOP FILLING STATION

37

RiversideCA.gov

37

MARTHA MCLEAN: MASTERPLAN

VEHICULAR ACCESS GATE /SART SAFETY CHECK POINT

VEHICULAR BARRIER ALONG PEDESTRIAN WALK

SANTA ANA RIVER TRAIL

50 FT

STORMWATER RAIN GARDEN

NATIVE PLANTING BUFFER ALONG ROAD

RIVER SWINGS AND OVERLOOK

TRAILHEAD + RESTROOM

VEHICULAR ACCESS GATE /SART SAFETY CHECK POINT

PROPOSED PARKING AREA WITH CONTROLLED VEHICULAR ENTRANCE TO BIKE PATH (27 NEW SPOTS)

RIVER SWINGS

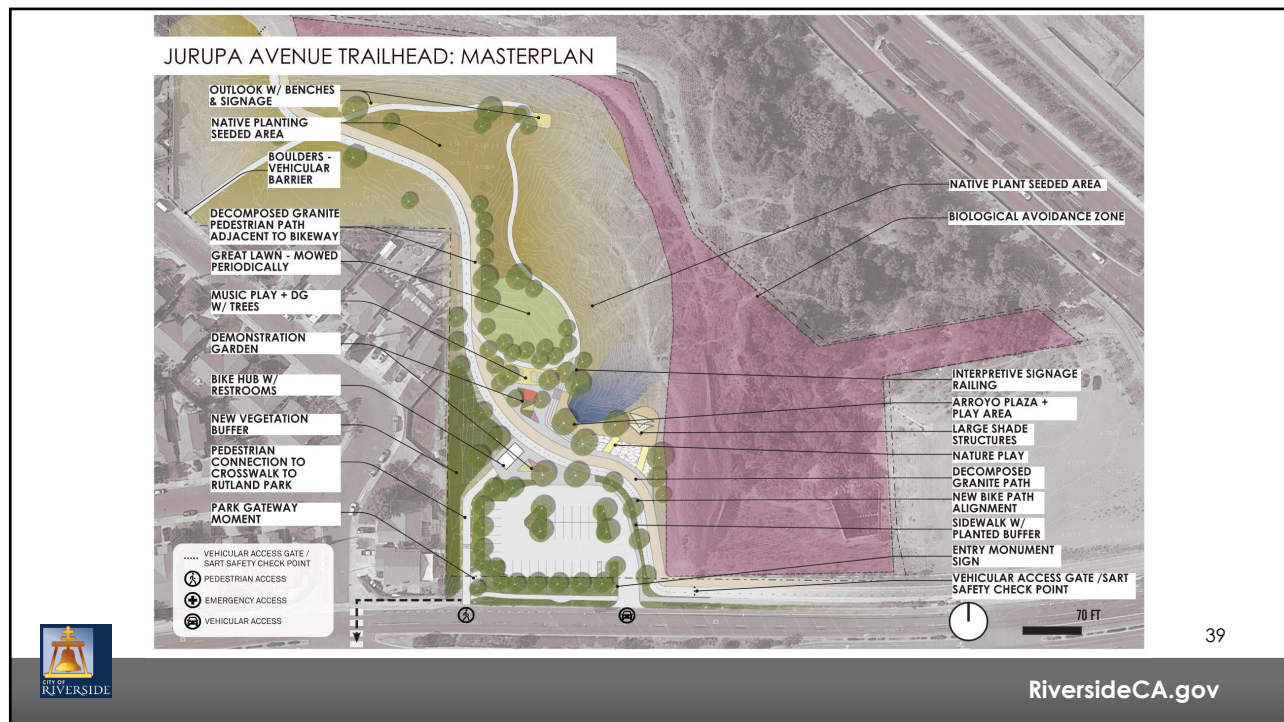
SHADED PARKING

STORMWATER MANAGEMENT RAIN GARDEN

38

RiversideCA.gov

38



39



40

STRATEGIC PLAN ALIGNMENT

Strategic Priority 1 – Arts, Culture and Recreation:

- Goal 1.3: improve parks, recreational amenities, open space, and trail development, and fulfill critical lifecycle and facility maintenance needs
- Goal 1.4: to prioritize safety at parks, trails, arts, cultural and recreational facilities

Strategic Priority 2 – Community Wellbeing:

- Goal 2.3: strengthen neighborhood identities and improve community health and the physical environment through amenities and programs that foster an increased sense of community and enhanced feelings of pride and belonging citywide

Strategic Priority 4 – Environmental Stewardship:

- Goal 4.5: Maintain and conserve 30% of Riverside's natural lands in green space including, but not limited to, agricultural lands and urban forests in order to protect and restore Riverside's rich biodiversity and accelerate the natural removal of carbon, furthering our community's climate resilience, and

Strategic Priority 5 – High Performing Government:

- Goal 5.3: enhance communication and collaboration with community members to improve transparency, build public trust, and encourage shared decision-making.

Cross-Cutting Threads



Community Trust



Fiscal Responsibility



Sustainability &
Resiliency



Equity



Innovation



41

RiversideCA.gov

41

RECOMMENDATIONS

That the City Council:

1. Authorize fund transfer of \$50,000 from the Regional Park Special Capital Improvement (413) Fund account 0000413-340345 and transfer funds in the same amount to the Santa Ana River Coastal Conservancy account 9339910-440305;
2. Authorize 20% change order authority of \$392,736.36 not to exceed total compensation amount of Two Million Three Hundred Fifty-Six Thousand Four Hundred Eighteen Dollars (\$2,356,418) for Professional Consultant Services Agreement with MLA Green, Inc. dba Studio-MLA of Los Angeles, California, for the River-side Gateway Parks Project Suite – Planning & Design for Park Master Plan and California Environmental Quality Act Services for Park, Trail, and Greenway Improvements;



42

RiversideCA.gov

42

RECOMMENDATIONS

3. Approve agreement amendment to increase compensation to not to exceed Two Million Three Hundred Fifty-Six Thousand Four Hundred Eighteen Dollars (\$2,356,418) and extend contract term to June 30, 2024; and
4. Authorize the City Manager, or designee, to execute the Professional Consultant Services Agreement Amendment with MLA Green, Inc. dba Studio-MLA including making minor and non-substantive changes.



43

RiversideCA.gov